

Data Path : Z:\voasrv\HPCHEM1\MSVOA\_U\Data\VU042821\  
 Data File : VU043366.D  
 Acq On : 28 Apr 2021 00:27  
 Operator : SY/MD  
 Sample : M2133-10  
 Misc : 5.0mL/MSVOA\_U/WATER  
 ALS Vial : 13 Sample Multiplier: 1

Instrument :  
 MSVOA\_U  
 ClientSampleId :  
 SA-PZ124-20210420

Integration Parameters: RTEINT.P

Integrator: RTE  
 Smoothing : ON Filtering: 5  
 Sampling : 1 Min Area: 3 % of largest Peak  
 Start Thrs: 0.2 Max Peaks: 100  
 Stop Thrs : 0 Peak Location: TOP

If leading or trailing edge < 100 prefer < Baseline drop else tangent >  
 Peak separation: 5

Method : Z:\voasrv\HPCHEM1\MSVOA\_U\Method\82U041221W.M  
 Title : SW846 8260

Signal : TIC: VU043366.D\data.ms

peak #	R.T. min	first scan	max scan	last scan	PK TY	peak height	corr. area	corr. % max.	% of total
1	2.781	435	448	471	rBV3	3728	10712	1.75%	0.323%
2	3.880	776	790	807	rVB2	15579	36382	5.94%	1.096%
3	5.298	1216	1231	1244	rBV	105079	219151	35.80%	6.603%
4	5.382	1244	1257	1274	rVB	156031	313952	51.29%	9.459%
5	5.710	1344	1359	1375	rBV	118924	241900	39.52%	7.288%
6	6.256	1515	1529	1548	rBV	234317	438018	71.55%	13.197%
7	7.906	2027	2042	2061	rBV	361965	612157	100.00%	18.444%
8	9.423	2501	2514	2541	rBV	330382	538757	88.01%	16.232%
9	10.639	2880	2892	2913	rBV	257450	407344	66.54%	12.273%
10	11.819	3246	3259	3279	rBV	320134	500653	81.79%	15.084%

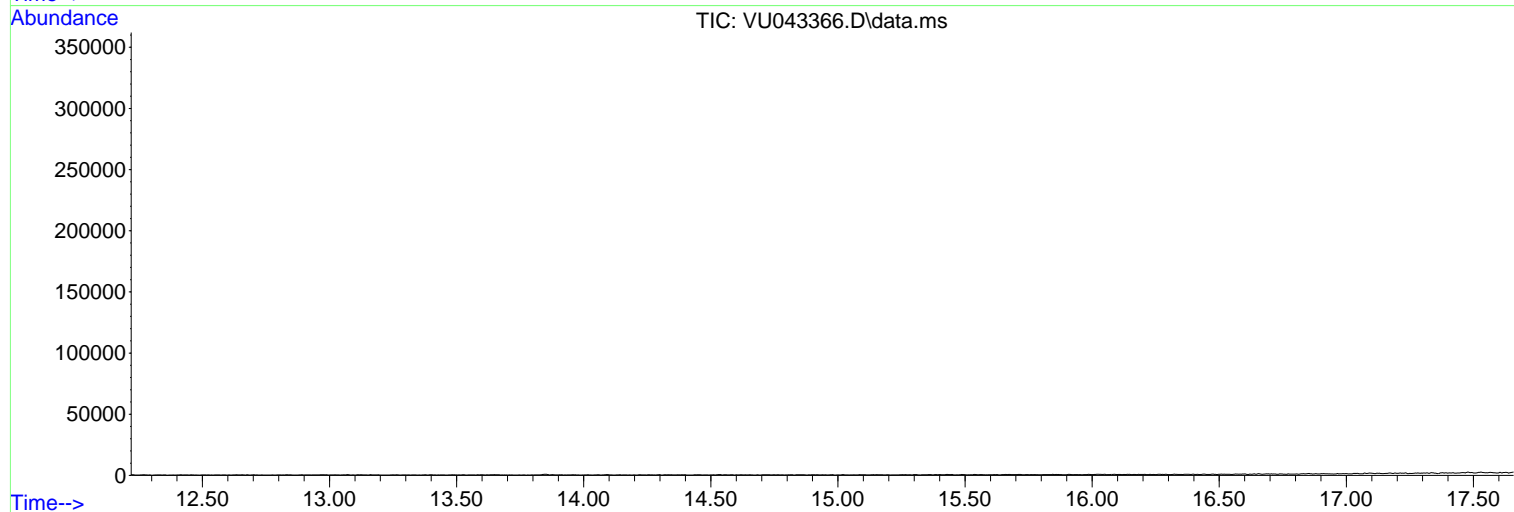
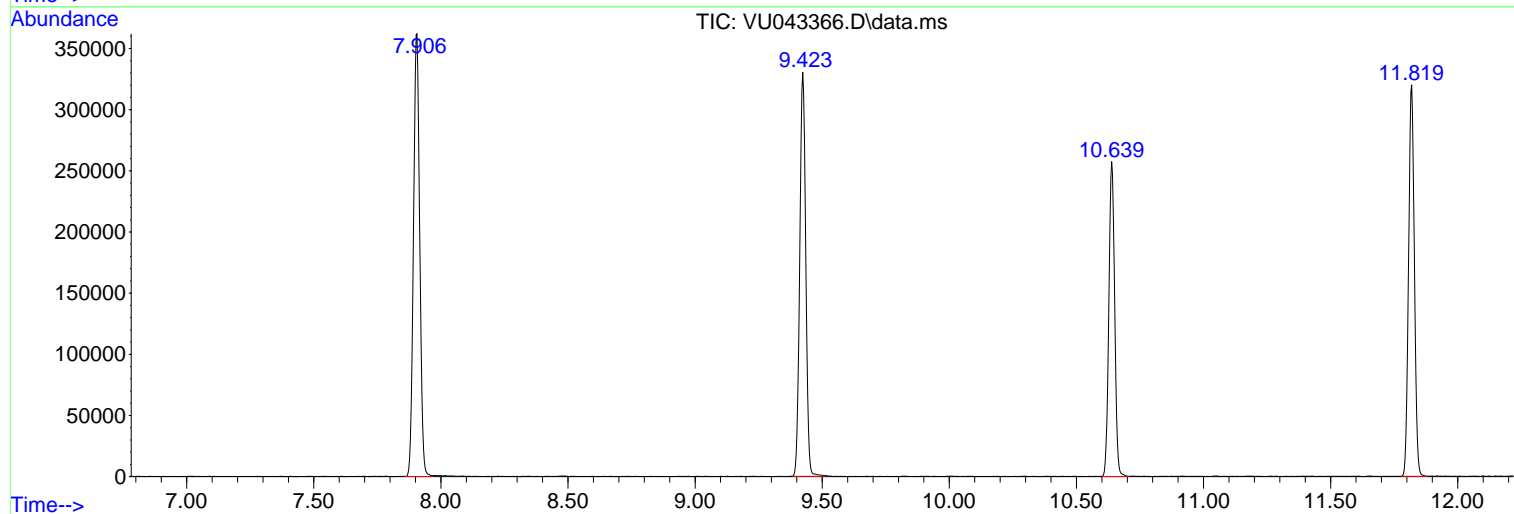
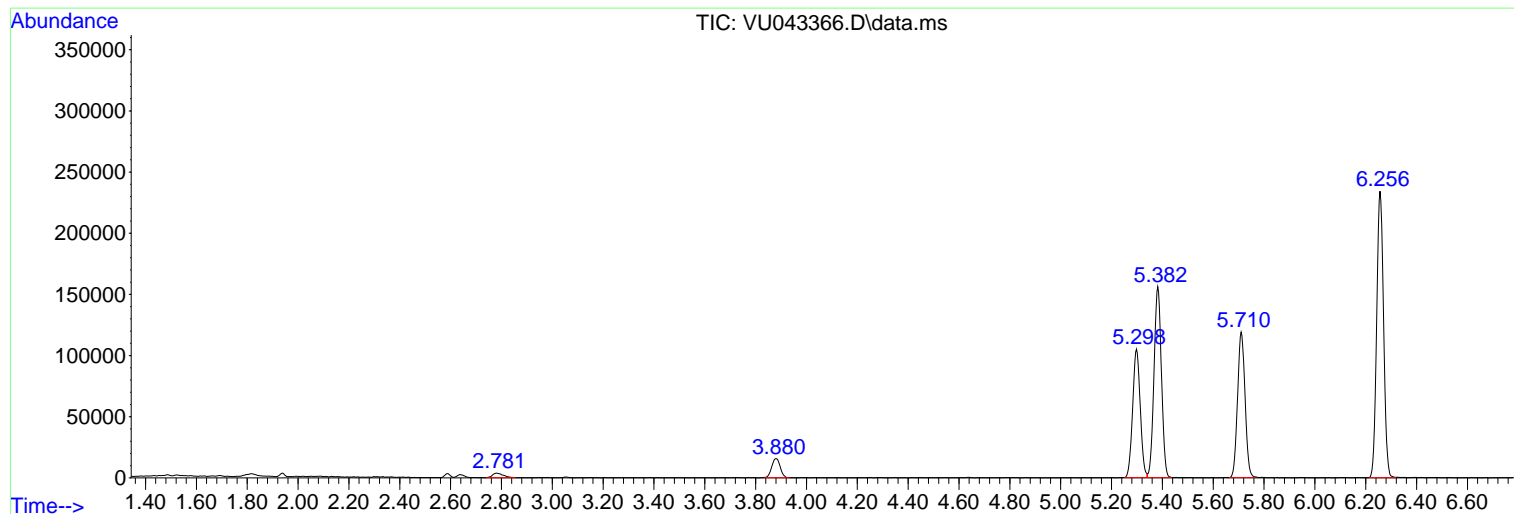
Sum of corrected areas: 3319026

Data Path : Z:\voasrv\HPCHEM1\MSVOA\_U\Data\VU042821\  
Data File : VU043366.D  
Acq On : 28 Apr 2021 00:27  
Operator : SY/MD  
Sample : M2133-10  
Misc : 5.0mL/MSVOA\_U/WATER  
ALS Vial : 13 Sample Multiplier: 1

Instrument :  
MSVOA\_U  
ClientSampleId :  
SA-PZ124-20210420

Quant Method : Z:\voasrv\HPCHEM1\MSVOA\_U\Method\82U041221W.M  
Quant Title : SW846 8260

TIC Library : C:\DATABASE\NIST11.L  
TIC Integration Parameters: LSCINT.P



Library Search Compound Report

Data Path : Z:\voasrv\HPCHEM1\MSVOA\_U\Data\VU042821\  
Data File : VU043366.D  
Acq On : 28 Apr 2021 00:27  
Operator : SY/MD  
Sample : M2133-10  
Misc : 5.0mL/MSVOA\_U/WATER  
ALS Vial : 13 Sample Multiplier: 1

Instrument :  
MSVOA\_U  
ClientSampleId :  
SA-PZ124-20210420

Quant Method : Z:\voasrv\HPCHEM1\MSVOA\_U\Method\82U041221W.M  
Quant Title : SW846 8260

TIC Library : C:\DATABASE\NIST11.L  
TIC Integration Parameters: LSCINT.P

No Library Search Compounds Detected

\*\*\*\*\*

Data Path : Z:\voasrv\HPCHEM1\MSVOA\_U\Data\VU042821\  
Data File : VU043366.D  
Acq On : 28 Apr 2021 00:27  
Operator : SY/MD  
Sample : M2133-10  
Misc : 5.0mL/MSVOA\_U/WATER  
ALS Vial : 13 Sample Multiplier: 1

Instrument :  
MSVOA\_U  
ClientSampleId :  
SA-PZ124-20210420

Quant Method : Z:\voasrv\HPCHEM1\MSVOA\_U\Method\82U041221W.M  
Quant Title : SW846 8260

TIC Library : C:\DATABASE\NIST11.L  
TIC Integration Parameters: LSCINT.P

TIC Top Hit name	RT	EstConc	Units	Response	--Internal Standard--			
					#	RT	Resp	Conc

---