

Data Path : Z:\voasrv\HPCHEM1\MSVOA\_U\Data\VU042821\  
 Data File : VU043379.D  
 Acq On : 28 Apr 2021 12:36  
 Operator : SY/MD  
 Sample : M2173-02  
 Misc : 5.0mL/MSVOA\_U/WATER  
 ALS Vial : 29 Sample Multiplier: 1

Instrument :  
 MSVOA\_U  
 ClientSampleId :  
 STORAGE-BLANK-WATER-REF-5

Integration Parameters: RTEINT.P  
 Integrator: RTE  
 Smoothing : ON Filtering: 5  
 Sampling : 1 Min Area: 3 % of largest Peak  
 Start Thrs: 0.2 Max Peaks: 100  
 Stop Thrs : 0 Peak Location: TOP

If leading or trailing edge < 100 prefer < Baseline drop else tangent >  
 Peak separation: 5

Method : Z:\voasrv\HPCHEM1\MSVOA\_U\Method\82U041221W.M  
 Title : SW846 8260

Signal : TIC: VU043379.D\data.ms

peak #	R.T. min	first scan	max scan	last scan	PK TY	peak height	corr. area	corr. % max.	% of total
1	5.298	1215	1231	1244	rBV	119777	253936	35.39%	6.810%
2	5.382	1244	1257	1275	rVB	170646	348980	48.64%	9.359%
3	5.710	1344	1359	1384	rBV	137557	283352	39.49%	7.599%
4	6.256	1514	1529	1552	rBV	259830	486334	67.78%	13.043%
5	7.906	2028	2042	2067	rBV	417632	717543	100.00%	19.244%
6	9.423	2501	2514	2533	rBV	369872	597793	83.31%	16.032%
7	10.639	2879	2892	2915	rBV	299546	478859	66.74%	12.843%
8	11.819	3244	3259	3278	rBV	361833	561846	78.30%	15.068%

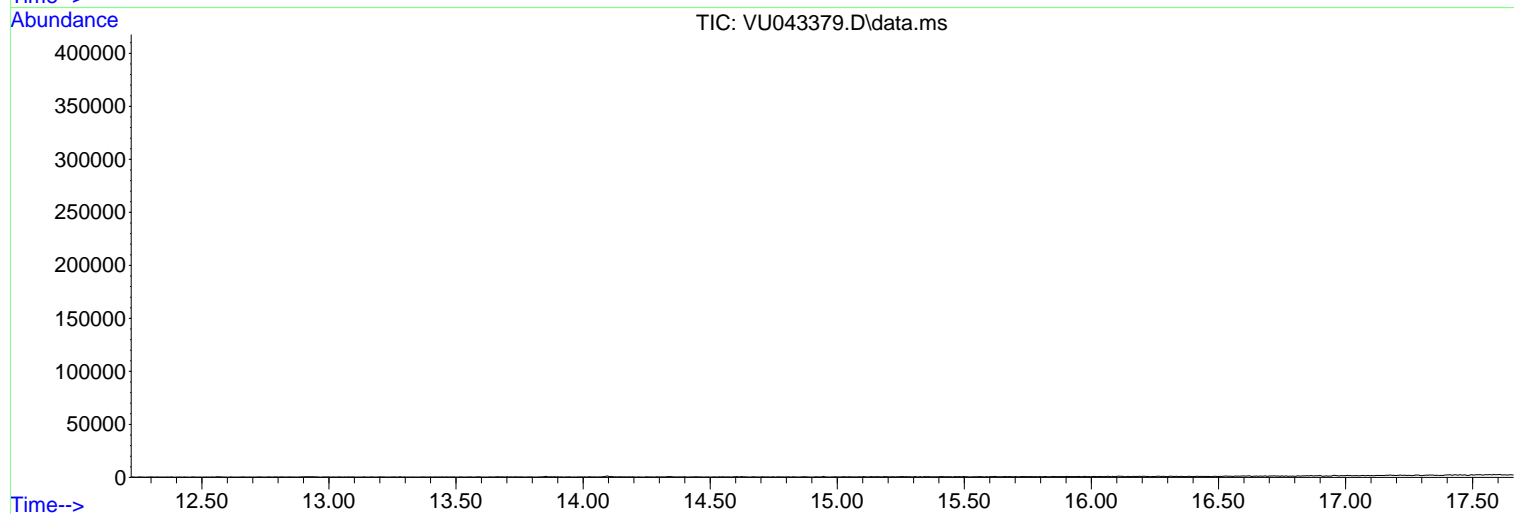
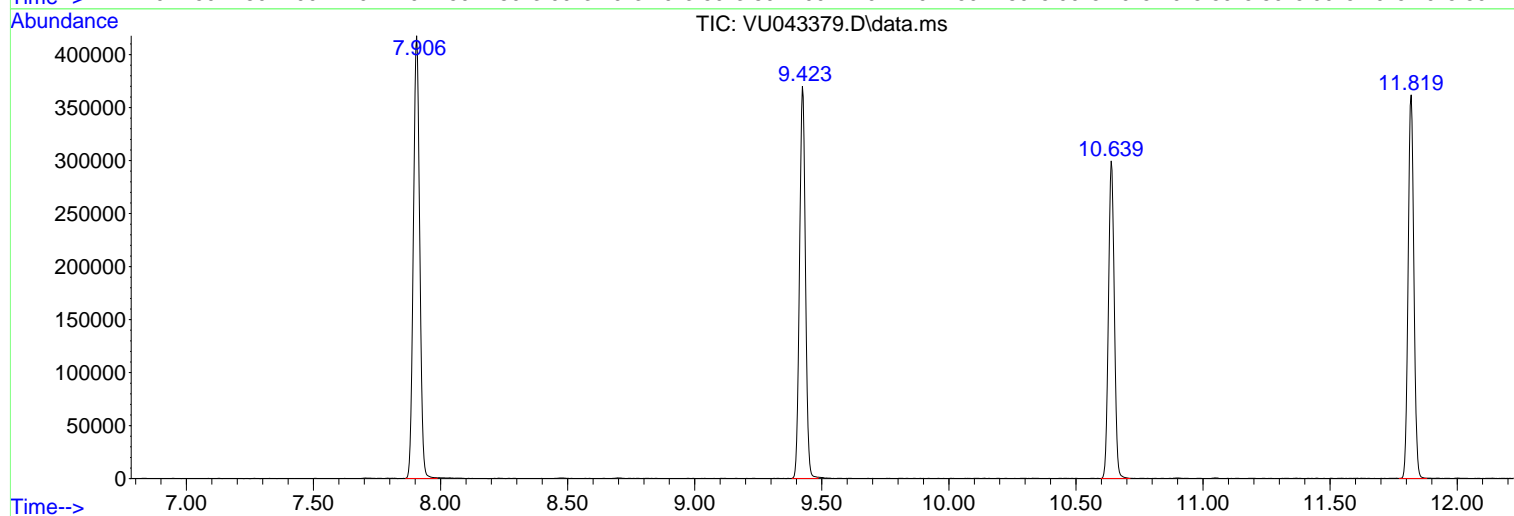
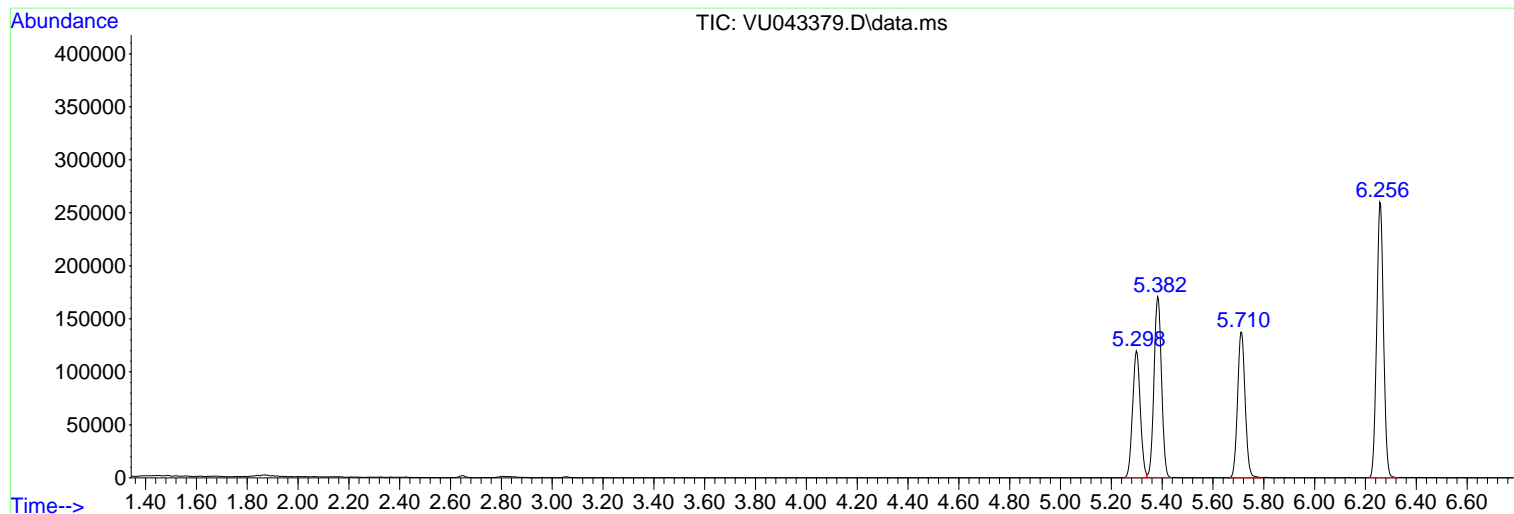
Sum of corrected areas: 3728643

Data Path : Z:\voasrv\HPCHEM1\MSVOA\_U\Data\VU042821\  
Data File : VU043379.D  
Acq On : 28 Apr 2021 12:36  
Operator : SY/MD  
Sample : M2173-02  
Misc : 5.0mL/MSVOA\_U/WATER  
ALS Vial : 29 Sample Multiplier: 1

Instrument :  
MSVOA\_U  
ClientSampleId :  
STORAGE-BLANK-WATER-REF-5

Quant Method : Z:\voasrv\HPCHEM1\MSVOA\_U\Method\82U041221W.M  
Quant Title : SW846 8260

TIC Library : C:\DATABASE\NIST11.L  
TIC Integration Parameters: LSCINT.P



Library Search Compound Report

Data Path : Z:\voasrv\HPCHEM1\MSVOA\_U\Data\VU042821\  
Data File : VU043379.D  
Acq On : 28 Apr 2021 12:36  
Operator : SY/MD  
Sample : M2173-02  
Misc : 5.0mL/MSVOA\_U/WATER  
ALS Vial : 29 Sample Multiplier: 1

**Instrument :**  
MSVOA\_U  
**ClientSampleId :**  
STORAGE-BLANK-WATER-REF-5

Quant Method : Z:\voasrv\HPCHEM1\MSVOA\_U\Method\82U041221W.M  
Quant Title : SW846 8260

TIC Library : C:\DATABASE\NIST11.L  
TIC Integration Parameters: LSCINT.P

No Library Search Compounds Detected

\*\*\*\*\*

Data Path : Z:\voasrv\HPCHEM1\MSVOA\_U\Data\VU042821\  
Data File : VU043379.D  
Acq On : 28 Apr 2021 12:36  
Operator : SY/MD  
Sample : M2173-02  
Misc : 5.0mL/MSVOA\_U/WATER  
ALS Vial : 29 Sample Multiplier: 1

**Instrument :**  
MSVOA\_U  
**ClientSampleId :**  
STORAGE-BLANK-WATER-REF-5

Quant Method : Z:\voasrv\HPCHEM1\MSVOA\_U\Method\82U041221W.M  
Quant Title : SW846 8260

TIC Library : C:\DATABASE\NIST11.L  
TIC Integration Parameters: LSCINT.P

TIC Top Hit name	RT	EstConc	Units	Response	--Internal Standard--			
					#	RT	Resp	Conc

---