

Data Path : Z:\voasrv\HPCHEM1\MSVOA_U\Data\VU042922\
 Data File : VU048353.D
 Acq On : 29 Apr 2022 12:50
 Operator : SY/MD
 Sample : N2562-15ME
 Misc : 7.50g/5.0mL/100uL/5.0mL/MSVOA_U/MEOH
 ALS Vial : 8 Sample Multiplier: 1

Instrument :
 MSVOA_U
 ClientSampleId :
 EW476ME

Quant Time: Apr 30 04:40:10 2022
 Quant Method : Z:\voasrv\HPCHEM1\MSVOA_U\Method\SFAMULM042522WMA.M
 Quant Title : VOC Analysis
 QLast Update : Sat Apr 30 04:38:24 2022
 Response via : Initial Calibration

Compound	R.T.	QIon	Response	Conc	Units	Dev(Min)

Internal Standards						
1) 1,4-Difluorobenzene	6.247	114	393401	50.000	ug/L	0.00
28) Chlorobenzene-d5	9.423	117	400822	50.000	ug/L	0.00
58) 1,4-Dichlorobenzene-d4	11.819	152	203677	50.000	ug/L	0.00
System Monitoring Compounds						
4) Vinyl Chloride-d3	1.597	65	143253	39.599	ug/L	0.00
Spiked Amount	50.000	Range 60 - 135	Recovery	=	79.200%	
7) Chloroethane-d5	1.874	69	25690	10.117	ug/L	-0.03
Spiked Amount	50.000	Range 70 - 130	Recovery	=	20.240%#	
11) 1,1-Dichloroethene-d2	2.530	63	205458	35.446	ug/L	-0.04
Spiked Amount	50.000	Range 60 - 125	Recovery	=	70.900%	
21) 2-Butanone-d5	4.639	46	325121	105.371	ug/L	0.00
Spiked Amount	100.000	Range 40 - 130	Recovery	=	105.370%	
24) Chloroform-d	5.063	84	323424	49.289	ug/L	0.00
Spiked Amount	50.000	Range 70 - 125	Recovery	=	98.580%	
26) 1,2-Dichloroethane-d4	5.703	65	213004	54.711	ug/L	0.00
Spiked Amount	50.000	Range 70 - 125	Recovery	=	109.420%	
32) Benzene-d6	5.719	84	681210	53.887	ug/L	0.00
Spiked Amount	50.000	Range 70 - 125	Recovery	=	107.780%	
36) 1,2-Dichloropropane-d6	6.690	67	225131	53.868	ug/L	0.00
Spiked Amount	50.000	Range 70 - 120	Recovery	=	107.740%	
41) Toluene-d8	7.896	98	623309	54.396	ug/L	0.00
Spiked Amount	50.000	Range 80 - 120	Recovery	=	108.800%	
43) trans-1,3-Dichloroprop...	8.182	79	99481	53.945	ug/L	0.00
Spiked Amount	50.000	Range 60 - 125	Recovery	=	107.880%	
47) 2-Hexanone-d5	8.661	63	253802	112.560	ug/L	0.02
Spiked Amount	100.000	Range 45 - 130	Recovery	=	112.560%	
56) 1,1,2,2-Tetrachloroeth...	10.767	84	373816	51.000	ug/L	0.00
Spiked Amount	50.000	Range 65 - 120	Recovery	=	102.000%	
66) 1,2-Dichlorobenzene-d4	12.198	152	260568	56.870	ug/L	0.00
Spiked Amount	50.000	Range 80 - 120	Recovery	=	113.740%	

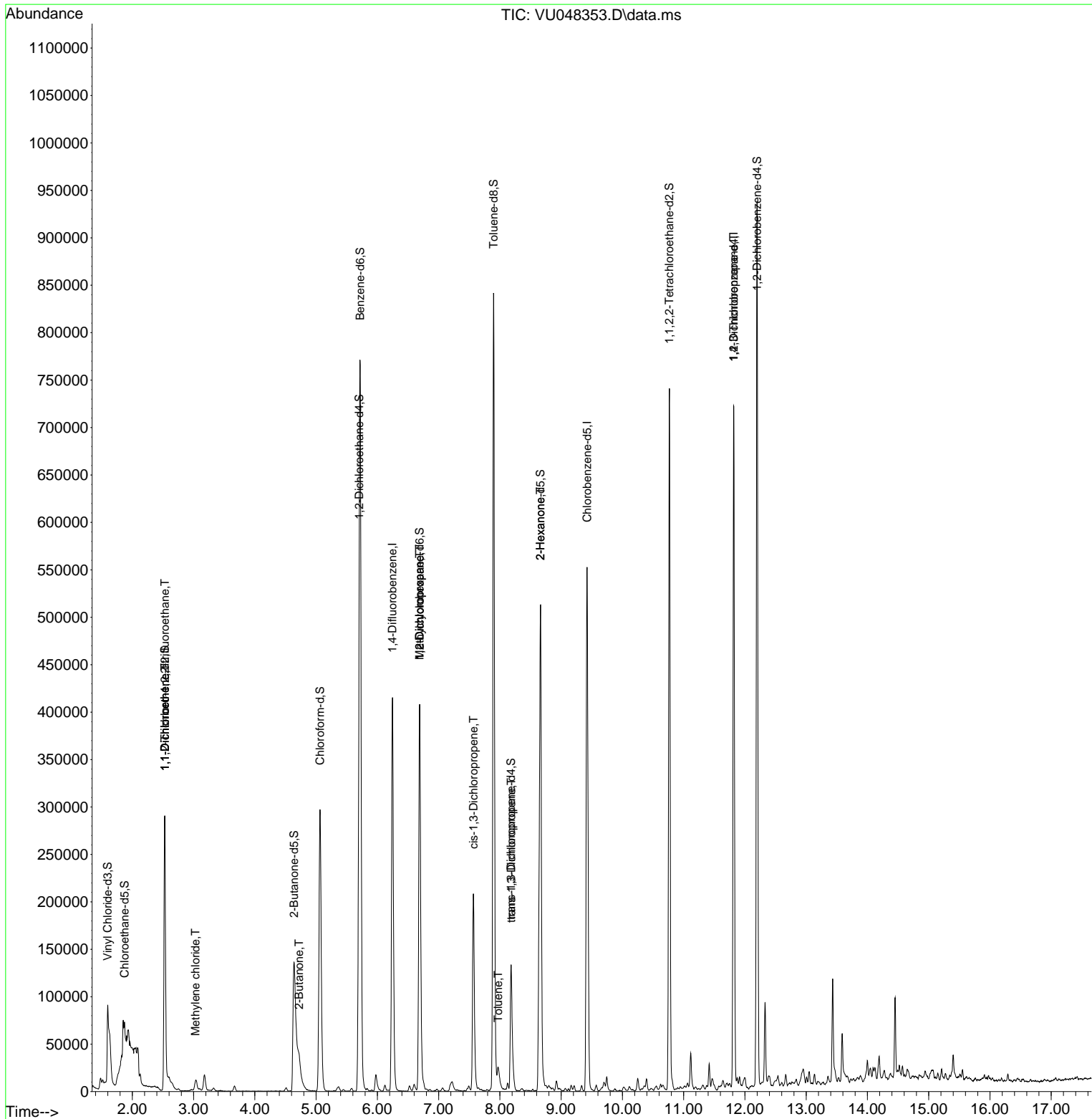
Target Compounds						Qvalue
10) 1,1,2-Trichloro-1,2,2-...	2.530	101	1748	0.590	ug/L #	18
12) 1,1-Dichloroethene	2.530	96	1778	0.687	ug/L #	1
16) Methylene chloride	3.031	84	5603	1.680	ug/L	91
22) 2-Butanone	4.723	43	39920	13.629	ug/L	98
35) Methylcyclohexane	6.690	83	52300	12.807	ug/L #	20
37) 1,2-Dichloropropane	6.690	63	23136	6.852	ug/L #	88
39) cis-1,3-Dichloropropene	7.568	75	5586	1.177	ug/L #	65
42) Toluene	7.970	91	17480	1.403	ug/L	100
44) trans-1,3-Dichloropropene	8.185	75	3824	0.824	ug/L #	77
48) 2-Hexanone	8.661	43	30451	7.161	ug/L #	65
60) 1,2,3-Trichloropropane	11.816	75	20759	4.369	ug/L #	67

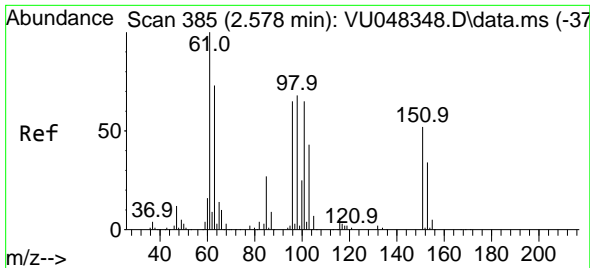
(#) = qualifier out of range (m) = manual integration (+) = signals summed

Data Path : Z:\voasrv\HPCHEM1\MSVOA_U\Data\VU042922\
 Data File : VU048353.D
 Acq On : 29 Apr 2022 12:50
 Operator : SY/MD
 Sample : N2562-15ME
 Misc : 7.50g/5.0mL/100uL/5.0mL/MSVOA_U/MEOH
 ALS Vial : 8 Sample Multiplier: 1

Instrument :
 MSVOA_U
 ClientSampleId :
 EW476ME

Quant Time: Apr 30 04:40:10 2022
 Quant Method : Z:\voasrv\HPCHEM1\MSVOA_U\Method\SFAMULM042522WMA.M
 Quant Title : VOC Analysis
 QLast Update : Sat Apr 30 04:38:24 2022
 Response via : Initial Calibration

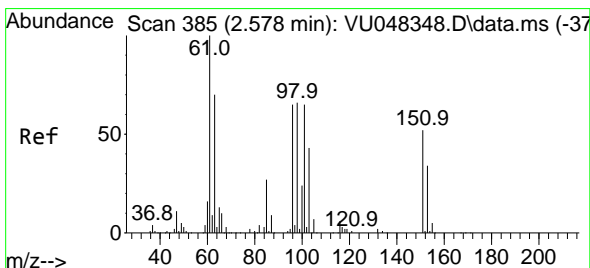
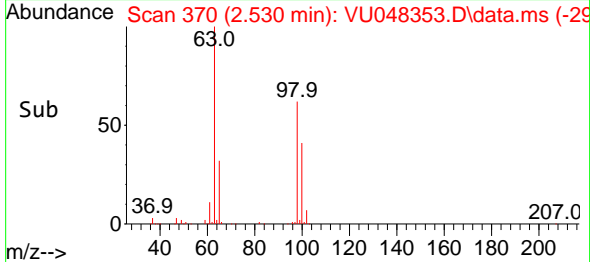
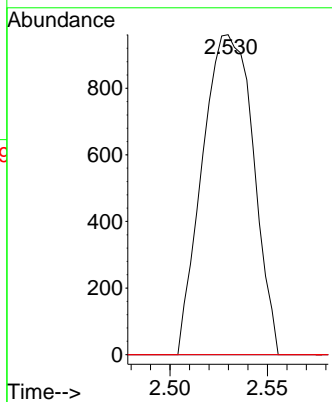
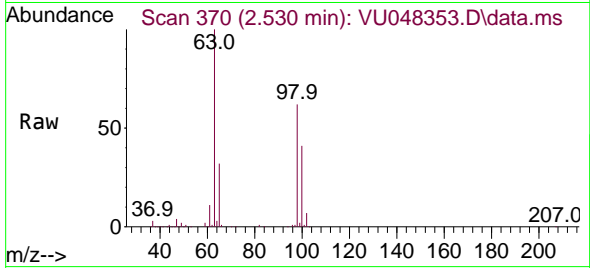




#10
 1,1,2-Trichloro-1,2,2-trifluoroethane
 Concen: 0.590 ug/L
 RT: 2.530 min Scan# 31
 Delta R.T. -0.048 min
 Lab File: VU048353.D
 Acq: 29 Apr 2022 12:50

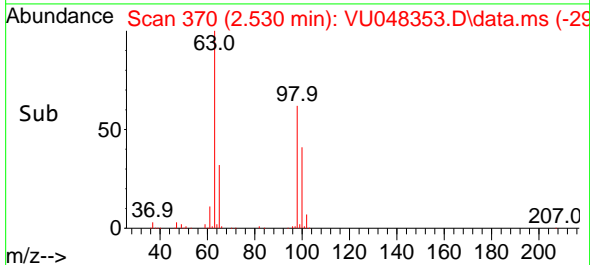
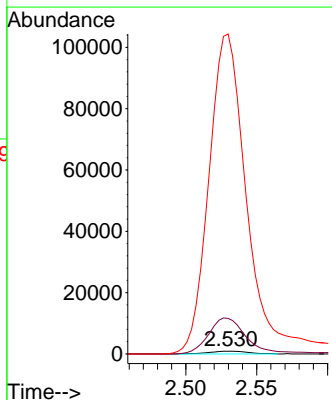
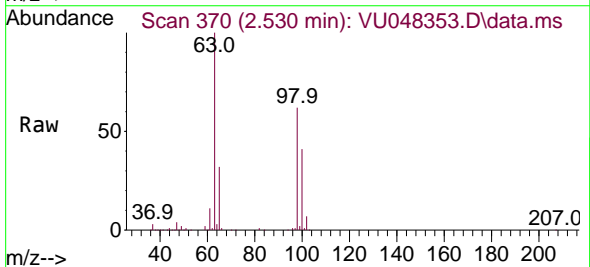
Instrument :
 MSVOA_U
 ClientSampleId :
 EW476ME

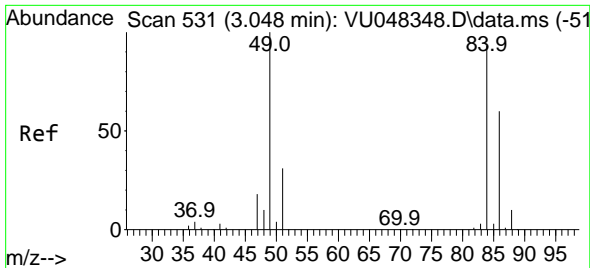
Tgt Ion:101 Resp: 1748
 Ion Ratio Lower Upper
 101 100
 85 0.0 32.6 48.8#
 151 0.0 64.1 96.1#



#12
 1,1-Dichloroethene
 Concen: 0.687 ug/L
 RT: 2.530 min Scan# 370
 Delta R.T. -0.048 min
 Lab File: VU048353.D
 Acq: 29 Apr 2022 12:50

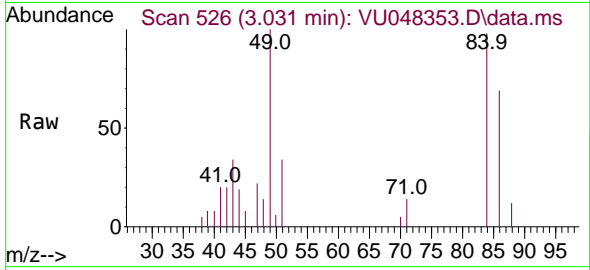
Tgt Ion: 96 Resp: 1778
 Ion Ratio Lower Upper
 96 100
 61 1286.8 107.9 200.3#
 63 11572.5 80.3 149.1#



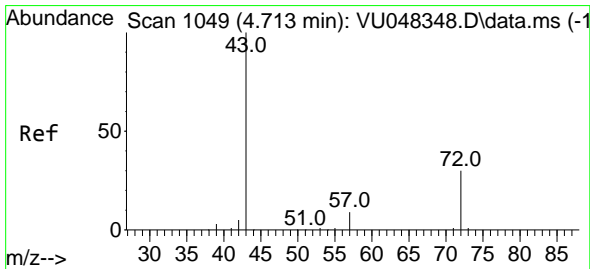
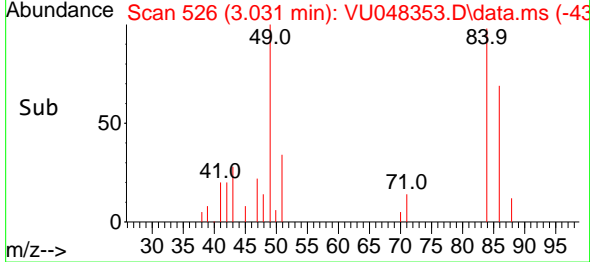
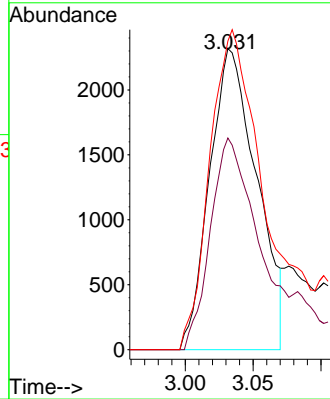


#16
 Methylene chloride
 Concen: 1.680 ug/L
 RT: 3.031 min Scan# 51
 Delta R.T. -0.016 min
 Lab File: VU048353.D
 Acq: 29 Apr 2022 12:50

Instrument :
 MSVOA_U
 ClientSampleId :
 EW476ME

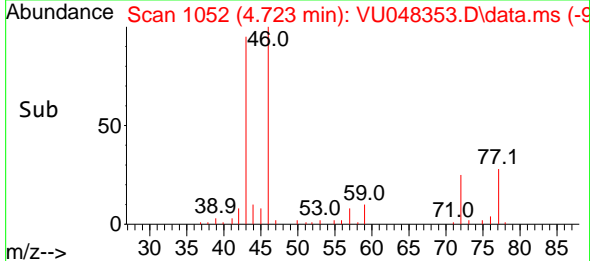
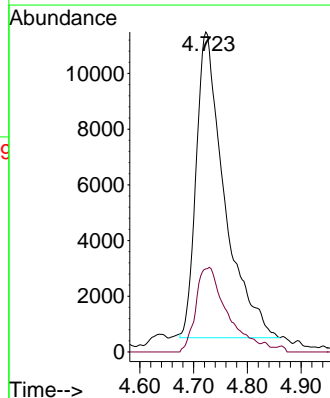
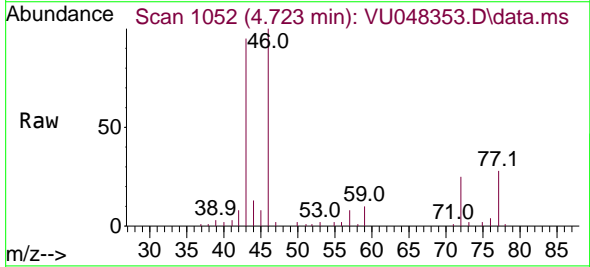


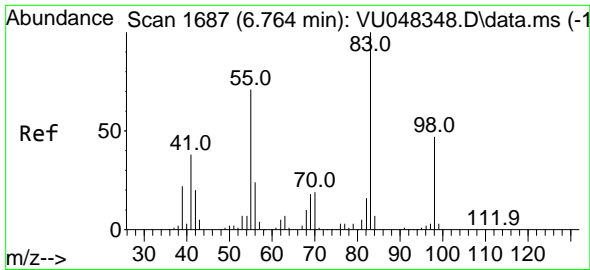
Tgt Ion: 84 Resp: 5603
 Ion Ratio Lower Upper
 84 100
 86 70.3 45.4 84.2
 49 102.5 79.2 147.0



#22
 2-Butanone
 Concen: 13.629 ug/L
 RT: 4.723 min Scan# 1052
 Delta R.T. 0.010 min
 Lab File: VU048353.D
 Acq: 29 Apr 2022 12:50

Tgt Ion: 43 Resp: 39920
 Ion Ratio Lower Upper
 43 100
 72 30.4 14.6 43.8

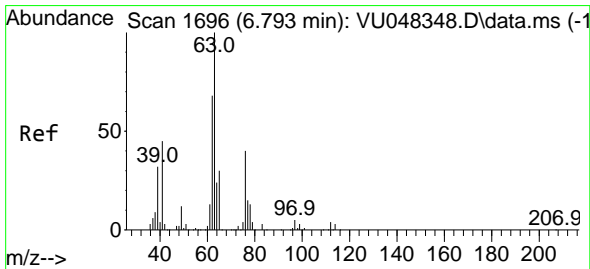
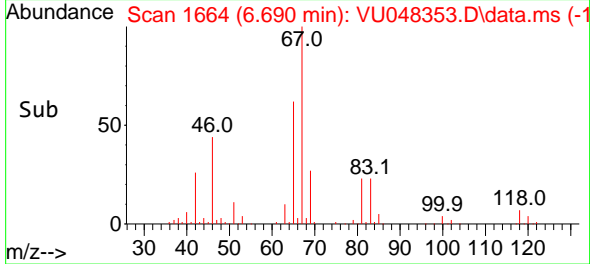
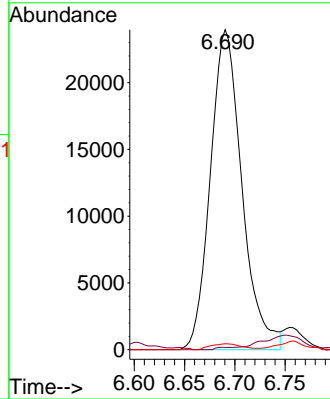
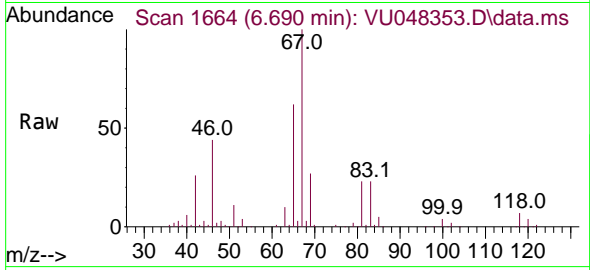




#35
 Methylcyclohexane
 Concen: 12.807 ug/L
 RT: 6.690 min Scan# 1664
 Delta R.T. -0.074 min
 Lab File: VU048353.D
 Acq: 29 Apr 2022 12:50

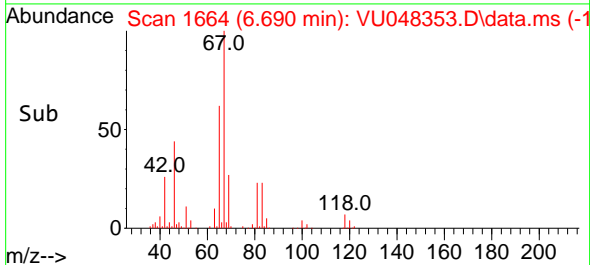
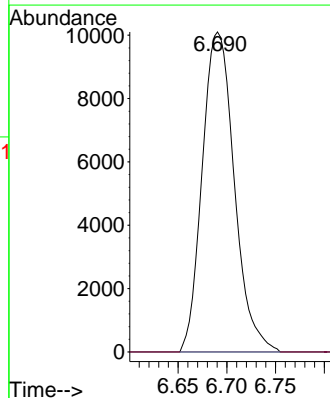
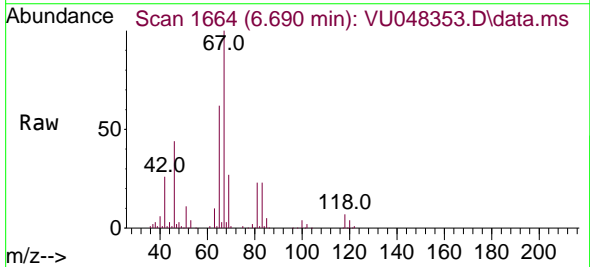
Instrument : MSVOA_U
 ClientSampleId : EW476ME

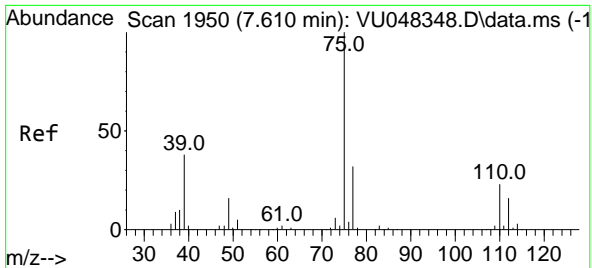
Tgt Ion: 83 Resp: 52300
 Ion Ratio Lower Upper
 83 100
 55 0.3 59.4 89.2#
 98 1.8 37.3 55.9#



#37
 1,2-Dichloropropane
 Concen: 6.852 ug/L
 RT: 6.690 min Scan# 1664
 Delta R.T. -0.103 min
 Lab File: VU048353.D
 Acq: 29 Apr 2022 12:50

Tgt Ion: 63 Resp: 23136
 Ion Ratio Lower Upper
 63 100
 112 0.0 3.1 4.7#

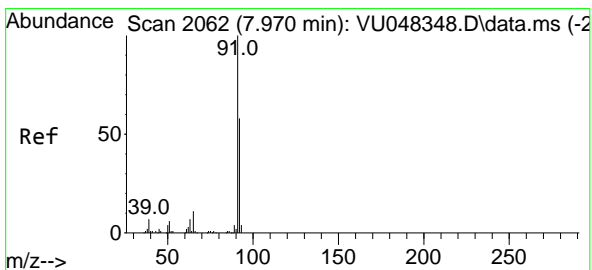
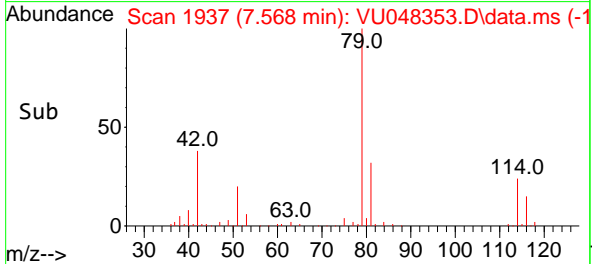
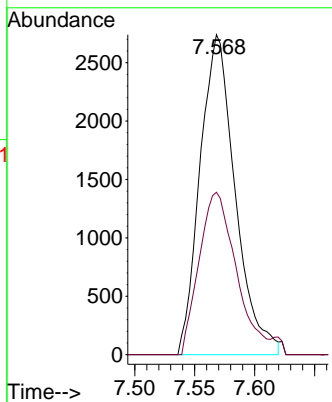
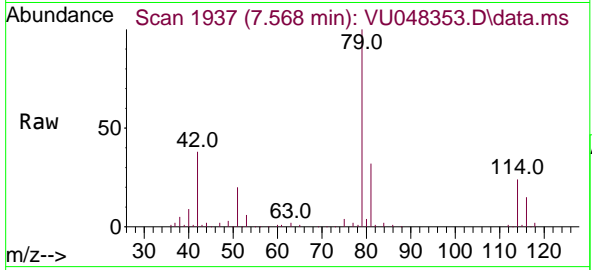




#39
 cis-1,3-Dichloropropene
 Concen: 1.177 ug/L
 RT: 7.568 min Scan# 1950
 Delta R.T. -0.042 min
 Lab File: VU048353.D
 Acq: 29 Apr 2022 12:50

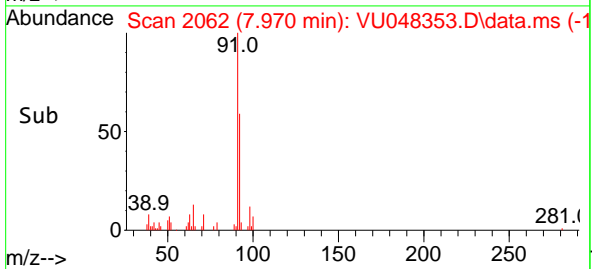
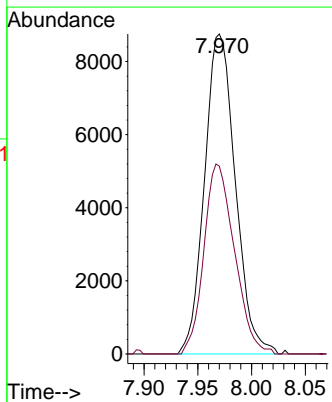
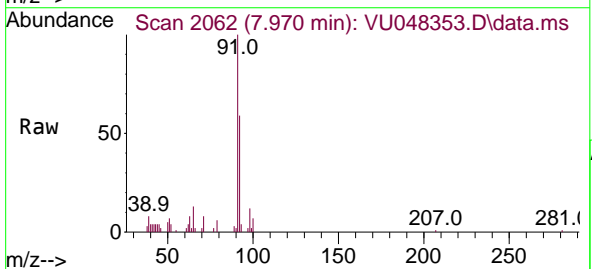
Instrument : MSVOA_U
 ClientSampleId : EW476ME

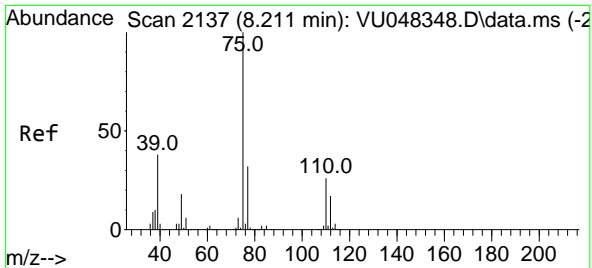
Tgt Ion: 75 Resp: 5586
 Ion Ratio Lower Upper
 75 100
 77 50.7 22.0 41.0#



#42
 Toluene
 Concen: 1.403 ug/L
 RT: 7.970 min Scan# 2062
 Delta R.T. -0.000 min
 Lab File: VU048353.D
 Acq: 29 Apr 2022 12:50

Tgt Ion: 91 Resp: 17480
 Ion Ratio Lower Upper
 91 100
 92 58.7 40.9 76.0

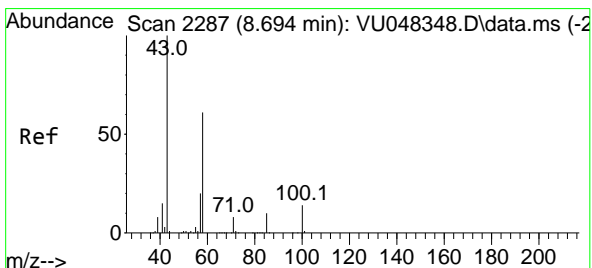
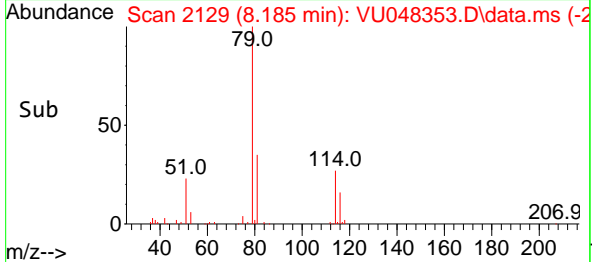
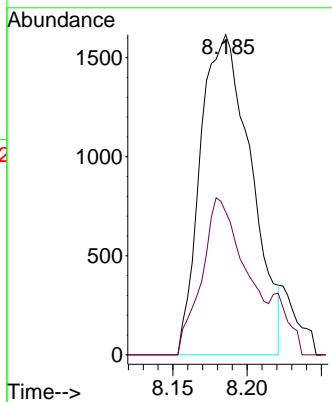
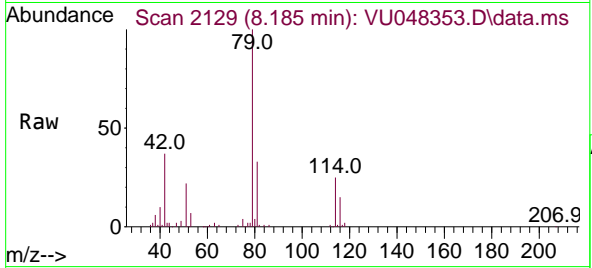




#44
 trans-1,3-Dichloropropene
 Concen: 0.824 ug/L
 RT: 8.185 min Scan# 2137
 Delta R.T. -0.026 min
 Lab File: VU048353.D
 Acq: 29 Apr 2022 12:50

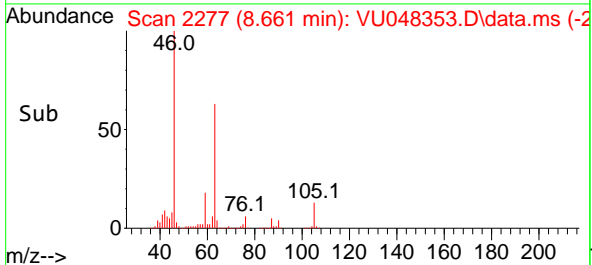
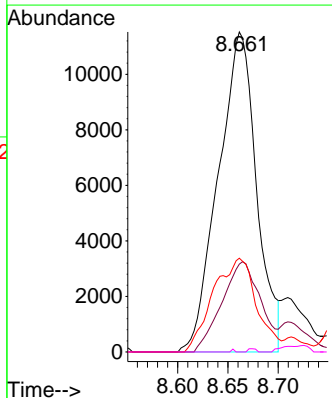
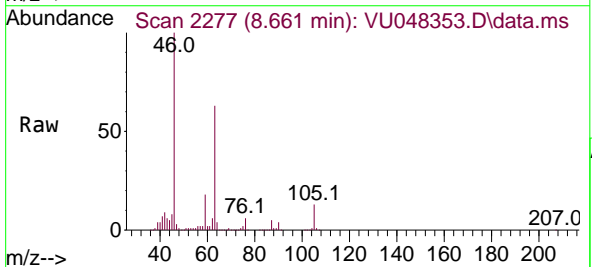
Instrument : MSVOA_U
 ClientSampleId : EW476ME

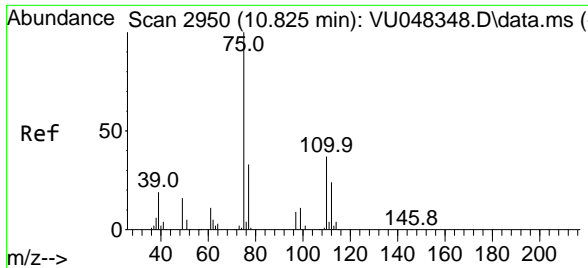
Tgt Ion: 75 Resp: 3824
 Ion Ratio Lower Upper
 75 100
 77 44.6 22.1 41.1#



#48
 2-Hexanone
 Concen: 7.161 ug/L
 RT: 8.661 min Scan# 2277
 Delta R.T. -0.032 min
 Lab File: VU048353.D
 Acq: 29 Apr 2022 12:50

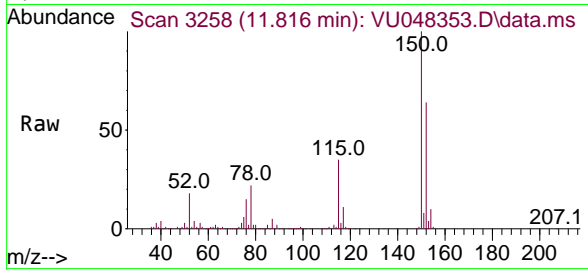
Tgt Ion: 43 Resp: 30451
 Ion Ratio Lower Upper
 43 100
 58 28.7 48.1 72.1#
 57 12.8 16.2 24.4#
 100 0.2 10.3 15.5#





#60
 1,2,3-Trichloropropane
 Concen: 4.369 ug/L
 RT: 11.816 min Scan# 31
 Delta R.T. 0.990 min
 Lab File: VU048353.D
 Acq: 29 Apr 2022 12:50

Instrument :
 MSVOA_U
 ClientSampleId :
 EW476ME



Tgt Ion: 75 Resp: 20759

Ion	Ratio	Lower	Upper
75	100		
77	33.8	25.8	38.8
110	2.0	29.9	44.9#

