

Data File : VU031647.D  
 Acq On : 30 Apr 2019 20:22  
 Operator : JC/SP  
 Sample : K2593-14 200X  
 Misc : 5.0mL/MSVOA\_U/WATER  
 ALS Vial : 24 Sample Multiplier: 1

Instrument :  
 MSVOA\_U  
 Client Sampled :  
 COXB1

Quant Time: May 01 01:44:42 2019  
 Quant Method : Z:\VOASRV\HPCHEM1\MSVOA\_U\METHOD\SOMULM042719WMA.M  
 Quant Title : VOC Analysis  
 QLast Update : Wed May 01 01:38:49 2019  
 Response via : Initial Calibration

Internal Standards	R.T.	QIon	Response	Conc	Units	Dev(Min)
1) 1,4-Difluorobenzene	5.88	114	702456	50.00	ug/L	0.00
28) Chlorobenzene-d5	9.09	117	670731	50.00	ug/L	0.00
60) 1,4-Dichlorobenzene-d4	11.48	152	230823	50.00	ug/L	0.00

System Monitoring Compounds

4) Vinyl Chloride-d3	1.40	65	306270	52.10	ug/L	0.00
Spiked Amount	50.000	Range	60 - 135	Recovery	=	104.20%
7) Chloroethane-d5	1.68	69	225433	49.62	ug/L	0.00
Spiked Amount	50.000	Range	70 - 130	Recovery	=	99.24%
11) 1,1-Dichloroethene-d2	2.37	63	245	0.02	ug/L	0.10
Spiked Amount	50.000	Range	60 - 125	Recovery	=	0.04%#
21) 2-Butanone-d5	4.19	46	532111	99.90	ug/L	0.00
Spiked Amount	100.000	Range	40 - 130	Recovery	=	99.90%
24) Chloroform-d	4.64	84	523659	48.64	ug/L	0.00
Spiked Amount	50.000	Range	70 - 125	Recovery	=	97.28%
26) 1,2-Dichloroethane-d4	5.30	65	362704	51.56	ug/L	0.00
Spiked Amount	50.000	Range	70 - 125	Recovery	=	103.12%
32) Benzene-d6	5.33	84	1001616	48.63	ug/L	0.00
Spiked Amount	50.000	Range	70 - 125	Recovery	=	97.26%
36) 1,2-Dichloropropane-d6	6.32	67	362874	50.08	ug/L	0.00
Spiked Amount	50.000	Range	70 - 120	Recovery	=	100.16%
41) Toluene-d8	7.56	98	808260	45.06	ug/L	0.00
Spiked Amount	50.000	Range	80 - 120	Recovery	=	90.12%
43) trans-1,3-Dichloropropene-	7.85	79	140448	45.15	ug/L	0.00
Spiked Amount	50.000	Range	60 - 125	Recovery	=	90.30%
47) 2-Hexanone-d5	8.31	63	290872	92.74	ug/L	0.00
Spiked Amount	100.000	Range	45 - 130	Recovery	=	92.74%
57) 1,1,2,2-Tetrachloroethane-	10.43	84	446176	45.88	ug/L	0.00
Spiked Amount	50.000	Range	65 - 120	Recovery	=	91.76%
64) 1,2-Dichlorobenzene-d4	11.86	152	227706	46.91	ug/L	0.00
Spiked Amount	50.000	Range	80 - 120	Recovery	=	93.82%

Target Compounds

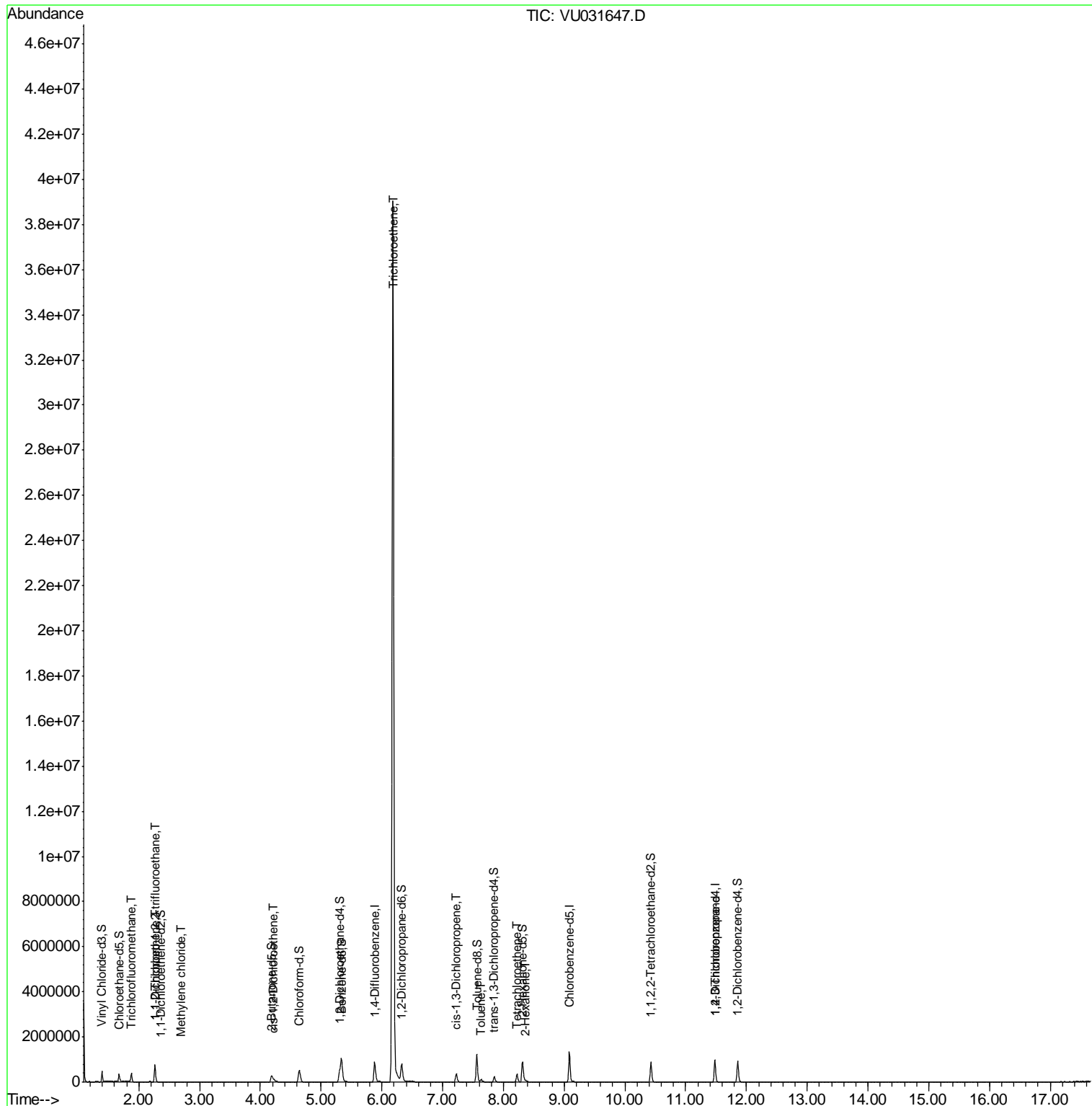
						Qvalue
9) Trichlorofluoromethane	1.88	101	220661	22.153	ug/L	97
10) 1,1,2-Trichloro-1,2,2-trif	2.27	101	3686	0.655	ug/L #	22
12) 1,1-Dichloroethene	2.27	96	3703	0.676	ug/L #	1
16) Methylene chloride	2.70	84	6291	0.973	ug/L	98
20) cis-1,2-Dichloroethene	4.22	96	10310	1.683	ug/L	82
34) Trichloroethene	6.18	95	14203537	2376.093	ug/L	94
39) cis-1,3-Dichloropropene	7.23	75	8640	0.934	ug/L #	60
42) Toluene	7.64	91	70730	2.879	ug/L	94
46) Tetrachloroethene	8.22	164	78896	19.360	ug/L	98
48) 2-Hexanone	8.37	43	20764	2.384	ug/L #	43
59) 1,2,3-Trichloropropane	11.48	75	34679	4.178	ug/L	94

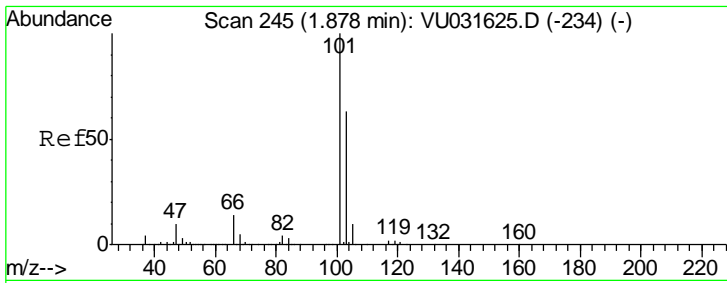
(#) = qualifier out of range (m) = manual integration (+) = signals summed

Data File : VU031647.D  
Acq On : 30 Apr 2019 20:22  
Operator : JC/SP  
Sample : K2593-14 200X  
Misc : 5.0mL/MSVOA\_U/WATER  
ALS Vial : 24 Sample Multiplier: 1

Instrument :  
MSVOA\_U  
ClientSampled :  
C0XB1

Quant Time: May 01 01:44:42 2019  
Quant Method : Z:\VOASRV\HPCHEM1\MSVOA\_U\METHOD\SOMULM042719WMA.M  
Quant Title : VOC Analysis  
QLast Update : Wed May 01 01:38:49 2019  
Response via : Initial Calibration

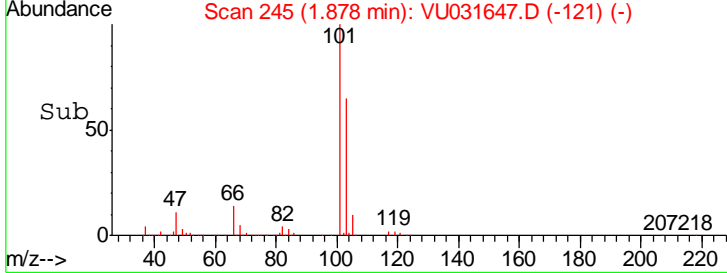
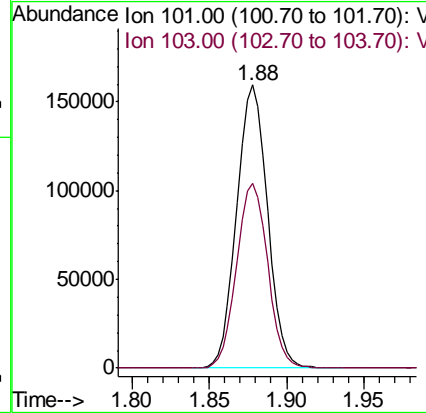
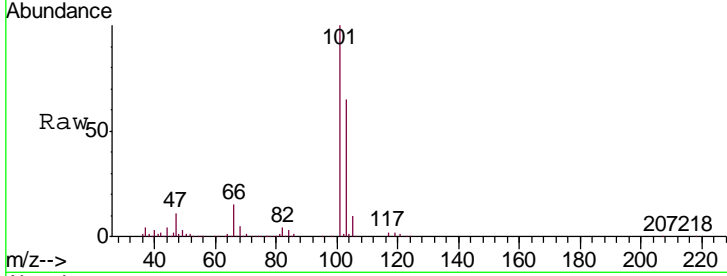




#9  
 Trichlorofluoromethane  
 Concen: 22.153 ug/L  
 RT: 1.88 min Scan# 245  
 Delta R.T. 0.00 min  
 Lab File: VU031647.D  
 Acq: 30 Apr 2019 20:22

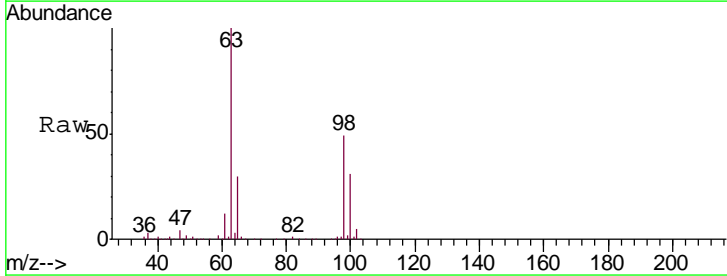
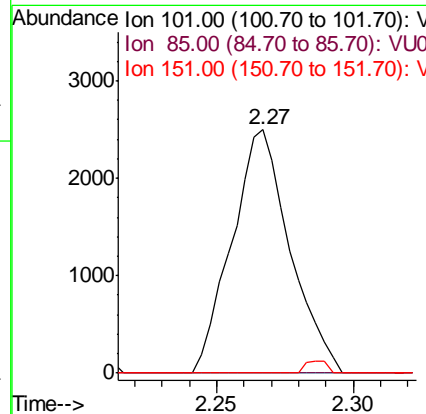
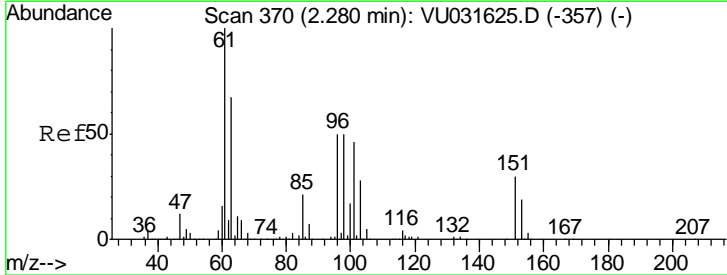
Instrument : MSVOA\_U  
 ClientSampled : COXB1

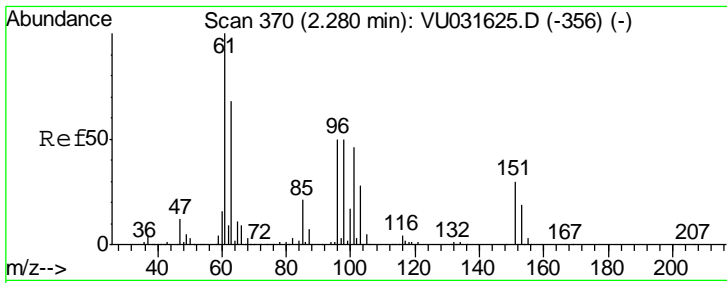
Tgt Ion	Resp	Lower	Upper
101	220661		
103	65.8	50.8	76.2



#10  
 1,1,2-Trichloro-1,2,2-trifluoroethane  
 Concen: 0.655 ug/L  
 RT: 2.27 min Scan# 366  
 Delta R.T. -0.01 min  
 Lab File: VU031647.D  
 Acq: 30 Apr 2019 20:22

Tgt Ion	Resp	Lower	Upper
101	3686		
85	0.0	36.1	54.1#
151	1.8	56.1	84.1#

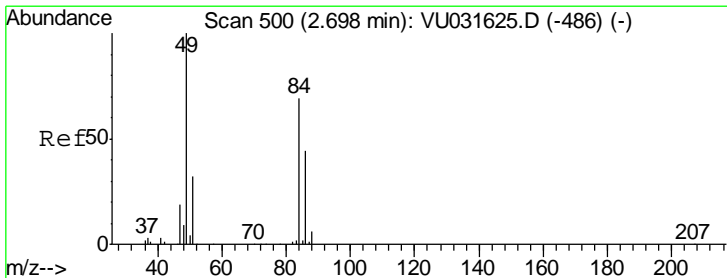
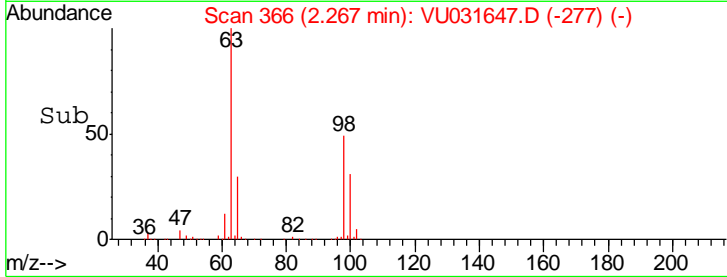
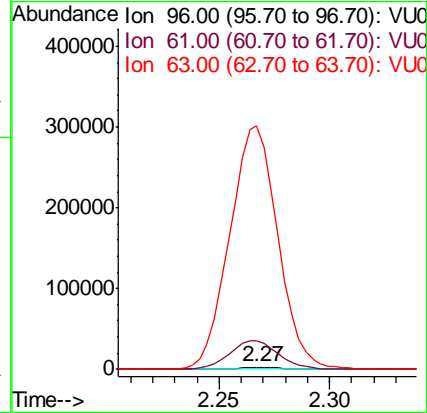
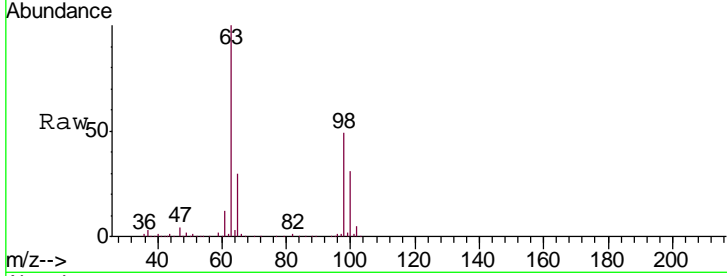




#12  
 1,1-Dichloroethene  
 Concen: 0.676 ug/L  
 RT: 2.27 min Scan# 366  
 Delta R.T. -0.01 min  
 Lab File: VU031647.D  
 Acq: 30 Apr 2019 20:22

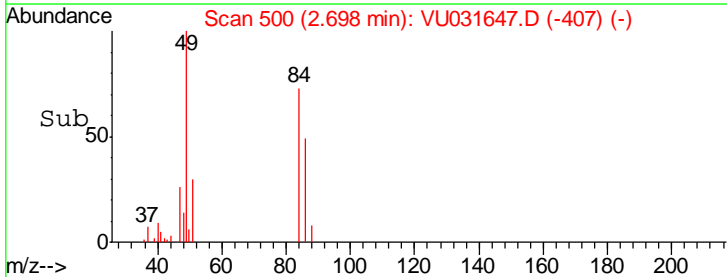
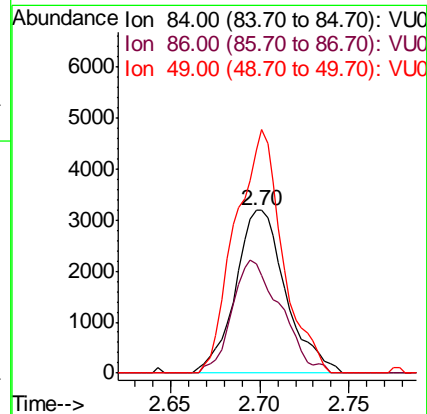
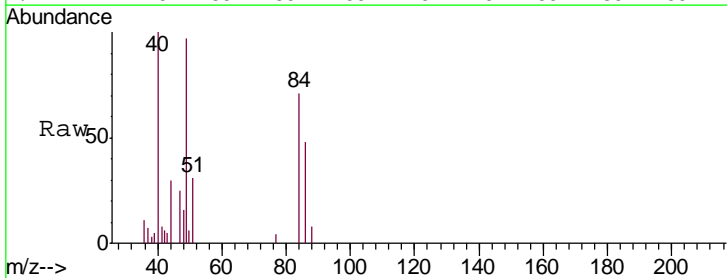
Instrument :  
 MSVOA\_U  
 ClientSampled :  
 COXB1

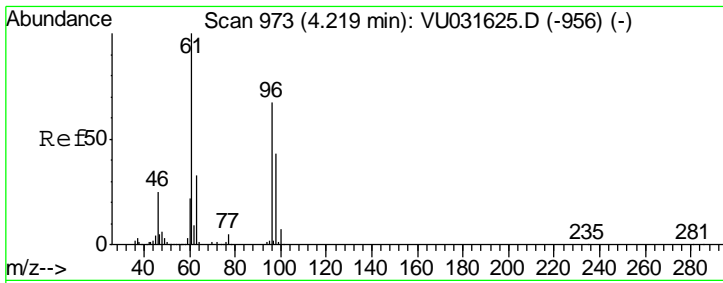
Tgt Ion	Resp	Lower	Upper
96	100		
61	1571.5	135.0	250.6#
63	13415.2	103.5	192.3#



#16  
 Methylene chloride  
 Concen: 0.973 ug/L  
 RT: 2.70 min Scan# 500  
 Delta R.T. 0.00 min  
 Lab File: VU031647.D  
 Acq: 30 Apr 2019 20:22

Tgt Ion	Resp	Lower	Upper
84	100		
86	66.7	44.7	83.1
49	136.7	96.5	179.3

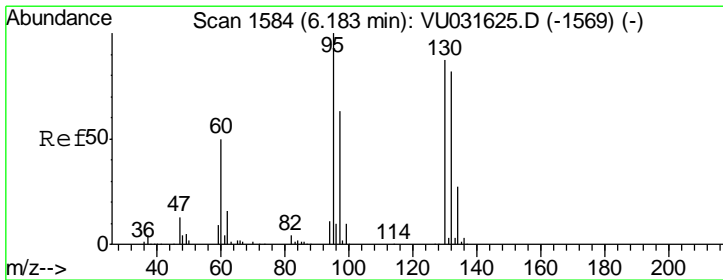
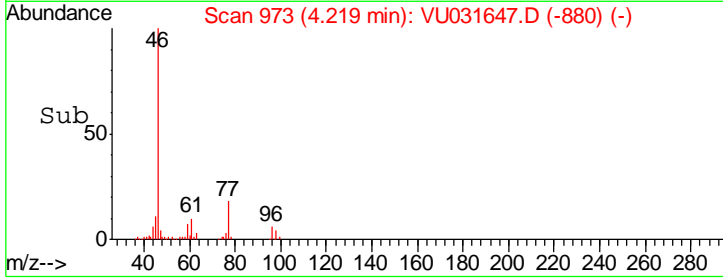
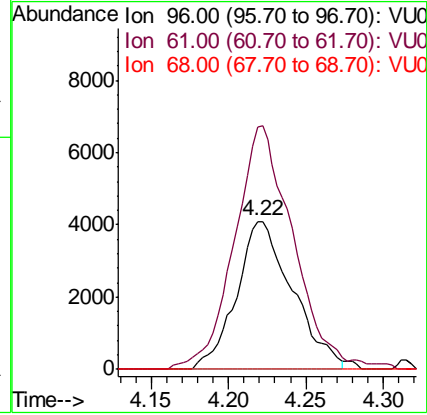
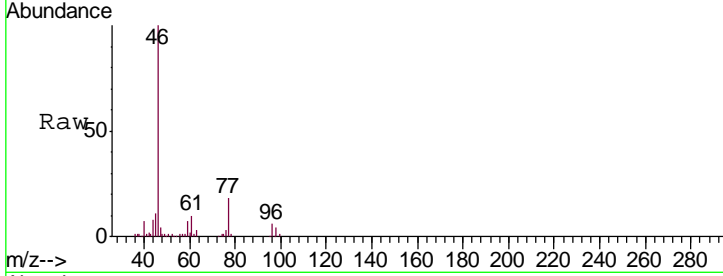




#20  
 cis-1,2-Dichloroethene  
 Concen: 1.683 ug/L  
 RT: 4.22 min Scan# 973  
 Delta R.T. 0.00 min  
 Lab File: VU031647.D  
 Acq: 30 Apr 2019 20:22

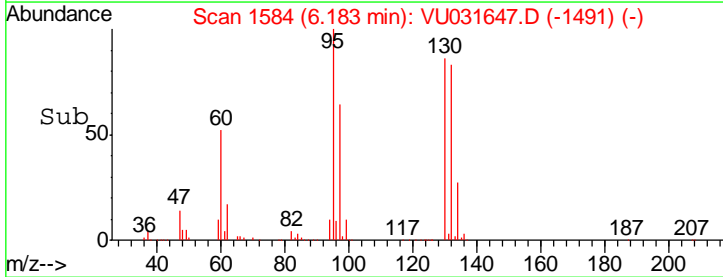
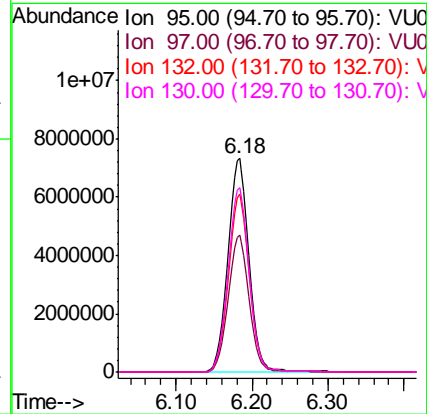
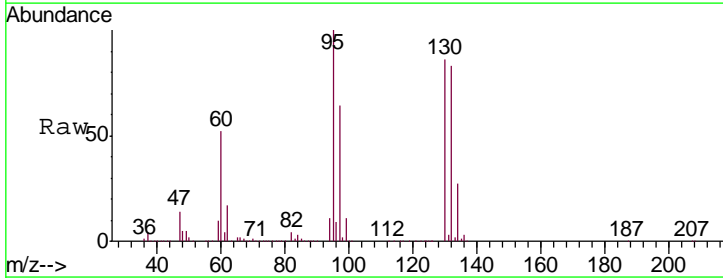
Instrument : MSVOA\_U  
 ClientSampled : COXB1

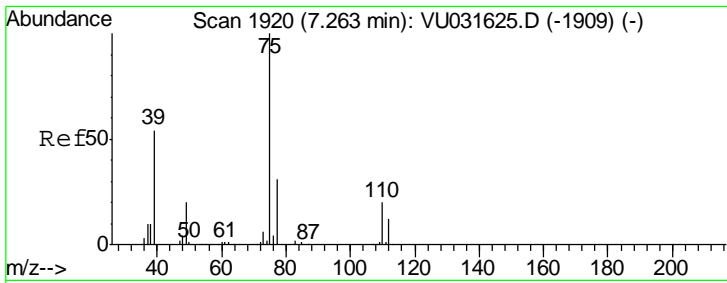
Tgt Ion	Resp	Lower	Upper
96	10310		
61	164.2	99.5	184.7
68	0.0	0.0	0.0



#34  
 Trichloroethene  
 Concen: 2376.093 ug/L  
 RT: 6.18 min Scan# 1584  
 Delta R.T. 0.00 min  
 Lab File: VU031647.D  
 Acq: 30 Apr 2019 20:22

Tgt Ion	Resp	Lower	Upper
95	14203537		
97	64.1	44.8	83.2
132	83.3	63.1	117.1
130	86.4	66.5	123.5

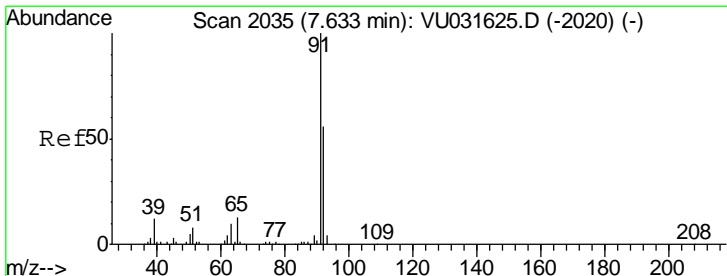
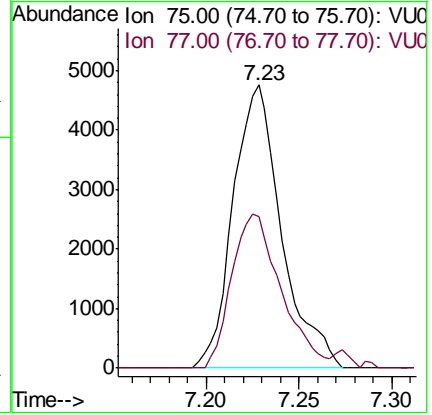
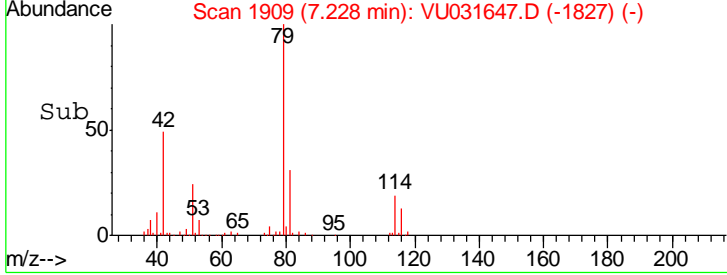
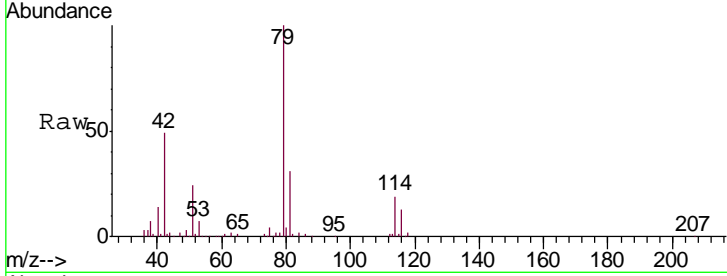




#39  
 cis-1,3-Dichloropropene  
 Concen: 0.934 ug/L  
 RT: 7.23 min Scan# 1909  
 Delta R.T. -0.04 min  
 Lab File: VU031647.D  
 Acq: 30 Apr 2019 20:22

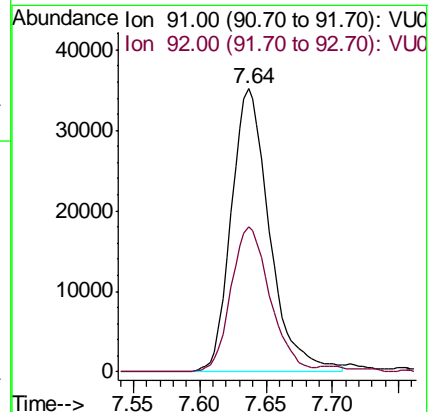
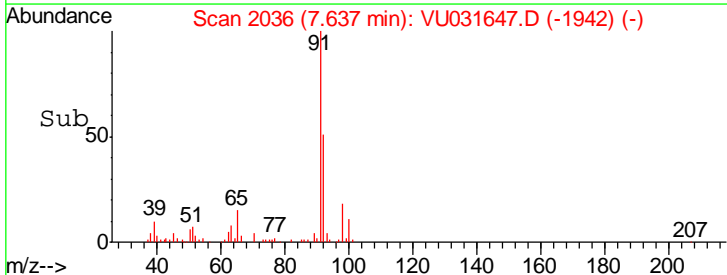
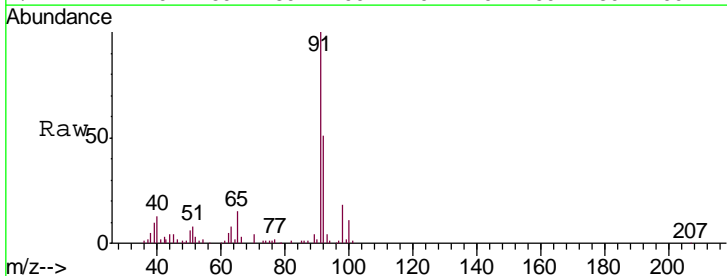
Instrument : MSVOA\_U  
 ClientSampled : COXB1

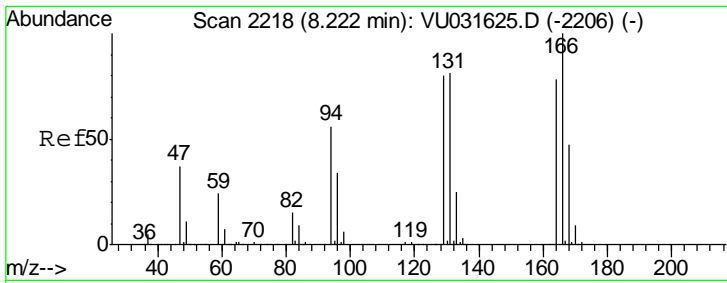
Tgt Ion: 75 Resp: 8640  
 Ion Ratio Lower Upper  
 75 100  
 77 53.5 22.1 41.1#



#42  
 Toluene  
 Concen: 2.879 ug/L  
 RT: 7.64 min Scan# 2036  
 Delta R.T. 0.00 min  
 Lab File: VU031647.D  
 Acq: 30 Apr 2019 20:22

Tgt Ion: 91 Resp: 70730  
 Ion Ratio Lower Upper  
 91 100  
 92 51.2 39.0 72.4



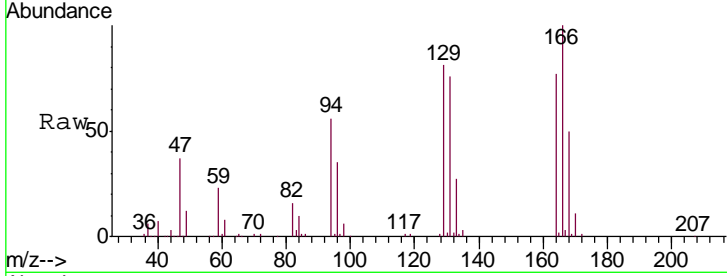


#46

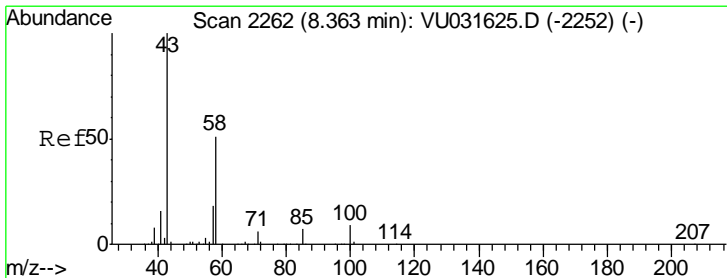
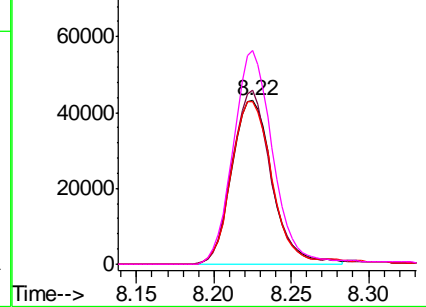
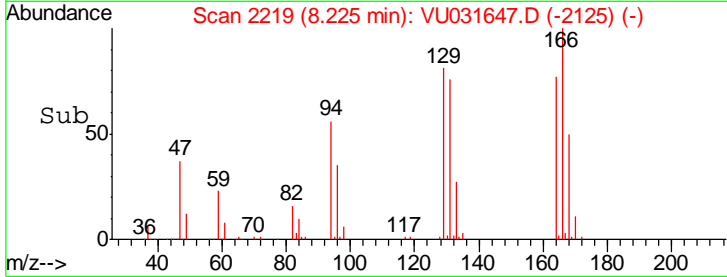
Tetrachloroethene  
 Concen: 19.360 ug/L  
 RT: 8.22 min Scan# 2219  
 Delta R.T. 0.00 min  
 Lab File: VU031647.D  
 Acq: 30 Apr 2019 20:22

Instrument :  
 MSVOA\_U  
 ClientSampled :  
 COXB1

Tgt Ion	Resp	Lower	Upper
164	100		
129	106.2	71.5	132.9
131	99.2	69.0	128.2
166	130.6	93.7	173.9



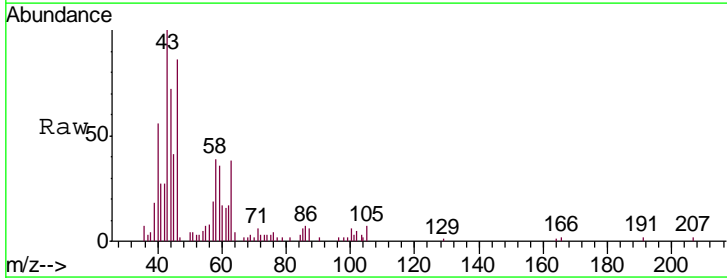
Abundance Ion 164.00 (163.70 to 164.70): V  
 Ion 129.00 (128.70 to 129.70): V  
 Ion 131.00 (130.70 to 131.70): V  
 Ion 166.00 (165.70 to 166.70): V



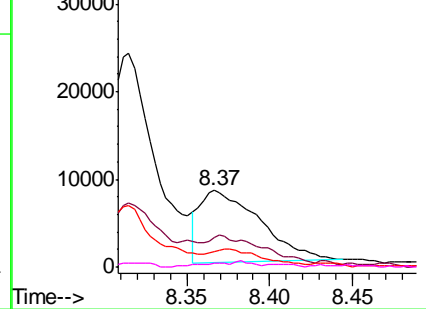
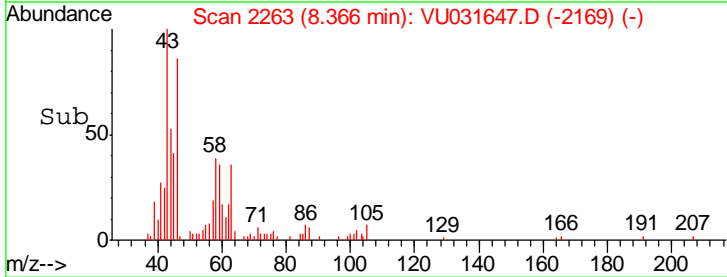
#48

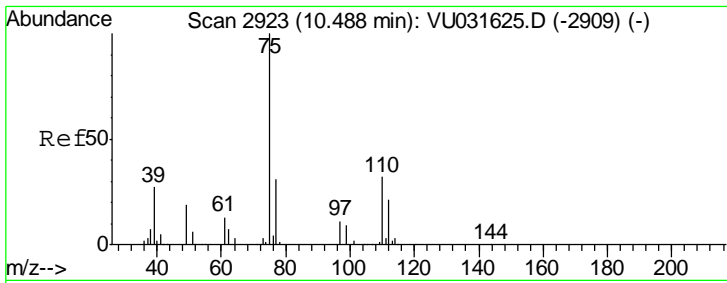
2-Hexanone  
 Concen: 2.384 ug/L  
 RT: 8.37 min Scan# 2263  
 Delta R.T. 0.00 min  
 Lab File: VU031647.D  
 Acq: 30 Apr 2019 20:22

Tgt Ion	Resp	Lower	Upper
43	100		
58	3.8	42.1	63.1#
57	0.0	14.6	22.0#
100	3.2	7.2	10.8#



Abundance Ion 43.00 (42.70 to 43.70): VUC  
 Ion 58.00 (57.70 to 58.70): VUC  
 Ion 57.00 (56.70 to 57.70): VUC  
 Ion 100.00 (99.70 to 100.70): VUC





#59  
 1,2,3-Trichloropropane  
 Concen: 4.178 ug/L  
 RT: 11.48 min Scan# 3231  
 Delta R.T. 0.99 min  
 Lab File: VU031647.D  
 Acq: 30 Apr 2019 20:22

Instrument :  
 MSVOA\_U  
 ClientSampled :  
 COXB1

Tgt Ion: 75 Resp: 34679  
 Ion Ratio Lower Upper  
 75 100  
 77 36.0 25.9 38.9

