

Data Path : Z:\voasrv\HPCHEM1\MSVOA_U\Data\VU043021\
 Data File : VU043470.D
 Acq On : 30 Apr 2021 12:51
 Operator : SY/MD
 Sample : M2197-07
 Misc : 25.0mL/MSVOA_U/WATER
 ALS Vial : 9 Sample Multiplier: 1

Instrument :
 MSVOA_U
 ClientSampleId :
 YARG6

Integration Parameters: rteint.p
 Integrator: RTE
 Smoothing : ON Filtering: 5
 Sampling : 1 Min Area: 3 % of largest Peak
 Start Thrs: 0.1 Max Peaks: 100
 Stop Thrs : 0 Peak Location: TOP

If leading or trailing edge < 100 prefer < Baseline drop else tangent >
 Peak separation: 5

Method : Z:\voasrv\HPCHEM1\MSVOA_U\Method\SFAMUTR041521WMA.M
 Title : TRACE VOA SFAM1.0

Signal : TIC: VU043470.D\data.ms

peak #	R.T. min	first scan	max scan	last scan	PK TY	peak height	corr. area	corr. % max.	% of total
1	1.363	3	7	21	rVB3	33535	33951	4.82%	0.956%
2	1.507	36	52	67	rBV2	157417	704810	100.00%	19.842%
3	2.575	370	384	399	rBV	57167	96055	13.63%	2.704%
4	2.806	443	456	464	rBV2	4579	8845	1.25%	0.249%
5	4.645	1011	1028	1065	rBV	64073	184914	26.24%	5.206%
6	5.073	1144	1161	1185	rVB	64328	151893	21.55%	4.276%
7	5.735	1346	1367	1390	rBV3	114334	305389	43.33%	8.598%
8	6.256	1515	1529	1546	rBV	114133	213839	30.34%	6.020%
9	6.549	1609	1620	1635	rBV2	35359	65557	9.30%	1.846%
10	6.700	1653	1667	1684	rVB	80654	154645	21.94%	4.354%
11	7.575	1926	1939	1952	rBV	36451	62544	8.87%	1.761%
12	7.906	2028	2042	2057	rBV	127826	217921	30.92%	6.135%
13	8.185	2118	2129	2143	rBV	22785	38984	5.53%	1.098%
14	8.558	2236	2245	2256	rVB3	13745	21988	3.12%	0.619%
15	8.645	2258	2272	2302	rBV	222964	443970	62.99%	12.499%
16	9.423	2501	2514	2530	rBV	168338	279914	39.71%	7.880%
17	10.764	2919	2931	2943	rBV	62289	98516	13.98%	2.773%
18	11.819	3248	3259	3274	rVB	161405	255174	36.20%	7.184%
19	12.198	3366	3377	3392	rBV	133221	213150	30.24%	6.001%

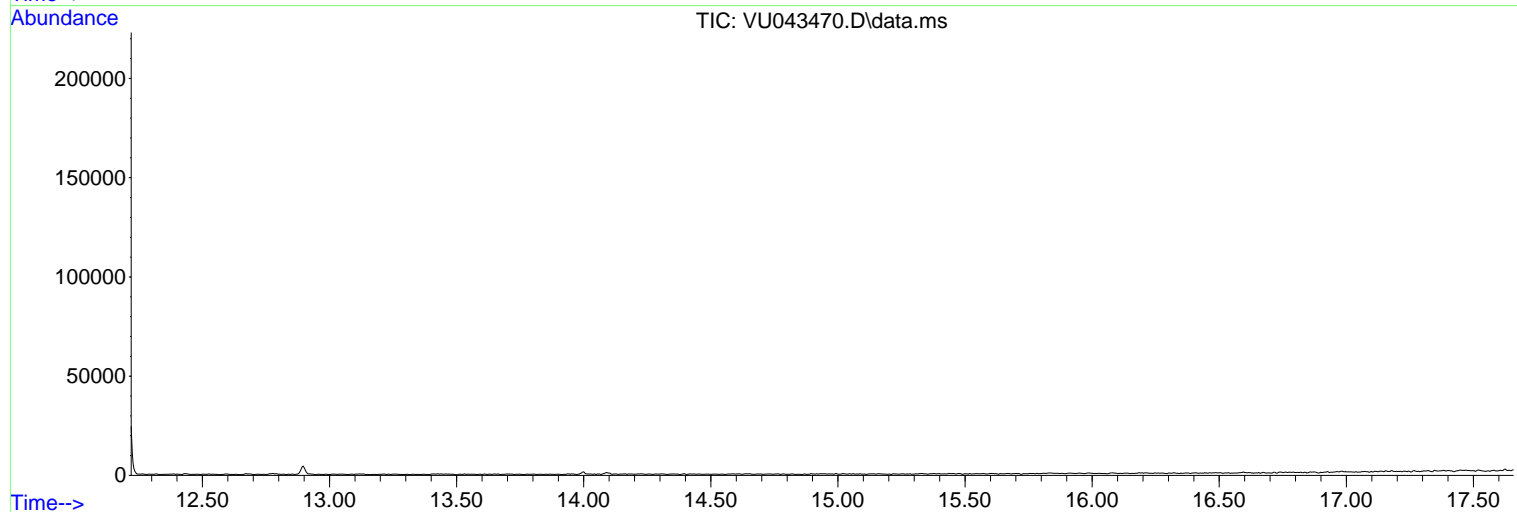
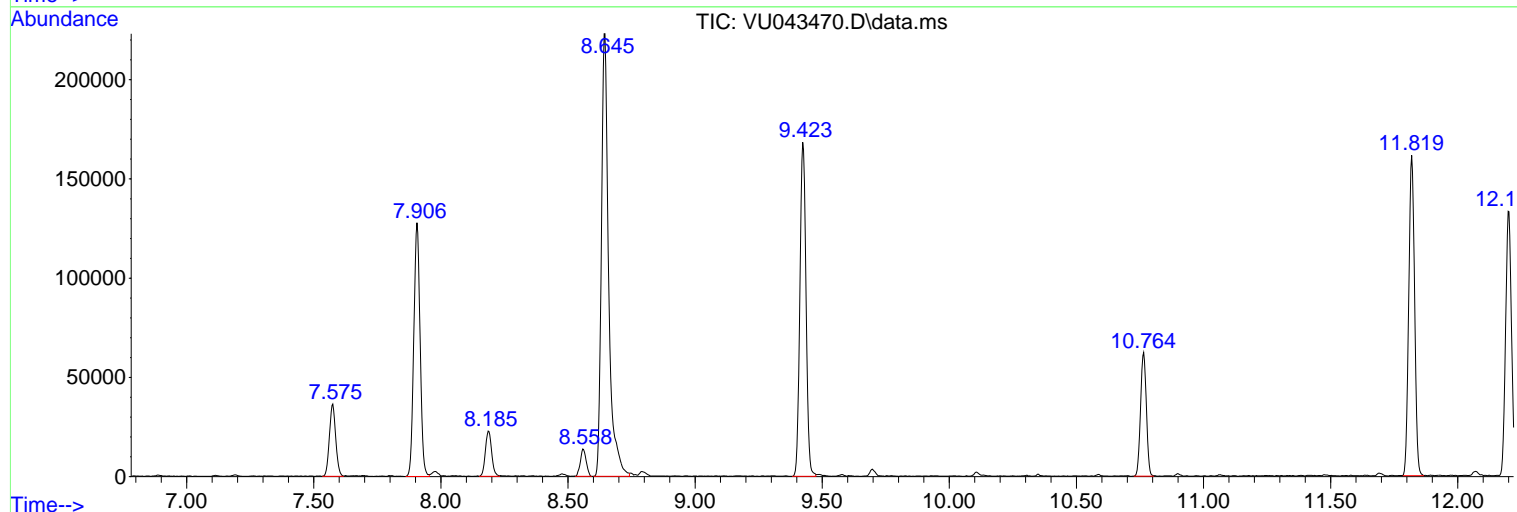
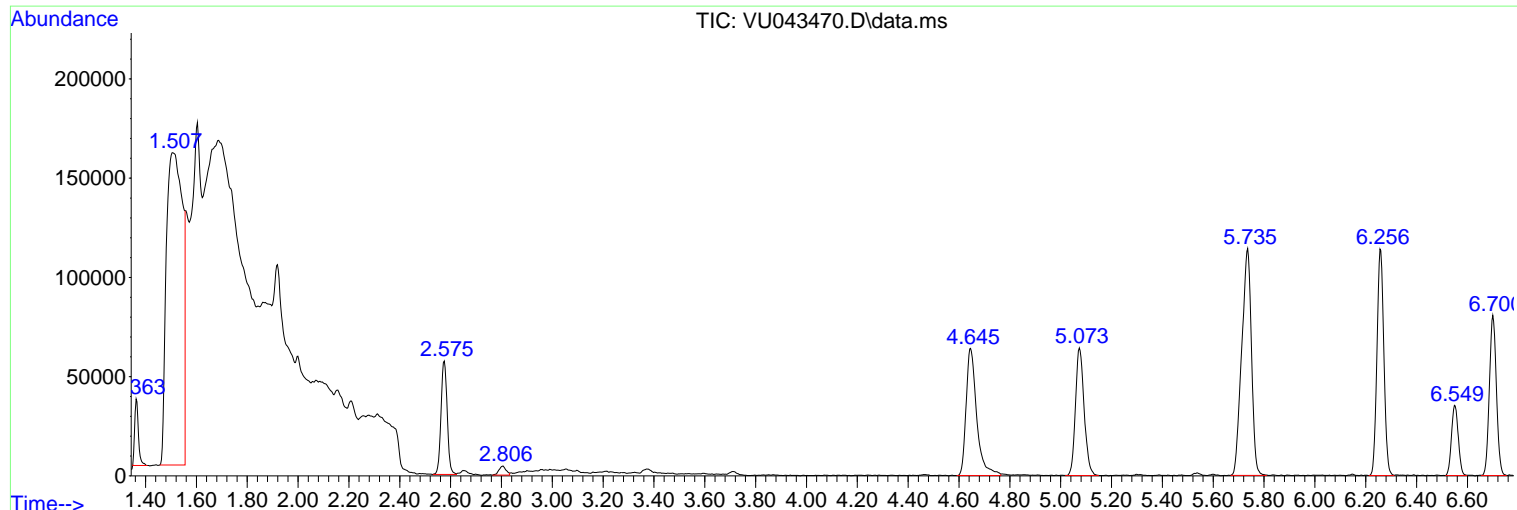
Sum of corrected areas: 3552059

Data Path : Z:\voasrv\HPCHEM1\MSVOA_U\Data\VU043021\
Data File : VU043470.D
Acq On : 30 Apr 2021 12:51
Operator : SY/MD
Sample : M2197-07
Misc : 25.0mL/MSVOA_U/WATER
ALS Vial : 9 Sample Multiplier: 1

Instrument :
MSVOA_U
ClientSampled :
YARG6

Quant Method : Z:\voasrv\HPCHEM1\MSVOA_U\Method\SFAMUTR041521WMA.M
Quant Title : TRACE VOA SFAM1.0

TIC Library : C:\DATABASE\NIST11.L
TIC Integration Parameters: LSCINT.P



Data Path : Z:\voasrv\HPCHEM1\MSVOA_U\Data\VU043021\
 Data File : VU043470.D
 Acq On : 30 Apr 2021 12:51
 Operator : SY/MD
 Sample : M2197-07
 Misc : 25.0mL/MSVOA_U/WATER
 ALS Vial : 9 Sample Multiplier: 1

Instrument :
 MSVOA_U
 ClientSampled :
 YARG6

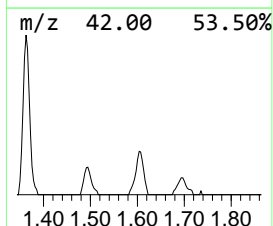
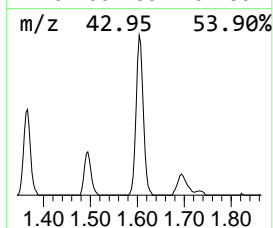
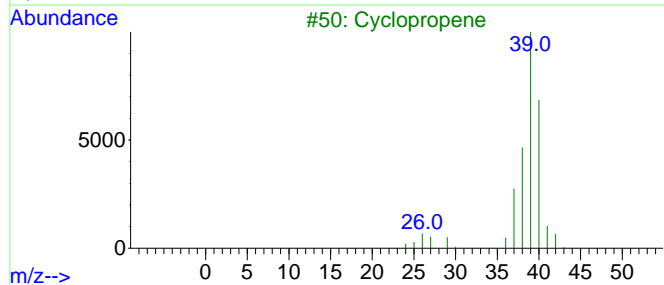
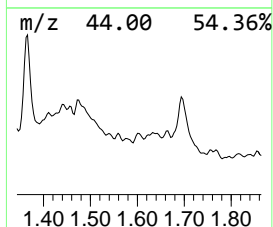
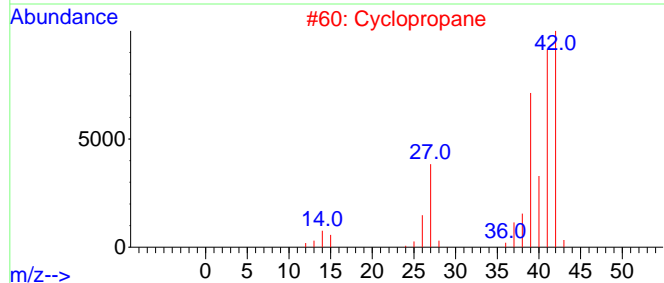
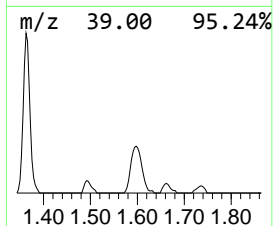
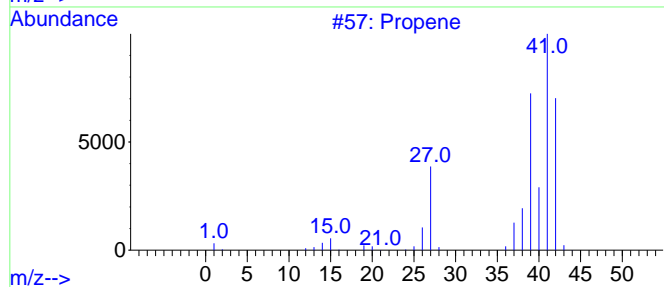
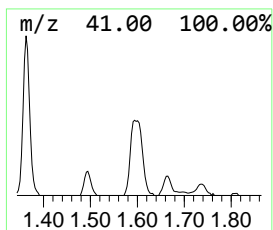
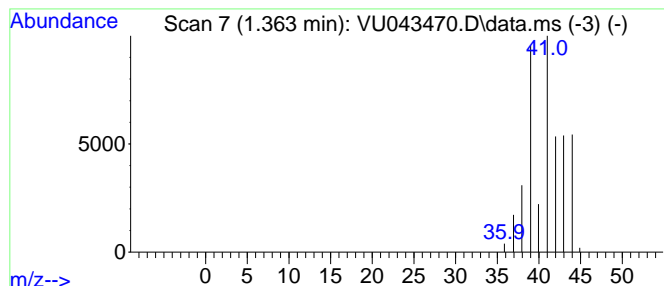
Quant Method : Z:\voasrv\HPCHEM1\MSVOA_U\Method\SFAMUTR041521WMA.M
 Quant Title : TRACE VOA SFAM1.0

TIC Library : C:\DATABASE\NIST11.L
 TIC Integration Parameters: LSCINT.P

 Peak Number 1 (DEL) Alkane: Cyclic1.363 Concentration Rank 3

R.T.	EstConc	Area	Relative to ISTD	R.T.
1.363	0.79 ug/L	33951	1,4-Difluorobenzene	6.256

Hit#	of 5	Tentative ID	MW	MolForm	CAS#	Qual
1		Propene	42	C3H6	000115-07-1	9
2		Cyclopropane	42	C3H6	000075-19-4	4
3		Cyclopropene	40	C3H4	002781-85-3	4
4		Propane	44	C3H8	000074-98-6	4
5		Cyclobutylamine	71	C4H9N	002516-34-9	2



Data Path : Z:\voasrv\HPCHEM1\MSVOA_U\Data\VU043021\
 Data File : VU043470.D
 Acq On : 30 Apr 2021 12:51
 Operator : SY/MD
 Sample : M2197-07
 Misc : 25.0mL/MSVOA_U/WATER
 ALS Vial : 9 Sample Multiplier: 1

Instrument :
 MSVOA_U
 ClientSampled :
 YARG6

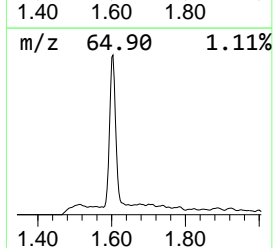
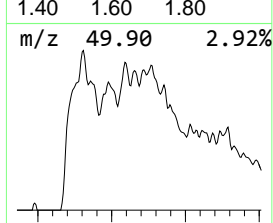
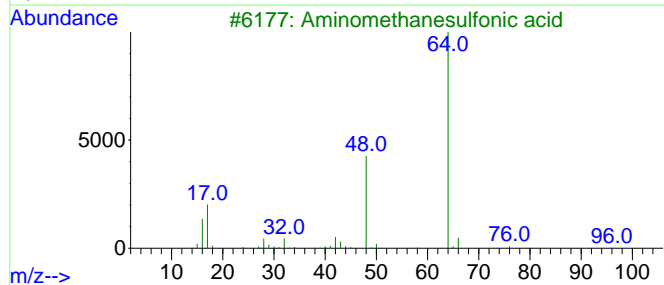
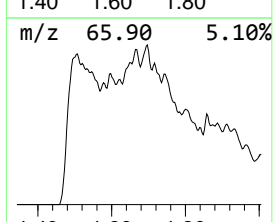
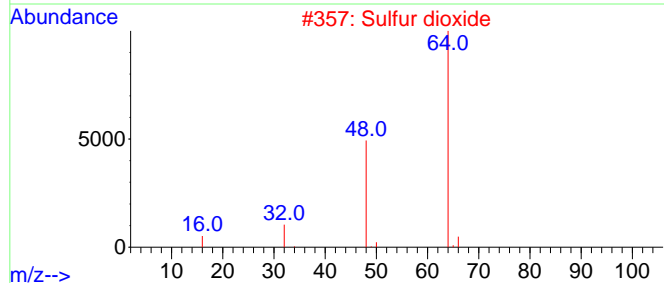
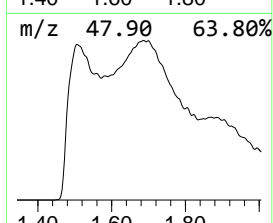
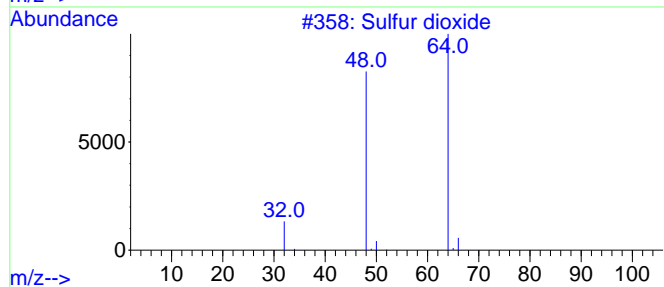
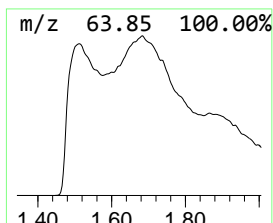
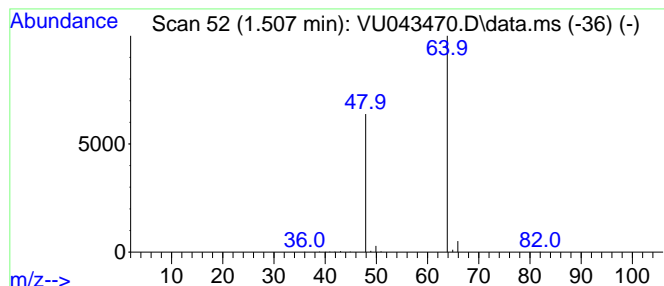
Quant Method : Z:\voasrv\HPCHEM1\MSVOA_U\Method\SFAMUTR041521WMA.M
 Quant Title : TRACE VOA SFAM1.0

TIC Library : C:\DATABASE\NIST11.L
 TIC Integration Parameters: LSCINT.P

 Peak Number 2 Sulfur dioxide Concentration Rank 1

R.T.	EstConc	Area	Relative to ISTD	R.T.
1.507	16.48 ug/L	704810	1,4-Difluorobenzene	6.256

Hit#	of	5	Tentative ID	MW	MolForm	CAS#	Qual
1			Sulfur dioxide	64	O2S	007446-09-5	83
2			Sulfur dioxide	64	O2S	007446-09-5	83
3			Aminomethanesulfonic acid	111	CH5NO3S	013881-91-9	74
4			Aminomethanesulfonic acid	111	CH5NO3S	013881-91-9	9
5			Aminomethanesulfonic acid	111	CH5NO3S	013881-91-9	9



Data Path : Z:\voasrv\HPCHEM1\MSVOA_U\Data\VU043021\
Data File : VU043470.D
Acq On : 30 Apr 2021 12:51
Operator : SY/MD
Sample : M2197-07
Misc : 25.0mL/MSVOA_U/WATER
ALS Vial : 9 Sample Multiplier: 1

Instrument :
MSVOA_U
ClientSampled :
YARG6

Quant Method : Z:\voasrv\HPCHEM1\MSVOA_U\Method\SFAMUTR041521WMA.M
Quant Title : TRACE VOA SFAM1.0

TIC Library : C:\DATABASE\NIST11.L
TIC Integration Parameters: LSCINT.P

TIC Top Hit name	RT	EstConc	Units	Response	--Internal Standard--			
					#	RT	Resp	Conc
(DEL) Alkane: C...	1.363	0.8	ug/L	33951	1	6.256	213839	5.0
Sulfur dioxide	1.507	16.5	ug/L	704810	1	6.256	213839	5.0