

Data Path : Z:\voasrv\HPCHEM1\MSVOA_U\Data\VU043023\
 Data File : VU054001.D
 Acq On : 29 Apr 2023 21:10
 Operator : JC/MD
 Sample : 02565-11 50X
 Misc : 5.0mL/MSVOA_U/WATER
 ALS Vial : 23 Sample Multiplier: 1

Instrument :
 MSVOA_U
 ClientSampleId :
 C0AY4

Integration Parameters: LSCINT.P

Integrator: RTE
 Smoothing : OFF Filtering: 5
 Sampling : 1 Min Area: 0 % of largest Peak
 Start Thrs: 0.2 Max Peaks: 100
 Stop Thrs : 0 Peak Location: TOP

If leading or trailing edge < 100 prefer < Baseline drop else tangent >
 Peak separation: 5

Method : Z:\voasrv\HPCHEM1\MSVOA_U\Method\SFAMULM042923WMA.M
 Title : VOC Analysis

Signal : TIC: VU054001.D\data.ms

peak #	R.T. min	first scan	max scan	last scan	PK TY	peak height	corr. area	corr. % max.	% of total
1	1.601	73	81	96	rVB	120949	146114	14.57%	1.937%
2	1.912	170	178	199	rVB	85260	118206	11.79%	1.567%
3	2.565	369	381	400	rBV	213844	347749	34.68%	4.610%
4	2.790	446	451	454	rBV3	627	806	0.08%	0.011%
5	2.871	472	476	480	rBV	234	248	0.02%	0.003%
6	2.928	491	494	500	rVB	275	254	0.03%	0.003%
7	2.957	500	503	506	rBV2	218	211	0.02%	0.003%
8	3.035	522	527	528	rBV2	889	632	0.06%	0.008%
9	3.144	558	561	563	rBV2	150	131	0.01%	0.002%
10	3.382	633	635	638	rBV2	208	141	0.01%	0.002%
11	3.498	667	671	677	rBV2	298	345	0.03%	0.005%
12	3.655	714	720	725	rVB2	401	432	0.04%	0.006%
13	3.687	725	730	737	rBV2	249	356	0.04%	0.005%
14	3.736	740	745	751	rVB2	232	266	0.03%	0.004%
15	3.797	760	764	766	rBV	329	283	0.03%	0.004%
16	3.887	788	792	794	rBV2	160	129	0.01%	0.002%
17	3.938	803	808	812	rVB2	297	287	0.03%	0.004%
18	3.967	812	817	822	rBV2	241	247	0.02%	0.003%
19	4.012	828	831	835	rBV	216	209	0.02%	0.003%
20	4.038	837	839	843	rVV2	170	127	0.01%	0.002%
21	4.160	870	877	881	rBV2	241	329	0.03%	0.004%
22	4.211	890	893	896	rVB	188	142	0.01%	0.002%
23	4.372	941	943	948	rVB2	249	233	0.02%	0.003%
24	4.398	948	951	954	rBV2	198	129	0.01%	0.002%
25	4.462	967	971	974	rBV2	209	161	0.02%	0.002%
26	4.626	1010	1022	1066	rBV	71367	190659	19.01%	2.528%
27	5.057	1141	1156	1178	rBV	179614	394431	39.33%	5.229%
28	5.218	1204	1206	1211	rVB3	434	312	0.03%	0.004%
29	5.289	1225	1228	1231	rVB2	239	163	0.02%	0.002%
30	5.504	1292	1295	1299	rBV2	209	166	0.02%	0.002%
31	5.559	1310	1312	1315	rVB2	241	133	0.01%	0.002%
32	5.629	1330	1334	1336	rBV	188	138	0.01%	0.002%
33	5.719	1341	1362	1381	rBV2	373285	1002756	100.00%	13.294%
34	6.025	1453	1457	1459	rBV2	170	139	0.01%	0.002%
35	6.096	1477	1479	1485	rBV	236	231	0.02%	0.003%
36	6.182	1501	1506	1509	rBV2	289	333	0.03%	0.004%

Data Path : Z:\voasrv\HPCHEM1\MSVOA_U\Data\VU043023\
 Data File : VU054001.D
 Acq On : 29 Apr 2023 21:10
 Operator : JC/MD
 Sample : 02565-11 50X
 Misc : 5.0mL/MSVOA_U/WATER
 ALS Vial : 23 Sample Multiplier: 1

Instrument :
 MSVOA_U
 ClientSampleId :
 COAY4

Integration Parameters: LSCINT.P

Integrator: RTE
 Smoothing : OFF
 Sampling : 1
 Start Thrs : 0.2
 Stop Thrs : 0

Filtering: 5
 Min Area: 0 % of largest Peak
 Max Peaks: 100
 Peak Location: TOP

If leading or trailing edge < 100 prefer < Baseline drop else tangent >
 Peak separation: 5

Method : Z:\voasrv\HPCHEM1\MSVOA_U\Method\SFAMULM042923WMA.M
 Title : VOC Analysis

37	6.243	1512	1525	1554	rVV	332448	640369	63.86%	8.490%
38	6.440	1584	1586	1594	rVB	620	355	0.04%	0.005%
39	6.520	1605	1611	1620	rBV5	2176	3792	0.38%	0.050%
40	6.591	1629	1633	1639	rBV3	368	487	0.05%	0.006%
41	6.684	1646	1662	1682	rBV	230515	452111	45.09%	5.994%
42	6.989	1755	1757	1761	rVB2	221	127	0.01%	0.002%
43	7.018	1761	1766	1769	rBV2	181	213	0.02%	0.003%
44	7.041	1769	1773	1777	rVB	162	124	0.01%	0.002%
45	7.141	1801	1804	1808	rBV	268	272	0.03%	0.004%
46	7.266	1837	1843	1847	rBV2	267	333	0.03%	0.004%
47	7.288	1847	1850	1853	rBV	243	189	0.02%	0.003%
48	7.562	1923	1935	1959	rBV	123755	224434	22.38%	2.975%
49	7.774	1998	2001	2006	rVB2	166	171	0.02%	0.002%
50	7.893	2025	2038	2058	rBV	456632	800344	79.81%	10.610%
51	8.083	2094	2097	2098	rBV	249	162	0.02%	0.002%
52	8.176	2114	2126	2146	rBV	88831	150352	14.99%	1.993%
53	8.359	2181	2183	2186	rBV2	174	130	0.01%	0.002%
54	8.407	2196	2198	2202	rVB2	179	139	0.01%	0.002%
55	8.436	2202	2207	2214	rBV2	242	389	0.04%	0.005%
56	8.472	2215	2218	2221	rVB	325	238	0.02%	0.003%
57	8.555	2233	2244	2251	rBV6	1940	3104	0.31%	0.041%
58	8.629	2256	2267	2301	rBV	223629	418259	41.71%	5.545%
59	8.793	2316	2318	2324	rVB3	310	179	0.02%	0.002%
60	8.935	2357	2362	2364	rBV2	303	260	0.03%	0.003%
61	9.009	2382	2385	2387	rBV2	176	125	0.01%	0.002%
62	9.047	2393	2397	2403	rBV2	256	347	0.03%	0.005%
63	9.115	2413	2418	2421	rBV	246	273	0.03%	0.004%
64	9.176	2435	2437	2444	rBV2	188	229	0.02%	0.003%
65	9.259	2460	2463	2469	rVB2	240	206	0.02%	0.003%
66	9.288	2469	2472	2474	rBV	272	176	0.02%	0.002%
67	9.321	2478	2482	2484	rBV	301	257	0.03%	0.003%
68	9.414	2497	2511	2538	rBV	442757	740996	73.90%	9.824%
69	9.729	2605	2609	2614	rVB	330	260	0.03%	0.003%
70	9.774	2621	2623	2627	rVB2	267	183	0.02%	0.002%
71	9.803	2627	2632	2634	rBV	269	189	0.02%	0.003%
72	9.874	2651	2654	2655	rVV	271	161	0.02%	0.002%
73	9.899	2659	2662	2665	rBV	166	135	0.01%	0.002%
74	9.980	2683	2687	2690	rBV2	258	192	0.02%	0.003%
75	10.063	2710	2713	2717	rVB2	342	292	0.03%	0.004%
76	10.108	2724	2727	2732	rBV3	269	277	0.03%	0.004%

Data Path : Z:\voasrv\HPCHEM1\MSVOA_U\Data\VU043023\
 Data File : VU054001.D
 Acq On : 29 Apr 2023 21:10
 Operator : JC/MD
 Sample : 02565-11 50X
 Misc : 5.0mL/MSVOA_U/WATER
 ALS Vial : 23 Sample Multiplier: 1

Instrument :
 MSVOA_U
 ClientSampleId :
 C0AY4

Integration Parameters: LSCINT.P

Integrator: RTE
 Smoothing : OFF Filtering: 5
 Sampling : 1 Min Area: 0 % of largest Peak
 Start Thrs: 0.2 Max Peaks: 100
 Stop Thrs : 0 Peak Location: TOP

If leading or trailing edge < 100 prefer < Baseline drop else tangent >
 Peak separation: 5

Method : Z:\voasrv\HPCHEM1\MSVOA_U\Method\SFAMULM042923WMA.M
 Title : VOC Analysis

77	10.176	2745	2748	2751	rBV	279	247	0.02%	0.003%
78	10.317	2789	2792	2801	rVB2	304	477	0.05%	0.006%
79	10.372	2807	2809	2814	rVB2	154	141	0.01%	0.002%
80	10.439	2827	2830	2831	rBV	199	136	0.01%	0.002%
81	10.574	2869	2872	2876	rBV2	271	238	0.02%	0.003%
82	10.671	2898	2902	2905	rBV2	247	222	0.02%	0.003%
83	10.751	2915	2927	2945	rBV	285079	466572	46.53%	6.186%
84	10.890	2966	2970	2972	rBV	340	219	0.02%	0.003%
85	10.951	2985	2989	2991	rBV2	223	150	0.01%	0.002%
86	11.037	3012	3016	3018	rBV	224	179	0.02%	0.002%
87	11.221	3068	3073	3076	rBV2	304	308	0.03%	0.004%
88	11.275	3086	3090	3093	rBV2	242	239	0.02%	0.003%
89	11.401	3122	3129	3134	rBV2	386	540	0.05%	0.007%
90	11.607	3190	3193	3196	rBV	158	149	0.01%	0.002%
91	11.806	3243	3255	3278	rBV	455404	714190	71.22%	9.468%
92	12.012	3314	3319	3321	rBV2	352	295	0.03%	0.004%
93	12.079	3333	3340	3345	rBV2	371	511	0.05%	0.007%
94	12.189	3361	3374	3397	rBV	439780	708263	70.63%	9.390%
95	12.455	3453	3457	3458	rBV2	223	138	0.01%	0.002%
96	12.562	3487	3490	3493	rBV	249	156	0.02%	0.002%
97	12.960	3611	3614	3615	rBV	254	143	0.01%	0.002%
98	13.237	3695	3700	3703	rBV3	660	650	0.06%	0.009%
99	13.590	3808	3810	3813	rBV2	275	206	0.02%	0.003%
100	13.700	3841	3844	3845	rBV2	306	165	0.02%	0.002%

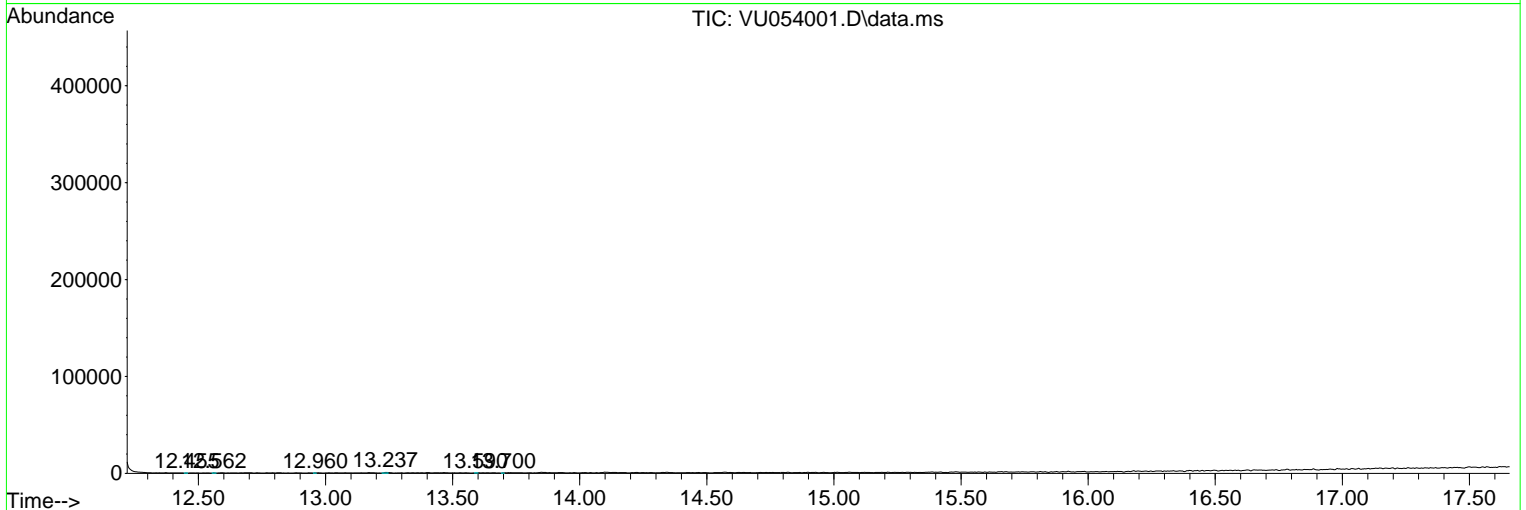
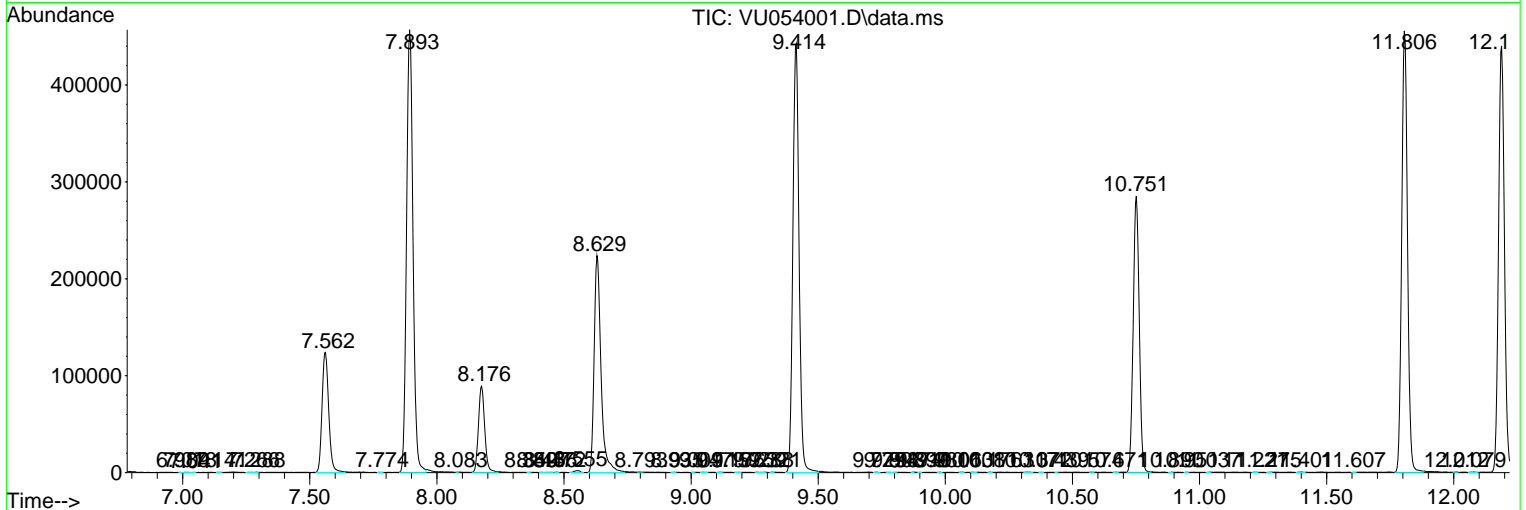
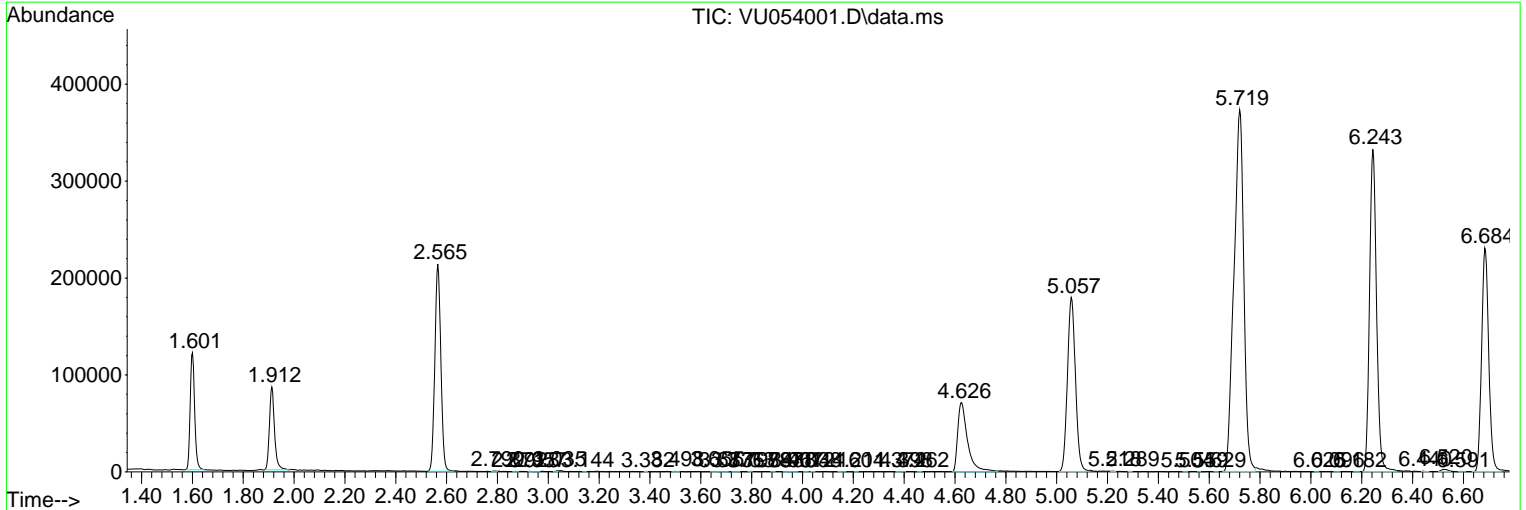
Sum of corrected areas: 7542993

Data Path : Z:\voasrv\HPCHEM1\MSVOA_U\Data\VU043023\
 Data File : VU054001.D
 Acq On : 29 Apr 2023 21:10
 Operator : JC/MD
 Sample : 02565-11 50X
 Misc : 5.0mL/MSVOA_U/WATER
 ALS Vial : 23 Sample Multiplier: 1

Instrument :
 MSVOA_U
 ClientSampleId :
 C0AY4

Quant Method : Z:\voasrv\HPCHEM1\MSVOA_U\Method\SFAMULM042923WMA.M
 Quant Title : VOC Analysis

TIC Library : C:\Database\NIST20.L
 TIC Integration Parameters: LSCINT.P



Library Search Compound Report

Data Path : Z:\voasrv\HPCHEM1\MSVOA_U\Data\VU043023\
Data File : VU054001.D
Acq On : 29 Apr 2023 21:10
Operator : JC/MD
Sample : 02565-11 50X
Misc : 5.0mL/MSVOA_U/WATER
ALS Vial : 23 Sample Multiplier: 1

Instrument :
MSVOA_U
ClientSampleId :
C0AY4

Quant Method : Z:\voasrv\HPCHEM1\MSVOA_U\Method\SFAMULM042923WMA.M
Quant Title : VOC Analysis

TIC Library : C:\Database\NIST20.L
TIC Integration Parameters: LSCINT.P

No Library Search Compounds Detected

Data Path : Z:\voasrv\HPCHEM1\MSVOA_U\Data\VU043023\
Data File : VU054001.D
Acq On : 29 Apr 2023 21:10
Operator : JC/MD
Sample : 02565-11 50X
Misc : 5.0mL/MSVOA_U/WATER
ALS Vial : 23 Sample Multiplier: 1

Instrument :
MSVOA_U
ClientSampleId :
C0AY4

Quant Method : Z:\voasrv\HPCHEM1\MSVOA_U\Method\SFAMULM042923WMA.M
Quant Title : VOC Analysis

TIC Library : C:\Database\NIST0.L
TIC Integration Parameters: LSCINT.P

TIC Top Hit name	RT	EstConc	Units	Response	--Internal Standard--			
					#	RT	Resp	Conc
