

Data File : VU023553.D  
 Acq On : 01 May 2018 15:00  
 Operator : MD/SY  
 Sample : J2558-14  
 Misc : 5.0mL/MSVOA\_U/WATER  
 ALS Vial : 10 Sample Multiplier: 1

Quant Time: May 02 03:13:59 2018  
 Quant Method : W:\HPCHEM1\MSVOA\_U\METHOD\SOMULM050118WMA.M  
 Quant Title : VOC Analysis  
 QLast Update : Wed May 02 03:12:05 2018  
 Response via : Initial Calibration

Internal Standards	R.T.	QIon	Response	Conc	Units	Dev(Min)
1) 1,4-Difluorobenzene	5.89	114	357014	50.00	ug/L	0.00
28) Chlorobenzene-d5	9.09	117	337570	50.00	ug/L	0.00
60) 1,4-Dichlorobenzene-d4	11.49	152	163824	50.00	ug/L	0.00

System Monitoring Compounds

4) Vinyl Chloride-d3	1.40	65	112439	44.44	ug/L	0.00
Spiked Amount	50.000	Range	60 - 135	Recovery	=	88.88%
7) Chloroethane-d5	1.68	69	86432	44.81	ug/L	0.00
Spiked Amount	50.000	Range	70 - 130	Recovery	=	89.62%
11) 1,1-Dichloroethene-d2	2.27	63	162405	32.92	ug/L	0.00
Spiked Amount	50.000	Range	60 - 125	Recovery	=	65.84%
21) 2-Butanone-d5	4.18	46	162162	92.76	ug/L	0.00
Spiked Amount	100.000	Range	40 - 130	Recovery	=	92.76%
24) Chloroform-d	4.65	84	156898	37.49	ug/L	0.00
Spiked Amount	50.000	Range	70 - 125	Recovery	=	74.98%
26) 1,2-Dichloroethane-d4	5.31	65	133447	45.85	ug/L	0.00
Spiked Amount	50.000	Range	70 - 125	Recovery	=	91.70%
32) Benzene-d6	5.35	84	418334	46.19	ug/L	0.00
Spiked Amount	50.000	Range	70 - 125	Recovery	=	92.38%
36) 1,2-Dichloropropane-d6	6.33	67	146447	48.27	ug/L	0.00
Spiked Amount	50.000	Range	70 - 120	Recovery	=	96.54%
41) Toluene-d8	7.57	98	387797	46.44	ug/L	0.00
Spiked Amount	50.000	Range	80 - 120	Recovery	=	92.88%
43) trans-1,3-Dichloropropene-	7.85	79	59544	45.59	ug/L	0.00
Spiked Amount	50.000	Range	60 - 125	Recovery	=	91.18%
47) 2-Hexanone-d5	8.31	63	109284	94.86	ug/L	0.00
Spiked Amount	100.000	Range	45 - 130	Recovery	=	94.86%
57) 1,1,2,2-Tetrachloroethane-	10.44	84	177922	45.34	ug/L	0.00
Spiked Amount	50.000	Range	65 - 120	Recovery	=	90.68%
64) 1,2-Dichlorobenzene-d4	11.87	152	153790	48.12	ug/L	0.00
Spiked Amount	50.000	Range	80 - 120	Recovery	=	96.24%

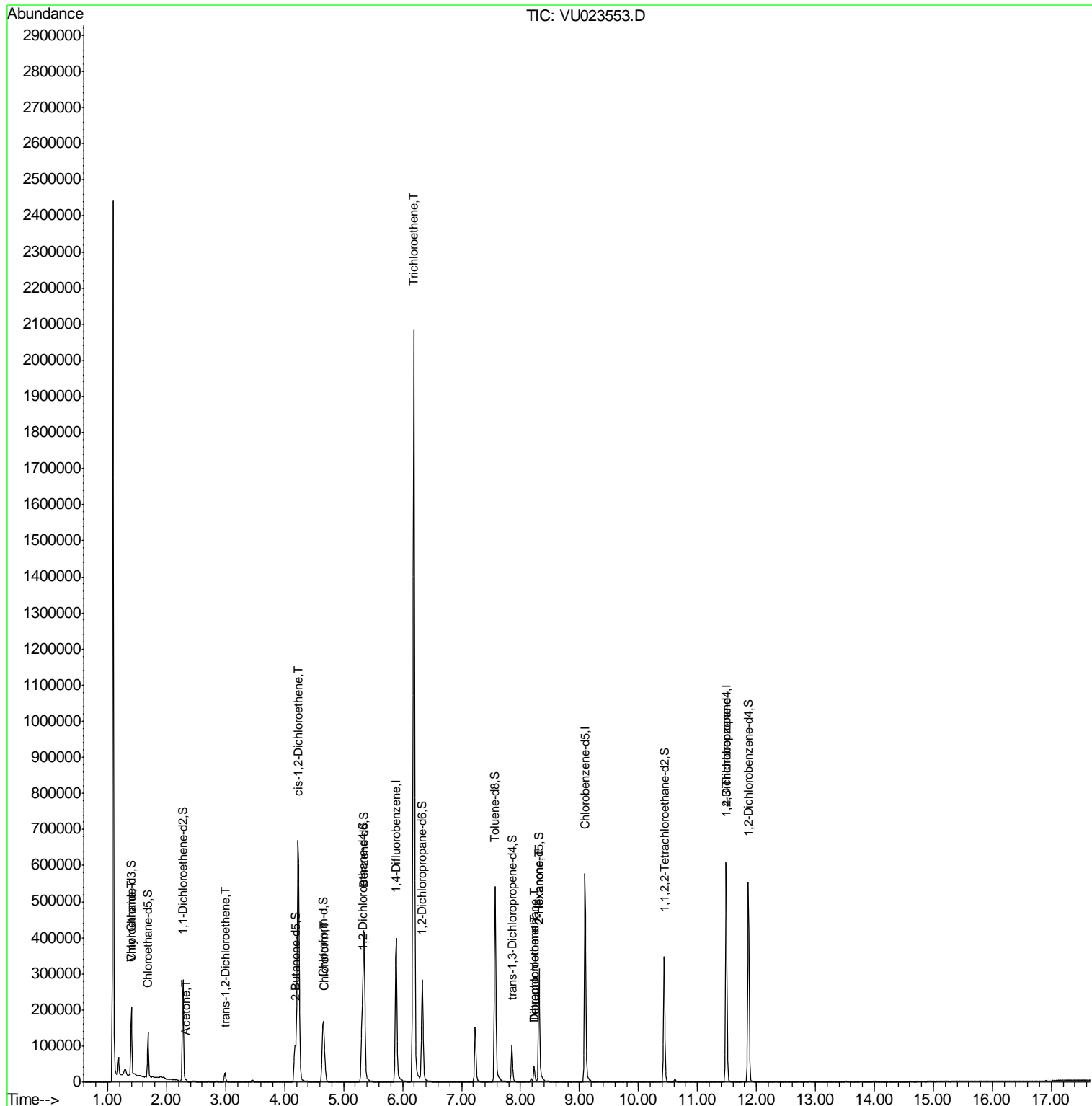
Target Compounds

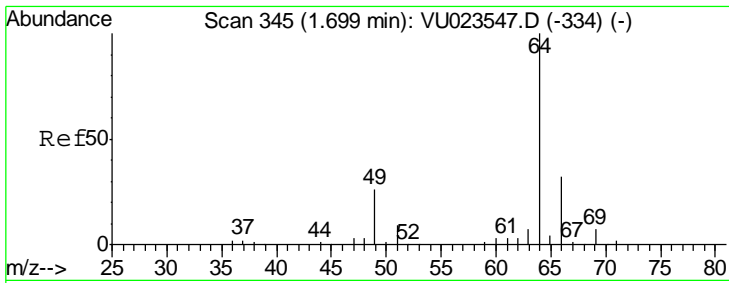
Target Compounds	R.T.	QIon	Response	Conc	Units	Qvalue
8) Chloroethane	1.40	64	4521	1.91	ug/L	92
13) Acetone	2.32	43	4585	1.77	ug/L	100
17) trans-1,2-Dichloroethene	2.99	96	10243	3.59	ug/L	98
20) cis-1,2-Dichloroethene	4.23	96	371284	117.34	ug/L	99
25) Chloroform	4.68	83	42686	7.36	ug/L	99
34) Trichloroethene	6.19	95	750053	246.09	ug/L	98
46) Tetrachloroethene	8.23	164	10614	4.27	ug/L	98
48) 2-Hexanone	8.31	43	12947	3.57	ug/L #	68
49) Dibromochloromethane	8.23	129	9856	3.23	ug/L #	11
59) 1,2,3-Trichloropropane	11.49	75	19308	5.13	ug/L	93

(#) = qualifier out of range (m) = manual integration (+) = signals summed

Data File : VU023553.D  
Acq On : 01 May 2018 15:00  
Operator : MD/SY  
Sample : J2558-14  
Misc : 5.0mL/MSVOA\_U/WATER  
ALS Vial : 10 Sample Multiplier: 1

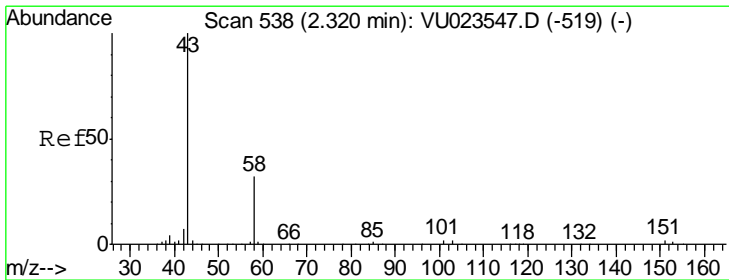
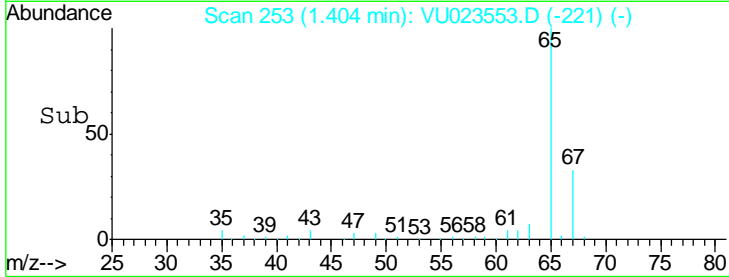
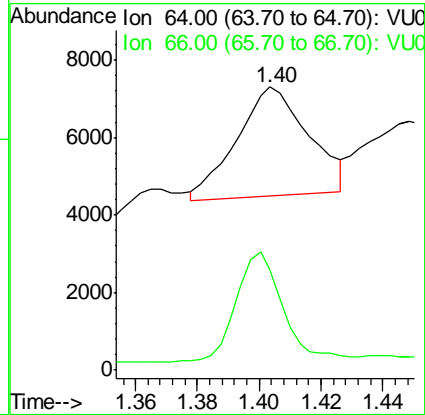
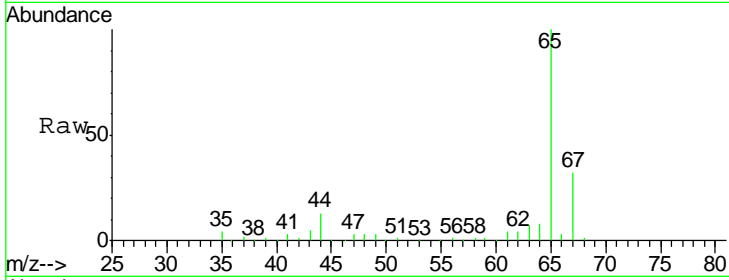
Quant Time: May 02 03:13:59 2018  
Quant Method : W:\HPCHEM1\MSVOA\_U\METHOD\SOMULM050118WMA.M  
Quant Title : VOC Analysis  
QLast Update : Wed May 02 03:12:05 2018  
Response via : Initial Calibration





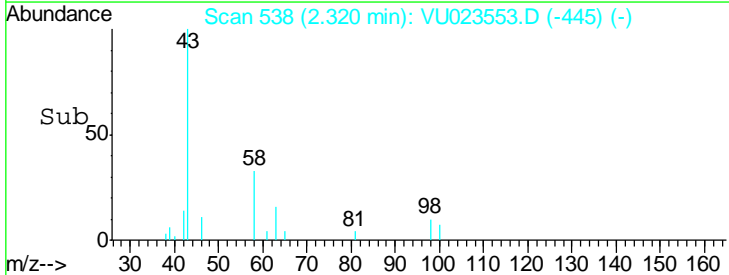
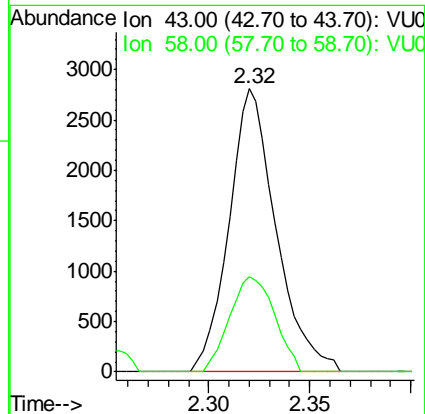
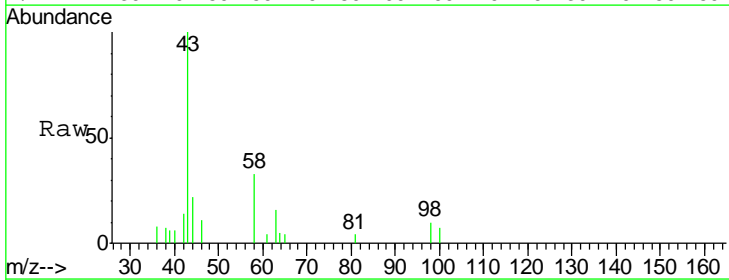
#8  
 Chloroethane  
 Concen: 1.91 ug/L  
 RT: 1.40 min Scan# 253  
 Delta R.T. -0.30 min  
 Lab File: VU023553.D  
 Acq: 01 May 2018 15:00

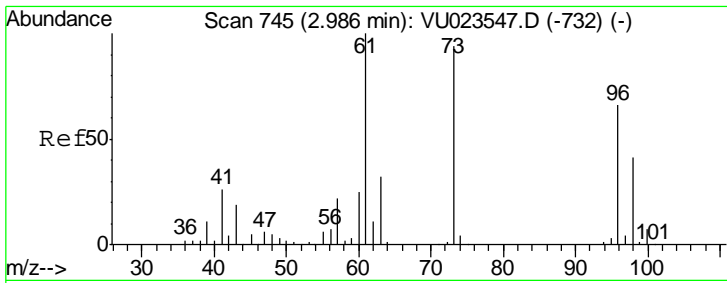
Tgt Ion	Resp	Lower	Upper
64	100		
66	35.6	21.7	40.3



#13  
 Acetone  
 Concen: 1.77 ug/L  
 RT: 2.32 min Scan# 538  
 Delta R.T. -0.00 min  
 Lab File: VU023553.D  
 Acq: 01 May 2018 15:00

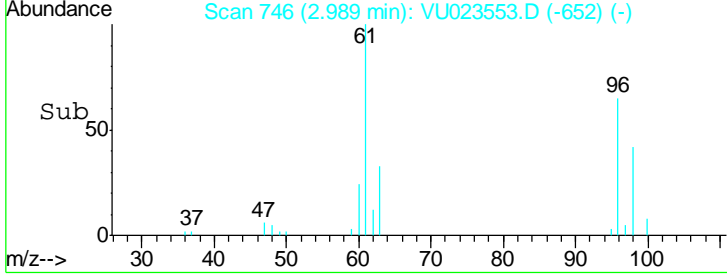
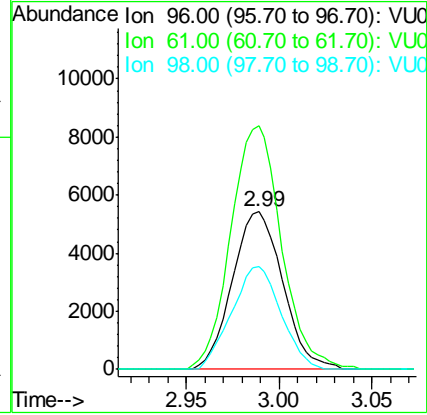
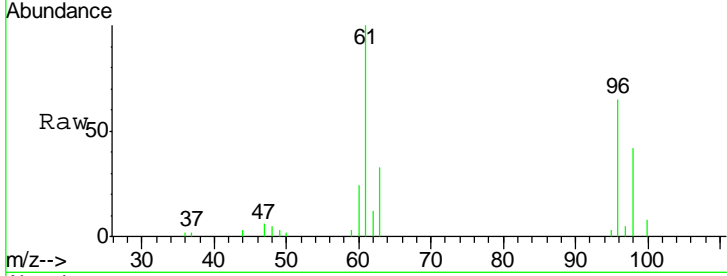
Tgt Ion	Resp	Lower	Upper
43	100		
58	32.2	0.0	64.8





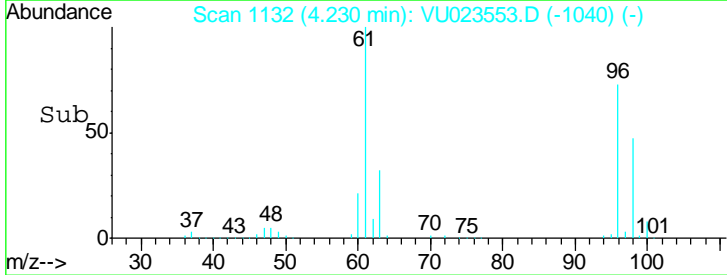
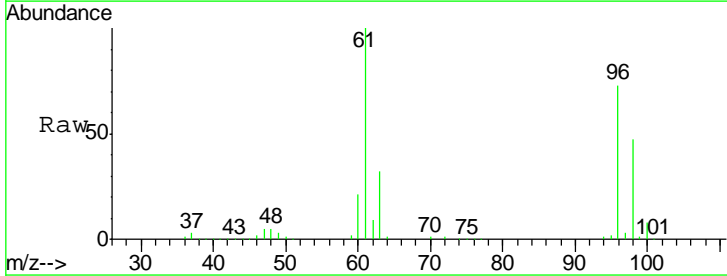
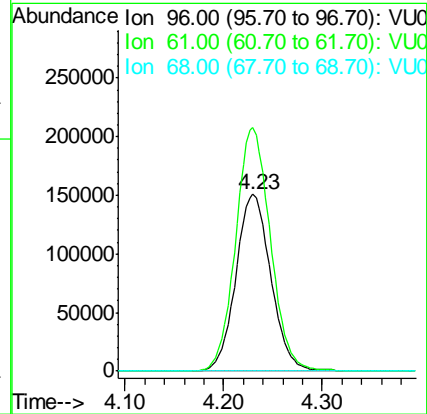
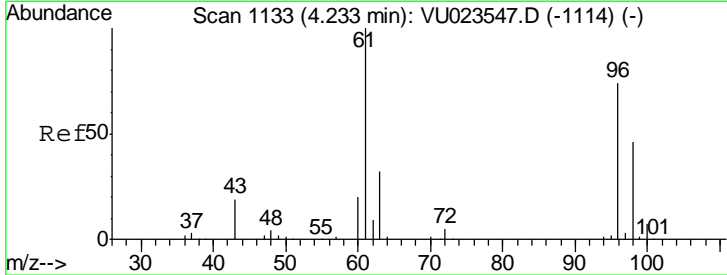
#17  
 trans-1,2-Dichloroethene  
 Concen: 3.59 ug/L  
 RT: 2.99 min Scan# 746  
 Delta R.T. 0.00 min  
 Lab File: VU023553.D  
 Acq: 01 May 2018 15:00

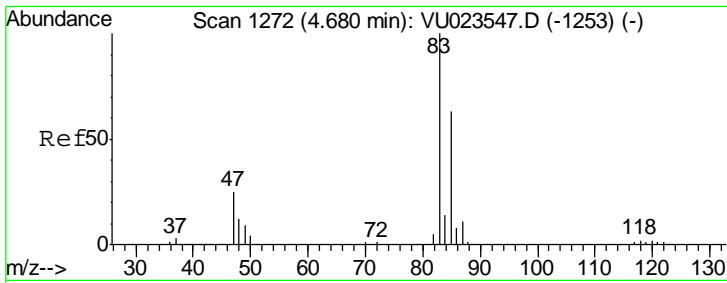
Tgt Ion	Resp	Lower	Upper
96	10243		
61	154.4	106.9	198.5
98	65.5	44.2	82.2



#20  
 cis-1,2-Dichloroethene  
 Concen: 117.34 ug/L  
 RT: 4.23 min Scan# 1132  
 Delta R.T. -0.00 min  
 Lab File: VU023553.D  
 Acq: 01 May 2018 15:00

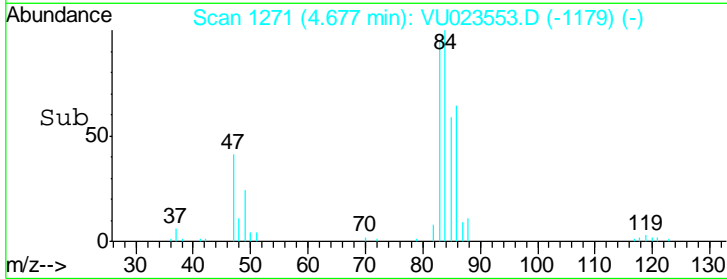
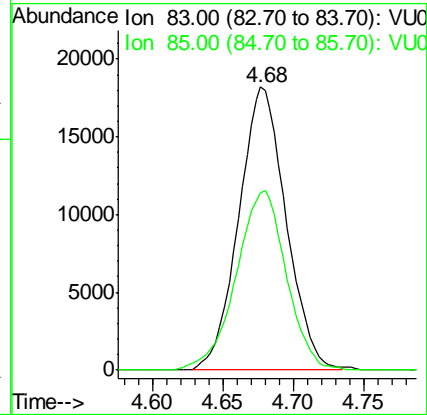
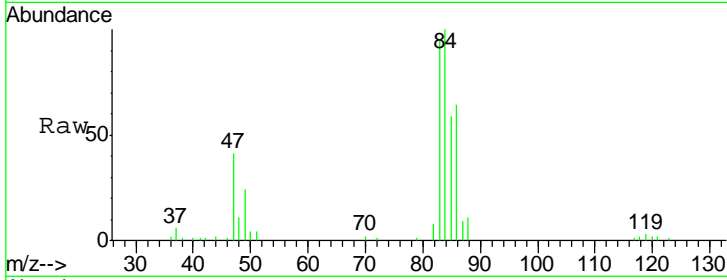
Tgt Ion	Resp	Lower	Upper
96	371284		
61	137.7	95.3	177.1
68	0.0	0.0	0.0





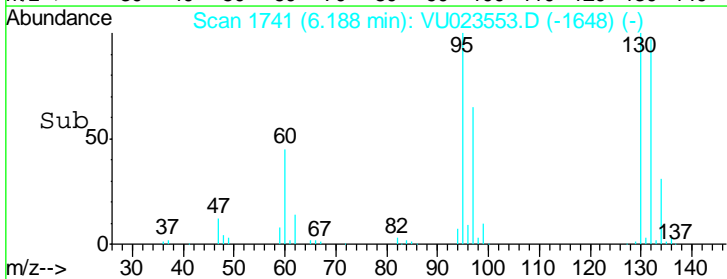
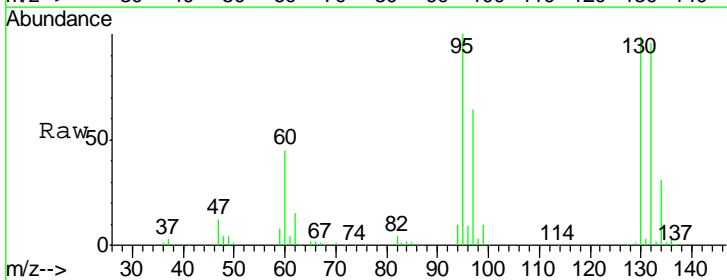
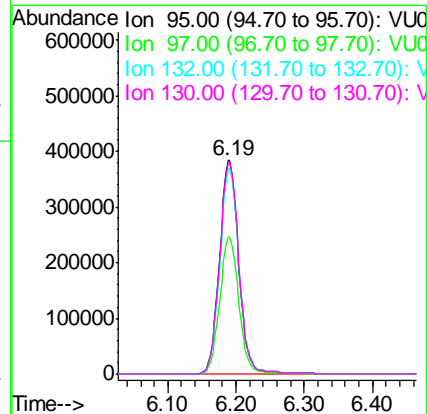
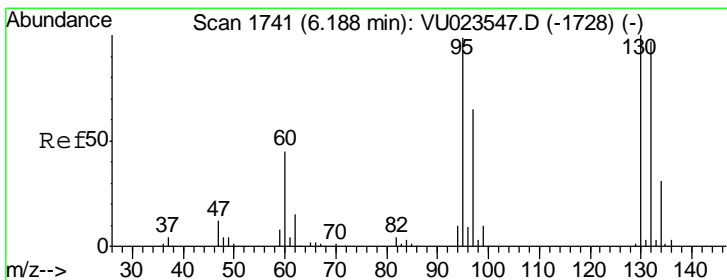
#25  
 Chloroform  
 Concen: 7.36 ug/L  
 RT: 4.68 min Scan# 1271  
 Delta R.T. -0.00 min  
 Lab File: VU023553.D  
 Acq: 01 May 2018 15:00

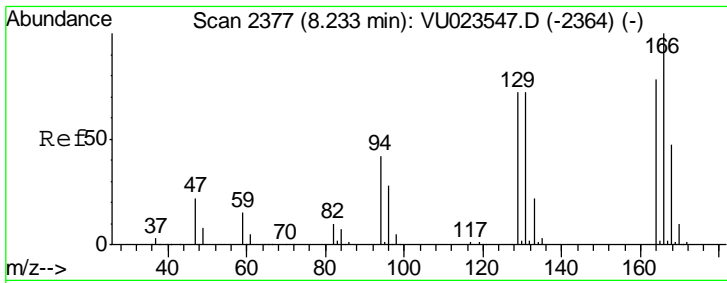
Tgt Ion	Resp	Lower	Upper
83	42686		
83	100		
85	62.6	44.4	82.5



#34  
 Trichloroethene  
 Concen: 246.09 ug/L  
 RT: 6.19 min Scan# 1741  
 Delta R.T. -0.00 min  
 Lab File: VU023553.D  
 Acq: 01 May 2018 15:00

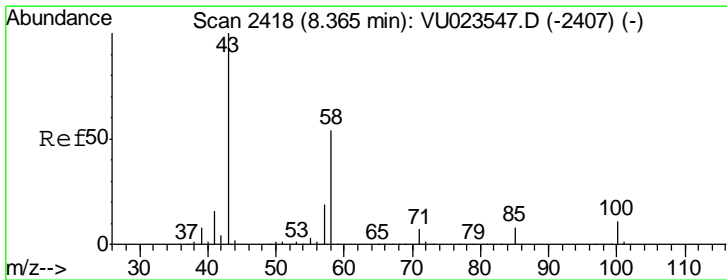
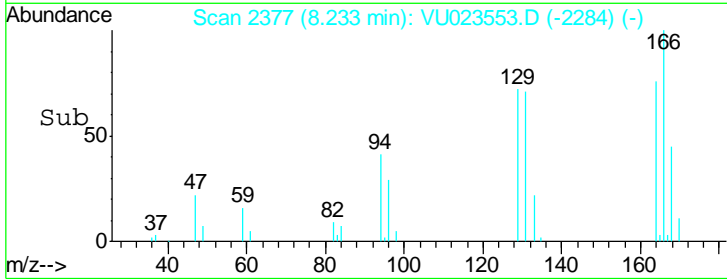
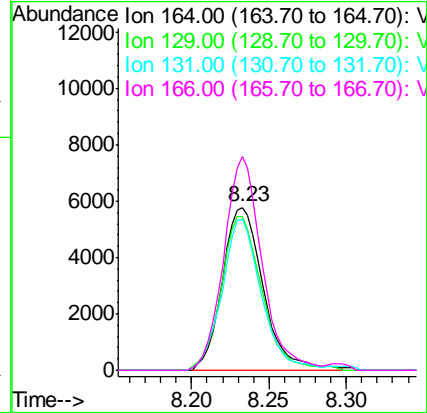
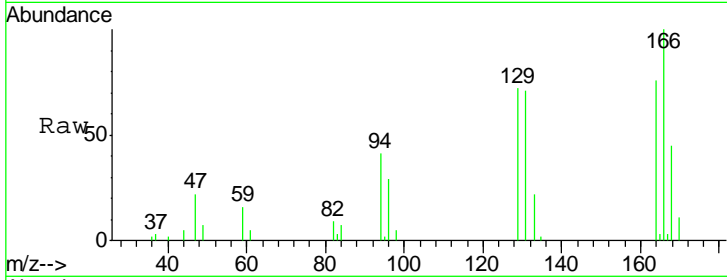
Tgt Ion	Resp	Lower	Upper
95	750053		
95	100		
97	64.2	46.3	85.9
132	95.8	68.5	127.1
130	99.0	70.8	131.4





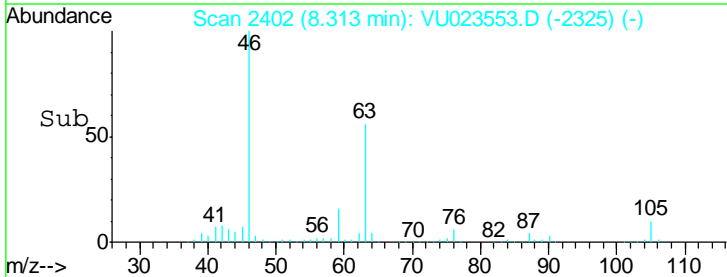
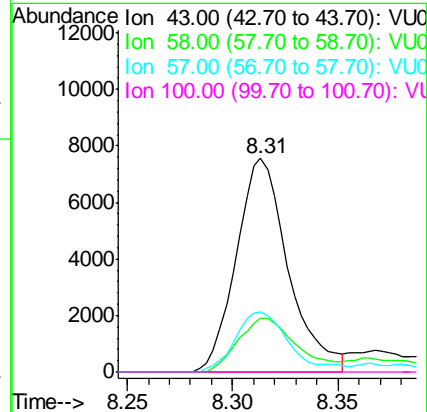
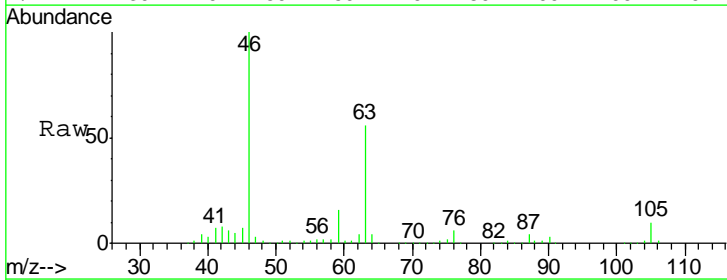
#46  
 Tetrachloroethene  
 Concen: 4.27 ug/L  
 RT: 8.23 min Scan# 2377  
 Delta R.T. -0.00 min  
 Lab File: VU023553.D  
 Acq: 01 May 2018 15:00

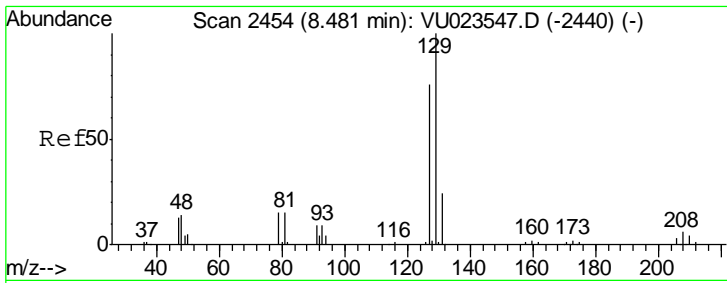
Tgt Ion	Resp	Lower	Upper
164	10614		
164	100		
129	94.1	64.2	119.2
131	92.5	64.1	119.1
166	131.0	89.4	166.0



#48  
 2-Hexanone  
 Concen: 3.57 ug/L  
 RT: 8.31 min Scan# 2402  
 Delta R.T. -0.05 min  
 Lab File: VU023553.D  
 Acq: 01 May 2018 15:00

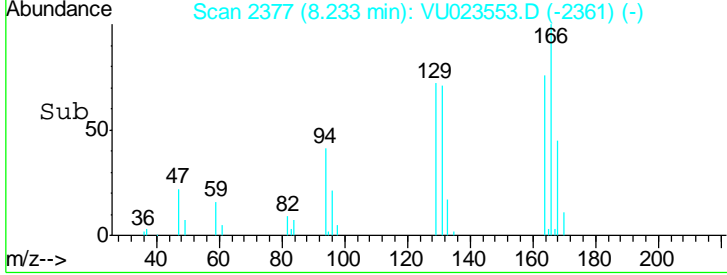
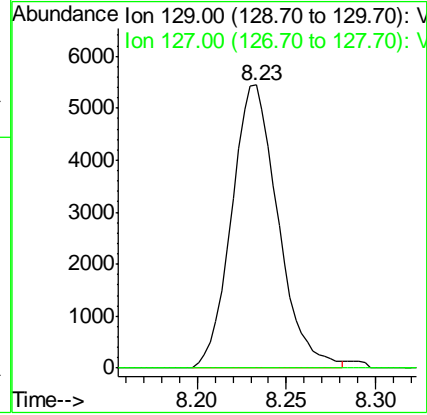
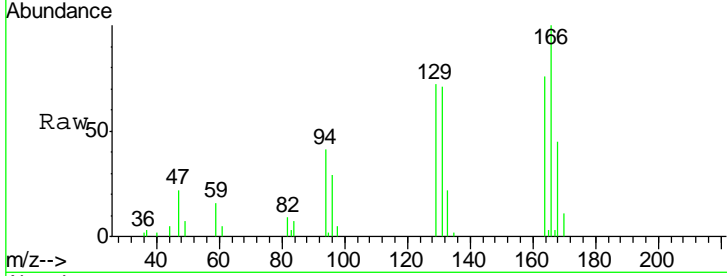
Tgt Ion	Resp	Lower	Upper
43	12947		
43	100		
58	27.9	43.0	64.6#
57	27.8	14.6	22.0#
100	0.0	8.4	12.6#





#49  
 Dibromochloromethane  
 Concen: 3.23 ug/L  
 RT: 8.23 min Scan# 2377  
 Delta R.T. -0.25 min  
 Lab File: VU023553.D  
 Acq: 01 May 2018 15:00

Tgt Ion	Resp	Lower	Upper
129	9856		
127	0.0	53.3	99.1#



#59  
 1,2,3-Trichloropropane  
 Concen: 5.13 ug/L  
 RT: 11.49 min Scan# 3389  
 Delta R.T. 0.99 min  
 Lab File: VU023553.D  
 Acq: 01 May 2018 15:00

Tgt Ion	Resp	Lower	Upper
75	19308		
77	36.3	25.9	38.9

