

Data Path : Z:\voasrv\HPCHEM1\MSVOA_U\Data\VU050322\
 Data File : VU048388.D
 Acq On : 03 May 2022 13:54
 Operator : SY/MD
 Sample : N2603-10ME
 Misc : 7.46g/5.0mL/100uL/5.0mL/MSVOA_U/MEOH
 ALS Vial : 9 Sample Multiplier: 1

Instrument :
 MSVOA_U
 ClientSampleId :
 EW491ME

Integration Parameters: LSCINT.P

Integrator: RTE
 Smoothing : OFF Filtering: 5
 Sampling : 1 Min Area: 0 % of largest Peak
 Start Thrs: 0.2 Max Peaks: 100
 Stop Thrs : 0 Peak Location: TOP

If leading or trailing edge < 100 prefer < Baseline drop else tangent >
 Peak separation: 5

Method : Z:\voasrv\HPCHEM1\MSVOA_U\Method\SFAMULM042522WMA.M
 Title : VOC Analysis

Signal : TIC: VU048388.D\data.ms

peak #	R.T. min	first scan	max scan	last scan	PK TY	peak height	corr. area	corr. % max.	% of total
1	1.481	35	44	51	rBV3	11491	22553	1.43%	0.169%
2	1.600	74	81	114	rVB	64972	191279	12.15%	1.431%
3	1.854	120	160	161	rBV6	42210	155460	9.87%	1.163%
4	2.533	360	371	385	rBV	216114	384667	24.43%	2.878%
5	3.179	560	572	599	rVB	28339	68336	4.34%	0.511%
6	4.636	1012	1025	1046	rBV	133110	430990	27.37%	3.224%
7	5.063	1142	1158	1182	rBV	264016	621976	39.49%	4.653%
8	5.719	1342	1362	1399	rVB2	616552	1574842	100.00%	11.782%
9	5.976	1432	1442	1461	rBV3	14538	34431	2.19%	0.258%
10	6.247	1512	1526	1553	rBV	518384	1047063	66.49%	7.833%
11	6.523	1605	1612	1623	rVB7	4987	9150	0.58%	0.068%
12	6.600	1630	1636	1646	rVB3	4639	8124	0.52%	0.061%
13	6.690	1650	1664	1692	rVB	350567	729072	46.29%	5.454%
14	7.195	1811	1821	1826	rBV4	8199	16773	1.07%	0.125%
15	7.568	1924	1937	1958	rBV	178081	355975	22.60%	2.663%
16	7.790	1999	2006	2014	rBV4	4456	7308	0.46%	0.055%
17	7.896	2026	2039	2056	rBV	678507	1259011	79.95%	9.419%
18	8.182	2116	2128	2153	rBV	114112	244758	15.54%	1.831%
19	8.343	2175	2178	2179	rBV	1158	731	0.05%	0.005%
20	8.658	2259	2276	2307	rBV	462568	1064291	67.58%	7.962%
21	8.918	2352	2357	2369	rBV5	1884	2886	0.18%	0.022%
22	9.423	2499	2514	2534	rBV	689066	1360640	86.40%	10.179%
23	9.578	2557	2562	2573	rVB4	1185	1746	0.11%	0.013%
24	9.690	2591	2597	2599	rBV3	1394	1361	0.09%	0.010%
25	10.105	2723	2726	2741	rVB4	1097	1985	0.13%	0.015%
26	10.391	2811	2815	2818	rVB	694	562	0.04%	0.004%
27	10.417	2818	2823	2827	rBV2	760	827	0.05%	0.006%
28	10.491	2841	2846	2850	rBV3	869	896	0.06%	0.007%
29	10.671	2896	2902	2911	rVB3	2393	3705	0.24%	0.028%
30	10.764	2918	2931	2958	rVB	637572	1040192	66.05%	7.782%
31	10.864	2958	2962	2966	rBV4	642	634	0.04%	0.005%
32	10.992	2999	3002	3006	rBV3	591	516	0.03%	0.004%
33	11.114	3029	3040	3052	rVB7	5972	10274	0.65%	0.077%
34	11.237	3074	3078	3085	rVB2	567	663	0.04%	0.005%
35	11.298	3093	3097	3102	rBV2	451	534	0.03%	0.004%
36	11.365	3113	3118	3120	rBV	532	401	0.03%	0.003%

Data Path : Z:\voasrv\HPCHEM1\MSVOA_U\Data\VU050322\
 Data File : VU048388.D
 Acq On : 03 May 2022 13:54
 Operator : SY/MD
 Sample : N2603-10ME
 Misc : 7.46g/5.0mL/100uL/5.0mL/MSVOA_U/MEOH
 ALS Vial : 9 Sample Multiplier: 1

Instrument :
 MSVOA_U
 ClientSampleId :
 EW491ME

Integration Parameters: LSCINT.P

Integrator: RTE
 Smoothing : OFF Filtering: 5
 Sampling : 1 Min Area: 0 % of largest Peak
 Start Thrs: 0.2 Max Peaks: 100
 Stop Thrs : 0 Peak Location: TOP

If leading or trailing edge < 100 prefer < Baseline drop else tangent >
 Peak separation: 5

Method : Z:\voasrv\HPCHEM1\MSVOA_U\Method\SFAMULM042522WMA.M
 Title : VOC Analysis

37	11.417	3125	3134	3138	rVV5	1507	1661	0.11%	0.012%
38	11.471	3138	3151	3161	rVB6	2332	5404	0.34%	0.040%
39	11.632	3195	3201	3205	rBV2	346	403	0.03%	0.003%
40	11.696	3216	3221	3229	rVB4	1246	1728	0.11%	0.013%
41	11.751	3234	3238	3245	rVB3	554	530	0.03%	0.004%
42	11.815	3245	3258	3278	rBV	840971	1342790	85.27%	10.046%
43	11.970	3301	3306	3308	rBV3	676	656	0.04%	0.005%
44	12.198	3357	3377	3398	rBV	779543	1254552	79.66%	9.386%
45	12.269	3398	3399	3405	rVB3	588	501	0.03%	0.004%
46	12.330	3412	3418	3431	rVB5	4059	6279	0.40%	0.047%
47	12.532	3478	3481	3484	rVV3	562	457	0.03%	0.003%
48	12.667	3516	3523	3525	rVB5	432	556	0.04%	0.004%
49	12.770	3548	3555	3564	rVB5	1136	1918	0.12%	0.014%
50	12.905	3592	3597	3600	rVB3	621	565	0.04%	0.004%
51	13.040	3636	3639	3646	rVB5	649	799	0.05%	0.006%
52	13.137	3660	3669	3674	rBV6	1208	1591	0.10%	0.012%
53	13.156	3674	3675	3680	rVB3	665	406	0.03%	0.003%
54	13.201	3680	3689	3691	rBV2	522	546	0.03%	0.004%
55	13.237	3695	3700	3702	rBV2	626	495	0.03%	0.004%
56	13.349	3732	3735	3738	rBV	509	412	0.03%	0.003%
57	13.368	3738	3741	3746	rVB2	647	625	0.04%	0.005%
58	13.433	3751	3761	3770	rBV2	8920	12979	0.82%	0.097%
59	13.587	3799	3809	3817	rBV4	4791	7070	0.45%	0.053%
60	13.648	3824	3828	3831	rBV2	476	456	0.03%	0.003%
61	13.973	3925	3929	3931	rBV3	802	576	0.04%	0.004%
62	14.002	3934	3938	3945	rVB5	1823	2155	0.14%	0.016%
63	14.047	3945	3952	3957	rBV6	1332	1869	0.12%	0.014%
64	14.095	3961	3967	3975	rBV5	2625	4095	0.26%	0.031%
65	14.192	3984	3997	4005	rBV8	3767	6878	0.44%	0.051%
66	14.272	4015	4022	4026	rVV5	1352	1372	0.09%	0.010%
67	14.310	4031	4034	4037	rVB3	823	546	0.03%	0.004%
68	14.336	4037	4042	4044	rBV	998	954	0.06%	0.007%
69	14.391	4057	4059	4062	rVB4	792	438	0.03%	0.003%
70	14.417	4062	4067	4069	rBV3	538	475	0.03%	0.004%
71	14.452	4069	4078	4089	rVB2	12063	16887	1.07%	0.126%
72	14.497	4089	4092	4094	rBV2	960	564	0.04%	0.004%
73	14.516	4096	4098	4101	rVV2	1166	980	0.06%	0.007%
74	14.532	4101	4103	4108	rVV4	1428	1085	0.07%	0.008%
75	14.577	4108	4117	4124	rVV9	2381	4615	0.29%	0.035%
76	14.648	4132	4139	4146	rVV7	1519	2591	0.16%	0.019%

Data Path : Z:\voasrv\HPCHEM1\MSVOA_U\Data\VU050322\
 Data File : VU048388.D
 Acq On : 03 May 2022 13:54
 Operator : SY/MD
 Sample : N2603-10ME
 Misc : 7.46g/5.0mL/100uL/5.0mL/MSVOA_U/MEOH
 ALS Vial : 9 Sample Multiplier: 1

Instrument :
 MSVOA_U
 ClientSampleId :
 EW491ME

Integration Parameters: LSCINT.P

Integrator: RTE
 Smoothing : OFF
 Sampling : 1
 Start Thrs : 0.2
 Stop Thrs : 0

Filtering: 5
 Min Area: 0 % of largest Peak
 Max Peaks: 100
 Peak Location: TOP

If leading or trailing edge < 100 prefer < Baseline drop else tangent >
 Peak separation: 5

Method : Z:\voasrv\HPCHEM1\MSVOA_U\Method\SFAMULM042522WMA.M
 Title : VOC Analysis

77	14.677	4146	4148	4152	rVV4	1066	727	0.05%	0.005%
78	14.815	4187	4191	4192	rBV2	729	478	0.03%	0.004%
79	14.905	4216	4219	4223	rBV5	713	645	0.04%	0.005%
80	15.015	4248	4253	4254	rBV3	732	630	0.04%	0.005%
81	15.024	4254	4256	4260	rVV5	846	564	0.04%	0.004%
82	15.047	4260	4263	4266	rBV4	632	409	0.03%	0.003%
83	15.063	4266	4268	4270	rBV3	754	505	0.03%	0.004%
84	15.143	4287	4293	4301	rVB8	1057	1808	0.11%	0.014%
85	15.201	4307	4311	4313	rBV4	1677	1234	0.08%	0.009%
86	15.214	4313	4315	4319	rVB4	1911	1256	0.08%	0.009%
87	15.262	4327	4330	4333	rBV5	832	676	0.04%	0.005%
88	15.355	4352	4359	4361	rBV6	767	831	0.05%	0.006%
89	15.397	4366	4372	4380	rVB8	3172	5598	0.36%	0.042%
90	15.429	4380	4382	4385	rBV4	785	472	0.03%	0.004%
91	15.558	4417	4422	4427	rBV7	1080	1078	0.07%	0.008%
92	15.584	4427	4430	4432	rVB5	809	492	0.03%	0.004%
93	15.600	4432	4435	4436	rBV3	997	443	0.03%	0.003%
94	15.613	4437	4439	4442	rVV4	817	401	0.03%	0.003%
95	15.709	4466	4469	4471	rBV3	707	417	0.03%	0.003%
96	15.783	4490	4492	4495	rBV4	671	440	0.03%	0.003%
97	15.979	4549	4553	4554	rBV3	1107	827	0.05%	0.006%
98	16.040	4569	4572	4575	rVB3	1216	781	0.05%	0.006%
99	16.188	4615	4618	4624	rVB4	1149	938	0.06%	0.007%
100	16.275	4643	4645	4647	rBV3	1338	787	0.05%	0.006%

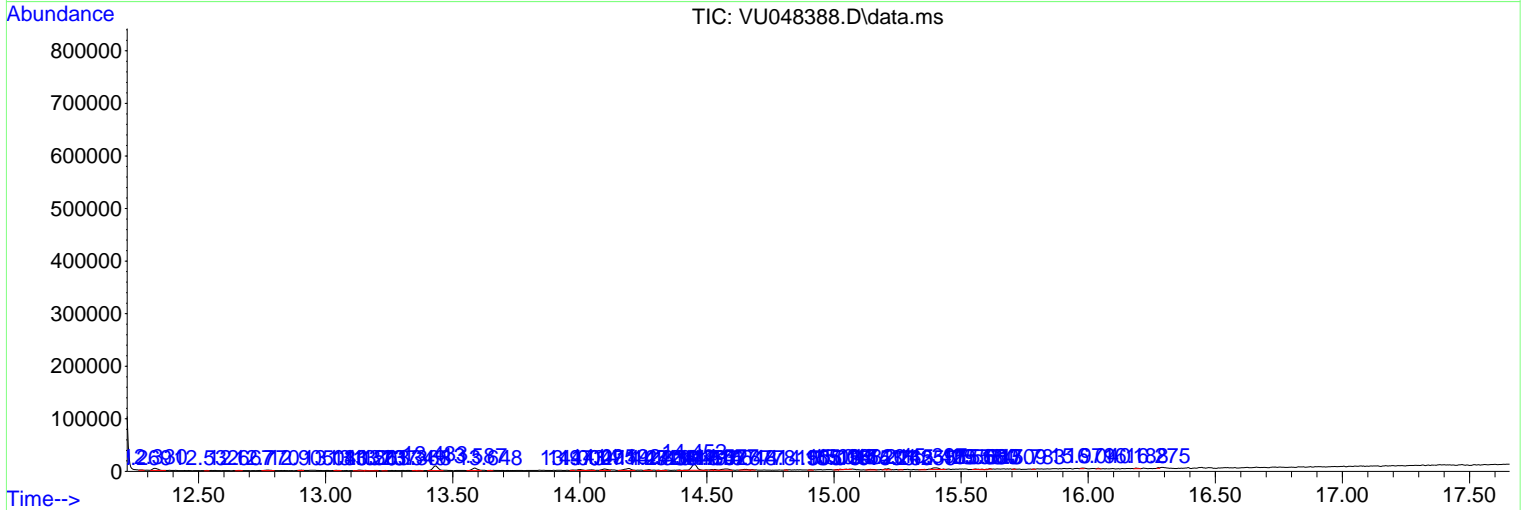
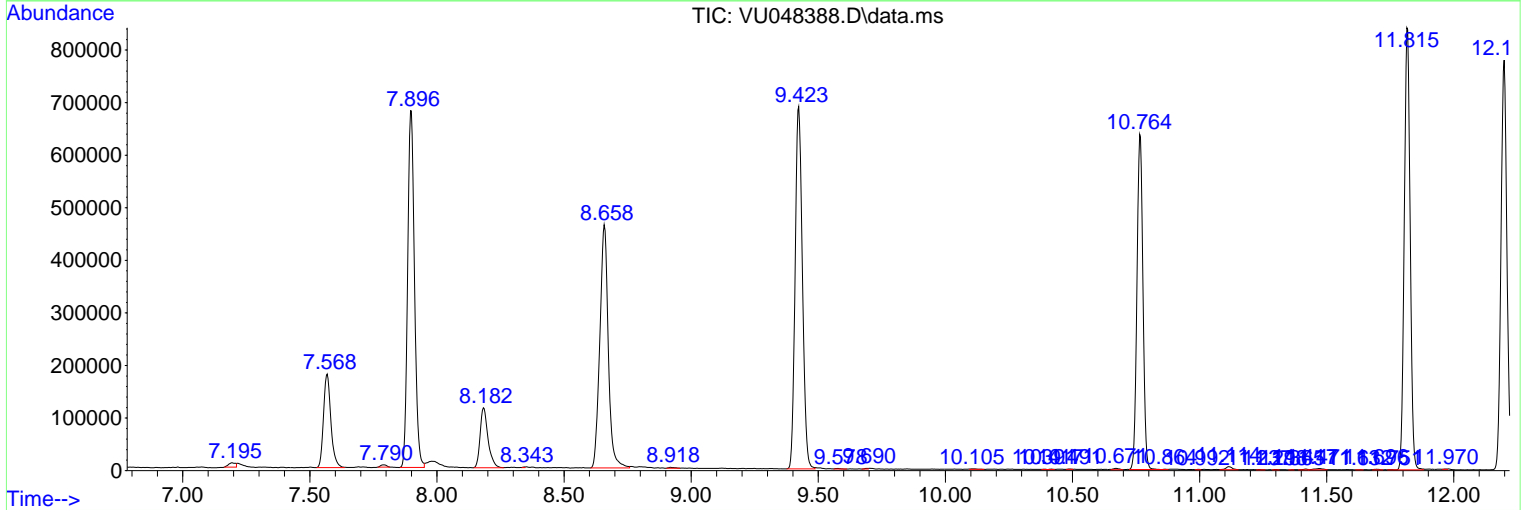
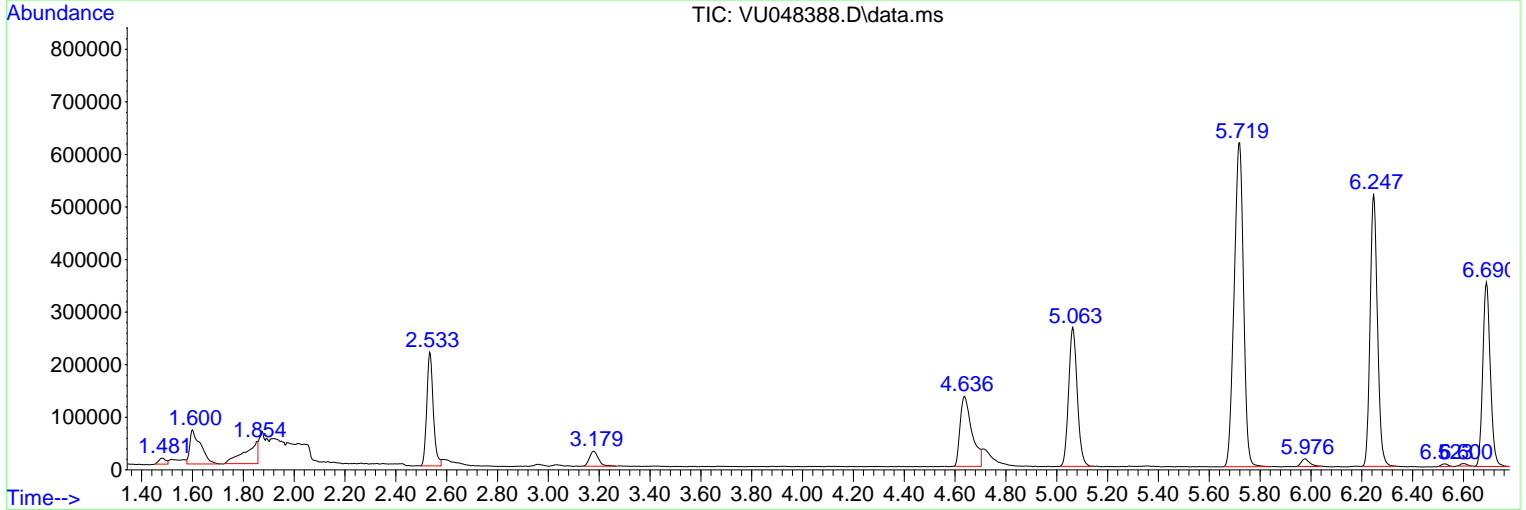
Sum of corrected areas: 13366508

Data Path : Z:\voasrv\HPCHEM1\MSVOA_U\Data\VU050322\
 Data File : VU048388.D
 Acq On : 03 May 2022 13:54
 Operator : SY/MD
 Sample : N2603-10ME
 Misc : 7.46g/5.0mL/100uL/5.0mL/MSVOA_U/MEOH
 ALS Vial : 9 Sample Multiplier: 1

Instrument :
 MSVOA_U
 ClientSampleId :
 EW491ME

Quant Method : Z:\voasrv\HPCHEM1\MSVOA_U\Method\SFAMULM042522WMA.M
 Quant Title : VOC Analysis

TIC Library : C:\Database\NIST20.L
 TIC Integration Parameters: LSCINT.P



Data Path : Z:\voasrv\HPCHEM1\MSVOA_U\Data\VU050322\
Data File : VU048388.D
Acq On : 03 May 2022 13:54
Operator : SY/MD
Sample : N2603-10ME
Misc : 7.46g/5.0mL/100uL/5.0mL/MSVOA_U/MEOH
ALS Vial : 9 Sample Multiplier: 1

Instrument :
MSVOA_U
ClientSampleId :
EW491ME

Quant Method : Z:\voasrv\HPCHEM1\MSVOA_U\Method\SFAMULM042522WMA.M
Quant Title : VOC Analysis

TIC Library : C:\Database\NIST0.L
TIC Integration Parameters: LSCINT.P

No Library Search Compounds Detected

Data Path : Z:\voasrv\HPCHEM1\MSVOA_U\Data\VU050322\
Data File : VU048388.D
Acq On : 03 May 2022 13:54
Operator : SY/MD
Sample : N2603-10ME
Misc : 7.46g/5.0mL/100uL/5.0mL/MSVOA_U/MEOH
ALS Vial : 9 Sample Multiplier: 1

Instrument :
MSVOA_U
ClientSampleId :
EW491ME

Quant Method : Z:\voasrv\HPCHEM1\MSVOA_U\Method\SFAMULM042522WMA.M
Quant Title : VOC Analysis

TIC Library : C:\Database\NIST0.L
TIC Integration Parameters: LSCINT.P

TIC Top Hit name	RT	EstConc	Units	Response	--Internal Standard--			
					#	RT	Resp	Conc
