

Data Path : Z:\voasrv\HPCHEM1\MSVOA_U\Data\VU050322\
 Data File : VU048397.D
 Acq On : 03 May 2022 17:54
 Operator : SY/MD
 Sample : N2668-08
 Misc : 5.0mL/MSVOA_U/WATER
 ALS Vial : 18 Sample Multiplier: 1

Instrument :
 MSVOA_U
 ClientSampleId :
 EXL72

Integration Parameters: LSCINT.P

Integrator: RTE
 Smoothing : OFF
 Sampling : 1
 Start Thrs: 0.2
 Stop Thrs : 0

Filtering: 5
 Min Area: 0 % of largest Peak
 Max Peaks: 100
 Peak Location: TOP

If leading or trailing edge < 100 prefer < Baseline drop else tangent >
 Peak separation: 5

Method : Z:\voasrv\HPCHEM1\MSVOA_U\Method\SFAMULM042522WMA.M
 Title : VOC Analysis

Signal : TIC: VU048397.D\data.ms

peak #	R.T. min	first scan	max scan	last scan	PK TY	peak height	corr. area	corr. % max.	% of total
1	1.485	41	45	51	rVB3	4662	4996	0.25%	0.034%
2	1.601	73	81	100	rBV	262859	336323	16.74%	2.284%
3	1.896	165	173	187	rBV	174261	257090	12.80%	1.746%
4	2.565	367	381	397	rBV	429775	711599	35.42%	4.832%
5	2.777	443	447	448	rBV3	546	332	0.02%	0.002%
6	2.867	473	475	483	rVB2	257	328	0.02%	0.002%
7	2.938	491	497	500	rBV2	554	591	0.03%	0.004%
8	2.957	501	503	508	rVB2	442	327	0.02%	0.002%
9	2.986	508	512	515	rVB3	294	249	0.01%	0.002%
10	3.009	515	519	523	rBV2	407	430	0.02%	0.003%
11	3.035	523	527	528	rBV2	572	328	0.02%	0.002%
12	3.112	547	551	555	rVB2	264	255	0.01%	0.002%
13	3.134	555	558	561	rVB3	352	206	0.01%	0.001%
14	3.183	561	573	586	rBV3	3184	7111	0.35%	0.048%
15	3.308	607	612	617	rBV2	183	244	0.01%	0.002%
16	3.372	630	632	636	rVB2	311	210	0.01%	0.001%
17	3.449	650	656	658	rBV2	281	198	0.01%	0.001%
18	3.465	658	661	666	rVV2	249	266	0.01%	0.002%
19	3.719	734	740	745	rVB	202	205	0.01%	0.001%
20	3.768	751	755	759	rBV	327	227	0.01%	0.002%
21	3.900	794	796	803	rVB	260	233	0.01%	0.002%
22	3.970	815	818	823	rVB2	352	238	0.01%	0.002%
23	4.182	877	884	890	rVB2	214	376	0.02%	0.003%
24	4.379	937	945	947	rBV	246	251	0.01%	0.002%
25	4.562	995	1002	1005	rBV2	207	245	0.01%	0.002%
26	4.620	1007	1020	1066	rBV	211646	513029	25.54%	3.484%
27	5.063	1140	1158	1186	rBV	354630	775806	38.62%	5.268%
28	5.292	1219	1229	1231	rBV4	763	1040	0.05%	0.007%
29	5.330	1236	1241	1245	rVV4	825	821	0.04%	0.006%
30	5.726	1342	1364	1397	rBV2	745919	2008984	100.00%	13.642%
31	5.973	1435	1441	1443	rBV3	640	612	0.03%	0.004%
32	6.038	1457	1461	1464	rBV2	468	397	0.02%	0.003%
33	6.250	1512	1527	1548	rBV	499307	947389	47.16%	6.433%
34	6.526	1606	1613	1614	rBV	1724	1505	0.07%	0.010%
35	6.591	1631	1633	1637	rVB2	418	313	0.02%	0.002%
36	6.690	1644	1664	1690	rBV	462327	894834	44.54%	6.076%

Data Path : Z:\voasrv\HPCHEM1\MSVOA_U\Data\VU050322\
 Data File : VU048397.D
 Acq On : 03 May 2022 17:54
 Operator : SY/MD
 Sample : N2668-08
 Misc : 5.0mL/MSVOA_U/WATER
 ALS Vial : 18 Sample Multiplier: 1

Instrument :
 MSVOA_U
 ClientSampleId :
 EXL72

Integration Parameters: LSCINT.P

Integrator: RTE
 Smoothing : OFF
 Sampling : 1
 Start Thrs : 0.2
 Stop Thrs : 0

Filtering: 5
 Min Area: 0 % of largest Peak
 Max Peaks: 100
 Peak Location: TOP

If leading or trailing edge < 100 prefer < Baseline drop else tangent >
 Peak separation: 5

Method : Z:\voasrv\HPCHEM1\MSVOA_U\Method\SFAMULM042522WMA.M
 Title : VOC Analysis

37	6.806	1693	1700	1708	rVB7	1561	2661	0.13%	0.018%
38	6.867	1715	1719	1724	rVB3	274	268	0.01%	0.002%
39	7.051	1769	1776	1778	rBV3	307	382	0.02%	0.003%
40	7.099	1785	1791	1793	rVB2	269	248	0.01%	0.002%
41	7.179	1805	1816	1834	rVB5	4105	8908	0.44%	0.060%
42	7.362	1866	1873	1879	rBV3	353	498	0.02%	0.003%
43	7.565	1923	1936	1958	rBV	238283	416095	20.71%	2.825%
44	7.694	1969	1976	1982	rBV6	1553	2061	0.10%	0.014%
45	7.793	2002	2007	2009	rBV2	608	461	0.02%	0.003%
46	7.899	2023	2040	2056	rBV	908590	1581365	78.71%	10.738%
47	8.131	2110	2112	2115	rBV2	351	219	0.01%	0.001%
48	8.179	2115	2127	2144	rBV	167330	281004	13.99%	1.908%
49	8.369	2183	2186	2189	rBV3	320	200	0.01%	0.001%
50	8.472	2207	2218	2229	rBV	4430	7569	0.38%	0.051%
51	8.555	2240	2244	2250	rVB5	593	527	0.03%	0.004%
52	8.636	2254	2269	2302	rBV2	617557	1156186	57.55%	7.851%
53	8.835	2328	2331	2335	rVB4	280	251	0.01%	0.002%
54	8.903	2348	2352	2354	rBV2	304	219	0.01%	0.001%
55	8.951	2363	2367	2371	rVB3	397	395	0.02%	0.003%
56	9.025	2385	2390	2396	rVB2	451	494	0.02%	0.003%
57	9.157	2425	2431	2433	rBV2	432	323	0.02%	0.002%
58	9.198	2439	2444	2448	rVB2	315	342	0.02%	0.002%
59	9.417	2499	2512	2552	rVB	710773	1191826	59.32%	8.093%
60	9.558	2552	2556	2557	rBV	427	204	0.01%	0.001%
61	9.697	2591	2599	2602	rBV2	1053	1313	0.07%	0.009%
62	9.742	2608	2613	2618	rVB2	381	366	0.02%	0.002%
63	9.809	2630	2634	2636	rBV	338	238	0.01%	0.002%
64	9.925	2668	2670	2675	rVB	384	227	0.01%	0.002%
65	10.105	2720	2726	2732	rBV2	358	529	0.03%	0.004%
66	10.169	2743	2746	2750	rBV3	274	227	0.01%	0.002%
67	10.304	2785	2788	2795	rBV2	188	198	0.01%	0.001%
68	10.439	2824	2830	2832	rBV2	370	310	0.02%	0.002%
69	10.452	2832	2834	2839	rVB2	394	275	0.01%	0.002%
70	10.671	2894	2902	2909	rBV7	3063	4113	0.20%	0.028%
71	10.758	2915	2929	2951	rBV	708126	1147967	57.14%	7.795%
72	10.893	2962	2971	2981	rVB2	8487	13925	0.69%	0.095%
73	11.092	3026	3033	3034	rBV3	308	333	0.02%	0.002%
74	11.150	3047	3051	3056	rBV2	271	253	0.01%	0.002%
75	11.385	3121	3124	3127	rVB2	389	284	0.01%	0.002%
76	11.414	3127	3133	3136	rBV3	634	522	0.03%	0.004%

Data Path : Z:\voasrv\HPCHEM1\MSVOA_U\Data\VU050322\
 Data File : VU048397.D
 Acq On : 03 May 2022 17:54
 Operator : SY/MD
 Sample : N2668-08
 Misc : 5.0mL/MSVOA_U/WATER
 ALS Vial : 18 Sample Multiplier: 1

Instrument :
 MSVOA_U
 ClientSampleId :
 EXL72

Integration Parameters: LSCINT.P

Integrator: RTE
 Smoothing : OFF Filtering: 5
 Sampling : 1 Min Area: 0 % of largest Peak
 Start Thrs: 0.2 Max Peaks: 100
 Stop Thrs : 0 Peak Location: TOP

If leading or trailing edge < 100 prefer < Baseline drop else tangent >
 Peak separation: 5

Method : Z:\voasrv\HPCHEM1\MSVOA_U\Method\SFAMULM042522WMA.M
 Title : VOC Analysis

77	11.455	3140	3146	3155	rVV4	1589	2444	0.12%	0.017%
78	11.539	3168	3172	3180	rVB2	369	394	0.02%	0.003%
79	11.581	3180	3185	3188	rBV2	634	615	0.03%	0.004%
80	11.697	3216	3221	3227	rVB3	910	868	0.04%	0.006%
81	11.812	3244	3257	3282	rBV	670003	1067389	53.13%	7.248%
82	11.944	3294	3298	3301	rVB3	1104	968	0.05%	0.007%
83	11.967	3301	3305	3316	rVB5	2049	3218	0.16%	0.022%
84	12.041	3325	3328	3330	rBV	312	203	0.01%	0.001%
85	12.192	3361	3375	3397	rBV	814216	1342960	66.85%	9.119%
86	12.517	3471	3476	3478	rBV	413	434	0.02%	0.003%
87	12.642	3510	3515	3519	rVB4	466	509	0.03%	0.003%
88	12.771	3546	3555	3565	rVB4	3871	6450	0.32%	0.044%
89	12.841	3574	3577	3581	rBV	283	242	0.01%	0.002%
90	13.002	3623	3627	3629	rBV	550	403	0.02%	0.003%
91	13.401	3747	3751	3755	rBV2	359	386	0.02%	0.003%
92	13.613	3815	3817	3820	rBV	313	228	0.01%	0.002%
93	14.436	4069	4073	4079	rBV	1584	1748	0.09%	0.012%
94	14.494	4088	4091	4093	rBV	1389	980	0.05%	0.007%
95	14.533	4097	4103	4109	rVV4	1272	1878	0.09%	0.013%
96	14.626	4130	4132	4136	rVB	1246	709	0.04%	0.005%
97	14.648	4136	4139	4142	rVB	1172	715	0.04%	0.005%
98	14.671	4143	4146	4151	rBV2	621	467	0.02%	0.003%
99	14.764	4172	4175	4179	rBV2	731	676	0.03%	0.005%
100	15.063	4264	4268	4272	rVB2	634	552	0.03%	0.004%

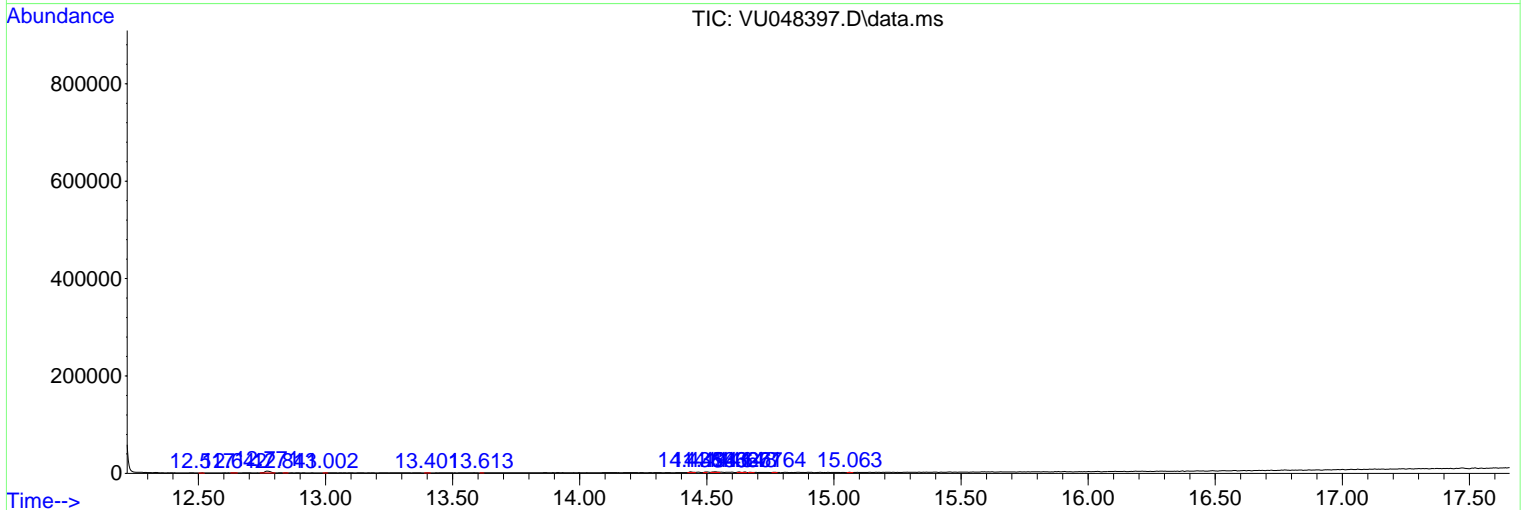
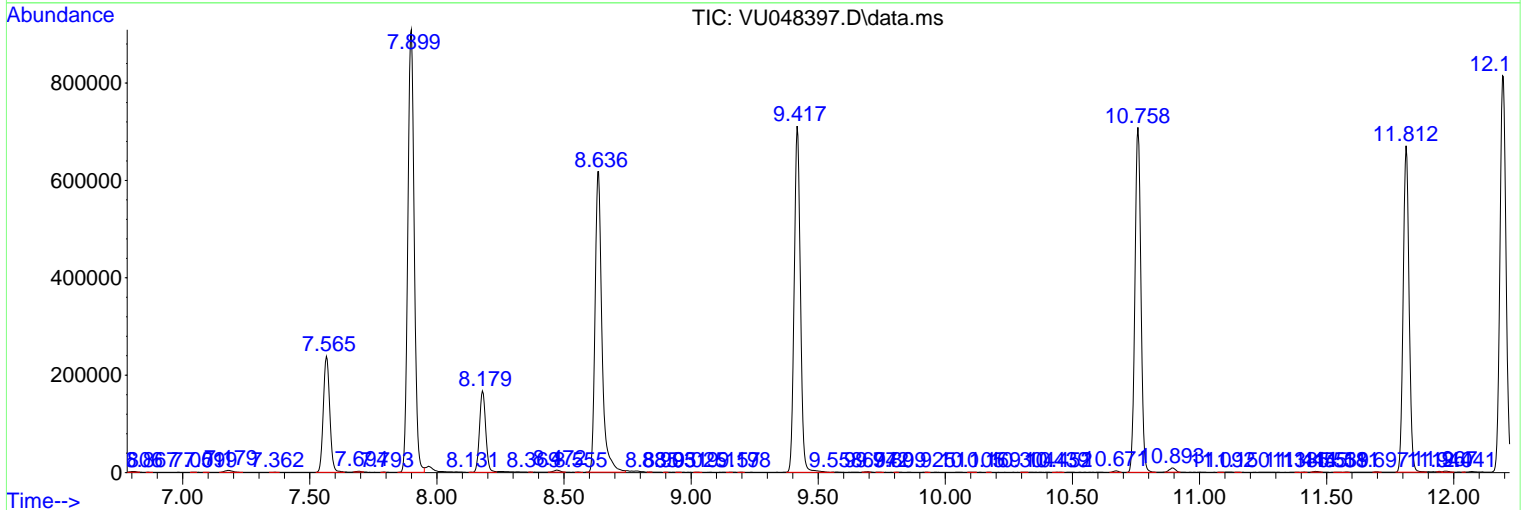
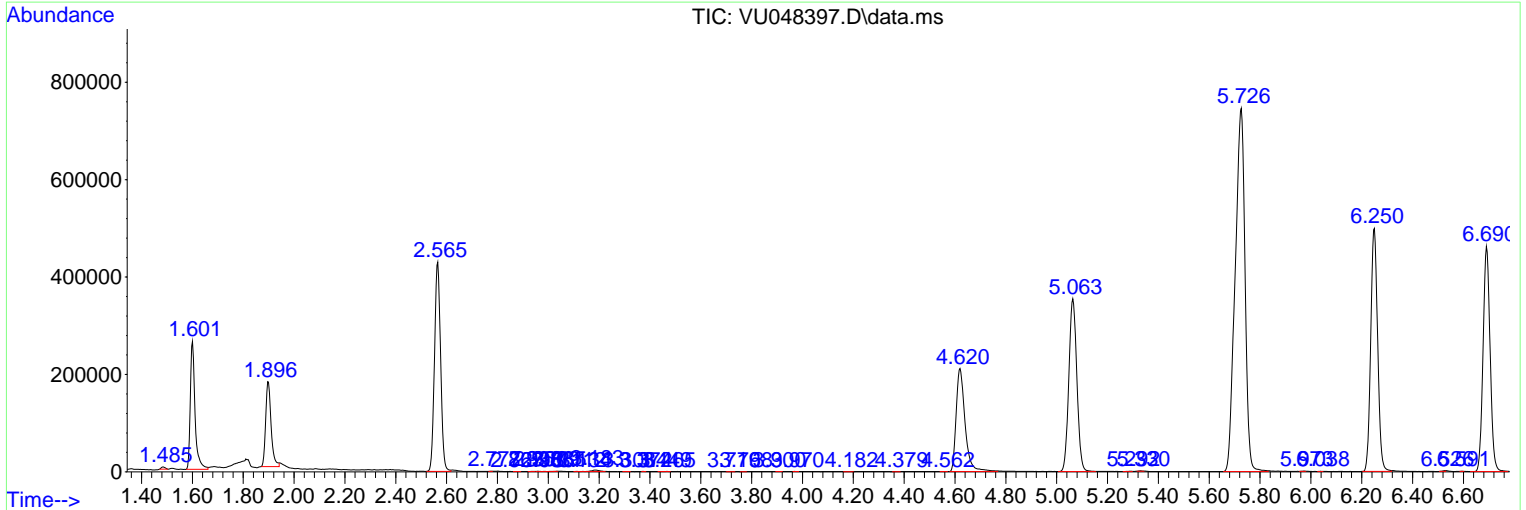
Sum of corrected areas: 14726810

Data Path : Z:\voasrv\HPCHEM1\MSVOA_U\Data\VU050322\
 Data File : VU048397.D
 Acq On : 03 May 2022 17:54
 Operator : SY/MD
 Sample : N2668-08
 Misc : 5.0mL/MSVOA_U/WATER
 ALS Vial : 18 Sample Multiplier: 1

Instrument :
 MSVOA_U
 ClientSampleId :
 EXL72

Quant Method : Z:\voasrv\HPCHEM1\MSVOA_U\Method\SFAMULM042522WMA.M
 Quant Title : VOC Analysis

TIC Library : C:\Database\NIST20.L
 TIC Integration Parameters: LSCINT.P



Library Search Compound Report

Data Path : Z:\voasrv\HPCHEM1\MSVOA_U\Data\VU050322\
Data File : VU048397.D
Acq On : 03 May 2022 17:54
Operator : SY/MD
Sample : N2668-08
Misc : 5.0mL/MSVOA_U/WATER
ALS Vial : 18 Sample Multiplier: 1

Instrument :
MSVOA_U
ClientSampleId :
EXL72

Quant Method : Z:\voasrv\HPCHEM1\MSVOA_U\Method\SFAMULM042522WMA.M
Quant Title : VOC Analysis

TIC Library : C:\Database\NIST20.L
TIC Integration Parameters: LSCINT.P

No Library Search Compounds Detected

Data Path : Z:\voasrv\HPCHEM1\MSVOA_U\Data\VU050322\
Data File : VU048397.D
Acq On : 03 May 2022 17:54
Operator : SY/MD
Sample : N2668-08
Misc : 5.0mL/MSVOA_U/WATER
ALS Vial : 18 Sample Multiplier: 1

Instrument :
MSVOA_U
ClientSampleId :
EXL72

Quant Method : Z:\voasrv\HPCHEM1\MSVOA_U\Method\SFAMULM042522WMA.M
Quant Title : VOC Analysis

TIC Library : C:\Database\NIST20.L
TIC Integration Parameters: LSCINT.P

TIC Top Hit name	RT	EstConc	Units	Response	--Internal Standard--		
					#	RT	Resp Conc
