

Data Path : W:\HPCHEM1\MSVOA_U\DATA\VU050418\
 Data File : VU023645.D
 Acq On : 04 May 2018 21:53
 Operator : MD/SY
 Sample : J2630-05
 Misc : 5.0mL/MSVOA_U/WATER
 ALS Vial : 42 Sample Multiplier: 1

Quant Time: May 05 01:20:39 2018
 Quant Method : W:\HPCHEM1\MSVOA_U\METHOD\SOMUTR050418WMA.M
 Quant Title : TRACE VOA SOM01.0
 QLast Update : Sat May 05 01:17:03 2018
 Response via : Initial Calibration

Internal Standards	R.T.	QIon	Response	Conc	Units	Dev(Min)
1) 1,4-Difluorobenzene	5.89	114	147161	5.00	ug/L	0.00
28) Chlorobenzene-d5	9.09	117	148240	5.00	ug/L	0.00
60) 1,4-Dichlorobenzene-d4	11.49	152	66278	5.00	ug/L	0.00

System Monitoring Compounds

4) Vinyl Chloride-d3	1.40	65	49600	4.65	ug/L	0.00
Spiked Amount	5.000	Range	40 - 130	Recovery	=	93.00%
7) Chloroethane-d5	1.68	69	40144	5.06	ug/L	0.00
Spiked Amount	5.000	Range	65 - 130	Recovery	=	101.20%
11) 1,1-Dichloroethene-d2	2.27	63	66785	3.51	ug/L	0.00
Spiked Amount	5.000	Range	60 - 125	Recovery	=	70.20%
20) 2-Butanone-d5	4.20	46	163039	52.80	ug/L	0.00
Spiked Amount	50.000	Range	40 - 130	Recovery	=	105.60%
24) Chloroform-d	4.65	84	95863	5.01	ug/L	0.00
Spiked Amount	5.000	Range	70 - 125	Recovery	=	100.20%
26) 1,2-Dichloroethane-d4	5.32	65	53433	5.21	ug/L	0.00
Spiked Amount	5.000	Range	70 - 130	Recovery	=	104.20%
32) Benzene-d6	5.34	84	189827	4.83	ug/L	0.00
Spiked Amount	5.000	Range	70 - 125	Recovery	=	96.60%
36) 1,2-Dichloropropane-d6	6.34	67	65179	5.03	ug/L	0.00
Spiked Amount	5.000	Range	60 - 140	Recovery	=	100.60%
41) Toluene-d8	7.57	98	155042	4.24	ug/L	0.00
Spiked Amount	5.000	Range	70 - 130	Recovery	=	84.80%
43) trans-1,3-Dichloropropene-	7.86	79	20107	4.21	ug/L	0.00
Spiked Amount	5.000	Range	55 - 130	Recovery	=	84.20%
46) 2-Hexanone-d5	8.32	63	127568	52.17	ug/L	0.00
Spiked Amount	50.000	Range	45 - 130	Recovery	=	104.34%
57) 1,1,2,2-Tetrachloroethane-	10.44	84	51639	5.01	ug/L	0.00
Spiked Amount	5.000	Range	65 - 120	Recovery	=	100.20%
64) 1,2-Dichlorobenzene-d4	11.87	152	64328	5.22	ug/L	0.00
Spiked Amount	5.000	Range	80 - 120	Recovery	=	104.40%

Target Compounds

						Qvalue
3) Chloromethane	1.30	50	7287	0.48	ug/L #	69
5) Vinyl chloride	1.40	62	48738	3.54	ug/L #	57
8) Chloroethane	1.48	64	35985	4.28	ug/L #	55
13) Acetone	2.33	43	10897	6.18	ug/L	92
15) Methyl Acetate	2.70	43	3142	0.63	ug/L #	56
18) trans-1,2-Dichloroethene	2.98	96	24364	2.54	ug/L	96
21) 2-Butanone	4.29	43	2501	0.77	ug/L #	51
22) cis-1,2-Dichloroethene	4.23	96	492986	43.32	ug/L	98
30) Cyclohexane	4.99	56	22262	1.22	ug/L	100
34) Trichloroethene	6.19	95	97971	8.42	ug/L	98
35) Methylcyclohexane	6.42	83	6900	0.39	ug/L	93
37) 1,2-Dichloropropane	6.34	63	6653	0.54	ug/L #	89
47) Tetrachloroethene	8.23	164	166701	18.09	ug/L	98
48) 2-Hexanone	8.32	43	16397	2.99	ug/L #	66
49) Dibromochloromethane	8.23	129	156121	17.50	ug/L #	9
59) 1,2,3-Trichloropropane	11.49	75	8111	1.11	ug/L	96

Data Path : W:\HPCHEM1\MSVOA_U\DATA\VU050418\
 Data File : VU023645.D
 Acq On : 04 May 2018 21:53
 Operator : MD/SY
 Sample : J2630-05
 Misc : 5.0mL/MSVOA_U/WATER
 ALS Vial : 42 Sample Multiplier: 1

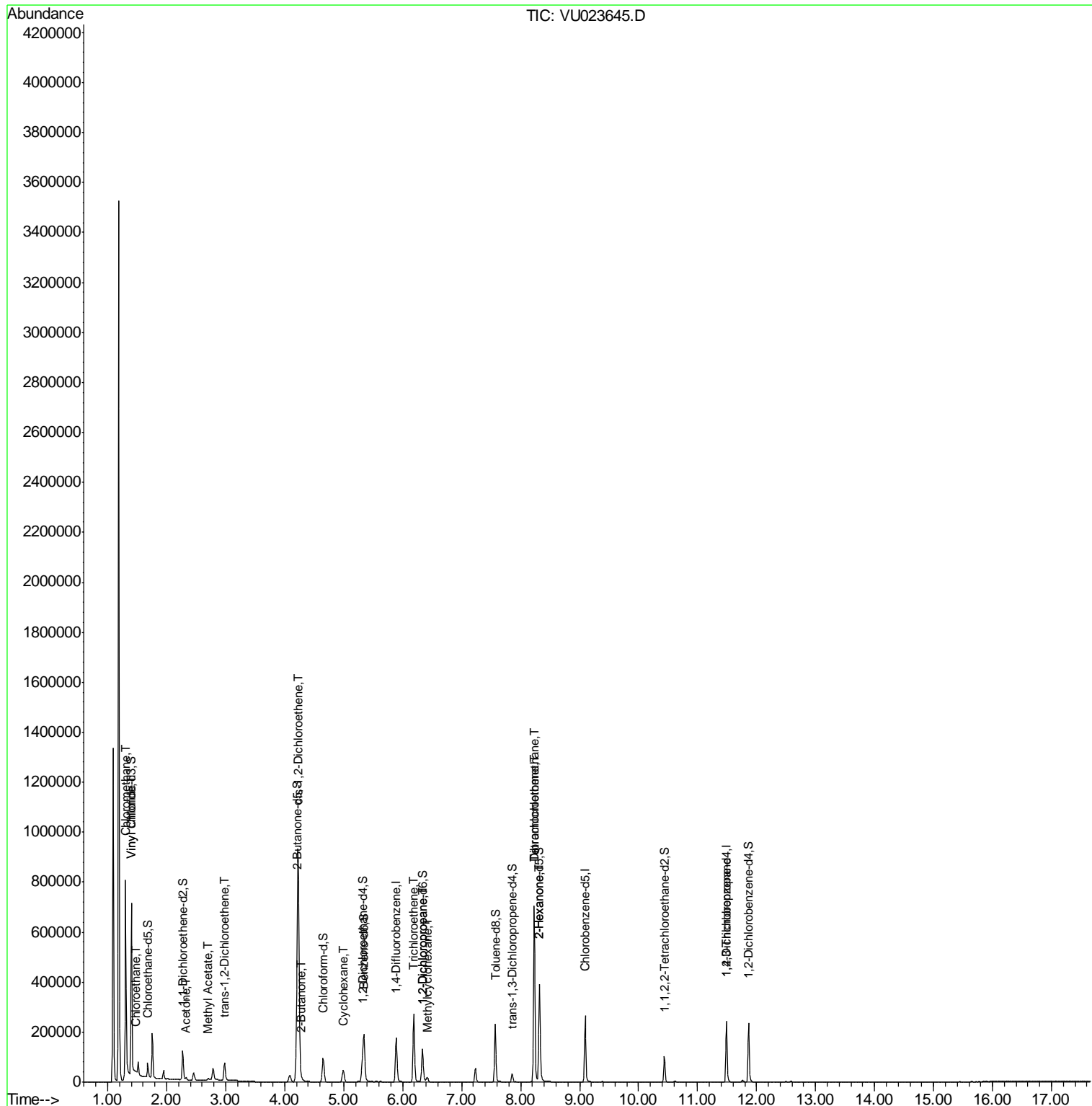
Quant Time: May 05 01:20:39 2018
 Quant Method : W:\HPCHEM1\MSVOA_U\METHOD\SOMUTR050418WMA.M
 Quant Title : TRACE VOA SOM01.0
 QLast Update : Sat May 05 01:17:03 2018
 Response via : Initial Calibration

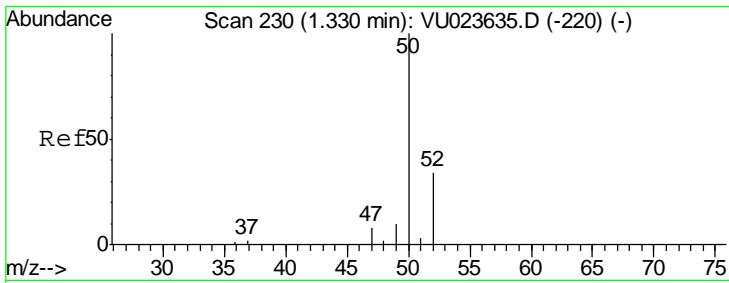
Internal Standards	R.T.	QIon	Response	Conc	Units	Dev(Min)
--------------------	------	------	----------	------	-------	----------

(#) = qualifier out of range (m) = manual integration (+) = signals summed

Data Path : W:\HPCHEM1\MSVOA_U\DATA\VU050418\
 Data File : VU023645.D
 Acq On : 04 May 2018 21:53
 Operator : MD/SY
 Sample : J2630-05
 Misc : 5.0mL/MSVOA_U/WATER
 ALS Vial : 42 Sample Multiplier: 1

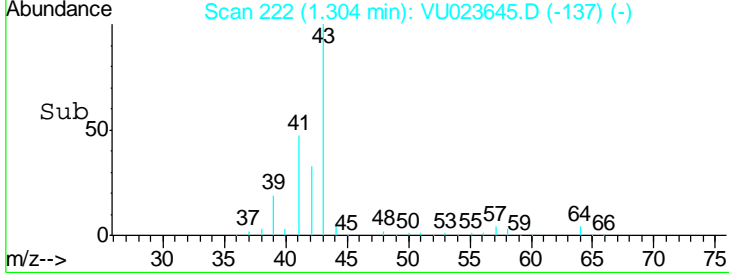
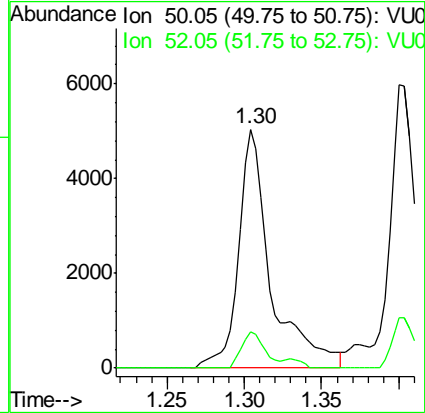
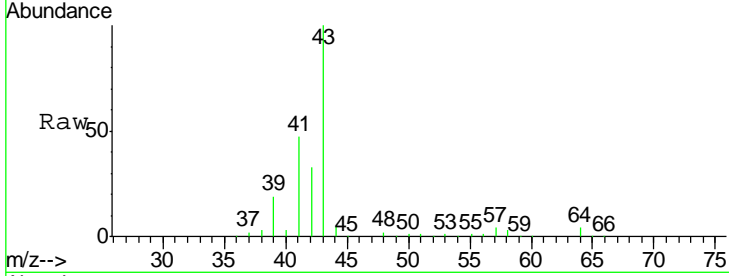
Quant Time: May 05 01:20:39 2018
 Quant Method : W:\HPCHEM1\MSVOA_U\METHOD\SOMUTR050418WMA.M
 Quant Title : TRACE VOA SOM01.0
 QLast Update : Sat May 05 01:17:03 2018
 Response via : Initial Calibration





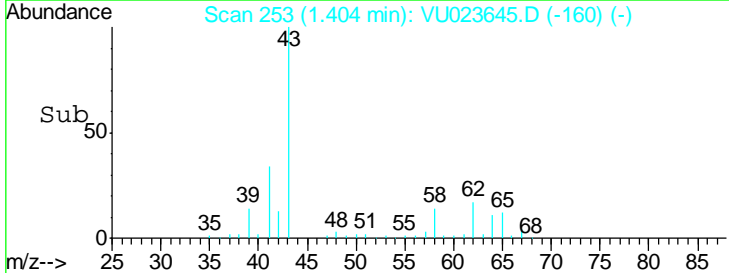
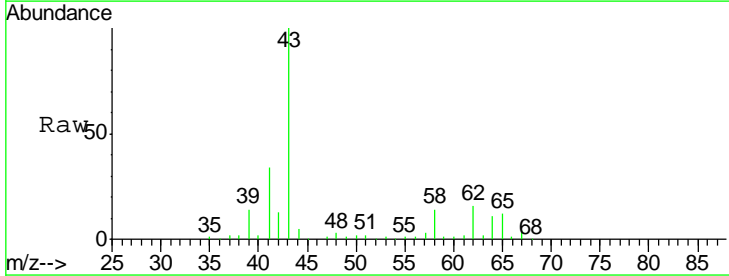
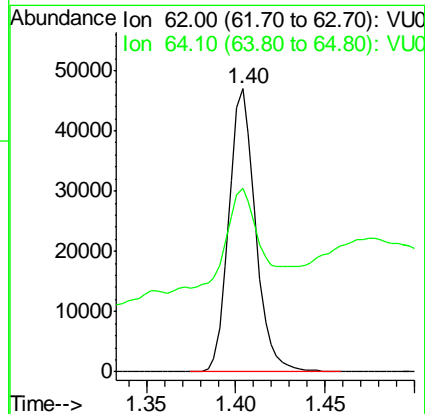
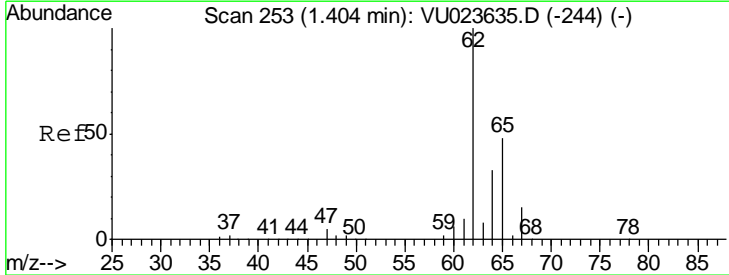
#3
 Chloromethane
 Concen: 0.48 ug/L
 RT: 1.30 min Scan# 222
 Delta R.T. -0.03 min
 Lab File: VU023645.D
 Acq: 04 May 2018 21:53

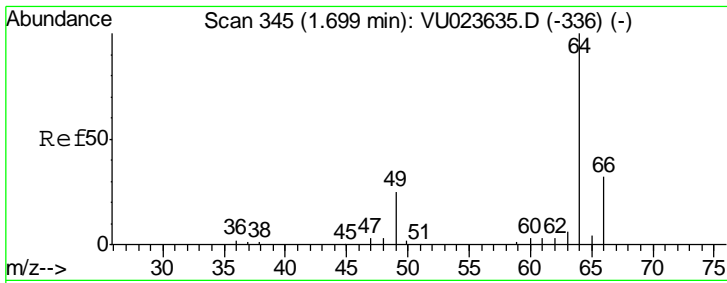
Tgt Ion: 50 Resp: 7287
 Ion Ratio Lower Upper
 50 100
 52 15.1 22.8 42.4#



#5
 Vinyl chloride
 Concen: 3.54 ug/L
 RT: 1.40 min Scan# 253
 Delta R.T. 0.00 min
 Lab File: VU023645.D
 Acq: 04 May 2018 21:53

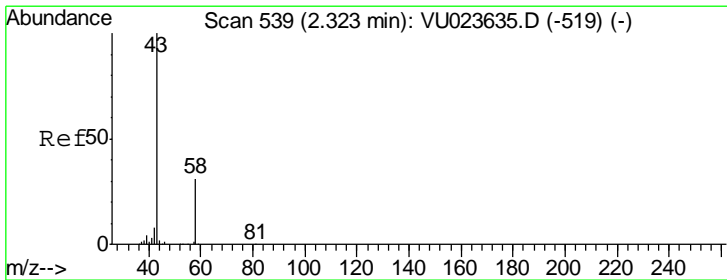
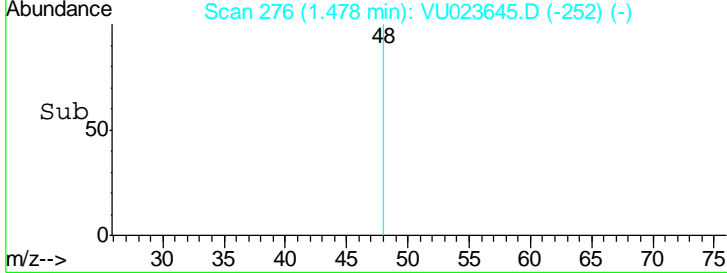
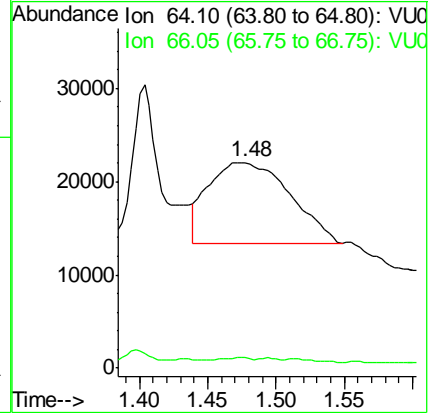
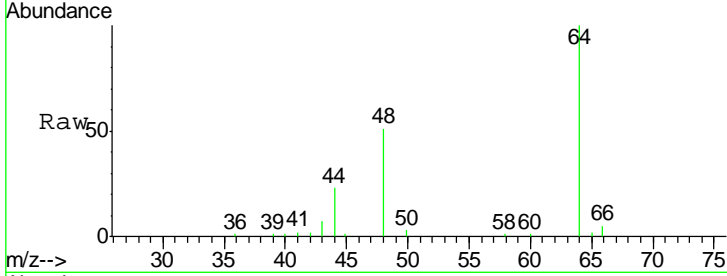
Tgt Ion: 62 Resp: 48738
 Ion Ratio Lower Upper
 62 100
 64 64.6 26.9 49.9#





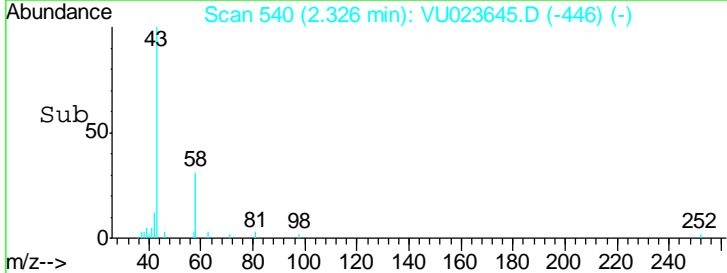
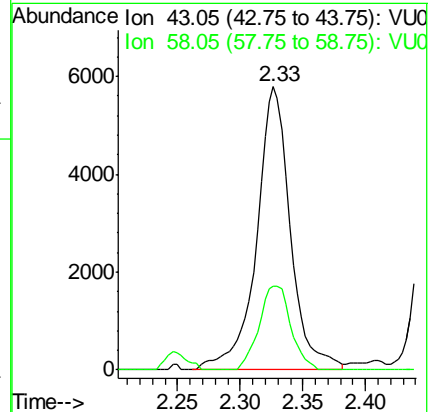
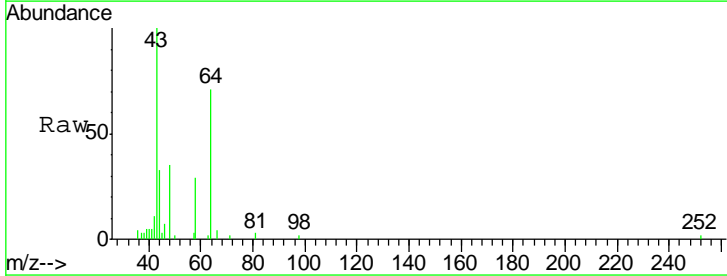
#8
 Chloroethane
 Concen: 4.28 ug/L
 RT: 1.48 min Scan# 276
 Delta R.T. -0.22 min
 Lab File: VU023645.D
 Acq: 04 May 2018 21:53

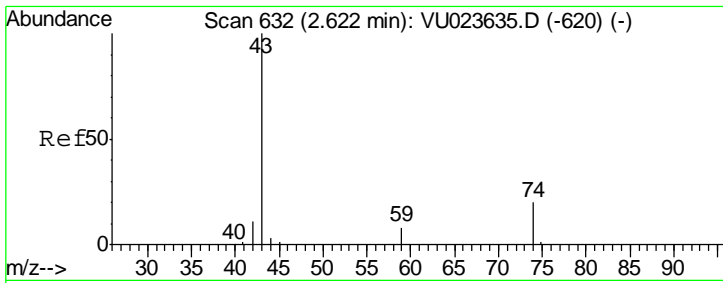
Tgt Ion: 64 Resp: 35985
 Ion Ratio Lower Upper
 64 100
 66 5.0 20.6 38.2#



#13
 Acetone
 Concen: 6.18 ug/L
 RT: 2.33 min Scan# 540
 Delta R.T. 0.00 min
 Lab File: VU023645.D
 Acq: 04 May 2018 21:53

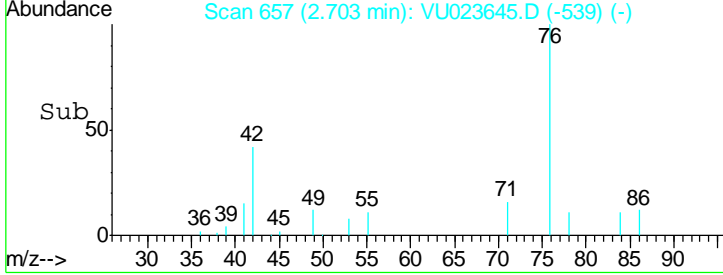
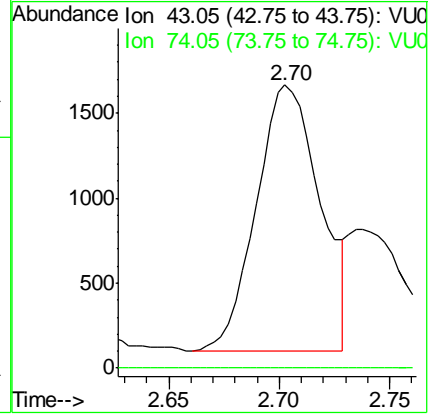
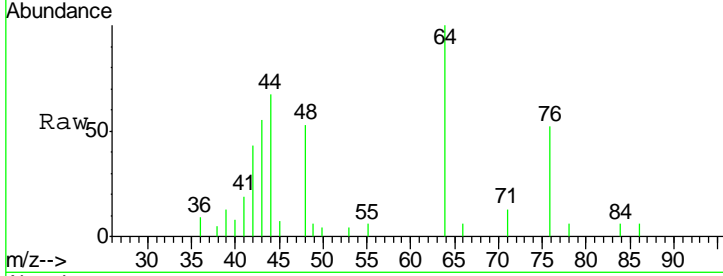
Tgt Ion: 43 Resp: 10897
 Ion Ratio Lower Upper
 43 100
 58 27.7 0.0 63.8





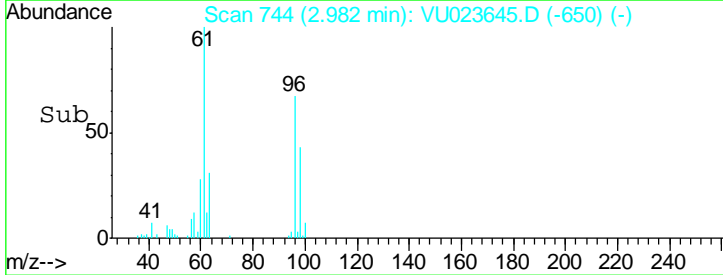
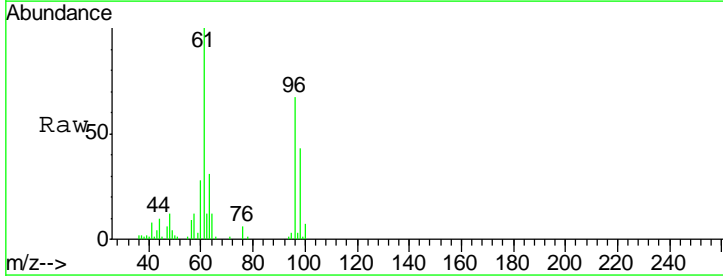
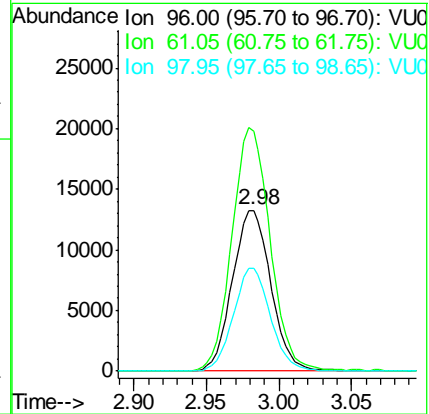
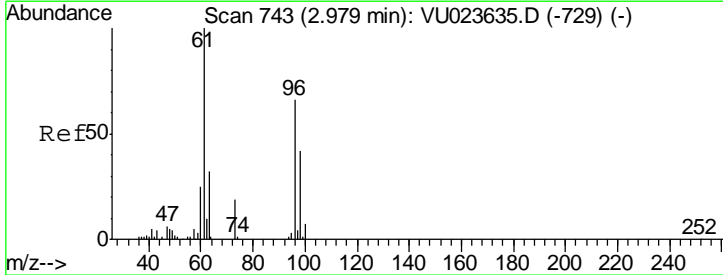
#15
 Methyl Acetate
 Concen: 0.63 ug/L
 RT: 2.70 min Scan# 657
 Delta R.T. 0.08 min
 Lab File: VU023645.D
 Acq: 04 May 2018 21:53

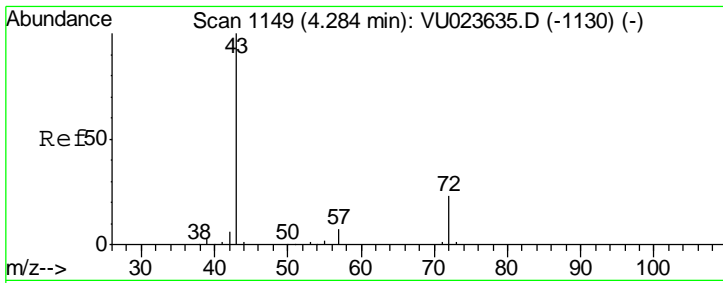
Tgt Ion	Resp	Lower	Upper
43	100		
74	0.0	16.6	24.8#



#18
 trans-1,2-Dichloroethene
 Concen: 2.54 ug/L
 RT: 2.98 min Scan# 744
 Delta R.T. 0.00 min
 Lab File: VU023645.D
 Acq: 04 May 2018 21:53

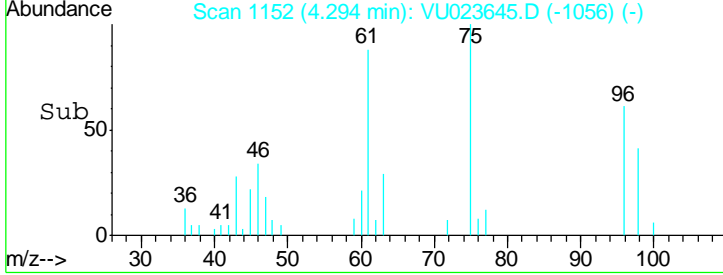
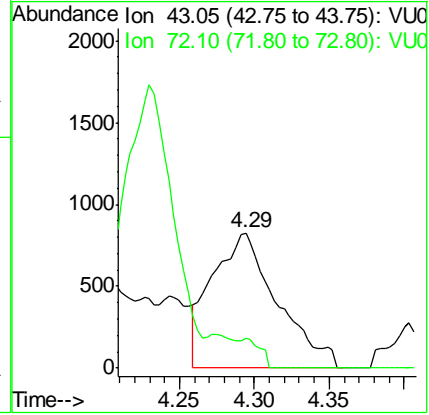
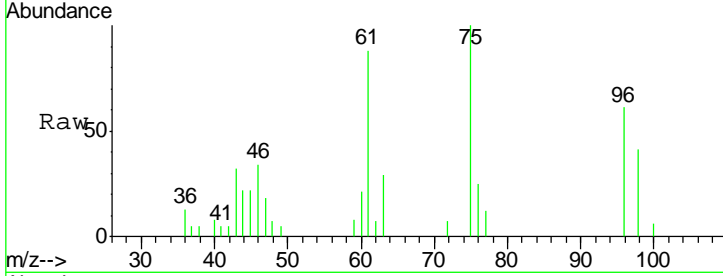
Tgt Ion	Resp	Lower	Upper
96	100		
61	149.4	109.0	202.4
98	64.3	44.7	83.1





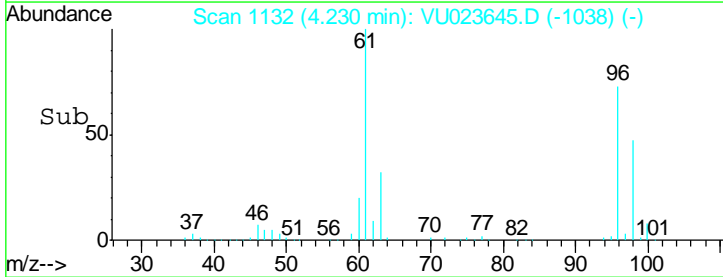
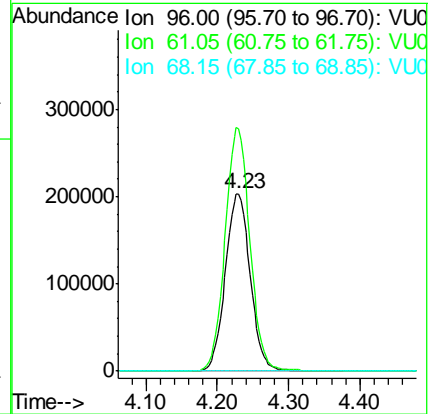
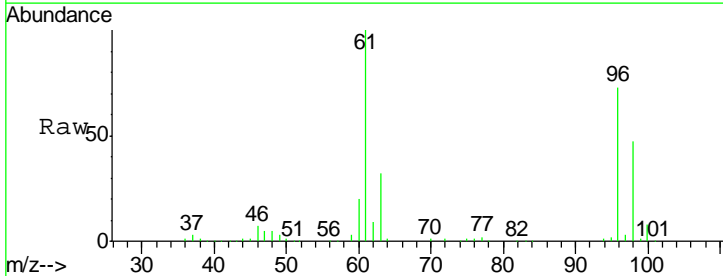
#21
 2-Butanone
 Concen: 0.77 ug/L
 RT: 4.29 min Scan# 1152
 Delta R.T. 0.01 min
 Lab File: VU023645.D
 Acq: 04 May 2018 21:53

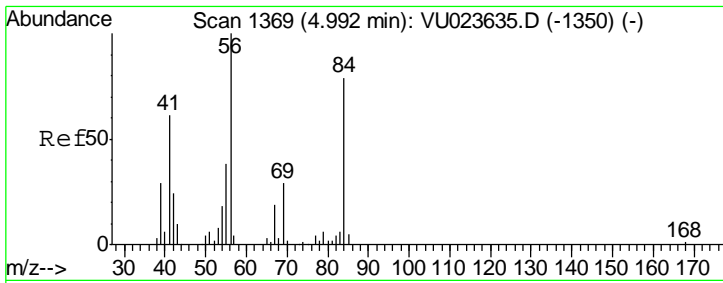
Tgt Ion	Resp	Lower	Upper
43	100		
72	0.0	12.3	36.8#



#22
 cis-1,2-Dichloroethene
 Concen: 43.32 ug/L
 RT: 4.23 min Scan# 1132
 Delta R.T. 0.00 min
 Lab File: VU023645.D
 Acq: 04 May 2018 21:53

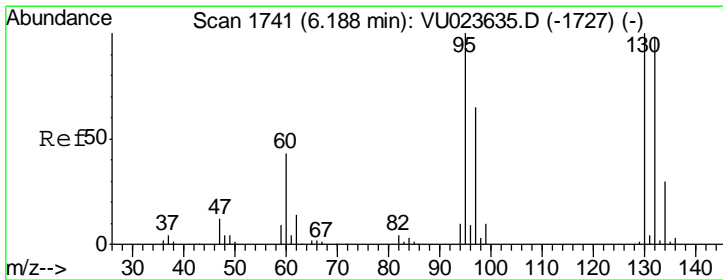
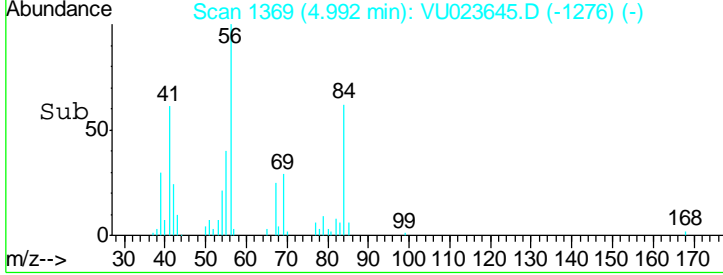
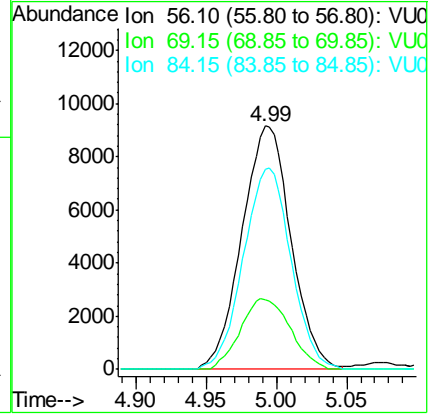
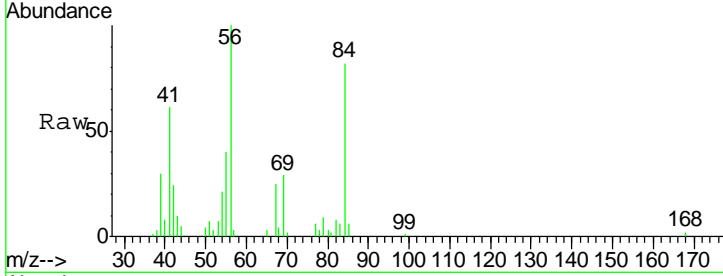
Tgt Ion	Resp	Lower	Upper
96	100		
61	137.2	94.6	175.6
68	0.0	0.0	0.0





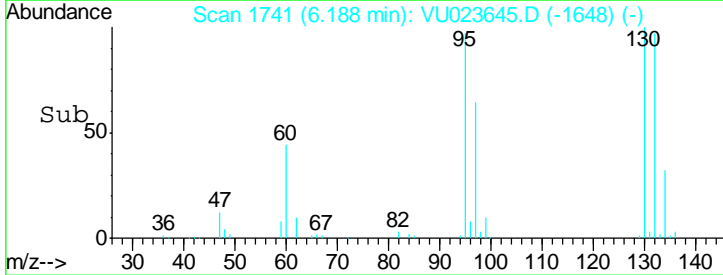
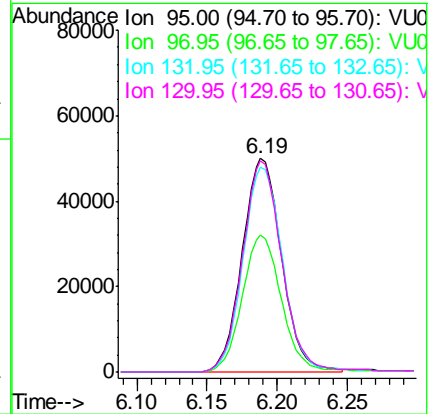
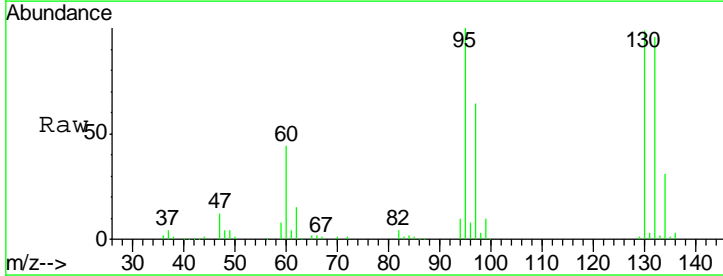
#30
 Cyclohexane
 Concen: 1.22 ug/L
 RT: 4.99 min Scan# 1369
 Delta R.T. 0.00 min
 Lab File: VU023645.D
 Acq: 04 May 2018 21:53

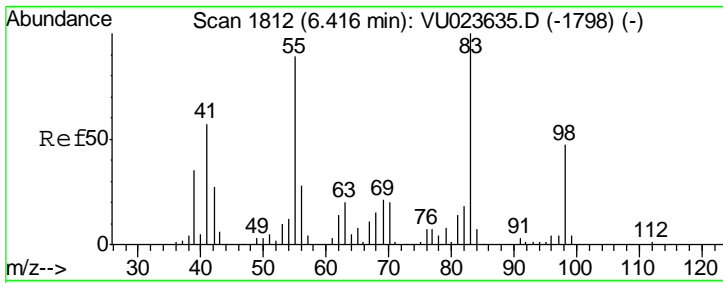
Tgt Ion	Resp	Lower	Upper
56	100		
69	29.3	23.6	35.4
84	80.1	64.4	96.6



#34
 Trichloroethene
 Concen: 8.42 ug/L
 RT: 6.19 min Scan# 1741
 Delta R.T. 0.00 min
 Lab File: VU023645.D
 Acq: 04 May 2018 21:53

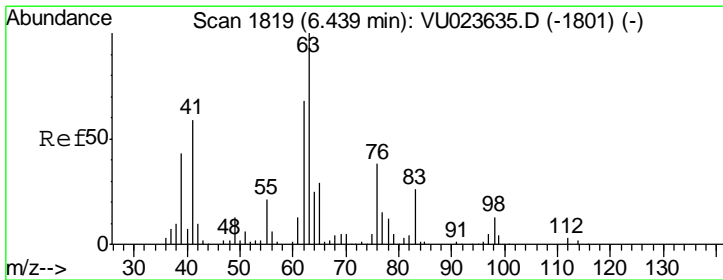
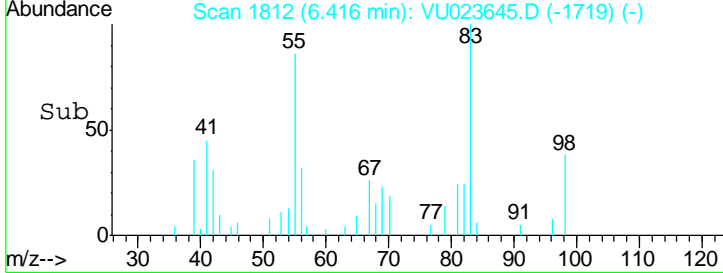
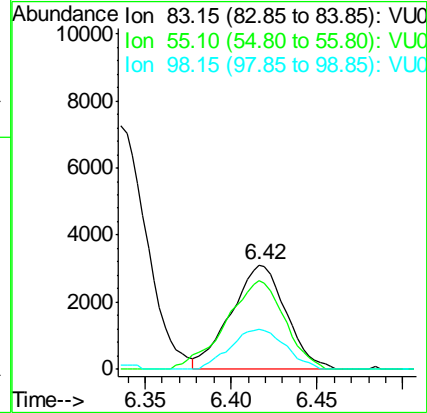
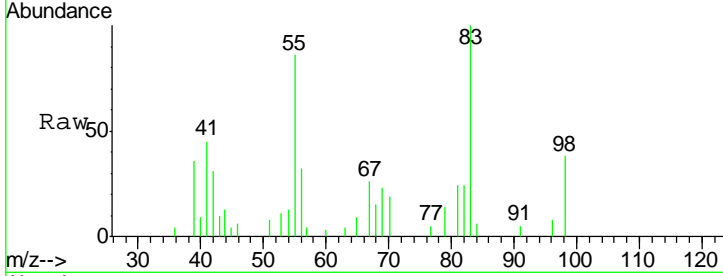
Tgt Ion	Resp	Lower	Upper
95	100		
97	63.9	46.0	85.4
132	95.8	68.1	126.5
130	99.1	70.1	130.1





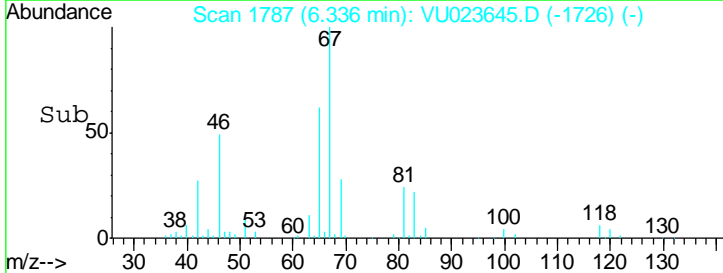
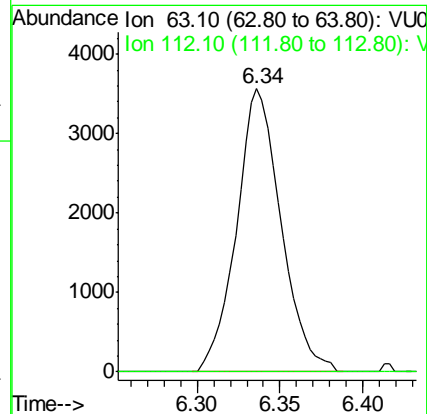
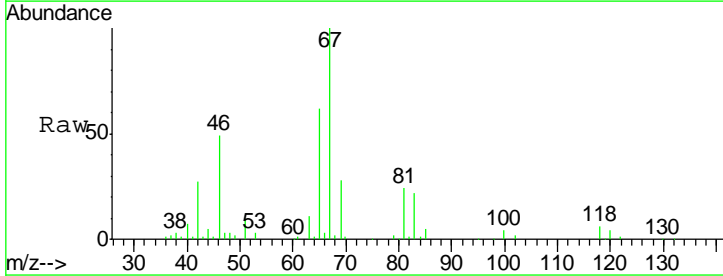
#35
 Methylcyclohexane
 Concen: 0.39 ug/L
 RT: 6.42 min Scan# 1812
 Delta R.T. 0.00 min
 Lab File: VU023645.D
 Acq: 04 May 2018 21:53

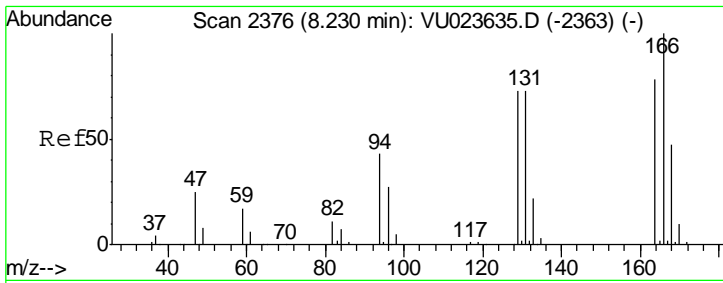
Tgt Ion	Resp	Lower	Upper
83	100		
55	90.5	68.4	102.6
98	38.5	36.7	55.1



#37
 1,2-Dichloropropane
 Concen: 0.54 ug/L
 RT: 6.34 min Scan# 1787
 Delta R.T. -0.10 min
 Lab File: VU023645.D
 Acq: 04 May 2018 21:53

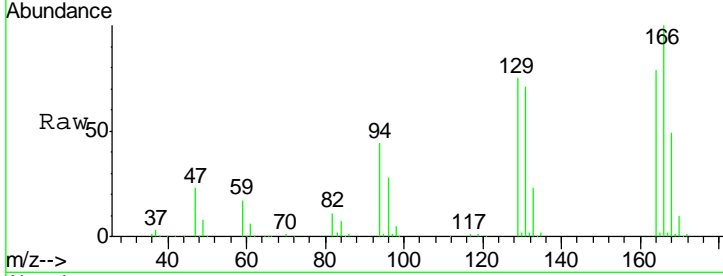
Tgt Ion	Resp	Lower	Upper
63	100		
112	0.0	3.0	4.4#



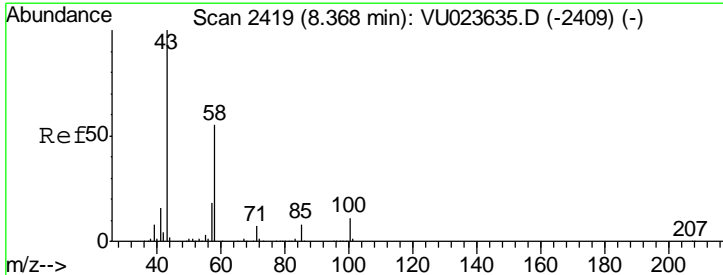
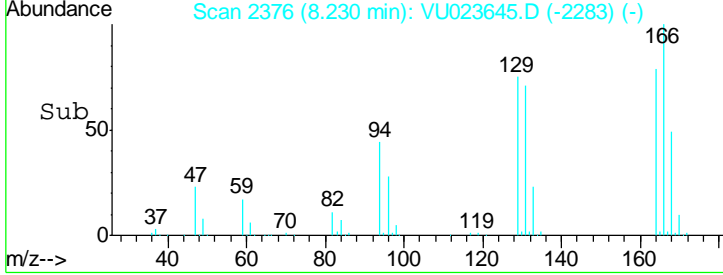
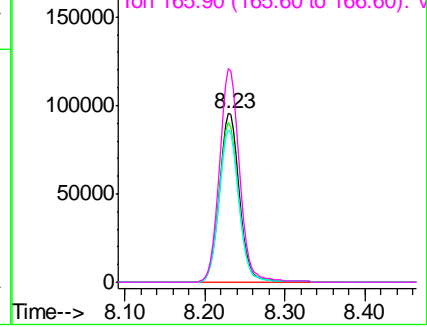


#47
 Tetrachloroethene
 Concen: 18.09 ug/L
 RT: 8.23 min Scan# 2376
 Delta R.T. 0.00 min
 Lab File: VU023645.D
 Acq: 04 May 2018 21:53

Tgt Ion	Resp	Lower	Upper
164	100		
129	94.6	64.4	119.6
131	90.3	63.9	118.7
166	126.6	90.0	167.2

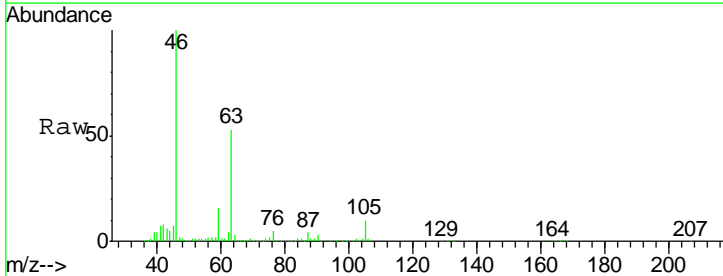


Abundance Ion 163.90 (163.60 to 164.60): V
 Ion 128.95 (128.65 to 129.65): V
 Ion 130.95 (130.65 to 131.65): V
 Ion 165.90 (165.60 to 166.60): V

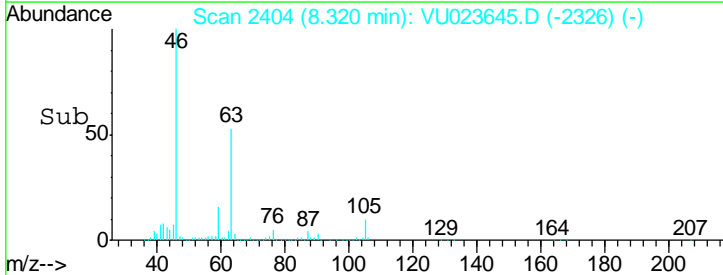
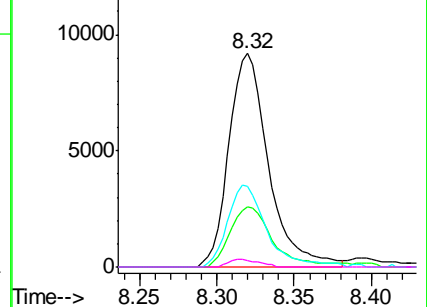


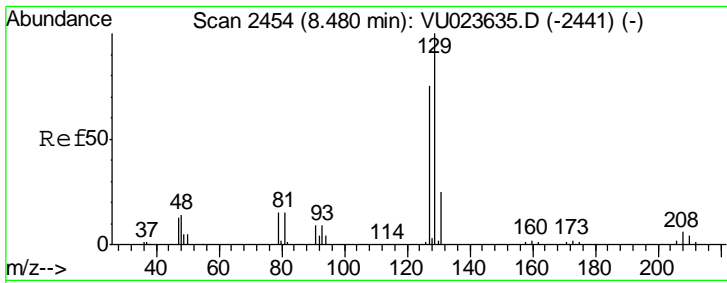
#48
 2-Hexanone
 Concen: 2.99 ug/L
 RT: 8.32 min Scan# 2404
 Delta R.T. -0.05 min
 Lab File: VU023645.D
 Acq: 04 May 2018 21:53

Tgt Ion	Resp	Lower	Upper
43	100		
58	29.6	42.1	63.1#
57	37.6	14.3	21.5#
100	2.8	7.8	11.8#



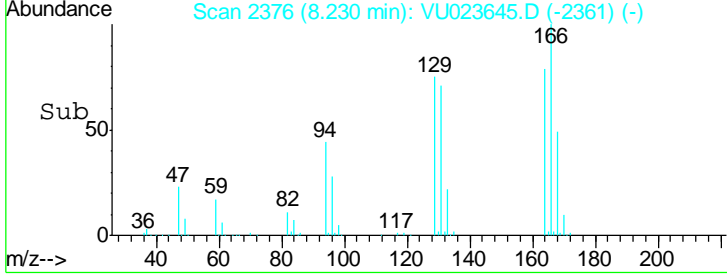
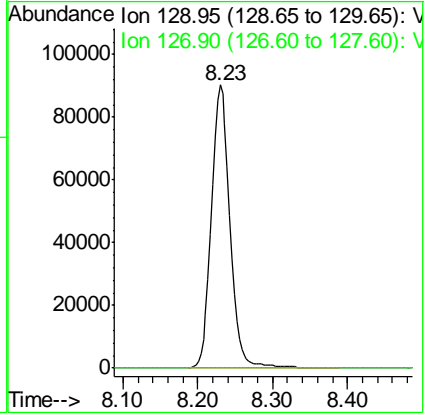
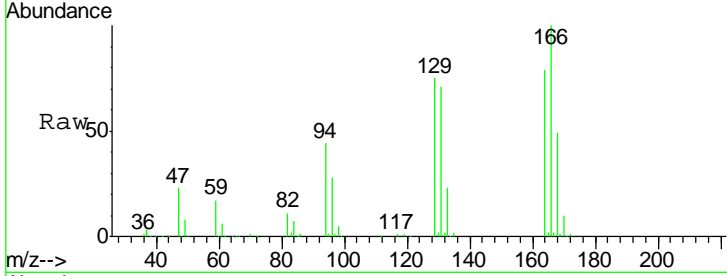
Abundance Ion 43.05 (42.75 to 43.75): VU
 Ion 58.05 (57.75 to 58.75): VU
 Ion 57.20 (56.90 to 57.90): VU
 Ion 100.15 (99.85 to 100.85): VU





#49
 Dibromochloromethane
 Concen: 17.50 ug/L
 RT: 8.23 min Scan# 2376
 Delta R.T. -0.25 min
 Lab File: VU023645.D
 Acq: 04 May 2018 21:53

Tgt Ion: 129 Resp: 156121
 Ion Ratio Lower Upper
 129 100
 127 0.0 56.9 105.7#



#59
 1,2,3-Trichloropropane
 Concen: 1.11 ug/L
 RT: 11.49 min Scan# 3390
 Delta R.T. 0.99 min
 Lab File: VU023645.D
 Acq: 04 May 2018 21:53

Tgt Ion: 75 Resp: 8111
 Ion Ratio Lower Upper
 75 100
 77 34.9 26.0 39.0

