

Data Path : Z:\voasrv\HPCHEM1\MSVOA_U\Data\VU050421\
 Data File : VU043520.D
 Acq On : 04 May 2021 14:35
 Operator : SY/MD
 Sample : M2195-14
 Misc : 25.0mL/MSVOA_U/WATER
 ALS Vial : 15 Sample Multiplier: 1

Instrument :
 MSVOA_U
 ClientSampleId :
 GB3J4

Quant Time: May 05 04:57:17 2021
 Quant Method : Z:\voasrv\HPCHEM1\MSVOA_U\Method\SFAMUTR050321WMA.M
 Quant Title : TRACE VOA SFAM1.0
 QLast Update : Wed May 05 04:50:58 2021
 Response via : Initial Calibration

Compound	R.T.	QIon	Response	Conc	Units	Dev(Min)

Internal Standards						
1) 1,4-Difluorobenzene	6.259	114	87075	5.00	ug/L	0.00
28) Chlorobenzene-d5	9.427	117	89418	5.00	ug/L	0.00
58) 1,4-Dichlorobenzene-d4	11.819	152	40923	5.00	ug/L	0.00
System Monitoring Compounds						
4) Vinyl Chloride-d3	1.600	65	29804	4.25	ug/L	0.00
Spiked Amount	5.000	Range 40 - 130	Recovery	=	85.00%	
7) Chloroethane-d5	1.916	69	24573	4.79	ug/L	0.00
Spiked Amount	5.000	Range 65 - 130	Recovery	=	95.80%	
11) 1,1-Dichloroethene-d2	2.571	65	15196	4.42	ug/L	0.00
Spiked Amount	5.000	Range 60 - 125	Recovery	=	88.40%	
20) 2-Butanone-d5	4.636	46	114146	52.51	ug/L	-0.02
Spiked Amount	50.000	Range 40 - 130	Recovery	=	105.02%	
24) Chloroform-d	5.073	84	63495	4.74	ug/L	0.00
Spiked Amount	5.000	Range 70 - 125	Recovery	=	94.80%	
26) 1,2-Dichloroethane-d4	5.713	65	40367	5.00	ug/L	0.00
Spiked Amount	5.000	Range 70 - 130	Recovery	=	100.00%	
32) Benzene-d6	5.735	84	115665	4.79	ug/L	0.00
Spiked Amount	5.000	Range 70 - 125	Recovery	=	95.80%	
36) 1,2-Dichloropropane-d6	6.700	67	41887	4.94	ug/L	0.00
Spiked Amount	5.000	Range 60 - 140	Recovery	=	98.80%	
41) Toluene-d8	7.906	98	96608	4.35	ug/L	0.00
Spiked Amount	5.000	Range 70 - 130	Recovery	=	87.00%	
43) trans-1,3-Dichloroprop...	8.185	79	15987	4.67	ug/L	0.00
Spiked Amount	5.000	Range 55 - 130	Recovery	=	93.40%	
46) 2-Hexanone-d5	8.642	63	75483	52.59	ug/L	0.00
Spiked Amount	50.000	Range 45 - 130	Recovery	=	105.18%	
56) 1,1,2,2-Tetrachloroeth...	10.764	84	32796	4.82	ug/L	0.00
Spiked Amount	5.000	Range 65 - 120	Recovery	=	96.40%	
66) 1,2-Dichlorobenzene-d4	12.201	152	37332	5.11	ug/L	0.00
Spiked Amount	5.000	Range 80 - 120	Recovery	=	102.20%	
Target Compounds						
3) Chloromethane	1.523	50	615	0.10	ug/L #	65
13) Acetone	2.639	43	11704	8.07	ug/L	94
14) Carbon disulfide	2.800	76	2111	0.17	ug/L #	92
15) Methyl Acetate	2.954	43	425	0.13	ug/L #	58
16) Methylene chloride	3.054	84	1406	0.18	ug/L	97
21) 2-Butanone	4.723	43	6185	2.66	ug/L	86
27) 1,2-Dichloroethane	5.735	62	659	0.08	ug/L #	78
30) Cyclohexane	5.398	56	1517	0.18	ug/L	97
33) Benzene	5.787	78	7318	0.31	ug/L	100
35) Methylcyclohexane	6.774	83	2419	0.31	ug/L	92
37) 1,2-Dichloropropane	6.700	63	4675	0.67	ug/L #	90
39) cis-1,3-Dichloropropene	7.578	75	1206	0.13	ug/L #	65
42) Toluene	7.976	91	14190	0.58	ug/L	95
47) Tetrachloroethene	8.562	164	114998	25.95	ug/L	97
48) 2-Hexanone	8.690	43	4251	1.00	ug/L #	94
49) Dibromochloromethane	8.562	129	106747	18.17	ug/L #	12
52) Ethylbenzene	9.578	91	4589	0.18	ug/L	96
53) m,p-Xylene	9.703	106	2938	0.31	ug/L	97
54) o-Xylene	10.108	106	985	0.11	ug/L	98
62) 1,3,5-Trimethylbenzene	11.478	105	3323	0.19	ug/L	97

Data Path : Z:\voasrv\HPCHEM1\MSVOA_U\Data\VU050421\
Data File : VU043520.D
Acq On : 04 May 2021 14:35
Operator : SY/MD
Sample : M2195-14
Misc : 25.0mL/MSVOA_U/WATER
ALS Vial : 15 Sample Multiplier: 1

Instrument :
MSVOA_U
ClientSampleId :
GB3J4

Quant Time: May 05 04:57:17 2021
Quant Method : Z:\voasrv\HPCHEM1\MSVOA_U\Method\SFAMUTR050321WMA.M
Quant Title : TRACE VOA SFAM1.0
QLast Update : Wed May 05 04:50:58 2021
Response via : Initial Calibration

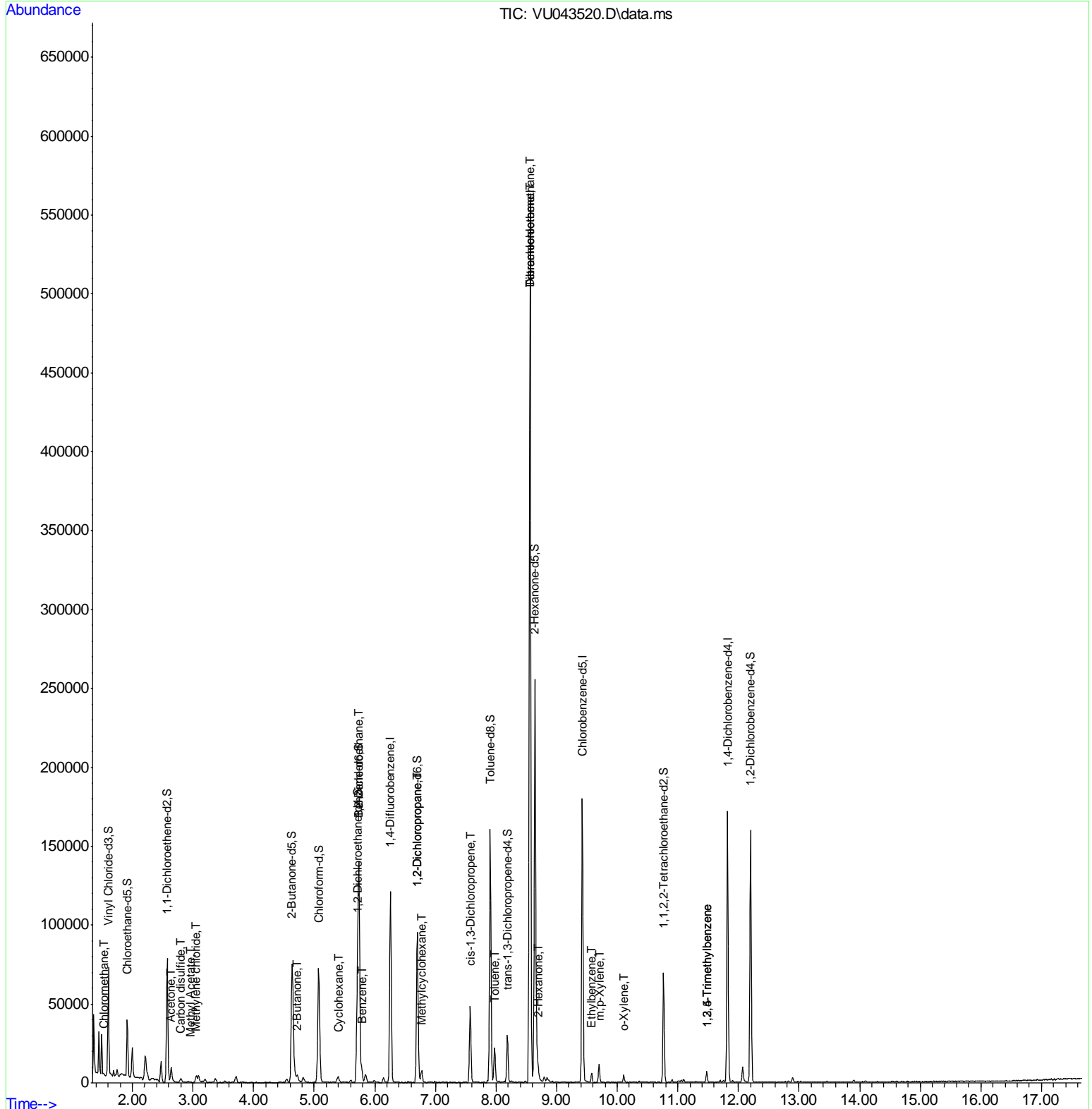
Compound	R.T.	QIon	Response	Conc Units	Dev(Min)
63) 1,2,4-Trimethylbenzene	11.478	105	3323	0.19 ug/L	95

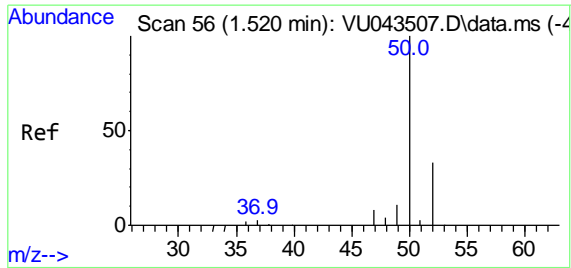
(#) = qualifier out of range (m) = manual integration (+) = signals summed

Data Path : Z:\voasrv\HPCHEM1\MSVOA_U\Data\VU050421\
 Data File : VU043520.D
 Acq On : 04 May 2021 14:35
 Operator : SY/MD
 Sample : M2195-14
 Misc : 25.0mL/MSVOA_U/WATER
 ALS Vial : 15 Sample Multiplier: 1

Instrument :
 MSVOA_U
 ClientSampled :
 GB3J4

Quant Time: May 05 04:57:17 2021
 Quant Method : Z:\voasrv\HPCHEM1\MSVOA_U\Method\SFAMUTR050321WMA.M
 Quant Title : TRACE VOA SFAM1.0
 QLast Update : Wed May 05 04:50:58 2021
 Response via : Initial Calibration

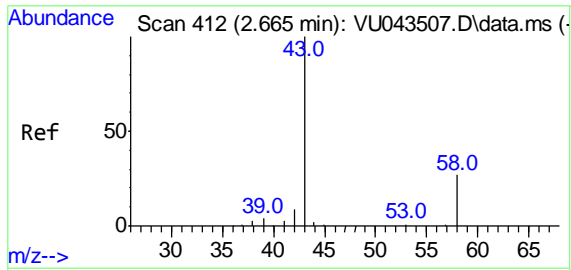
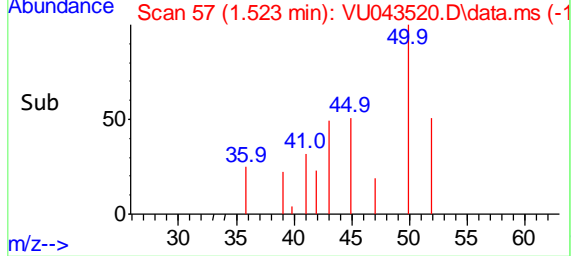
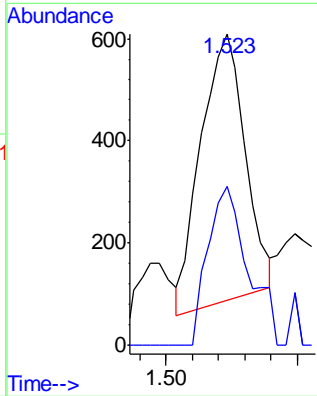
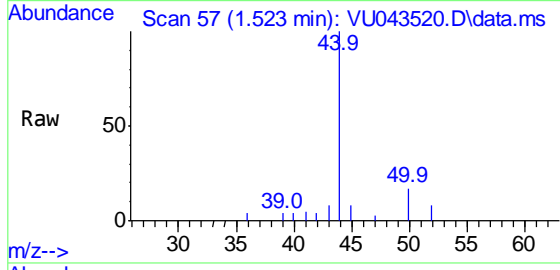




#3
 Chloromethane
 Concen: 0.10 ug/L
 RT: 1.523 min Scan# 57
 Delta R.T. 0.003 min
 Lab File: VU043520.D
 Acq: 04 May 2021 14:35

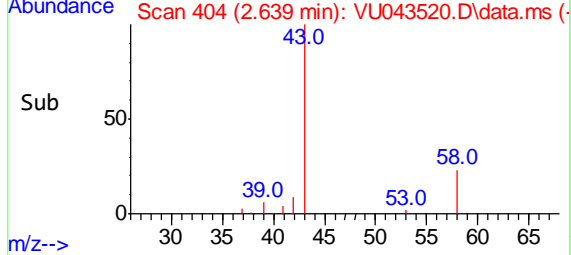
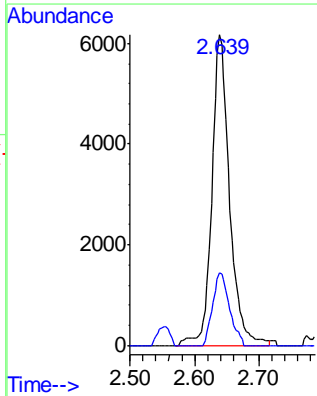
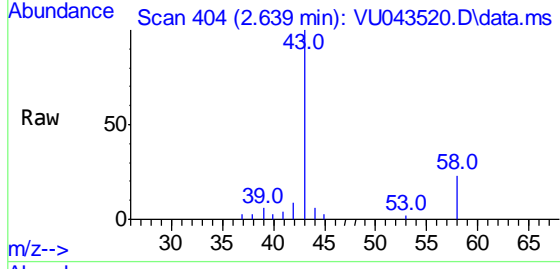
Instrument :
 MSVOA_U
ClientSampled :
 GB3J4

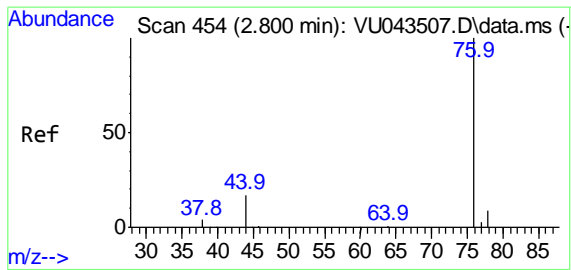
Tgt Ion: 50 Resp: 615
 Ion Ratio Lower Upper
 50 100
 52 51.1 22.1 41.1#



#13
 Acetone
 Concen: 8.07 ug/L
 RT: 2.639 min Scan# 404
 Delta R.T. -0.026 min
 Lab File: VU043520.D
 Acq: 04 May 2021 14:35

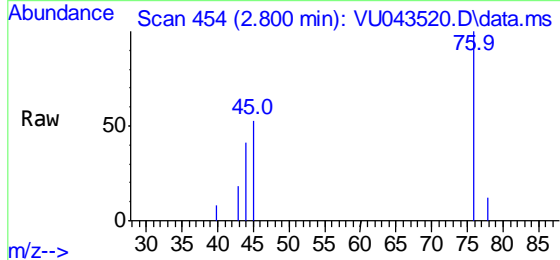
Tgt Ion: 43 Resp: 11704
 Ion Ratio Lower Upper
 43 100
 58 22.1 0.0 50.8



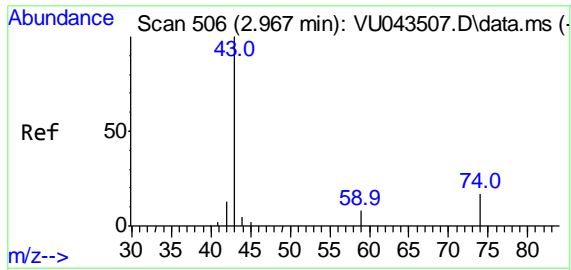
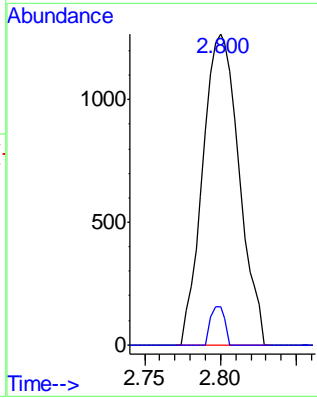
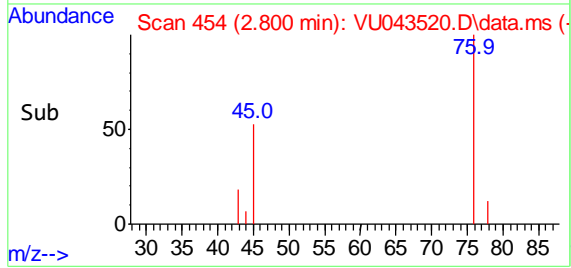


#14
 Carbon disulfide
 Concen: 0.17 ug/L
 RT: 2.800 min Scan# 454
 Delta R.T. -0.000 min
 Lab File: VU043520.D
 Acq: 04 May 2021 14:35

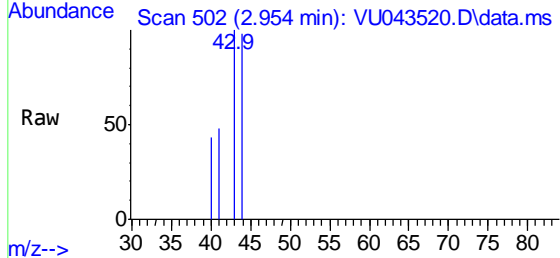
Instrument :
 MSVOA_U
 ClientSampled :
 GB3J4



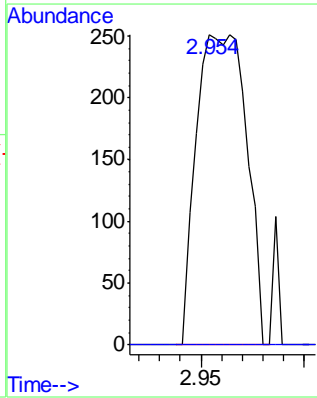
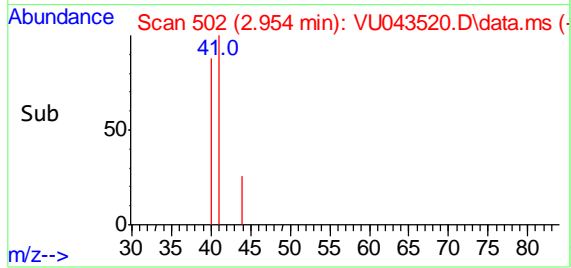
Tgt Ion: 76 Resp: 2111
 Ion Ratio Lower Upper
 76 100
 78 12.1 7.4 11.2#

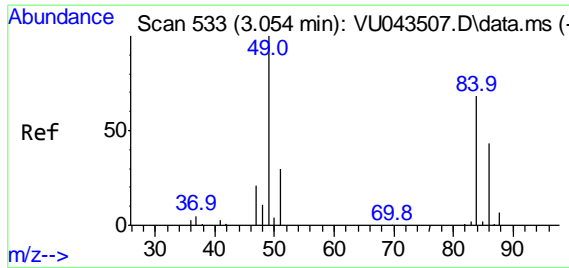


#15
 Methyl Acetate
 Concen: 0.13 ug/L
 RT: 2.954 min Scan# 502
 Delta R.T. -0.013 min
 Lab File: VU043520.D
 Acq: 04 May 2021 14:35



Tgt Ion: 43 Resp: 425
 Ion Ratio Lower Upper
 43 100
 74 0.0 15.2 22.8#



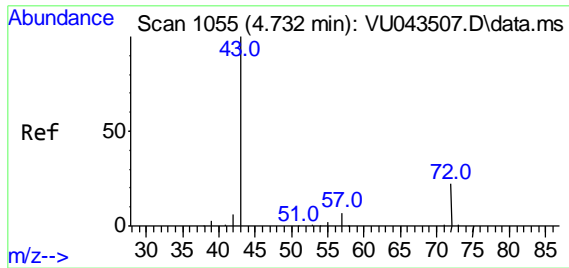
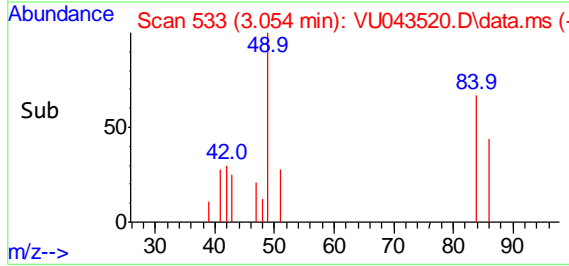
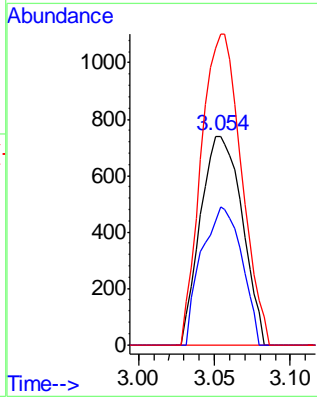
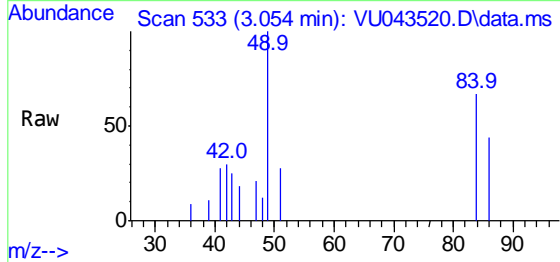


#16
 Methylene chloride
 Concen: 0.18 ug/L
 RT: 3.054 min Scan# 533
 Delta R.T. -0.000 min
 Lab File: VU043520.D
 Acq: 04 May 2021 14:35

Instrument :
 MSVOA_U
 ClientSampled :
 GB3J4

Tgt Ion: 84 Resp: 1406

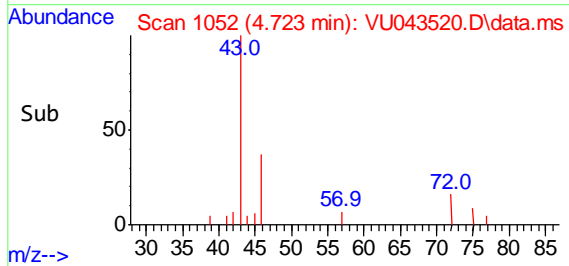
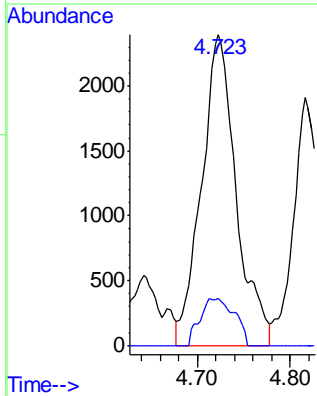
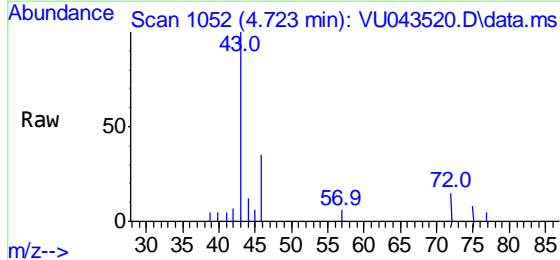
Ion	Ratio	Lower	Upper
84	100		
86	65.8	45.6	84.6
49	148.8	107.0	198.8

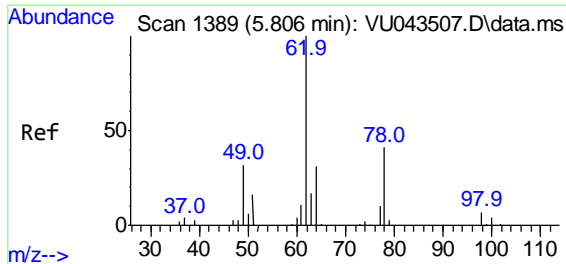


#21
 2-Butanone
 Concen: 2.66 ug/L
 RT: 4.723 min Scan# 1052
 Delta R.T. -0.010 min
 Lab File: VU043520.D
 Acq: 04 May 2021 14:35

Tgt Ion: 43 Resp: 6185

Ion	Ratio	Lower	Upper
43	100		
72	15.1	10.8	32.4

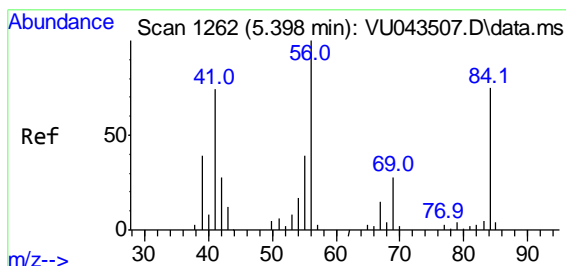
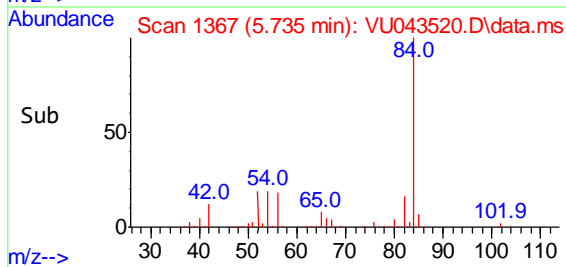
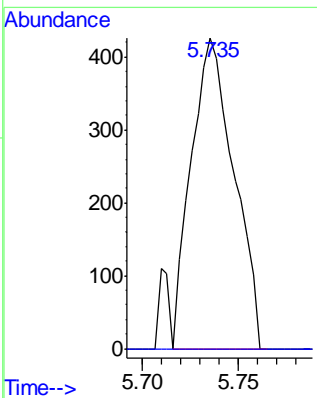
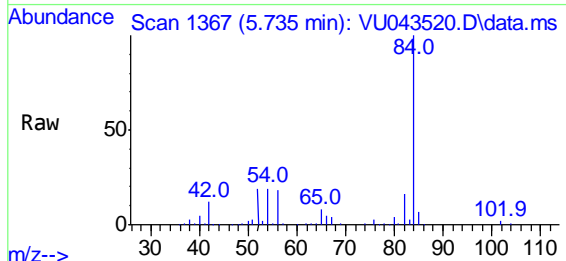




#27
 1,2-Dichloroethane
 Concen: 0.08 ug/L
 RT: 5.735 min Scan# 1367
 Delta R.T. -0.071 min
 Lab File: VU043520.D
 Acq: 04 May 2021 14:35

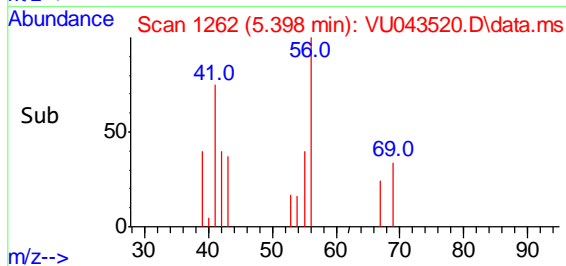
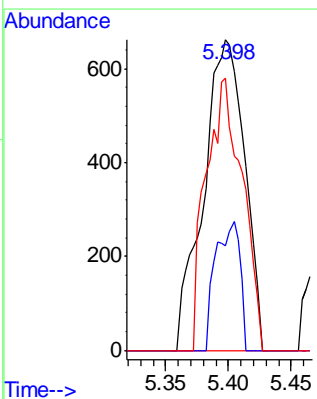
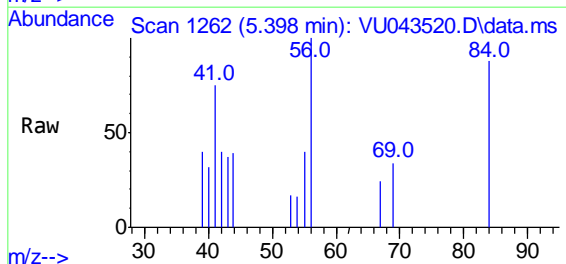
Instrument :
 MSVOA_U
 ClientSampled :
 GB3J4

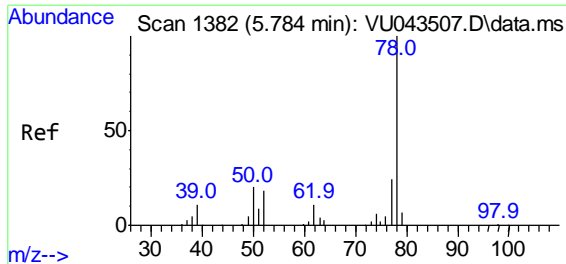
Tgt Ion: 62 Resp: 659
 Ion Ratio Lower Upper
 62 100
 98 0.0 6.1 9.1#



#30
 Cyclohexane
 Concen: 0.18 ug/L
 RT: 5.398 min Scan# 1262
 Delta R.T. -0.000 min
 Lab File: VU043520.D
 Acq: 04 May 2021 14:35

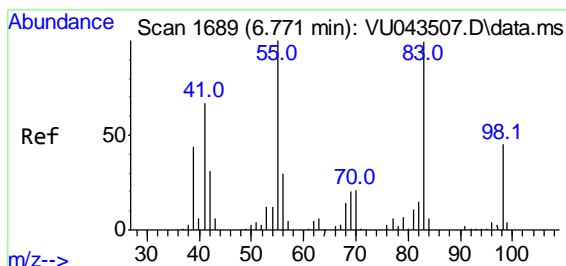
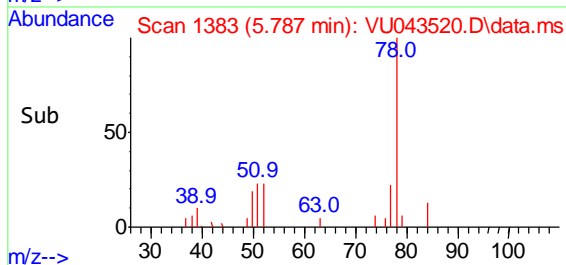
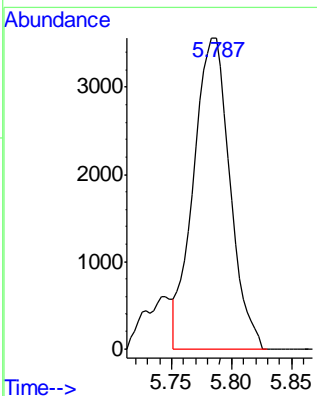
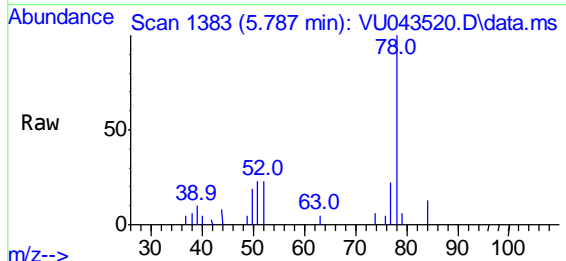
Tgt Ion: 56 Resp: 1517
 Ion Ratio Lower Upper
 56 100
 69 24.6 23.0 34.4
 84 76.9 60.3 90.5



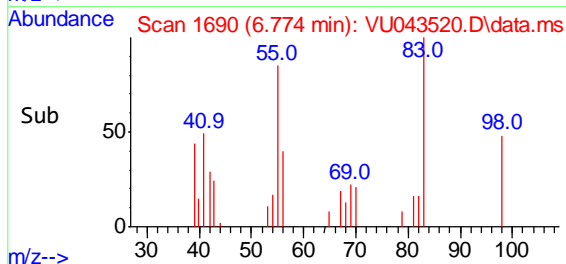
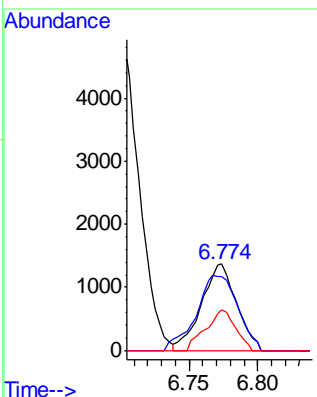
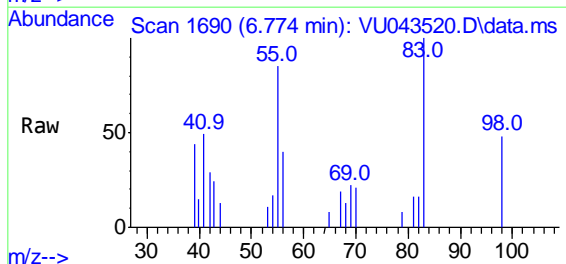


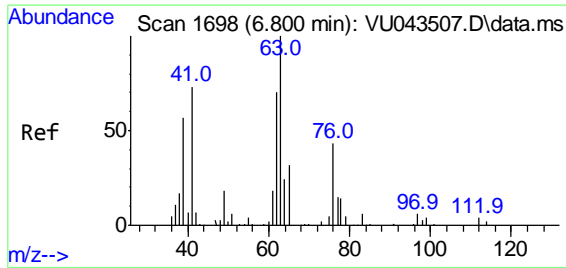
#33
Benzene
Concen: 0.31 ug/L
RT: 5.787 min Scan# 1383
Delta R.T. 0.003 min
Lab File: VU043520.D
Acq: 04 May 2021 14:35
Tgt Ion: 78 Resp: 7318

Instrument :
MSVOA_U
ClientSampled :
GB3J4



#35
Methylcyclohexane
Concen: 0.31 ug/L
RT: 6.774 min Scan# 1690
Delta R.T. 0.003 min
Lab File: VU043520.D
Acq: 04 May 2021 14:35
Tgt Ion: 83 Resp: 2419
Ion Ratio Lower Upper
83 100
55 102.3 75.8 113.8
98 39.4 35.5 53.3

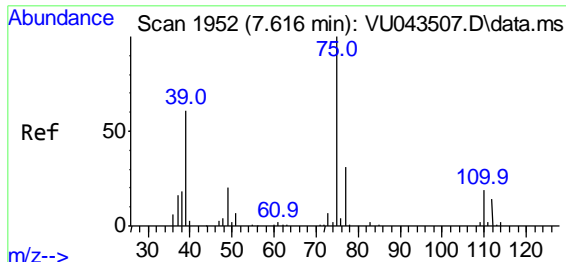
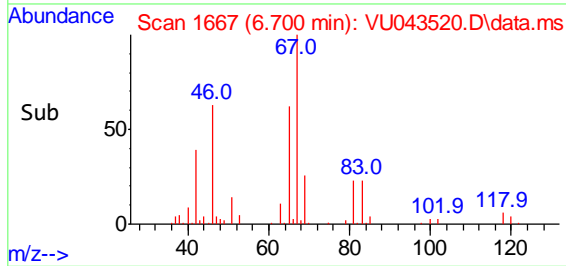
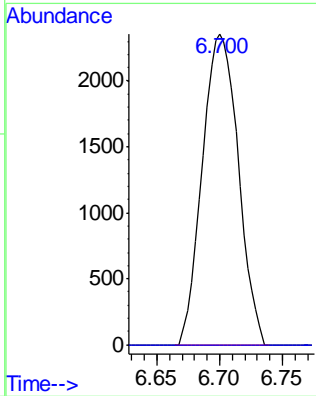
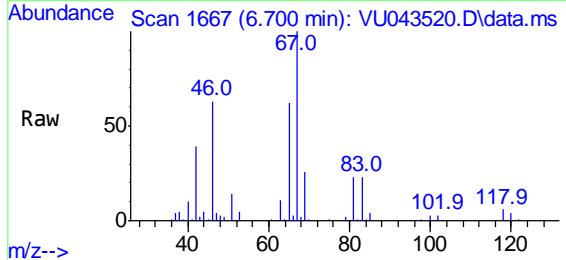




#37
 1,2-Dichloropropane
 Concen: 0.67 ug/L
 RT: 6.700 min Scan# 1667
 Delta R.T. -0.100 min
 Lab File: VU043520.D
 Acq: 04 May 2021 14:35

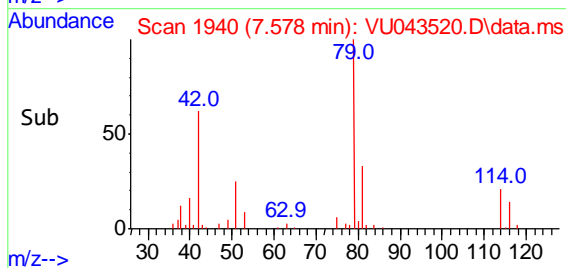
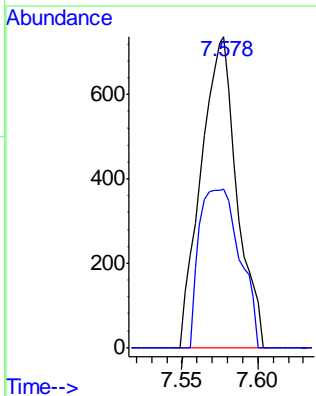
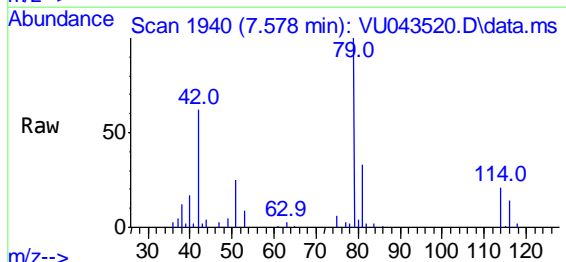
Instrument :
 MSVOA_U
 ClientSampled :
 GB3J4

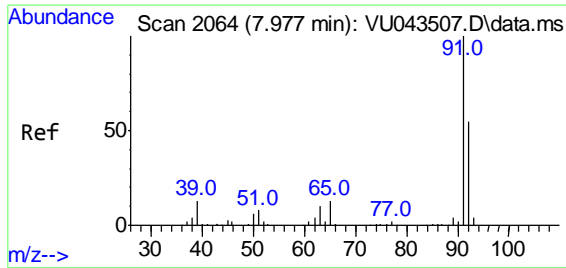
Tgt Ion: 63 Resp: 4675
 Ion Ratio Lower Upper
 63 100
 112 0.0 2.6 3.8#



#39
 cis-1,3-Dichloropropene
 Concen: 0.13 ug/L
 RT: 7.578 min Scan# 1940
 Delta R.T. -0.039 min
 Lab File: VU043520.D
 Acq: 04 May 2021 14:35

Tgt Ion: 75 Resp: 1206
 Ion Ratio Lower Upper
 75 100
 77 50.9 21.9 40.7#

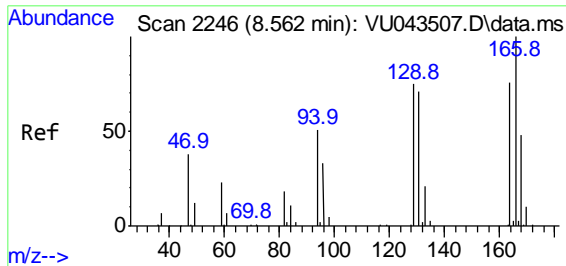
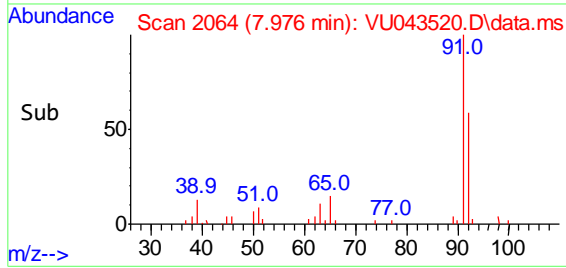
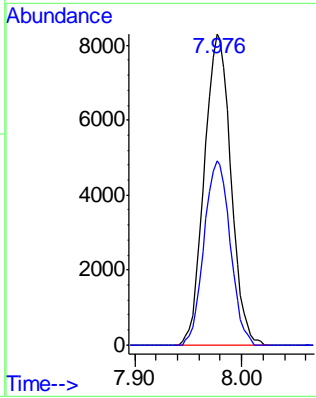
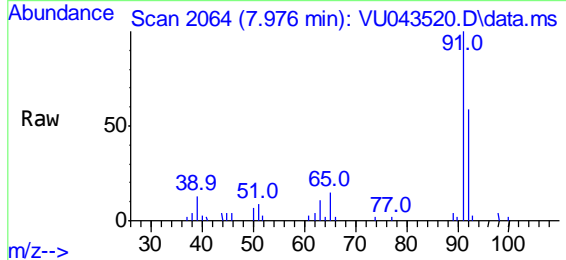




#42
 Toluene
 Concen: 0.58 ug/L
 RT: 7.976 min Scan# 2064
 Delta R.T. -0.000 min
 Lab File: VU043520.D
 Acq: 04 May 2021 14:35

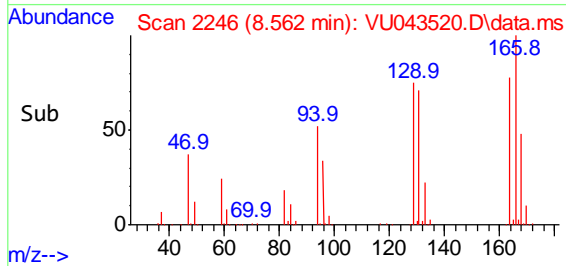
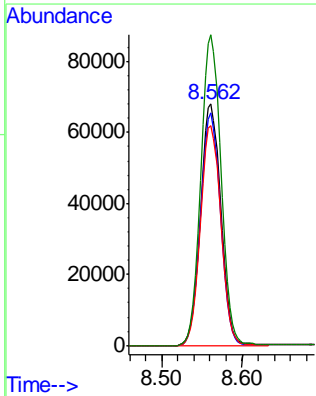
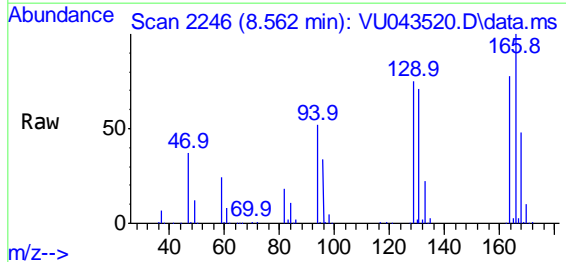
Instrument :
 MSVOA_U
 ClientSampled :
 GB3J4

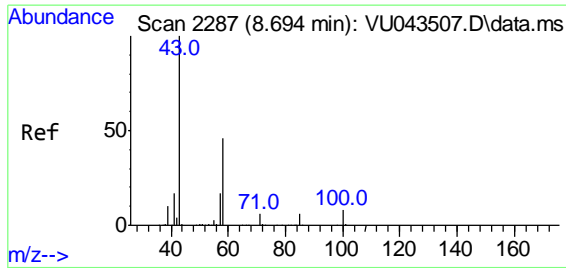
Tgt Ion: 91 Resp: 14190
 Ion Ratio Lower Upper
 91 100
 92 59.4 39.1 72.5



#47
 Tetrachloroethene
 Concen: 25.95 ug/L
 RT: 8.562 min Scan# 2246
 Delta R.T. -0.000 min
 Lab File: VU043520.D
 Acq: 04 May 2021 14:35

Tgt Ion:164 Resp: 114998
 Ion Ratio Lower Upper
 164 100
 129 96.5 62.5 116.1
 131 91.2 64.9 120.5
 166 128.9 89.0 165.2



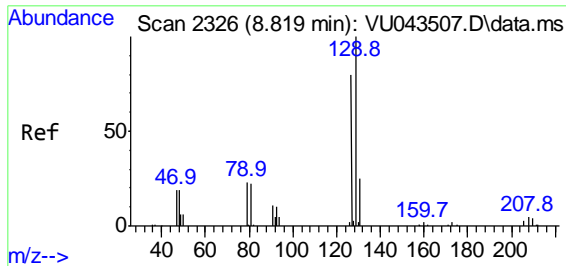
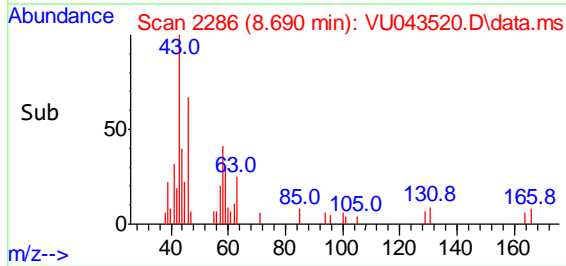
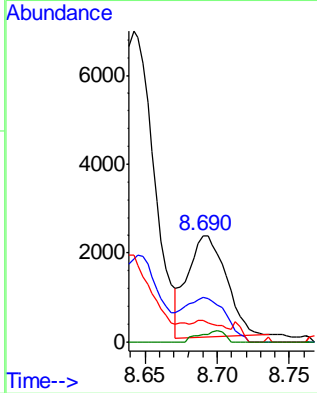
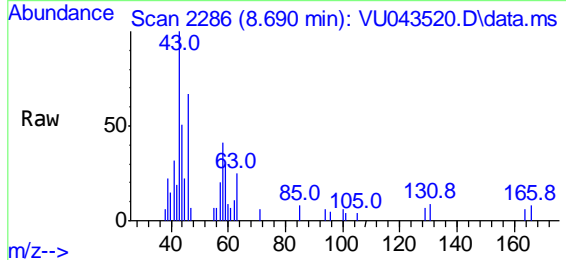


#48
 2-Hexanone
 Concen: 1.00 ug/L
 RT: 8.690 min Scan# 2286
 Delta R.T. -0.003 min
 Lab File: VU043520.D
 Acq: 04 May 2021 14:35

Instrument :
 MSVOA_U
Client Sampled :
 GB3J4

Tgt Ion: 43 Resp: 4251

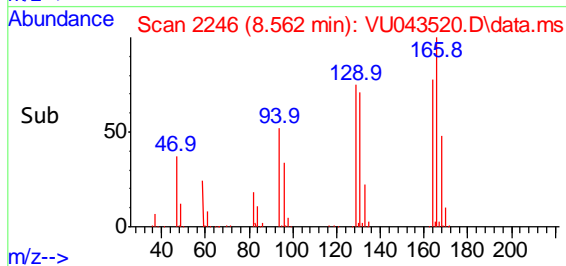
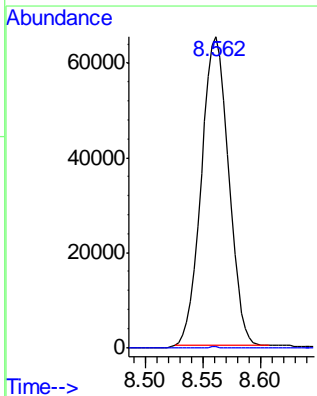
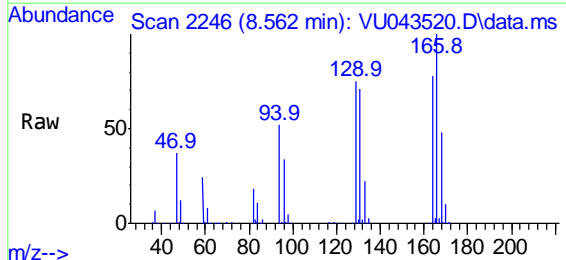
Ion	Ratio	Lower	Upper
43	100		
58	46.6	36.8	55.2
57	6.6	13.2	19.8#
100	6.9	6.5	9.7

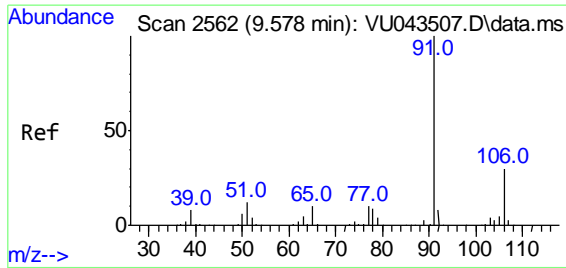


#49
 Dibromochloromethane
 Concen: 18.17 ug/L
 RT: 8.562 min Scan# 2246
 Delta R.T. -0.257 min
 Lab File: VU043520.D
 Acq: 04 May 2021 14:35

Tgt Ion: 129 Resp: 106747

Ion	Ratio	Lower	Upper
129	100		
127	0.2	52.4	97.4#

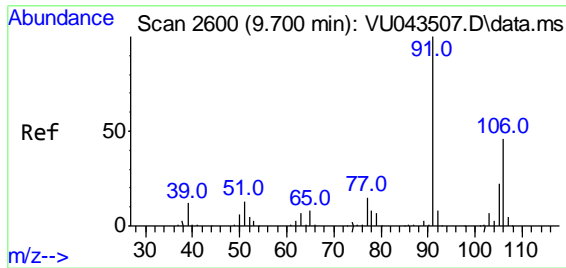
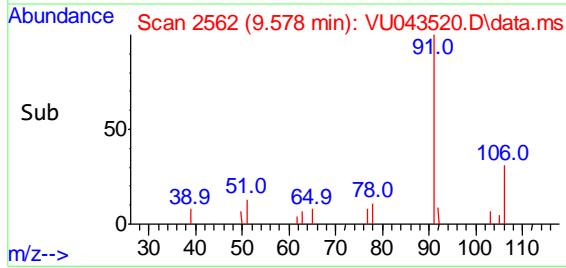
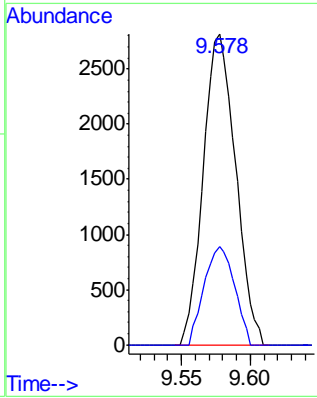
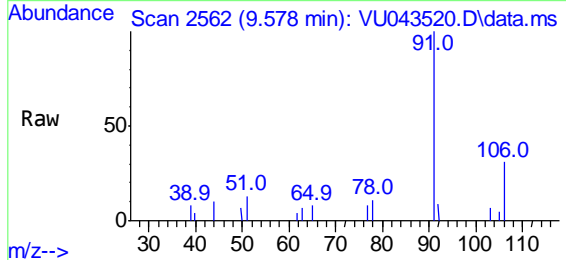




#52
 Ethylbenzene
 Concen: 0.18 ug/L
 RT: 9.578 min Scan# 2562
 Delta R.T. -0.000 min
 Lab File: VU043520.D
 Acq: 04 May 2021 14:35

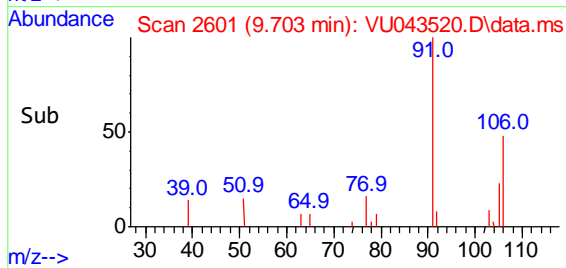
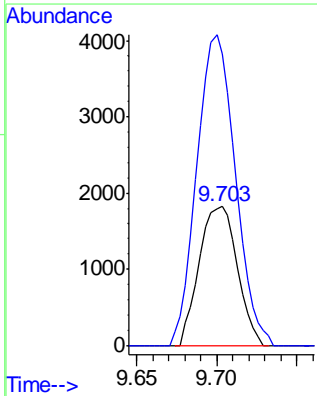
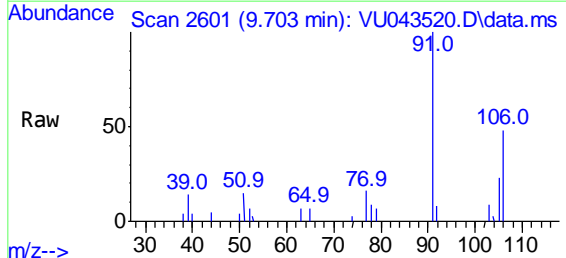
Instrument :
 MSVOA_U
ClientSampled :
 GB3J4

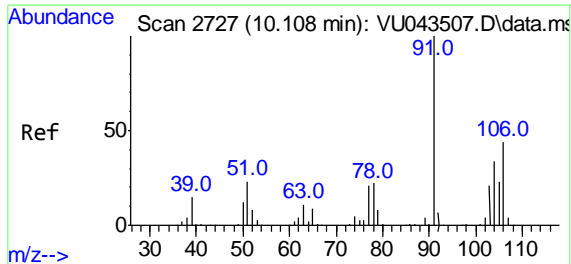
Tgt Ion: 91 Resp: 4589
 Ion Ratio Lower Upper
 91 100
 106 31.5 20.5 38.1



#53
 m,p-Xylene
 Concen: 0.31 ug/L
 RT: 9.703 min Scan# 2601
 Delta R.T. 0.003 min
 Lab File: VU043520.D
 Acq: 04 May 2021 14:35

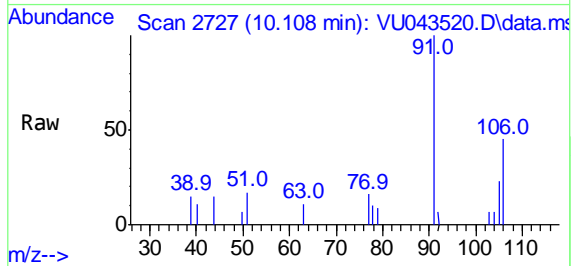
Tgt Ion:106 Resp: 2938
 Ion Ratio Lower Upper
 106 100
 91 210.2 150.3 279.1



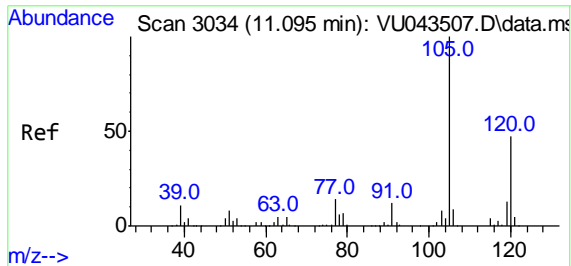
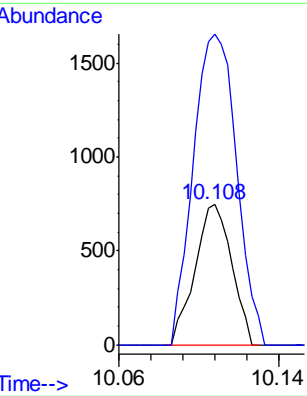
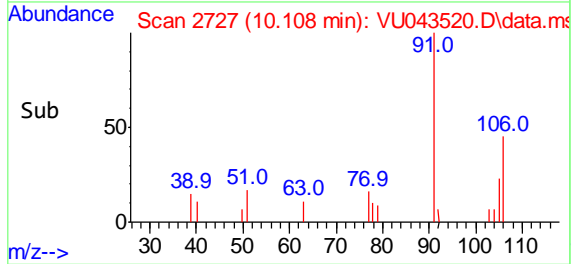


#54
 o-Xylene
 Concen: 0.11 ug/L
 RT: 10.108 min Scan# 2727
 Delta R.T. -0.000 min
 Lab File: VU043520.D
 Acq: 04 May 2021 14:35

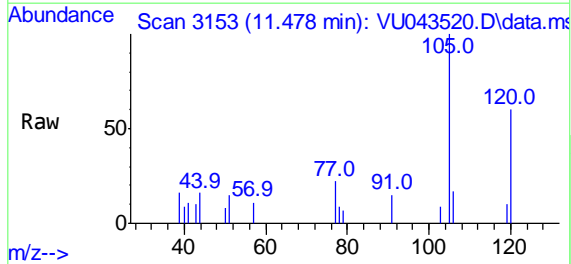
Instrument :
 MSVOA_U
ClientSampled :
 GB3J4



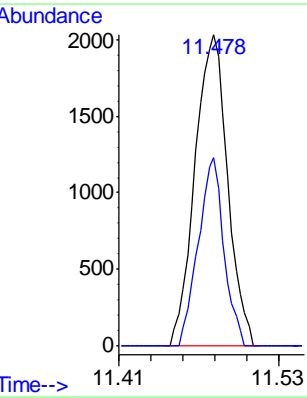
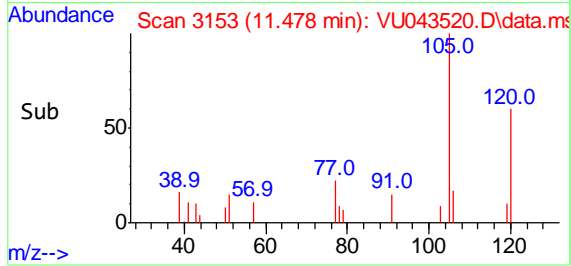
Tgt Ion:106 Resp: 985
 Ion Ratio Lower Upper
 106 100
 91 222.1 157.3 292.1

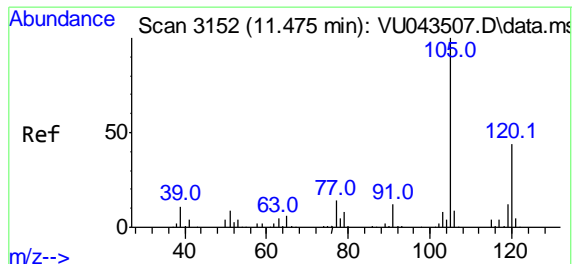


#62
 1,3,5-Trimethylbenzene
 Concen: 0.19 ug/L
 RT: 11.478 min Scan# 3153
 Delta R.T. 0.382 min
 Lab File: VU043520.D
 Acq: 04 May 2021 14:35



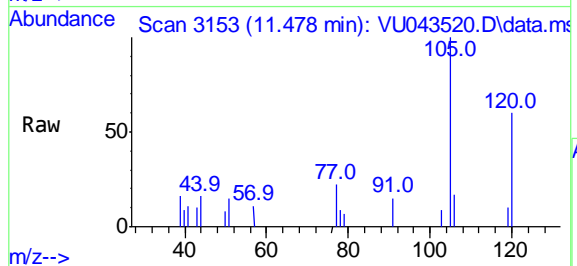
Tgt Ion:105 Resp: 3323
 Ion Ratio Lower Upper
 105 100
 120 47.5 36.6 55.0





#63
 1,2,4-Trimethylbenzene
 Concen: 0.19 ug/L
 RT: 11.478 min Scan# 3153
 Delta R.T. 0.003 min
 Lab File: VU043520.D
 Acq: 04 May 2021 14:35

Instrument :
 MSVOA_U
ClientSampled :
 GB3J4



Tgt Ion:105 Resp: 3323
 Ion Ratio Lower Upper
 105 100
 120 47.5 35.4 53.0

