

Data Path : Z:\voasrv\HPCHEM1\MSVOA_U\Data\VU050421\
 Data File : VU043542.D
 Acq On : 05 May 2021 08:36
 Operator : SY/MD
 Sample : VU0504WBL03
 Misc : 25.0mL/MSVOA_U/WATER
 ALS Vial : 39 Sample Multiplier: 1

Instrument :
 MSVOA_U
 ClientSampled :
 VBLK147

Quant Time: May 05 13:04:20 2021
 Quant Method : Z:\voasrv\HPCHEM1\MSVOA_U\Method\SFAMUTR050321WMA.M
 Quant Title : TRACE VOA SFAM1.0
 QLast Update : Wed May 05 08:11:40 2021
 Response via : Initial Calibration

Compound	R.T.	QIon	Response	Conc	Units	Dev(Min)

Internal Standards						
1) 1,4-Difluorobenzene	6.259	114	89327	5.00	ug/L	0.00
28) Chlorobenzene-d5	9.426	117	91324	5.00	ug/L	0.00
58) 1,4-Dichlorobenzene-d4	11.822	152	39972	5.00	ug/L	0.00
System Monitoring Compounds						
4) Vinyl Chloride-d3	1.600	65	30348	4.22	ug/L	0.00
Spiked Amount	5.000	Range 40 - 130	Recovery	=	84.40%	
7) Chloroethane-d5	1.919	69	23227	4.41	ug/L	0.00
Spiked Amount	5.000	Range 65 - 130	Recovery	=	88.20%	
11) 1,1-Dichloroethene-d2	2.571	65	15627	4.43	ug/L	0.00
Spiked Amount	5.000	Range 60 - 125	Recovery	=	88.60%	
20) 2-Butanone-d5	4.649	46	98320	44.09	ug/L	0.00
Spiked Amount	50.000	Range 40 - 130	Recovery	=	88.18%	
24) Chloroform-d	5.076	84	61600	4.48	ug/L	0.00
Spiked Amount	5.000	Range 70 - 125	Recovery	=	89.60%	
26) 1,2-Dichloroethane-d4	5.713	65	38597	4.66	ug/L	0.00
Spiked Amount	5.000	Range 70 - 130	Recovery	=	93.20%	
32) Benzene-d6	5.738	84	109617	4.44	ug/L	0.00
Spiked Amount	5.000	Range 70 - 125	Recovery	=	88.80%	
36) 1,2-Dichloropropane-d6	6.700	67	39239	4.53	ug/L	0.00
Spiked Amount	5.000	Range 60 - 140	Recovery	=	90.60%	
41) Toluene-d8	7.906	98	90535	3.99	ug/L	0.00
Spiked Amount	5.000	Range 70 - 130	Recovery	=	79.80%	
43) trans-1,3-Dichloroprop...	8.189	79	15113	4.32	ug/L	0.00
Spiked Amount	5.000	Range 55 - 130	Recovery	=	86.40%	
46) 2-Hexanone-d5	8.645	63	66460	45.34	ug/L	0.00
Spiked Amount	50.000	Range 45 - 130	Recovery	=	90.68%	
56) 1,1,2,2-Tetrachloroeth...	10.764	84	30990	4.46	ug/L	0.00
Spiked Amount	5.000	Range 65 - 120	Recovery	=	89.20%	
66) 1,2-Dichlorobenzene-d4	12.201	152	33401	4.68	ug/L	0.00
Spiked Amount	5.000	Range 80 - 120	Recovery	=	93.60%	

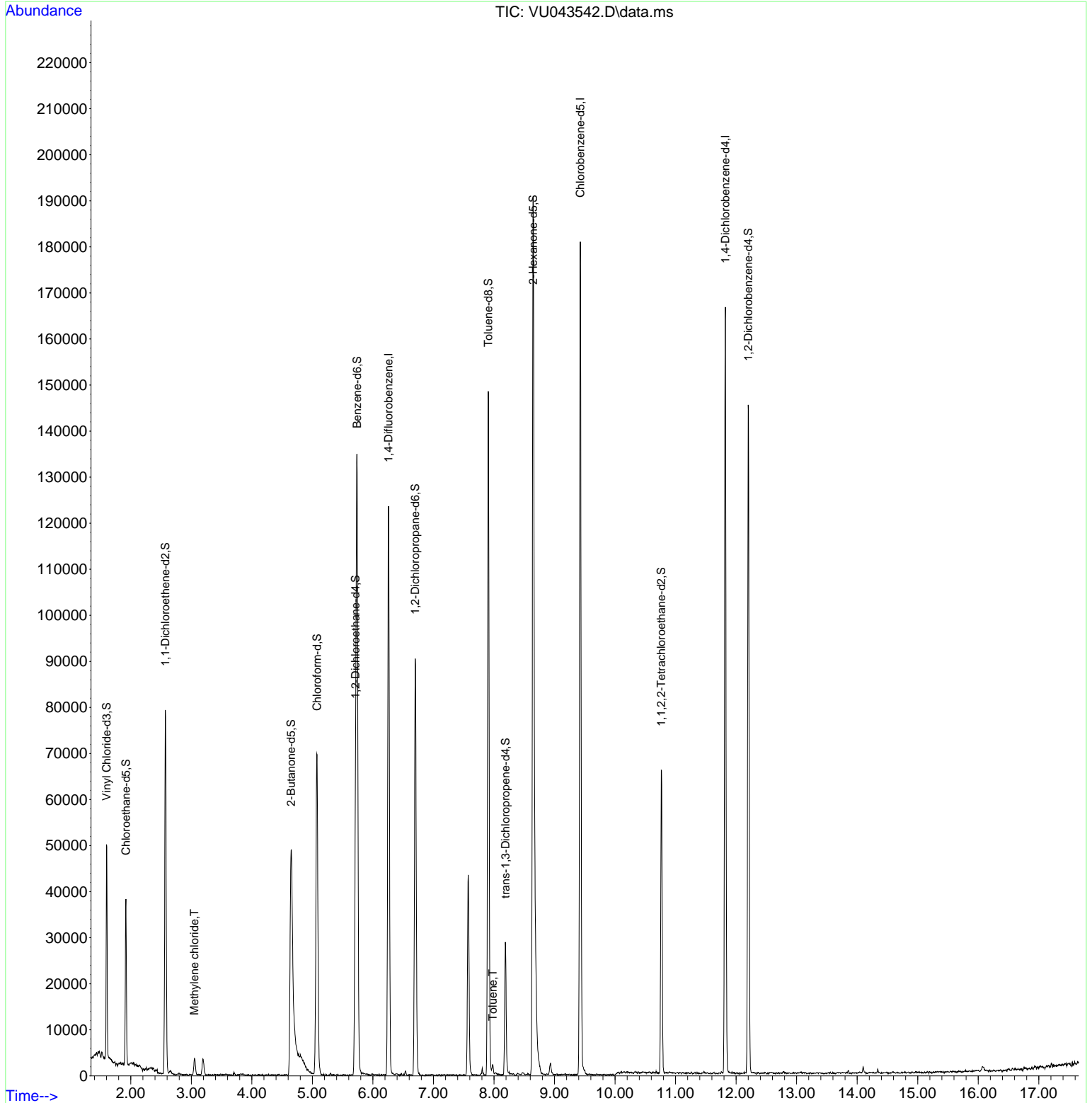
Target Compounds						Qvalue
16) Methylene chloride	3.050	84	1545	0.19	ug/L	93
42) Toluene	7.980	91	1576	0.06	ug/L	88

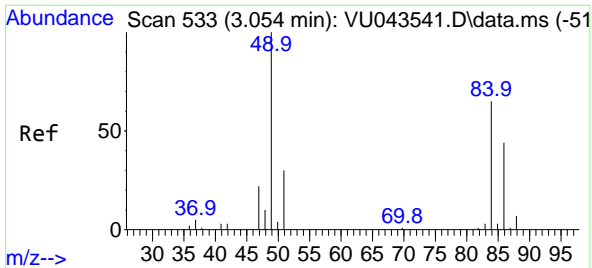
(#) = qualifier out of range (m) = manual integration (+) = signals summed

Data Path : Z:\voasrv\HPCHEM1\MSVOA_U\Data\VU050421\
 Data File : VU043542.D
 Acq On : 05 May 2021 08:36
 Operator : SY/MD
 Sample : VU0504WBL03
 Misc : 25.0mL/MSVOA_U/WATER
 ALS Vial : 39 Sample Multiplier: 1

Instrument :
 MSVOA_U
 ClientSampled :
 VBLK147

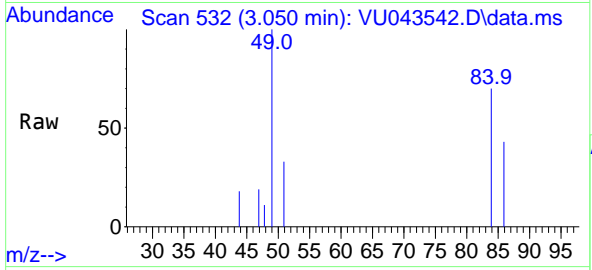
Quant Time: May 05 13:04:20 2021
 Quant Method : Z:\voasrv\HPCHEM1\MSVOA_U\Method\SFAMUTR050321WMA.M
 Quant Title : TRACE VOA SFAM1.0
 QLast Update : Wed May 05 08:11:40 2021
 Response via : Initial Calibration





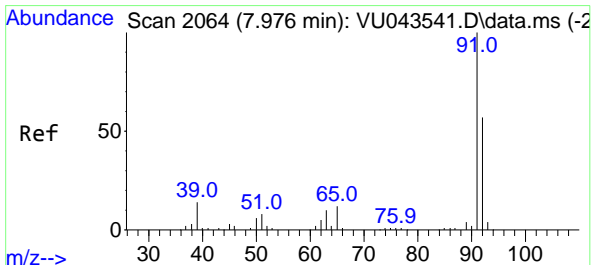
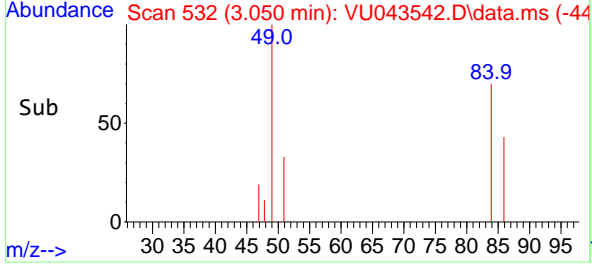
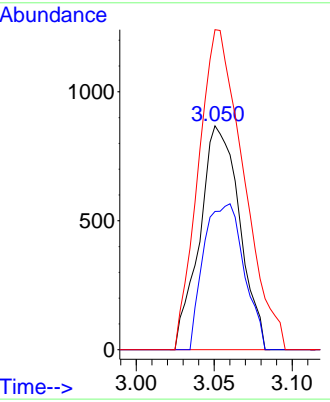
#16
 Methylene chloride
 Concen: 0.19 ug/L
 RT: 3.050 min Scan# 532
 Delta R.T. -0.003 min
 Lab File: VU043542.D
 Acq: 05 May 2021 08:36

Instrument :
 MSVOA_U
ClientSampled :
 VBLK147

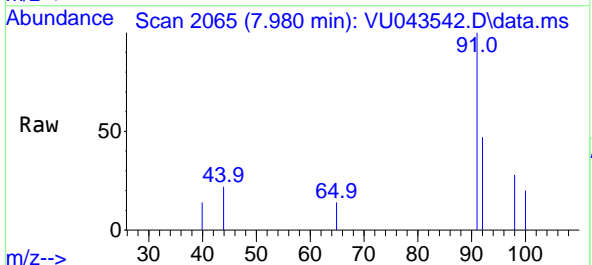


Tgt Ion: 84 Resp: 1545

Ion	Ratio	Lower	Upper
84	100		
86	61.8	45.6	84.6
49	143.0	107.0	198.8



#42
 Toluene
 Concen: 0.06 ug/L
 RT: 7.980 min Scan# 2065
 Delta R.T. 0.003 min
 Lab File: VU043542.D
 Acq: 05 May 2021 08:36



Tgt Ion: 91 Resp: 1576

Ion	Ratio	Lower	Upper
91	100		
92	46.8	39.1	72.5

