

Data Path : Z:\voasrv\HPCHEM1\MSVOA_U\Data\VU050421\
 Data File : VU043527.D
 Acq On : 04 May 2021 18:10
 Operator : SY/MD
 Sample : M2195-09
 Misc : 25.0mL/MSVOA_U/WATER
 ALS Vial : 24 Sample Multiplier: 1

Instrument :
 MSVOA_U
 ClientSampleId :
 GB3H7

Integration Parameters: rteint.p
 Integrator: RTE
 Smoothing : ON Filtering: 5
 Sampling : 1 Min Area: 3 % of largest Peak
 Start Thrs: 0.1 Max Peaks: 100
 Stop Thrs : 0 Peak Location: TOP

If leading or trailing edge < 100 prefer < Baseline drop else tangent >
 Peak separation: 5

Method : Z:\voasrv\HPCHEM1\MSVOA_U\Method\SFAMUTR050321WMA.M
 Title : TRACE VOA SFAM1.0

Signal : TIC: VU043527.D\data.ms

peak #	R.T. min	first scan	max scan	last scan	PK TY	peak height	corr. area	corr. % max.	% of total
1	1.597	69	80	95	rBV2	43778	63443	13.52%	2.079%
2	1.694	103	110	123	rBV	3416	6923	1.48%	0.227%
3	1.916	171	179	189	rBV	34033	42124	8.98%	1.381%
4	2.568	369	382	396	rBV	72037	116224	24.77%	3.809%
5	4.456	955	969	983	rVB4	2767	6223	1.33%	0.204%
6	4.658	1015	1032	1073	rBV2	50279	201388	42.92%	6.601%
7	4.822	1074	1083	1102	rVB2	7607	20620	4.39%	0.676%
8	5.076	1143	1162	1187	rBV2	71983	191178	40.75%	6.266%
9	5.735	1344	1367	1387	rBV2	129416	338524	72.15%	11.095%
10	6.256	1513	1529	1552	rBV	114005	216772	46.20%	7.105%
11	6.700	1653	1667	1685	rBV	86289	166625	35.51%	5.461%
12	7.575	1924	1939	1954	rBV	43290	75470	16.09%	2.474%
13	7.906	2024	2042	2057	rBV	140160	240548	51.27%	7.884%
14	8.189	2117	2130	2146	rBV2	27129	46354	9.88%	1.519%
15	8.645	2259	2272	2305	rBV	233360	469184	100.00%	15.378%
16	9.427	2503	2515	2530	rBV	169779	279744	59.62%	9.169%
17	10.764	2919	2931	2946	rVB	68467	109145	23.26%	3.577%
18	11.819	3248	3259	3276	rBV	153955	240291	51.21%	7.876%
19	12.201	3366	3378	3393	rBV	138840	220244	46.94%	7.219%

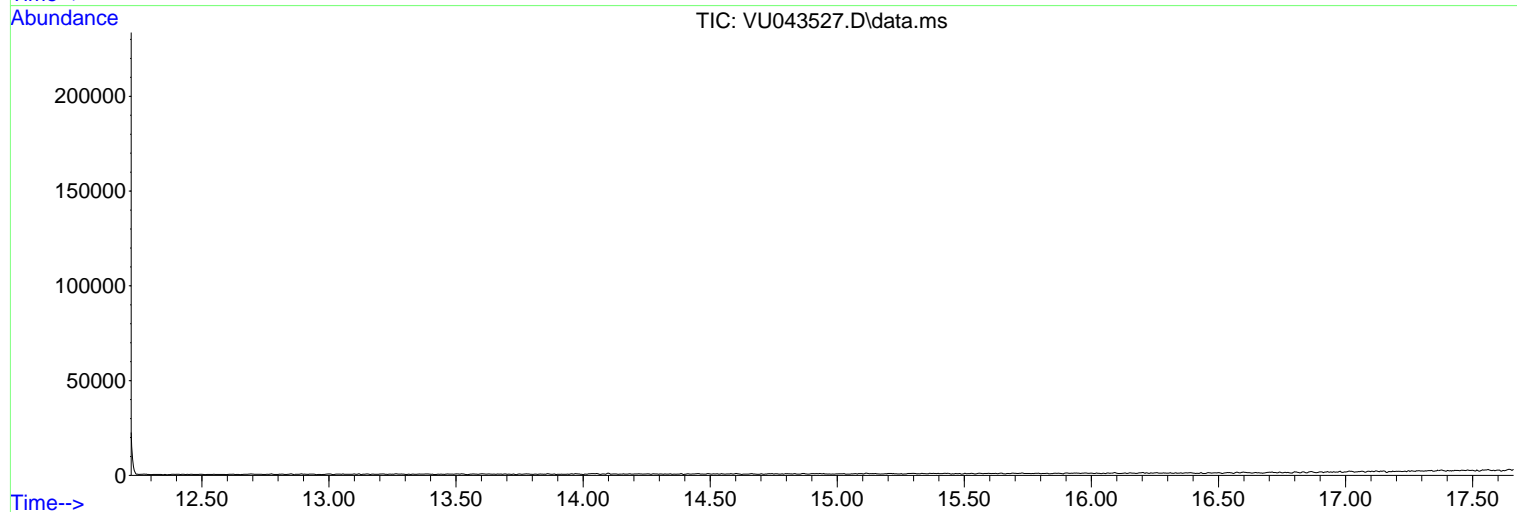
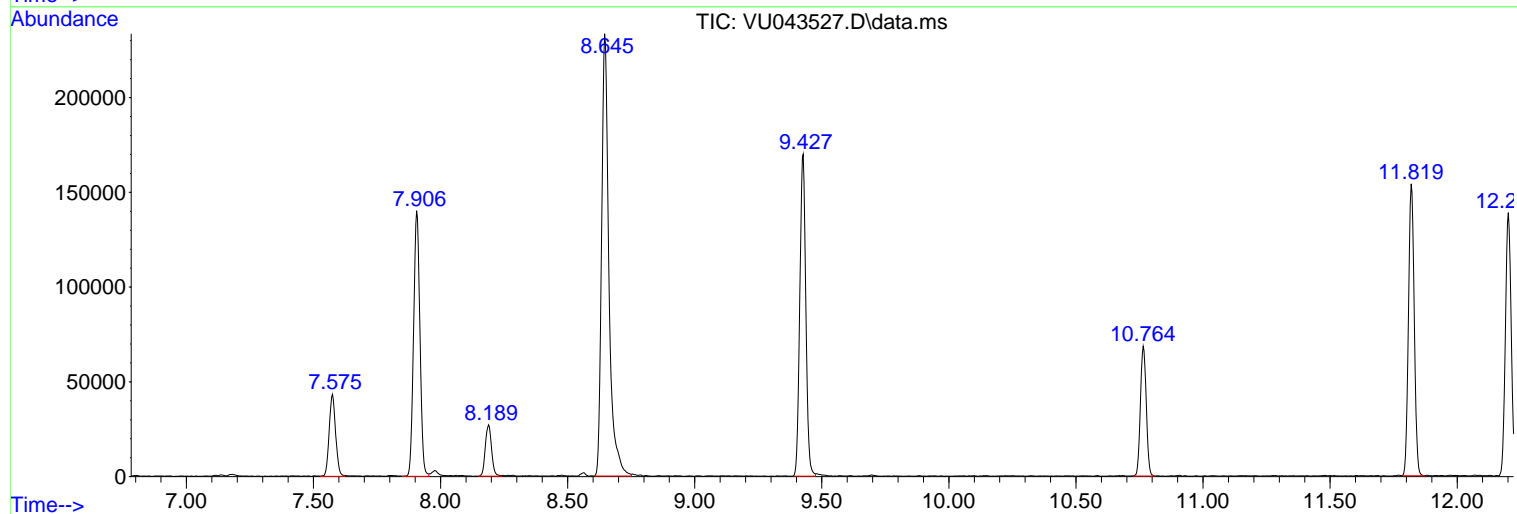
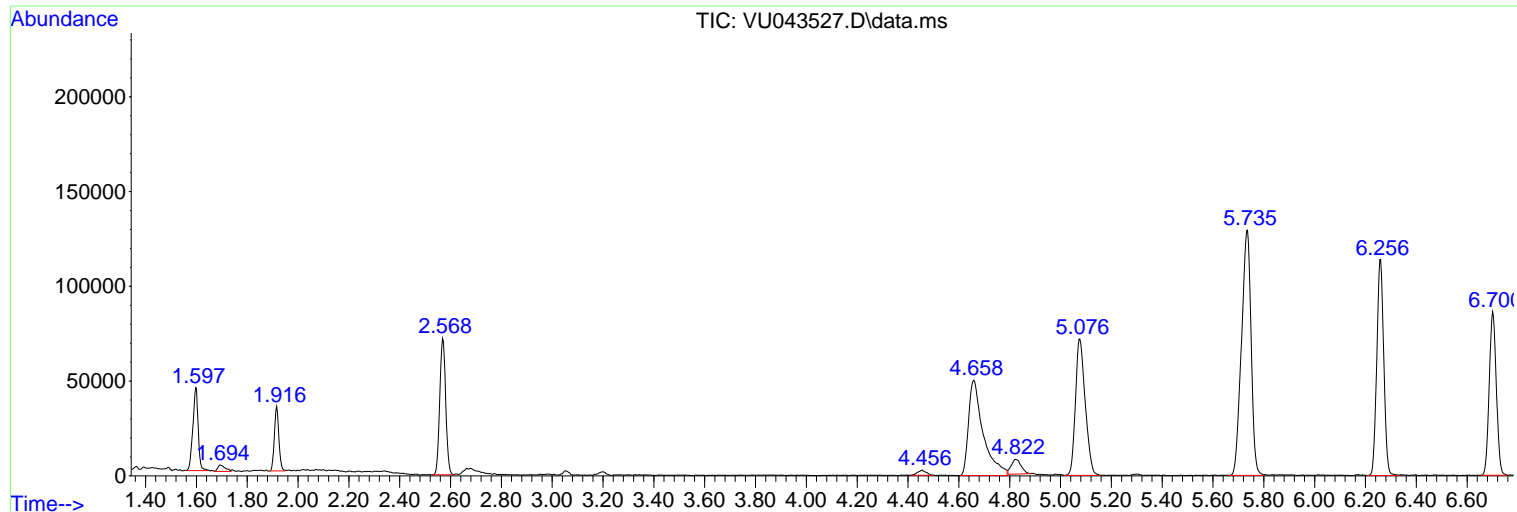
Sum of corrected areas: 3051024

Data Path : Z:\voasrv\HPCHEM1\MSVOA_U\Data\VU050421\
Data File : VU043527.D
Acq On : 04 May 2021 18:10
Operator : SY/MD
Sample : M2195-09
Misc : 25.0mL/MSVOA_U/WATER
ALS Vial : 24 Sample Multiplier: 1

Instrument :
MSVOA_U
ClientSampled :
GB3H7

Quant Method : Z:\voasrv\HPCHEM1\MSVOA_U\Method\SFAMUTR050321WMA.M
Quant Title : TRACE VOA SFAM1.0

TIC Library : C:\DATABASE\NIST11.L
TIC Integration Parameters: LSCINT.P



Data Path : Z:\voasrv\HPCHEM1\MSVOA_U\Data\VU050421\
Data File : VU043527.D
Acq On : 04 May 2021 18:10
Operator : SY/MD
Sample : M2195-09
Misc : 25.0mL/MSVOA_U/WATER
ALS Vial : 24 Sample Multiplier: 1

Instrument :
MSVOA_U
ClientSampleId :
GB3H7

Quant Method : Z:\voasrv\HPCHEM1\MSVOA_U\Method\SFAMUTR050321WMA.M
Quant Title : TRACE VOA SFAM1.0

TIC Library : C:\DATABASE\NIST11.L
TIC Integration Parameters: LSCINT.P

No Library Search Compounds Detected

Data Path : Z:\voasrv\HPCHEM1\MSVOA_U\Data\VU050421\
Data File : VU043527.D
Acq On : 04 May 2021 18:10
Operator : SY/MD
Sample : M2195-09
Misc : 25.0mL/MSVOA_U/WATER
ALS Vial : 24 Sample Multiplier: 1

Instrument :
MSVOA_U
ClientSampled :
GB3H7

Quant Method : Z:\voasrv\HPCHEM1\MSVOA_U\Method\SFAMUTR050321WMA.M
Quant Title : TRACE VOA SFAM1.0

TIC Library : C:\DATABASE\NIST11.L
TIC Integration Parameters: LSCINT.P

TIC Top Hit name	RT	EstConc	Units	Response	--Internal Standard--		
					#	RT	Resp Conc
