

Data Path : Z:\voasrv\HPCHEM1\MSVOA_U\Data\VU050521\
 Data File : VU043554.D
 Acq On : 05 May 2021 17:03
 Operator : SY/MD
 Sample : M2251-05
 Misc : 5.0mL/MSVOA_U/WATER
 ALS Vial : 6 Sample Multiplier: 1

Instrument :
 MSVOA_U
 ClientSampled :

Quant Time: May 05 17:19:08 2021
 Quant Method : Z:\voasrv\HPCHEM1\MSVOA_U\Method\82U041221W.M
 Quant Title : SW846 8260
 QLast Update : Mon Apr 12 13:17:29 2021
 Response via : Initial Calibration

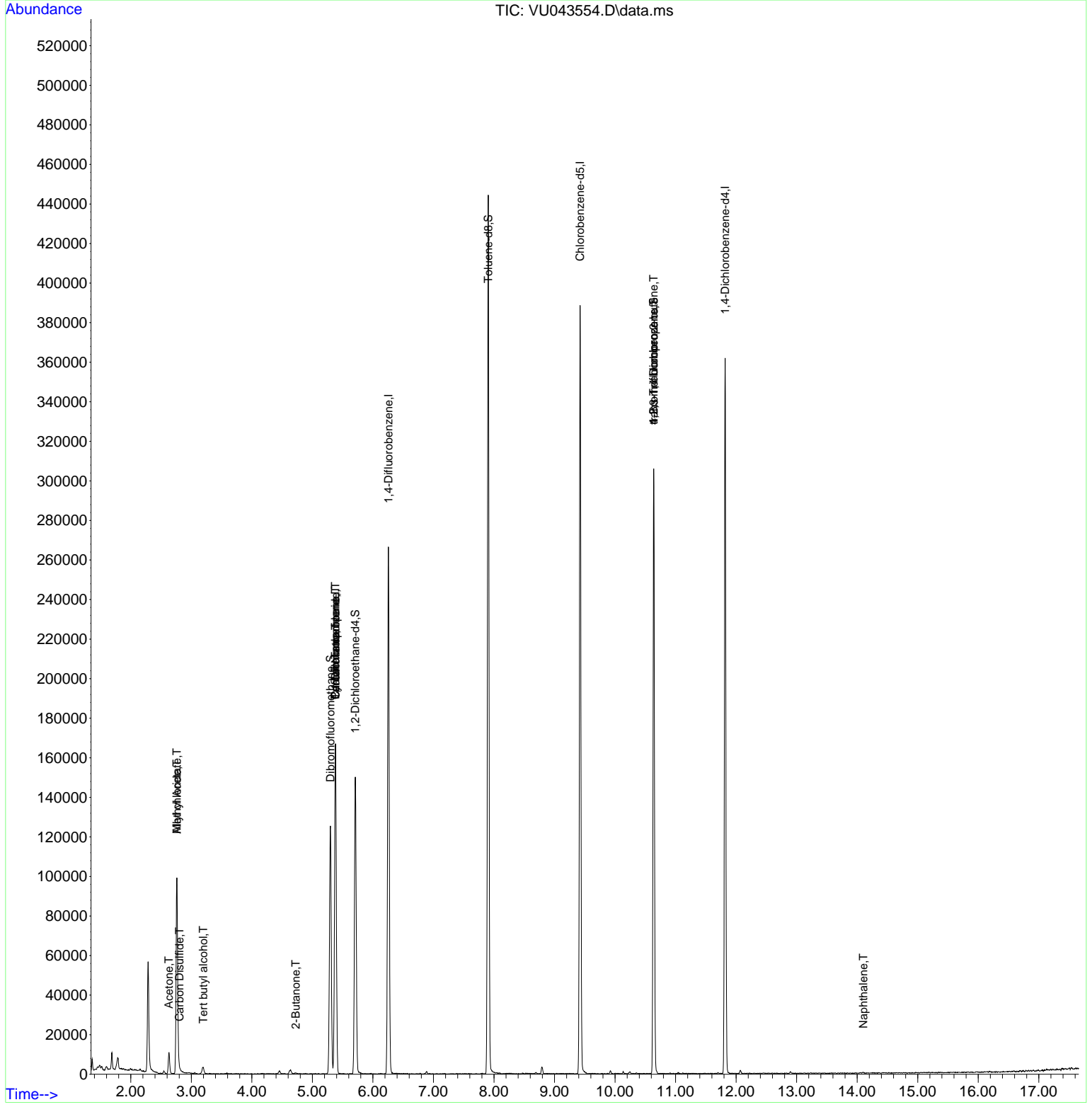
Compound	R.T.	QIon	Response	Conc	Units	Dev(Min)
Internal Standards						
1) Pentafluorobenzene	5.382	168	106961	50.00	ug/l	0.00
34) 1,4-Difluorobenzene	6.256	114	188614	50.00	ug/l	0.00
63) Chlorobenzene-d5	9.423	117	188310	50.00	ug/l	0.00
72) 1,4-Dichlorobenzene-d4	11.819	152	84033	50.00	ug/l	0.00
System Monitoring Compounds						
33) 1,2-Dichloroethane-d4	5.710	65	113839	63.31	ug/l	0.00
Spiked Amount	50.000		Recovery	=	126.62%	
35) Dibromofluoromethane	5.298	113	76564	54.02	ug/l	0.00
Spiked Amount	50.000		Recovery	=	108.04%	
50) Toluene-d8	7.906	98	263761	52.59	ug/l	0.00
Spiked Amount	50.000		Recovery	=	105.18%	
62) 4-Bromofluorobenzene	10.639	95	90756	45.19	ug/l	0.00
Spiked Amount	50.000		Recovery	=	90.38%	
Target Compounds						
3) Chloromethane	1.520	50	985	Below Cal		91
11) Tert butyl alcohol	3.198	59	2171	4.68	ug/l #	94
14) Allyl chloride	2.761	41	10758	4.43	ug/l #	67
16) Acetone	2.629	43	11446	10.53	ug/l	97
17) Carbon Disulfide	2.803	76	712	0.23	ug/l #	74
18) Methyl Acetate	2.761	43	29298	13.04	ug/l #	55
25) 2-Butanone	4.726	43	808	0.49	ug/l #	54
31) Cyclohexane	5.382	56	2853	1.29	ug/l #	3
36) 1,1-Dichloropropene	5.382	75	10008	5.00	ug/l #	50
38) Carbon Tetrachloride	5.382	117	11564	5.39	ug/l #	16
76) 1,2,3-Trichloropropane	10.639	75	52086	21.21	ug/l #	37
81) trans-1,4-Dichloro-2-b...	10.639	75	52086	62.33	ug/l #	7
95) Naphthalene	14.102	128	588	2.83	ug/l #	69

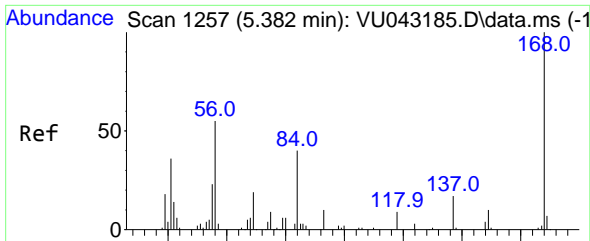
(#) = qualifier out of range (m) = manual integration (+) = signals summed

Data Path : Z:\voasrv\HPCHEM1\MSVOA_U\Data\VU050521\
 Data File : VU043554.D
 Acq On : 05 May 2021 17:03
 Operator : SY/MD
 Sample : M2251-05
 Misc : 5.0mL/MSVOA_U/WATER
 ALS Vial : 6 Sample Multiplier: 1

Instrument :
 MSVOA_U
 ClientSampleId :

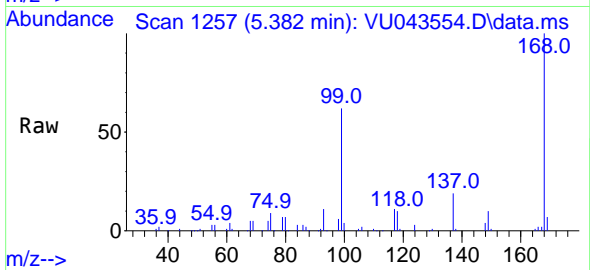
Quant Time: May 05 17:19:08 2021
 Quant Method : Z:\voasrv\HPCHEM1\MSVOA_U\Method\82U041221W.M
 Quant Title : SW846 8260
 QLast Update : Mon Apr 12 13:17:29 2021
 Response via : Initial Calibration



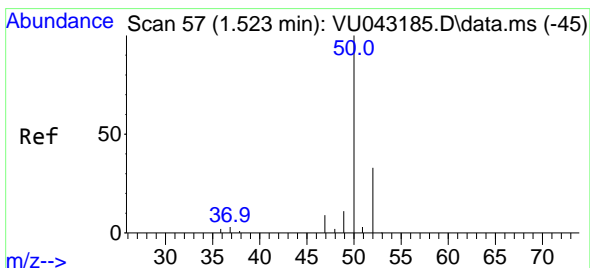
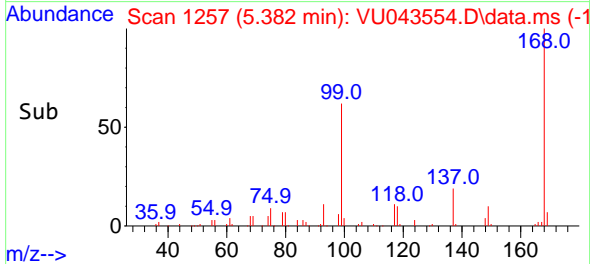
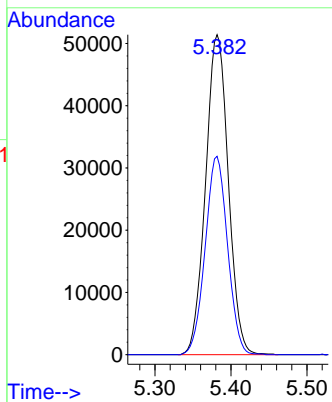


#1
 Pentafluorobenzene
 Concen: 50.00 ug/l
 RT: 5.382 min Scan# 1257
 Delta R.T. -0.000 min
 Lab File: VU043554.D
 Acq: 05 May 2021 17:03

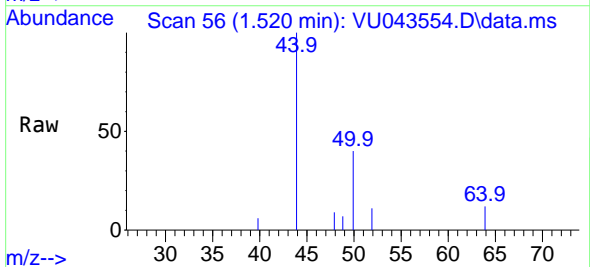
Instrument :
 MSVOA_U
 ClientSampled :



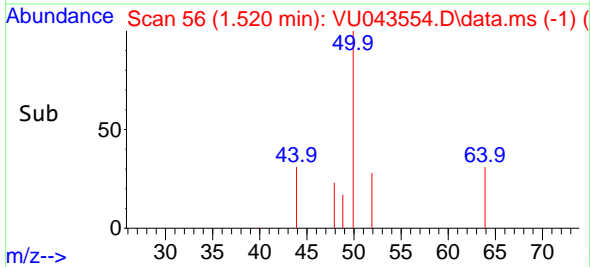
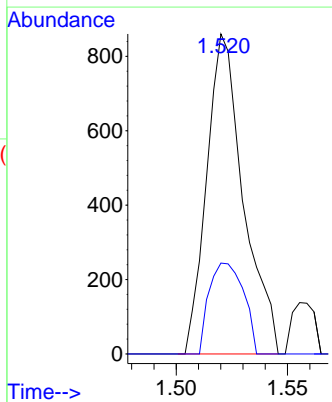
Tgt Ion:168 Resp: 106961
 Ion Ratio Lower Upper
 168 100
 99 62.0 45.0 67.4

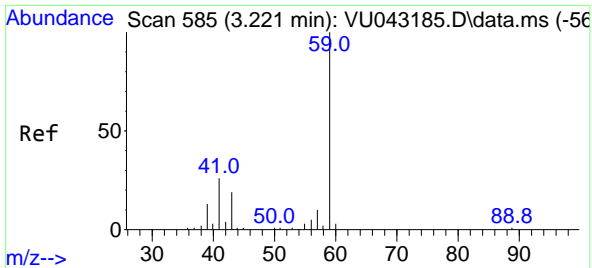


#3
 Chloromethane
 Concen: Below Cal
 RT: 1.520 min Scan# 56
 Delta R.T. 0.000 min
 Lab File: VU043554.D
 Acq: 05 May 2021 17:03



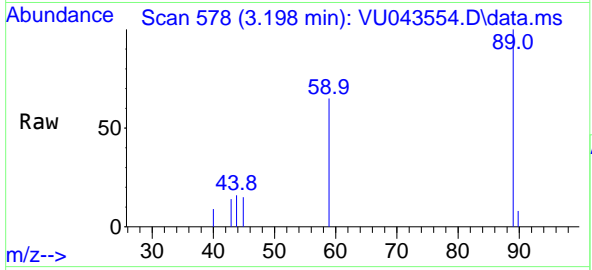
Tgt Ion: 50 Resp: 985
 Ion Ratio Lower Upper
 50 100
 52 28.4 26.6 40.0



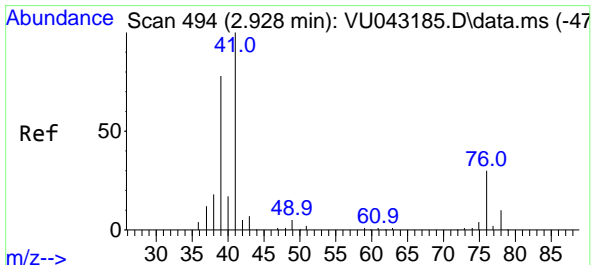
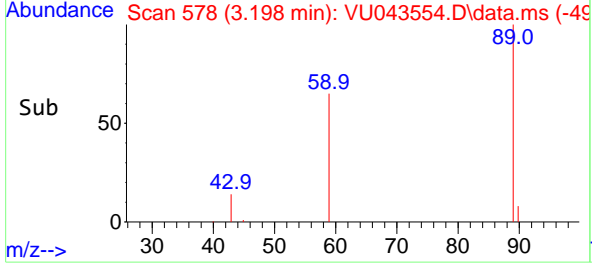
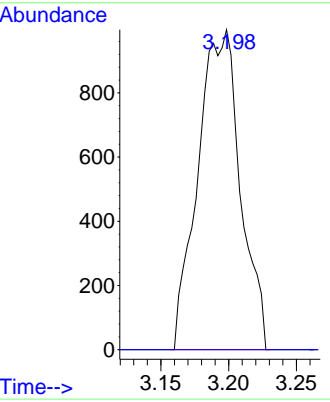


#11
 Tert butyl alcohol
 Concen: 4.68 ug/l
 RT: 3.198 min Scan# 578
 Delta R.T. -0.026 min
 Lab File: VU043554.D
 Acq: 05 May 2021 17:03

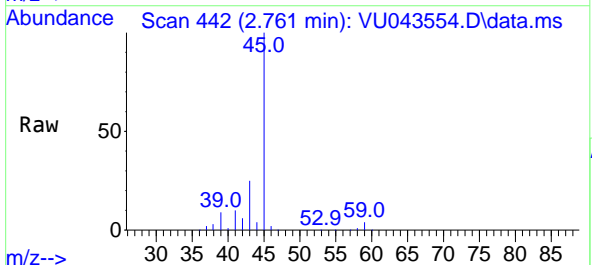
Instrument :
 MSVOA_U
 ClientSampled :



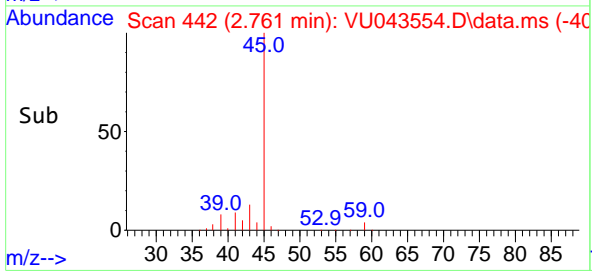
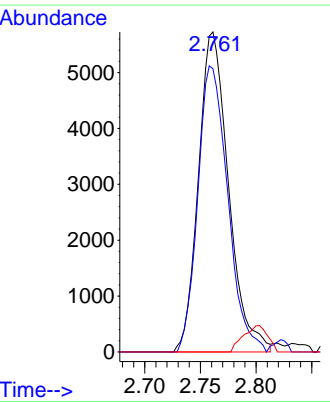
Tgt Ion: 59 Resp: 2171
 Ion Ratio Lower Upper
 59 100
 57 0.0 1.6 2.4#

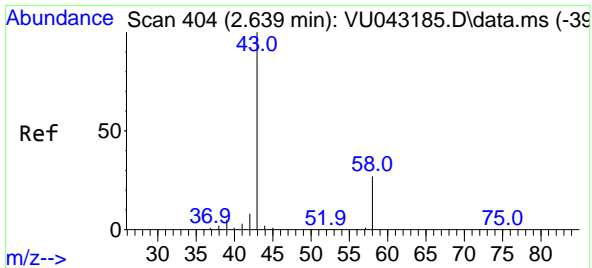


#14
 Allyl chloride
 Concen: 4.43 ug/l
 RT: 2.761 min Scan# 442
 Delta R.T. -0.167 min
 Lab File: VU043554.D
 Acq: 05 May 2021 17:03



Tgt Ion: 41 Resp: 10758
 Ion Ratio Lower Upper
 41 100
 39 88.9 54.9 82.3#
 76 0.0 22.5 33.7#



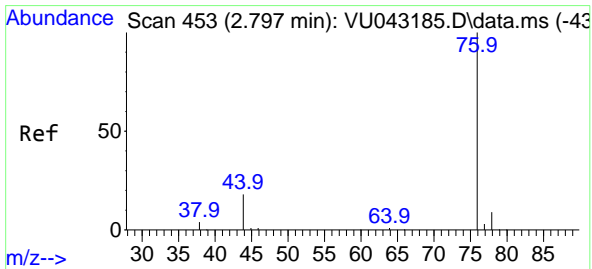
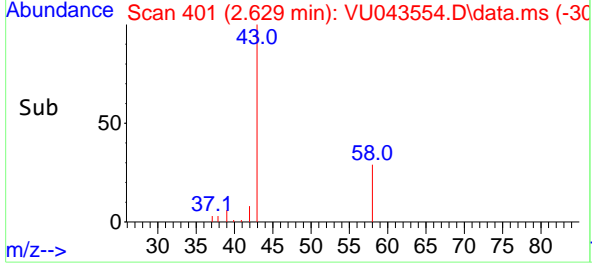
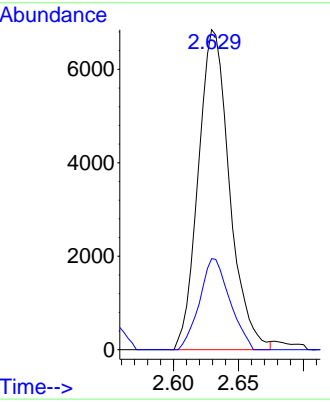
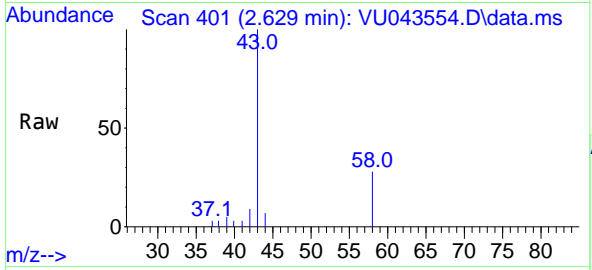


#16
 Acetone
 Concen: 10.53 ug/l
 RT: 2.629 min Scan# 401
 Delta R.T. 0.000 min
 Lab File: VU043554.D
 Acq: 05 May 2021 17:03

Instrument :
 MSVOA_U
 ClientSampled :

Tgt Ion: 43 Resp: 11446

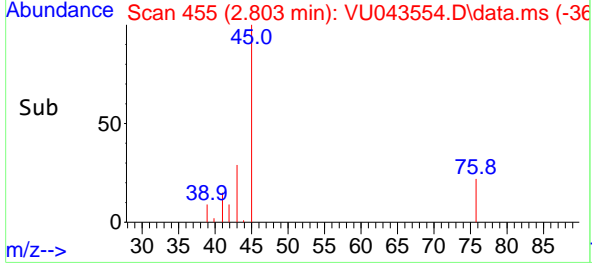
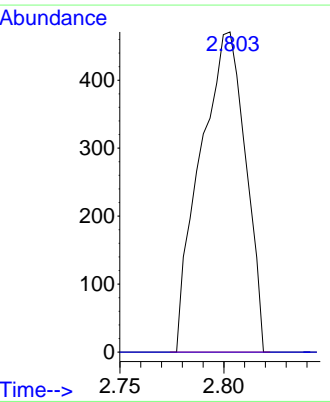
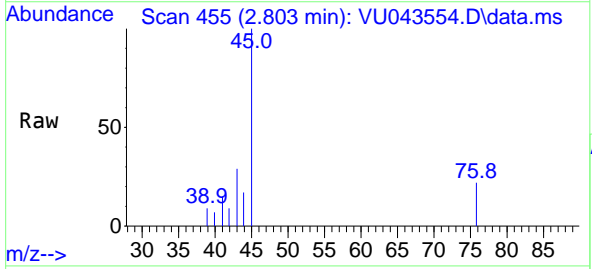
Ion	Ratio	Lower	Upper
43	100		
58	28.5	21.5	32.3

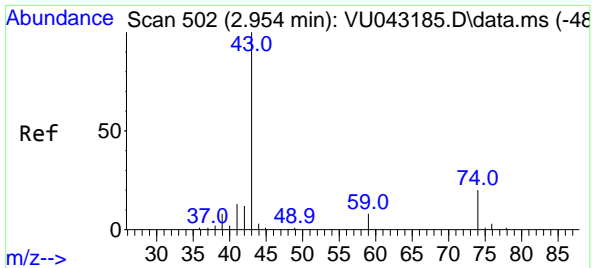


#17
 Carbon Disulfide
 Concen: 0.23 ug/l
 RT: 2.803 min Scan# 455
 Delta R.T. 0.006 min
 Lab File: VU043554.D
 Acq: 05 May 2021 17:03

Tgt Ion: 76 Resp: 712

Ion	Ratio	Lower	Upper
76	100		
78	0.0	7.5	11.3#

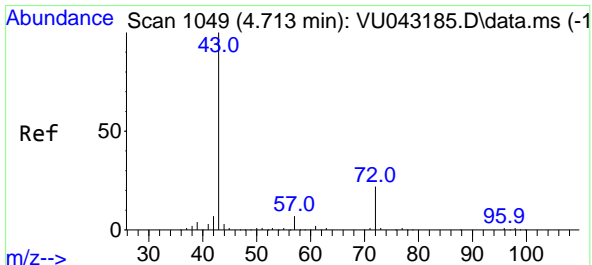
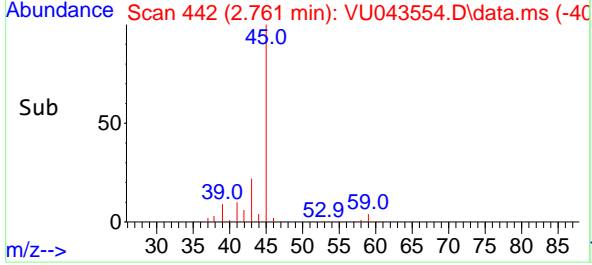
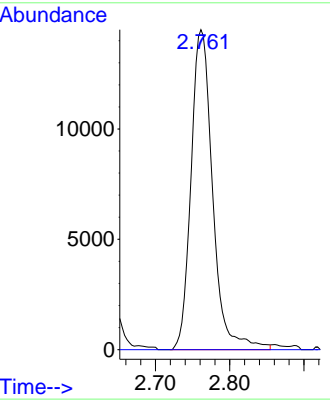
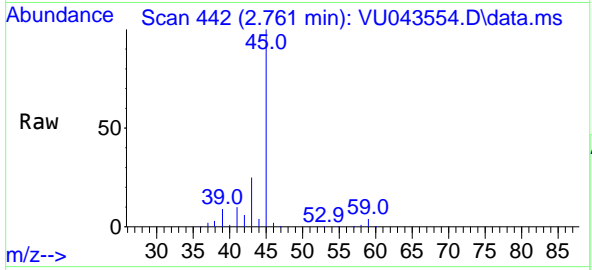




#18
Methyl Acetate
Concen: 13.04 ug/l
RT: 2.761 min Scan# 442
Delta R.T. -0.190 min
Lab File: VU043554.D
Acq: 05 May 2021 17:03

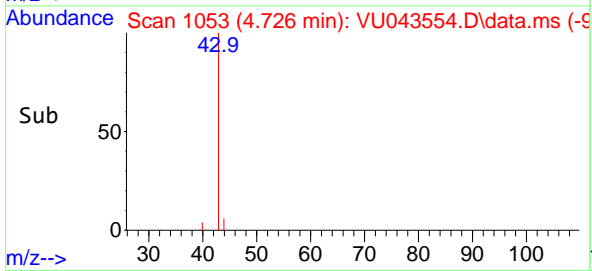
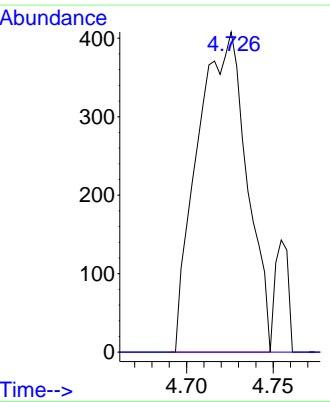
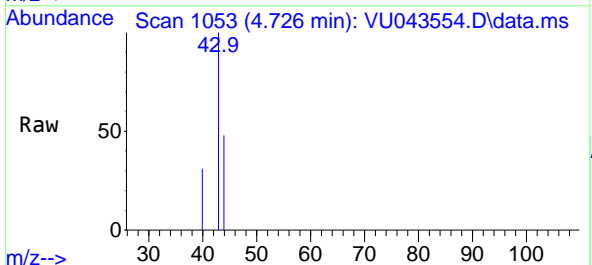
Instrument :
MSVOA_U
ClientSampled :

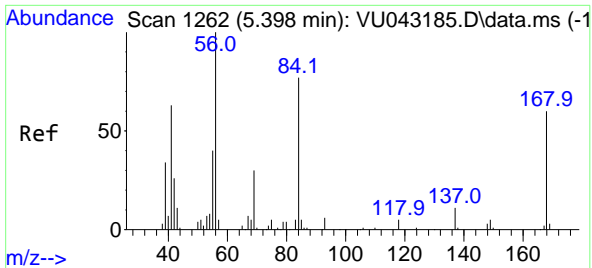
Tgt Ion: 43 Resp: 29298
Ion Ratio Lower Upper
43 100
74 0.0 16.6 25.0#



#25
2-Butanone
Concen: 0.49 ug/l
RT: 4.726 min Scan# 1053
Delta R.T. 0.019 min
Lab File: VU043554.D
Acq: 05 May 2021 17:03

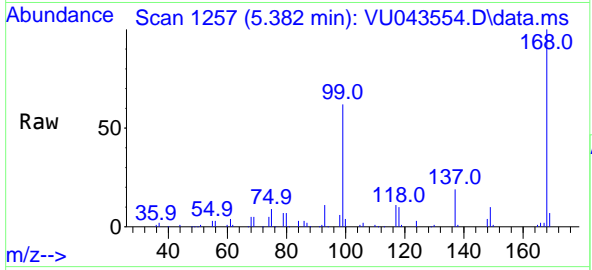
Tgt Ion: 43 Resp: 808
Ion Ratio Lower Upper
43 100
72 0.0 17.4 26.0#



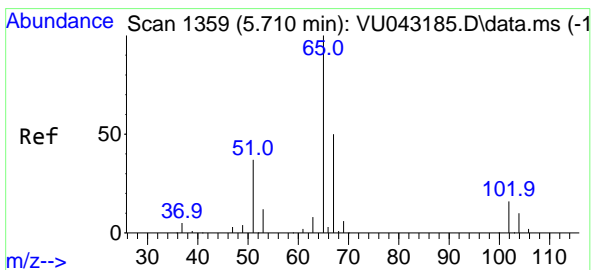
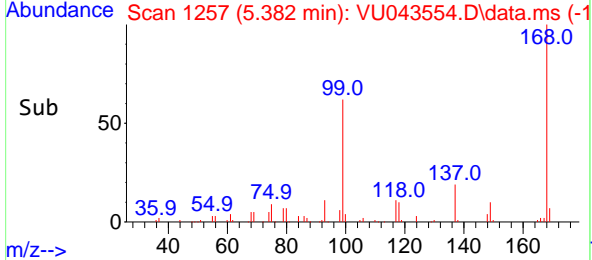
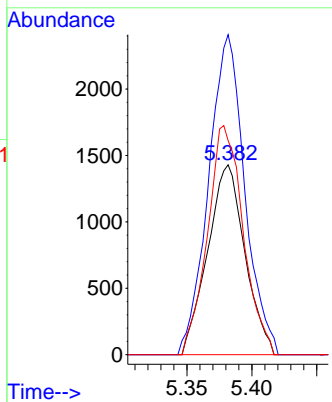


#31
 Cyclohexane
 Concen: 1.29 ug/l
 RT: 5.382 min Scan# 1257
 Delta R.T. -0.013 min
 Lab File: VU043554.D
 Acq: 05 May 2021 17:03

Instrument :
 MSVOA_U
 ClientSampled :

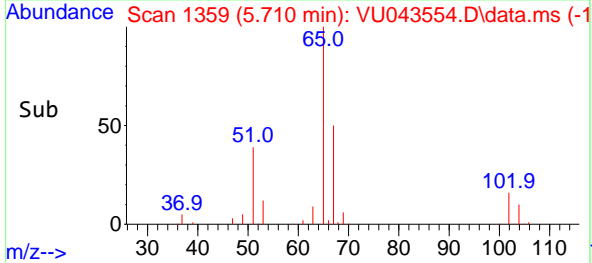
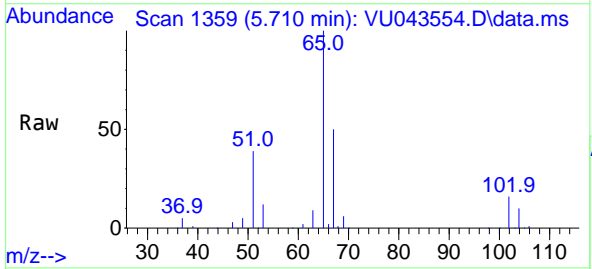
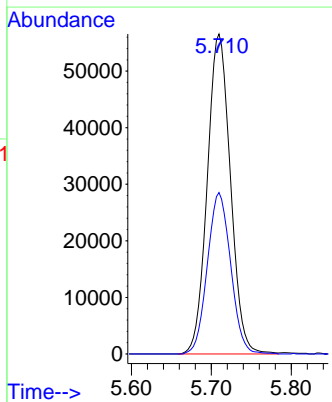


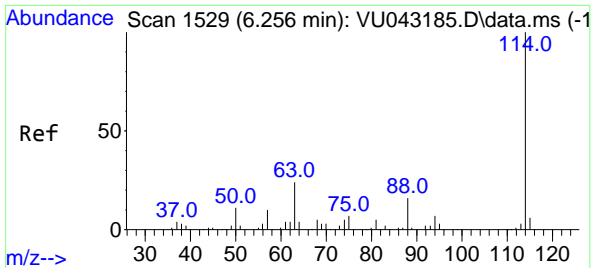
Tgt Ion: 56 Resp: 2853
 Ion Ratio Lower Upper
 56 100
 69 168.4 24.9 37.3#
 84 112.7 63.7 95.5#



#33
 1,2-Dichloroethane-d4
 Concen: 63.31 ug/l
 RT: 5.710 min Scan# 1359
 Delta R.T. -0.000 min
 Lab File: VU043554.D
 Acq: 05 May 2021 17:03

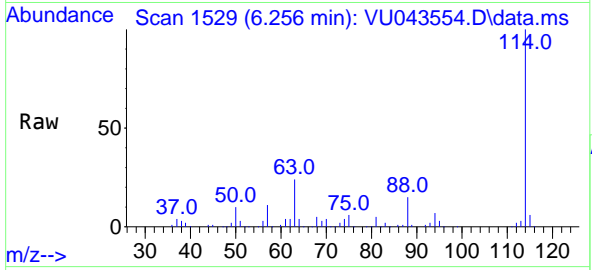
Tgt Ion: 65 Resp: 113839
 Ion Ratio Lower Upper
 65 100
 67 50.7 0.0 99.8



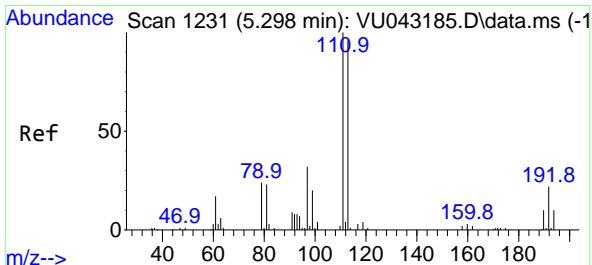
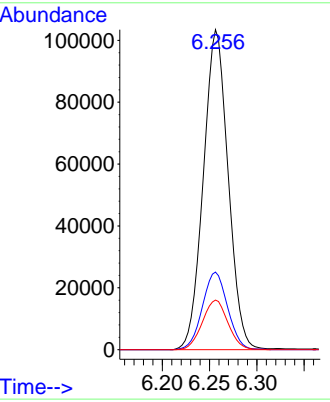
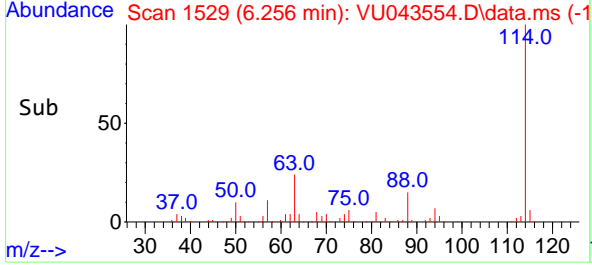


#34
 1,4-Difluorobenzene
 Concen: 50.00 ug/l
 RT: 6.256 min Scan# 1529
 Delta R.T. 0.000 min
 Lab File: VU043554.D
 Acq: 05 May 2021 17:03

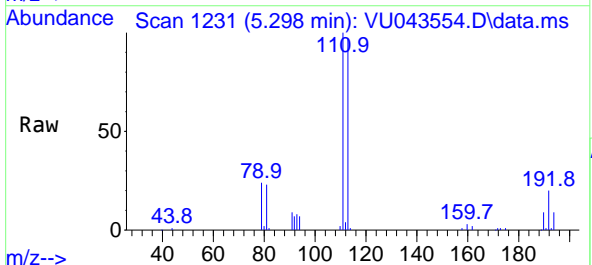
Instrument :
 MSVOA_U
 ClientSampled :



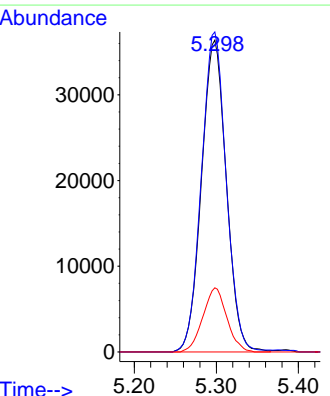
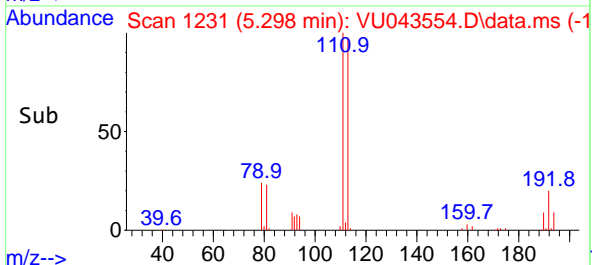
Tgt Ion:114 Resp: 188614
 Ion Ratio Lower Upper
 114 100
 63 24.2 0.0 44.2
 88 15.5 0.0 33.4

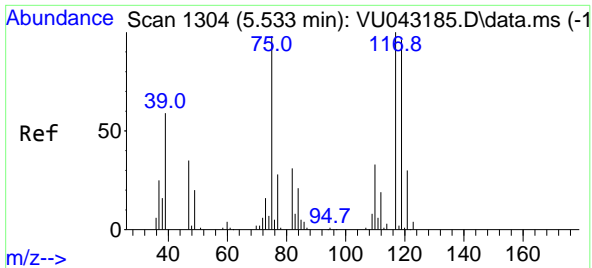


#35
 Dibromofluoromethane
 Concen: 54.02 ug/l
 RT: 5.298 min Scan# 1231
 Delta R.T. 0.000 min
 Lab File: VU043554.D
 Acq: 05 May 2021 17:03



Tgt Ion:113 Resp: 76564
 Ion Ratio Lower Upper
 113 100
 111 102.3 81.8 122.8
 192 19.9 17.2 25.8



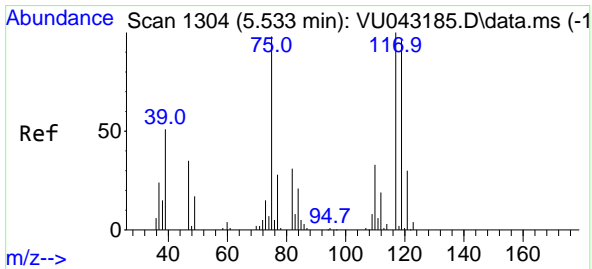
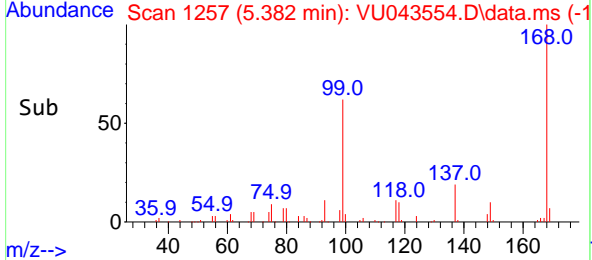
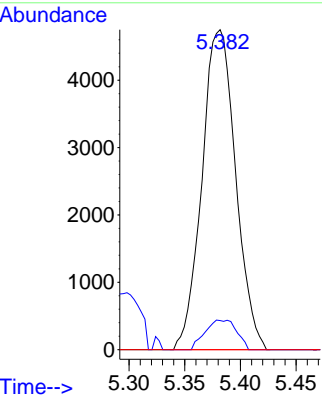
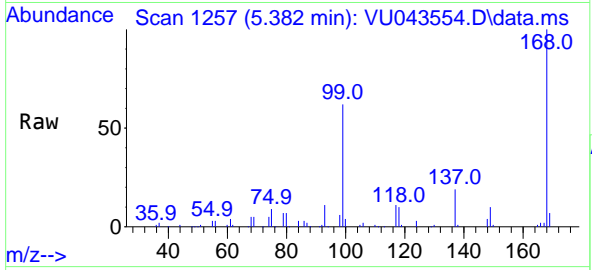


#36
 1,1-Dichloropropene
 Concen: 5.00 ug/l
 RT: 5.382 min Scan# 1257
 Delta R.T. -0.151 min
 Lab File: VU043554.D
 Acq: 05 May 2021 17:03

Instrument :
 MSVOA_U
 ClientSampled :

Tgt Ion: 75 Resp: 10008

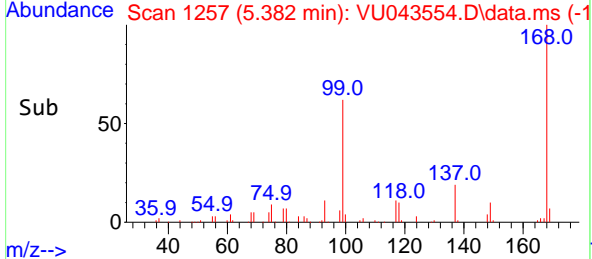
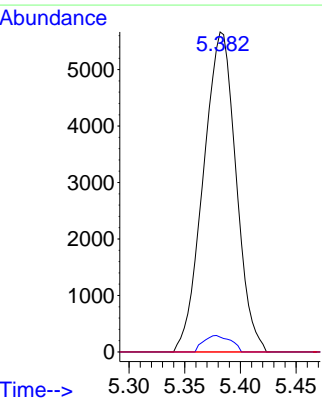
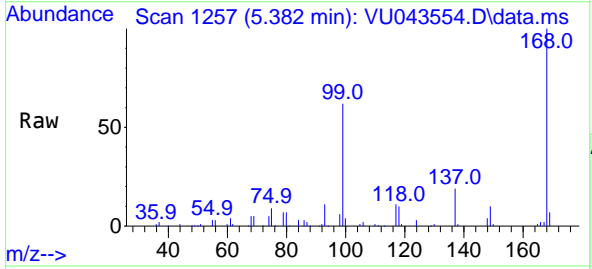
Ion	Ratio	Lower	Upper
75	100		
110	8.6	16.8	50.3#
77	0.0	24.8	37.2#

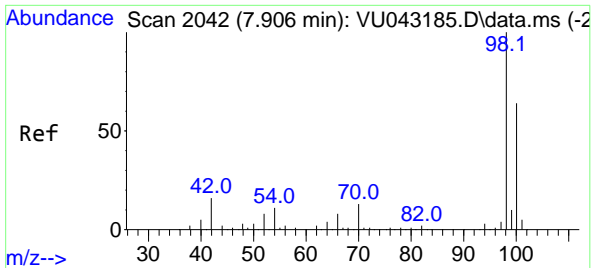


#38
 Carbon Tetrachloride
 Concen: 5.39 ug/l
 RT: 5.382 min Scan# 1257
 Delta R.T. -0.151 min
 Lab File: VU043554.D
 Acq: 05 May 2021 17:03

Tgt Ion: 117 Resp: 11564

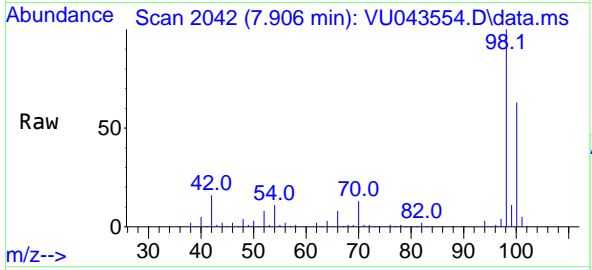
Ion	Ratio	Lower	Upper
117	100		
119	4.7	75.5	113.3#
121	0.0	24.7	37.1#



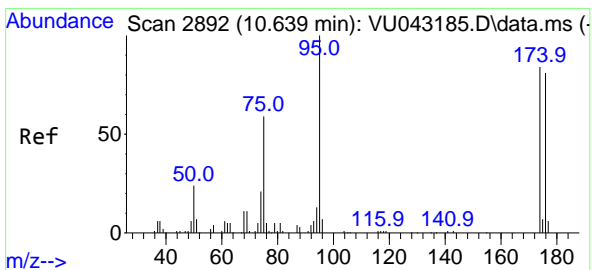
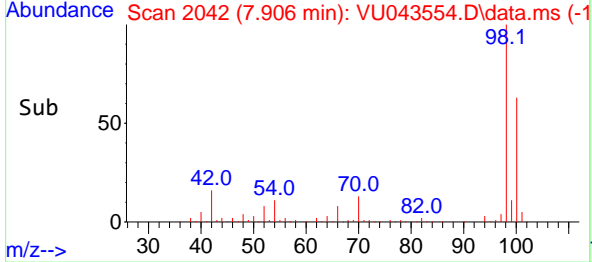
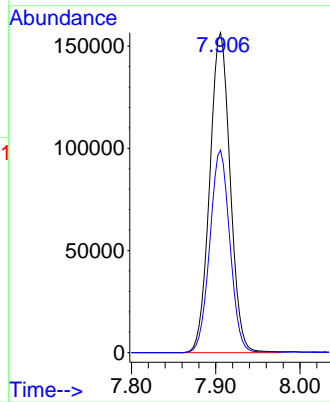


#50
 Toluene-d8
 Concen: 52.59 ug/l
 RT: 7.906 min Scan# 2042
 Delta R.T. -0.000 min
 Lab File: VU043554.D
 Acq: 05 May 2021 17:03

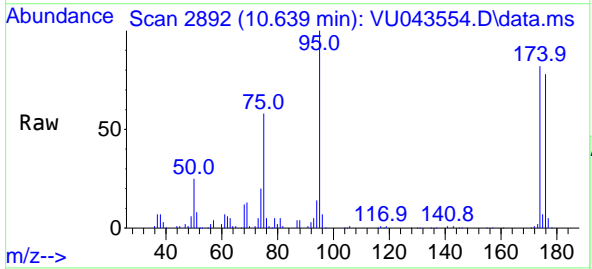
Instrument :
 MSVOA_U
 ClientSampled :



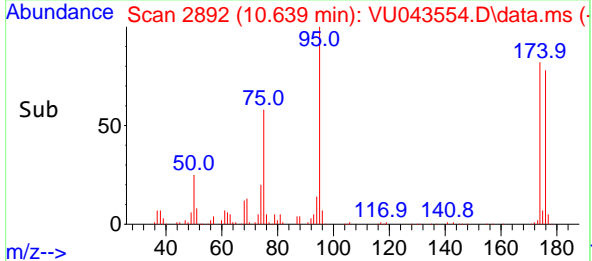
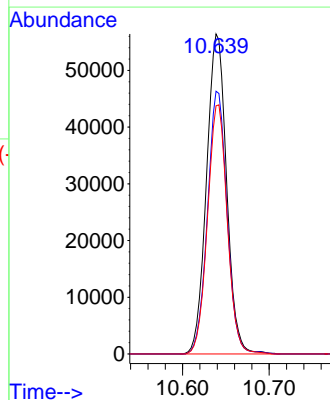
Tgt Ion: 98 Resp: 263761
 Ion Ratio Lower Upper
 98 100
 100 62.1 50.2 75.2

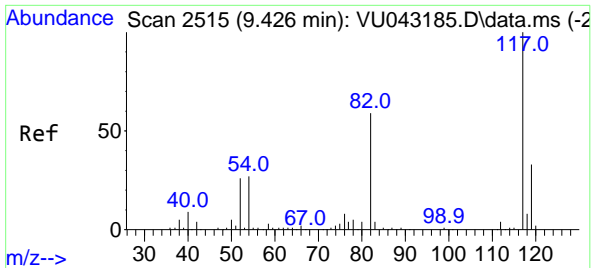


#62
 4-Bromofluorobenzene
 Concen: 45.19 ug/l
 RT: 10.639 min Scan# 2892
 Delta R.T. -0.000 min
 Lab File: VU043554.D
 Acq: 05 May 2021 17:03



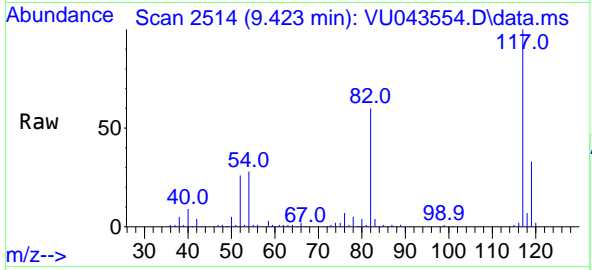
Tgt Ion: 95 Resp: 90756
 Ion Ratio Lower Upper
 95 100
 174 80.2 0.0 172.2
 176 76.6 0.0 168.8



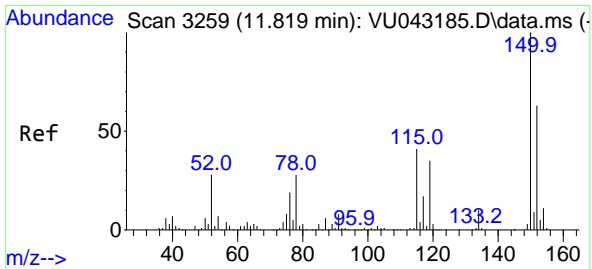
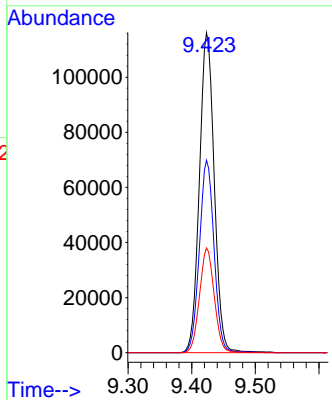
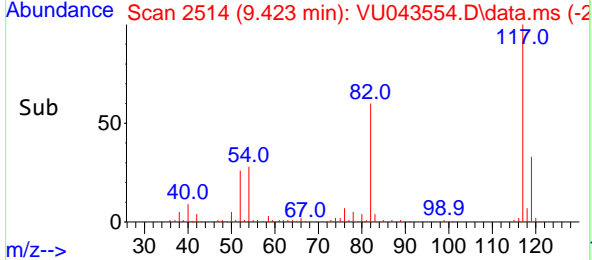


#63
 Chlorobenzene-d5
 Concen: 50.00 ug/l
 RT: 9.423 min Scan# 2514
 Delta R.T. 0.000 min
 Lab File: VU043554.D
 Acq: 05 May 2021 17:03

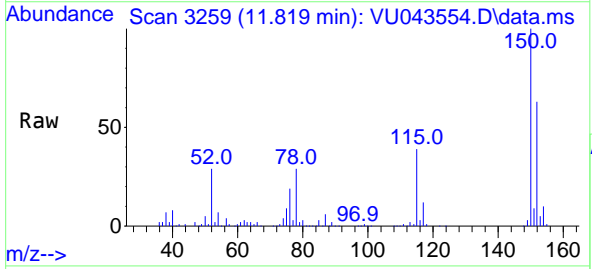
Instrument :
 MSVOA_U
 ClientSampled :



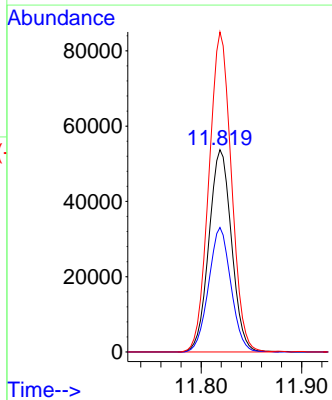
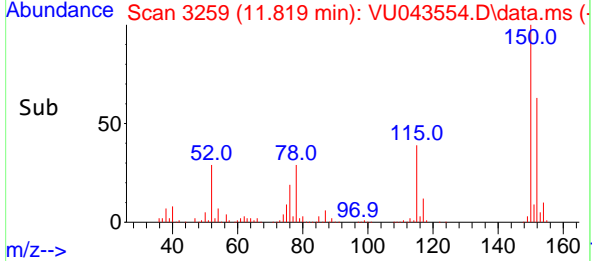
Tgt Ion:117 Resp: 188310
 Ion Ratio Lower Upper
 117 100
 82 60.1 45.8 68.6
 119 32.7 25.8 38.8

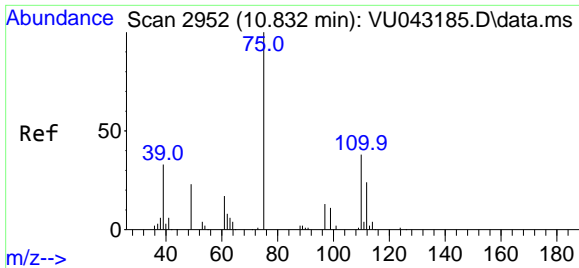


#72
 1,4-Dichlorobenzene-d4
 Concen: 50.00 ug/l
 RT: 11.819 min Scan# 3259
 Delta R.T. -0.000 min
 Lab File: VU043554.D
 Acq: 05 May 2021 17:03



Tgt Ion:152 Resp: 84033
 Ion Ratio Lower Upper
 152 100
 115 60.7 41.5 124.6
 150 157.1 0.0 342.4

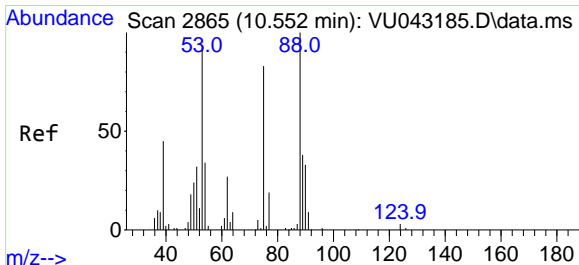
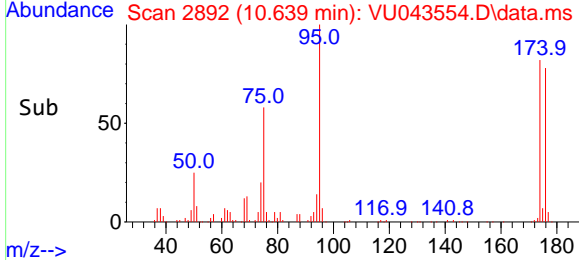
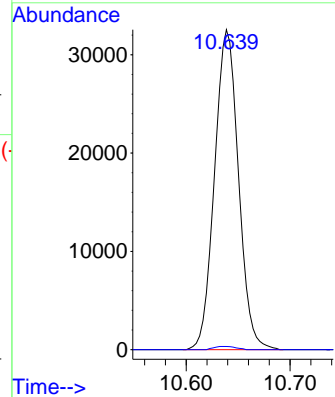
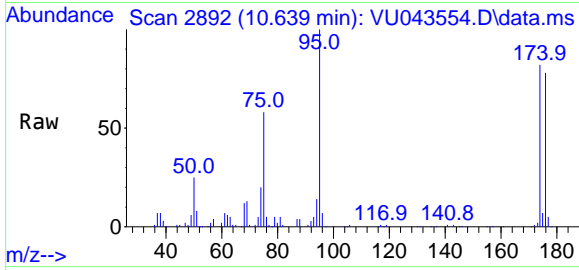




#76
 1,2,3-Trichloropropane
 Concen: 21.21 ug/l
 RT: 10.639 min Scan# 2892
 Delta R.T. -0.196 min
 Lab File: VU043554.D
 Acq: 05 May 2021 17:03

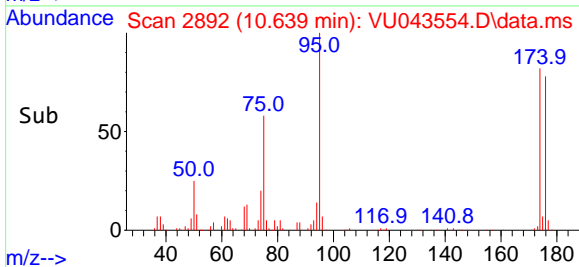
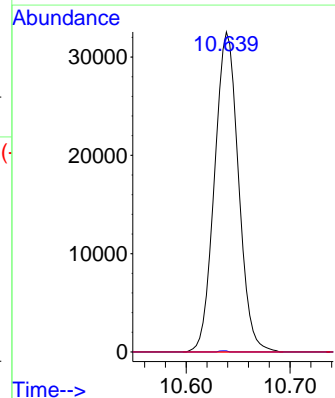
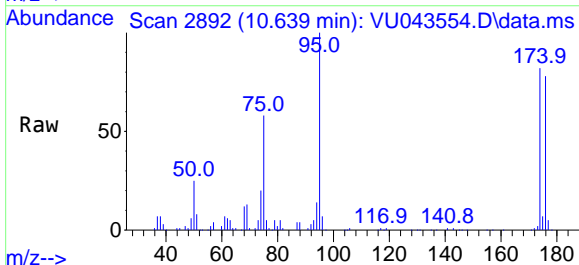
Instrument :
 MSVOA_U
 ClientSampled :

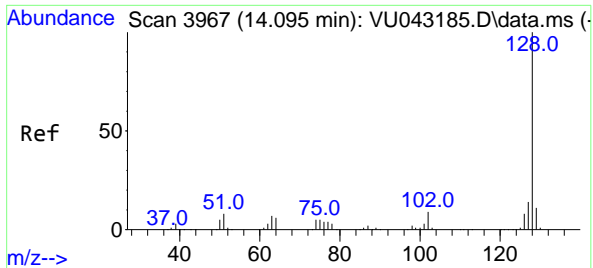
Tgt Ion: 75 Resp: 52086
 Ion Ratio Lower Upper
 75 100
 77 0.9 20.2 60.5#



#81
 trans-1,4-Dichloro-2-butene
 Concen: 62.33 ug/l
 RT: 10.639 min Scan# 2892
 Delta R.T. 0.084 min
 Lab File: VU043554.D
 Acq: 05 May 2021 17:03

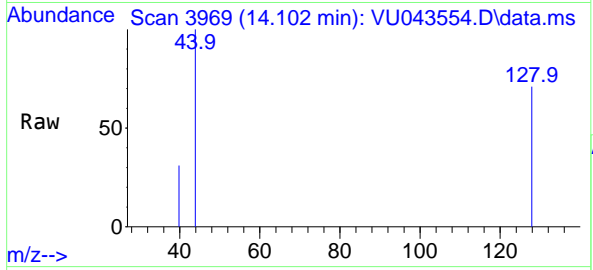
Tgt Ion: 75 Resp: 52086
 Ion Ratio Lower Upper
 75 100
 53 0.1 85.6 128.4#
 89 0.0 35.7 53.5#





#95
 Naphthalene
 Concen: 2.83 ug/l
 RT: 14.102 min Scan# 3969
 Delta R.T. 0.010 min
 Lab File: VU043554.D
 Acq: 05 May 2021 17:03

Instrument :
 MSVOA_U
 ClientSampled :



Tgt Ion:128 Resp: 588

Ion	Ratio	Lower	Upper
128	100		
127	0.0	10.8	16.2#
129	0.0	8.6	13.0#

