

Data Path : W:\HPCHEM1\MSVOA_U\DATA\VU050618\
 Data File : VU023684.D
 Acq On : 06 May 2018 11:54
 Operator : MD/SY
 Sample : VU0506WBL01
 Misc : 5.0mL/MSVOA_U/WATER
 ALS Vial : 4 Sample Multiplier: 1

Quant Time: May 07 00:51:33 2018
 Quant Method : W:\HPCHEM1\MSVOA_U\METHOD\SOMULM050118WMA.M
 Quant Title : VOC Analysis
 QLast Update : Mon May 07 00:51:10 2018
 Response via : Initial Calibration

| Internal Standards | R.T. | QIon | Response | Conc | Units | Dev(Min) |
|----------------------------|-------|------|----------|-------|-------|----------|
| 1) 1,4-Difluorobenzene | 5.89 | 114 | 300748 | 50.00 | ug/L | 0.00 |
| 28) Chlorobenzene-d5 | 9.09 | 117 | 299358 | 50.00 | ug/L | 0.00 |
| 60) 1,4-Dichlorobenzene-d4 | 11.49 | 152 | 139763 | 50.00 | ug/L | 0.00 |

System Monitoring Compounds

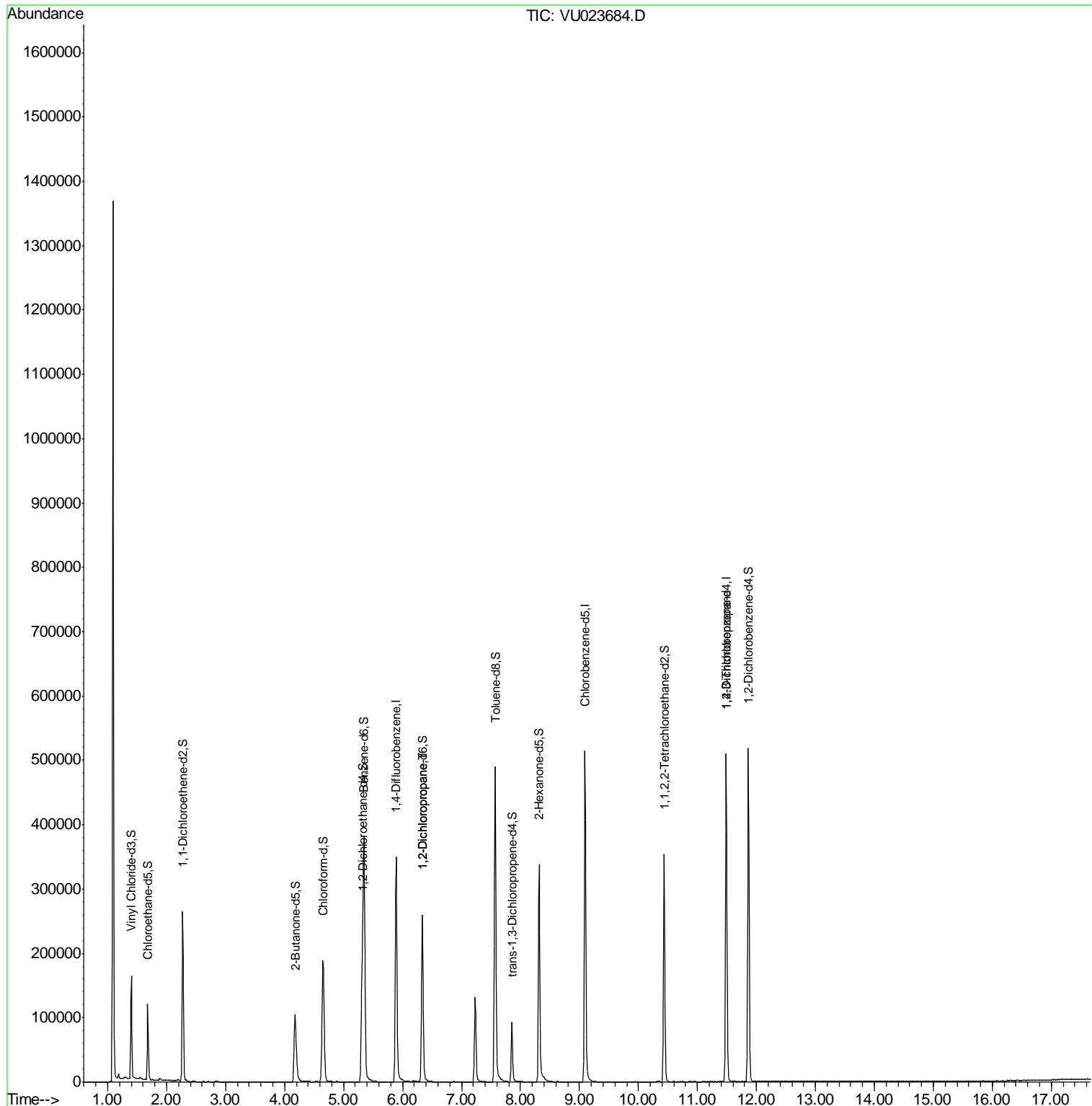
| | | | | | | |
|--------------------------------|---------|-------|----------|----------|------|---------|
| 4) Vinyl Chloride-d3 | 1.40 | 65 | 103135 | 48.38 | ug/L | 0.00 |
| Spiked Amount | 50.000 | Range | 60 - 135 | Recovery | = | 96.76% |
| 7) Chloroethane-d5 | 1.68 | 69 | 82578 | 50.83 | ug/L | 0.00 |
| Spiked Amount | 50.000 | Range | 70 - 130 | Recovery | = | 101.66% |
| 11) 1,1-Dichloroethene-d2 | 2.27 | 63 | 151818 | 36.53 | ug/L | 0.00 |
| Spiked Amount | 50.000 | Range | 60 - 125 | Recovery | = | 73.06% |
| 21) 2-Butanone-d5 | 4.18 | 46 | 172208 | 116.93 | ug/L | 0.00 |
| Spiked Amount | 100.000 | Range | 40 - 130 | Recovery | = | 116.93% |
| 24) Chloroform-d | 4.65 | 84 | 188152 | 53.38 | ug/L | 0.00 |
| Spiked Amount | 50.000 | Range | 70 - 125 | Recovery | = | 106.76% |
| 26) 1,2-Dichloroethane-d4 | 5.31 | 65 | 129537 | 52.84 | ug/L | 0.00 |
| Spiked Amount | 50.000 | Range | 70 - 125 | Recovery | = | 105.68% |
| 32) Benzene-d6 | 5.35 | 84 | 391114 | 48.70 | ug/L | 0.00 |
| Spiked Amount | 50.000 | Range | 70 - 125 | Recovery | = | 97.40% |
| 36) 1,2-Dichloropropane-d6 | 6.34 | 67 | 133530 | 49.63 | ug/L | 0.00 |
| Spiked Amount | 50.000 | Range | 70 - 120 | Recovery | = | 99.26% |
| 41) Toluene-d8 | 7.57 | 98 | 348139 | 47.02 | ug/L | 0.00 |
| Spiked Amount | 50.000 | Range | 80 - 120 | Recovery | = | 94.04% |
| 43) trans-1,3-Dichloropropene- | 7.85 | 79 | 54308 | 46.89 | ug/L | 0.00 |
| Spiked Amount | 50.000 | Range | 60 - 125 | Recovery | = | 93.78% |
| 47) 2-Hexanone-d5 | 8.31 | 63 | 114234 | 111.81 | ug/L | 0.00 |
| Spiked Amount | 100.000 | Range | 45 - 130 | Recovery | = | 111.81% |
| 57) 1,1,2,2-Tetrachloroethane- | 10.44 | 84 | 176262 | 50.65 | ug/L | 0.00 |
| Spiked Amount | 50.000 | Range | 65 - 120 | Recovery | = | 101.30% |
| 64) 1,2-Dichlorobenzene-d4 | 11.86 | 152 | 141225 | 51.80 | ug/L | 0.00 |
| Spiked Amount | 50.000 | Range | 80 - 120 | Recovery | = | 103.60% |

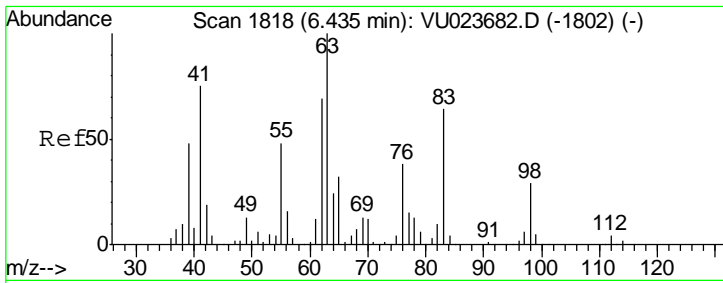
| Target Compounds | R.T. | QIon | Response | Conc | Units | Qvalue |
|----------------------------|-------|------|----------|------|--------|--------|
| 37) 1,2-Dichloropropane | 6.34 | 63 | 13868 | 4.59 | ug/L # | 88 |
| 59) 1,2,3-Trichloropropane | 11.49 | 75 | 16384 | 4.91 | ug/L | 92 |

(#) = qualifier out of range (m) = manual integration (+) = signals summed

Data Path : W:\HPCHEM1\MSVOA_U\DATA\VU050618\
 Data File : VU023684.D
 Acq On : 06 May 2018 11:54
 Operator : MD/SY
 Sample : VU0506WBL01
 Misc : 5.0mL/MSVOA_U/WATER
 ALS Vial : 4 Sample Multiplier: 1

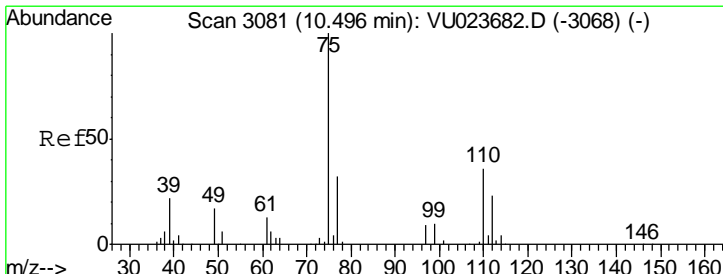
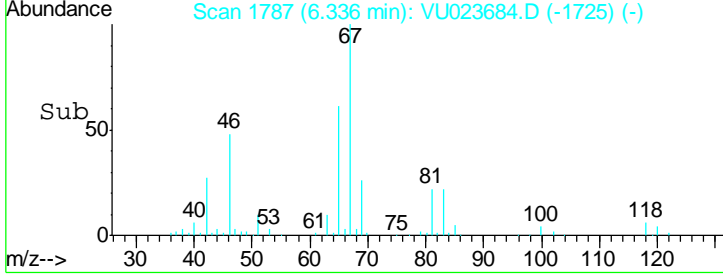
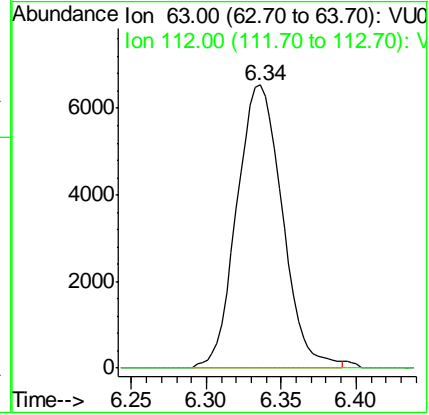
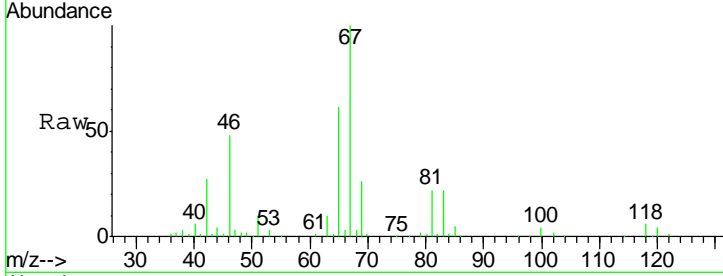
Quant Time: May 07 00:51:33 2018
 Quant Method : W:\HPCHEM1\MSVOA_U\METHOD\SOMULM050118WMA.M
 Quant Title : VOC Analysis
 QLast Update : Mon May 07 00:51:10 2018
 Response via : Initial Calibration





#37
 1,2-Dichloropropane
 Concen: 4.59 ug/L
 RT: 6.34 min Scan# 1787
 Delta R.T. -0.10 min
 Lab File: VU023684.D
 Acq: 06 May 2018 11:54

| Tgt Ion | Resp | Lower | Upper |
|---------|-------|-------|-------|
| 63 | 13868 | | |
| 63 | 100 | | |
| 112 | 0.0 | 3.1 | 4.7# |



#59
 1,2,3-Trichloropropane
 Concen: 4.91 ug/L
 RT: 11.49 min Scan# 3390
 Delta R.T. 0.99 min
 Lab File: VU023684.D
 Acq: 06 May 2018 11:54

| Tgt Ion | Resp | Lower | Upper |
|---------|-------|-------|-------|
| 75 | 16384 | | |
| 75 | 100 | | |
| 77 | 37.0 | 25.9 | 38.9 |

