

Data Path : Z:\voasrv\HPCHEM1\MSVOA\_U\Data\VU050622\  
 Data File : VU048461.D  
 Acq On : 06 May 2022 17:41  
 Operator : SY/MD  
 Sample : N2603-18ME  
 Misc : 7.84g/5.0mL/100uL/5.0mL/MSVOA\_U/MEOH  
 ALS Vial : 14 Sample Multiplier: 1

Instrument :  
 MSVOA\_U  
 ClientSampleId :  
 EW498ME

Integration Parameters: LSCINT.P

Integrator: RTE  
 Smoothing : OFF  
 Sampling : 1  
 Start Thrs: 0.2  
 Stop Thrs : 0

Filtering: 5  
 Min Area: 0 % of largest Peak  
 Max Peaks: 100  
 Peak Location: TOP

If leading or trailing edge < 100 prefer < Baseline drop else tangent >  
 Peak separation: 5

Method : Z:\voasrv\HPCHEM1\MSVOA\_U\Method\SFAMULM050622WMA.M  
 Title : VOC Analysis

Signal : TIC: VU048461.D\data.ms

peak #	R.T. min	first scan	max scan	last scan	PK TY	peak height	corr. area	corr. % max.	% of total
1	1.478	36	43	50	rBV2	9912	16848	0.65%	0.089%
2	1.597	73	80	116	rVB	168613	438452	16.87%	2.321%
3	1.851	153	159	162	rBV	95282	109816	4.23%	0.581%
4	2.533	358	371	402	rBV	457002	881738	33.92%	4.668%
5	2.755	437	440	441	rBV3	1339	820	0.03%	0.004%
6	2.861	471	473	477	rVB2	529	288	0.01%	0.002%
7	2.887	477	481	483	rBV3	543	382	0.01%	0.002%
8	2.954	494	502	503	rBV3	4960	5127	0.20%	0.027%
9	3.035	517	527	539	rVB4	3971	8334	0.32%	0.044%
10	3.086	540	543	547	rBV5	582	379	0.01%	0.002%
11	3.179	555	572	588	rBV2	22184	53130	2.04%	0.281%
12	3.488	663	668	671	rBV3	371	334	0.01%	0.002%
13	3.604	700	704	709	rVB2	381	418	0.02%	0.002%
14	3.662	719	722	729	rBV4	500	588	0.02%	0.003%
15	3.691	729	731	734	rVB2	521	277	0.01%	0.001%
16	3.716	737	739	744	rVB2	286	275	0.01%	0.001%
17	3.816	767	770	774	rBV	822	670	0.03%	0.004%
18	3.935	805	807	815	rVB2	246	253	0.01%	0.001%
19	4.080	844	852	854	rBV	183	250	0.01%	0.001%
20	4.118	861	864	868	rVB	354	264	0.01%	0.001%
21	4.173	877	881	884	rBV2	284	255	0.01%	0.001%
22	4.350	932	936	941	rBV2	351	396	0.02%	0.002%
23	4.437	959	963	968	rVV3	316	301	0.01%	0.002%
24	4.469	968	973	975	rBV2	234	245	0.01%	0.001%
25	4.562	997	1002	1007	rBV3	657	606	0.02%	0.003%
26	4.636	1007	1025	1081	rBV	216375	802900	30.89%	4.250%
27	4.977	1129	1131	1134	rVB	579	295	0.01%	0.002%
28	4.999	1134	1138	1140	rBV3	564	486	0.02%	0.003%
29	5.060	1140	1157	1185	rVV	423482	997684	38.39%	5.281%
30	5.179	1191	1194	1199	rVB4	528	443	0.02%	0.002%
31	5.208	1199	1203	1207	rBV3	376	421	0.02%	0.002%
32	5.279	1223	1225	1227	rBV2	417	295	0.01%	0.002%
33	5.301	1228	1232	1233	rVV2	468	296	0.01%	0.002%
34	5.443	1272	1276	1282	rVB3	500	493	0.02%	0.003%
35	5.578	1311	1318	1321	rVV4	857	939	0.04%	0.005%
36	5.716	1339	1361	1397	rBV2	1008097	2599112	100.00%	13.759%

Data Path : Z:\voasrv\HPCHEM1\MSVOA\_U\Data\VU050622\  
 Data File : VU048461.D  
 Acq On : 06 May 2022 17:41  
 Operator : SY/MD  
 Sample : N2603-18ME  
 Misc : 7.84g/5.0mL/100uL/5.0mL/MSVOA\_U/MEOH  
 ALS Vial : 14 Sample Multiplier: 1

Instrument :  
 MSVOA\_U  
 ClientSampleId :  
 EW498ME

Integration Parameters: LSCINT.P

Integrator: RTE  
 Smoothing : OFF  
 Sampling : 1  
 Start Thrs: 0.2  
 Stop Thrs : 0

Filtering: 5  
 Min Area: 0 % of largest Peak  
 Max Peaks: 100  
 Peak Location: TOP

If leading or trailing edge < 100 prefer < Baseline drop else tangent >  
 Peak separation: 5

Method : Z:\voasrv\HPCHEM1\MSVOA\_U\Method\SFAMULM050622WMA.M  
 Title : VOC Analysis

37	5.874	1407	1410	1413	rVB3	843	538	0.02%	0.003%
38	5.977	1431	1442	1464	rVB4	12286	30887	1.19%	0.164%
39	6.125	1479	1488	1497	rBV7	2328	4199	0.16%	0.022%
40	6.166	1497	1501	1502	rBV2	467	277	0.01%	0.001%
41	6.247	1512	1526	1548	rBV	429191	869392	33.45%	4.602%
42	6.398	1571	1573	1577	rVB2	449	306	0.01%	0.002%
43	6.433	1581	1584	1587	rBV3	406	267	0.01%	0.001%
44	6.523	1603	1612	1625	rBV3	6887	13051	0.50%	0.069%
45	6.604	1625	1637	1648	rBV4	5636	12185	0.47%	0.065%
46	6.690	1648	1664	1689	rBV	564058	1176290	45.26%	6.227%
47	6.935	1737	1740	1742	rBV3	510	412	0.02%	0.002%
48	7.067	1769	1781	1789	rBV8	2598	5013	0.19%	0.027%
49	7.112	1791	1795	1797	rBV2	427	301	0.01%	0.002%
50	7.125	1797	1799	1807	rVB3	533	531	0.02%	0.003%
51	7.189	1807	1819	1820	rBV3	9862	12532	0.48%	0.066%
52	7.305	1851	1855	1856	rBV	491	291	0.01%	0.002%
53	7.321	1857	1860	1865	rVV5	548	594	0.02%	0.003%
54	7.346	1865	1868	1871	rVB2	456	261	0.01%	0.001%
55	7.424	1886	1892	1893	rBV3	597	530	0.02%	0.003%
56	7.456	1899	1902	1904	rBV3	572	392	0.02%	0.002%
57	7.497	1904	1915	1922	rVV6	6121	10523	0.40%	0.056%
58	7.565	1922	1936	1958	rVV	300936	587237	22.59%	3.109%
59	7.652	1959	1963	1971	rVB5	2592	3229	0.12%	0.017%
60	7.825	2015	2017	2018	rBV2	629	257	0.01%	0.001%
61	7.896	2025	2039	2057	rBV	1130197	2101271	80.85%	11.124%
62	8.128	2104	2111	2117	rBV3	6608	9214	0.35%	0.049%
63	8.182	2117	2128	2152	rVB	192542	406808	15.65%	2.154%
64	8.350	2177	2180	2181	rBV2	853	455	0.02%	0.002%
65	8.407	2193	2198	2200	rBV6	684	668	0.03%	0.004%
66	8.430	2200	2205	2213	rVV7	1847	2283	0.09%	0.012%
67	8.536	2230	2238	2246	rBV8	4182	7361	0.28%	0.039%
68	8.655	2258	2275	2302	rBV	790912	1719416	66.15%	9.102%
69	8.922	2349	2358	2370	rBV3	16867	29175	1.12%	0.154%
70	9.018	2386	2388	2391	rBV2	585	421	0.02%	0.002%
71	9.067	2391	2403	2412	rVB10	5004	9578	0.37%	0.051%
72	9.118	2412	2419	2426	rBV6	4315	6743	0.26%	0.036%
73	9.166	2426	2434	2441	rBV8	6489	11409	0.44%	0.060%
74	9.337	2476	2487	2499	rBV4	8629	15601	0.60%	0.083%
75	9.420	2499	2513	2539	rBV	573707	1116753	42.97%	5.912%
76	9.523	2543	2545	2549	rVB	746	367	0.01%	0.002%

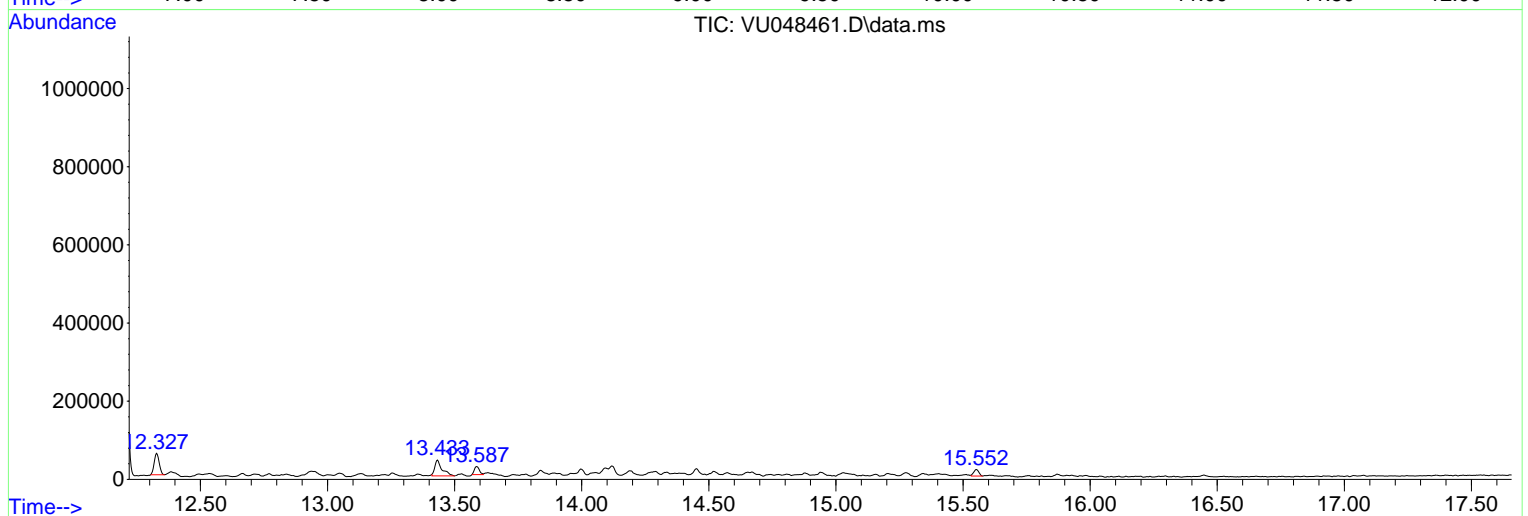
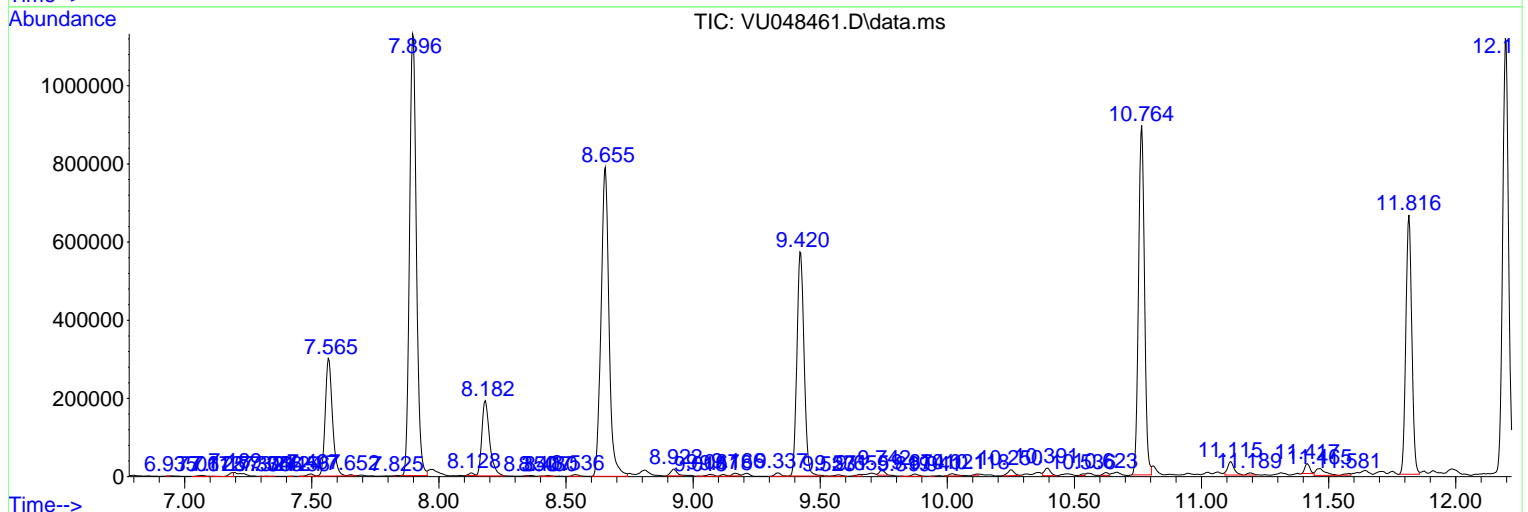
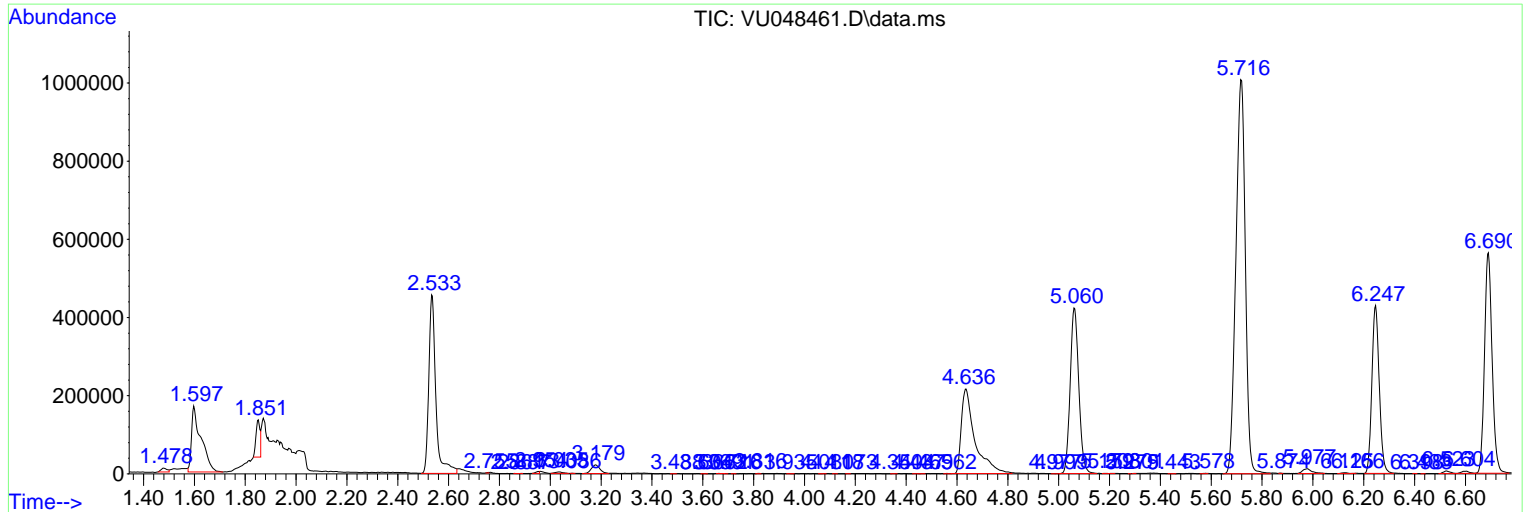


Data Path : Z:\voasrv\HPCHEM1\MSVOA\_U\Data\VU050622\  
 Data File : VU048461.D  
 Acq On : 06 May 2022 17:41  
 Operator : SY/MD  
 Sample : N2603-18ME  
 Misc : 7.84g/5.0mL/100uL/5.0mL/MSVOA\_U/MEOH  
 ALS Vial : 14 Sample Multiplier: 1

Instrument :  
 MSVOA\_U  
 ClientSampleId :  
 EW498ME

Quant Method : Z:\voasrv\HPCHEM1\MSVOA\_U\Method\SFAMULM050622WMA.M  
 Quant Title : VOC Analysis

TIC Library : C:\Database\NIST20.L  
 TIC Integration Parameters: LSCINT.P



Data Path : Z:\voasrv\HPCHEM1\MSVOA\_U\Data\VU050622\  
 Data File : VU048461.D  
 Acq On : 06 May 2022 17:41  
 Operator : SY/MD  
 Sample : N2603-18ME  
 Misc : 7.84g/5.0mL/100uL/5.0mL/MSVOA\_U/MEOH  
 ALS Vial : 14 Sample Multiplier: 1

Instrument :  
 MSVOA\_U  
 ClientSampleId :  
 EW498ME

Quant Method : Z:\voasrv\HPCHEM1\MSVOA\_U\Method\SFAMULM050622WMA.M  
 Quant Title : VOC Analysis

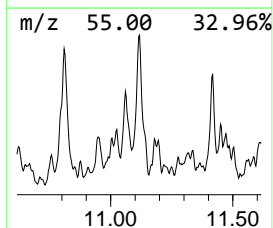
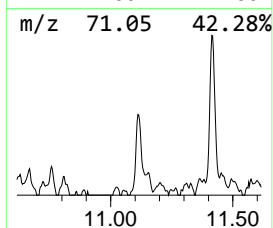
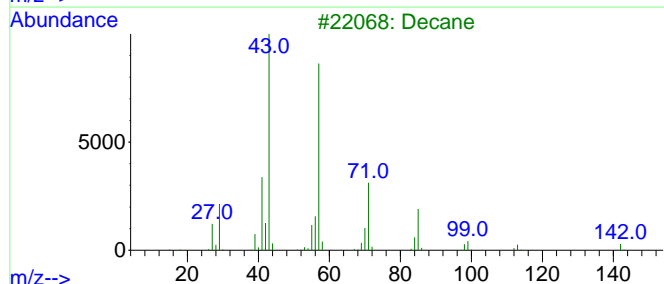
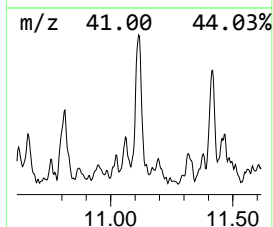
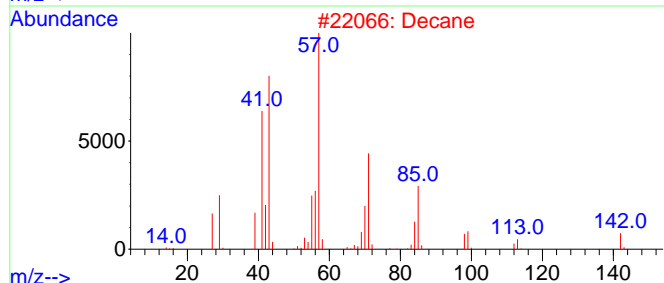
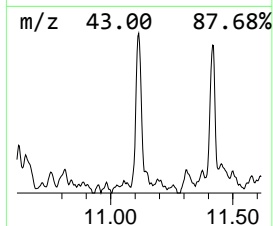
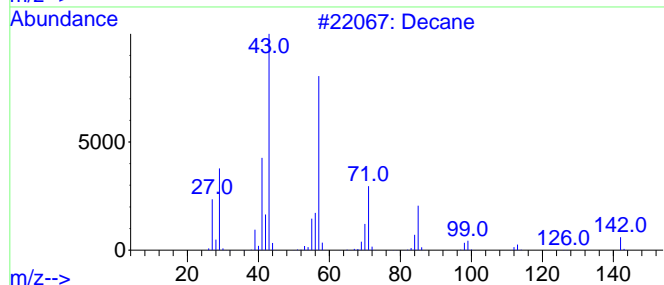
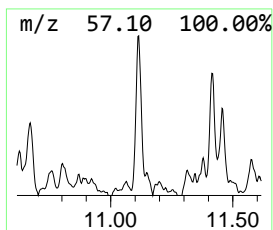
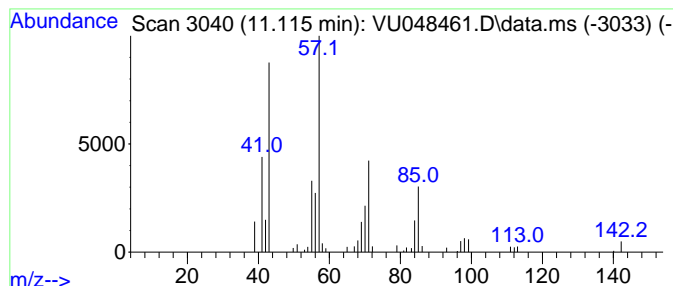
TIC Library : C:\Database\NIST20.L  
 TIC Integration Parameters: LSCINT.P

\*\*\*\*\*  
 Peak Number 3 (DEL) Alkane: Straight-Chai... Concentration Rank 5

R.T.	EstConc	Area	Relative to ISTD	R.T.
11.115	2.82 ug/L	60129	1,4-Dichlorobenzene-d4	11.816

Hit# of 5	Tentative ID	MW	MolForm	CAS#	Qual
1	Decane	142	C10H22	000124-18-5	90
2	Decane	142	C10H22	000124-18-5	86
3	Decane	142	C10H22	000124-18-5	72
4	Nonane	128	C9H20	000111-84-2	59
5	Octane	114	C8H18	000111-65-9	59



Data Path : Z:\voasrv\HPCHEM1\MSVOA\_U\Data\VU050622\  
 Data File : VU048461.D  
 Acq On : 06 May 2022 17:41  
 Operator : SY/MD  
 Sample : N2603-18ME  
 Misc : 7.84g/5.0mL/100uL/5.0mL/MSVOA\_U/MEOH  
 ALS Vial : 14 Sample Multiplier: 1

Instrument :  
 MSVOA\_U  
 ClientSampleId :  
 EW498ME

Quant Method : Z:\voasrv\HPCHEM1\MSVOA\_U\Method\SFAMULM050622WMA.M  
 Quant Title : VOC Analysis

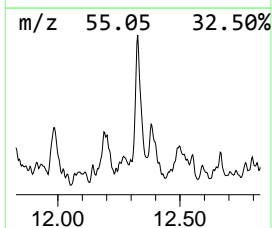
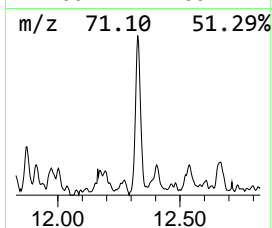
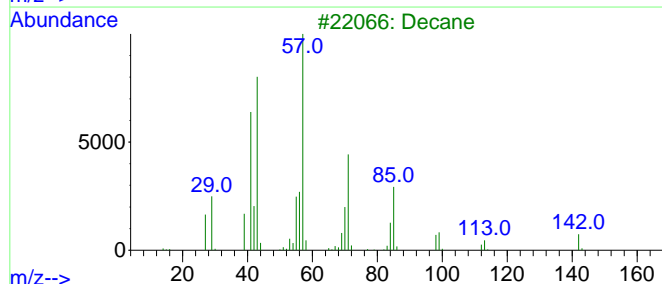
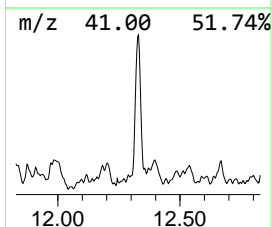
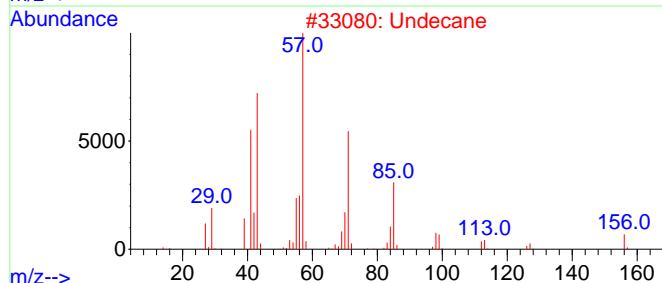
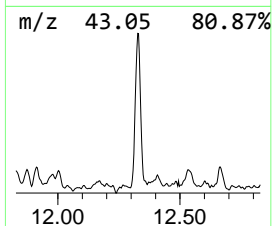
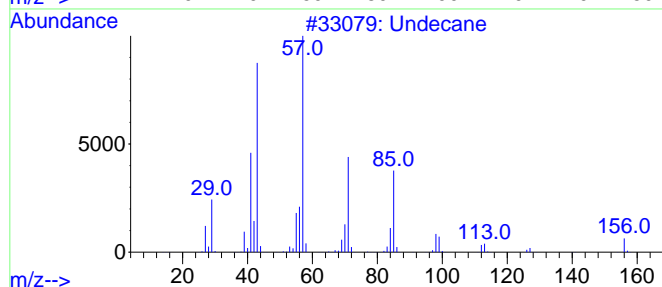
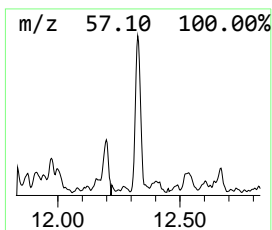
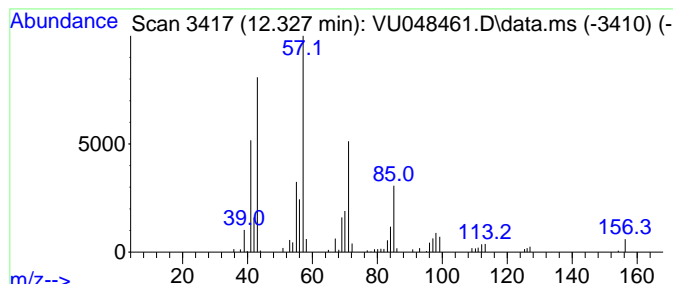
TIC Library : C:\Database\NIST20.L  
 TIC Integration Parameters: LSCINT.P

\*\*\*\*\*  
 Peak Number 4 (DEL) Alkane: Straight-Chai... Concentration Rank 3

R.T.	EstConc	Area	Relative to ISTD	R.T.
12.327	3.49 ug/L	74438	1,4-Dichlorobenzene-d4	11.816

Hit# of 5	Tentative ID	MW	MolForm	CAS#	Qual
1	Undecane	156	C11H24	001120-21-4	97
2	Undecane	156	C11H24	001120-21-4	96
3	Decane	142	C10H22	000124-18-5	90
4	Decane	142	C10H22	000124-18-5	90
5	Undecane	156	C11H24	001120-21-4	87



Data Path : Z:\voasrv\HPCHEM1\MSVOA\_U\Data\VU050622\  
 Data File : VU048461.D  
 Acq On : 06 May 2022 17:41  
 Operator : SY/MD  
 Sample : N2603-18ME  
 Misc : 7.84g/5.0mL/100uL/5.0mL/MSVOA\_U/MEOH  
 ALS Vial : 14 Sample Multiplier: 1

Instrument :  
 MSVOA\_U  
 ClientSampleId :  
 EW498ME

Quant Method : Z:\voasrv\HPCHEM1\MSVOA\_U\Method\SFAMULM050622WMA.M  
 Quant Title : VOC Analysis

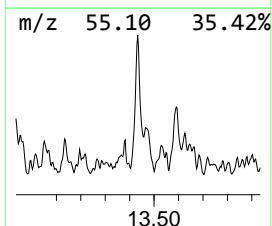
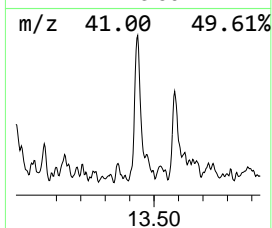
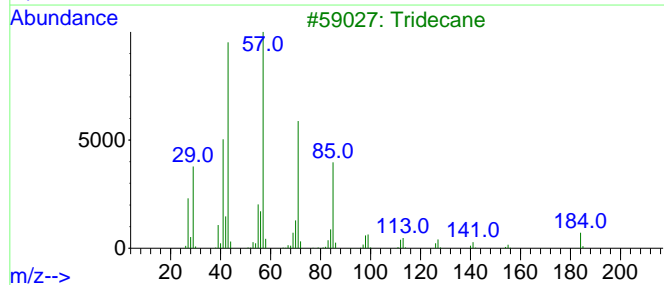
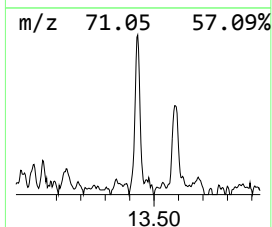
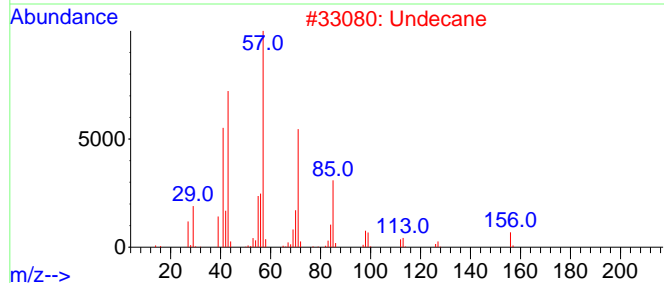
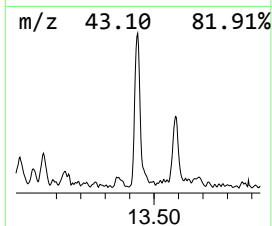
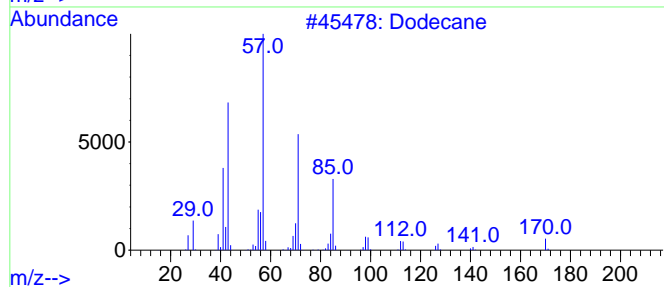
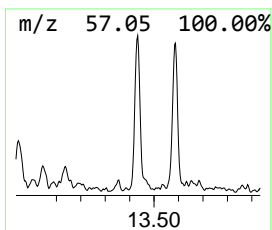
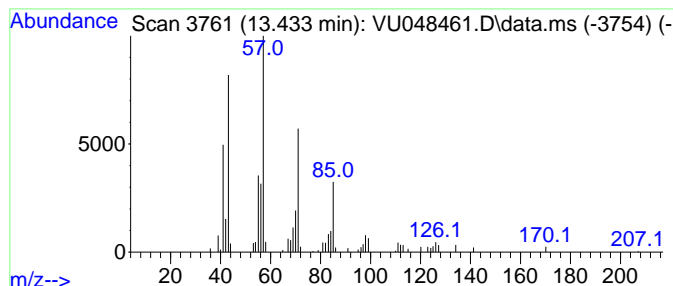
TIC Library : C:\Database\NIST20.L  
 TIC Integration Parameters: LSCINT.P

\*\*\*\*\*  
 Peak Number 5 (DEL) Alkane: Straight-Chai... Concentration Rank 2

R.T.	EstConc	Area	Relative to ISTD	R.T.
13.433	3.74 ug/L	79926	1,4-Dichlorobenzene-d4	11.816

Hit# of 5	Tentative ID	MW	MolForm	CAS#	Qual
1	Dodecane	170	C12H26	000112-40-3	81
2	Undecane	156	C11H24	001120-21-4	80
3	Tridecane	184	C13H28	000629-50-5	80
4	Tridecane	184	C13H28	000629-50-5	64
5	Tetradecane	198	C14H30	000629-59-4	64



Data Path : Z:\voasrv\HPCHEM1\MSVOA\_U\Data\VU050622\  
Data File : VU048461.D  
Acq On : 06 May 2022 17:41  
Operator : SY/MD  
Sample : N2603-18ME  
Misc : 7.84g/5.0mL/100uL/5.0mL/MSVOA\_U/MEOH  
ALS Vial : 14 Sample Multiplier: 1

Instrument :  
MSVOA\_U  
ClientSampleId :  
EW498ME

Quant Method : Z:\voasrv\HPCHEM1\MSVOA\_U\Method\SFAMULM050622WMA.M  
Quant Title : VOC Analysis

TIC Library : C:\Database\NIST20.L  
TIC Integration Parameters: LSCINT.P

TIC Top Hit name	RT	EstConc	Units	Response	--Internal Standard--			
					#	RT	Resp	Conc
(DEL) Alkane: S...	11.115	2.8	ug/L	60129	3	11.816	1067800	50.0
(DEL) Alkane: S...	12.327	3.5	ug/L	74438	3	11.816	1067800	50.0
(DEL) Alkane: S...	13.433	3.7	ug/L	79926	3	11.816	1067800	50.0