

Data Path : Z:\voasrv\HPCHEM1\MSVOA\_U\Data\VU050622\  
 Data File : VU048471.D  
 Acq On : 06 May 2022 21:41  
 Operator : SY/MD  
 Sample : N2710-17  
 Misc : 5.0mL/MSVOA\_U/WATER  
 ALS Vial : 24 Sample Multiplier: 1

Instrument :  
 MSVOA\_U  
 ClientSampleId :  
 EXLA6

Integration Parameters: LSCINT.P

Integrator: RTE  
 Smoothing : OFF  
 Sampling : 1  
 Start Thrs: 0.2  
 Stop Thrs : 0

Filtering: 5  
 Min Area: 0 % of largest Peak  
 Max Peaks: 100  
 Peak Location: TOP

If leading or trailing edge < 100 prefer < Baseline drop else tangent >  
 Peak separation: 5

Method : Z:\voasrv\HPCHEM1\MSVOA\_U\Method\SFAMULM050622WMA.M  
 Title : VOC Analysis

Signal : TIC: VU048471.D\data.ms

peak #	R.T. min	first scan	max scan	last scan	PK TY	peak height	corr. area	corr. % max.	% of total
1	1.600	73	81	99	rBV	191867	241486	14.52%	1.893%
2	1.912	170	178	198	rVB	140671	202179	12.16%	1.584%
3	2.282	291	293	295	rBV3	919	391	0.02%	0.003%
4	2.501	359	361	364	rVB2	472	244	0.01%	0.002%
5	2.568	369	382	398	rBV	356727	587137	35.31%	4.601%
6	2.742	431	436	438	rBV2	337	319	0.02%	0.003%
7	2.777	444	447	448	rBV	584	292	0.02%	0.002%
8	2.793	448	452	456	rVB4	736	738	0.04%	0.006%
9	2.845	466	468	476	rVB2	358	326	0.02%	0.003%
10	2.912	486	489	492	rBV4	359	255	0.02%	0.002%
11	3.057	525	534	541	rVV4	783	892	0.05%	0.007%
12	3.137	555	559	565	rBV2	284	275	0.02%	0.002%
13	3.186	571	574	577	rVV2	425	314	0.02%	0.002%
14	3.218	581	584	588	rVB2	371	257	0.02%	0.002%
15	3.745	743	748	752	rBV2	429	577	0.03%	0.005%
16	3.768	752	755	760	rVB	301	290	0.02%	0.002%
17	3.825	770	773	778	rBV2	257	258	0.02%	0.002%
18	3.944	806	810	814	rBV	314	240	0.01%	0.002%
19	3.999	822	827	829	rBV2	365	350	0.02%	0.003%
20	4.626	1008	1022	1054	rBV	179337	454792	27.35%	3.564%
21	4.809	1076	1079	1082	rBV2	588	469	0.03%	0.004%
22	4.893	1103	1105	1109	rVB	663	333	0.02%	0.003%
23	5.067	1142	1159	1184	rVV	293346	645294	38.80%	5.057%
24	5.176	1190	1193	1199	rVB3	533	477	0.03%	0.004%
25	5.285	1223	1227	1229	rBV2	429	349	0.02%	0.003%
26	5.726	1340	1364	1393	rBV2	615926	1663035	100.00%	13.033%
27	5.977	1439	1442	1446	rBV3	511	443	0.03%	0.003%
28	6.031	1457	1459	1463	rBV4	437	264	0.02%	0.002%
29	6.250	1513	1527	1550	rBV	476642	914623	55.00%	7.168%
30	6.481	1593	1599	1603	rVB2	410	438	0.03%	0.003%
31	6.530	1608	1614	1621	rVV5	1554	2498	0.15%	0.020%
32	6.690	1650	1664	1690	rBV	387864	754076	45.34%	5.910%
33	6.841	1708	1711	1715	rVB3	577	366	0.02%	0.003%
34	7.185	1810	1818	1830	rVB4	2950	4891	0.29%	0.038%
35	7.523	1916	1923	1924	rBV	309	273	0.02%	0.002%
36	7.568	1924	1937	1958	rVV	195345	351391	21.13%	2.754%

Data Path : Z:\voasrv\HPCHEM1\MSVOA\_U\Data\VU050622\  
 Data File : VU048471.D  
 Acq On : 06 May 2022 21:41  
 Operator : SY/MD  
 Sample : N2710-17  
 Misc : 5.0mL/MSVOA\_U/WATER  
 ALS Vial : 24 Sample Multiplier: 1

Instrument :  
 MSVOA\_U  
 ClientSampleId :  
 EXLA6

Integration Parameters: LSCINT.P

Integrator: RTE  
 Smoothing : OFF  
 Sampling : 1  
 Start Thrs: 0.2  
 Stop Thrs : 0

Filtering: 5  
 Min Area: 0 % of largest Peak  
 Max Peaks: 100  
 Peak Location: TOP

If leading or trailing edge < 100 prefer < Baseline drop else tangent >  
 Peak separation: 5

Method : Z:\voasrv\HPCHEM1\MSVOA\_U\Method\SFAMULM050622WMA.M  
 Title : VOC Analysis

37	7.690	1969	1975	1990	rVB6	1885	3526	0.21%	0.028%
38	7.835	2017	2020	2023	rVB2	441	249	0.01%	0.002%
39	7.899	2023	2040	2058	rBV	715530	1252866	75.34%	9.819%
40	8.050	2085	2087	2090	rBV2	534	313	0.02%	0.002%
41	8.179	2115	2127	2145	rBV	137306	237453	14.28%	1.861%
42	8.337	2175	2176	2182	rVB2	466	322	0.02%	0.003%
43	8.475	2216	2219	2220	rBV2	499	304	0.02%	0.002%
44	8.555	2230	2244	2258	rBV	541626	934863	56.21%	7.327%
45	8.636	2258	2269	2322	rVB2	525123	1017914	61.21%	7.977%
46	8.896	2343	2350	2351	rBV3	373	405	0.02%	0.003%
47	8.909	2352	2354	2358	rVV	586	424	0.03%	0.003%
48	8.935	2359	2362	2364	rVB2	421	261	0.02%	0.002%
49	9.156	2428	2431	2434	rVV2	508	476	0.03%	0.004%
50	9.185	2438	2440	2444	rVB2	505	334	0.02%	0.003%
51	9.227	2450	2453	2458	rVB2	340	267	0.02%	0.002%
52	9.333	2484	2486	2494	rVB2	435	352	0.02%	0.003%
53	9.417	2499	2512	2550	rBV	667309	1113178	66.94%	8.724%
54	9.574	2556	2561	2566	rBV3	607	595	0.04%	0.005%
55	9.697	2592	2599	2605	rVB4	850	1326	0.08%	0.010%
56	9.951	2674	2678	2680	rBV2	443	274	0.02%	0.002%
57	10.102	2723	2725	2729	rVB	461	334	0.02%	0.003%
58	10.510	2848	2852	2857	rVB	483	405	0.02%	0.003%
59	10.539	2857	2861	2866	rBV2	361	431	0.03%	0.003%
60	10.671	2893	2902	2903	rBV2	1073	1195	0.07%	0.009%
61	10.758	2915	2929	2946	rBV	430854	694292	41.75%	5.441%
62	10.896	2962	2972	2981	rVV4	2622	4552	0.27%	0.036%
63	11.005	3002	3006	3009	rBV	457	403	0.02%	0.003%
64	11.266	3081	3087	3088	rBV	463	359	0.02%	0.003%
65	11.298	3093	3097	3099	rBV	320	251	0.02%	0.002%
66	11.340	3104	3110	3114	rBV2	387	400	0.02%	0.003%
67	11.455	3141	3146	3148	rBV2	908	766	0.05%	0.006%
68	11.533	3161	3170	3175	rBV2	395	639	0.04%	0.005%
69	11.555	3175	3177	3181	rBV	293	236	0.01%	0.002%
70	11.652	3205	3207	3211	rVB	585	375	0.02%	0.003%
71	11.677	3211	3215	3217	rBV2	312	291	0.02%	0.002%
72	11.700	3217	3222	3227	rVB3	476	530	0.03%	0.004%
73	11.748	3235	3237	3243	rBV2	662	637	0.04%	0.005%
74	11.812	3245	3257	3275	rBV	507150	806107	48.47%	6.318%
75	11.899	3282	3284	3287	rVB4	400	238	0.01%	0.002%
76	11.928	3287	3293	3296	rBV4	629	616	0.04%	0.005%

Data Path : Z:\voasrv\HPCHEM1\MSVOA\_U\Data\VU050622\  
 Data File : VU048471.D  
 Acq On : 06 May 2022 21:41  
 Operator : SY/MD  
 Sample : N2710-17  
 Misc : 5.0mL/MSVOA\_U/WATER  
 ALS Vial : 24 Sample Multiplier: 1

Instrument :  
 MSVOA\_U  
 ClientSampleId :  
 EXLA6

Integration Parameters: LSCINT.P

Integrator: RTE  
 Smoothing : OFF  
 Sampling : 1  
 Start Thrs : 0.2  
 Stop Thrs : 0

Filtering: 5  
 Min Area: 0 % of largest Peak  
 Max Peaks: 100  
 Peak Location: TOP

If leading or trailing edge < 100 prefer < Baseline drop else tangent >  
 Peak separation: 5

Method : Z:\voasrv\HPCHEM1\MSVOA\_U\Method\SFAMULM050622WMA.M  
 Title : VOC Analysis

77	11.951	3297	3300	3304	rVV5	468	375	0.02%	0.003%
78	12.070	3327	3337	3347	rBV7	3198	6565	0.39%	0.051%
79	12.192	3359	3375	3396	rBV	518252	832291	50.05%	6.523%
80	12.285	3401	3404	3407	rBV3	595	367	0.02%	0.003%
81	12.330	3416	3418	3421	rVB2	599	314	0.02%	0.002%
82	12.423	3443	3447	3456	rVB2	679	846	0.05%	0.007%
83	12.494	3466	3469	3471	rBV2	326	245	0.01%	0.002%
84	13.188	3683	3685	3690	rVB3	286	242	0.01%	0.002%
85	13.217	3690	3694	3698	rVB2	582	458	0.03%	0.004%
86	13.272	3707	3711	3714	rBV	289	246	0.01%	0.002%
87	13.288	3714	3716	3723	rVB2	361	302	0.02%	0.002%
88	13.359	3734	3738	3741	rBV2	429	358	0.02%	0.003%
89	13.394	3746	3749	3752	rBV2	402	263	0.02%	0.002%
90	13.468	3769	3772	3778	rBV2	363	380	0.02%	0.003%
91	13.639	3823	3825	3829	rVB	517	327	0.02%	0.003%
92	13.709	3845	3847	3851	rVB3	439	262	0.02%	0.002%
93	13.774	3865	3867	3870	rBV2	385	269	0.02%	0.002%
94	13.796	3870	3874	3877	rVV2	533	462	0.03%	0.004%
95	13.844	3885	3889	3892	rBV3	695	582	0.03%	0.005%
96	13.928	3911	3915	3921	rBV2	569	644	0.04%	0.005%
97	14.102	3961	3969	3975	rBV5	1876	2836	0.17%	0.022%
98	14.436	4070	4073	4075	rBV2	477	353	0.02%	0.003%
99	14.520	4096	4099	4101	rBV2	523	312	0.02%	0.002%
100	14.674	4143	4147	4155	rBV3	802	936	0.06%	0.007%

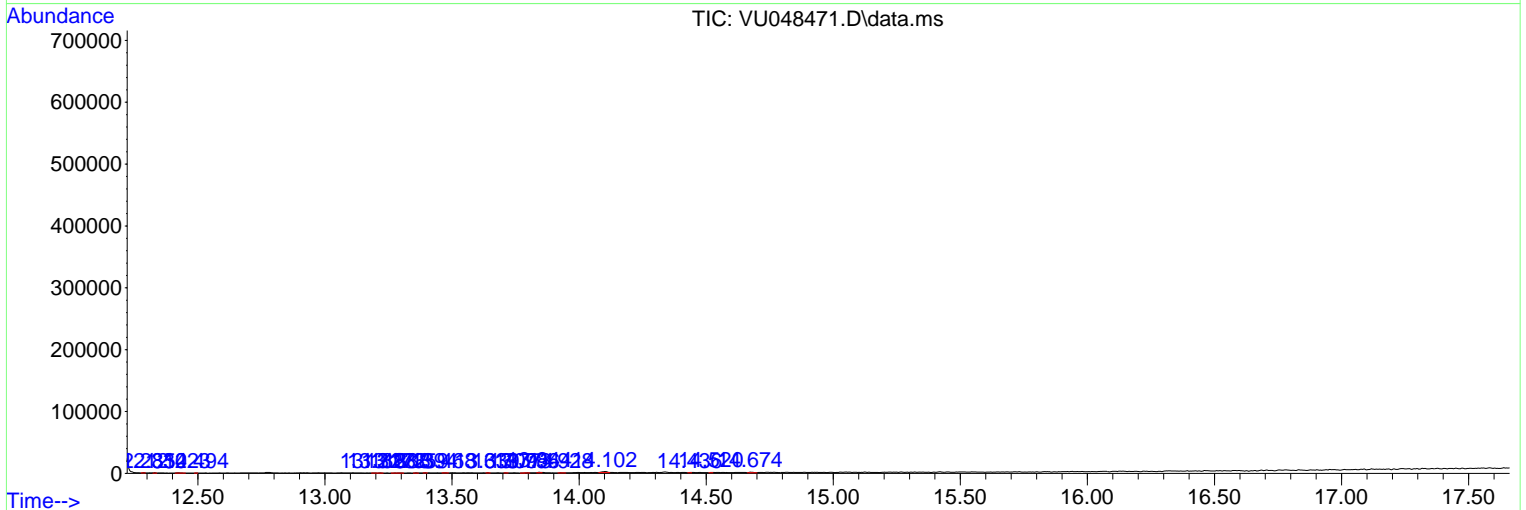
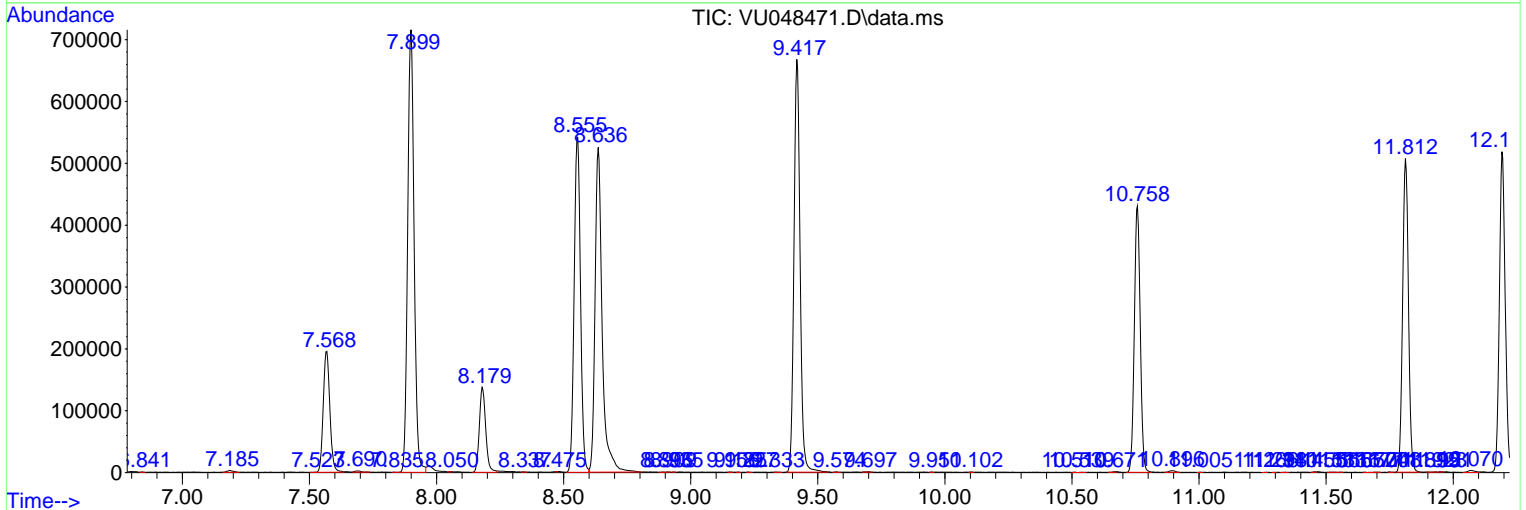
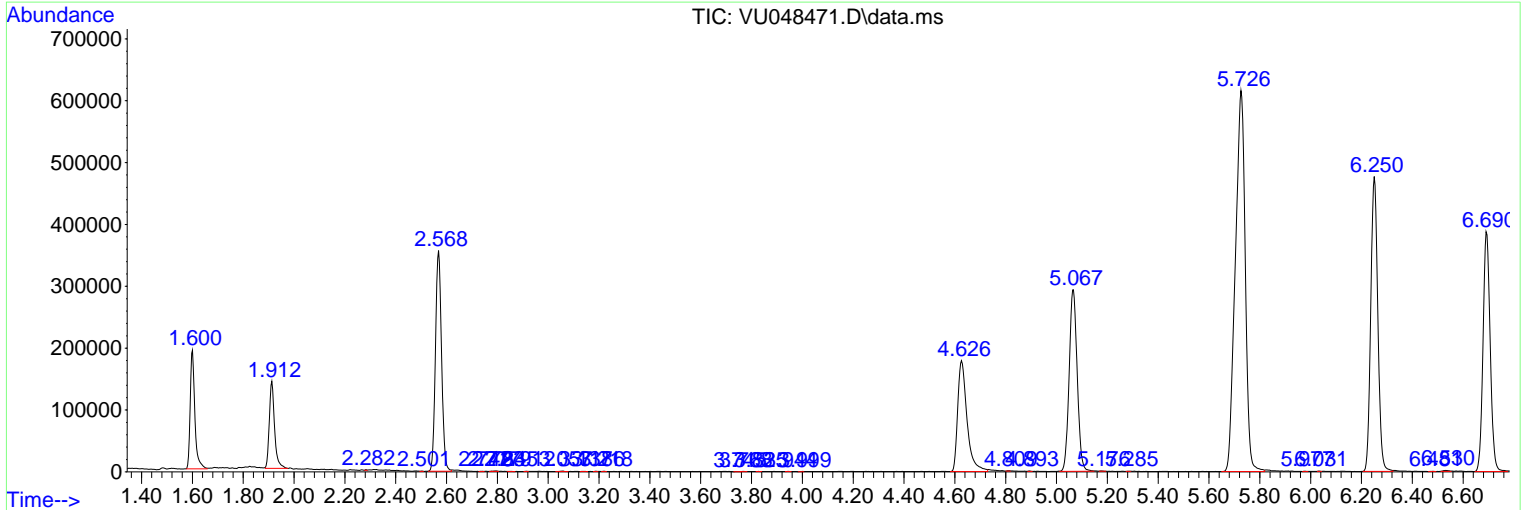
Sum of corrected areas: 12759826

Data Path : Z:\voasrv\HPCHEM1\MSVOA\_U\Data\VU050622\  
 Data File : VU048471.D  
 Acq On : 06 May 2022 21:41  
 Operator : SY/MD  
 Sample : N2710-17  
 Misc : 5.0mL/MSVOA\_U/WATER  
 ALS Vial : 24 Sample Multiplier: 1

Instrument :  
 MSVOA\_U  
 ClientSampleId :  
 EXLA6

Quant Method : Z:\voasrv\HPCHEM1\MSVOA\_U\Method\SFAMULM050622WMA.M  
 Quant Title : VOC Analysis

TIC Library : C:\Database\NIST20.L  
 TIC Integration Parameters: LSCINT.P



Library Search Compound Report

Data Path : Z:\voasrv\HPCHEM1\MSVOA\_U\Data\VU050622\  
Data File : VU048471.D  
Acq On : 06 May 2022 21:41  
Operator : SY/MD  
Sample : N2710-17  
Misc : 5.0mL/MSVOA\_U/WATER  
ALS Vial : 24 Sample Multiplier: 1

Instrument :  
MSVOA\_U  
ClientSampleId :  
EXLA6

Quant Method : Z:\voasrv\HPCHEM1\MSVOA\_U\Method\SFAMULM050622WMA.M  
Quant Title : VOC Analysis

TIC Library : C:\Database\NIST20.L  
TIC Integration Parameters: LSCINT.P

No Library Search Compounds Detected

\*\*\*\*\*

Data Path : Z:\voasrv\HPCHEM1\MSVOA\_U\Data\VU050622\  
Data File : VU048471.D  
Acq On : 06 May 2022 21:41  
Operator : SY/MD  
Sample : N2710-17  
Misc : 5.0mL/MSVOA\_U/WATER  
ALS Vial : 24 Sample Multiplier: 1

Instrument :  
MSVOA\_U  
ClientSampleId :  
EXLA6

Quant Method : Z:\voasrv\HPCHEM1\MSVOA\_U\Method\SFAMULM050622WMA.M  
Quant Title : VOC Analysis

TIC Library : C:\Database\NIST0.L  
TIC Integration Parameters: LSCINT.P

TIC Top Hit name	RT	EstConc	Units	Response	--Internal Standard--		
					#	RT	Resp Conc

---