

Data Path : Z:\voasrv\HPCHEM1\MSVOA_U\Data\VU050923\
 Data File : VU054117.D
 Acq On : 09 May 2023 11:16
 Operator : JC/MD
 Sample : 02662-13
 Misc : 5.0mL/MSVOA_U/WATER
 ALS Vial : 6 Sample Multiplier: 1

Instrument :
 MSVOA_U
 ClientSampleId :
 VHBLK001

Integration Parameters: LSCINT.P

Integrator: RTE
 Smoothing : OFF
 Sampling : 1
 Start Thrs: 0.2
 Stop Thrs : 0

Filtering: 5
 Min Area: 0 % of largest Peak
 Max Peaks: 100
 Peak Location: TOP

If leading or trailing edge < 100 prefer < Baseline drop else tangent >
 Peak separation: 5

Method : Z:\voasrv\HPCHEM1\MSVOA_U\Method\SFAMULM042923WMA.M
 Title : VOC Analysis

Signal : TIC: VU054117.D\data.ms

peak #	R.T. min	first scan	max scan	last scan	PK TY	peak height	corr. area	corr. % max.	% of total
1	1.597	73	80	98	rVB	89571	110053	12.87%	1.716%
2	1.909	169	177	201	rVB	68171	98147	11.48%	1.530%
3	2.562	368	380	396	rBV	169632	277343	32.43%	4.324%
4	2.652	406	408	410	rBV2	527	174	0.02%	0.003%
5	2.700	421	423	427	rBV2	362	225	0.03%	0.004%
6	2.957	500	503	508	rBV2	238	201	0.02%	0.003%
7	3.041	521	529	539	rBV3	2101	3861	0.45%	0.060%
8	3.099	544	547	550	rBV	176	130	0.02%	0.002%
9	3.343	621	623	625	rBV	158	94	0.01%	0.001%
10	3.407	640	643	644	rBV	156	65	0.01%	0.001%
11	3.562	687	691	694	rVB2	349	232	0.03%	0.004%
12	3.604	701	704	706	rBV	172	108	0.01%	0.002%
13	3.864	782	785	788	rBV	197	179	0.02%	0.003%
14	3.993	822	825	828	rBV	152	94	0.01%	0.001%
15	4.121	862	865	868	rVB2	354	252	0.03%	0.004%
16	4.141	868	871	877	rBV	308	348	0.04%	0.005%
17	4.247	901	904	907	rBV	185	114	0.01%	0.002%
18	4.401	950	952	954	rBV2	195	127	0.01%	0.002%
19	4.478	973	976	981	rBV2	216	198	0.02%	0.003%
20	4.504	982	984	986	rVV	155	70	0.01%	0.001%
21	4.536	991	994	996	rBV	185	147	0.02%	0.002%
22	4.555	997	1000	1006	rBV2	279	258	0.03%	0.004%
23	4.620	1009	1020	1056	rBV	69193	176967	20.69%	2.759%
24	4.919	1108	1113	1117	rBV2	403	455	0.05%	0.007%
25	4.938	1117	1119	1121	rBV	245	136	0.02%	0.002%
26	4.983	1129	1133	1135	rBV	275	192	0.02%	0.003%
27	4.996	1135	1137	1138	rBV	245	86	0.01%	0.001%
28	5.057	1140	1156	1180	rVV	157090	346959	40.57%	5.410%
29	5.324	1235	1239	1240	rBV	243	139	0.02%	0.002%
30	5.411	1264	1266	1267	rBV	152	71	0.01%	0.001%
31	5.446	1274	1277	1279	rBV	187	107	0.01%	0.002%
32	5.513	1294	1298	1302	rBV2	318	309	0.04%	0.005%
33	5.533	1302	1304	1306	rBV	142	88	0.01%	0.001%
34	5.546	1306	1308	1310	rBV	156	92	0.01%	0.001%
35	5.719	1340	1362	1390	rBV2	309371	855282	100.00%	13.335%
36	6.031	1456	1459	1466	rVB2	394	442	0.05%	0.007%

Data Path : Z:\voasrv\HPCHEM1\MSVOA_U\Data\VU050923\
 Data File : VU054117.D
 Acq On : 09 May 2023 11:16
 Operator : JC/MD
 Sample : 02662-13
 Misc : 5.0mL/MSVOA_U/WATER
 ALS Vial : 6 Sample Multiplier: 1

Instrument :
 MSVOA_U
 ClientSampleId :
 VHBLK001

Integration Parameters: LSCINT.P

Integrator: RTE
 Smoothing : OFF
 Sampling : 1
 Start Thrs : 0.2
 Stop Thrs : 0

Filtering: 5
 Min Area: 0 % of largest Peak
 Max Peaks: 100
 Peak Location: TOP

If leading or trailing edge < 100 prefer < Baseline drop else tangent >
 Peak separation: 5

Method : Z:\voasrv\HPCHEM1\MSVOA_U\Method\SFAMULM042923WMA.M
 Title : VOC Analysis

37	6.066	1466	1470	1473	rBV2	312	313	0.04%	0.005%
38	6.124	1485	1488	1493	rVB2	280	229	0.03%	0.004%
39	6.169	1500	1502	1505	rVB	162	68	0.01%	0.001%
40	6.243	1512	1525	1547	rBV	259648	493862	57.74%	7.700%
41	6.475	1595	1597	1599	rVB2	193	81	0.01%	0.001%
42	6.497	1599	1604	1605	rBV	123	117	0.01%	0.002%
43	6.523	1605	1612	1614	rBV3	2465	2645	0.31%	0.041%
44	6.571	1625	1627	1630	rVV	204	93	0.01%	0.001%
45	6.629	1643	1645	1649	rBV2	196	182	0.02%	0.003%
46	6.684	1649	1662	1684	rBV	202169	389293	45.52%	6.070%
47	6.838	1707	1710	1715	rBV2	293	277	0.03%	0.004%
48	6.931	1737	1739	1741	rBV	142	69	0.01%	0.001%
49	6.989	1755	1757	1760	rVB2	220	124	0.01%	0.002%
50	7.005	1760	1762	1764	rBV	181	121	0.01%	0.002%
51	7.070	1778	1782	1785	rBV	207	235	0.03%	0.004%
52	7.089	1785	1788	1790	rBV	195	144	0.02%	0.002%
53	7.182	1812	1817	1819	rBV2	679	594	0.07%	0.009%
54	7.253	1836	1839	1844	rBV2	200	190	0.02%	0.003%
55	7.292	1848	1851	1855	rVB	277	252	0.03%	0.004%
56	7.340	1863	1866	1872	rBV2	217	141	0.02%	0.002%
57	7.365	1872	1874	1876	rBV	110	64	0.01%	0.001%
58	7.385	1878	1880	1884	rVB	214	83	0.01%	0.001%
59	7.558	1922	1934	1960	rBV2	108736	193144	22.58%	3.011%
60	7.681	1970	1972	1973	rBV2	271	121	0.01%	0.002%
61	7.690	1973	1975	1979	rVB2	489	316	0.04%	0.005%
62	7.793	2000	2007	2009	rBV3	476	421	0.05%	0.007%
63	7.893	2025	2038	2066	rBV	384310	670556	78.40%	10.455%
64	8.086	2094	2098	2104	rBV3	290	304	0.04%	0.005%
65	8.131	2110	2112	2115	rBV	247	135	0.02%	0.002%
66	8.173	2115	2125	2146	rBV	76338	133107	15.56%	2.075%
67	8.304	2164	2166	2167	rBV	182	65	0.01%	0.001%
68	8.436	2205	2207	2210	rBV	207	141	0.02%	0.002%
69	8.545	2238	2241	2246	rBV3	434	301	0.04%	0.005%
70	8.629	2256	2267	2299	rBV2	207392	392295	45.87%	6.116%
71	8.925	2355	2359	2362	rVB2	319	219	0.03%	0.003%
72	9.105	2412	2415	2419	rBV2	254	200	0.02%	0.003%
73	9.144	2423	2427	2429	rBV2	220	199	0.02%	0.003%
74	9.189	2437	2441	2445	rBV2	274	294	0.03%	0.005%
75	9.243	2452	2458	2460	rBV	188	189	0.02%	0.003%
76	9.333	2483	2486	2490	rBV2	229	135	0.02%	0.002%

Data Path : Z:\voasrv\HPCHEM1\MSVOA_U\Data\VU050923\
 Data File : VU054117.D
 Acq On : 09 May 2023 11:16
 Operator : JC/MD
 Sample : 02662-13
 Misc : 5.0mL/MSVOA_U/WATER
 ALS Vial : 6 Sample Multiplier: 1

Instrument :
 MSVOA_U
 ClientSampleId :
 VHBLK001

Integration Parameters: LSCINT.P
 Integrator: RTE
 Smoothing : OFF
 Sampling : 1
 Start Thrs: 0.2
 Stop Thrs : 0
 Filtering: 5
 Min Area: 0 % of largest Peak
 Max Peaks: 100
 Peak Location: TOP

If leading or trailing edge < 100 prefer < Baseline drop else tangent >
 Peak separation: 5

Method : Z:\voasrv\HPCHEM1\MSVOA_U\Method\SFAMULM042923WMA.M
 Title : VOC Analysis

77	9.410	2498	2510	2540	rBV	356607	596537	69.75%	9.301%
78	9.632	2576	2579	2581	rBV	183	129	0.02%	0.002%
79	10.102	2718	2725	2727	rBV2	471	538	0.06%	0.008%
80	10.230	2762	2765	2768	rBV	250	152	0.02%	0.002%
81	10.295	2782	2785	2789	rBV	245	157	0.02%	0.002%
82	10.317	2789	2792	2793	rBV	184	81	0.01%	0.001%
83	10.488	2838	2845	2850	rBV3	594	798	0.09%	0.012%
84	10.751	2915	2927	2942	rBV	279132	445170	52.05%	6.941%
85	10.979	2996	2998	2999	rBV	271	77	0.01%	0.001%
86	11.066	3022	3025	3027	rBV	292	190	0.02%	0.003%
87	11.195	3061	3065	3068	rBV2	216	175	0.02%	0.003%
88	11.285	3090	3093	3094	rBV2	220	115	0.01%	0.002%
89	11.600	3188	3191	3196	rBV	219	162	0.02%	0.003%
90	11.632	3196	3201	3203	rBV	266	196	0.02%	0.003%
91	11.700	3220	3222	3224	rBV	176	67	0.01%	0.001%
92	11.806	3243	3255	3271	rBV	363448	579829	67.79%	9.040%
93	11.999	3312	3315	3318	rBV	218	169	0.02%	0.003%
94	12.079	3334	3340	3350	rBV2	331	581	0.07%	0.009%
95	12.121	3351	3353	3358	rBV	247	165	0.02%	0.003%
96	12.188	3360	3374	3394	rBV	385195	631894	73.88%	9.852%
97	12.979	3618	3620	3622	rBV	213	120	0.01%	0.002%
98	13.127	3664	3666	3668	rBV	231	112	0.01%	0.002%
99	13.166	3675	3678	3681	rBV2	345	258	0.03%	0.004%
100	14.327	4035	4039	4040	rBV2	1488	995	0.12%	0.016%

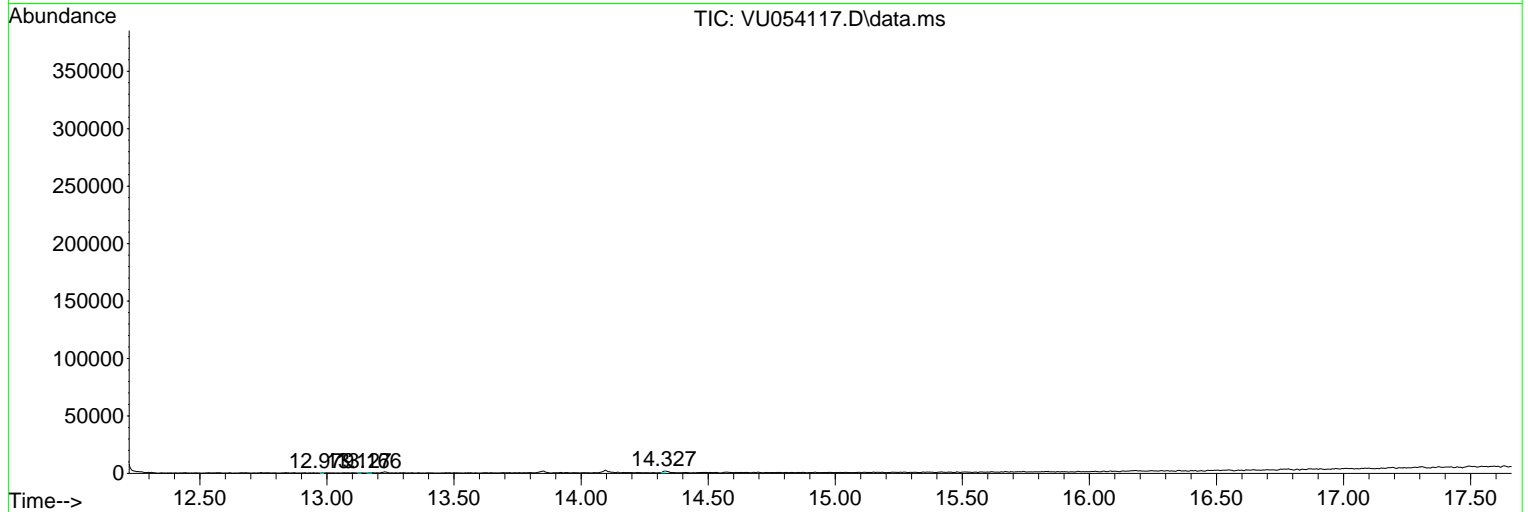
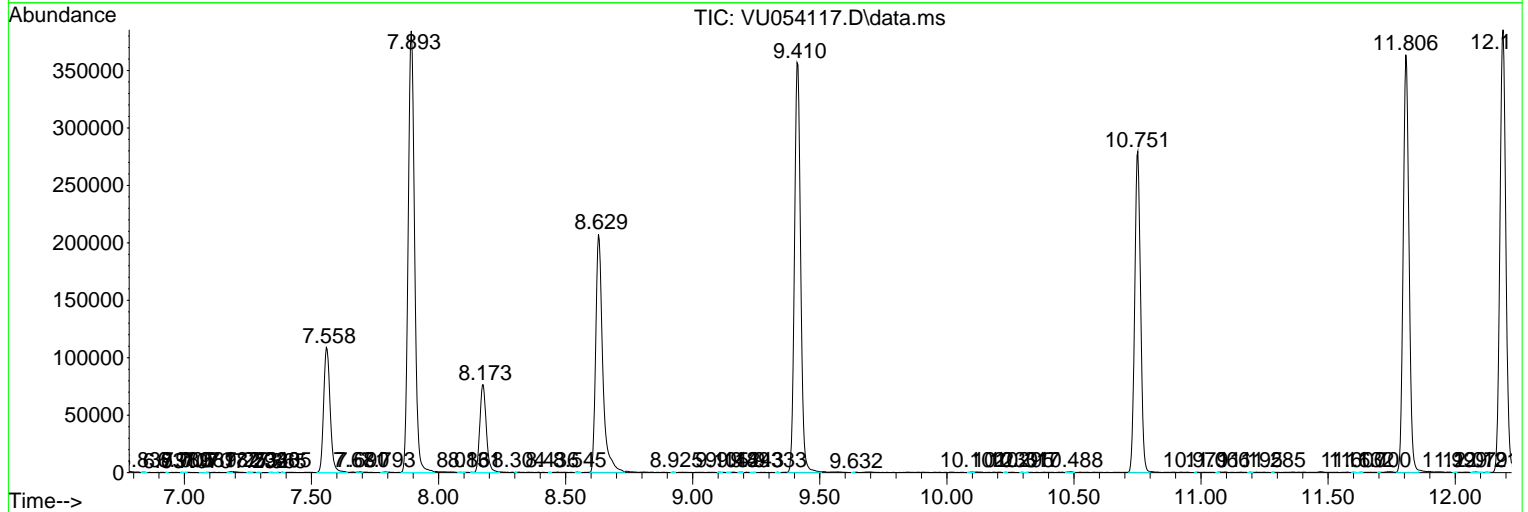
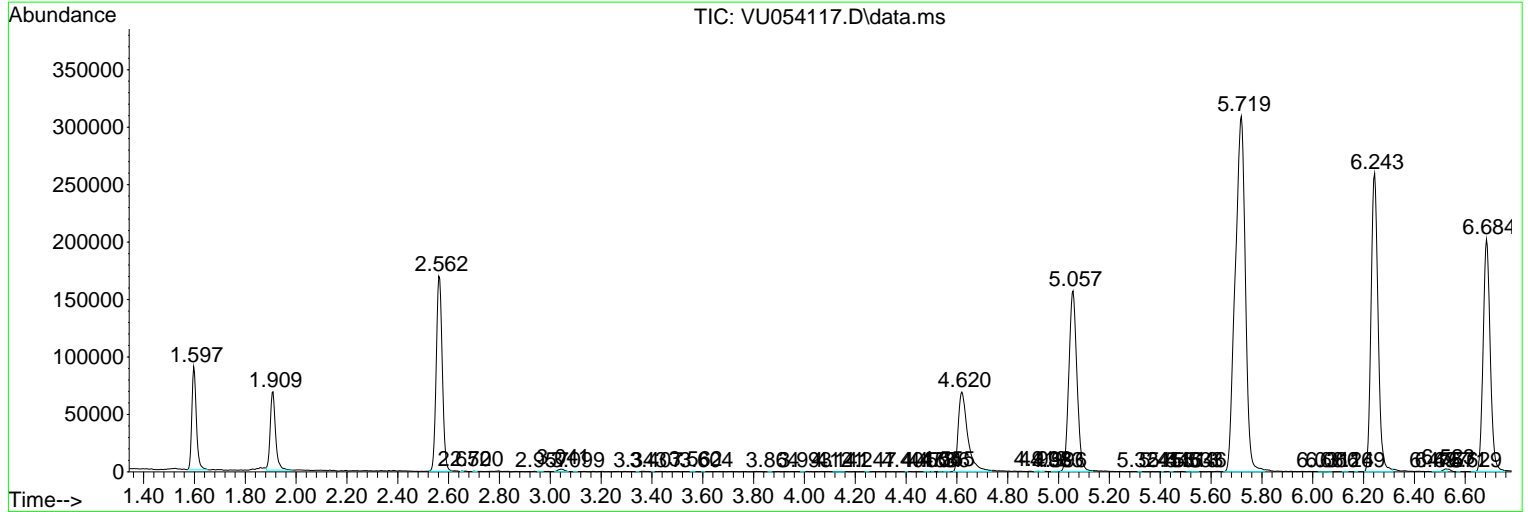
Sum of corrected areas: 6413731

Data Path : Z:\voasrv\HPCHEM1\MSVOA_U\Data\VU050923\
 Data File : VU054117.D
 Acq On : 09 May 2023 11:16
 Operator : JC/MD
 Sample : 02662-13
 Misc : 5.0mL/MSVOA_U/WATER
 ALS Vial : 6 Sample Multiplier: 1

Instrument :
 MSVOA_U
 ClientSampleId :
 VHBLK001

Quant Method : Z:\voasrv\HPCHEM1\MSVOA_U\Method\SFAMULM042923WMA.M
 Quant Title : VOC Analysis

TIC Library : C:\Database\NIST20.L
 TIC Integration Parameters: LSCINT.P



Library Search Compound Report

Data Path : Z:\voasrv\HPCHEM1\MSVOA_U\Data\VU050923\
Data File : VU054117.D
Acq On : 09 May 2023 11:16
Operator : JC/MD
Sample : 02662-13
Misc : 5.0mL/MSVOA_U/WATER
ALS Vial : 6 Sample Multiplier: 1

Instrument :
MSVOA_U
ClientSampleId :
VHBLK001

Quant Method : Z:\voasrv\HPCHEM1\MSVOA_U\Method\SFAMULM042923WMA.M
Quant Title : VOC Analysis

TIC Library : C:\Database\NIST20.L
TIC Integration Parameters: LSCINT.P

No Library Search Compounds Detected

Data Path : Z:\voasrv\HPCHEM1\MSVOA_U\Data\VU050923\
Data File : VU054117.D
Acq On : 09 May 2023 11:16
Operator : JC/MD
Sample : 02662-13
Misc : 5.0mL/MSVOA_U/WATER
ALS Vial : 6 Sample Multiplier: 1

Instrument :
MSVOA_U
ClientSampleId :
VHBLK001

Quant Method : Z:\voasrv\HPCHEM1\MSVOA_U\Method\SFAMULM042923WMA.M
Quant Title : VOC Analysis

TIC Library : C:\Database\NIST0.L
TIC Integration Parameters: LSCINT.P

TIC Top Hit name	RT	EstConc	Units	Response	--Internal Standard--			
					#	RT	Resp	Conc
