

Data File : VU031886.D
 Acq On : 10 May 2019 14:15
 Operator : JC/SP
 Sample : K2690-16ME
 Misc : 6.90g/5mL/100uL/5.0mL/MSVOA_U/MEOH
 ALS Vial : 11 Sample Multiplier: 1

Instrument :
 MSVOA_U
 ClientSampleId :
 A5162MERE

Quant Time: May 11 01:01:50 2019
 Quant Method : Z:\VOASRV\HPCHEM1\MSVOA_U\METHOD\SOMULM042719WMA.M
 Quant Title : VOC Analysis
 QLast Update : Sat May 11 00:57:57 2019
 Response via : Initial Calibration

Internal Standards	R.T.	QIon	Response	Conc	Units	Dev(Min)
1) 1,4-Difluorobenzene	5.88	114	1645596	50.00	ug/L	0.00
28) Chlorobenzene-d5	9.09	117	1718759	50.00	ug/L	0.00
60) 1,4-Dichlorobenzene-d4	11.48	152	811095	50.00	ug/L	0.00

System Monitoring Compounds

4) Vinyl Chloride-d3	1.39	65	261962	19.02	ug/L	0.00
Spiked Amount	50.000	Range	60 - 135	Recovery	=	38.04%#
7) Chloroethane-d5	1.64	69	141767	13.32	ug/L	-0.03
Spiked Amount	50.000	Range	70 - 130	Recovery	=	26.64%#
11) 1,1-Dichloroethene-d2	2.22	63	379806	13.85	ug/L	-0.05
Spiked Amount	50.000	Range	60 - 125	Recovery	=	27.70%#
21) 2-Butanone-d5	4.20	46	435891	34.93	ug/L	0.03
Spiked Amount	100.000	Range	40 - 130	Recovery	=	34.93%#
24) Chloroform-d	4.64	84	471894	18.71	ug/L	0.00
Spiked Amount	50.000	Range	70 - 125	Recovery	=	37.42%#
26) 1,2-Dichloroethane-d4	5.30	65	328190	19.92	ug/L	0.00
Spiked Amount	50.000	Range	70 - 125	Recovery	=	39.84%#
32) Benzene-d6	5.33	84	1009386	19.12	ug/L	0.00
Spiked Amount	50.000	Range	70 - 125	Recovery	=	38.24%#
36) 1,2-Dichloropropane-d6	6.32	67	335882	18.09	ug/L	0.00
Spiked Amount	50.000	Range	70 - 120	Recovery	=	36.18%#
41) Toluene-d8	7.56	98	956427	20.81	ug/L	0.00
Spiked Amount	50.000	Range	80 - 120	Recovery	=	41.62%#
43) trans-1,3-Dichloropropene-	7.85	79	143957	18.06	ug/L	0.00
Spiked Amount	50.000	Range	60 - 125	Recovery	=	36.12%#
47) 2-Hexanone-d5	8.32	63	329008	40.94	ug/L	0.02
Spiked Amount	100.000	Range	45 - 130	Recovery	=	40.94%#
57) 1,1,2,2-Tetrachloroethane-	10.43	84	516879	20.74	ug/L	0.00
Spiked Amount	50.000	Range	65 - 120	Recovery	=	41.48%#
64) 1,2-Dichlorobenzene-d4	11.86	152	355661	20.85	ug/L	0.00
Spiked Amount	50.000	Range	80 - 120	Recovery	=	41.70%#

Target Compounds

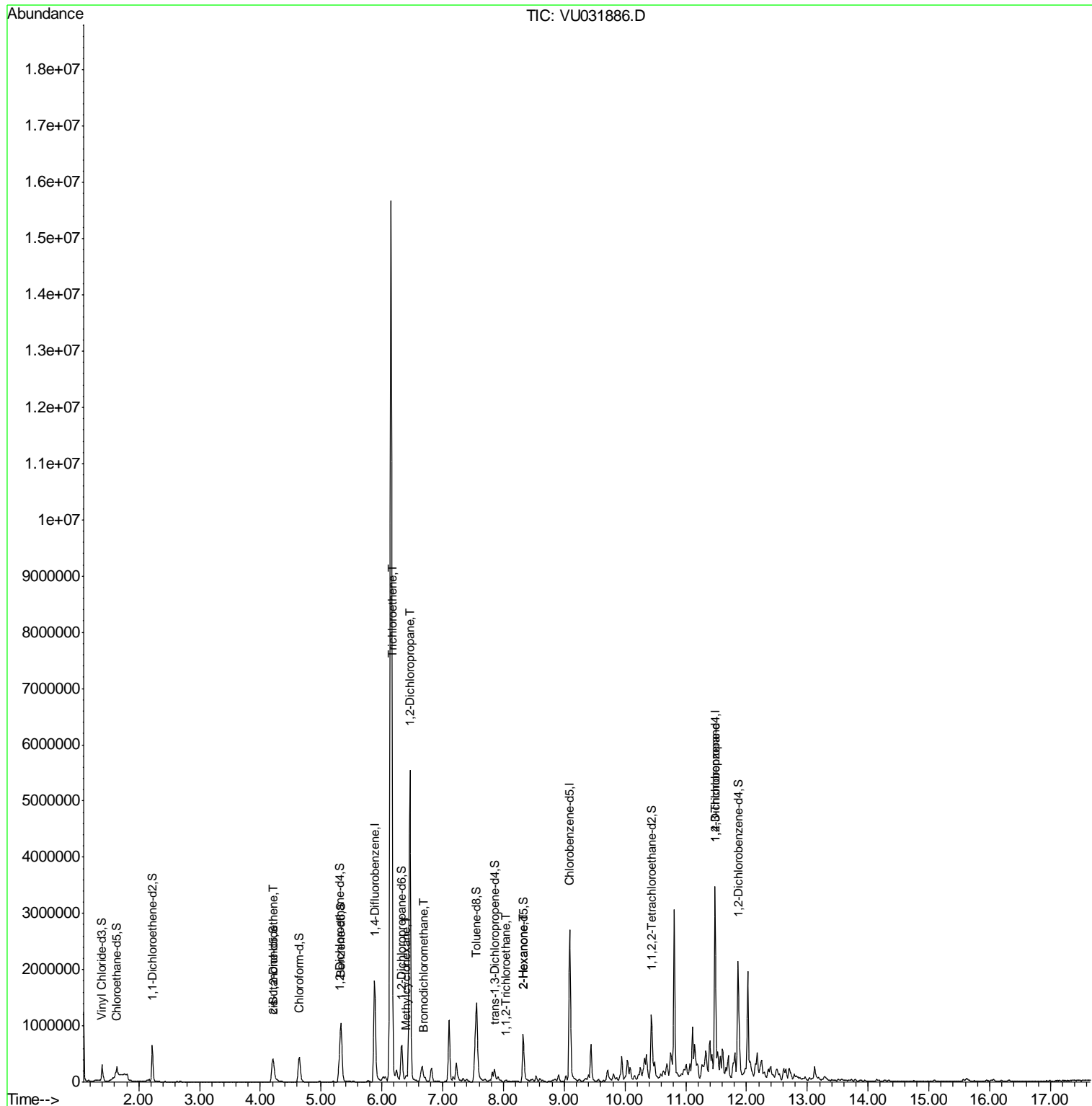
Target Compounds	R.T.	QIon	Response	Conc	Units	Qvalue
20) cis-1,2-Dichloroethene	4.21	96	138034	9.619	ug/L	93
34) Trichloroethene	6.18	95	38616	2.521	ug/L #	1
35) Methylcyclohexane	6.40	83	43318	1.887	ug/L #	81
37) 1,2-Dichloropropane	6.46	63	30217	1.684	ug/L #	1
38) Bromodichloromethane	6.70	83	32214	1.481	ug/L #	31
45) 1,1,2-Trichloroethane	8.04	97	11779	0.796	ug/L #	19
48) 2-Hexanone	8.32	43	53087	2.378	ug/L #	55
59) 1,2,3-Trichloropropane	11.48	75	108781	5.114	ug/L	90

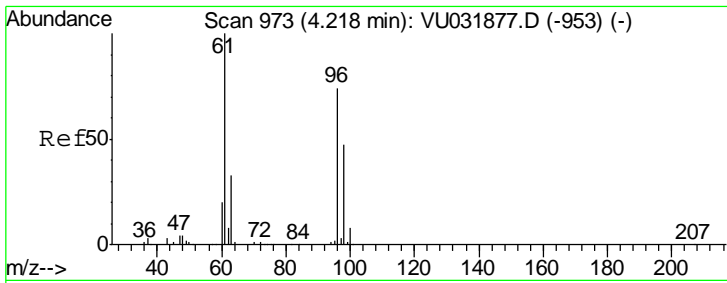
(#) = qualifier out of range (m) = manual integration (+) = signals summed

Data File : VU031886.D
Acq On : 10 May 2019 14:15
Operator : JC/SP
Sample : K2690-16ME
Misc : 6.90g/5mL/100uL/5.0mL/MSVOA_U/MEOH
ALS Vial : 11 Sample Multiplier: 1

Instrument :
MSVOA_U
ClientSampleId :
A5162MERE

Quant Time: May 11 01:01:50 2019
Quant Method : Z:\VOASRV\HPCHEM1\MSVOA_U\METHOD\SOMULM042719WMA.M
Quant Title : VOC Analysis
QLast Update : Sat May 11 00:57:57 2019
Response via : Initial Calibration

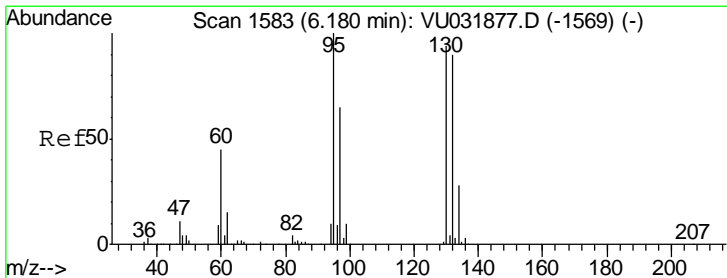
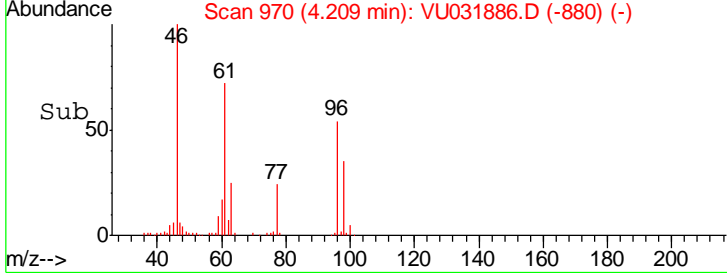
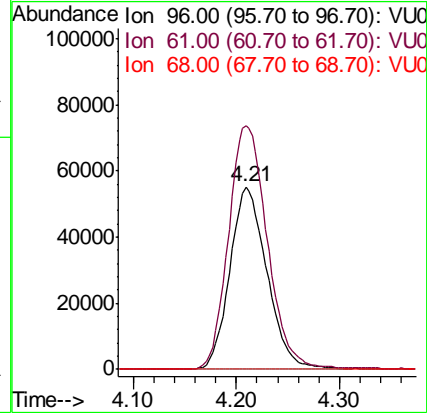
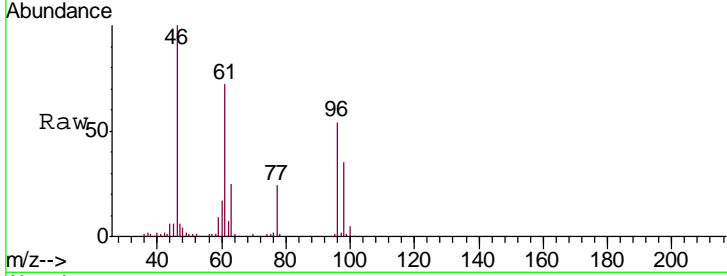




#20
 cis-1,2-Dichloroethene
 Concen: 9.619 ug/L
 RT: 4.21 min Scan# 970
 Delta R.T. -0.01 min
 Lab File: VU031886.D
 Acq: 10 May 2019 14:15

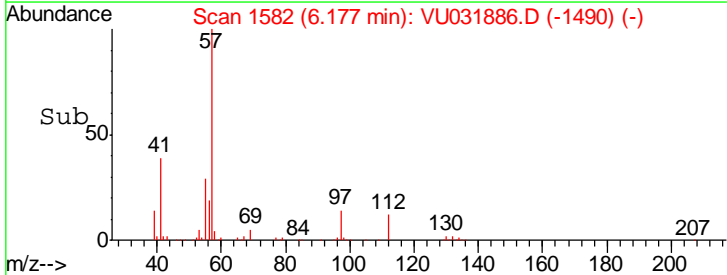
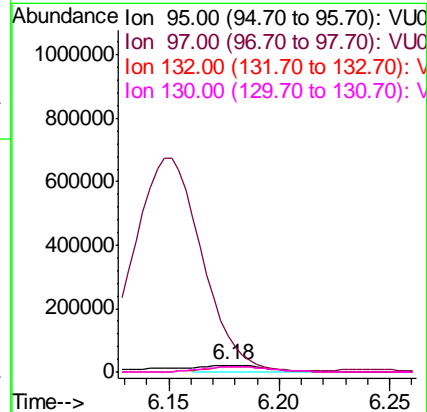
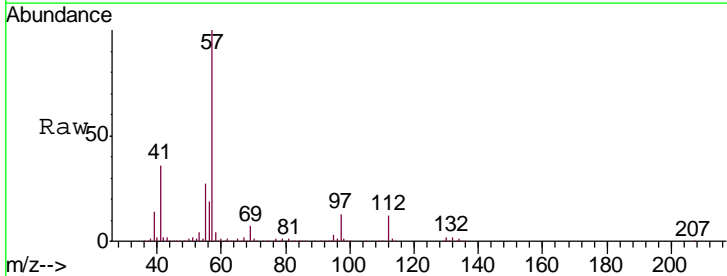
Instrument :
 MSVOA_U
ClientSampled :
 A5162MERE

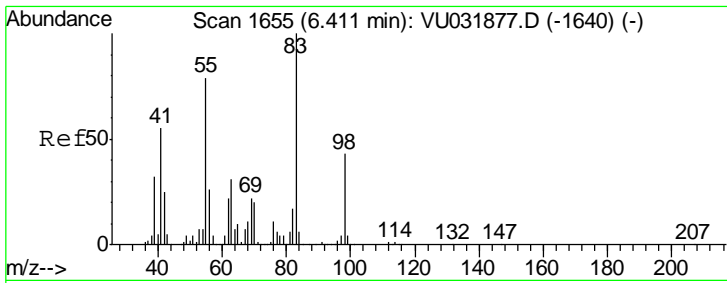
Tgt Ion	Resp	Lower	Upper
96	138034		
61	133.4	99.5	184.7
68	0.0	0.0	0.0



#34
 Trichloroethene
 Concen: 2.521 ug/L
 RT: 6.18 min Scan# 1582
 Delta R.T. -0.00 min
 Lab File: VU031886.D
 Acq: 10 May 2019 14:15

Tgt Ion	Resp	Lower	Upper
95	38616		
97	510.8	44.8	83.2#
132	80.1	63.1	117.1
130	74.7	66.5	123.5

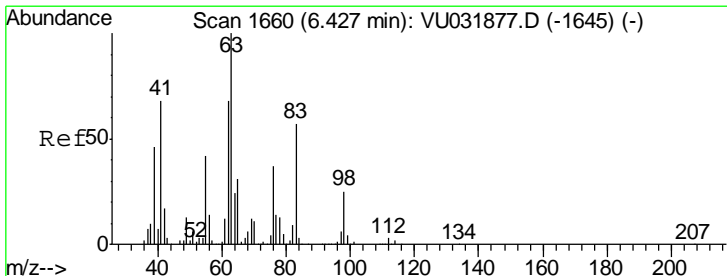
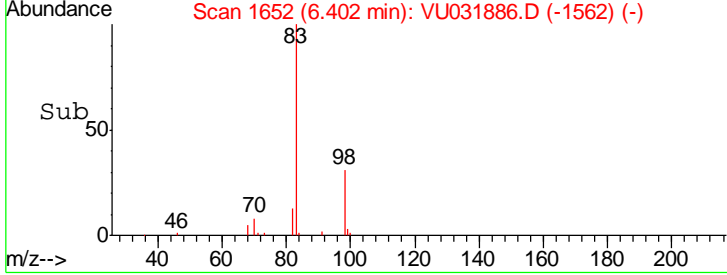
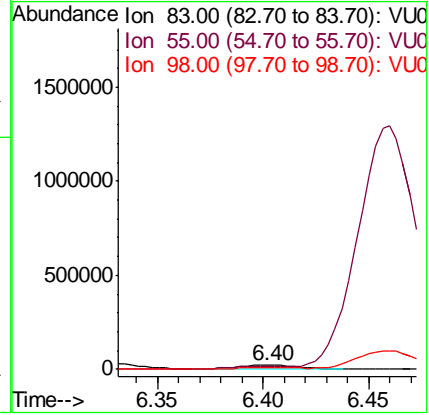
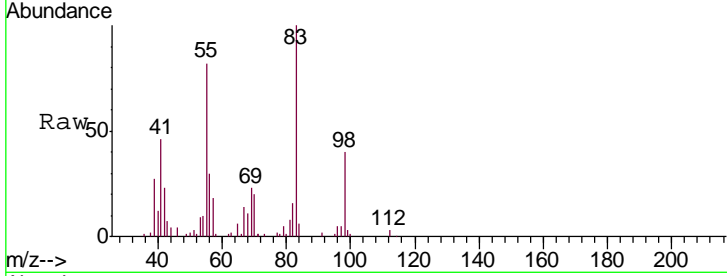




#35
 Methylcyclohexane
 Concen: 1.887 ug/L
 RT: 6.40 min Scan# 1652
 Delta R.T. -0.01 min
 Lab File: VU031886.D
 Acq: 10 May 2019 14:15

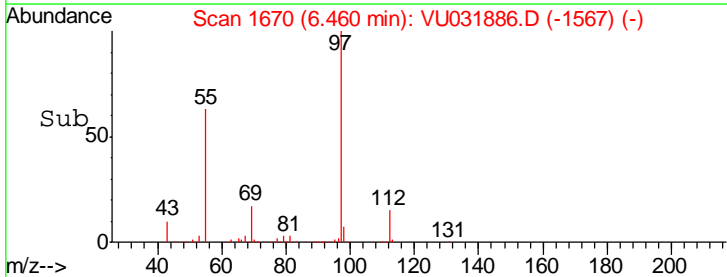
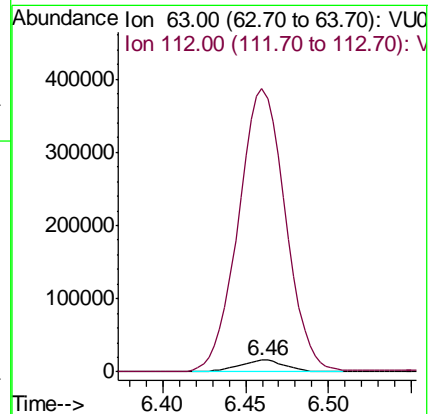
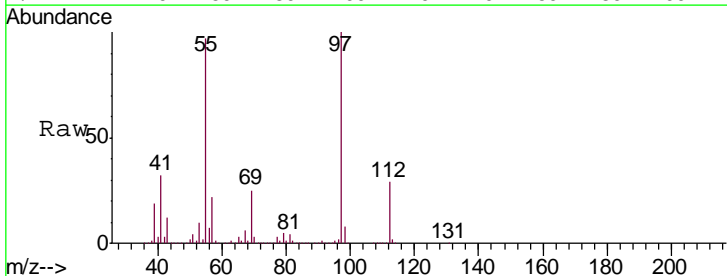
Instrument : MSVOA_U
 ClientSampled : A5162MERE

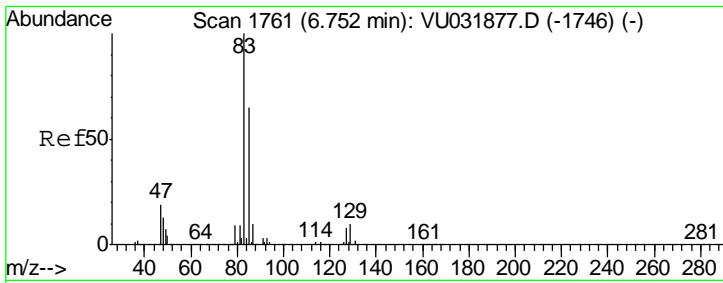
Tgt Ion	Resp	Lower	Upper
83	43318		
55	66.8	73.0	109.4#
98	40.0	35.3	52.9



#37
 1,2-Dichloropropane
 Concen: 1.684 ug/L
 RT: 6.46 min Scan# 1670
 Delta R.T. 0.03 min
 Lab File: VU031886.D
 Acq: 10 May 2019 14:15

Tgt Ion	Resp	Lower	Upper
63	30217		
112	2522.5	2.7	4.1#

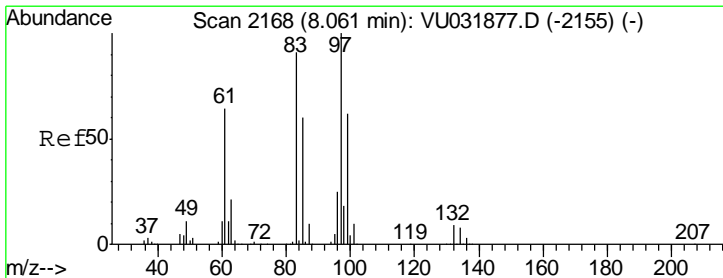
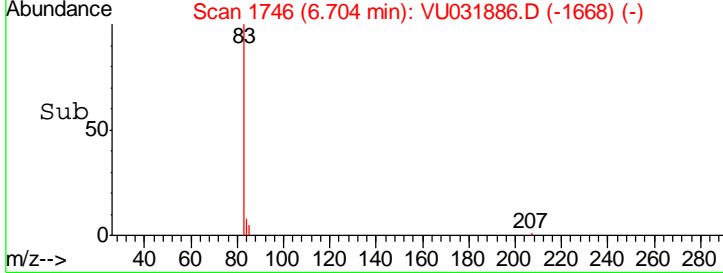
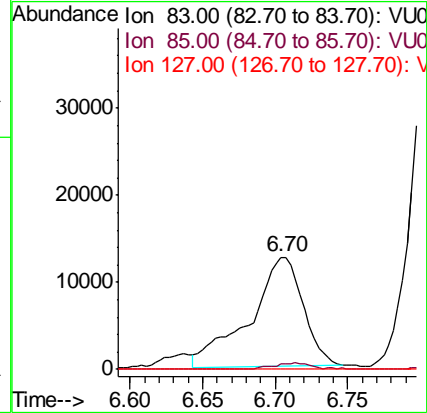
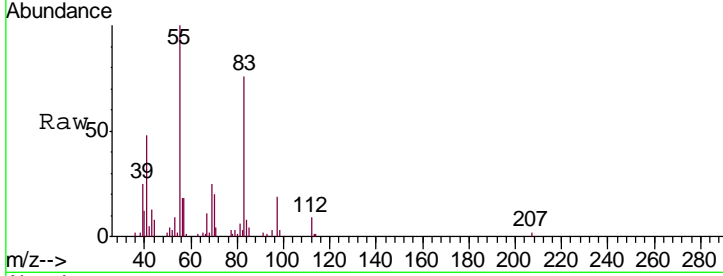




#38
 Bromodichloromethane
 Concen: 1.481 ug/L
 RT: 6.70 min Scan# 1746
 Delta R.T. -0.05 min
 Lab File: VU031886.D
 Acq: 10 May 2019 14:15

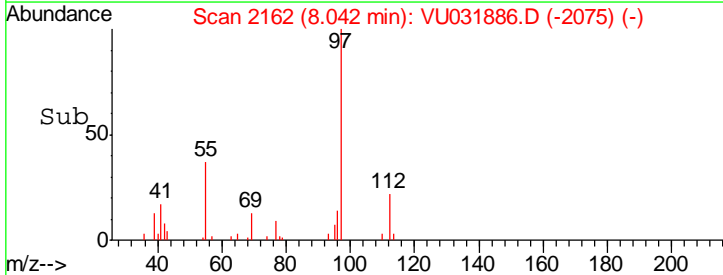
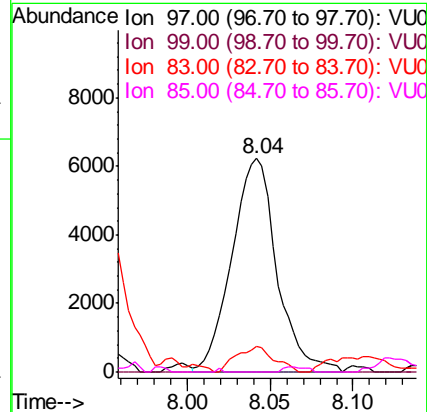
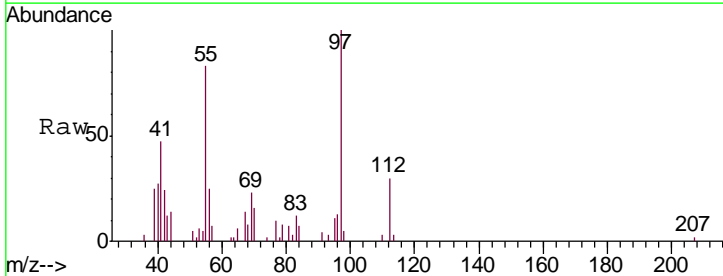
Instrument :
 MSVOA_U
 ClientSampleId :
 A5162MERE

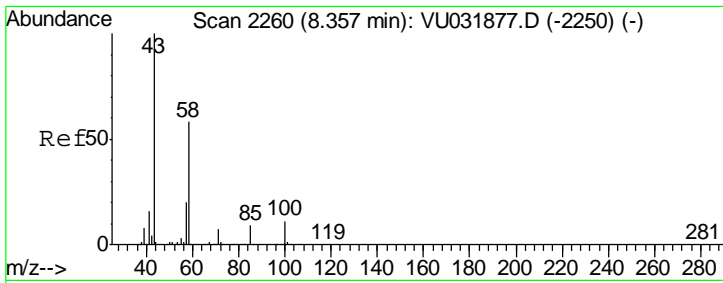
Tgt Ion	Resp	Lower	Upper
83	100		
85	4.7	43.7	81.1#
127	0.0	6.7	10.1#



#45
 1,1,2-Trichloroethane
 Concen: 0.796 ug/L
 RT: 8.04 min Scan# 2162
 Delta R.T. -0.02 min
 Lab File: VU031886.D
 Acq: 10 May 2019 14:15

Tgt Ion	Resp	Lower	Upper
97	100		
99	0.0	43.0	80.0#
83	12.3	63.6	118.2#
85	0.0	40.5	75.3#

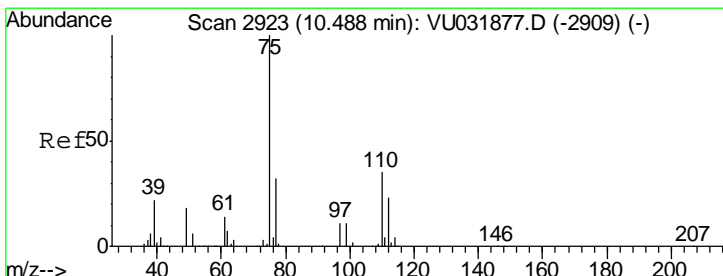
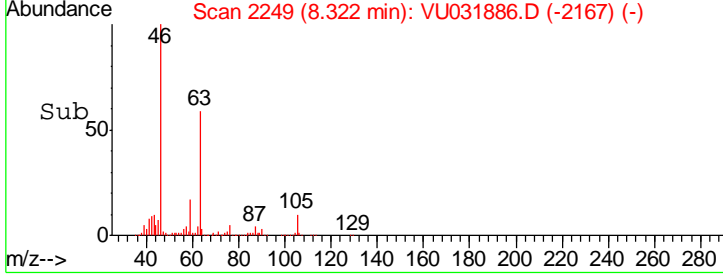
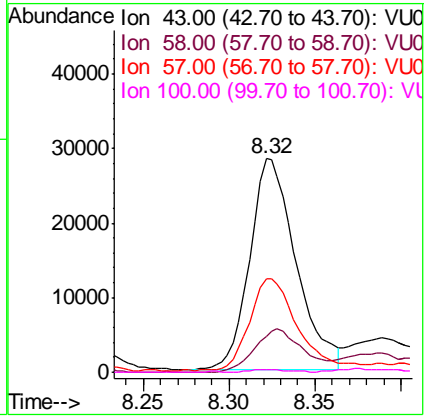
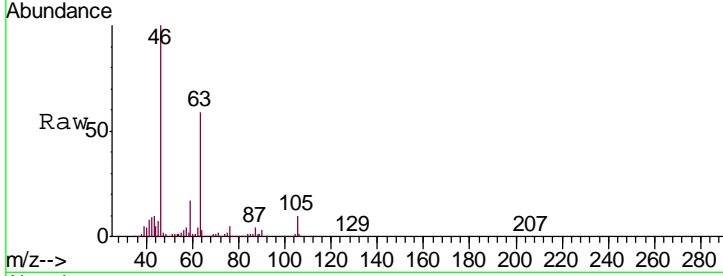




#48
 2-Hexanone
 Concen: 2.378 ug/L
 RT: 8.32 min Scan# 2249
 Delta R.T. -0.04 min
 Lab File: VU031886.D
 Acq: 10 May 2019 14:15

Instrument :
 MSVOA_U
ClientSampled :
 A5162MERE

Tgt Ion	Resp	Lower	Upper
43	53087		
58	21.5	42.1	63.1#
57	44.2	14.6	22.0#
100	0.5	7.2	10.8#



#59
 1,2,3-Trichloropropane
 Concen: 5.114 ug/L
 RT: 11.48 min Scan# 3232
 Delta R.T. 0.99 min
 Lab File: VU031886.D
 Acq: 10 May 2019 14:15

Tgt Ion	Resp	Lower	Upper
75	108781		
77	38.0	25.9	38.9

