

Data Path : Z:\voasrv\HPCHEM1\MSVOA_U\Data\VU051022\
 Data File : VU048483.D
 Acq On : 10 May 2022 12:07
 Operator : SY/MD
 Sample : N2736-02
 Misc : 5.0mL/MSVOA_U/WATER
 ALS Vial : 7 Sample Multiplier: 1

Instrument :
 MSVOA_U
 ClientSampleId :
 EXET9

Integration Parameters: LSCINT.P

Integrator: RTE
 Smoothing : OFF
 Sampling : 1
 Start Thrs : 0.2
 Stop Thrs : 0

Filtering: 5
 Min Area: 0 % of largest Peak
 Max Peaks: 100
 Peak Location: TOP

If leading or trailing edge < 100 prefer < Baseline drop else tangent >
 Peak separation: 5

Method : Z:\voasrv\HPCHEM1\MSVOA_U\Method\SFAMULM050622WMA.M
 Title : VOC Analysis

Signal : TIC: VU048483.D\data.ms

peak #	R.T. min	first scan	max scan	last scan	PK TY	peak height	corr. area	corr. % max.	% of total
1	1.601	75	81	91	rVB	133656	146285	12.57%	1.598%
2	1.913	171	178	195	rVB	104277	135614	11.65%	1.481%
3	2.488	355	357	360	rBV2	293	197	0.02%	0.002%
4	2.569	370	382	396	rVV	247404	399787	34.35%	4.367%
5	2.720	426	429	433	rBV	343	211	0.02%	0.002%
6	2.922	488	492	493	rBV	210	141	0.01%	0.002%
7	2.951	496	501	505	rBV3	475	506	0.04%	0.006%
8	3.044	520	530	540	rVV4	2493	4801	0.41%	0.052%
9	3.134	555	558	559	rBV4	253	135	0.01%	0.001%
10	3.167	565	568	569	rBV	278	168	0.01%	0.002%
11	3.260	595	597	601	rBV2	194	141	0.01%	0.002%
12	3.298	608	609	612	rBV	238	135	0.01%	0.001%
13	3.315	612	614	617	rVV	289	170	0.01%	0.002%
14	3.340	617	622	627	rVV2	235	304	0.03%	0.003%
15	3.363	627	629	632	rVB	339	151	0.01%	0.002%
16	3.421	645	647	650	rVB2	228	134	0.01%	0.001%
17	3.597	697	702	707	rBV	451	462	0.04%	0.005%
18	3.768	751	755	762	rVB2	335	372	0.03%	0.004%
19	3.797	762	764	767	rBV	216	129	0.01%	0.001%
20	3.842	775	778	781	rBV	242	148	0.01%	0.002%
21	3.877	786	789	793	rBV	179	152	0.01%	0.002%
22	3.964	813	816	821	rVB	256	201	0.02%	0.002%
23	4.202	887	890	893	rBV2	224	140	0.01%	0.002%
24	4.286	914	916	920	rBV2	287	265	0.02%	0.003%
25	4.372	939	943	946	rVB2	279	188	0.02%	0.002%
26	4.527	988	991	995	rBV2	267	178	0.02%	0.002%
27	4.549	996	998	1001	rVB2	285	183	0.02%	0.002%
28	4.617	1007	1019	1046	rBV	123146	301174	25.87%	3.290%
29	4.877	1098	1100	1106	rBV2	435	323	0.03%	0.004%
30	4.999	1134	1138	1139	rBV	520	385	0.03%	0.004%
31	5.064	1143	1158	1181	rVV2	214160	475179	40.82%	5.190%
32	5.192	1195	1198	1202	rVB	483	360	0.03%	0.004%
33	5.215	1202	1205	1207	rBV3	281	150	0.01%	0.002%
34	5.295	1226	1230	1236	rBV3	707	760	0.07%	0.008%
35	5.327	1238	1240	1243	rVB	329	156	0.01%	0.002%
36	5.347	1243	1246	1252	rVB2	285	316	0.03%	0.003%

Data Path : Z:\voasrv\HPCHEM1\MSVOA_U\Data\VU051022\
 Data File : VU048483.D
 Acq On : 10 May 2022 12:07
 Operator : SY/MD
 Sample : N2736-02
 Misc : 5.0mL/MSVOA_U/WATER
 ALS Vial : 7 Sample Multiplier: 1

Instrument :
 MSVOA_U
 ClientSampleId :
 EXET9

Integration Parameters: LSCINT.P

Integrator: RTE
 Smoothing : OFF
 Sampling : 1
 Start Thrs: 0.2
 Stop Thrs : 0

Filtering: 5
 Min Area: 0 % of largest Peak
 Max Peaks: 100
 Peak Location: TOP

If leading or trailing edge < 100 prefer < Baseline drop else tangent >
 Peak separation: 5

Method : Z:\voasrv\HPCHEM1\MSVOA_U\Method\SFAMULM050622WMA.M
 Title : VOC Analysis

37	5.379	1252	1256	1258	rBV2	322	272	0.02%	0.003%
38	5.414	1265	1267	1269	rBV2	354	238	0.02%	0.003%
39	5.462	1269	1282	1299	rVB4	14092	31435	2.70%	0.343%
40	5.639	1325	1337	1343	rBV7	2222	4633	0.40%	0.051%
41	5.726	1344	1364	1388	rVV2	426119	1163980	100.00%	12.714%
42	6.099	1478	1480	1483	rBV2	222	173	0.01%	0.002%
43	6.150	1492	1496	1501	rBV2	583	628	0.05%	0.007%
44	6.250	1513	1527	1549	rBV	366003	693784	59.60%	7.578%
45	6.530	1607	1614	1622	rVV6	2023	3249	0.28%	0.035%
46	6.565	1622	1625	1628	rVB2	621	346	0.03%	0.004%
47	6.691	1650	1664	1692	rBV	266517	533949	45.87%	5.832%
48	6.861	1716	1717	1718	rBV	516	166	0.01%	0.002%
49	6.922	1732	1736	1746	rVB3	986	1316	0.11%	0.014%
50	6.990	1753	1757	1761	rVB3	483	477	0.04%	0.005%
51	7.019	1762	1766	1767	rBV	243	162	0.01%	0.002%
52	7.073	1771	1783	1793	rVB9	3866	7789	0.67%	0.085%
53	7.131	1799	1801	1804	rBV2	230	144	0.01%	0.002%
54	7.253	1830	1839	1853	rVB4	10392	20760	1.78%	0.227%
55	7.379	1866	1878	1891	rVB3	11919	23352	2.01%	0.255%
56	7.469	1899	1906	1908	rBV4	1127	1009	0.09%	0.011%
57	7.565	1922	1936	1957	rBV	110395	200796	17.25%	2.193%
58	7.761	1993	1997	2000	rBV	886	891	0.08%	0.010%
59	7.900	2027	2040	2055	rBV	529054	911304	78.29%	9.954%
60	8.128	2106	2111	2112	rBV2	292	218	0.02%	0.002%
61	8.179	2116	2127	2139	rBV	80014	134707	11.57%	1.471%
62	8.475	2211	2219	2224	rVB6	1708	2426	0.21%	0.026%
63	8.530	2234	2236	2239	rBV2	323	203	0.02%	0.002%
64	8.575	2240	2250	2255	rBV6	1052	1635	0.14%	0.018%
65	8.633	2255	2268	2301	rBV	377543	682441	58.63%	7.454%
66	8.887	2344	2347	2348	rBV	300	175	0.02%	0.002%
67	8.944	2362	2365	2367	rBV	633	439	0.04%	0.005%
68	9.057	2396	2400	2402	rBV2	294	175	0.02%	0.002%
69	9.076	2402	2406	2408	rVV4	551	418	0.04%	0.005%
70	9.163	2428	2433	2437	rBV4	695	788	0.07%	0.009%
71	9.269	2463	2466	2468	rBV3	233	134	0.01%	0.001%
72	9.369	2494	2497	2499	rBV	327	138	0.01%	0.002%
73	9.417	2499	2512	2531	rBV	518628	859658	73.86%	9.390%
74	9.665	2586	2589	2591	rBV	251	135	0.01%	0.001%
75	9.694	2591	2598	2599	rBV4	2168	2054	0.18%	0.022%
76	9.887	2654	2658	2659	rBV2	802	614	0.05%	0.007%

Data Path : Z:\voasrv\HPCHEM1\MSVOA_U\Data\VU051022\
 Data File : VU048483.D
 Acq On : 10 May 2022 12:07
 Operator : SY/MD
 Sample : N2736-02
 Misc : 5.0mL/MSVOA_U/WATER
 ALS Vial : 7 Sample Multiplier: 1

Instrument :
 MSVOA_U
 ClientSampleId :
 EXET9

Integration Parameters: LSCINT.P

Integrator: RTE
 Smoothing : OFF
 Sampling : 1
 Start Thrs: 0.2
 Stop Thrs : 0

Filtering: 5
 Min Area: 0 % of largest Peak
 Max Peaks: 100
 Peak Location: TOP

If leading or trailing edge < 100 prefer < Baseline drop else tangent >
 Peak separation: 5

Method : Z:\voasrv\HPCHEM1\MSVOA_U\Method\SFAMULM050622WMA.M
 Title : VOC Analysis

77	10.041	2698	2706	2713	rBV5	846	1424	0.12%	0.016%
78	10.147	2738	2739	2744	rVB2	560	284	0.02%	0.003%
79	10.176	2744	2748	2750	rBV	445	350	0.03%	0.004%
80	10.340	2793	2799	2801	rBV	357	406	0.03%	0.004%
81	10.379	2808	2811	2813	rBV2	430	191	0.02%	0.002%
82	10.488	2837	2845	2853	rBV3	855	1344	0.12%	0.015%
83	10.652	2894	2896	2897	rBV	420	167	0.01%	0.002%
84	10.755	2916	2928	2947	rBV	384687	621732	53.41%	6.791%
85	10.896	2963	2972	2981	rVB4	2087	2958	0.25%	0.032%
86	11.060	3020	3023	3026	rBV	240	135	0.01%	0.001%
87	11.462	3145	3148	3158	rVB4	1208	1953	0.17%	0.021%
88	11.607	3190	3193	3197	rBV	340	284	0.02%	0.003%
89	11.703	3221	3223	3225	rBV	293	156	0.01%	0.002%
90	11.813	3244	3257	3283	rBV	548574	869877	74.73%	9.501%
91	12.099	3341	3346	3357	rVB3	9168	12352	1.06%	0.135%
92	12.192	3362	3375	3395	rBV	533757	864380	74.26%	9.441%
93	12.575	3486	3494	3504	rVB3	6524	9280	0.80%	0.101%
94	12.819	3566	3570	3572	rBV	392	336	0.03%	0.004%
95	12.893	3591	3593	3595	rBV2	592	348	0.03%	0.004%
96	13.099	3654	3657	3658	rBV	364	194	0.02%	0.002%
97	13.391	3744	3748	3750	rBV2	645	564	0.05%	0.006%
98	13.475	3771	3774	3778	rBV3	518	405	0.03%	0.004%
99	14.089	3960	3965	3979	rVB2	3240	5503	0.47%	0.060%
100	14.282	4021	4025	4033	rVB5	2619	3405	0.29%	0.037%

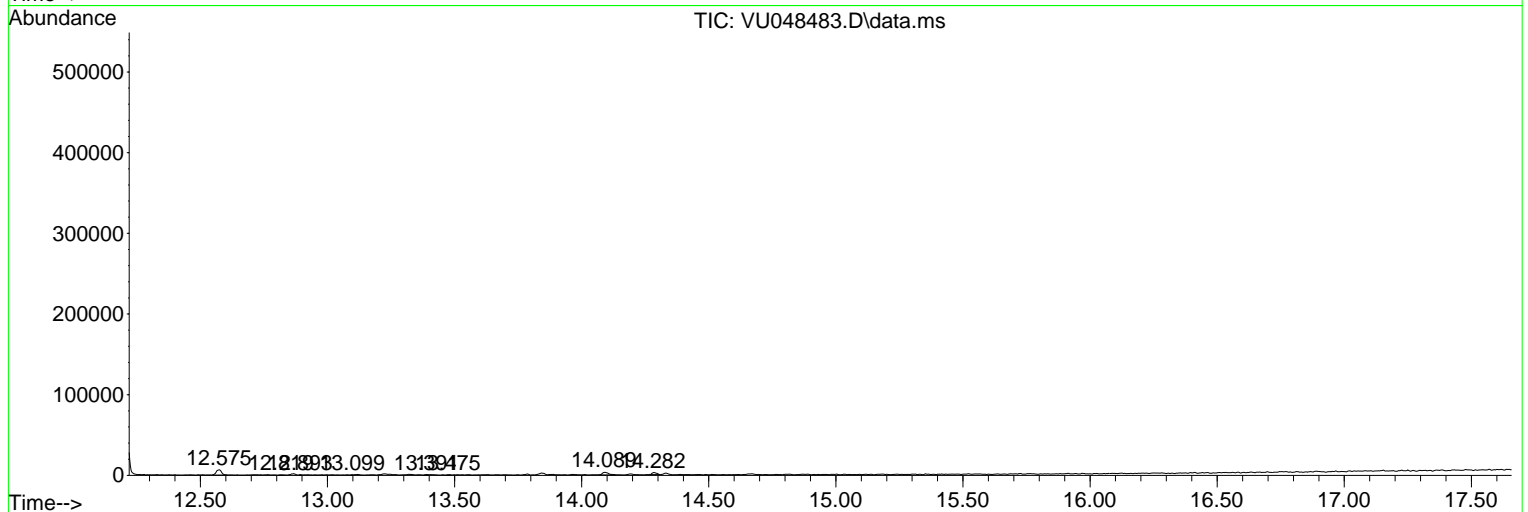
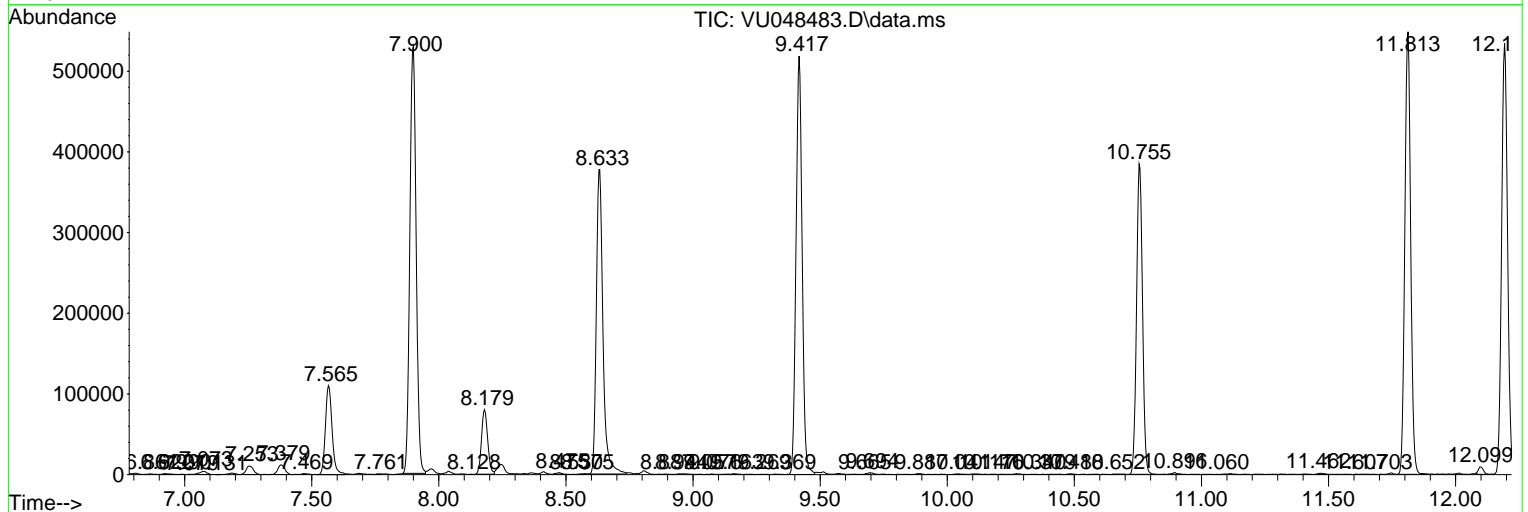
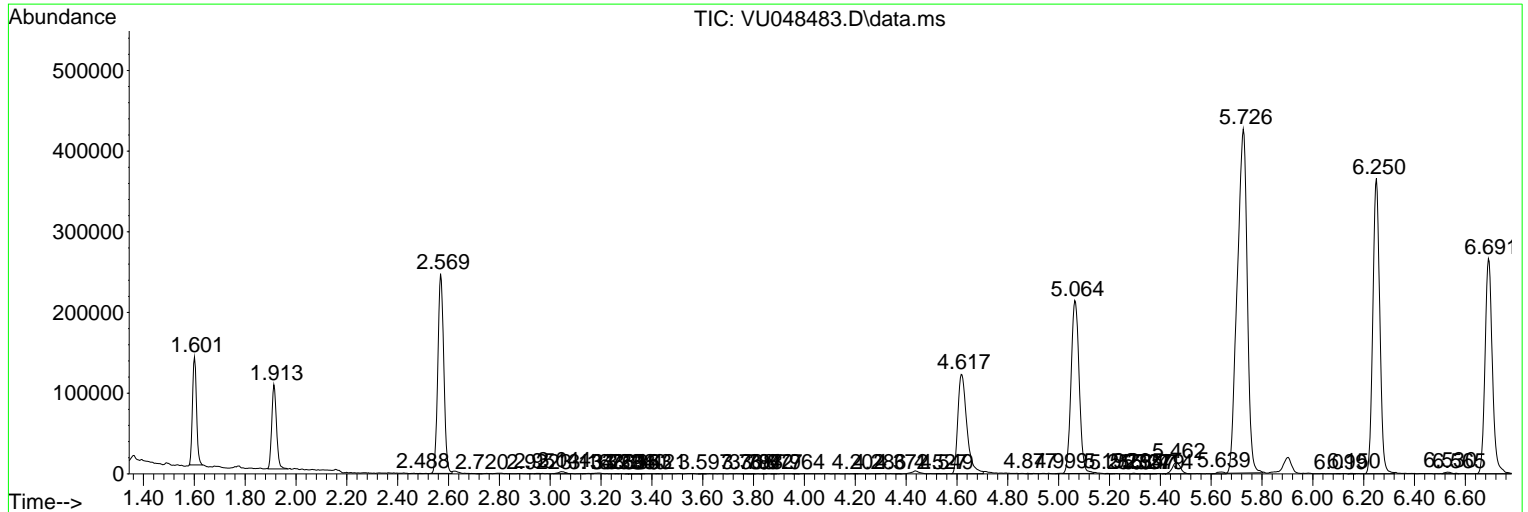
Sum of corrected areas: 9155340

Data Path : Z:\voasrv\HPCHEM1\MSVOA_U\Data\VU051022\
 Data File : VU048483.D
 Acq On : 10 May 2022 12:07
 Operator : SY/MD
 Sample : N2736-02
 Misc : 5.0mL/MSVOA_U/WATER
 ALS Vial : 7 Sample Multiplier: 1

Instrument :
 MSVOA_U
ClientSampleId :
 EXET9

Quant Method : Z:\voasrv\HPCHEM1\MSVOA_U\Method\SFAMULM050622WMA.M
 Quant Title : VOC Analysis

TIC Library : C:\Database\NIST20.L
 TIC Integration Parameters: LSCINT.P



Library Search Compound Report

Data Path : Z:\voasrv\HPCHEM1\MSVOA_U\Data\VU051022\
Data File : VU048483.D
Acq On : 10 May 2022 12:07
Operator : SY/MD
Sample : N2736-02
Misc : 5.0mL/MSVOA_U/WATER
ALS Vial : 7 Sample Multiplier: 1

Instrument :
MSVOA_U
ClientSampleId :
EXET9

Quant Method : Z:\voasrv\HPCHEM1\MSVOA_U\Method\SFAMULM050622WMA.M
Quant Title : VOC Analysis

TIC Library : C:\Database\NIST20.L
TIC Integration Parameters: LSCINT.P

No Library Search Compounds Detected

Data Path : Z:\voasrv\HPCHEM1\MSVOA_U\Data\VU051022\
Data File : VU048483.D
Acq On : 10 May 2022 12:07
Operator : SY/MD
Sample : N2736-02
Misc : 5.0mL/MSVOA_U/WATER
ALS Vial : 7 Sample Multiplier: 1

Instrument :
MSVOA_U
ClientSampleId :
EXET9

Quant Method : Z:\voasrv\HPCHEM1\MSVOA_U\Method\SFAMULM050622WMA.M
Quant Title : VOC Analysis

TIC Library : C:\Database\NIST0.L
TIC Integration Parameters: LSCINT.P

TIC Top Hit name	RT	EstConc	Units	Response	--Internal Standard--		
					#	RT	Resp Conc
