

Data Path : Z:\voasrv\HPCHEM1\MSVOA_U\Data\VU051122\
 Data File : VU048523.D
 Acq On : 11 May 2022 17:38
 Operator : SY/MD
 Sample : N2790-09
 Misc : 5.0mL/MSVOA_U/WATER
 ALS Vial : 19 Sample Multiplier: 1

Instrument :
 MSVOA_U
 ClientSampleId :
 BGPN8

Integration Parameters: LSCINT.P

Integrator: RTE
 Smoothing : OFF
 Sampling : 1
 Start Thrs : 0.2
 Stop Thrs : 0

Filtering: 5
 Min Area: 0 % of largest Peak
 Max Peaks: 100
 Peak Location: TOP

If leading or trailing edge < 100 prefer < Baseline drop else tangent >
 Peak separation: 5

Method : Z:\voasrv\HPCHEM1\MSVOA_U\Method\SFAMULM050622WMA.M
 Title : VOC Analysis

Signal : TIC: VU048523.D\data.ms

peak #	R.T. min	first scan	max scan	last scan	PK TY	peak height	corr. area	corr. % max.	% of total
1	1.601	74	81	100	rVB	121188	136788	12.60%	1.583%
2	1.912	171	178	192	rVB	86697	112573	10.37%	1.303%
3	2.340	308	311	316	rVB2	541	349	0.03%	0.004%
4	2.568	369	382	394	rBV	221822	360785	33.24%	4.174%
5	2.691	418	420	423	rBV	323	227	0.02%	0.003%
6	2.752	429	439	460	rBV2	8077	16548	1.52%	0.191%
7	2.899	482	485	490	rBV2	434	459	0.04%	0.005%
8	2.954	498	502	504	rBV3	222	166	0.02%	0.002%
9	3.018	518	522	524	rVV	228	158	0.01%	0.002%
10	3.054	524	533	536	rVV2	857	1078	0.10%	0.012%
11	3.076	538	540	543	rVB2	340	185	0.02%	0.002%
12	3.115	549	552	554	rBV	333	192	0.02%	0.002%
13	3.240	589	591	594	rBV	272	184	0.02%	0.002%
14	3.340	619	622	625	rBB2	237	157	0.01%	0.002%
15	3.362	625	629	633	rBV	539	629	0.06%	0.007%
16	3.546	683	686	691	rBV2	321	355	0.03%	0.004%
17	3.768	750	755	757	rBV	182	203	0.02%	0.002%
18	3.993	823	825	828	rBB	282	168	0.02%	0.002%
19	4.022	829	834	836	rBV	305	243	0.02%	0.003%
20	4.060	845	846	852	rVB	242	182	0.02%	0.002%
21	4.099	855	858	862	rBB	211	174	0.02%	0.002%
22	4.163	875	878	880	rBV	235	181	0.02%	0.002%
23	4.250	900	905	907	rBB	210	162	0.01%	0.002%
24	4.266	907	910	913	rVB	330	241	0.02%	0.003%
25	4.285	913	916	919	rBV	287	208	0.02%	0.002%
26	4.420	955	958	960	rBV	321	226	0.02%	0.003%
27	4.452	965	968	970	rBV	559	328	0.03%	0.004%
28	4.546	993	997	1001	rBV	355	374	0.03%	0.004%
29	4.620	1006	1020	1045	rBV	112735	265556	24.47%	3.073%
30	5.063	1142	1158	1182	rVV	208077	487346	44.90%	5.639%
31	5.266	1216	1221	1225	rBV4	454	503	0.05%	0.006%
32	5.337	1240	1243	1246	rBV2	339	207	0.02%	0.002%
33	5.407	1261	1265	1268	rBV	278	275	0.03%	0.003%
34	5.462	1278	1282	1286	rBV2	394	404	0.04%	0.005%
35	5.584	1318	1320	1324	rBB	291	195	0.02%	0.002%
36	5.607	1324	1327	1331	rBV2	318	258	0.02%	0.003%

Data Path : Z:\voasrv\HPCHEM1\MSVOA_U\Data\VU051122\
 Data File : VU048523.D
 Acq On : 11 May 2022 17:38
 Operator : SY/MD
 Sample : N2790-09
 Misc : 5.0mL/MSVOA_U/WATER
 ALS Vial : 19 Sample Multiplier: 1

Instrument :
 MSVOA_U
 ClientSampleId :
 BGNP8

Integration Parameters: LSCINT.P

Integrator: RTE
 Smoothing : OFF
 Sampling : 1
 Start Thrs: 0.2
 Stop Thrs : 0

Filtering: 5
 Min Area: 0 % of largest Peak
 Max Peaks: 100
 Peak Location: TOP

If leading or trailing edge < 100 prefer < Baseline drop else tangent >
 Peak separation: 5

Method : Z:\voasrv\HPCHEM1\MSVOA_U\Method\SFAMULM050622WMA.M
 Title : VOC Analysis

37	5.726	1338	1364	1388	rBV2	394053	1085353	100.00%	12.558%
38	5.925	1420	1426	1429	rBV4	463	504	0.05%	0.006%
39	5.970	1437	1440	1442	rBV	280	223	0.02%	0.003%
40	5.983	1442	1444	1449	rVB	366	215	0.02%	0.002%
41	6.031	1457	1459	1461	rBV	342	236	0.02%	0.003%
42	6.108	1481	1483	1487	rBV2	410	347	0.03%	0.004%
43	6.250	1512	1527	1548	rBV	336218	631495	58.18%	7.307%
44	6.414	1576	1578	1580	rBV2	362	253	0.02%	0.003%
45	6.462	1590	1593	1594	rBV	461	232	0.02%	0.003%
46	6.523	1603	1612	1624	rBV6	7879	17568	1.62%	0.203%
47	6.690	1647	1664	1689	rBV	247927	482600	44.46%	5.584%
48	6.883	1715	1724	1729	rBV4	1380	1811	0.17%	0.021%
49	6.967	1748	1750	1753	rBV	267	204	0.02%	0.002%
50	7.038	1768	1772	1774	rBV2	298	201	0.02%	0.002%
51	7.169	1807	1813	1815	rBV3	506	511	0.05%	0.006%
52	7.311	1852	1857	1858	rBV	282	213	0.02%	0.002%
53	7.388	1878	1881	1884	rBB	352	222	0.02%	0.003%
54	7.452	1899	1901	1906	rVB2	303	178	0.02%	0.002%
55	7.565	1923	1936	1964	rBV	146415	254345	23.43%	2.943%
56	7.793	2002	2007	2009	rBV2	389	419	0.04%	0.005%
57	7.806	2009	2011	2015	rVB3	489	340	0.03%	0.004%
58	7.851	2022	2025	2026	rBV	380	204	0.02%	0.002%
59	7.899	2026	2040	2055	rBV	503371	860942	79.32%	9.961%
60	8.112	2102	2106	2108	rBV	329	287	0.03%	0.003%
61	8.179	2115	2127	2148	rBV2	103865	180961	16.67%	2.094%
62	8.407	2194	2198	2200	rBV3	346	259	0.02%	0.003%
63	8.459	2210	2214	2215	rBV2	918	628	0.06%	0.007%
64	8.555	2241	2244	2246	rBV2	350	194	0.02%	0.002%
65	8.632	2255	2268	2294	rBV	339816	612797	56.46%	7.090%
66	9.066	2397	2403	2405	rBV2	359	414	0.04%	0.005%
67	9.234	2452	2455	2458	rBV2	245	214	0.02%	0.002%
68	9.417	2498	2512	2531	rBV	482957	801903	73.88%	9.278%
69	9.684	2591	2595	2596	rBV2	1162	739	0.07%	0.009%
70	9.735	2608	2611	2614	rVB2	295	188	0.02%	0.002%
71	9.755	2614	2617	2621	rBV	305	236	0.02%	0.003%
72	9.845	2635	2645	2649	rBV2	447	905	0.08%	0.010%
73	10.208	2752	2758	2760	rBV2	314	316	0.03%	0.004%
74	10.346	2796	2801	2810	rVB4	1491	1667	0.15%	0.019%
75	10.484	2840	2844	2847	rBV2	324	252	0.02%	0.003%
76	10.671	2895	2902	2906	rBV4	1461	1916	0.18%	0.022%

Data Path : Z:\voasrv\HPCHEM1\MSVOA_U\Data\VU051122\
 Data File : VU048523.D
 Acq On : 11 May 2022 17:38
 Operator : SY/MD
 Sample : N2790-09
 Misc : 5.0mL/MSVOA_U/WATER
 ALS Vial : 19 Sample Multiplier: 1

Instrument :
 MSVOA_U
 ClientSampleId :
 BGPN8

Integration Parameters: LSCINT.P

Integrator: RTE
 Smoothing : OFF
 Sampling : 1
 Start Thrs: 0.2
 Stop Thrs : 0

Filtering: 5
 Min Area: 0 % of largest Peak
 Max Peaks: 100
 Peak Location: TOP

If leading or trailing edge < 100 prefer < Baseline drop else tangent >
 Peak separation: 5

Method : Z:\voasrv\HPCHEM1\MSVOA_U\Method\SFAMULM050622WMA.M
 Title : VOC Analysis

77	10.758	2916	2929	2949	rVB	364324	594621	54.79%	6.880%
78	10.896	2966	2972	2981	rVB4	2179	3625	0.33%	0.042%
79	11.002	3002	3005	3008	rBV2	403	301	0.03%	0.003%
80	11.018	3008	3010	3012	rVV	332	183	0.02%	0.002%
81	11.047	3016	3019	3023	rBV2	480	315	0.03%	0.004%
82	11.282	3089	3092	3096	rBV2	204	207	0.02%	0.002%
83	11.693	3212	3220	3230	rBV6	7202	11830	1.09%	0.137%
84	11.748	3231	3237	3243	rVB6	2759	3612	0.33%	0.042%
85	11.812	3244	3257	3277	rBV	517867	830563	76.52%	9.610%
86	11.973	3304	3307	3313	rVB4	1266	1119	0.10%	0.013%
87	12.044	3326	3329	3330	rBV	311	204	0.02%	0.002%
88	12.192	3362	3375	3394	rBV	513100	844362	77.80%	9.770%
89	12.320	3409	3415	3418	rBV4	934	878	0.08%	0.010%
90	12.780	3555	3558	3560	rBV3	456	253	0.02%	0.003%
91	12.815	3565	3569	3574	rBV	368	394	0.04%	0.005%
92	12.893	3585	3593	3607	rVB5	10539	16706	1.54%	0.193%
93	13.034	3633	3637	3639	rBV	261	223	0.02%	0.003%
94	13.092	3652	3655	3660	rBV	441	369	0.03%	0.004%
95	13.221	3692	3695	3697	rBV3	606	423	0.04%	0.005%
96	13.340	3729	3732	3740	rBV2	437	441	0.04%	0.005%
97	13.571	3801	3804	3806	rBV2	434	245	0.02%	0.003%
98	13.587	3806	3809	3811	rBV2	426	300	0.03%	0.003%
99	13.700	3840	3844	3849	rBV2	594	559	0.05%	0.006%
100	14.153	3982	3985	3987	rBV	406	285	0.03%	0.003%

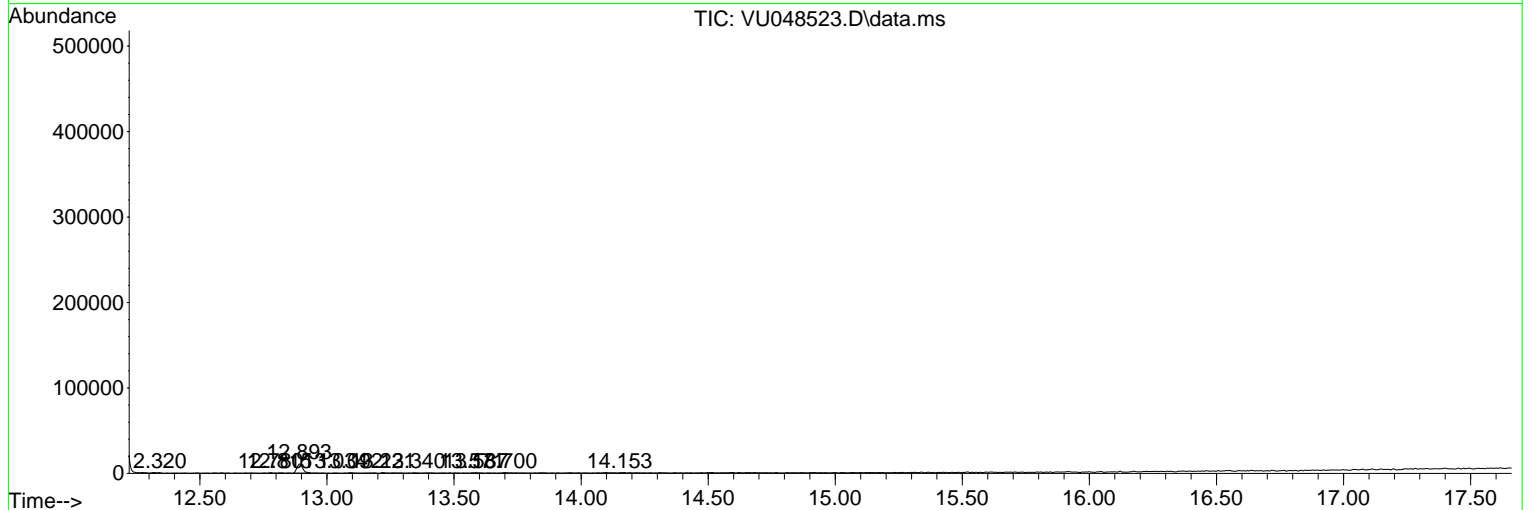
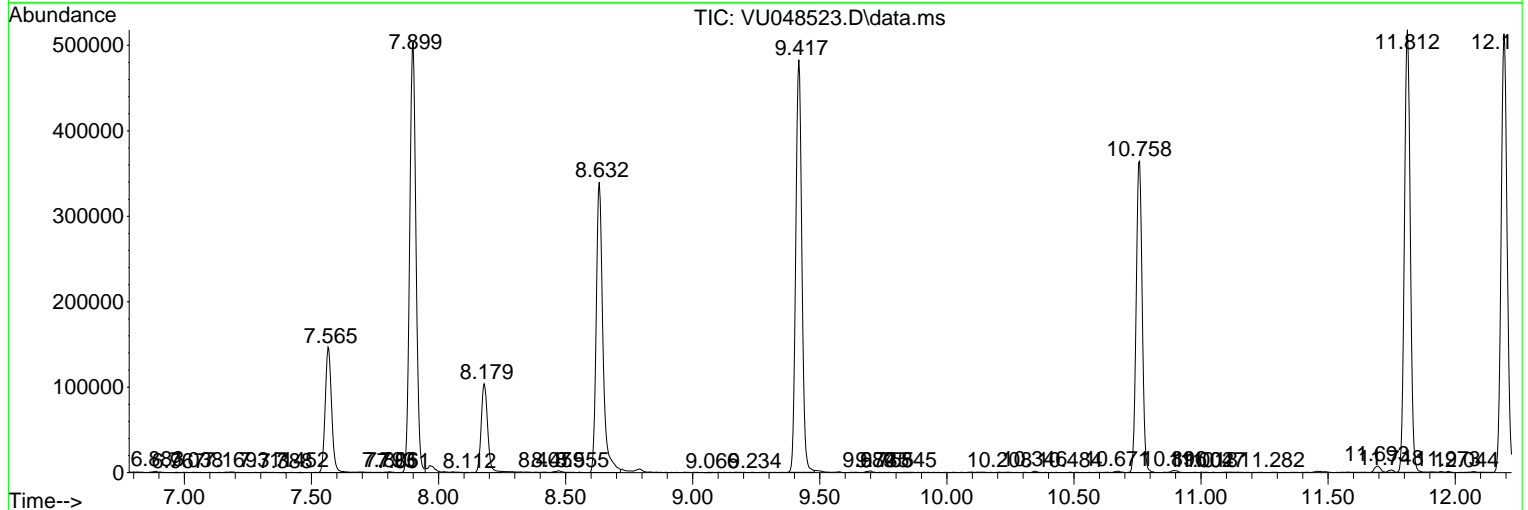
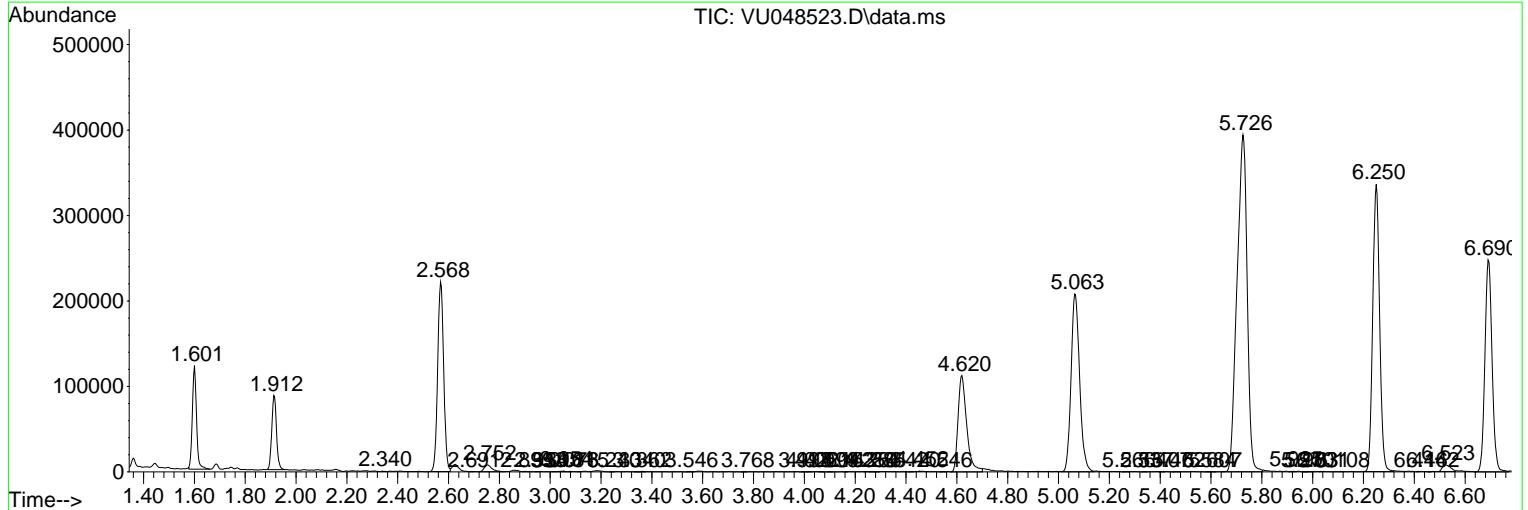
Sum of corrected areas: 8642777

Data Path : Z:\voasrv\HPCHEM1\MSVOA_U\Data\VU051122\
 Data File : VU048523.D
 Acq On : 11 May 2022 17:38
 Operator : SY/MD
 Sample : N2790-09
 Misc : 5.0mL/MSVOA_U/WATER
 ALS Vial : 19 Sample Multiplier: 1

Instrument :
 MSVOA_U
ClientSampleId :
 BGP8

Quant Method : Z:\voasrv\HPCHEM1\MSVOA_U\Method\SFAMULM050622WMA.M
 Quant Title : VOC Analysis

TIC Library : C:\Database\NIST20.L
 TIC Integration Parameters: LSCINT.P



Library Search Compound Report

Data Path : Z:\voasrv\HPCHEM1\MSVOA_U\Data\VU051122\
Data File : VU048523.D
Acq On : 11 May 2022 17:38
Operator : SY/MD
Sample : N2790-09
Misc : 5.0mL/MSVOA_U/WATER
ALS Vial : 19 Sample Multiplier: 1

Instrument :
MSVOA_U
ClientSampleId :
BGPN8

Quant Method : Z:\voasrv\HPCHEM1\MSVOA_U\Method\SFAMULM050622WMA.M
Quant Title : VOC Analysis

TIC Library : C:\Database\NIST20.L
TIC Integration Parameters: LSCINT.P

No Library Search Compounds Detected

Data Path : Z:\voasrv\HPCHEM1\MSVOA_U\Data\VU051122\
Data File : VU048523.D
Acq On : 11 May 2022 17:38
Operator : SY/MD
Sample : N2790-09
Misc : 5.0mL/MSVOA_U/WATER
ALS Vial : 19 Sample Multiplier: 1

Instrument :
MSVOA_U
ClientSampleId :
BGPN8

Quant Method : Z:\voasrv\HPCHEM1\MSVOA_U\Method\SFAMULM050622WMA.M
Quant Title : VOC Analysis

TIC Library : C:\Database\NIST20.L
TIC Integration Parameters: LSCINT.P

TIC Top Hit name	RT	EstConc	Units	Response	--Internal Standard--		
					#	RT	Resp Conc
