

Data Path : Z:\voasrv\HPCHEM1\MSVOA\_U\Data\VU051222\  
 Data File : VU048534.D  
 Acq On : 12 May 2022 12:19  
 Operator : SY/MD  
 Sample : N2801-01  
 Misc : 5.0mL/MSVOA\_U/WATER  
 ALS Vial : 7 Sample Multiplier: 1

Instrument :  
 MSVOA\_U  
 ClientSampleId :  
 EXLB4

Integration Parameters: LSCINT.P

Integrator: RTE  
 Smoothing : OFF  
 Sampling : 1  
 Start Thrs : 0.2  
 Stop Thrs : 0

Filtering: 5  
 Min Area: 0 % of largest Peak  
 Max Peaks: 100  
 Peak Location: TOP

If leading or trailing edge < 100 prefer < Baseline drop else tangent >  
 Peak separation: 5

Method : Z:\voasrv\HPCHEM1\MSVOA\_U\Method\SFAMULM050622WMA.M  
 Title : VOC Analysis

Signal : TIC: VU048534.D\data.ms

peak #	R.T. min	first scan	max scan	last scan	PK TY	peak height	corr. area	corr. % max.	% of total
1	1.600	74	81	99	rVB	111036	127770	11.62%	1.474%
2	1.916	171	179	194	rVB	88551	116317	10.58%	1.342%
3	2.568	370	382	401	rBV	221123	361706	32.90%	4.172%
4	2.687	415	419	421	rVB	348	234	0.02%	0.003%
5	2.797	451	453	456	rVB2	701	333	0.03%	0.004%
6	2.883	476	480	483	rBV2	335	347	0.03%	0.004%
7	3.051	526	532	539	rVV5	1091	1324	0.12%	0.015%
8	3.189	571	575	576	rBV	348	262	0.02%	0.003%
9	3.211	580	582	586	rVB	327	185	0.02%	0.002%
10	3.292	601	607	608	rBV	180	197	0.02%	0.002%
11	3.478	661	665	667	rBV	309	262	0.02%	0.003%
12	3.543	681	685	688	rBV2	252	215	0.02%	0.002%
13	3.690	728	731	734	rBV2	286	241	0.02%	0.003%
14	3.758	746	752	755	rBB	226	252	0.02%	0.003%
15	3.858	781	783	787	rBV	283	218	0.02%	0.003%
16	3.896	792	795	796	rBV	273	173	0.02%	0.002%
17	3.954	811	813	815	rBV	263	189	0.02%	0.002%
18	4.131	862	868	872	rBB	130	183	0.02%	0.002%
19	4.215	889	894	898	rBB2	270	267	0.02%	0.003%
20	4.337	928	932	937	rBB	213	271	0.02%	0.003%
21	4.526	989	991	999	rBV	266	354	0.03%	0.004%
22	4.626	1009	1022	1051	rBV	109316	275427	25.05%	3.177%
23	4.903	1106	1108	1111	rBV	360	178	0.02%	0.002%
24	4.922	1111	1114	1116	rBV	232	180	0.02%	0.002%
25	5.067	1140	1159	1181	rBV	209523	476414	43.34%	5.496%
26	5.253	1215	1217	1219	rVB3	435	178	0.02%	0.002%
27	5.292	1226	1229	1236	rVB3	471	447	0.04%	0.005%
28	5.353	1245	1248	1249	rBV	326	186	0.02%	0.002%
29	5.468	1281	1284	1288	rVB2	291	240	0.02%	0.003%
30	5.520	1297	1300	1304	rVB2	257	191	0.02%	0.002%
31	5.549	1305	1309	1310	rBV	290	193	0.02%	0.002%
32	5.632	1331	1335	1342	rBB2	306	398	0.04%	0.005%
33	5.726	1342	1364	1395	rBV2	401976	1099374	100.00%	12.682%
34	5.880	1409	1412	1418	rBV3	328	429	0.04%	0.005%
35	5.944	1428	1432	1434	rBV	270	202	0.02%	0.002%
36	5.973	1439	1441	1445	rBV2	312	251	0.02%	0.003%

Data Path : Z:\voasrv\HPCHEM1\MSVOA\_U\Data\VU051222\  
 Data File : VU048534.D  
 Acq On : 12 May 2022 12:19  
 Operator : SY/MD  
 Sample : N2801-01  
 Misc : 5.0mL/MSVOA\_U/WATER  
 ALS Vial : 7 Sample Multiplier: 1

Instrument :  
 MSVOA\_U  
 ClientSampleId :  
 EXLB4

## Integration Parameters: LSCINT.P

Integrator: RTE  
 Smoothing : OFF  
 Sampling : 1  
 Start Thrs: 0.2  
 Stop Thrs : 0

Filtering: 5  
 Min Area: 0 % of largest Peak  
 Max Peaks: 100  
 Peak Location: TOP

If leading or trailing edge < 100 prefer < Baseline drop else tangent >  
 Peak separation: 5

Method : Z:\voasrv\HPCHEM1\MSVOA\_U\Method\SFAMULM050622WMA.M  
 Title : VOC Analysis

37	6.025	1454	1457	1460	rVB2	351	215	0.02%	0.002%
38	6.047	1460	1464	1470	rBV3	588	557	0.05%	0.006%
39	6.137	1490	1492	1495	rBV	312	162	0.01%	0.002%
40	6.157	1495	1498	1502	rVB	372	270	0.02%	0.003%
41	6.250	1512	1527	1546	rBV	333276	631107	57.41%	7.280%
42	6.472	1594	1596	1599	rBV	311	163	0.01%	0.002%
43	6.536	1607	1616	1622	rBV5	3178	5198	0.47%	0.060%
44	6.690	1650	1664	1685	rBV2	246962	480457	43.70%	5.542%
45	6.796	1693	1697	1698	rBV3	611	387	0.04%	0.004%
46	6.809	1698	1701	1708	rVB3	989	1021	0.09%	0.012%
47	6.845	1708	1712	1716	rBV2	269	245	0.02%	0.003%
48	6.980	1751	1754	1758	rVB2	315	221	0.02%	0.003%
49	7.038	1768	1772	1774	rBV	187	181	0.02%	0.002%
50	7.054	1774	1777	1780	rBV	231	187	0.02%	0.002%
51	7.102	1786	1792	1793	rBV2	2154	1626	0.15%	0.019%
52	7.185	1813	1818	1821	rBV4	504	533	0.05%	0.006%
53	7.292	1848	1851	1853	rBV	238	157	0.01%	0.002%
54	7.430	1891	1894	1897	rBB	385	253	0.02%	0.003%
55	7.449	1897	1900	1902	rBV2	289	183	0.02%	0.002%
56	7.510	1916	1919	1920	rBV2	304	172	0.02%	0.002%
57	7.568	1924	1937	1958	rBV2	141645	256192	23.30%	2.955%
58	7.700	1973	1978	1982	rBV4	612	531	0.05%	0.006%
59	7.771	1997	2000	2003	rBV2	419	275	0.03%	0.003%
60	7.841	2019	2022	2024	rBV2	415	304	0.03%	0.004%
61	7.899	2026	2040	2058	rBV	507460	867000	78.86%	10.001%
62	8.179	2115	2127	2144	rBV	106125	181958	16.55%	2.099%
63	8.472	2210	2218	2230	rBV2	4760	8233	0.75%	0.095%
64	8.552	2235	2243	2255	rVB4	7390	11502	1.05%	0.133%
65	8.636	2255	2269	2296	rBV	352250	650021	59.13%	7.498%
66	8.909	2350	2354	2362	rVV	319	424	0.04%	0.005%
67	8.941	2362	2364	2369	rVV2	274	176	0.02%	0.002%
68	9.108	2412	2416	2421	rVB2	516	412	0.04%	0.005%
69	9.227	2450	2453	2456	rBV	284	253	0.02%	0.003%
70	9.259	2460	2463	2468	rVB2	304	186	0.02%	0.002%
71	9.295	2468	2474	2476	rBV	380	364	0.03%	0.004%
72	9.333	2484	2486	2492	rVB	277	166	0.02%	0.002%
73	9.417	2496	2512	2534	rBV	477132	795233	72.34%	9.173%
74	9.565	2555	2558	2559	rBV	437	241	0.02%	0.003%
75	9.819	2630	2637	2643	rBV2	275	464	0.04%	0.005%
76	10.089	2718	2721	2723	rBV2	365	214	0.02%	0.002%

Data Path : Z:\voasrv\HPCHEM1\MSVOA\_U\Data\VU051222\  
 Data File : VU048534.D  
 Acq On : 12 May 2022 12:19  
 Operator : SY/MD  
 Sample : N2801-01  
 Misc : 5.0mL/MSVOA\_U/WATER  
 ALS Vial : 7 Sample Multiplier: 1

Instrument :  
 MSVOA\_U  
 ClientSampleId :  
 EXLB4

Integration Parameters: LSCINT.P

Integrator: RTE  
 Smoothing : OFF Filtering: 5  
 Sampling : 1 Min Area: 0 % of largest Peak  
 Start Thrs: 0.2 Max Peaks: 100  
 Stop Thrs : 0 Peak Location: TOP

If leading or trailing edge < 100 prefer < Baseline drop else tangent >  
 Peak separation: 5

Method : Z:\voasrv\HPCHEM1\MSVOA\_U\Method\SFAMULM050622WMA.M  
 Title : VOC Analysis

77	10.266	2771	2776	2781	rVB2	385	423	0.04%	0.005%
78	10.475	2837	2841	2844	rBV3	462	397	0.04%	0.005%
79	10.520	2853	2855	2859	rBV2	259	219	0.02%	0.003%
80	10.603	2878	2881	2887	rBV	288	256	0.02%	0.003%
81	10.671	2896	2902	2907	rBV3	1304	1390	0.13%	0.016%
82	10.758	2916	2929	2949	rBV	366366	593145	53.95%	6.842%
83	10.896	2964	2972	2982	rVB3	7297	11697	1.06%	0.135%
84	11.118	3039	3041	3044	rBV2	289	180	0.02%	0.002%
85	11.134	3044	3046	3051	rVB	314	187	0.02%	0.002%
86	11.333	3106	3108	3111	rBV	379	187	0.02%	0.002%
87	11.385	3120	3124	3126	rBV	219	201	0.02%	0.002%
88	11.455	3143	3146	3153	rBV5	928	1111	0.10%	0.013%
89	11.584	3183	3186	3190	rVB3	428	334	0.03%	0.004%
90	11.697	3216	3221	3224	rBV2	582	528	0.05%	0.006%
91	11.812	3245	3257	3274	rBV	524013	827077	75.23%	9.541%
92	12.070	3329	3337	3344	rBV7	3564	5376	0.49%	0.062%
93	12.192	3363	3375	3397	rBV	524959	860162	78.24%	9.922%
94	12.288	3402	3405	3410	rVB4	570	427	0.04%	0.005%
95	12.430	3447	3449	3457	rBV2	385	388	0.04%	0.004%
96	12.893	3589	3593	3597	rBV2	308	281	0.03%	0.003%
97	13.114	3658	3662	3666	rBV2	457	456	0.04%	0.005%
98	13.568	3800	3803	3805	rBV	481	313	0.03%	0.004%
99	14.217	4001	4005	4010	rBV3	566	728	0.07%	0.008%
100	14.365	4047	4051	4053	rBV2	523	405	0.04%	0.005%

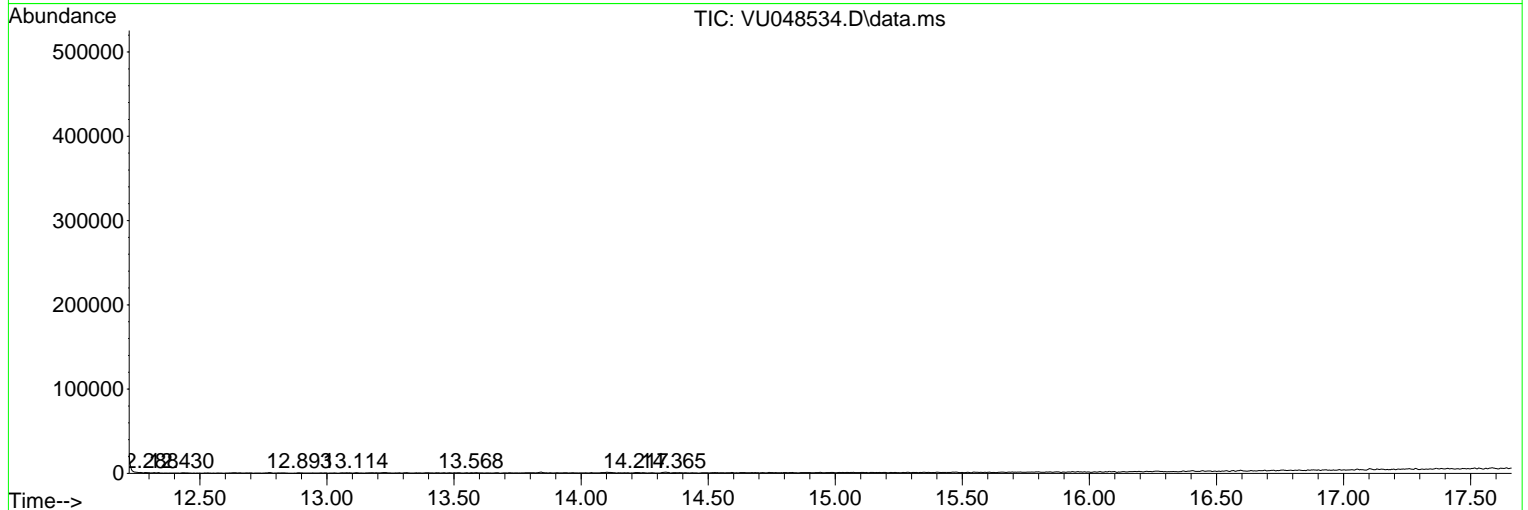
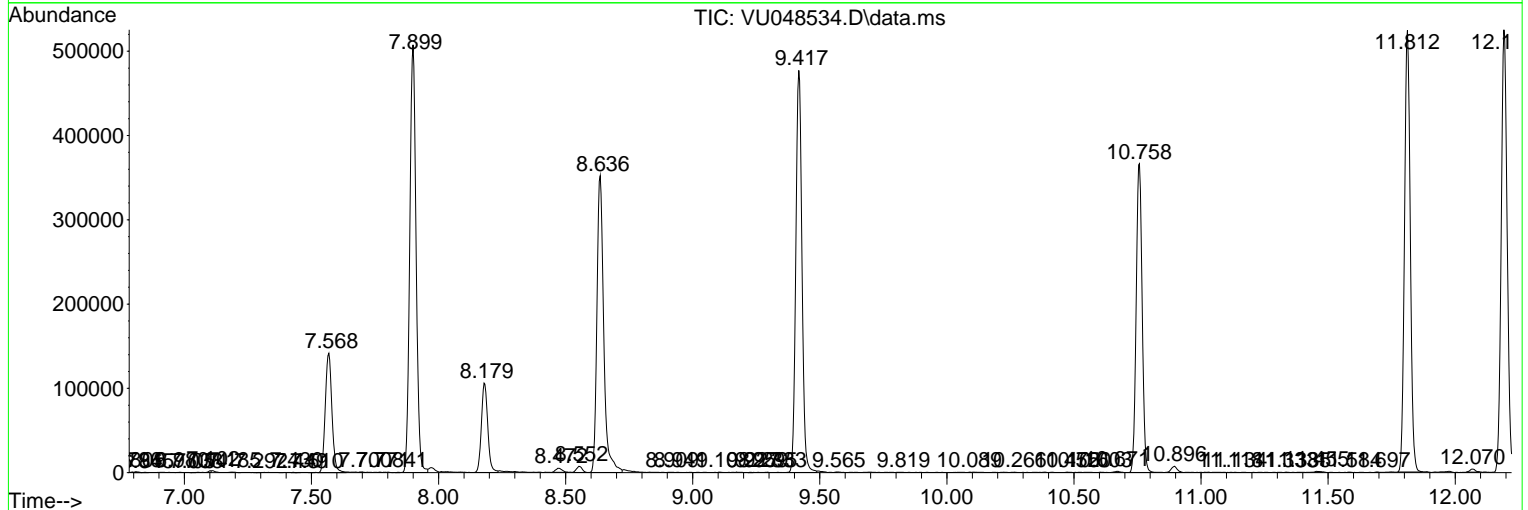
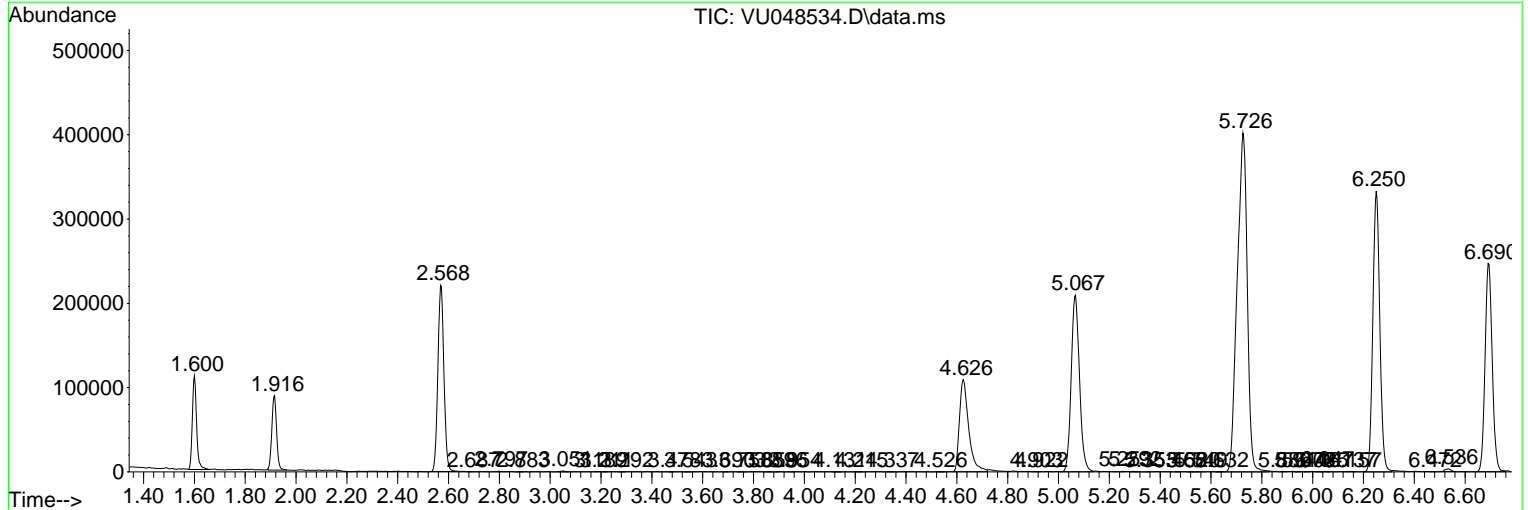
Sum of corrected areas: 8668900

Data Path : Z:\voasrv\HPCHEM1\MSVOA\_U\Data\VU051222\  
 Data File : VU048534.D  
 Acq On : 12 May 2022 12:19  
 Operator : SY/MD  
 Sample : N2801-01  
 Misc : 5.0mL/MSVOA\_U/WATER  
 ALS Vial : 7 Sample Multiplier: 1

Instrument :  
 MSVOA\_U  
 ClientSampleId :  
 EXLB4

Quant Method : Z:\voasrv\HPCHEM1\MSVOA\_U\Method\SFAMULM050622WMA.M  
 Quant Title : VOC Analysis

TIC Library : C:\Database\NIST20.L  
 TIC Integration Parameters: LSCINT.P



Library Search Compound Report

Data Path : Z:\voasrv\HPCHEM1\MSVOA\_U\Data\VU051222\  
Data File : VU048534.D  
Acq On : 12 May 2022 12:19  
Operator : SY/MD  
Sample : N2801-01  
Misc : 5.0mL/MSVOA\_U/WATER  
ALS Vial : 7 Sample Multiplier: 1

Instrument :  
MSVOA\_U  
ClientSampleId :  
EXLB4

Quant Method : Z:\voasrv\HPCHEM1\MSVOA\_U\Method\SFAMULM050622WMA.M  
Quant Title : VOC Analysis

TIC Library : C:\Database\NIST20.L  
TIC Integration Parameters: LSCINT.P

No Library Search Compounds Detected

\*\*\*\*\*

Data Path : Z:\voasrv\HPCHEM1\MSVOA\_U\Data\VU051222\  
Data File : VU048534.D  
Acq On : 12 May 2022 12:19  
Operator : SY/MD  
Sample : N2801-01  
Misc : 5.0mL/MSVOA\_U/WATER  
ALS Vial : 7 Sample Multiplier: 1

Instrument :  
MSVOA\_U  
ClientSampleId :  
EXLB4

Quant Method : Z:\voasrv\HPCHEM1\MSVOA\_U\Method\SFAMULM050622WMA.M  
Quant Title : VOC Analysis

TIC Library : C:\Database\NIST20.L  
TIC Integration Parameters: LSCINT.P

TIC Top Hit name	RT	EstConc	Units	Response	--Internal Standard--		
					#	RT	Resp Conc

---