

Data Path : Z:\voasrv\HPCHEM1\MSVOA_U\Data\VU051222\
 Data File : VU048545.D
 Acq On : 12 May 2022 16:38
 Operator : SY/MD
 Sample : N2790-21
 Misc : 5.0mL/MSVOA_U/WATER
 ALS Vial : 18 Sample Multiplier: 1

Instrument :
 MSVOA_U
 ClientSampleId :
 BGPP8

Integration Parameters: LSCINT.P

Integrator: RTE
 Smoothing : OFF
 Sampling : 1
 Start Thrs : 0.2
 Stop Thrs : 0

Filtering: 5
 Min Area: 0 % of largest Peak
 Max Peaks: 100
 Peak Location: TOP

If leading or trailing edge < 100 prefer < Baseline drop else tangent >
 Peak separation: 5

Method : Z:\voasrv\HPCHEM1\MSVOA_U\Method\SFAMULM050622WMA.M
 Title : VOC Analysis

Signal : TIC: VU048545.D\data.ms

peak #	R.T. min	first scan	max scan	last scan	PK TY	peak height	corr. area	corr. % max.	% of total
1	1.600	73	81	92	rVB	117681	135833	12.29%	1.548%
2	1.912	170	178	195	rBV	88484	114874	10.39%	1.309%
3	2.568	368	382	394	rBV	222884	363374	32.88%	4.142%
4	2.710	423	426	430	rVB2	369	296	0.03%	0.003%
5	2.755	431	440	455	rVV2	4717	9276	0.84%	0.106%
6	3.047	526	531	537	rBV4	544	692	0.06%	0.008%
7	3.108	547	550	553	rBV	251	122	0.01%	0.001%
8	3.141	558	560	565	rVB	446	356	0.03%	0.004%
9	3.186	565	574	578	rBV5	1430	2380	0.22%	0.027%
10	3.240	588	591	594	rBV	264	168	0.02%	0.002%
11	3.324	612	617	620	rVB2	425	353	0.03%	0.004%
12	3.398	638	640	642	rBV2	337	185	0.02%	0.002%
13	3.443	649	654	657	rBV	263	268	0.02%	0.003%
14	3.497	668	671	673	rBV	178	139	0.01%	0.002%
15	3.559	686	690	691	rBV2	215	110	0.01%	0.001%
16	3.575	691	695	697	rBV2	447	314	0.03%	0.004%
17	3.633	711	713	717	rVB2	276	172	0.02%	0.002%
18	3.690	728	731	734	rBV	402	311	0.03%	0.004%
19	3.922	800	803	809	rBV2	324	387	0.04%	0.004%
20	3.973	816	819	823	rBV2	214	219	0.02%	0.002%
21	4.063	844	847	851	rVB	353	301	0.03%	0.003%
22	4.089	851	855	858	rBV	176	191	0.02%	0.002%
23	4.173	878	881	886	rBB2	281	225	0.02%	0.003%
24	4.214	892	894	895	rBV	219	115	0.01%	0.001%
25	4.288	915	917	919	rVB	262	126	0.01%	0.001%
26	4.314	922	925	928	rBV2	349	327	0.03%	0.004%
27	4.382	944	946	950	rVB2	256	213	0.02%	0.002%
28	4.420	951	958	961	rBV2	369	534	0.05%	0.006%
29	4.501	981	983	984	rBV2	211	88	0.01%	0.001%
30	4.514	984	987	991	rVB	361	276	0.02%	0.003%
31	4.536	991	994	995	rBV	259	163	0.01%	0.002%
32	4.565	1000	1003	1007	rBV2	336	211	0.02%	0.002%
33	4.620	1007	1020	1042	rBV	115647	278965	25.24%	3.179%
34	4.999	1136	1138	1140	rBV	249	146	0.01%	0.002%
35	5.067	1142	1159	1181	rVV	209009	460666	41.68%	5.250%
36	5.205	1199	1202	1204	rBV2	200	140	0.01%	0.002%

Data Path : Z:\voasrv\HPCHEM1\MSVOA_U\Data\VU051222\
 Data File : VU048545.D
 Acq On : 12 May 2022 16:38
 Operator : SY/MD
 Sample : N2790-21
 Misc : 5.0mL/MSVOA_U/WATER
 ALS Vial : 18 Sample Multiplier: 1

Instrument :
 MSVOA_U
 ClientSampleId :
 BGPP8

Integration Parameters: LSCINT.P

Integrator: RTE
 Smoothing : OFF
 Sampling : 1
 Start Thrs: 0.2
 Stop Thrs : 0

Filtering: 5
 Min Area: 0 % of largest Peak
 Max Peaks: 100
 Peak Location: TOP

If leading or trailing edge < 100 prefer < Baseline drop else tangent >
 Peak separation: 5

Method : Z:\voasrv\HPCHEM1\MSVOA_U\Method\SFAMULM050622WMA.M
 Title : VOC Analysis

37	5.221	1204	1207	1210	rVB2	338	231	0.02%	0.003%
38	5.279	1221	1225	1226	rBV	460	286	0.03%	0.003%
39	5.375	1252	1255	1258	rBV	267	177	0.02%	0.002%
40	5.430	1270	1272	1276	rBV2	265	190	0.02%	0.002%
41	5.465	1281	1283	1285	rBV2	174	103	0.01%	0.001%
42	5.497	1290	1293	1294	rBV	243	167	0.02%	0.002%
43	5.526	1300	1302	1312	rVB2	307	331	0.03%	0.004%
44	5.726	1341	1364	1388	rBV2	401823	1105178	100.00%	12.596%
45	5.996	1444	1448	1452	rVB2	578	476	0.04%	0.005%
46	6.015	1452	1454	1455	rBV	232	120	0.01%	0.001%
47	6.060	1466	1468	1470	rBV	227	114	0.01%	0.001%
48	6.076	1471	1473	1477	rVB	268	177	0.02%	0.002%
49	6.118	1478	1486	1490	rBV	454	616	0.06%	0.007%
50	6.150	1491	1496	1497	rBV2	557	379	0.03%	0.004%
51	6.250	1512	1527	1547	rBV	336310	637253	57.66%	7.263%
52	6.533	1606	1615	1629	rBV4	5148	9394	0.85%	0.107%
53	6.584	1629	1631	1633	rBV2	350	230	0.02%	0.003%
54	6.616	1639	1641	1645	rVB2	476	281	0.03%	0.003%
55	6.690	1649	1664	1687	rBV	254015	492059	44.52%	5.608%
56	6.896	1725	1728	1733	rVB2	540	329	0.03%	0.004%
57	7.021	1763	1767	1770	rVV	260	282	0.03%	0.003%
58	7.083	1782	1786	1789	rBV2	290	272	0.02%	0.003%
59	7.160	1800	1810	1813	rBV4	1049	1530	0.14%	0.017%
60	7.295	1848	1852	1855	rBV	373	302	0.03%	0.003%
61	7.362	1870	1873	1876	rBV	271	190	0.02%	0.002%
62	7.443	1895	1898	1900	rBV	174	94	0.01%	0.001%
63	7.468	1903	1906	1908	rBV2	215	119	0.01%	0.001%
64	7.568	1924	1937	1961	rBV	144059	256612	23.22%	2.925%
65	7.758	1991	1996	1999	rBV2	363	319	0.03%	0.004%
66	7.803	2006	2010	2013	rBV2	237	171	0.02%	0.002%
67	7.899	2027	2040	2057	rBV	512201	873091	79.00%	9.951%
68	8.179	2115	2127	2145	rBV	108456	186515	16.88%	2.126%
69	8.468	2211	2217	2231	rVB3	3765	6778	0.61%	0.077%
70	8.533	2232	2237	2240	rVB2	255	234	0.02%	0.003%
71	8.591	2252	2255	2256	rBV2	344	189	0.02%	0.002%
72	8.632	2256	2268	2298	rVV	354103	642137	58.10%	7.319%
73	8.915	2353	2356	2357	rBV2	194	127	0.01%	0.001%
74	9.163	2431	2433	2438	rVB	511	364	0.03%	0.004%
75	9.185	2438	2440	2441	rBV	260	125	0.01%	0.001%
76	9.201	2441	2445	2446	rVV2	358	180	0.02%	0.002%

Data Path : Z:\voasrv\HPCHEM1\MSVOA_U\Data\VU051222\
 Data File : VU048545.D
 Acq On : 12 May 2022 16:38
 Operator : SY/MD
 Sample : N2790-21
 Misc : 5.0mL/MSVOA_U/WATER
 ALS Vial : 18 Sample Multiplier: 1

Instrument :
 MSVOA_U
 ClientSampleId :
 BGPP8

Integration Parameters: LSCINT.P

Integrator: RTE
 Smoothing : OFF Filtering: 5
 Sampling : 1 Min Area: 0 % of largest Peak
 Start Thrs: 0.2 Max Peaks: 100
 Stop Thrs : 0 Peak Location: TOP

If leading or trailing edge < 100 prefer < Baseline drop else tangent >
 Peak separation: 5

Method : Z:\voasrv\HPCHEM1\MSVOA_U\Method\SFAMULM050622WMA.M
 Title : VOC Analysis

77	9.253	2458	2461	2463	rBV	223	153	0.01%	0.002%
78	9.417	2498	2512	2531	rBV	487689	807675	73.08%	9.205%
79	9.648	2580	2584	2589	rVB2	500	405	0.04%	0.005%
80	9.693	2590	2598	2604	rBV3	1011	1528	0.14%	0.017%
81	10.381	2808	2812	2814	rBV	325	207	0.02%	0.002%
82	10.652	2894	2896	2897	rBV	328	125	0.01%	0.001%
83	10.758	2915	2929	2951	rVB	380480	619148	56.02%	7.057%
84	10.893	2962	2971	2982	rBV	5696	9253	0.84%	0.105%
85	11.098	3031	3035	3037	rBV3	375	291	0.03%	0.003%
86	11.147	3046	3050	3055	rBV2	364	395	0.04%	0.005%
87	11.253	3080	3083	3085	rBV	152	108	0.01%	0.001%
88	11.301	3095	3098	3101	rBV2	427	298	0.03%	0.003%
89	11.462	3140	3148	3154	rBV4	1174	1989	0.18%	0.023%
90	11.690	3214	3219	3227	rVB4	2404	3078	0.28%	0.035%
91	11.742	3232	3235	3240	rBV3	704	649	0.06%	0.007%
92	11.812	3244	3257	3279	rBV	540752	852977	77.18%	9.722%
93	12.143	3357	3360	3362	rBV	420	185	0.02%	0.002%
94	12.192	3362	3375	3400	rVV	539329	880287	79.65%	10.033%
95	12.340	3415	3421	3425	rBV4	583	530	0.05%	0.006%
96	12.722	3537	3540	3541	rBV	235	123	0.01%	0.001%
97	12.790	3559	3561	3567	rVB2	323	170	0.02%	0.002%
98	12.896	3589	3594	3600	rBV5	2619	3734	0.34%	0.043%
99	13.420	3755	3757	3758	rBV	320	98	0.01%	0.001%
100	14.516	4096	4098	4099	rBV	468	236	0.02%	0.003%

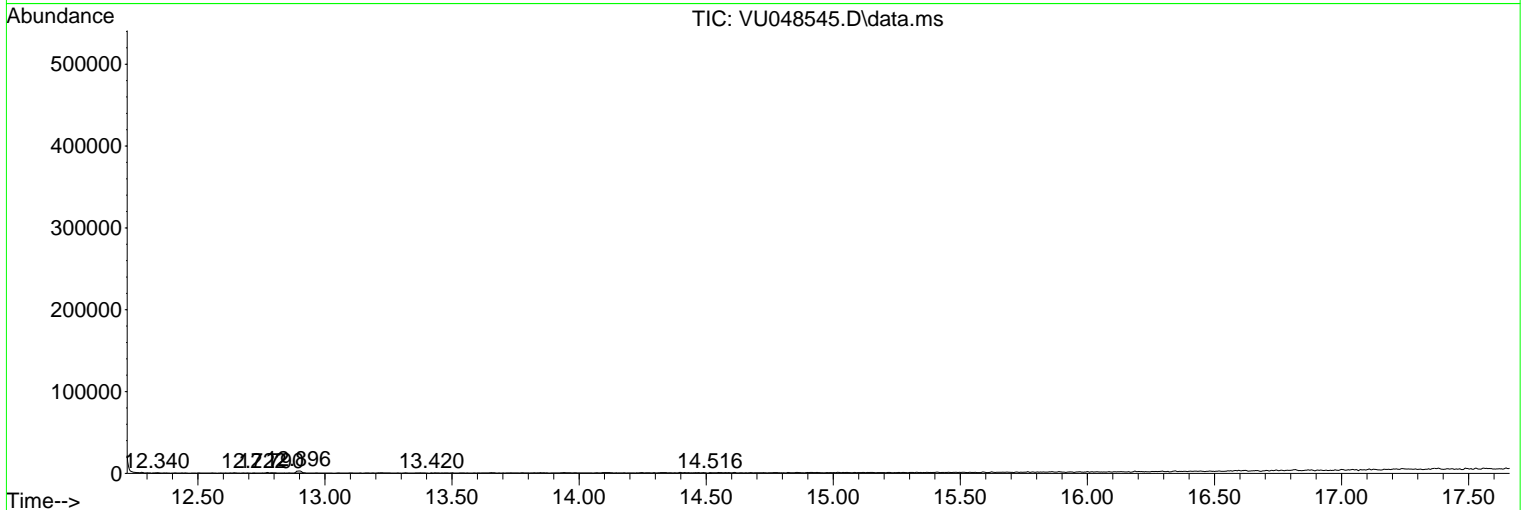
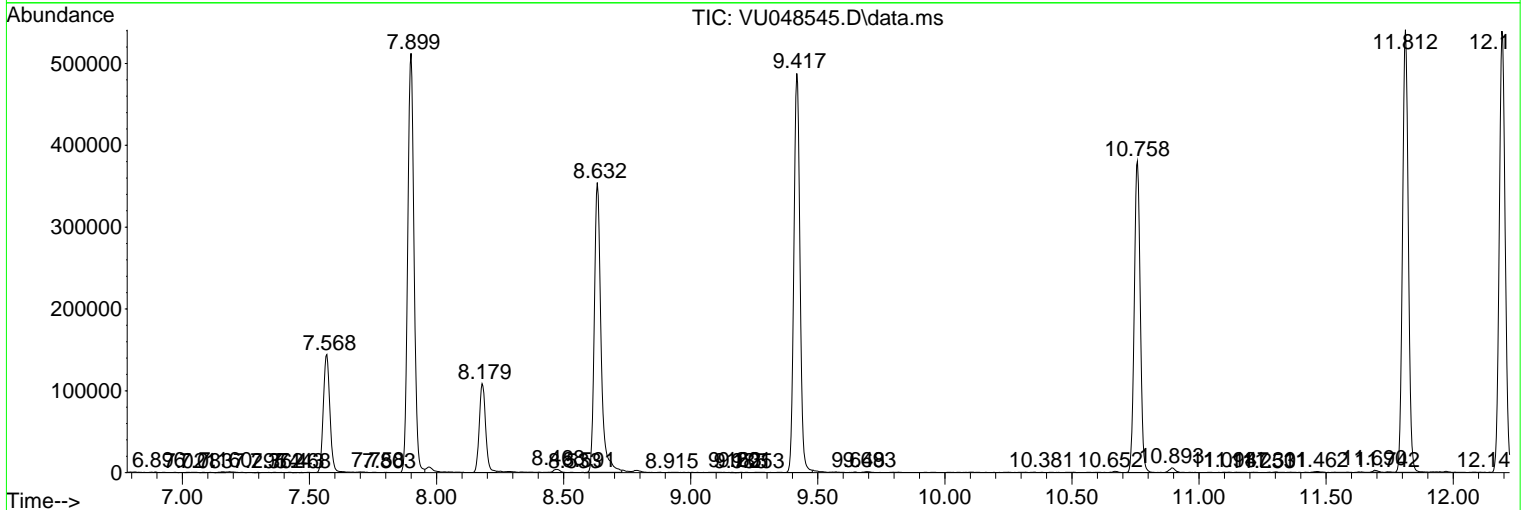
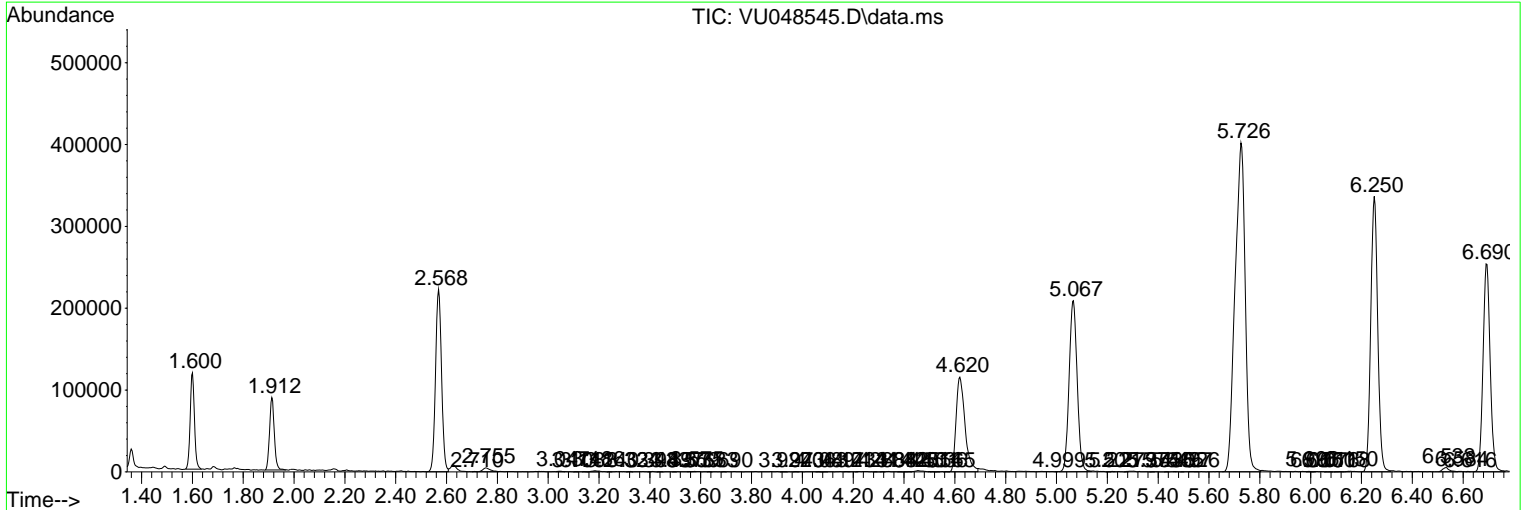
Sum of corrected areas: 8773880

Data Path : Z:\voasrv\HPCHEM1\MSVOA_U\Data\VU051222\
 Data File : VU048545.D
 Acq On : 12 May 2022 16:38
 Operator : SY/MD
 Sample : N2790-21
 Misc : 5.0mL/MSVOA_U/WATER
 ALS Vial : 18 Sample Multiplier: 1

Instrument :
 MSVOA_U
ClientSampleId :
 BGPP8

Quant Method : Z:\voasrv\HPCHEM1\MSVOA_U\Method\SFAMULM050622WMA.M
 Quant Title : VOC Analysis

TIC Library : C:\Database\NIST20.L
 TIC Integration Parameters: LSCINT.P



Library Search Compound Report

Data Path : Z:\voasrv\HPCHEM1\MSVOA_U\Data\VU051222\
Data File : VU048545.D
Acq On : 12 May 2022 16:38
Operator : SY/MD
Sample : N2790-21
Misc : 5.0mL/MSVOA_U/WATER
ALS Vial : 18 Sample Multiplier: 1

Instrument :
MSVOA_U
ClientSampleId :
BGPP8

Quant Method : Z:\voasrv\HPCHEM1\MSVOA_U\Method\SFAMULM050622WMA.M
Quant Title : VOC Analysis

TIC Library : C:\Database\NIST20.L
TIC Integration Parameters: LSCINT.P

No Library Search Compounds Detected

Data Path : Z:\voasrv\HPCHEM1\MSVOA_U\Data\VU051222\
Data File : VU048545.D
Acq On : 12 May 2022 16:38
Operator : SY/MD
Sample : N2790-21
Misc : 5.0mL/MSVOA_U/WATER
ALS Vial : 18 Sample Multiplier: 1

Instrument :
MSVOA_U
ClientSampleId :
BGPP8

Quant Method : Z:\voasrv\HPCHEM1\MSVOA_U\Method\SFAMULM050622WMA.M
Quant Title : VOC Analysis

TIC Library : C:\Database\NIST0.L
TIC Integration Parameters: LSCINT.P

TIC Top Hit name	RT	EstConc	Units	Response	--Internal Standard--			
					#	RT	Resp	Conc
