

Data Path : Z:\VOASRV\HPCHEM1\MSVOA U\DATA\VU051319\
 Data File : VU031959.D
 Acq On : 13 May 2019 09:55
 Operator : JC/SP
 Sample : VU0513WBL01
 Misc : 25.0mL/MSVOA U/WATER
 ALS Vial : 3 Sample Multiplier: 1

Instrument :
 MSVOA_U
 ClientSampleId :
 VBLK15

Integration Parameters: rteint.p
 Integrator: RTE
 Smoothing : ON
 Sampling : 1
 Start Thrs: 0.1
 Stop Thrs : 0

Filtering: 5
 Min Area: 3 % of largest Peak
 Max Peaks: 100
 Peak Location: TOP

If leading or trailing edge < 100 prefer < Baseline drop else tangent >
 Peak separation: 5

Method : Z:\VOASRV\HPCHEM1\MSVOA_U\METHOD\SOMUTR050819WMA.M
 Title : TRACE VOA SOM01.0

Signal : TIC

peak #	R.T. min	first scan	max scan	last scan	PK TY	peak height	corr. area	corr. % max.	% of total
1	1.395	87	95	106	rBV	239792	259090	11.44%	1.831%
2	1.682	176	184	198	rVB	222832	276305	12.20%	1.952%
3	2.270	357	367	382	rBV	381716	589348	26.02%	4.164%
4	4.209	955	970	1009	rBV2	256572	907903	40.09%	6.415%
5	4.643	1087	1105	1133	rBV	302369	723269	31.93%	5.110%
6	5.334	1298	1320	1343	rBV2	566394	1608593	71.02%	11.366%
7	5.884	1475	1491	1514	rBV	499064	1027084	45.35%	7.257%
8	6.328	1614	1629	1650	rBV	394060	801601	35.39%	5.664%
9	7.228	1894	1909	1929	rBV	163976	324952	14.35%	2.296%
10	7.562	2000	2013	2038	rBV	589596	1092668	48.24%	7.720%
11	7.849	2091	2102	2122	rBV2	98858	190363	8.41%	1.345%
12	8.312	2231	2246	2301	rBV	1108348	2264871	100.00%	16.003%
13	9.086	2474	2487	2524	rBV	766222	1382283	61.03%	9.767%
14	10.427	2892	2904	2935	rBV	328548	560953	24.77%	3.964%
15	11.482	3220	3232	3257	rBV	625679	1068243	47.17%	7.548%
16	11.858	3336	3349	3377	rBV	602821	1075421	47.48%	7.599%

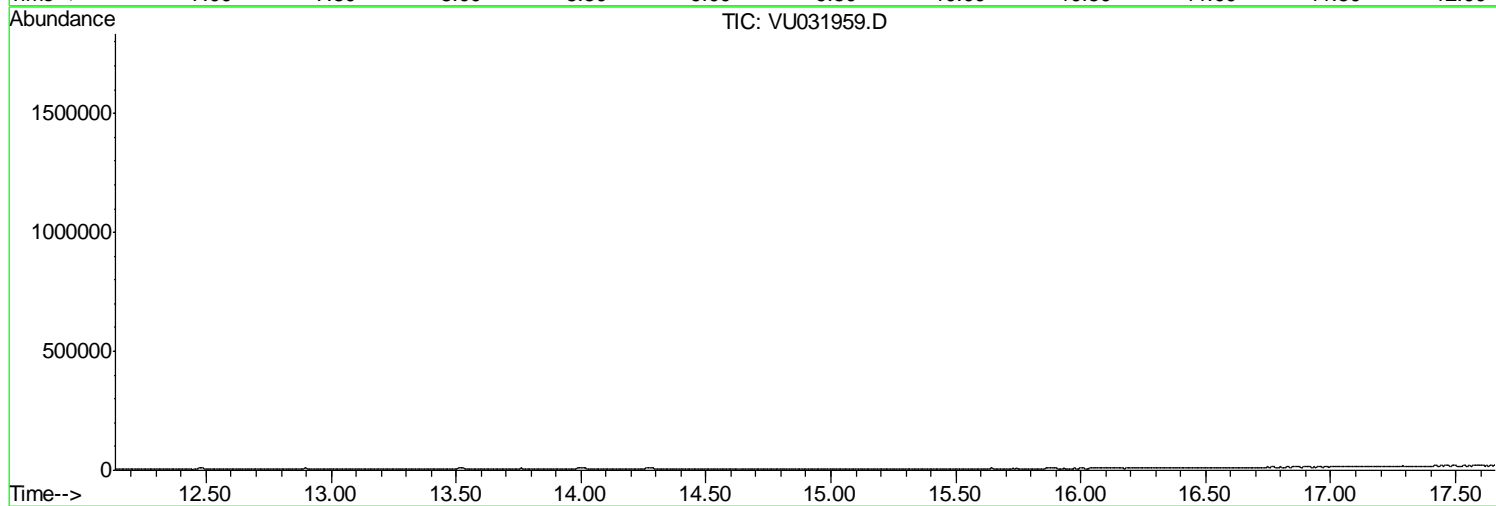
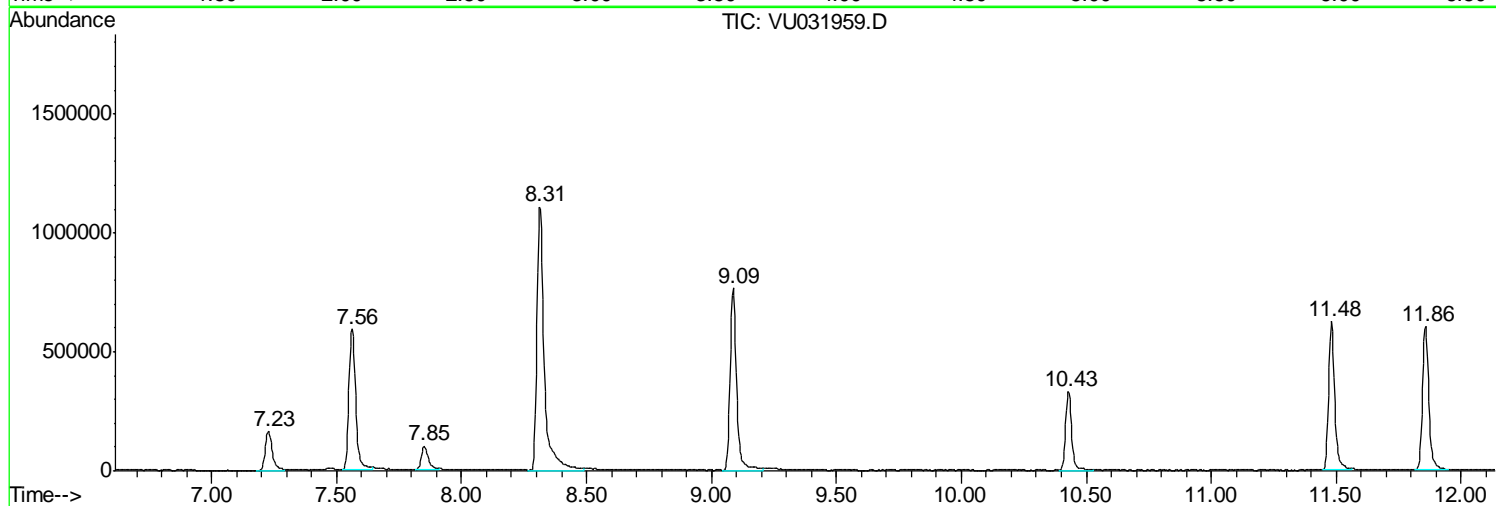
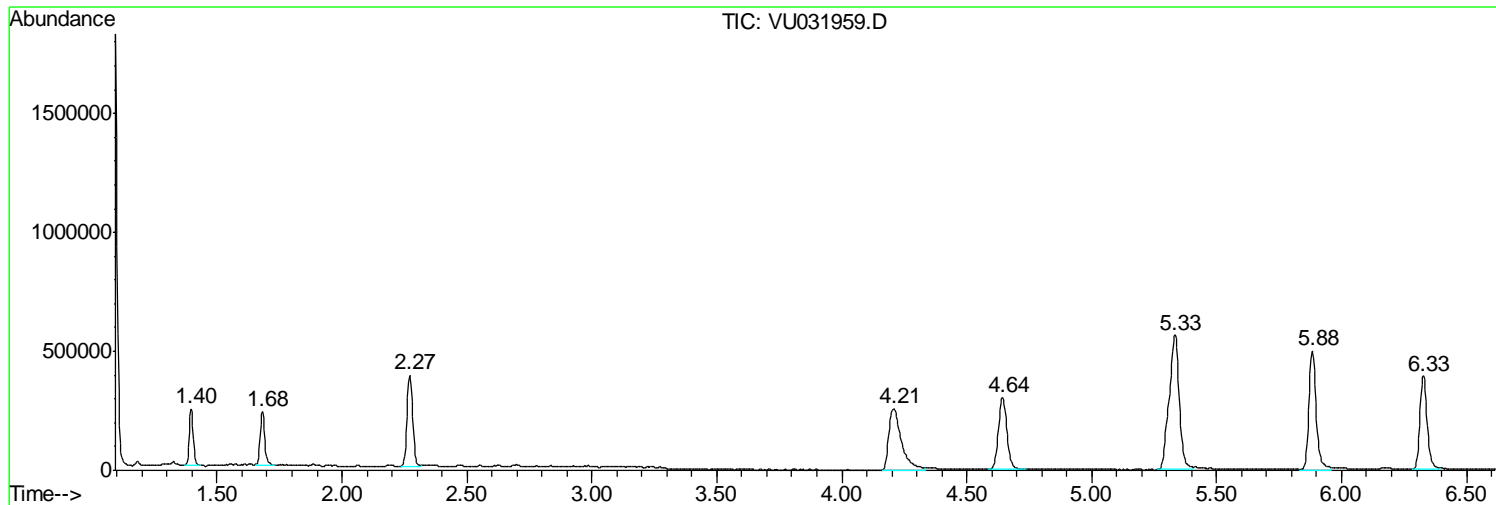
Sum of corrected areas: 14152947

Data Path : Z:\VOASRV\HPCHEM1\MSVOA U\DATA\VU051319\
Data File : VU031959.D
Acq On : 13 May 2019 09:55
Operator : JC/SP
Sample : VU0513WBL01
Misc : 25.0mL/MSVOA U/WATER
ALS Vial : 3 Sample Multiplier: 1

Instrument :
MSVOA_U
ClientSampled :
VBLK15

Quant Method : Z:\VOASRV\HPCHEM1\MSVOA_U\METHOD\SOMUTR050819WMA.M
Quant Title : TRACE VOA SOM01.0

TIC Library : C:\DATABASE\NIST11.L
TIC Integration Parameters: LSCINT.P



Data Path : Z:\VOASRV\HPCHEM1\MSVOA_U\DATA\VU051319\
Data File : VU031959.D
Acq On : 13 May 2019 09:55
Operator : JC/SP
Sample : VU0513WBL01
Misc : 25.0mL/MSVOA_U/WATER
ALS Vial : 3 Sample Multiplier: 1

Instrument :
MSVOA_U
ClientSampled :
VBLK15

Quant Method : Z:\VOASRV\HPCHEM1\MSVOA_U\METHOD\SOMUTR050819WMA.M
Quant Title : TRACE VOA SOM01.0

TIC Library : C:\DATABASE\NIST11.L
TIC Integration Parameters: LSCINT.P

No Library Search Compounds Detected

Data Path : Z:\VOASRV\HPCHEM1\MSVOA_U\DATA\VU051319\
Data File : VU031959.D
Acq On : 13 May 2019 09:55
Operator : JC/SP
Sample : VU0513WBL01
Misc : 25.0mL/MSVOA_U/WATER
ALS Vial : 3 Sample Multiplier: 1

Instrument :
MSVOA_U
ClientSampleId :
VBLK15

Quant Method : Z:\VOASRV\HPCHEM1\MSVOA_U\METHOD\SOMUTR050819WMA.M
Quant Title : TRACE VOA SOM01.0

TIC Library : C:\DATABASE\NIST11.L
TIC Integration Parameters: LSCINT.P

TIC Top Hit name	RT	EstConc	Units	Response	--Internal Standard--			
					#	RT	Resp	Conc
