

Data Path : Z:\VOASRV\HPCHEM1\MSVOA U\DATA\VU051319\
 Data File : VU031978.D
 Acq On : 13 May 2019 19:06
 Operator : JC/SP
 Sample : K2744-19
 Misc : 25.0mL/MSVOA U/WATER
 ALS Vial : 23 Sample Multiplier: 1

Instrument :
 MSVOA_U
 ClientSampled :
 F9D21

Integration Parameters: rteint.p
 Integrator: RTE
 Smoothing : ON Filtering: 5
 Sampling : 1 Min Area: 3 % of largest Peak
 Start Thrs: 0.1 Max Peaks: 100
 Stop Thrs : 0 Peak Location: TOP

If leading or trailing edge < 100 prefer < Baseline drop else tangent >
 Peak separation: 5

Method : Z:\VOASRV\HPCHEM1\MSVOA_U\METHOD\SOMUTR050819WMA.M
 Title : TRACE VOA SOM01.0

Signal : TIC

peak #	R.T. min	first scan	max scan	last scan	PK TY	peak height	corr. area	corr. % max.	% of total
1	1.399	89	96	106	rBV	170504	181356	8.85%	1.332%
2	1.675	174	182	198	rVB	157388	211257	10.31%	1.552%
3	2.270	357	367	378	rBV	309080	470273	22.94%	3.455%
4	2.444	412	421	442	rVB2	50347	100576	4.91%	0.739%
5	2.833	530	542	556	rBV2	67969	144686	7.06%	1.063%
6	4.186	946	963	997	rBV	310521	869410	42.42%	6.387%
7	4.643	1086	1105	1130	rBV2	266839	682265	33.29%	5.012%
8	4.987	1198	1212	1226	rVB7	15799	37397	1.82%	0.275%
9	5.334	1295	1320	1341	rBV2	517617	1478927	72.15%	10.865%
10	5.881	1477	1490	1520	rBV	574677	1171270	57.14%	8.605%
11	6.328	1610	1629	1652	rBV2	363202	743354	36.27%	5.461%
12	7.228	1896	1909	1929	rBV2	127280	245150	11.96%	1.801%
13	7.562	1999	2013	2047	rBV	551000	1030777	50.29%	7.573%
14	7.852	2092	2103	2121	rBV	77062	145489	7.10%	1.069%
15	8.225	2211	2219	2230	rVB4	14946	25085	1.22%	0.184%
16	8.312	2234	2246	2272	rBV	1083566	2049707	100.00%	15.059%
17	9.087	2474	2487	2516	rBV	854050	1498849	73.13%	11.012%
18	10.427	2891	2904	2923	rBV	308534	519994	25.37%	3.820%
19	11.482	3219	3232	3259	rBV	631047	1098371	53.59%	8.069%
20	11.858	3336	3349	3373	rBV	520850	907320	44.27%	6.666%

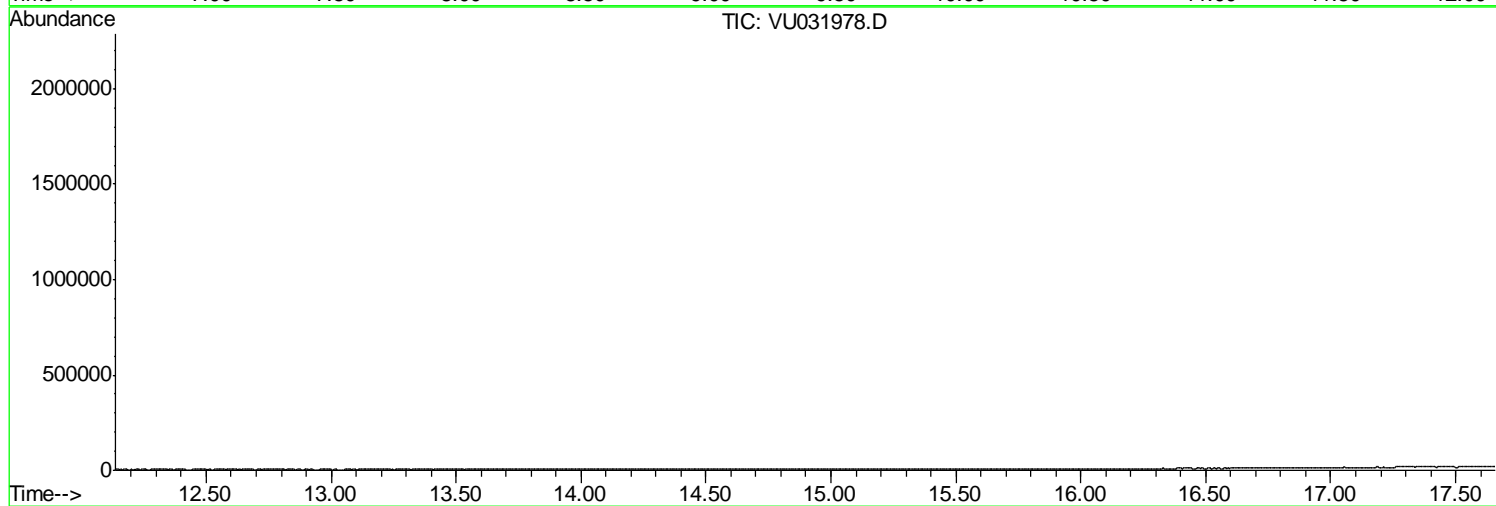
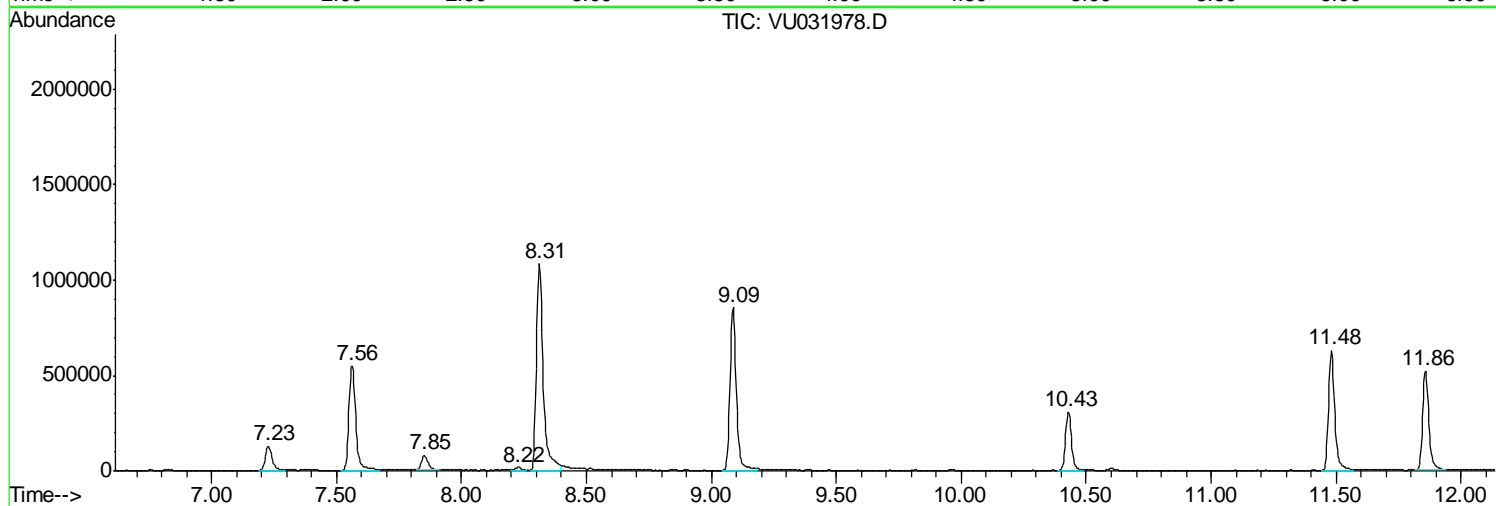
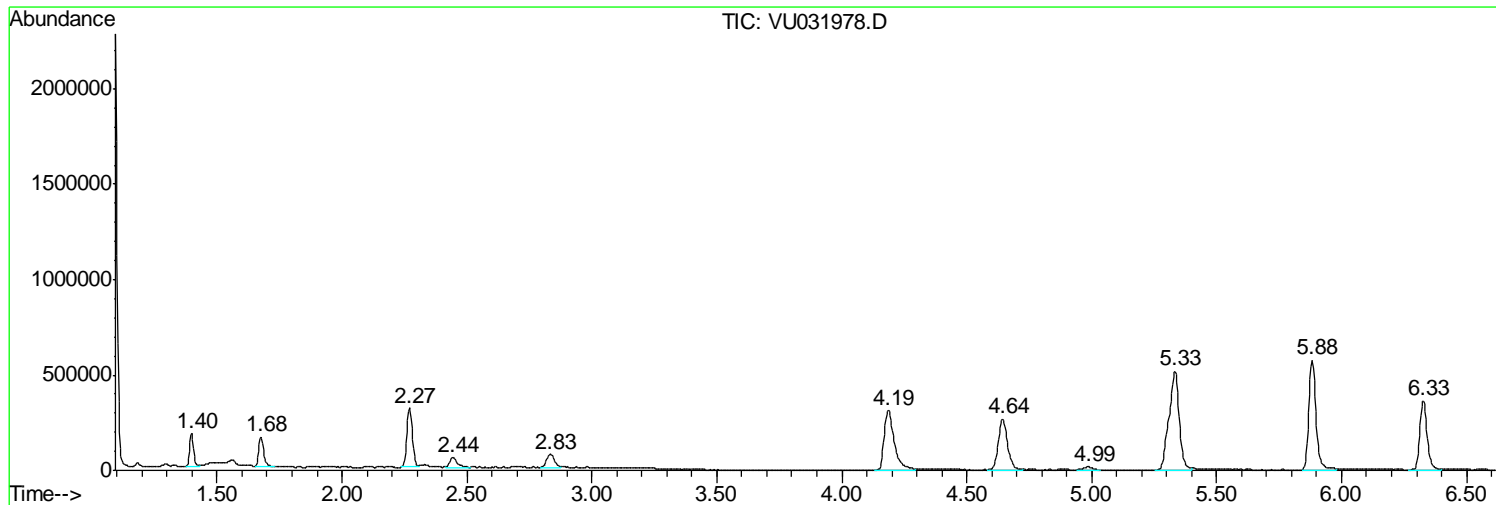
Sum of corrected areas: 13611513

Data Path : Z:\VOASRV\HPCHEM1\MSVOA U\DATA\VU051319\
Data File : VU031978.D
Acq On : 13 May 2019 19:06
Operator : JC/SP
Sample : K2744-19
Misc : 25.0mL/MSVOA U/WATER
ALS Vial : 23 Sample Multiplier: 1

Instrument :
MSVOA_U
ClientSampled :
F9D21

Quant Method : Z:\VOASRV\HPCHEM1\MSVOA_U\METHOD\SOMUTR050819WMA.M
Quant Title : TRACE VOA SOM01.0

TIC Library : C:\DATABASE\NIST11.L
TIC Integration Parameters: LSCINT.P



Data Path : Z:\VOASRV\HPCHEM1\MSVOA U\DATA\VU051319\
 Data File : VU031978.D
 Acq On : 13 May 2019 19:06
 Operator : JC/SP
 Sample : K2744-19
 Misc : 25.0mL/MSVOA U/WATER
 ALS Vial : 23 Sample Multiplier: 1

Instrument :
 MSVOA_U
 ClientSampleID :
 F9D21

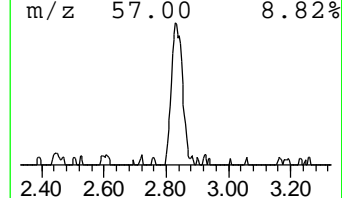
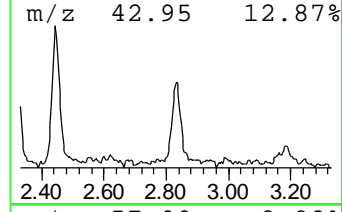
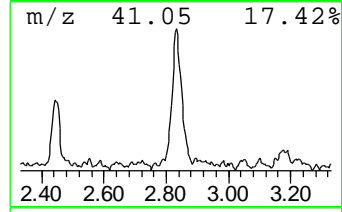
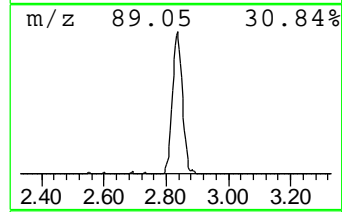
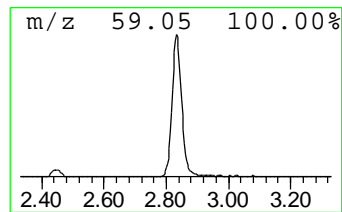
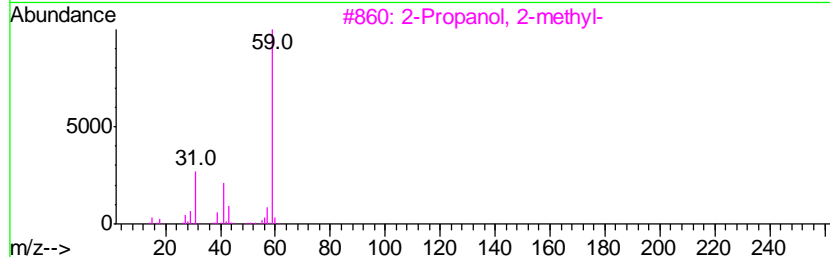
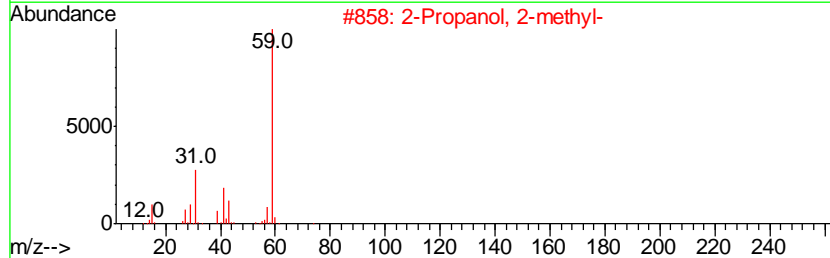
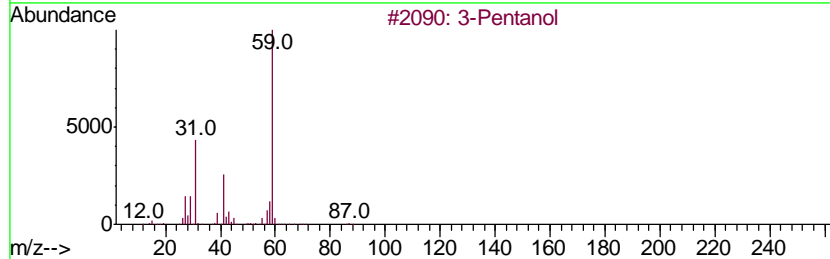
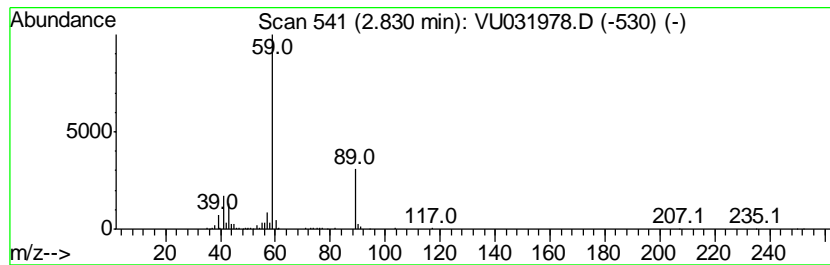
Quant Method : Z:\VOASRV\HPCHEM1\MSVOA_U\METHOD\SOMUTR050819WMA.M
 Quant Title : TRACE VOA SOM01.0

TIC Library : C:\DATABASE\NIST11.L
 TIC Integration Parameters: LSCINT.P

 Peak Number 1 3-Pentanol Concentration Rank 2

R.T.	EstConc	Area	Relative to ISTD	R.T.
2.83	0.62 ug/L	144686	1,4-Difluorobenzene	5.88

Hit#	of	Tentative ID	MW	MolForm	CAS#	Qual
1	5	3-Pentanol	88	C5H12O	000584-02-1	53
2		2-Propanol, 2-methyl-	74	C4H10O	000075-65-0	45
3		2-Propanol, 2-methyl-	74	C4H10O	000075-65-0	45
4		2-Propanol, 2-methyl-	74	C4H10O	000075-65-0	42
5		1,2-Butanediol	90	C4H10O2	000584-03-2	42



Data Path : Z:\VOASRV\HPCHEM1\MSVOA_U\DATA\VU051319\
Data File : VU031978.D
Acq On : 13 May 2019 19:06
Operator : JC/SP
Sample : K2744-19
Misc : 25.0mL/MSVOA_U/WATER
ALS Vial : 23 Sample Multiplier: 1

Instrument :
MSVOA_U
ClientSampleId :
F9D21

Quant Method : Z:\VOASRV\HPCHEM1\MSVOA_U\METHOD\SOMUTR050819WMA.M
Quant Title : TRACE VOA SOM01.0

TIC Library : C:\DATABASE\NIST11.L
TIC Integration Parameters: LSCINT.P

TIC Top Hit name	RT	EstConc	Units	Response	--Internal Standard--			
					#	RT	Resp	Conc
3-Pentanol	2.83	0.6	ug/L	144686	1	5.88	1171270	5.0