

Data Path : Z:\voasrv\HPCHEM1\MSVOA_U\Data\VU051321\
 Data File : VU043706.D
 Acq On : 13 May 2021 15:34
 Operator : SY/MD
 Sample : M2376-09
 Misc : 25.0mL/MSVOA_U/WATER
 ALS Vial : 14 Sample Multiplier: 1

Instrument :
 MSVOA_U
 ClientSampled :
 BG1Z1

Quant Time: May 14 01:50:12 2021
 Quant Method : Z:\voasrv\HPCHEM1\MSVOA_U\Method\SFAMUTR050321WMA.M
 Quant Title : TRACE VOA SFAM1.0
 QLast Update : Fri May 14 01:48:16 2021
 Response via : Initial Calibration

Compound	R.T.	QIon	Response	Conc	Units	Dev(Min)

Internal Standards						
1) 1,4-Difluorobenzene	6.256	114	91195	5.00	ug/L	0.00
28) Chlorobenzene-d5	9.423	117	91210	5.00	ug/L	0.00
58) 1,4-Dichlorobenzene-d4	11.819	152	40239	5.00	ug/L	0.00
System Monitoring Compounds						
4) Vinyl Chloride-d3	1.604	65	23688	3.23	ug/L	0.00
Spiked Amount	5.000	Range 40 - 130	Recovery	=	64.60%	
7) Chloroethane-d5	1.919	69	21701	4.04	ug/L	0.00
Spiked Amount	5.000	Range 65 - 130	Recovery	=	80.80%	
11) 1,1-Dichloroethene-d2	2.575	65	12273	3.41	ug/L	0.00
Spiked Amount	5.000	Range 60 - 125	Recovery	=	68.20%	
20) 2-Butanone-d5	4.639	46	150807	66.24	ug/L	0.00
Spiked Amount	50.000	Range 40 - 130	Recovery	=	132.48%#	
24) Chloroform-d	5.073	84	62774	4.47	ug/L	0.00
Spiked Amount	5.000	Range 70 - 125	Recovery	=	89.40%	
26) 1,2-Dichloroethane-d4	5.713	65	39901	4.72	ug/L	0.00
Spiked Amount	5.000	Range 70 - 130	Recovery	=	94.40%	
32) Benzene-d6	5.735	84	107112	4.34	ug/L	0.00
Spiked Amount	5.000	Range 70 - 125	Recovery	=	86.80%	
36) 1,2-Dichloropropane-d6	6.700	67	41874	4.84	ug/L	0.00
Spiked Amount	5.000	Range 60 - 140	Recovery	=	96.80%	
41) Toluene-d8	7.906	98	84863	3.74	ug/L	0.00
Spiked Amount	5.000	Range 70 - 130	Recovery	=	74.80%	
43) trans-1,3-Dichloroprop...	8.185	79	14835	4.25	ug/L	0.00
Spiked Amount	5.000	Range 55 - 130	Recovery	=	85.00%	
46) 2-Hexanone-d5	8.642	63	98755	67.46	ug/L	0.00
Spiked Amount	50.000	Range 45 - 130	Recovery	=	134.92%#	
56) 1,1,2,2-Tetrachloroeth...	10.761	84	36413	5.25	ug/L	0.00
Spiked Amount	5.000	Range 65 - 120	Recovery	=	105.00%	
66) 1,2-Dichlorobenzene-d4	12.201	152	34121	4.75	ug/L	0.00
Spiked Amount	5.000	Range 80 - 120	Recovery	=	95.00%	

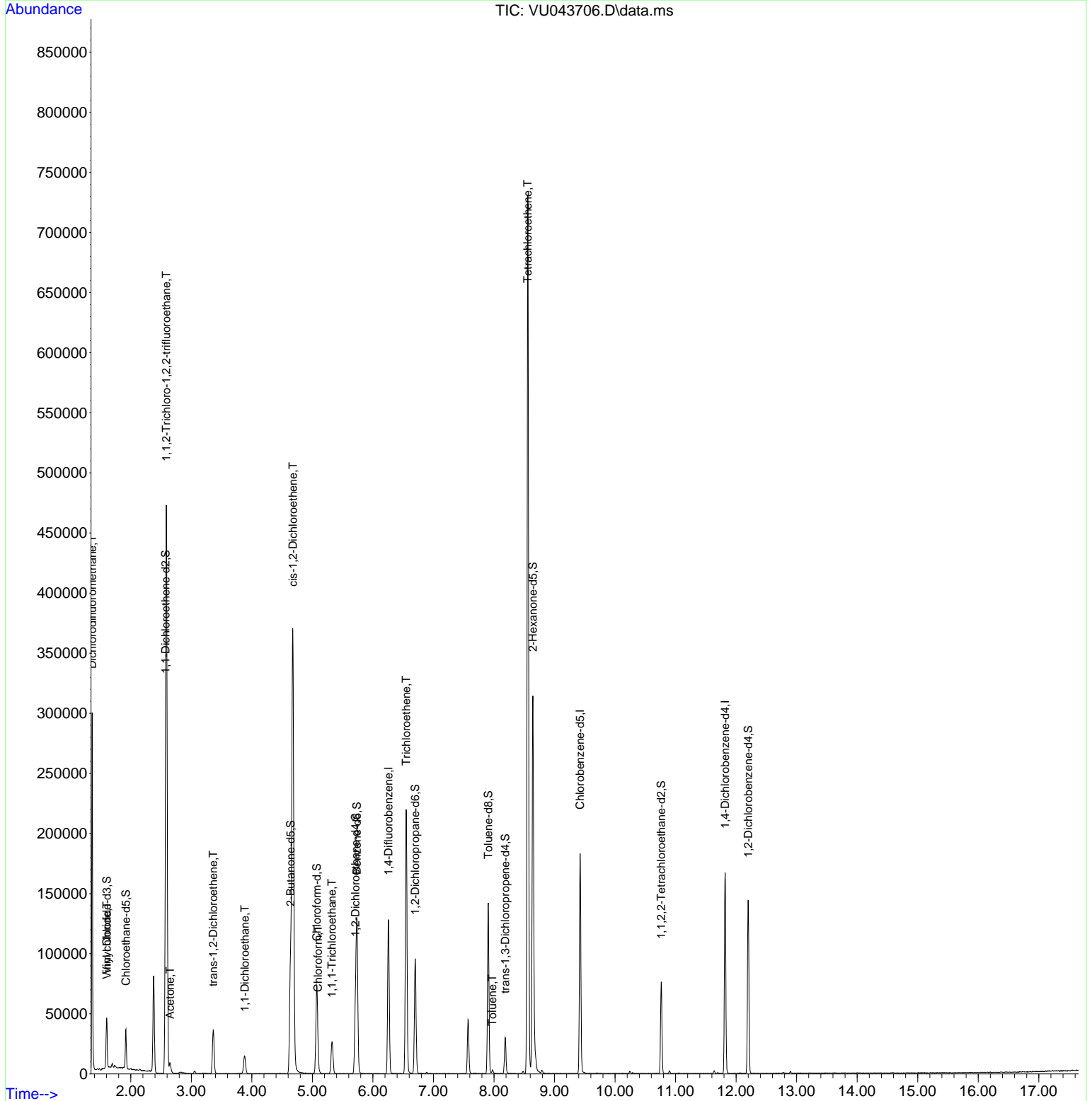
Target Compounds						Qvalue
2) Dichlorodifluoromethane	1.362	85	25720	4.17	ug/L	100
5) Vinyl chloride	1.607	62	3071	0.50	ug/L #	25
10) 1,1,2-Trichloro-1,2,2-...	2.587	101	172389	29.04	ug/L	99
13) Acetone	2.649	43	11860	7.81	ug/L	94
18) trans-1,2-Dichloroethene	3.362	96	13602	2.56	ug/L	99
19) 1,1-Dichloroethane	3.883	63	17435	1.38	ug/L	99
22) cis-1,2-Dichloroethene	4.677	96	168479	26.97	ug/L	98
25) Chloroform	5.092	83	1917	0.14	ug/L #	69
29) 1,1,1-Trichloroethane	5.324	97	18440	1.72	ug/L	97
34) Trichloroethene	6.549	95	74144	12.09	ug/L	95
42) Toluene	7.973	91	1990	0.08	ug/L	82
47) Tetrachloroethene	8.558	164	147661	32.67	ug/L	97

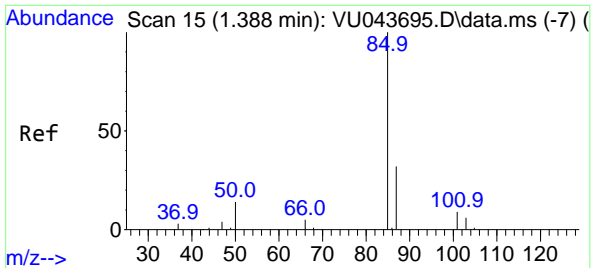
(#) = qualifier out of range (m) = manual integration (+) = signals summed

Data Path : Z:\voasrv\HPCHEM1\MSVOA_U\Data\VU051321\
 Data File : VU043706.D
 Acq On : 13 May 2021 15:34
 Operator : SY/MD
 Sample : M2376-09
 Misc : 25.0mL/MSVOA_U/WATER
 ALS Vial : 14 Sample Multiplier: 1

Instrument :
 MSVOA_U
 ClientSampleId :
 BG1Z1

Quant Time: May 14 01:50:12 2021
 Quant Method : Z:\voasrv\HPCHEM1\MSVOA_U\Method\SFAMUTR050321WMA.M
 Quant Title : TRACE VOA SFAM1.0
 QLast Update : Fri May 14 01:48:16 2021
 Response via : Initial Calibration

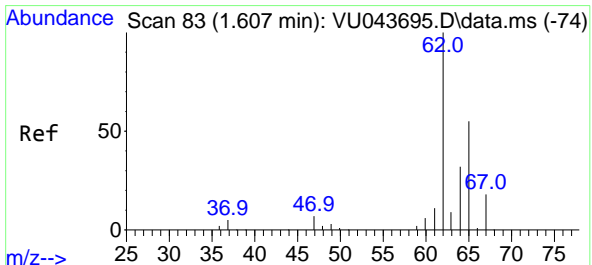
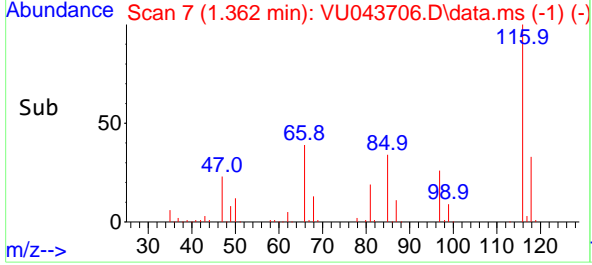
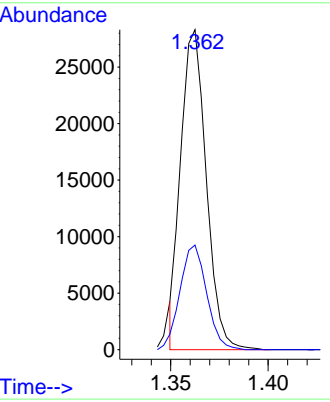
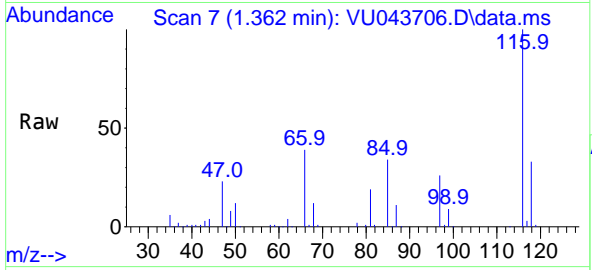




#2
 Dichlorodifluoromethane
 Concen: 4.17 ug/L
 RT: 1.362 min Scan# 7
 Delta R.T. -0.026 min
 Lab File: VU043706.D
 Acq: 13 May 2021 15:34

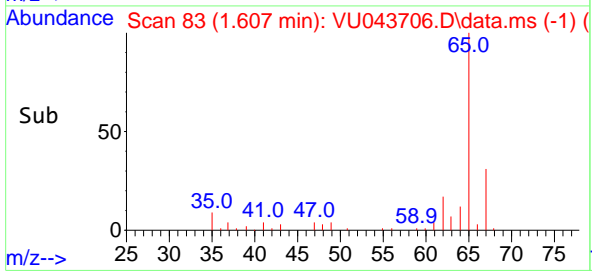
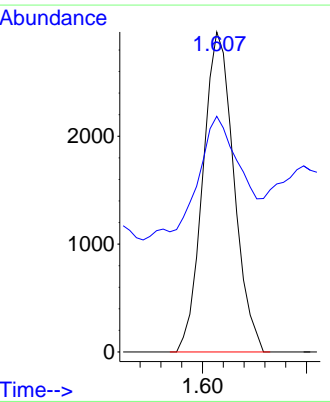
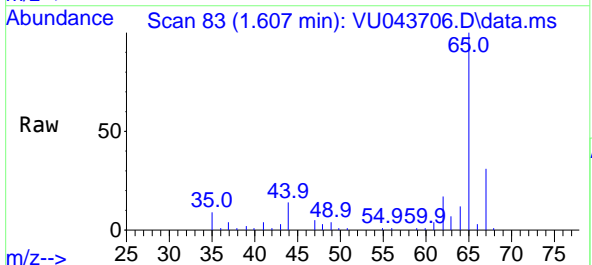
Instrument :
 MSVOA_U
 ClientSampled :
 BG1Z1

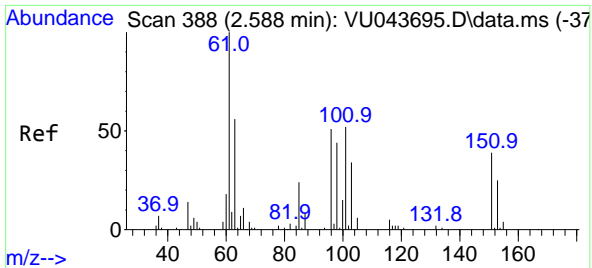
Tgt Ion: 85 Resp: 25720
 Ion Ratio Lower Upper
 85 100
 87 32.9 26.6 39.8



#5
 Vinyl chloride
 Concen: 0.50 ug/L
 RT: 1.607 min Scan# 83
 Delta R.T. -0.000 min
 Lab File: VU043706.D
 Acq: 13 May 2021 15:34

Tgt Ion: 62 Resp: 3071
 Ion Ratio Lower Upper
 62 100
 64 73.6 22.3 41.3#



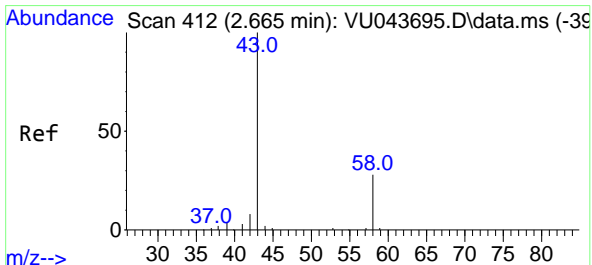
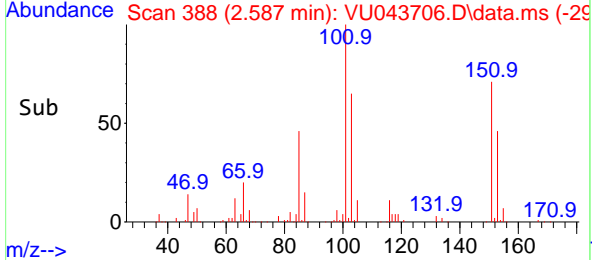
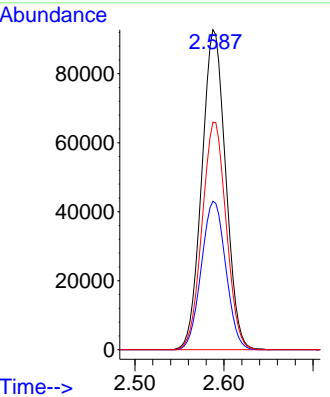
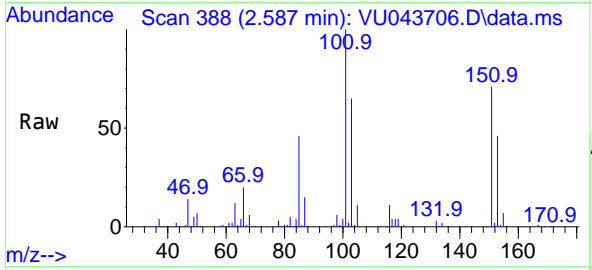


#10
 1,1,2-Trichloro-1,2,2-trifluoroethane
 Concen: 29.04 ug/L
 RT: 2.587 min Scan# 388
 Delta R.T. -0.000 min
 Lab File: VU043706.D
 Acq: 13 May 2021 15:34

Instrument :
 MSVOA_U
 ClientSampled :
 BG1Z1

Tgt Ion:101 Resp: 172389

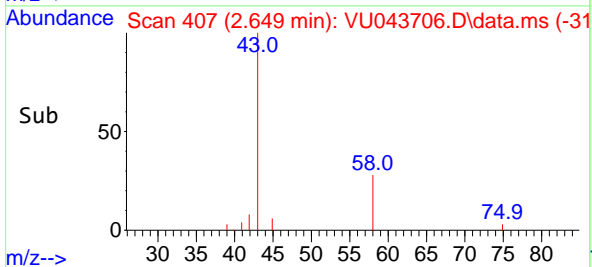
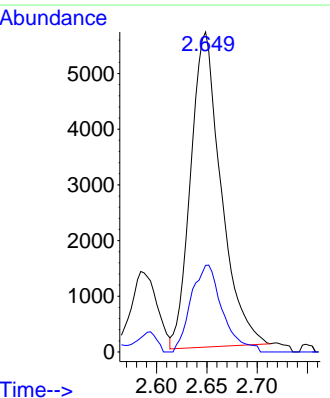
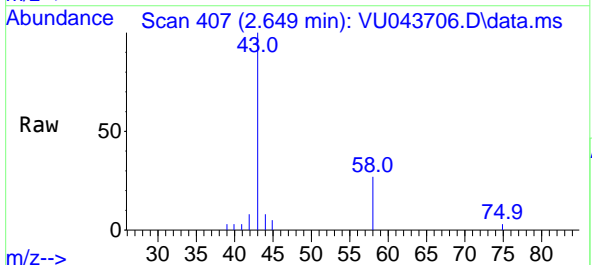
Ion	Ratio	Lower	Upper
101	100		
85	47.6	38.5	57.7
151	71.9	58.5	87.7

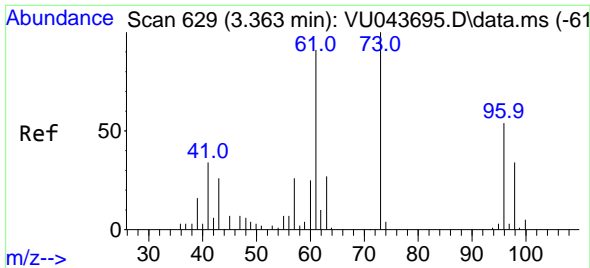


#13
 Acetone
 Concen: 7.81 ug/L
 RT: 2.649 min Scan# 407
 Delta R.T. -0.016 min
 Lab File: VU043706.D
 Acq: 13 May 2021 15:34

Tgt Ion: 43 Resp: 11860

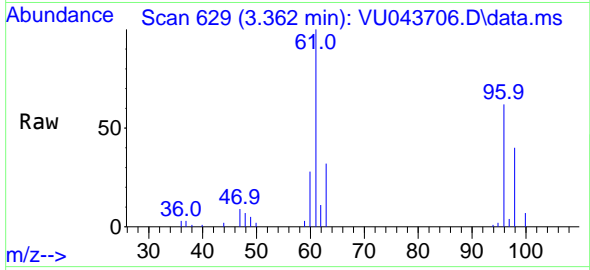
Ion	Ratio	Lower	Upper
43	100		
58	28.5	0.0	50.8



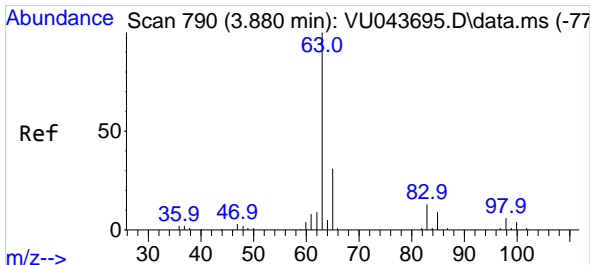
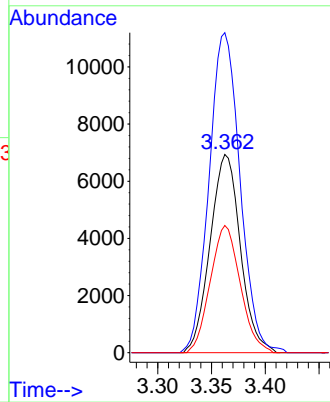
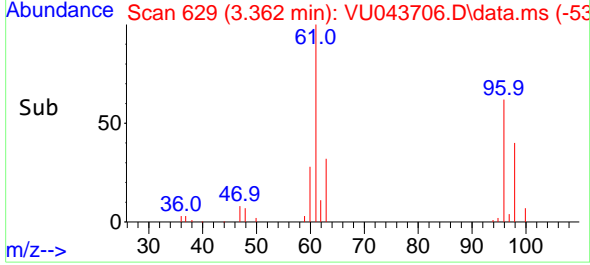


#18
 trans-1,2-Dichloroethene
 Concen: 2.56 ug/L
 RT: 3.362 min Scan# 629
 Delta R.T. -0.000 min
 Lab File: VU043706.D
 Acq: 13 May 2021 15:34

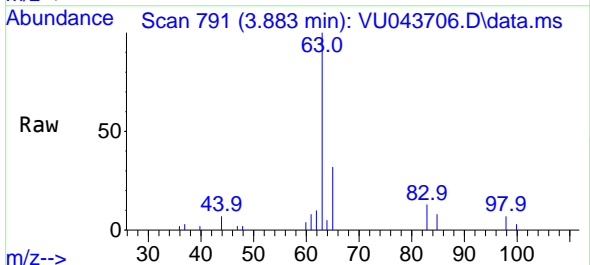
Instrument : MSVOA_U
 ClientSampled : BG1Z1



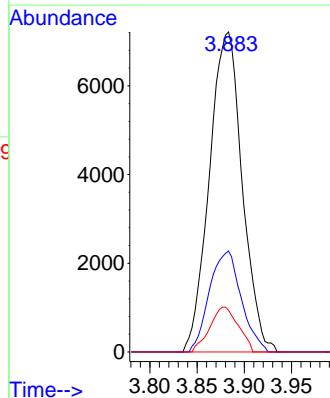
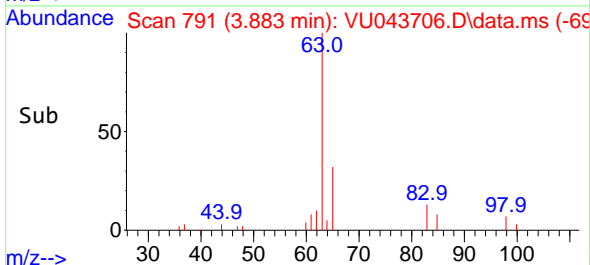
Tgt Ion: 96 Resp: 13602
 Ion Ratio Lower Upper
 96 100
 61 161.4 113.5 210.9
 98 64.1 45.4 84.2

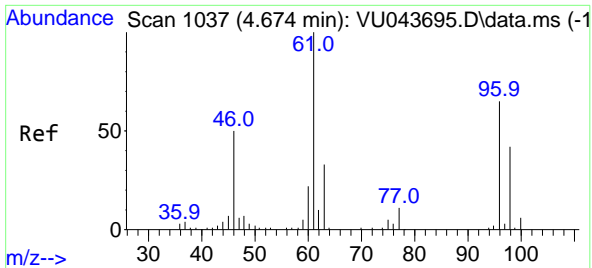


#19
 1,1-Dichloroethane
 Concen: 1.38 ug/L
 RT: 3.883 min Scan# 791
 Delta R.T. 0.003 min
 Lab File: VU043706.D
 Acq: 13 May 2021 15:34



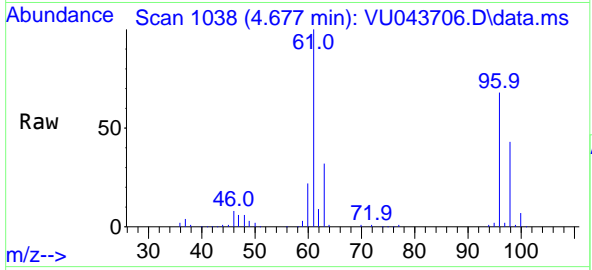
Tgt Ion: 63 Resp: 17435
 Ion Ratio Lower Upper
 63 100
 65 31.5 22.7 42.1
 83 13.1 9.4 17.4



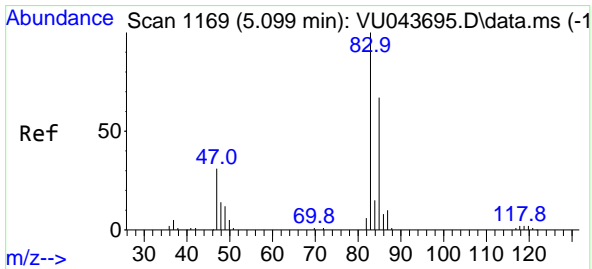
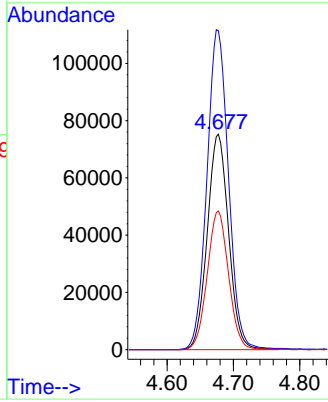
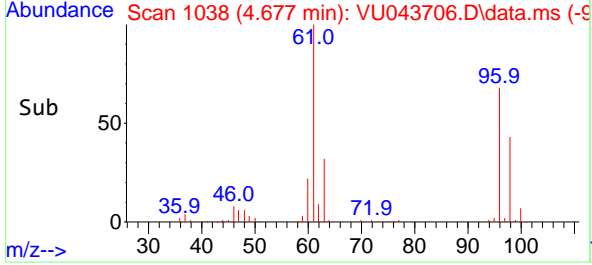


#22
 cis-1,2-Dichloroethene
 Concen: 26.97 ug/L
 RT: 4.677 min Scan# 1038
 Delta R.T. 0.003 min
 Lab File: VU043706.D
 Acq: 13 May 2021 15:34

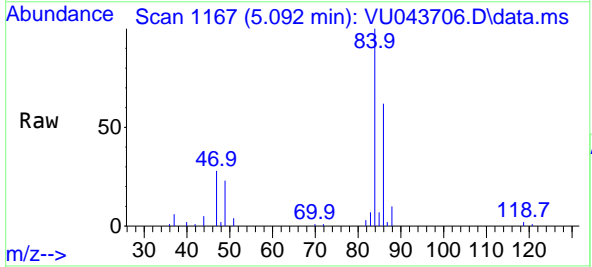
Instrument :
 MSVOA_U
 ClientSampled :
 BG1Z1



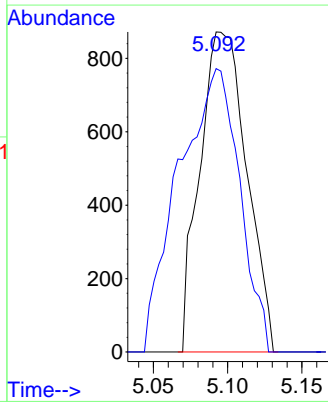
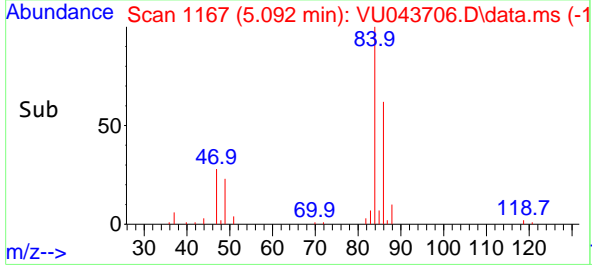
Tgt Ion: 96 Resp: 168479
 Ion Ratio Lower Upper
 96 100
 61 148.0 102.8 190.8
 98 64.3 42.8 79.6

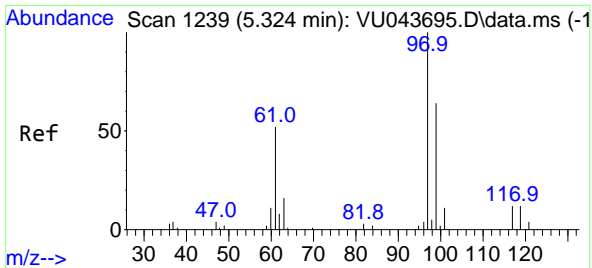


#25
 Chloroform
 Concen: 0.14 ug/L
 RT: 5.092 min Scan# 1167
 Delta R.T. -0.007 min
 Lab File: VU043706.D
 Acq: 13 May 2021 15:34



Tgt Ion: 83 Resp: 1917
 Ion Ratio Lower Upper
 83 100
 85 88.5 45.1 83.9#

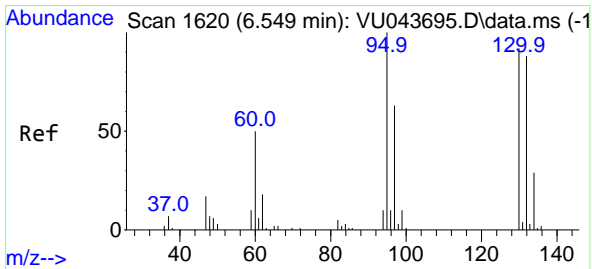
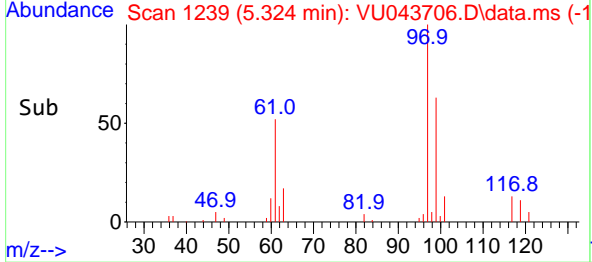
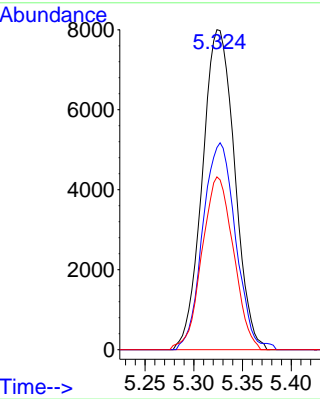
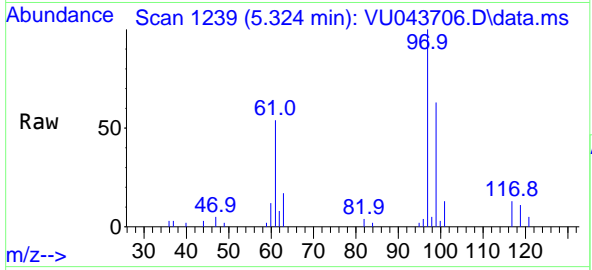




#29
 1,1,1-Trichloroethane
 Concen: 1.72 ug/L
 RT: 5.324 min Scan# 1239
 Delta R.T. -0.000 min
 Lab File: VU043706.D
 Acq: 13 May 2021 15:34

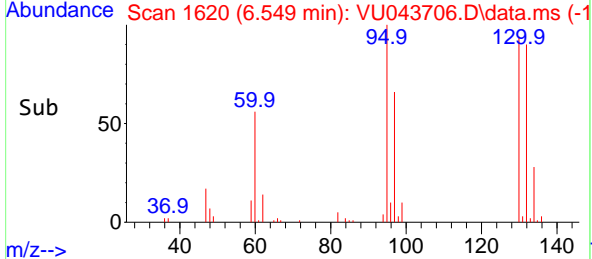
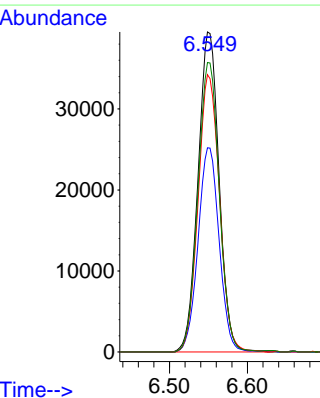
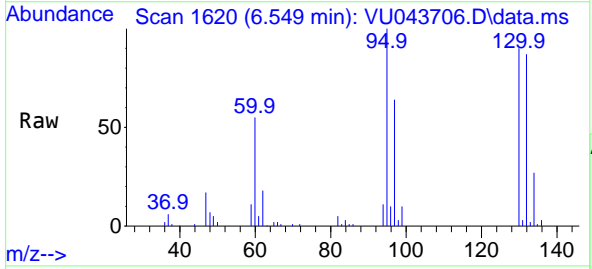
Instrument : MSVOA_U
 ClientSampled : BG1Z1

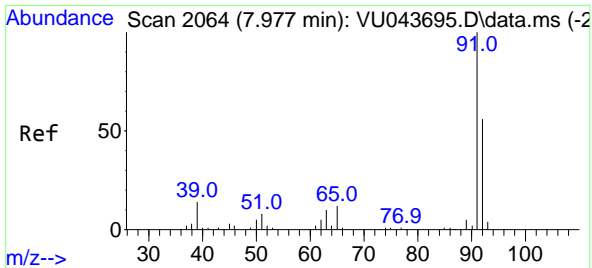
Tgt Ion	Resp	Lower	Upper
97	18440		
97	100		
99	65.8	51.8	77.6
61	52.7	39.8	59.8



#34
 Trichloroethene
 Concen: 12.09 ug/L
 RT: 6.549 min Scan# 1620
 Delta R.T. -0.000 min
 Lab File: VU043706.D
 Acq: 13 May 2021 15:34

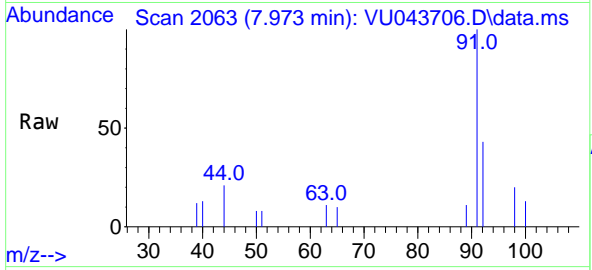
Tgt Ion	Resp	Lower	Upper
95	74144		
95	100		
97	63.8	46.5	86.5
132	86.6	64.1	119.1
130	90.5	67.3	125.1



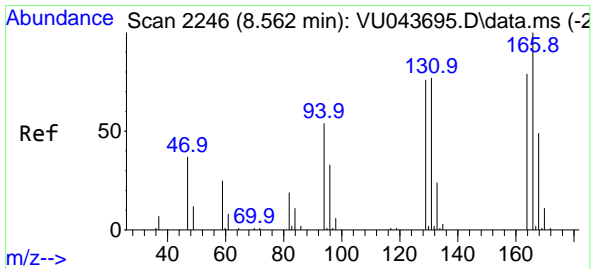
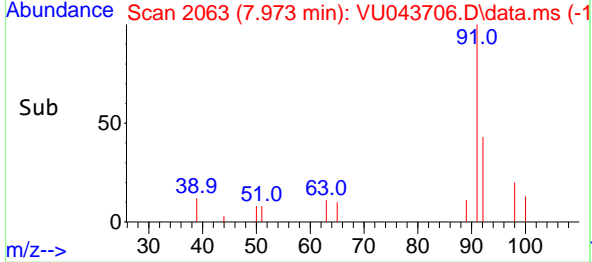
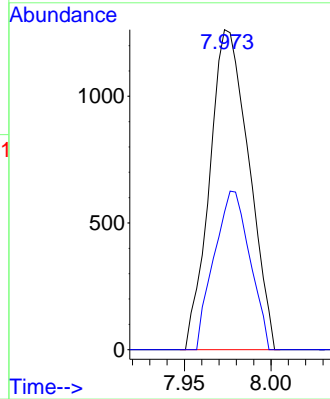


#42
 Toluene
 Concen: 0.08 ug/L
 RT: 7.973 min Scan# 2063
 Delta R.T. -0.003 min
 Lab File: VU043706.D
 Acq: 13 May 2021 15:34

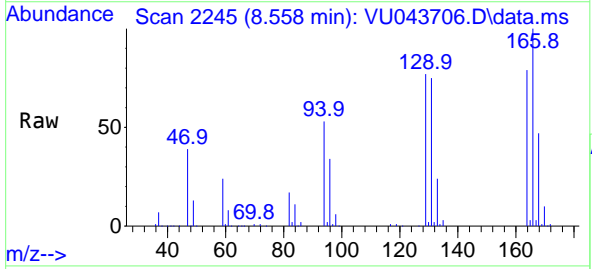
Instrument :
 MSVOA_U
 ClientSampled :
 BG1Z1



Tgt Ion: 91 Resp: 1990
 Ion Ratio Lower Upper
 91 100
 92 43.0 39.1 72.5



#47
 Tetrachloroethene
 Concen: 32.67 ug/L
 RT: 8.558 min Scan# 2245
 Delta R.T. -0.003 min
 Lab File: VU043706.D
 Acq: 13 May 2021 15:34



Tgt Ion: 164 Resp: 147661
 Ion Ratio Lower Upper
 164 100
 129 97.2 62.5 116.1
 131 94.6 64.9 120.5
 166 126.8 89.0 165.2

