

Data Path : Z:\voasrv\HPCHEM1\MSVOA_U\Data\VU051322\
 Data File : VU048554.D
 Acq On : 13 May 2022 10:03
 Operator : SY/MD
 Sample : VSTDCCC050
 Misc : 5.0mL/MSVOA_U/WATER
 ALS Vial : 2 Sample Multiplier: 1

Instrument :
 MSVOA_U
 ClientSampleId :
 VSTD050126

Quant Time: May 14 04:11:44 2022
 Quant Method : Z:\voasrv\HPCHEM1\MSVOA_U\Method\SFAMULM050622WMA.M
 Quant Title : VOC Analysis
 QLast Update : Fri May 13 03:54:05 2022
 Response via : Initial Calibration

Compound	R.T.	QIon	Response	Conc	Units	Dev(Min)
Internal Standards						
1) 1,4-Difluorobenzene	6.250	114	257193	50.000	ug/L	0.00
28) Chlorobenzene-d5	9.420	117	257498	50.000	ug/L	0.00
58) 1,4-Dichlorobenzene-d4	11.812	152	156636	50.000	ug/L	0.00
System Monitoring Compounds						
4) Vinyl Chloride-d3	1.600	65	75594	34.128	ug/L	0.00
Spiked Amount	50.000	Range 60 - 135	Recovery	=	68.260%	
7) Chloroethane-d5	1.912	69	60390	41.775	ug/L	0.00
Spiked Amount	50.000	Range 70 - 130	Recovery	=	83.560%	
11) 1,1-Dichloroethene-d2	2.571	63	174750	44.329	ug/L	0.00
Spiked Amount	50.000	Range 60 - 125	Recovery	=	88.660%	
21) 2-Butanone-d5	4.620	46	167897	89.005	ug/L	0.00
Spiked Amount	100.000	Range 40 - 130	Recovery	=	89.010%	
24) Chloroform-d	5.067	84	208778	54.266	ug/L	0.00
Spiked Amount	50.000	Range 70 - 125	Recovery	=	108.540%	
26) 1,2-Dichloroethane-d4	5.703	65	143214	57.265	ug/L	0.00
Spiked Amount	50.000	Range 70 - 125	Recovery	=	114.540%	
32) Benzene-d6	5.729	84	366142	46.792	ug/L	0.00
Spiked Amount	50.000	Range 70 - 125	Recovery	=	93.580%	
36) 1,2-Dichloropropane-d6	6.694	67	112565	44.114	ug/L	0.00
Spiked Amount	50.000	Range 70 - 120	Recovery	=	88.220%	
41) Toluene-d8	7.899	98	347091	50.155	ug/L	0.00
Spiked Amount	50.000	Range 80 - 120	Recovery	=	100.300%	
43) trans-1,3-Dichloroprop...	8.179	79	64621	55.023	ug/L	0.00
Spiked Amount	50.000	Range 60 - 125	Recovery	=	110.040%	
47) 2-Hexanone-d5	8.632	63	121552	98.421	ug/L	0.00
Spiked Amount	100.000	Range 45 - 130	Recovery	=	98.420%	
56) 1,1,2,2-Tetrachloroeth...	10.758	84	187633	48.275	ug/L	0.00
Spiked Amount	50.000	Range 65 - 120	Recovery	=	96.540%	
66) 1,2-Dichlorobenzene-d4	12.195	152	153039	49.341	ug/L	0.00
Spiked Amount	50.000	Range 80 - 120	Recovery	=	98.680%	
Target Compounds						
2) Dichlorodifluoromethane	1.385	85	118106	50.764	ug/L	99
3) Chloromethane	1.523	50	91146	34.250	ug/L	98
5) Vinyl chloride	1.607	62	97132	38.421	ug/L	99
6) Bromomethane	1.851	94	68036	54.419	ug/L	97
8) Chloroethane	1.932	64	60644	44.617	ug/L	100
9) Trichlorofluoromethane	2.141	101	188269	56.680	ug/L	99
10) 1,1,2-Trichloro-1,2,2-...	2.581	101	101114	53.047	ug/L	97
12) 1,1-Dichloroethene	2.581	96	87189	48.380	ug/L	98
13) Acetone	2.623	43	154528	108.657	ug/L	95
14) Carbon disulfide	2.797	76	243993	43.680	ug/L	100
15) Methyl Acetate	2.948	43	116832	40.101	ug/L	92
16) Methylene chloride	3.047	84	104364	47.355	ug/L	88
17) trans-1,2-Dichloroethene	3.356	96	95212	49.520	ug/L	97
18) Methyl tert-butyl Ether	3.362	73	326444	50.416	ug/L	97
19) 1,1-Dichloroethane	3.874	63	188215	47.474	ug/L	98
20) cis-1,2-Dichloroethene	4.668	96	107544	49.567	ug/L	94
22) 2-Butanone	4.700	43	184552	86.810	ug/L	95
23) Bromochloromethane	4.973	128	58723	51.357	ug/L	85
25) Chloroform	5.089	83	209416	53.492	ug/L	99

Data Path : Z:\voasrv\HPCHEM1\MSVOA_U\Data\VU051322\
 Data File : VU048554.D
 Acq On : 13 May 2022 10:03
 Operator : SY/MD
 Sample : VSTDCCC050
 Misc : 5.0mL/MSVOA_U/WATER
 ALS Vial : 2 Sample Multiplier: 1

Instrument :
 MSVOA_U
 ClientSampleId :
 VSTD050126

Quant Time: May 14 04:11:44 2022
 Quant Method : Z:\voasrv\HPCHEM1\MSVOA_U\Method\SFAMULM050622WMA.M
 Quant Title : VOC Analysis
 QLast Update : Fri May 13 03:54:05 2022
 Response via : Initial Calibration

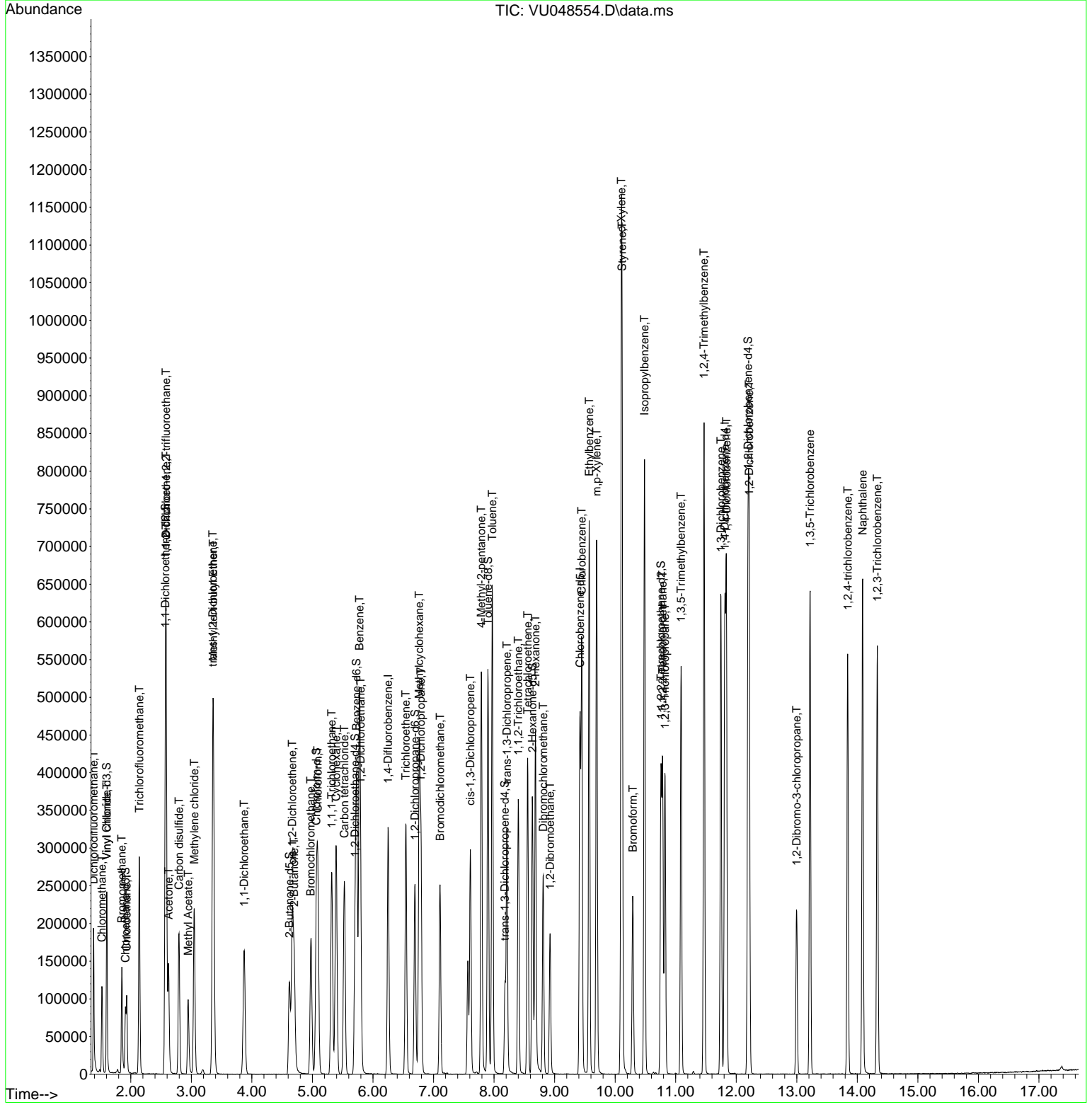
Compound	R.T.	QIon	Response	Conc	Units	Dev(Min)
27) 1,2-Dichloroethane	5.796	62	180018	55.928	ug/L	100
29) Cyclohexane	5.391	56	143325	40.336	ug/L	88
30) 1,1,1-Trichloroethane	5.317	97	201359	56.308	ug/L	97
31) Carbon tetrachloride	5.530	117	184446	60.236	ug/L	100
33) Benzene	5.777	78	409069	46.139	ug/L	100
34) Trichloroethene	6.542	95	109899	50.427	ug/L	97
35) Methylcyclohexane	6.764	83	163097	46.905	ug/L	95
37) 1,2-Dichloropropane	6.793	63	104474	42.220	ug/L	98
38) Bromodichloromethane	7.108	83	160810	53.372	ug/L	100
39) cis-1,3-Dichloropropene	7.610	75	171017	48.589	ug/L	97
40) 4-Methyl-2-pentanone	7.790	43	317242	80.014	ug/L #	94
42) Toluene	7.970	91	455079	49.733	ug/L	96
44) trans-1,3-Dichloropropene	8.211	75	180008	52.628	ug/L	100
45) 1,1,2-Trichloroethane	8.401	97	110587	49.418	ug/L	97
46) Tetrachloroethene	8.555	164	90497	55.275	ug/L	97
48) 2-Hexanone	8.684	43	260769	79.141	ug/L #	96
49) Dibromochloromethane	8.812	129	137929	57.394	ug/L	100
50) 1,2-Dibromoethane	8.925	107	123134	52.054	ug/L	98
51) Chlorobenzene	9.449	112	297507	51.601	ug/L	97
52) Ethylbenzene	9.571	91	496254	52.062	ug/L	99
53) m,p-Xylene	9.693	106	200358	54.455	ug/L	100
54) o-Xylene	10.102	106	193562	52.291	ug/L	98
55) Styrene	10.115	104	344120	57.177	ug/L	99
57) 1,1,2,2-Tetrachloroethane	10.783	83	188383	44.916	ug/L #	99
59) Bromoform	10.291	173	109828	49.440	ug/L	99
60) 1,2,3-Trichloropropane	10.822	75	163794	40.060	ug/L	95
61) Isopropylbenzene	10.484	105	513926	46.823	ug/L	100
62) 1,3,5-Trimethylbenzene	11.089	105	292865	48.403	ug/L	99
63) 1,2,4-Trimethylbenzene	11.468	105	461885	51.259	ug/L	99
64) 1,3-Dichlorobenzene	11.748	146	255832	49.421	ug/L	99
65) 1,4-Dichlorobenzene	11.838	146	259790	50.056	ug/L	98
67) 1,2-Dichlorobenzene	12.214	146	256963	48.507	ug/L	97
68) 1,2-Dibromo-3-chloropr...	12.995	75	58442	48.767	ug/L	97
69) 1,3,5-Trichlorobenzene	13.221	180	197354	53.920	ug/L	99
70) 1,2,4-trichlorobenzene	13.841	180	172908	54.398	ug/L	99
71) Naphthalene	14.089	128	525936	42.967	ug/L	100
72) 1,2,3-Trichlorobenzene	14.330	180	173428	51.301	ug/L	99

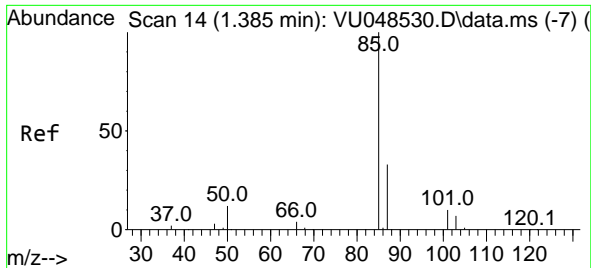
(#) = qualifier out of range (m) = manual integration (+) = signals summed

Data Path : Z:\voasrv\HPCHEM1\MSVOA_U\Data\VU051322\
 Data File : VU048554.D
 Acq On : 13 May 2022 10:03
 Operator : SY/MD
 Sample : VSTDCCC050
 Misc : 5.0mL/MSVOA_U/WATER
 ALS Vial : 2 Sample Multiplier: 1

Instrument :
 MSVOA_U
Client Sample Id :
 VSTD050126

Quant Time: May 14 04:11:44 2022
 Quant Method : Z:\voasrv\HPCHEM1\MSVOA_U\Method\SFAMULM050622WMA.M
 Quant Title : VOC Analysis
 QLast Update : Fri May 13 03:54:05 2022
 Response via : Initial Calibration

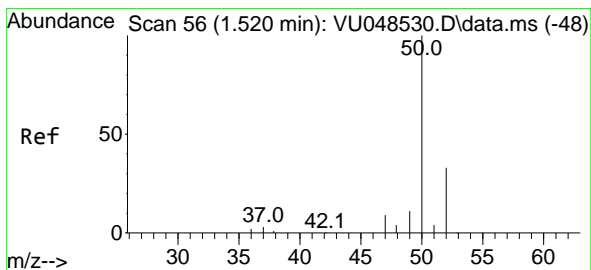
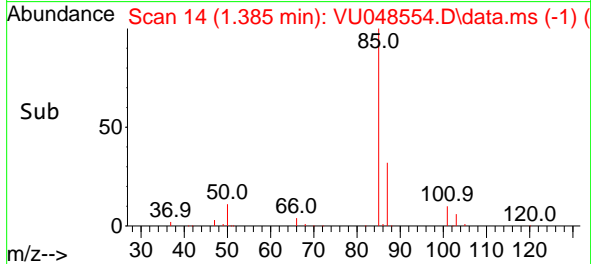
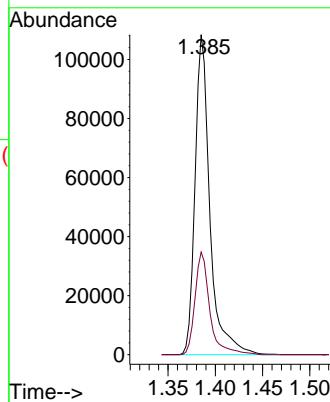
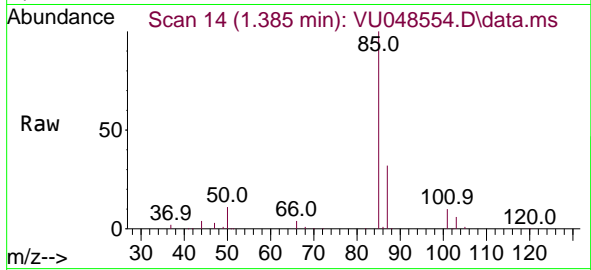




#2
 Dichlorodifluoromethane
 Concen: 50.764 ug/L
 RT: 1.385 min Scan# 14
 Delta R.T. 0.000 min
 Lab File: VU048554.D
 Acq: 13 May 2022 10:03

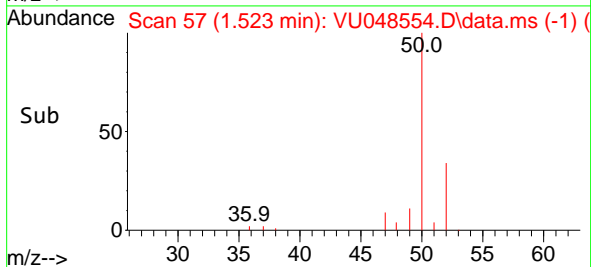
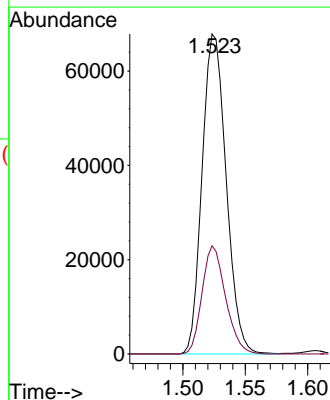
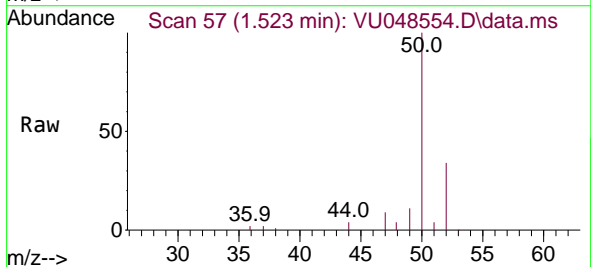
Instrument :
 MSVOA_U
 ClientSampleId :
 VSTD050126

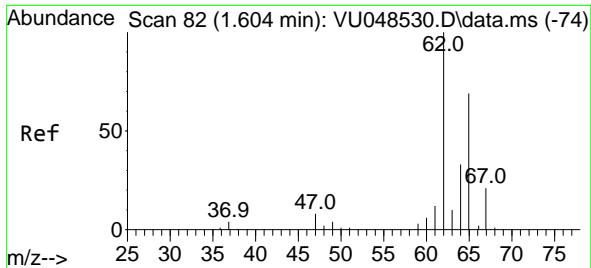
Tgt Ion: 85 Resp: 118106
 Ion Ratio Lower Upper
 85 100
 87 32.2 26.2 39.4



#3
 Chloromethane
 Concen: 34.250 ug/L
 RT: 1.523 min Scan# 57
 Delta R.T. 0.003 min
 Lab File: VU048554.D
 Acq: 13 May 2022 10:03

Tgt Ion: 50 Resp: 91146
 Ion Ratio Lower Upper
 50 100
 52 33.8 23.0 42.8

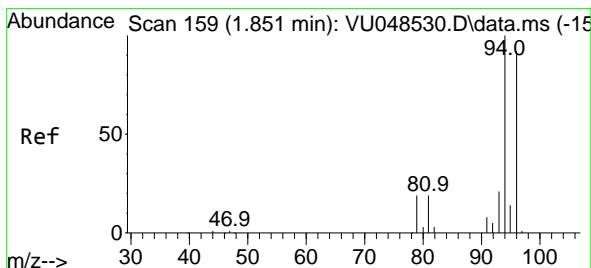
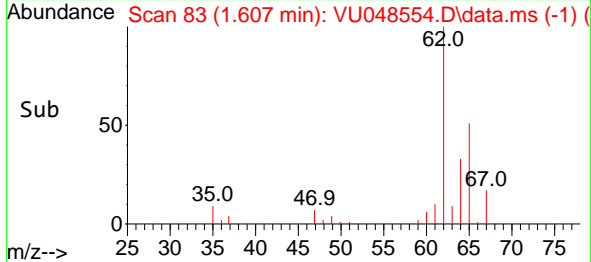
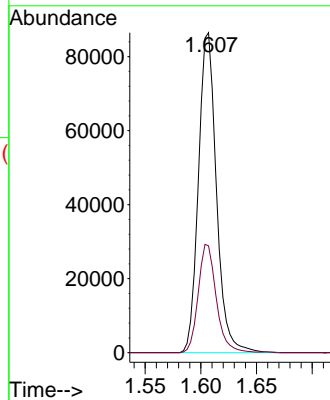
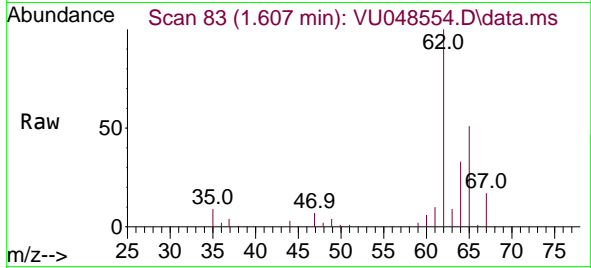




#5
 Vinyl chloride
 Concen: 38.421 ug/L
 RT: 1.607 min Scan# 81
 Delta R.T. 0.003 min
 Lab File: VU048554.D
 Acq: 13 May 2022 10:03

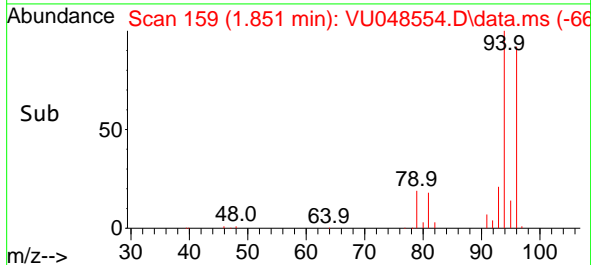
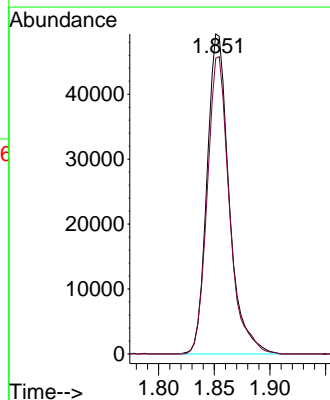
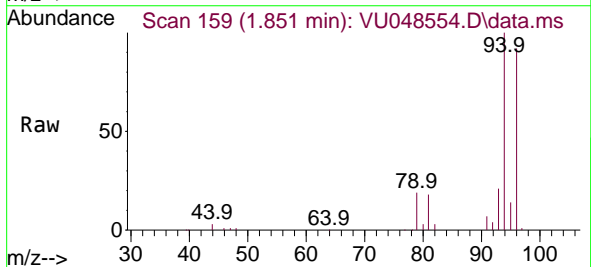
Instrument :
 MSVOA_U
 ClientSampleId :
 VSTD050126

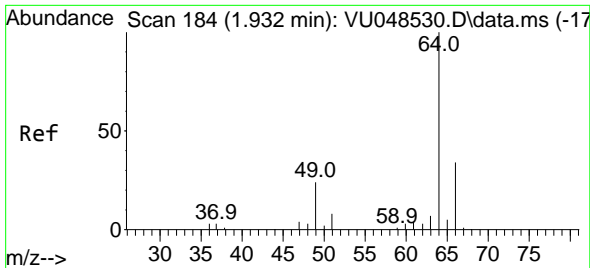
Tgt Ion: 62 Resp: 97132
 Ion Ratio Lower Upper
 62 100
 64 33.4 23.2 43.0



#6
 Bromomethane
 Concen: 54.419 ug/L
 RT: 1.851 min Scan# 159
 Delta R.T. 0.000 min
 Lab File: VU048554.D
 Acq: 13 May 2022 10:03

Tgt Ion: 94 Resp: 68036
 Ion Ratio Lower Upper
 94 100
 96 92.4 66.5 123.5

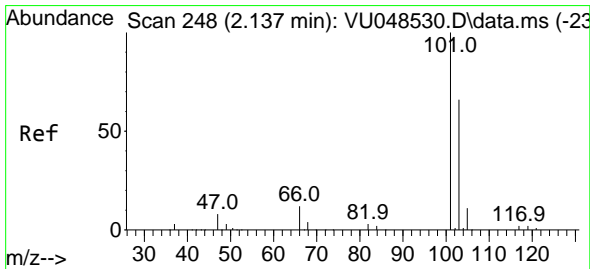
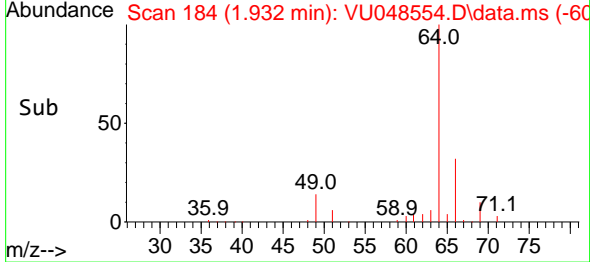
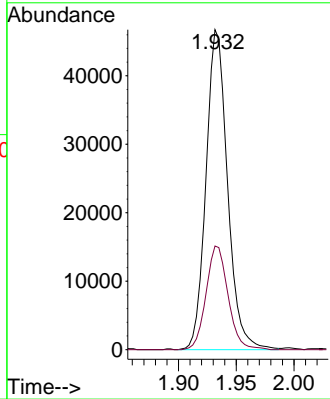
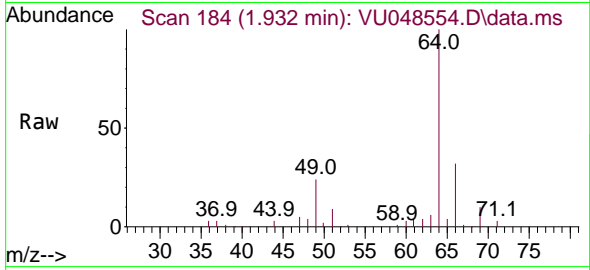




#8
 Chloroethane
 Concen: 44.617 ug/L
 RT: 1.932 min Scan# 184
 Delta R.T. 0.000 min
 Lab File: VU048554.D
 Acq: 13 May 2022 10:03

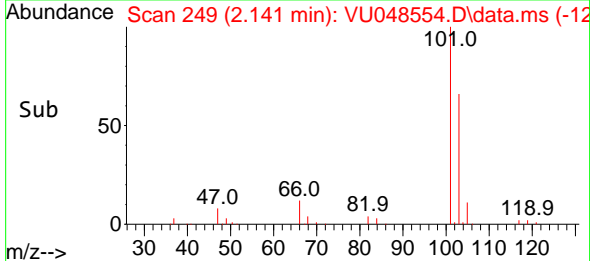
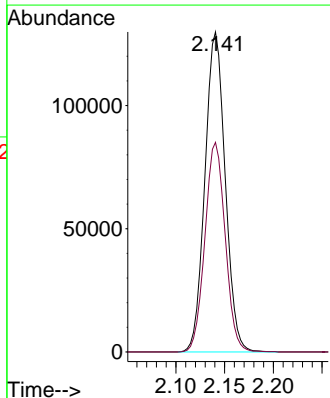
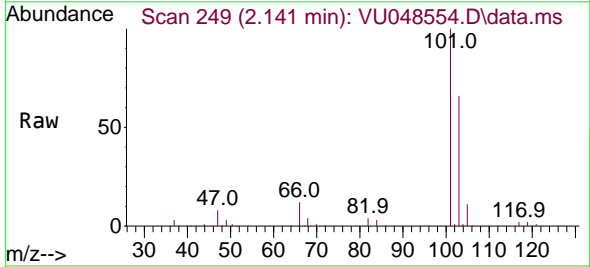
Instrument : MSVOA_U
 ClientSampleId : VSTD050126

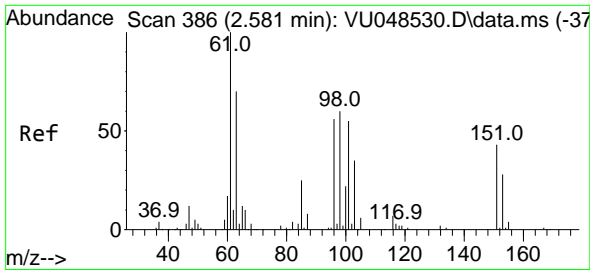
Tgt Ion: 64 Resp: 60644
 Ion Ratio Lower Upper
 64 100
 66 32.4 22.8 42.4



#9
 Trichlorofluoromethane
 Concen: 56.680 ug/L
 RT: 2.141 min Scan# 249
 Delta R.T. 0.003 min
 Lab File: VU048554.D
 Acq: 13 May 2022 10:03

Tgt Ion:101 Resp: 188269
 Ion Ratio Lower Upper
 101 100
 103 65.5 52.0 78.0



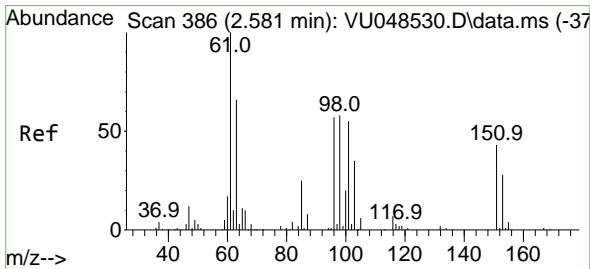
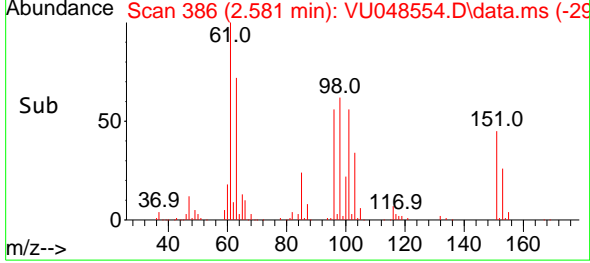
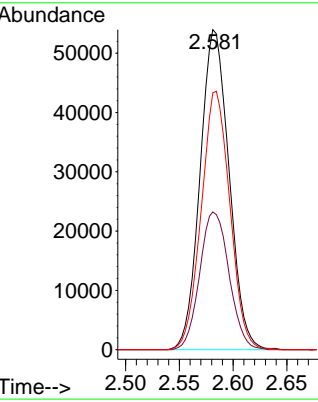
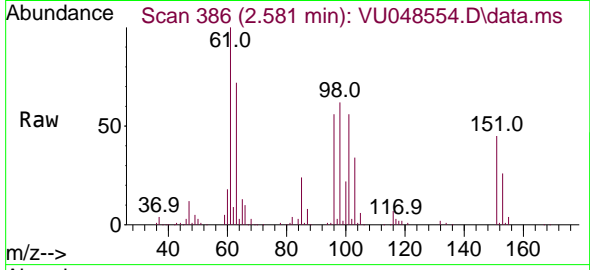


#10
 1,1,2-Trichloro-1,2,2-trifluoroethane
 Concen: 53.047 ug/L
 RT: 2.581 min Scan# 386
 Delta R.T. 0.000 min
 Lab File: VU048554.D
 Acq: 13 May 2022 10:03

Instrument :
 MSVOA_U
 ClientSampleId :
 VSTD050126

Tgt Ion:101 Resp: 101114

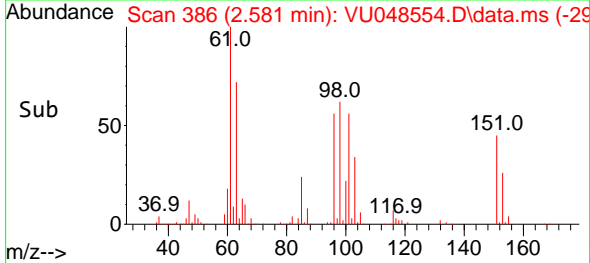
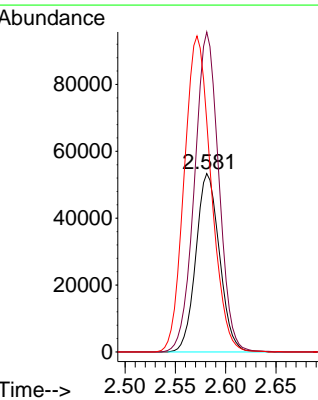
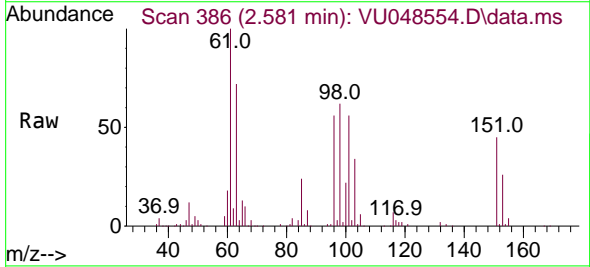
Ion	Ratio	Lower	Upper
101	100		
85	43.6	34.8	52.2
151	80.0	60.7	91.1

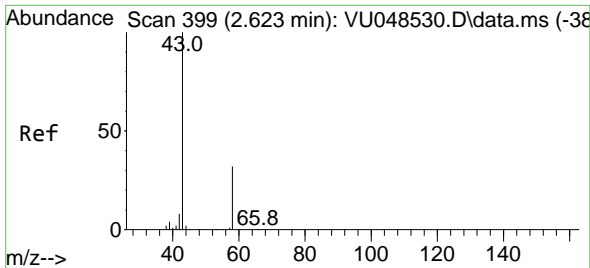


#12
 1,1-Dichloroethene
 Concen: 48.380 ug/L
 RT: 2.581 min Scan# 386
 Delta R.T. 0.000 min
 Lab File: VU048554.D
 Acq: 13 May 2022 10:03

Tgt Ion: 96 Resp: 87189

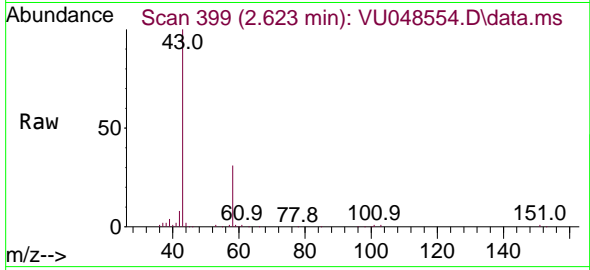
Ion	Ratio	Lower	Upper
96	100		
61	179.4	124.5	231.3
63	129.3	92.5	171.9



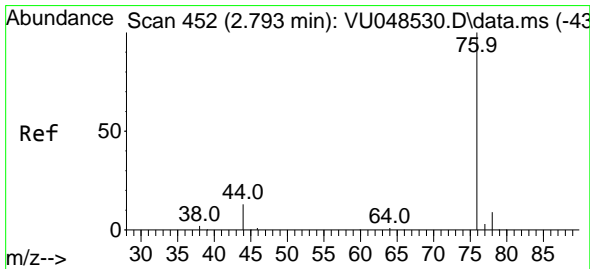
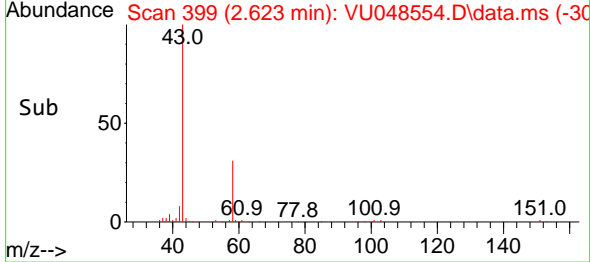
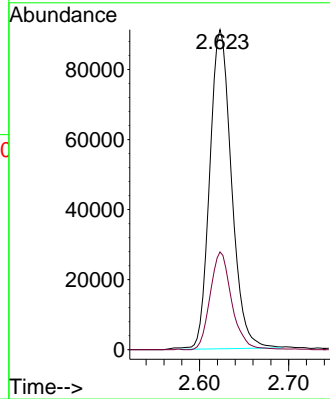


#13
 Acetone
 Concen: 108.657 ug/L
 RT: 2.623 min Scan# 399
 Delta R.T. 0.000 min
 Lab File: VU048554.D
 Acq: 13 May 2022 10:03

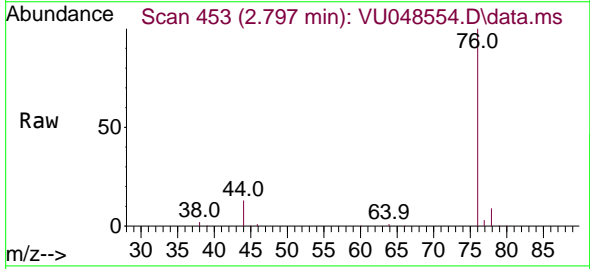
Instrument : MSVOA_U
 ClientSampleId : VSTD050126



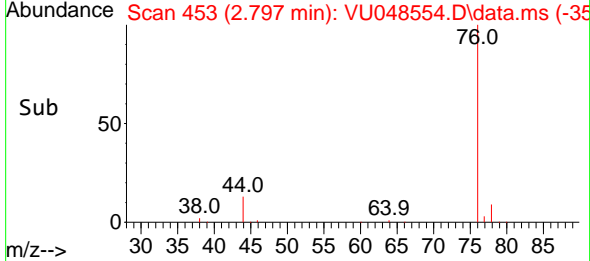
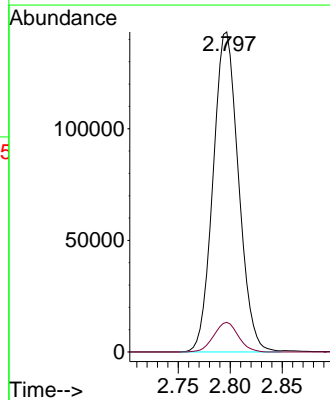
Tgt Ion: 43 Resp: 154528
 Ion Ratio Lower Upper
 43 100
 58 30.4 0.0 66.2

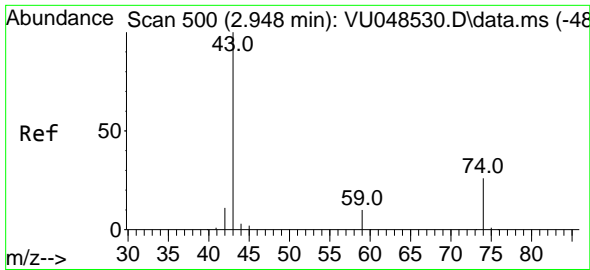


#14
 Carbon disulfide
 Concen: 43.680 ug/L
 RT: 2.797 min Scan# 453
 Delta R.T. 0.003 min
 Lab File: VU048554.D
 Acq: 13 May 2022 10:03



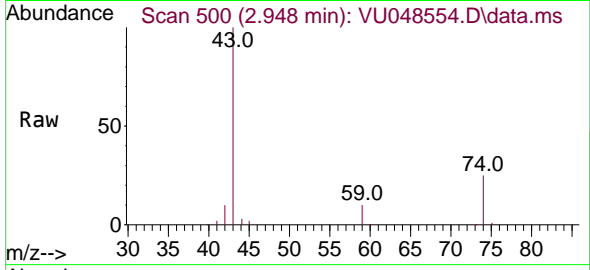
Tgt Ion: 76 Resp: 243993
 Ion Ratio Lower Upper
 76 100
 78 9.3 7.3 10.9



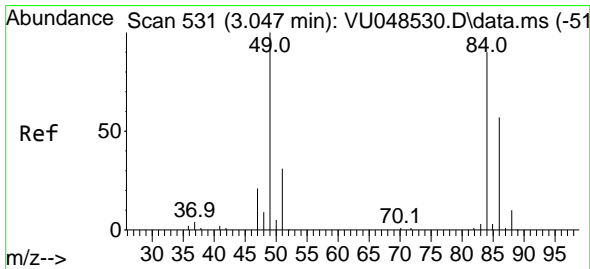
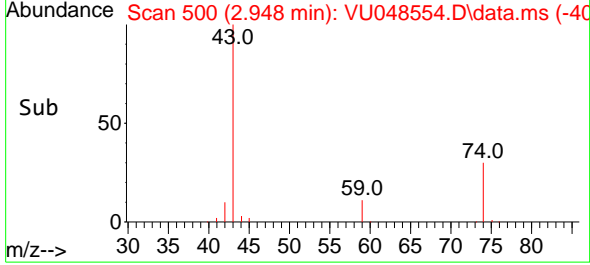
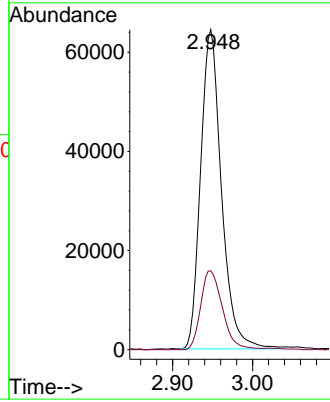


#15
 Methyl Acetate
 Concen: 40.101 ug/L
 RT: 2.948 min Scan# 500
 Delta R.T. 0.000 min
 Lab File: VU048554.D
 Acq: 13 May 2022 10:03

Instrument : MSVOA_U
 ClientSampleId : VSTD050126

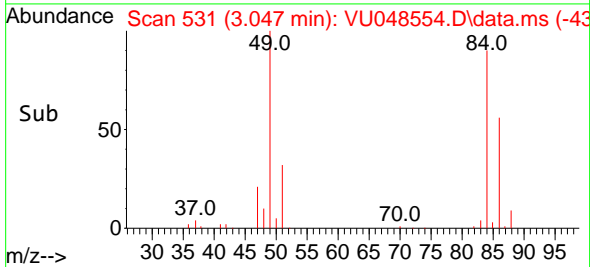
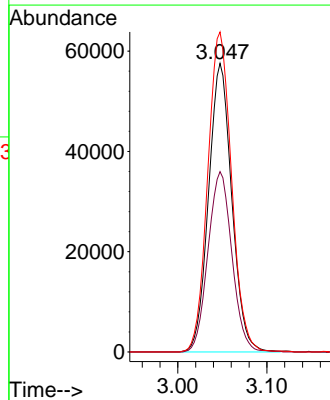
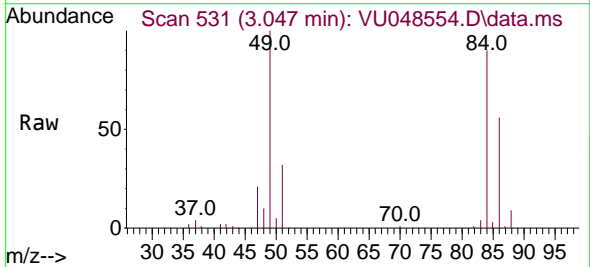


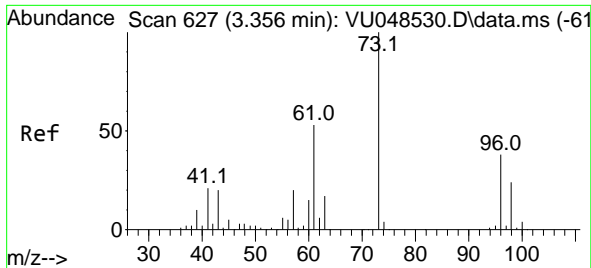
Tgt Ion: 43 Resp: 116832
 Ion Ratio Lower Upper
 43 100
 74 25.7 17.6 26.4



#16
 Methylene chloride
 Concen: 47.355 ug/L
 RT: 3.047 min Scan# 531
 Delta R.T. 0.000 min
 Lab File: VU048554.D
 Acq: 13 May 2022 10:03

Tgt Ion: 84 Resp: 104364
 Ion Ratio Lower Upper
 84 100
 86 62.5 44.8 83.2
 49 110.9 92.0 170.8

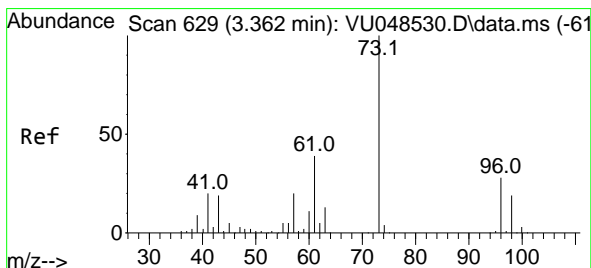
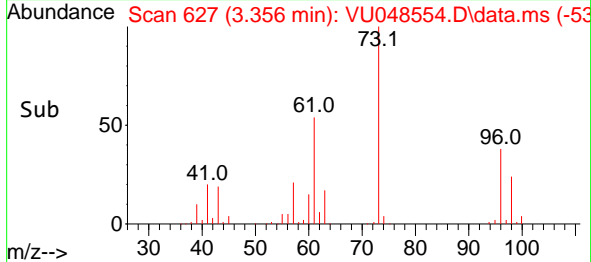
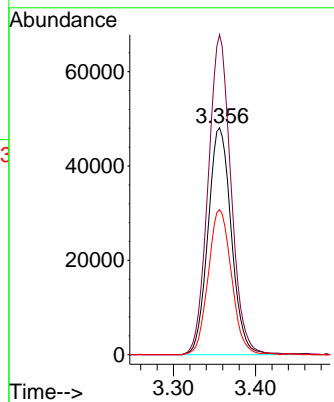
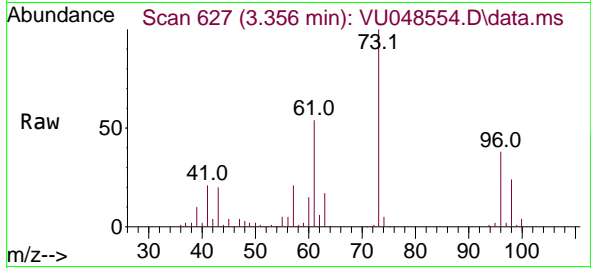




#17
 trans-1,2-Dichloroethene
 Concen: 49.520 ug/L
 RT: 3.356 min Scan# 617
 Delta R.T. 0.000 min
 Lab File: VU048554.D
 Acq: 13 May 2022 10:03

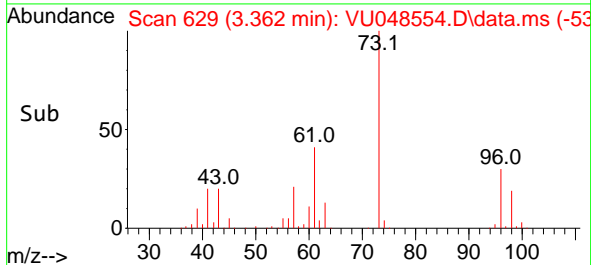
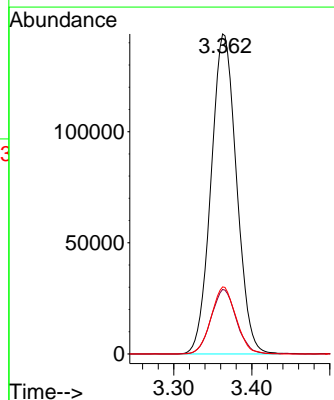
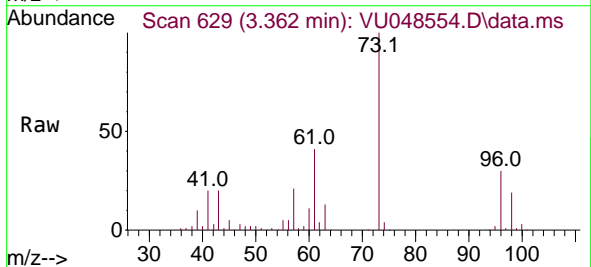
Instrument :
 MSVOA_U
 ClientSampleId :
 VSTD050126

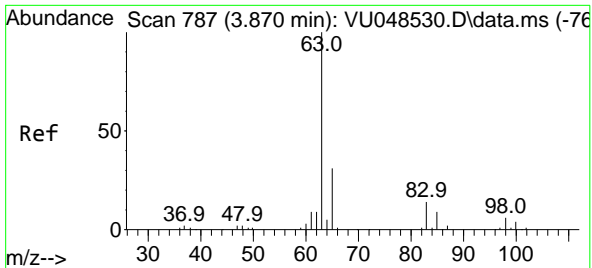
Tgt Ion: 96 Resp: 95212
 Ion Ratio Lower Upper
 96 100
 61 141.0 101.2 187.8
 98 63.9 43.3 80.3



#18
 Methyl tert-butyl Ether
 Concen: 50.416 ug/L
 RT: 3.362 min Scan# 629
 Delta R.T. 0.000 min
 Lab File: VU048554.D
 Acq: 13 May 2022 10:03

Tgt Ion: 73 Resp: 326444
 Ion Ratio Lower Upper
 73 100
 43 20.0 15.6 23.4
 57 20.5 18.1 27.1



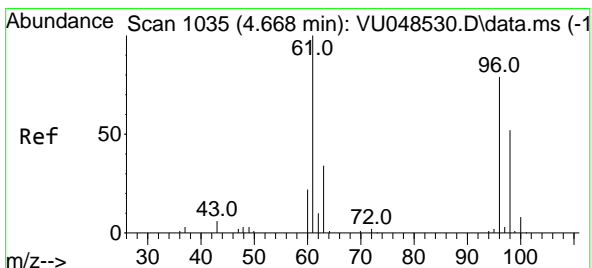
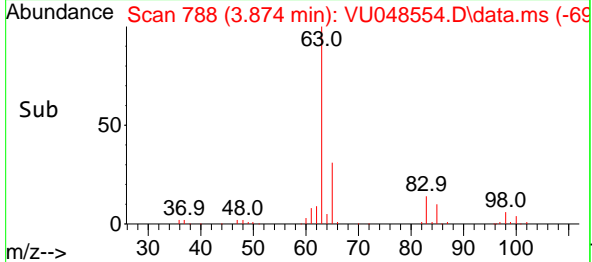
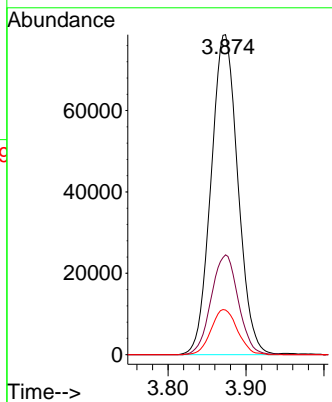
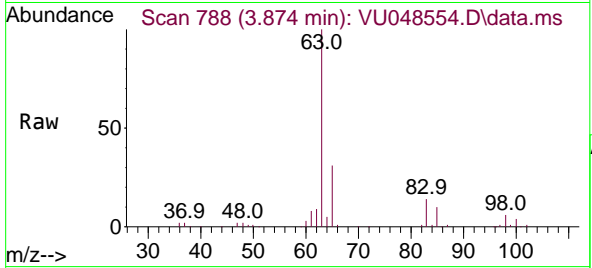


#19
 1,1-Dichloroethane
 Concen: 47.474 ug/L
 RT: 3.874 min Scan# 787
 Delta R.T. 0.003 min
 Lab File: VU048554.D
 Acq: 13 May 2022 10:03

Instrument :
 MSVOA_U
 ClientSampleId :
 VSTD050126

Tgt Ion: 63 Resp: 188215

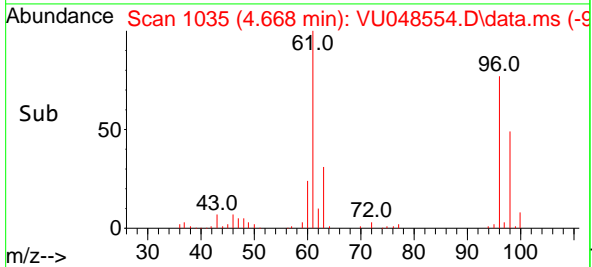
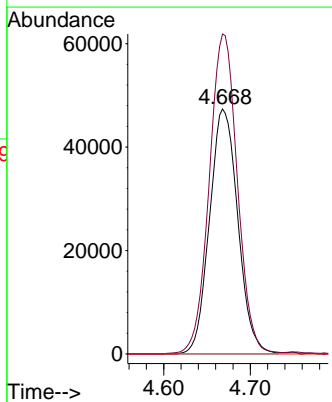
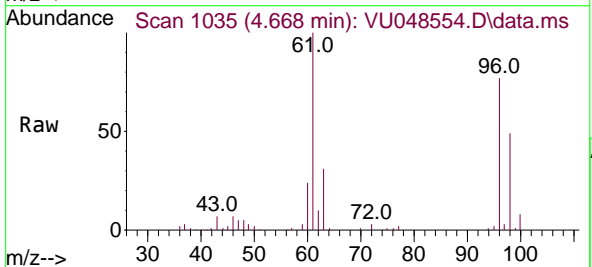
Ion	Ratio	Lower	Upper
63	100		
65	31.2	22.0	41.0
83	14.0	8.5	15.9

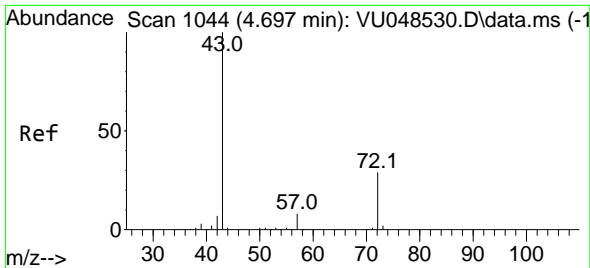


#20
 cis-1,2-Dichloroethene
 Concen: 49.567 ug/L
 RT: 4.668 min Scan# 1035
 Delta R.T. 0.000 min
 Lab File: VU048554.D
 Acq: 13 May 2022 10:03

Tgt Ion: 96 Resp: 107544

Ion	Ratio	Lower	Upper
96	100		
61	130.7	96.2	178.8
68	0.0	0.0	0.0



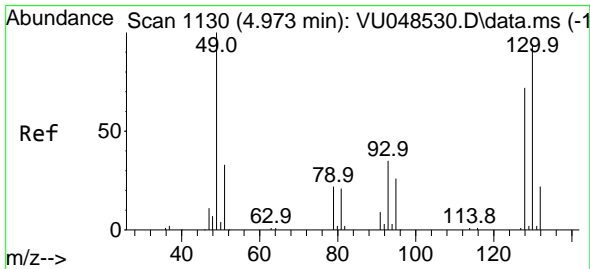
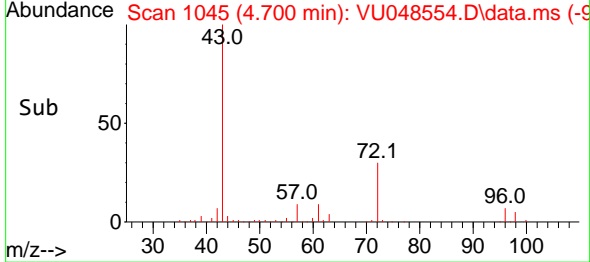
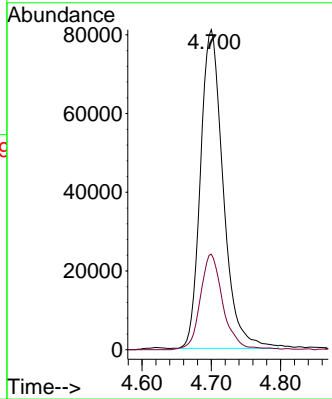
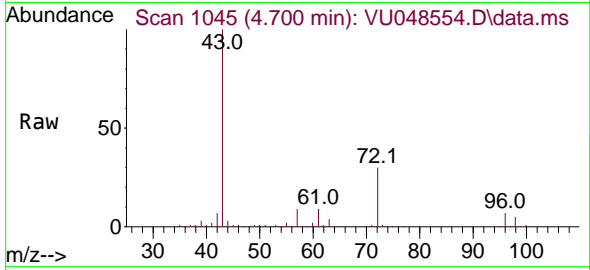


#22
 2-Butanone
 Concen: 86.810 ug/L
 RT: 4.700 min Scan# 1045
 Delta R.T. 0.003 min
 Lab File: VU048554.D
 Acq: 13 May 2022 10:03

Instrument : MSVOA_U
 ClientSampleId : VSTD050126

Tgt Ion: 43 Resp: 184552

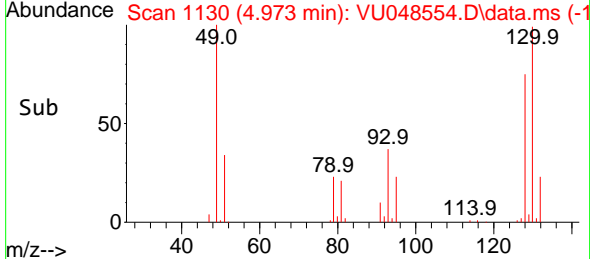
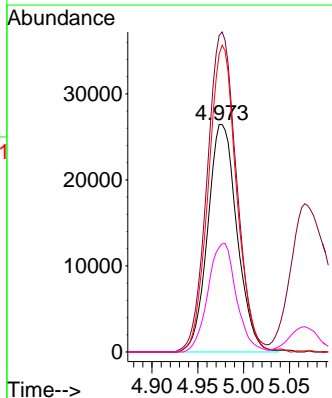
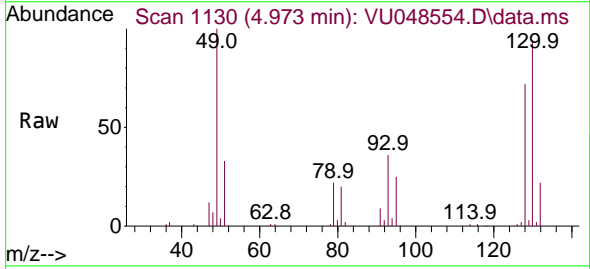
Ion	Ratio	Lower	Upper
43	100		
72	29.3	13.3	39.9

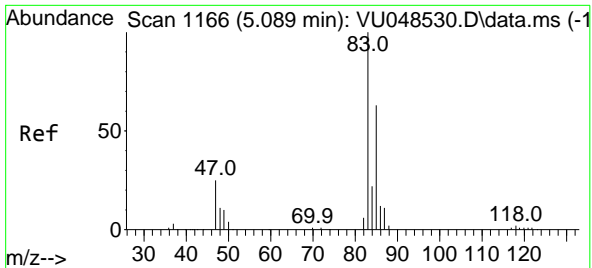


#23
 Bromochloromethane
 Concen: 51.357 ug/L
 RT: 4.973 min Scan# 1130
 Delta R.T. 0.000 min
 Lab File: VU048554.D
 Acq: 13 May 2022 10:03

Tgt Ion: 128 Resp: 58723

Ion	Ratio	Lower	Upper
128	100		
49	139.1	123.1	228.7
130	131.0	93.6	173.8
51	45.9	43.2	64.8

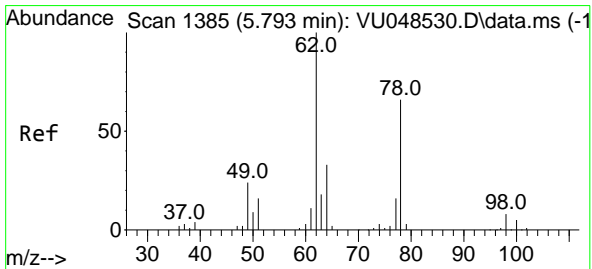
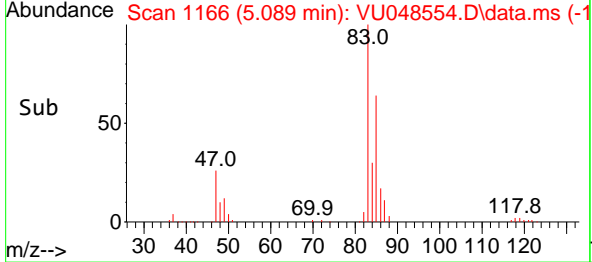
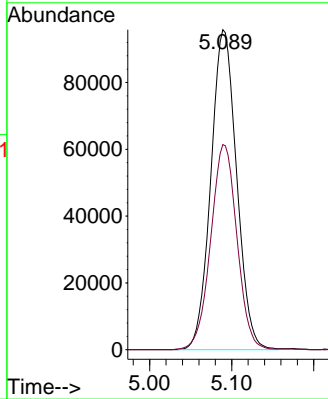
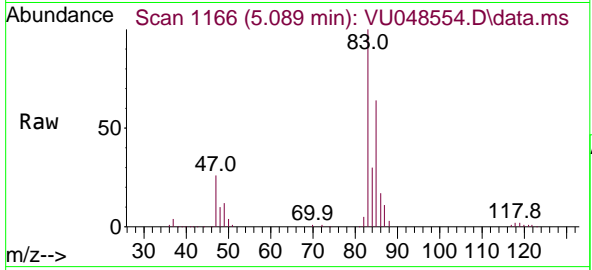




#25
 Chloroform
 Concen: 53.492 ug/L
 RT: 5.089 min Scan# 1166
 Delta R.T. 0.000 min
 Lab File: VU048554.D
 Acq: 13 May 2022 10:03

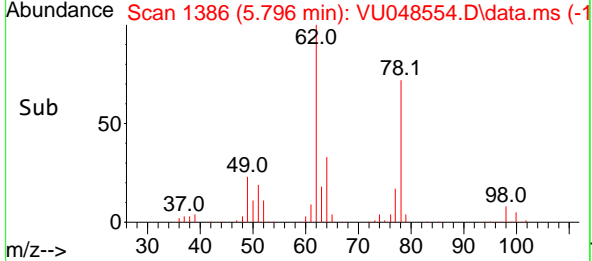
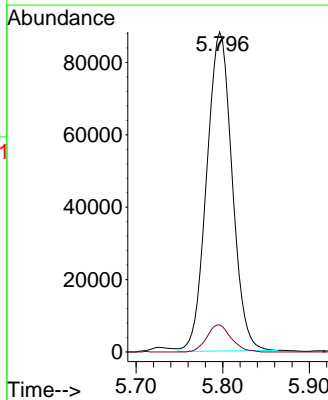
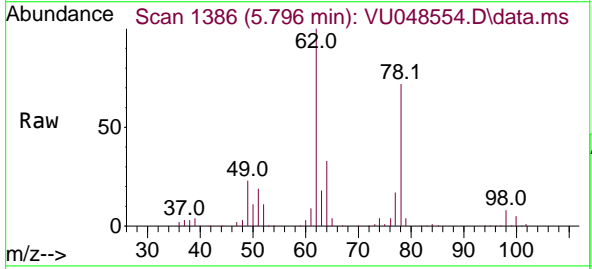
Instrument : MSVOA_U
 ClientSampleId : VSTD050126

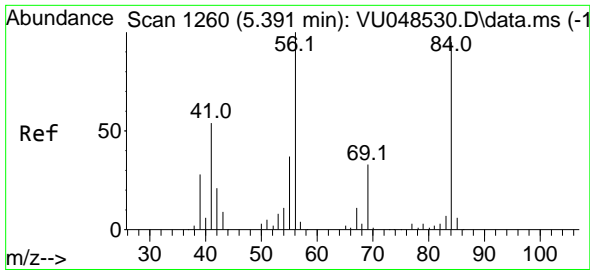
Tgt Ion: 83 Resp: 209416
 Ion Ratio Lower Upper
 83 100
 85 64.1 45.4 84.2



#27
 1,2-Dichloroethane
 Concen: 55.928 ug/L
 RT: 5.796 min Scan# 1386
 Delta R.T. 0.003 min
 Lab File: VU048554.D
 Acq: 13 May 2022 10:03

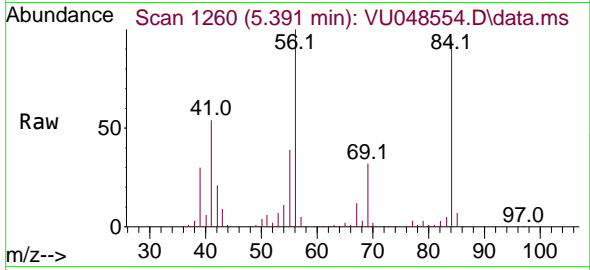
Tgt Ion: 62 Resp: 180018
 Ion Ratio Lower Upper
 62 100
 98 8.4 6.8 10.2





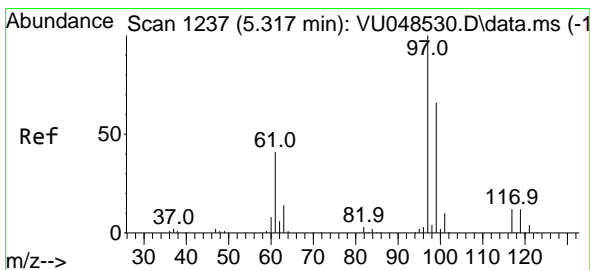
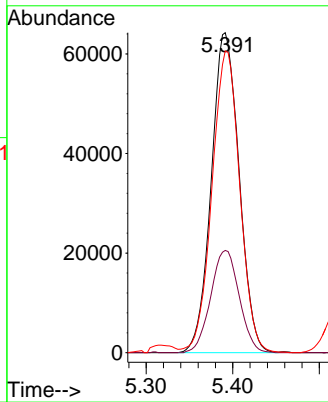
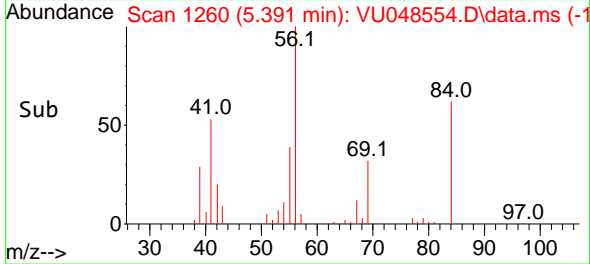
#29
 Cyclohexane
 Concen: 40.336 ug/L
 RT: 5.391 min Scan# 1260
 Delta R.T. 0.000 min
 Lab File: VU048554.D
 Acq: 13 May 2022 10:03

Instrument :
 MSVOA_U
 ClientSampleId :
 VSTD050126

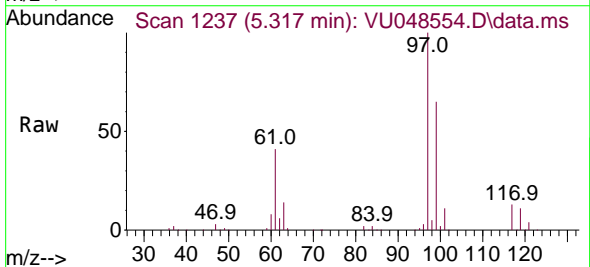


Tgt Ion: 56 Resp: 143325

Ion	Ratio	Lower	Upper
56	100		
69	32.7	23.4	35.0
84	94.1	65.5	98.3

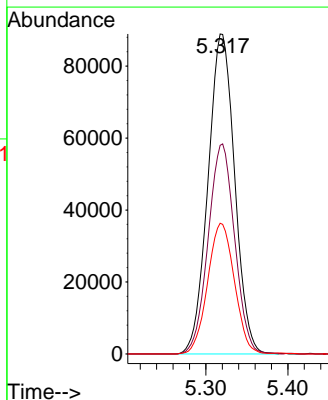
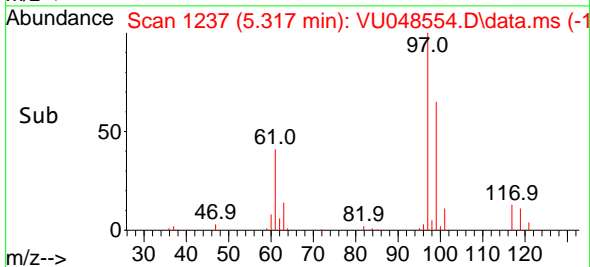


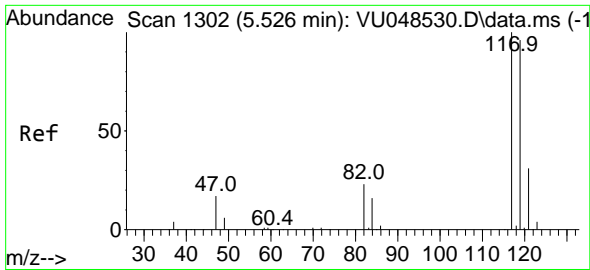
#30
 1,1,1-Trichloroethane
 Concen: 56.308 ug/L
 RT: 5.317 min Scan# 1237
 Delta R.T. 0.000 min
 Lab File: VU048554.D
 Acq: 13 May 2022 10:03



Tgt Ion: 97 Resp: 201359

Ion	Ratio	Lower	Upper
97	100		
99	65.2	50.5	75.7
61	40.9	35.0	52.4

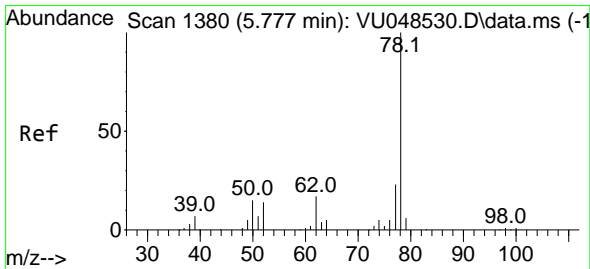
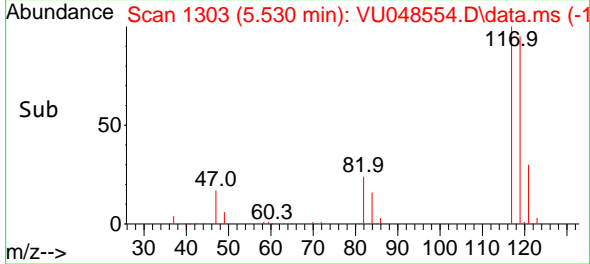
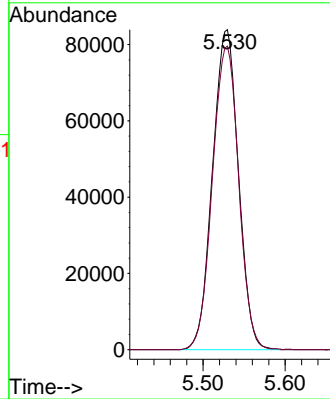
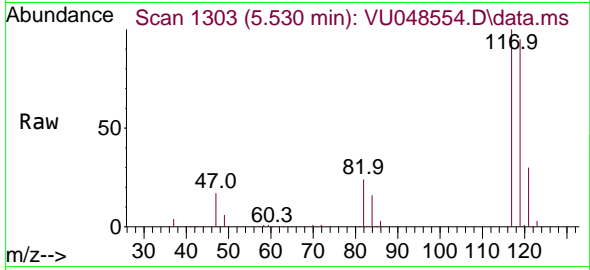




#31
 Carbon tetrachloride
 Concen: 60.236 ug/L
 RT: 5.530 min Scan# 1117
 Delta R.T. 0.003 min
 Lab File: VU048554.D
 Acq: 13 May 2022 10:03

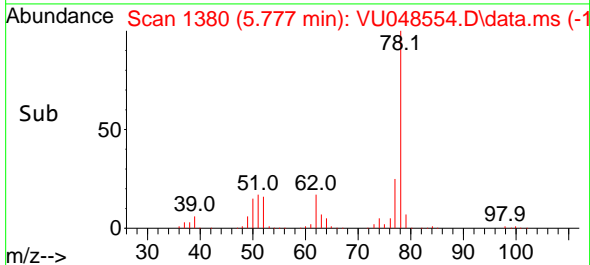
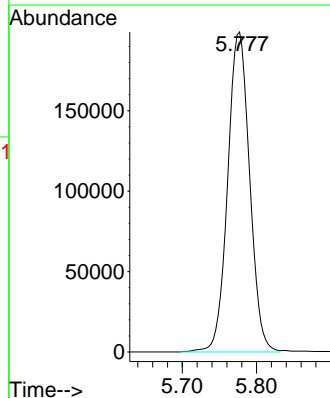
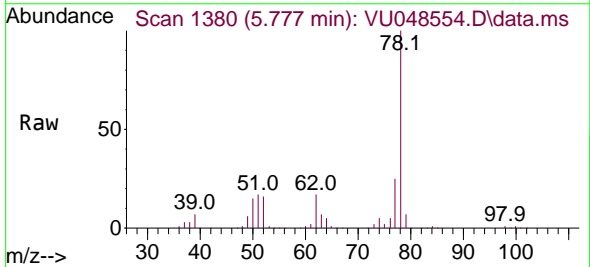
Instrument : MSVOA_U
 ClientSampleId : VSTD050126

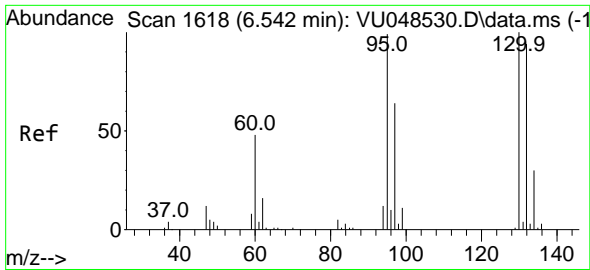
Tgt Ion:117 Resp: 184446
 Ion Ratio Lower Upper
 117 100
 119 96.0 76.5 114.7



#33
 Benzene
 Concen: 46.139 ug/L
 RT: 5.777 min Scan# 1380
 Delta R.T. 0.000 min
 Lab File: VU048554.D
 Acq: 13 May 2022 10:03

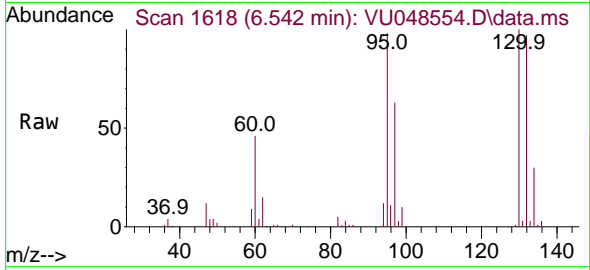
Tgt Ion: 78 Resp: 409069



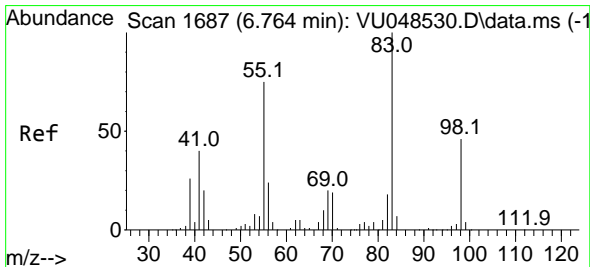
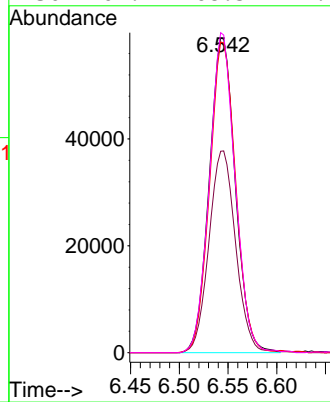
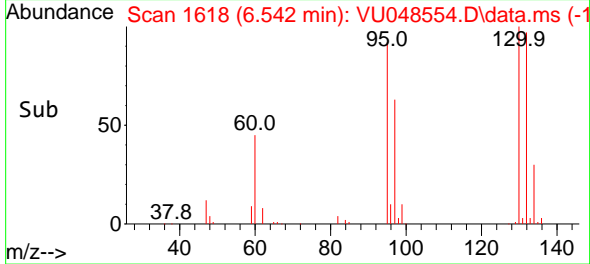


#34
 Trichloroethene
 Concen: 50.427 ug/L
 RT: 6.542 min Scan# 1618
 Delta R.T. 0.000 min
 Lab File: VU048554.D
 Acq: 13 May 2022 10:03

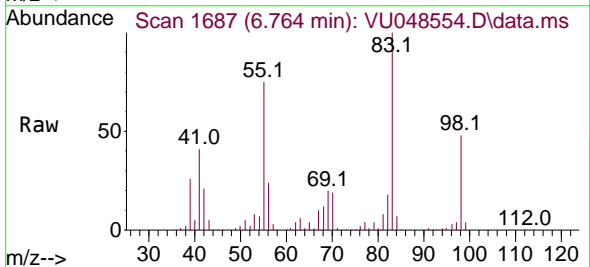
Instrument : MSVOA_U
 ClientSampleId : VSTD050126



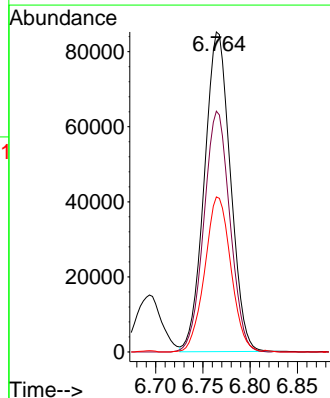
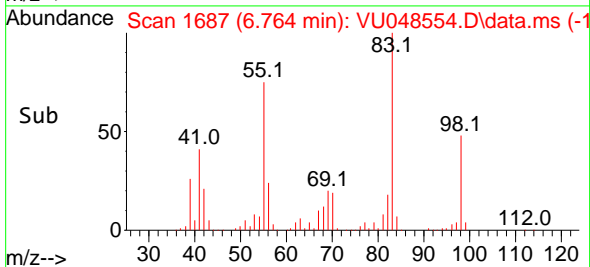
Tgt Ion: 95 Resp: 109899
 Ion Ratio Lower Upper
 95 100
 97 64.0 46.6 86.6
 132 98.8 67.3 124.9
 130 101.7 68.5 127.1

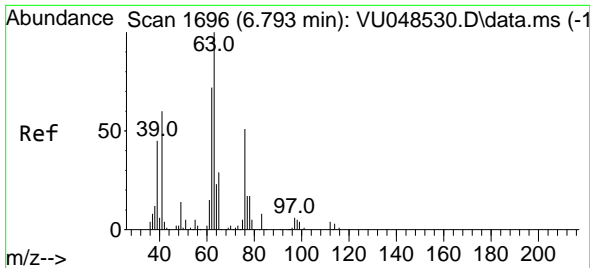


#35
 Methylcyclohexane
 Concen: 46.905 ug/L
 RT: 6.764 min Scan# 1687
 Delta R.T. 0.000 min
 Lab File: VU048554.D
 Acq: 13 May 2022 10:03



Tgt Ion: 83 Resp: 163097
 Ion Ratio Lower Upper
 83 100
 55 75.4 63.4 95.2
 98 48.7 35.9 53.9

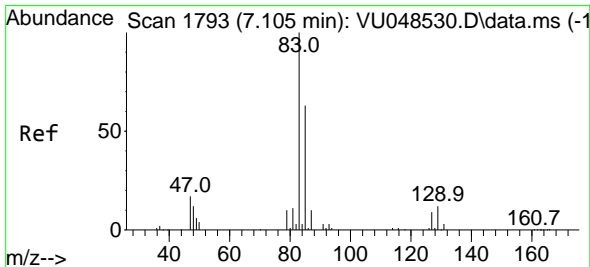
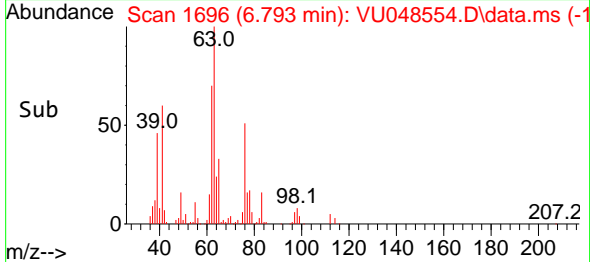
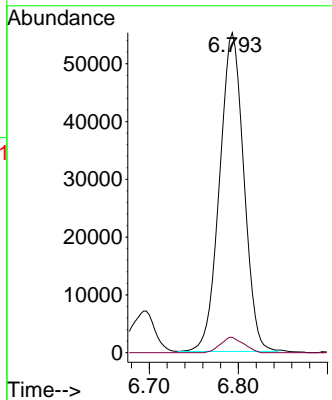
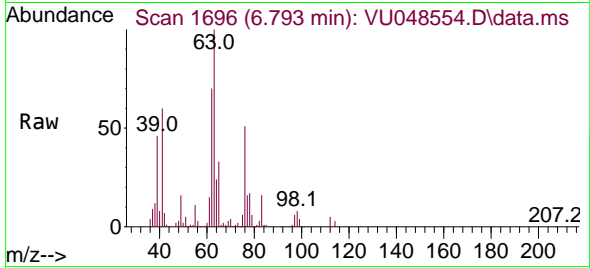




#37
 1,2-Dichloropropane
 Concen: 42.220 ug/L
 RT: 6.793 min Scan# 1696
 Delta R.T. 0.000 min
 Lab File: VU048554.D
 Acq: 13 May 2022 10:03

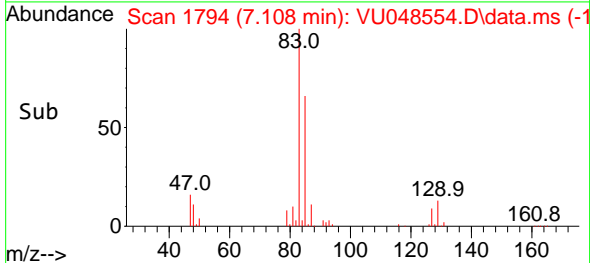
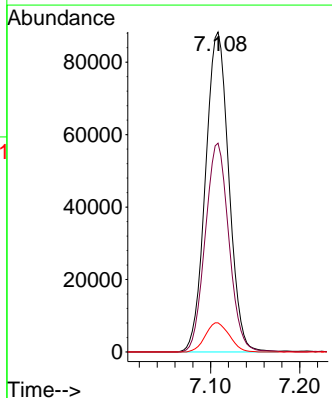
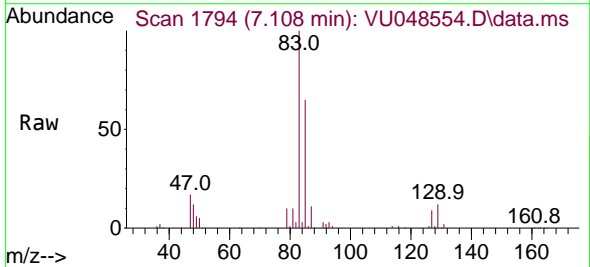
Instrument : MSVOA_U
 ClientSampleId : VSTD050126

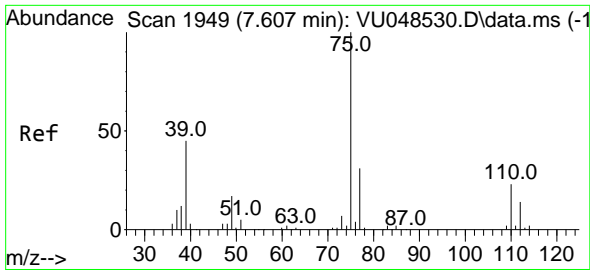
Tgt Ion: 63 Resp: 104474
 Ion Ratio Lower Upper
 63 100
 112 4.6 3.1 4.7



#38
 Bromodichloromethane
 Concen: 53.372 ug/L
 RT: 7.108 min Scan# 1794
 Delta R.T. 0.003 min
 Lab File: VU048554.D
 Acq: 13 May 2022 10:03

Tgt Ion: 83 Resp: 160810
 Ion Ratio Lower Upper
 83 100
 85 65.2 45.5 84.5
 127 9.1 6.9 10.3

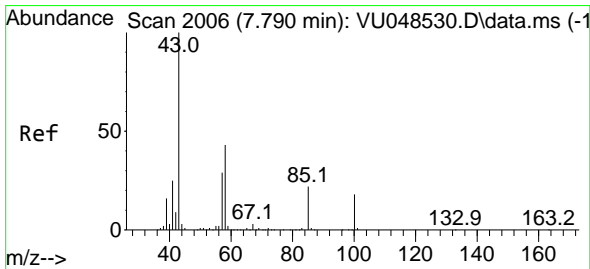
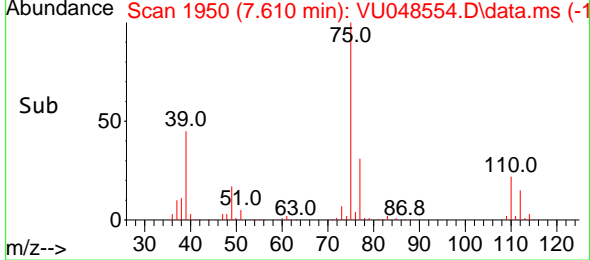
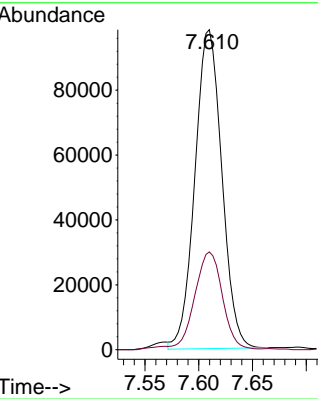
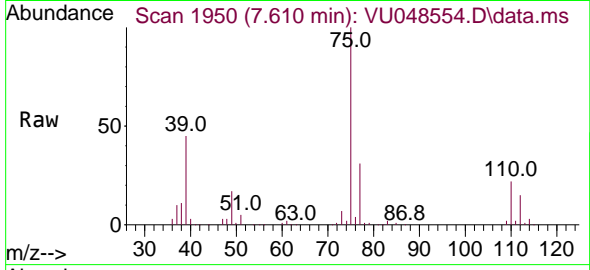




#39
 cis-1,3-Dichloropropene
 Concen: 48.589 ug/L
 RT: 7.610 min Scan# 1949
 Delta R.T. 0.003 min
 Lab File: VU048554.D
 Acq: 13 May 2022 10:03

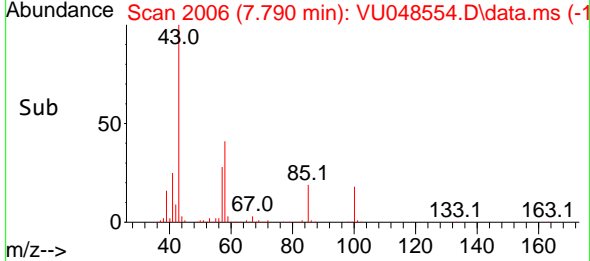
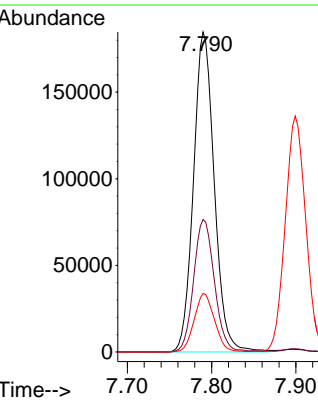
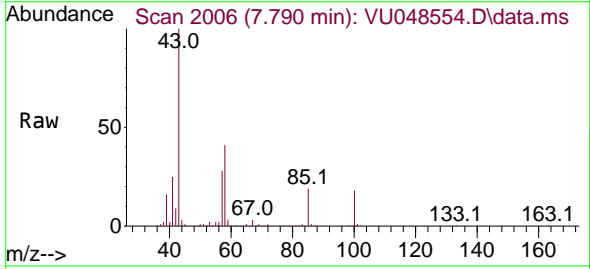
Instrument : MSVOA_U
 ClientSampleId : VSTD050126

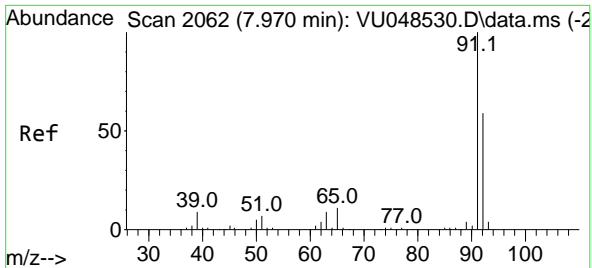
Tgt Ion: 75 Resp: 171017
 Ion Ratio Lower Upper
 75 100
 77 30.5 22.5 41.9



#40
 4-Methyl-2-pentanone
 Concen: 80.014 ug/L
 RT: 7.790 min Scan# 2006
 Delta R.T. 0.000 min
 Lab File: VU048554.D
 Acq: 13 May 2022 10:03

Tgt Ion: 43 Resp: 317242
 Ion Ratio Lower Upper
 43 100
 58 41.3 31.0 46.4
 100 17.9 11.2 16.8#

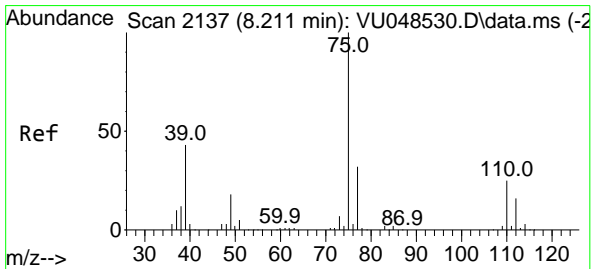
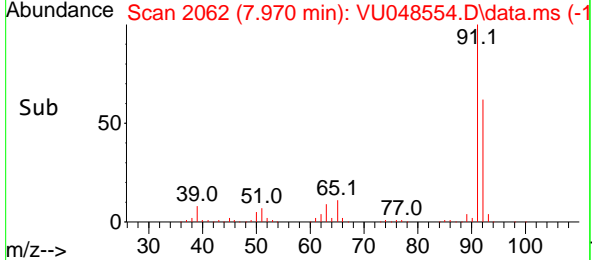
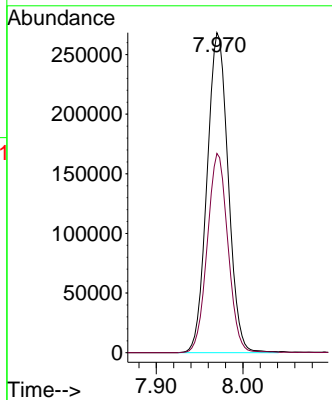
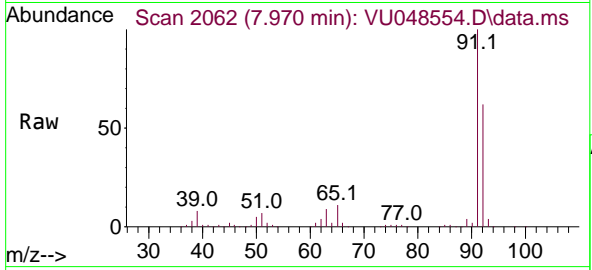




#42
 Toluene
 Concen: 49.733 ug/L
 RT: 7.970 min Scan# 2062
 Delta R.T. 0.000 min
 Lab File: VU048554.D
 Acq: 13 May 2022 10:03

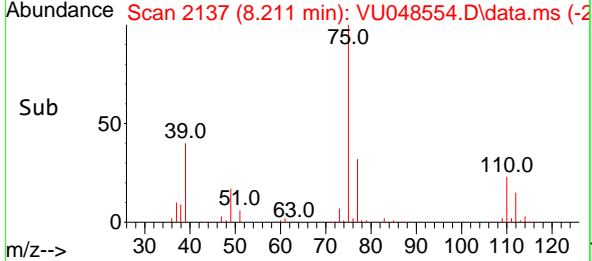
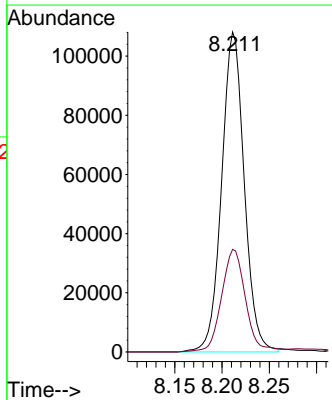
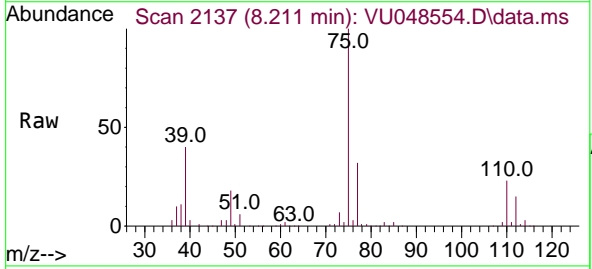
Instrument : MSVOA_U
 ClientSampleId : VSTD050126

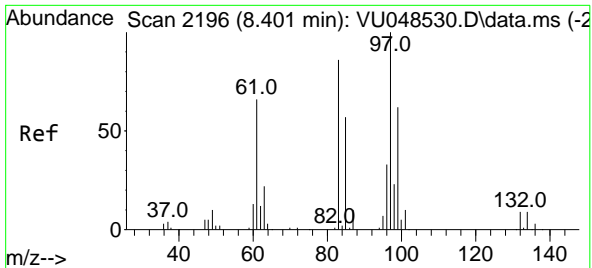
Tgt Ion: 91 Resp: 455079
 Ion Ratio Lower Upper
 91 100
 92 62.2 41.7 77.5



#44
 trans-1,3-Dichloropropene
 Concen: 52.628 ug/L
 RT: 8.211 min Scan# 2137
 Delta R.T. 0.000 min
 Lab File: VU048554.D
 Acq: 13 May 2022 10:03

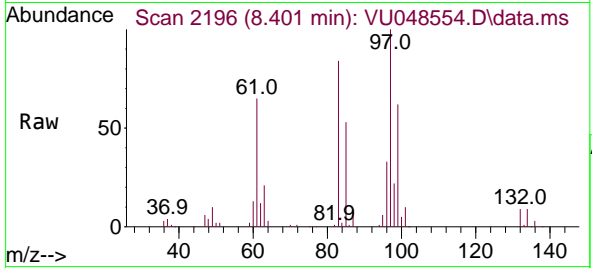
Tgt Ion: 75 Resp: 180008
 Ion Ratio Lower Upper
 75 100
 77 32.1 22.6 42.0





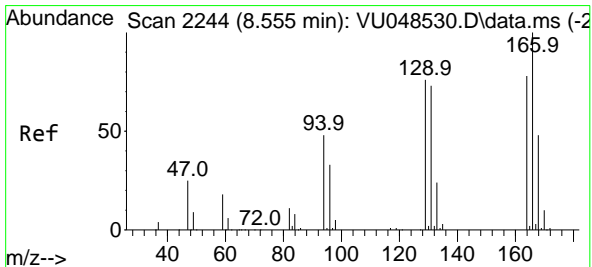
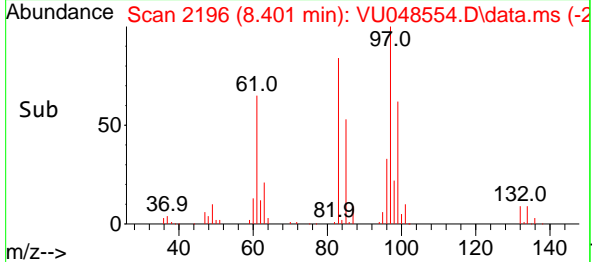
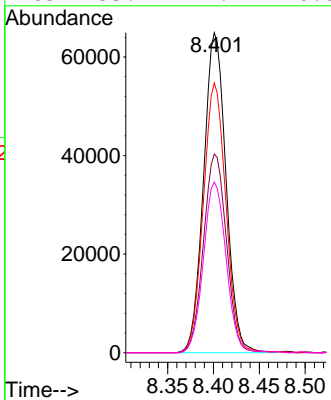
#45
 1,1,2-Trichloroethane
 Concen: 49.418 ug/L
 RT: 8.401 min Scan# 2196
 Delta R.T. 0.000 min
 Lab File: VU048554.D
 Acq: 13 May 2022 10:03

Instrument :
 MSVOA_U
 ClientSampleId :
 VSTD050126

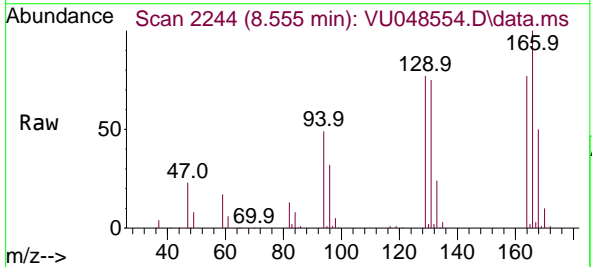


Tgt Ion: 97 Resp: 110587

Ion	Ratio	Lower	Upper
97	100		
99	62.1	43.5	80.9
83	84.3	60.5	112.5
85	53.4	41.4	76.8

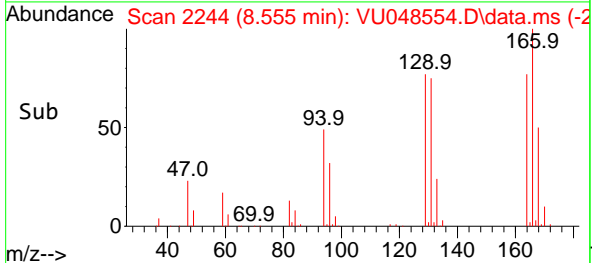
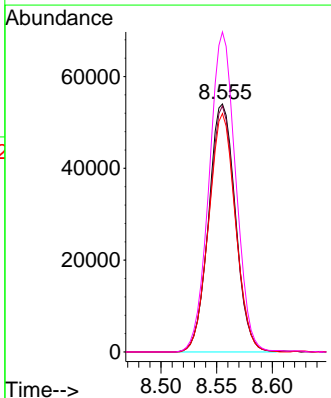


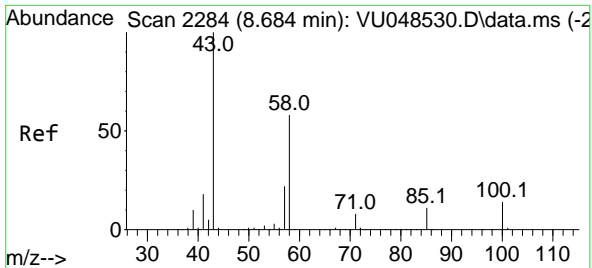
#46
 Tetrachloroethene
 Concen: 55.275 ug/L
 RT: 8.555 min Scan# 2244
 Delta R.T. 0.000 min
 Lab File: VU048554.D
 Acq: 13 May 2022 10:03



Tgt Ion: 164 Resp: 90497

Ion	Ratio	Lower	Upper
164	100		
129	99.3	69.2	128.6
131	96.2	65.2	121.0
166	129.1	86.6	160.8



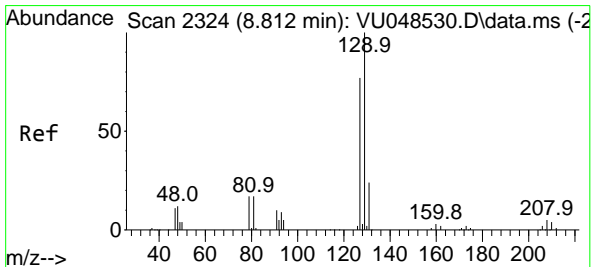
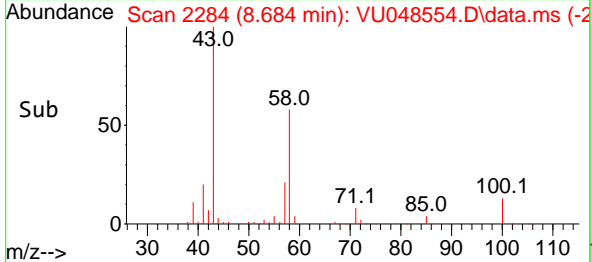
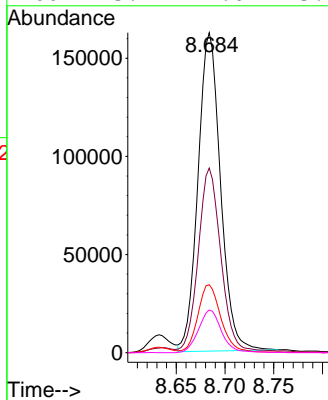
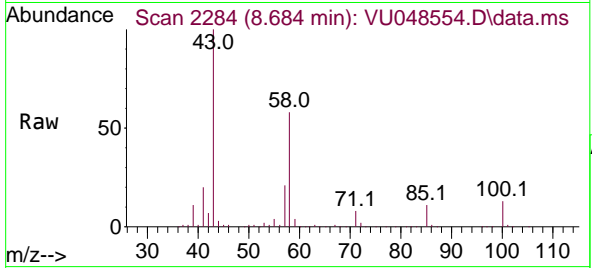


#48
 2-Hexanone
 Concen: 79.141 ug/L
 RT: 8.684 min Scan# 21
 Delta R.T. 0.000 min
 Lab File: VU048554.D
 Acq: 13 May 2022 10:03

Instrument : MSVOA_U
 ClientSampleId : VSTD050126

Tgt Ion: 43 Resp: 260769

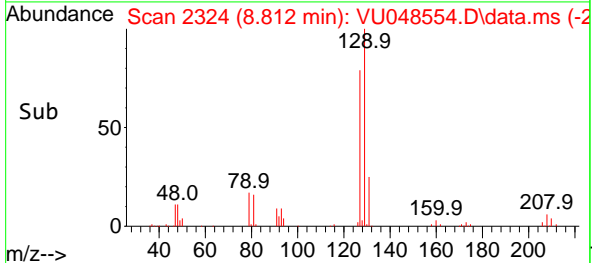
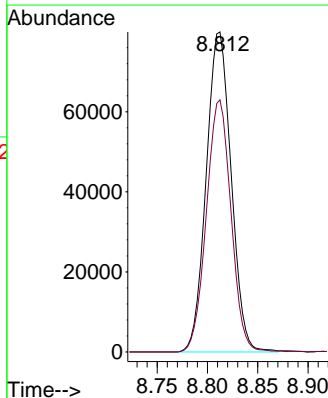
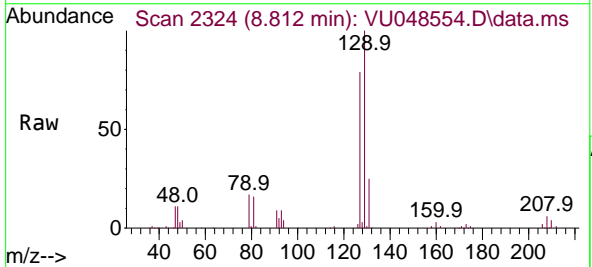
Ion	Ratio	Lower	Upper
43	100		
58	57.5	44.3	66.5
57	22.2	15.7	23.5
100	13.7	9.0	13.4

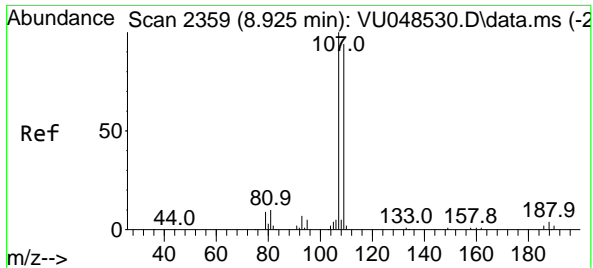


#49
 Dibromochloromethane
 Concen: 57.394 ug/L
 RT: 8.812 min Scan# 2324
 Delta R.T. 0.000 min
 Lab File: VU048554.D
 Acq: 13 May 2022 10:03

Tgt Ion: 129 Resp: 137929

Ion	Ratio	Lower	Upper
129	100		
127	78.8	55.2	102.4

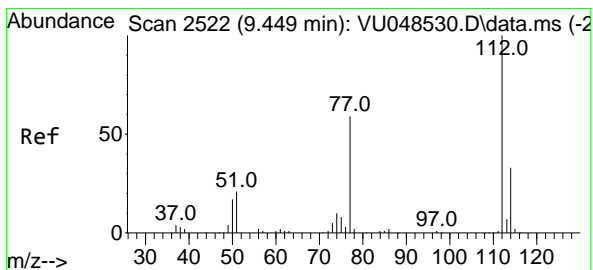
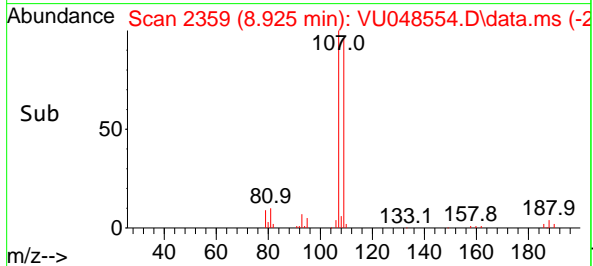
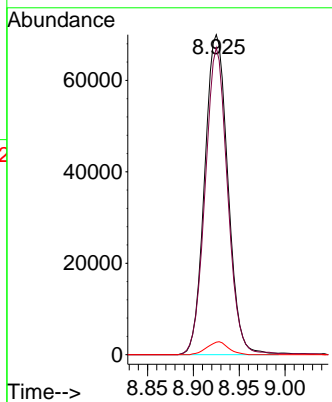
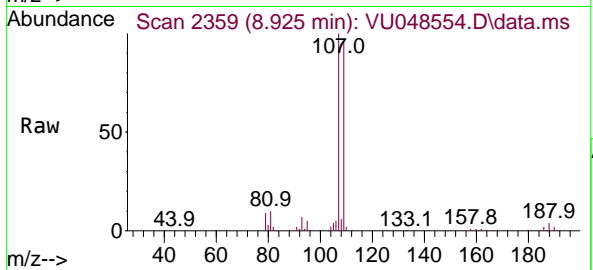




#50
 1,2-Dibromoethane
 Concen: 52.054 ug/L
 RT: 8.925 min Scan# 21
 Delta R.T. 0.000 min
 Lab File: VU048554.D
 Acq: 13 May 2022 10:03

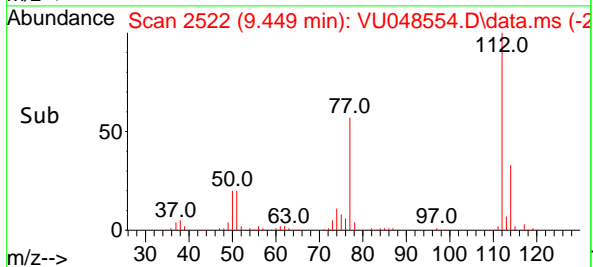
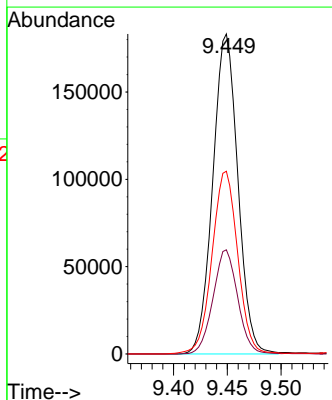
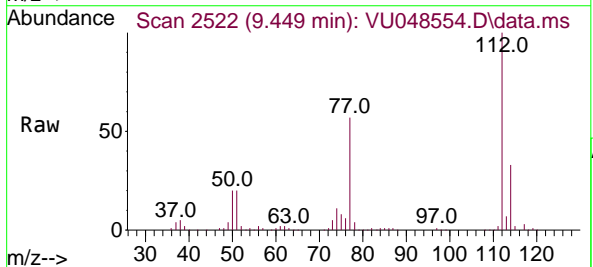
Instrument :
 MSVOA_U
 ClientSampleId :
 VSTD050126

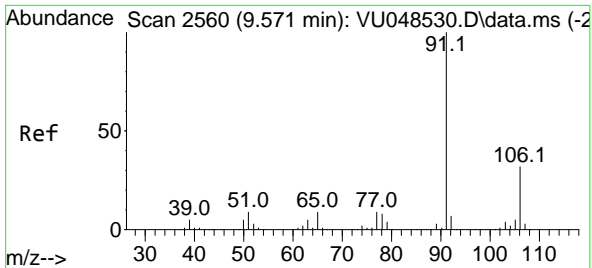
Tgt Ion:107 Resp: 123134
 Ion Ratio Lower Upper
 107 100
 109 95.9 65.7 122.1
 188 3.9 2.9 4.3



#51
 Chlorobenzene
 Concen: 51.601 ug/L
 RT: 9.449 min Scan# 2522
 Delta R.T. 0.000 min
 Lab File: VU048554.D
 Acq: 13 May 2022 10:03

Tgt Ion:112 Resp: 297507
 Ion Ratio Lower Upper
 112 100
 114 32.6 23.0 42.6
 77 57.1 48.4 72.6

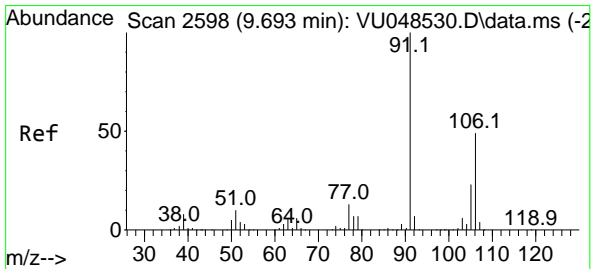
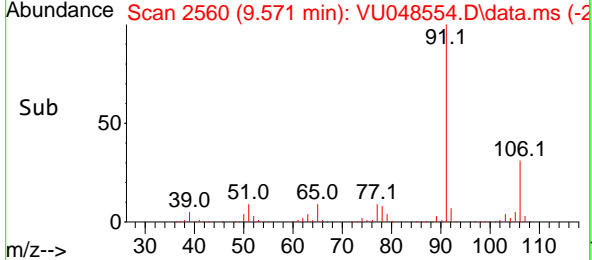
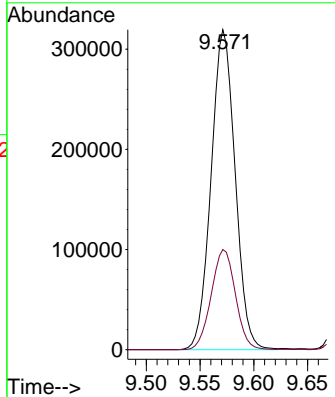
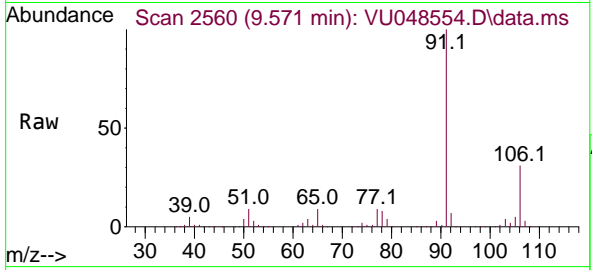




#52
 Ethylbenzene
 Concen: 52.062 ug/L
 RT: 9.571 min Scan# 21
 Delta R.T. 0.000 min
 Lab File: VU048554.D
 Acq: 13 May 2022 10:03

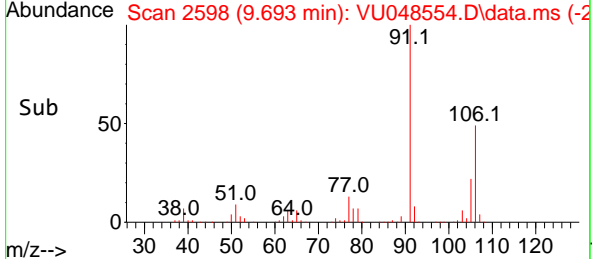
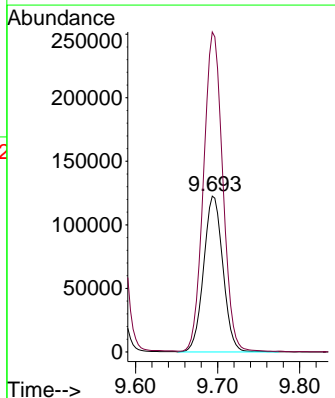
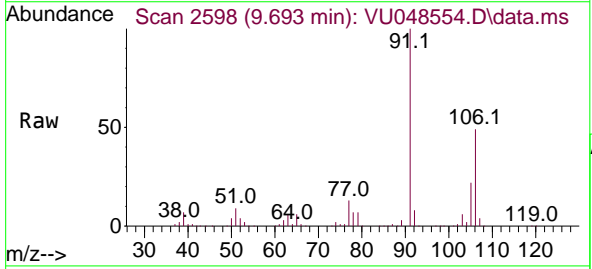
Instrument : MSVOA_U
 ClientSampleId : VSTD050126

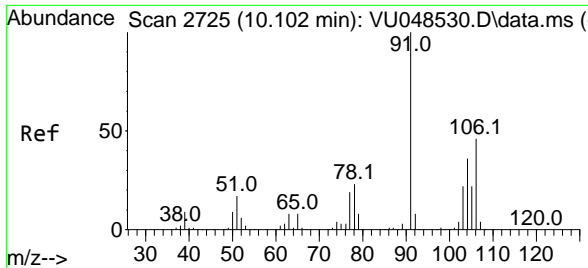
Tgt Ion: 91 Resp: 496254
 Ion Ratio Lower Upper
 91 100
 106 31.3 21.7 40.3



#53
 m,p-Xylene
 Concen: 54.455 ug/L
 RT: 9.693 min Scan# 2598
 Delta R.T. 0.000 min
 Lab File: VU048554.D
 Acq: 13 May 2022 10:03

Tgt Ion: 106 Resp: 200358
 Ion Ratio Lower Upper
 106 100
 91 205.2 144.1 267.7

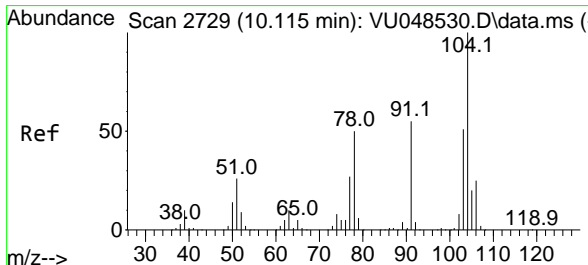
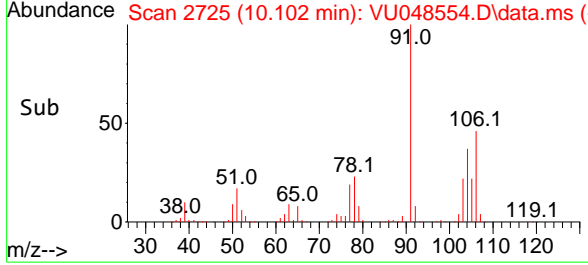
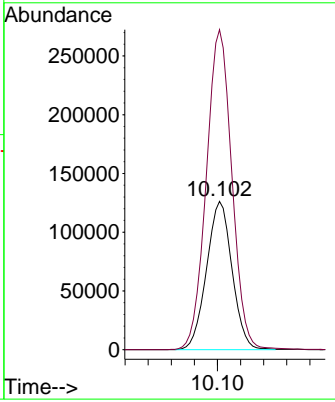
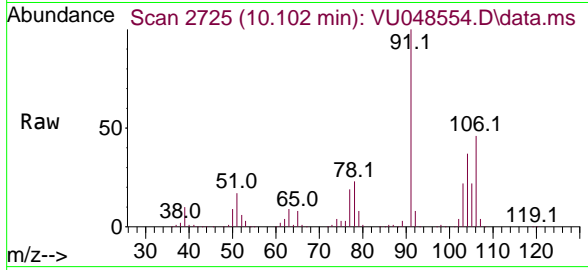




#54
 o-Xylene
 Concen: 52.291 ug/L
 RT: 10.102 min Scan# 21
 Delta R.T. 0.000 min
 Lab File: VU048554.D
 Acq: 13 May 2022 10:03

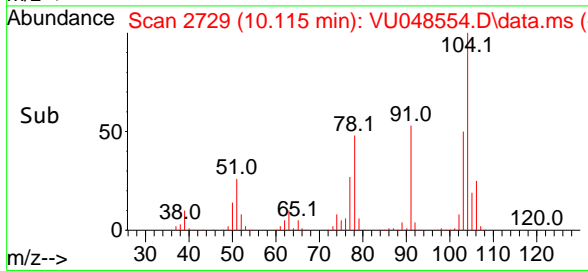
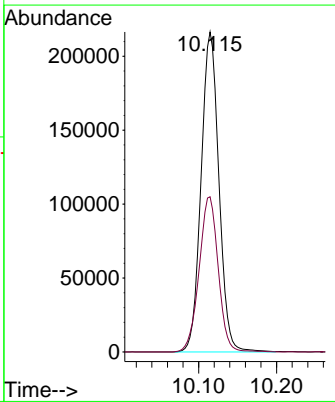
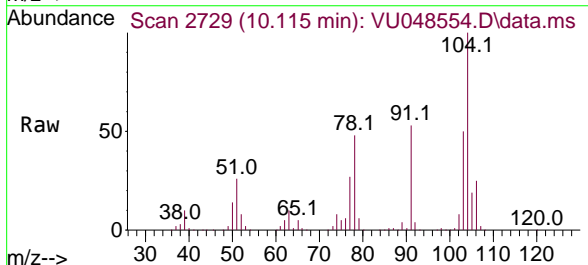
Instrument : MSVOA_U
 ClientSampleId : VSTD050126

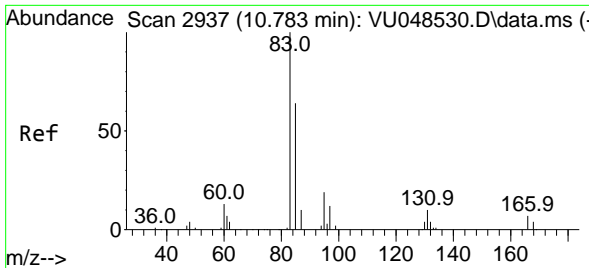
Tgt Ion:106 Resp: 193562
 Ion Ratio Lower Upper
 106 100
 91 215.6 148.8 276.4



#55
 Styrene
 Concen: 57.177 ug/L
 RT: 10.115 min Scan# 2729
 Delta R.T. 0.000 min
 Lab File: VU048554.D
 Acq: 13 May 2022 10:03

Tgt Ion:104 Resp: 344120
 Ion Ratio Lower Upper
 104 100
 78 48.5 33.4 62.0

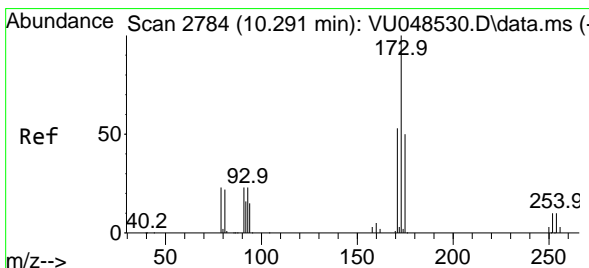
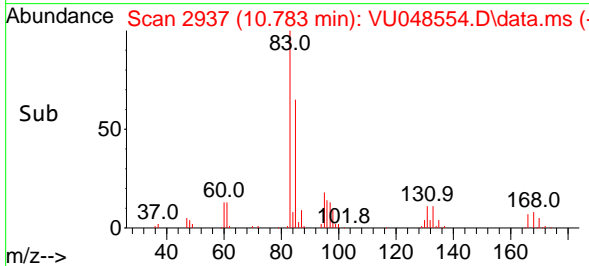
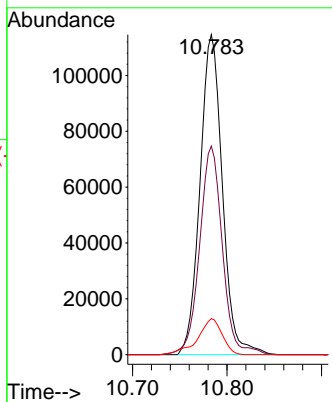
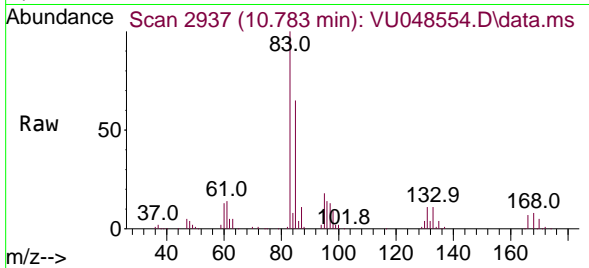




#57
 1,1,2,2-Tetrachloroethane
 Concen: 44.916 ug/L
 RT: 10.783 min Scan# 2937
 Delta R.T. 0.000 min
 Lab File: VU048554.D
 Acq: 13 May 2022 10:03

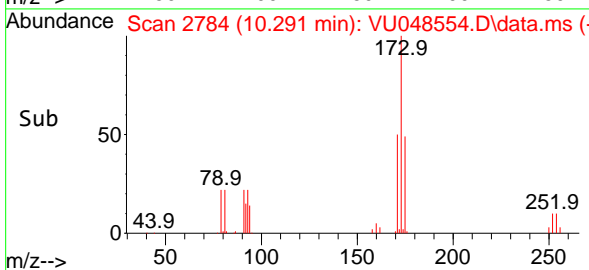
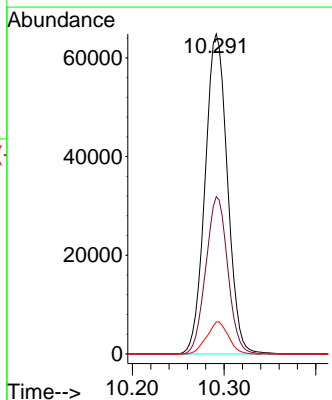
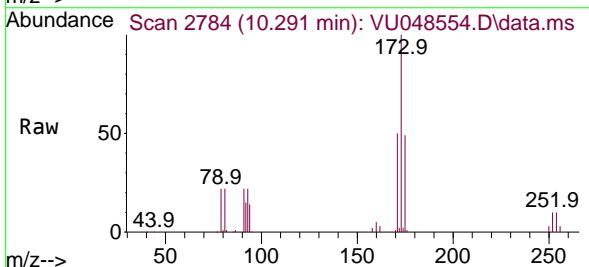
Instrument : MSVOA_U
 ClientSampleId : VSTD050126

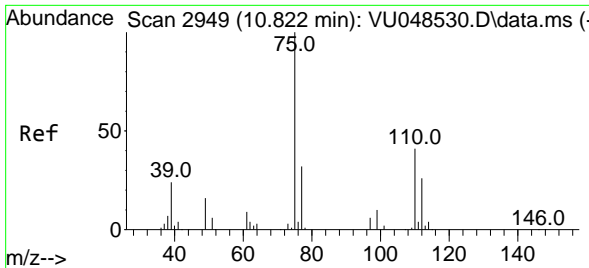
Tgt Ion	Resp	Lower	Upper
83	188383	100	
85	65.2	45.4	84.4
131	11.2	7.4	11.0



#59
 Bromoform
 Concen: 49.440 ug/L
 RT: 10.291 min Scan# 2784
 Delta R.T. 0.000 min
 Lab File: VU048554.D
 Acq: 13 May 2022 10:03

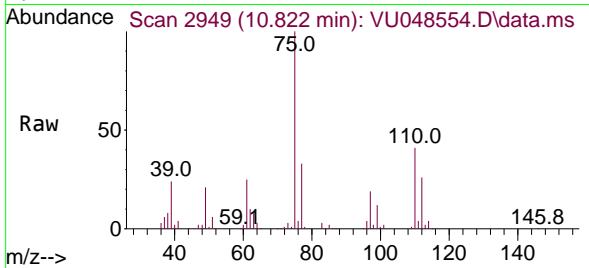
Tgt Ion	Resp	Lower	Upper
173	109828	100	
175	48.2	39.1	58.7
254	9.7	7.3	10.9



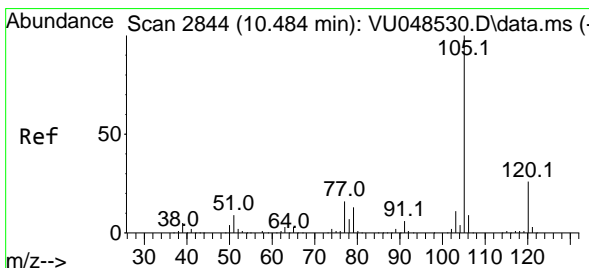
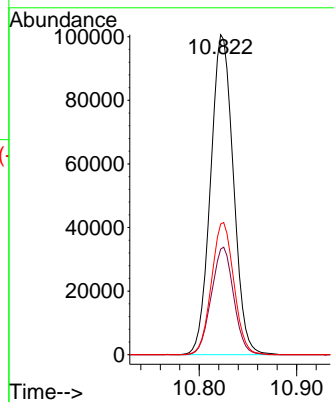
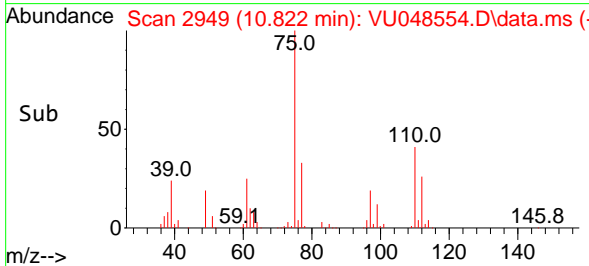


#60
 1,2,3-Trichloropropane
 Concen: 40.060 ug/L
 RT: 10.822 min Scan# 2949
 Delta R.T. 0.000 min
 Lab File: VU048554.D
 Acq: 13 May 2022 10:03

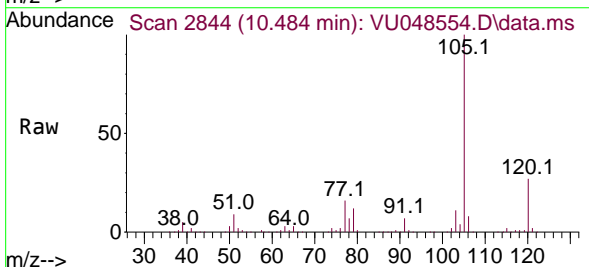
Instrument : MSVOA_U
 ClientSampleId : VSTD050126



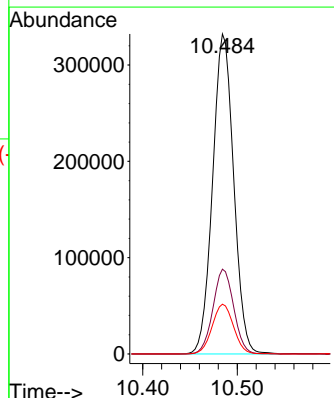
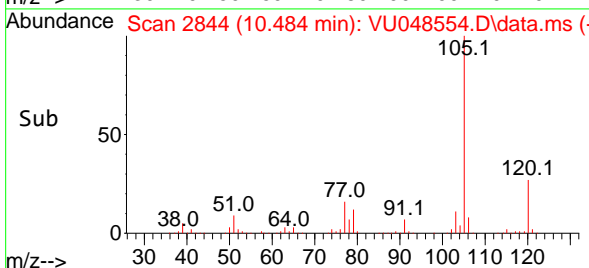
Tgt Ion: 75 Resp: 163794
 Ion Ratio Lower Upper
 75 100
 77 32.9 25.5 38.3
 110 40.6 28.9 43.3

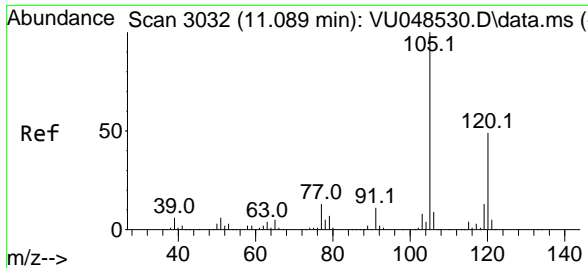


#61
 Isopropylbenzene
 Concen: 46.823 ug/L
 RT: 10.484 min Scan# 2844
 Delta R.T. 0.000 min
 Lab File: VU048554.D
 Acq: 13 May 2022 10:03



Tgt Ion: 105 Resp: 513926
 Ion Ratio Lower Upper
 105 100
 120 26.1 21.0 31.4
 77 15.8 12.5 18.7

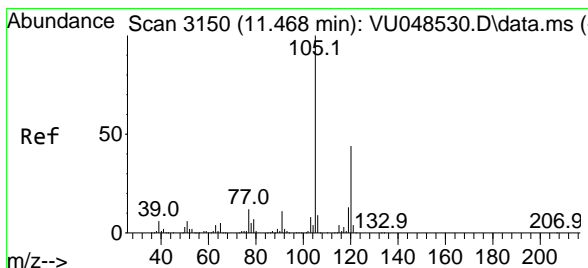
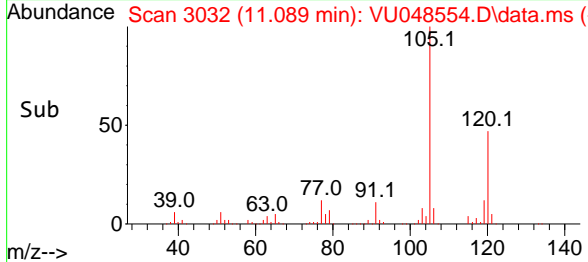
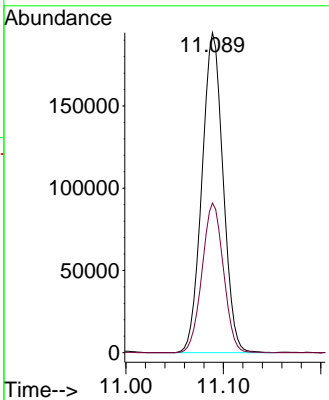
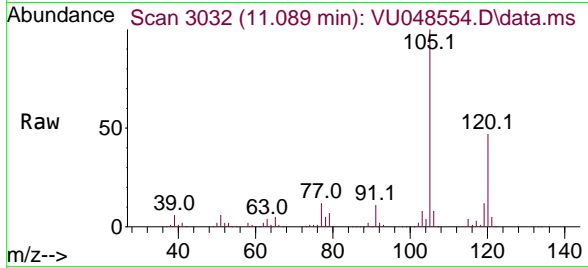




#62
 1,3,5-Trimethylbenzene
 Concen: 48.403 ug/L
 RT: 11.089 min Scan# 3032
 Delta R.T. 0.000 min
 Lab File: VU048554.D
 Acq: 13 May 2022 10:03

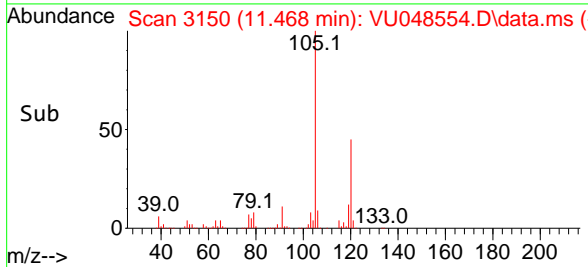
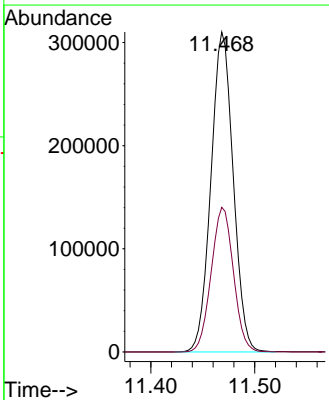
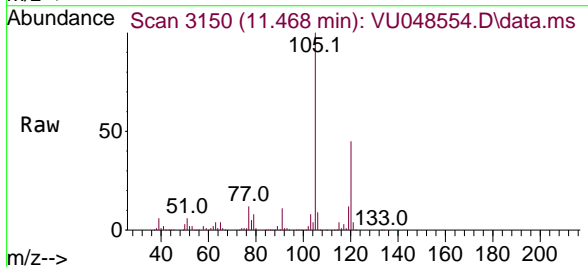
Instrument : MSVOA_U
 ClientSampleId : VSTD050126

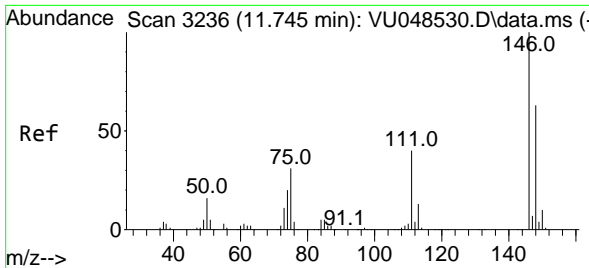
Tgt Ion:105 Resp: 292865
 Ion Ratio Lower Upper
 105 100
 120 47.3 38.5 57.7



#63
 1,2,4-Trimethylbenzene
 Concen: 51.259 ug/L
 RT: 11.468 min Scan# 3150
 Delta R.T. 0.000 min
 Lab File: VU048554.D
 Acq: 13 May 2022 10:03

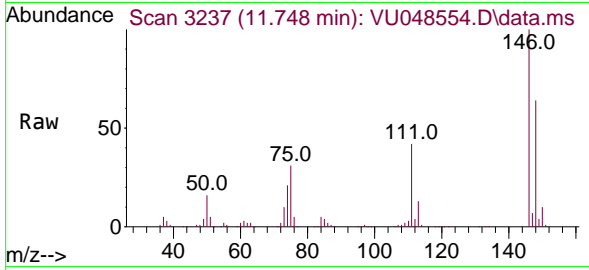
Tgt Ion:105 Resp: 461885
 Ion Ratio Lower Upper
 105 100
 120 45.2 35.4 53.2



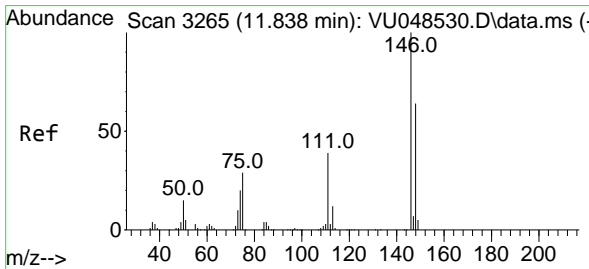
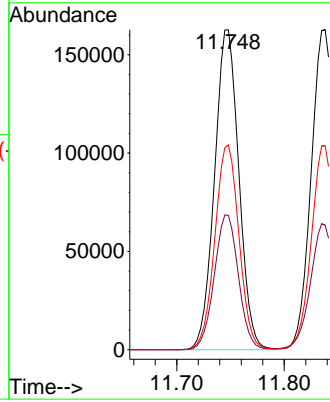
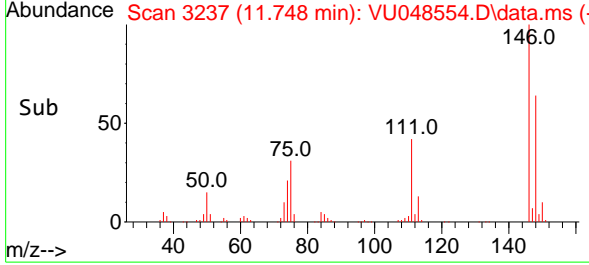


#64
 1,3-Dichlorobenzene
 Concen: 49.421 ug/L
 RT: 11.748 min Scan# 31
 Delta R.T. 0.003 min
 Lab File: VU048554.D
 Acq: 13 May 2022 10:03

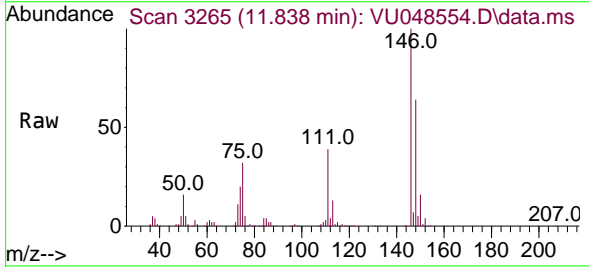
Instrument :
 MSVOA_U
 ClientSampleId :
 VSTD050126



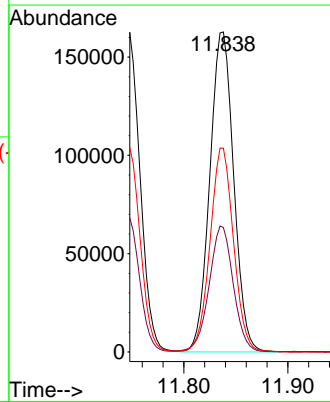
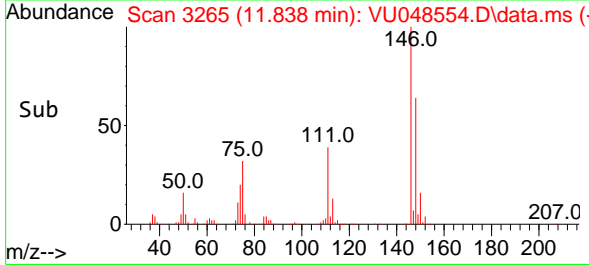
Tgt Ion:146 Resp: 255832
 Ion Ratio Lower Upper
 146 100
 111 42.0 28.3 52.7
 148 64.0 44.7 83.1

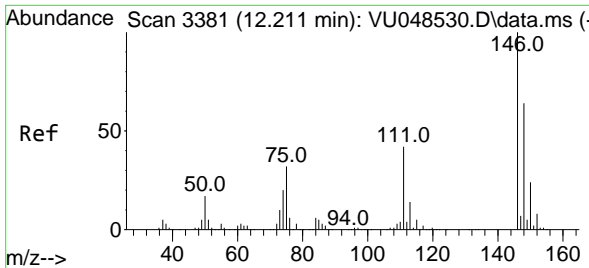


#65
 1,4-Dichlorobenzene
 Concen: 50.056 ug/L
 RT: 11.838 min Scan# 3265
 Delta R.T. 0.000 min
 Lab File: VU048554.D
 Acq: 13 May 2022 10:03



Tgt Ion:146 Resp: 259790
 Ion Ratio Lower Upper
 146 100
 111 38.9 28.4 52.8
 148 63.7 43.4 80.6

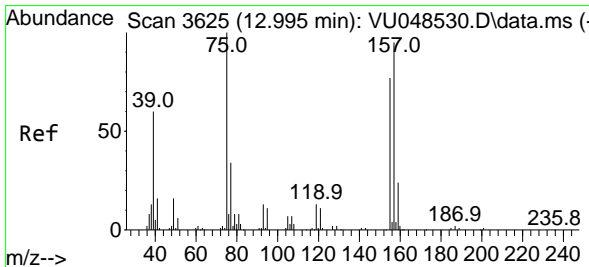
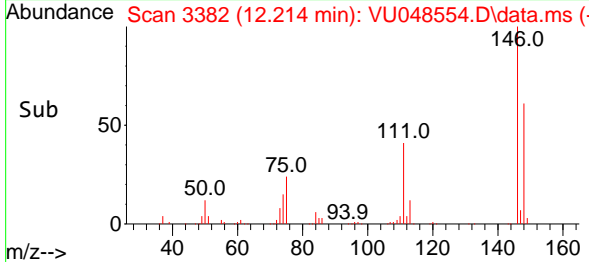
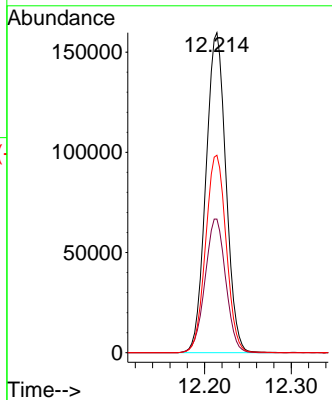
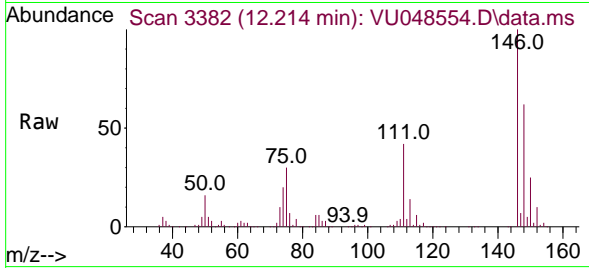




#67
 1,2-Dichlorobenzene
 Concen: 48.507 ug/L
 RT: 12.214 min Scan# 3111
 Delta R.T. 0.003 min
 Lab File: VU048554.D
 Acq: 13 May 2022 10:03

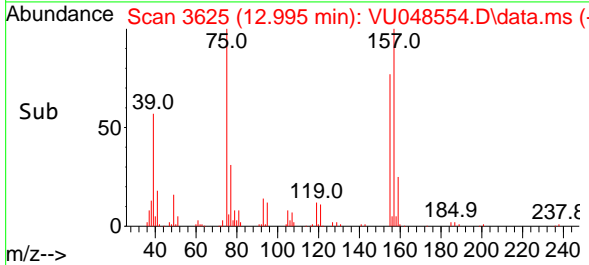
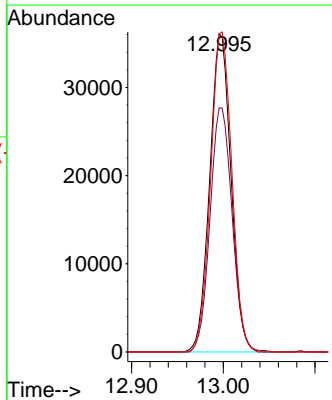
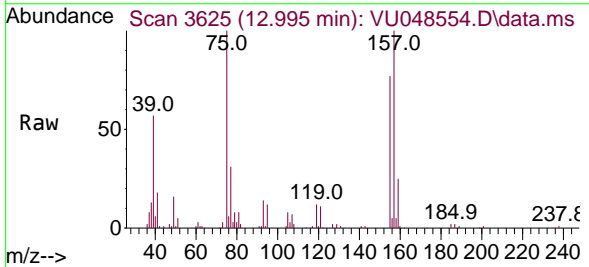
Instrument :
 MSVOA_U
 ClientSampleId :
 VSTD050126

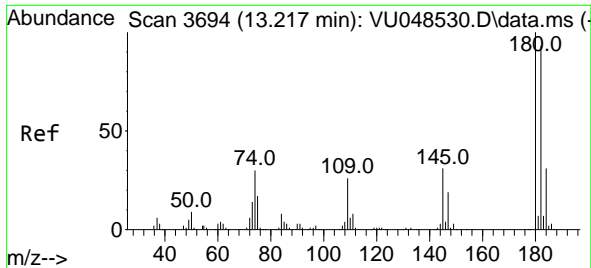
Tgt Ion:146 Resp: 256963
 Ion Ratio Lower Upper
 146 100
 111 41.8 34.9 52.3
 148 61.7 50.8 76.2



#68
 1,2-Dibromo-3-chloropropane
 Concen: 48.767 ug/L
 RT: 12.995 min Scan# 3625
 Delta R.T. 0.000 min
 Lab File: VU048554.D
 Acq: 13 May 2022 10:03

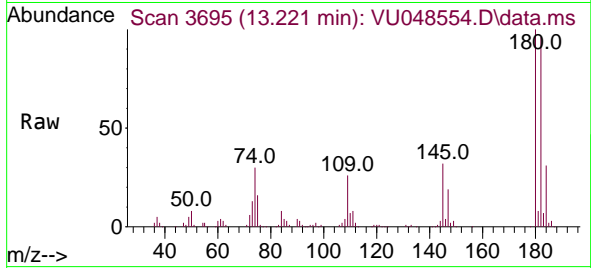
Tgt Ion: 75 Resp: 58442
 Ion Ratio Lower Upper
 75 100
 155 76.7 63.4 95.0
 157 99.9 82.2 123.2



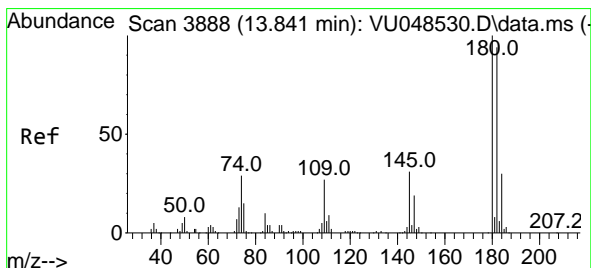
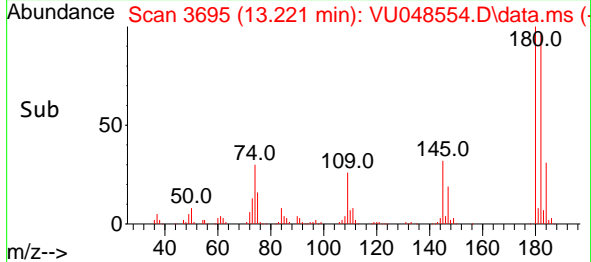
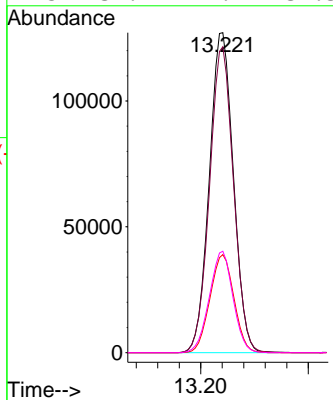


#69
 1,3,5-Trichlorobenzene
 Concen: 53.920 ug/L
 RT: 13.221 min Scan# 3695
 Delta R.T. 0.003 min
 Lab File: VU048554.D
 Acq: 13 May 2022 10:03

Instrument :
 MSVOA_U
 ClientSampleId :
 VSTD050126

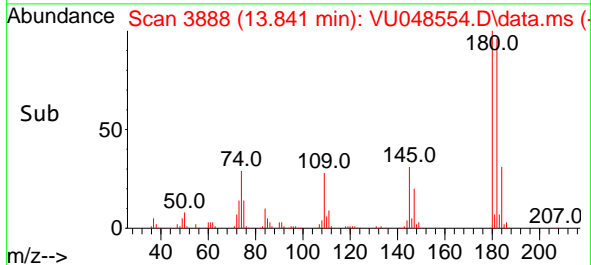
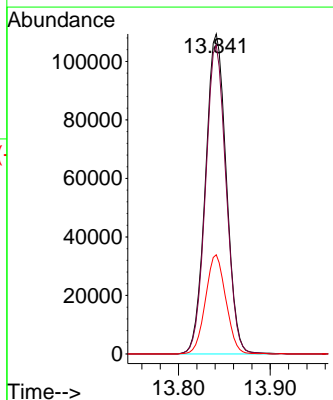
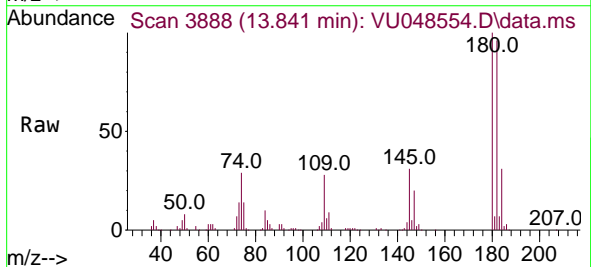


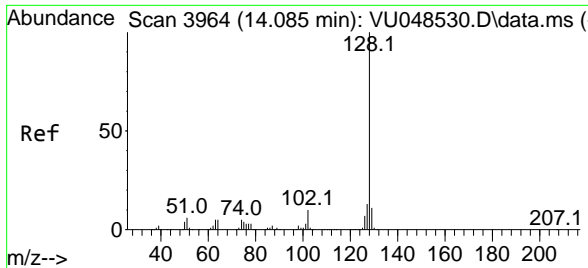
Tgt Ion:180 Resp: 197354
 Ion Ratio Lower Upper
 180 100
 182 95.2 75.7 113.5
 184 30.5 23.8 35.8
 145 31.2 24.9 37.3



#70
 1,2,4-trichlorobenzene
 Concen: 54.398 ug/L
 RT: 13.841 min Scan# 3888
 Delta R.T. 0.000 min
 Lab File: VU048554.D
 Acq: 13 May 2022 10:03

Tgt Ion:180 Resp: 172908
 Ion Ratio Lower Upper
 180 100
 182 95.0 77.1 115.7
 145 30.3 24.9 37.3

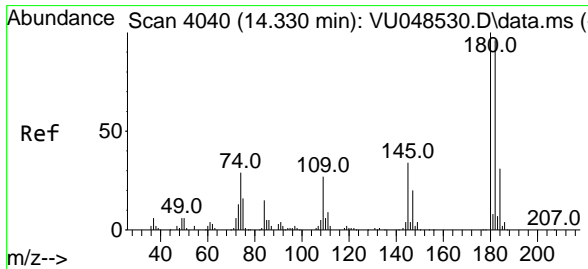
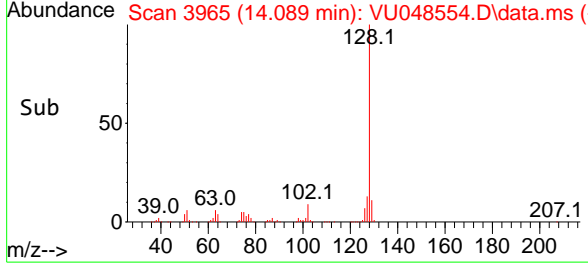
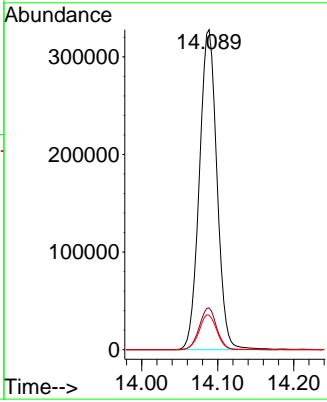
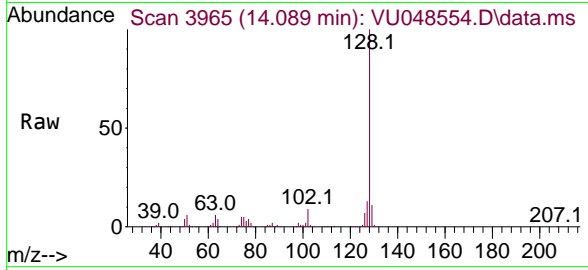




#71
 Naphthalene
 Concen: 42.967 ug/L
 RT: 14.089 min Scan# 3965
 Delta R.T. 0.003 min
 Lab File: VU048554.D
 Acq: 13 May 2022 10:03

Instrument : MSVOA_U
 ClientSampleId : VSTD050126

Tgt Ion	Resp	Lower	Upper
128	525936	100	100
127	12.9	10.5	15.7
129	11.0	8.8	13.2



#72
 1,2,3-Trichlorobenzene
 Concen: 51.301 ug/L
 RT: 14.330 min Scan# 4040
 Delta R.T. 0.000 min
 Lab File: VU048554.D
 Acq: 13 May 2022 10:03

Tgt Ion	Resp	Lower	Upper
180	173428	100	100
182	95.0	75.4	113.2
145	33.7	26.4	39.6

