

Data Path : Z:\VOASRV\HPCHEM1\MSVOA U\DATA\VU051419\
 Data File : VU031989.D
 Acq On : 14 May 2019 13:09
 Operator : JC/SP
 Sample : VU0514MBL01
 Misc : 5.00µ/5mL/100uL/5.0mL/MSVOA_U/MEOH
 ALS Vial : 9 Sample Multiplier: 1

Instrument :
 MSVOA_U
 ClientSampled :
 VBLK36

Integration Parameters: LSCINT.P

Integrator: RTE
 Smoothing : OFF
 Sampling : 1
 Start Thrs: 0.2
 Stop Thrs : 0

Filtering: 5
 Min Area: 0 % of largest Peak
 Max Peaks: 100
 Peak Location: TOP

If leading or trailing edge < 100 prefer < Baseline drop else tangent >
 Peak separation: 5

Method : Z:\VOASRV\HPCHEM1\MSVOA_U\METHOD\SOMULM051419WMA.M
 Title : VOC Analysis

Signal : TIC

| peak # | R.T. min | first scan | max scan | last scan | PK TY | peak height | corr. area | corr. % max. | % of total |
|--------|----------|------------|----------|-----------|-------|-------------|------------|--------------|------------|
| 1 | 1.183 | 25 | 29 | 40 | rVB3 | 16030 | 15165 | 0.33% | 0.045% |
| 2 | 1.399 | 88 | 96 | 108 | rBV | 671116 | 708536 | 15.64% | 2.098% |
| 3 | 1.679 | 175 | 183 | 200 | rVB | 503997 | 655483 | 14.46% | 1.941% |
| 4 | 2.270 | 356 | 367 | 381 | rVB | 1046011 | 1602800 | 35.37% | 4.746% |
| 5 | 2.476 | 425 | 431 | 441 | rVB | 10769 | 15780 | 0.35% | 0.047% |
| 6 | 2.572 | 459 | 461 | 464 | rBV4 | 916 | 584 | 0.01% | 0.002% |
| 7 | 2.643 | 480 | 483 | 490 | rVB6 | 1825 | 1970 | 0.04% | 0.006% |
| 8 | 2.701 | 494 | 501 | 502 | rBV6 | 2505 | 2916 | 0.06% | 0.009% |
| 9 | 2.833 | 537 | 542 | 548 | rBV5 | 1396 | 1779 | 0.04% | 0.005% |
| 10 | 2.936 | 571 | 574 | 578 | rVB3 | 1297 | 768 | 0.02% | 0.002% |
| 11 | 2.987 | 578 | 590 | 601 | rBV8 | 4467 | 10574 | 0.23% | 0.031% |
| 12 | 3.042 | 604 | 607 | 614 | rBV6 | 1009 | 979 | 0.02% | 0.003% |
| 13 | 3.074 | 614 | 617 | 619 | rBV2 | 914 | 659 | 0.01% | 0.002% |
| 14 | 3.116 | 627 | 630 | 633 | rBV3 | 1044 | 769 | 0.02% | 0.002% |
| 15 | 3.360 | 702 | 706 | 709 | rBV4 | 791 | 831 | 0.02% | 0.002% |
| 16 | 3.379 | 709 | 712 | 715 | rVV3 | 1137 | 1031 | 0.02% | 0.003% |
| 17 | 3.441 | 729 | 731 | 735 | rVV3 | 1199 | 946 | 0.02% | 0.003% |
| 18 | 3.576 | 769 | 773 | 777 | rVB3 | 838 | 694 | 0.02% | 0.002% |
| 19 | 3.691 | 805 | 809 | 814 | rBV4 | 662 | 770 | 0.02% | 0.002% |
| 20 | 3.855 | 856 | 860 | 865 | rVB4 | 976 | 902 | 0.02% | 0.003% |
| 21 | 4.055 | 917 | 922 | 925 | rBV2 | 1165 | 1003 | 0.02% | 0.003% |
| 22 | 4.074 | 925 | 928 | 933 | rVB3 | 815 | 589 | 0.01% | 0.002% |
| 23 | 4.129 | 940 | 945 | 946 | rBV2 | 814 | 602 | 0.01% | 0.002% |
| 24 | 4.170 | 946 | 958 | 991 | rBV | 404659 | 1087144 | 23.99% | 3.219% |
| 25 | 4.643 | 1088 | 1105 | 1138 | rBV | 732333 | 1729565 | 38.17% | 5.121% |
| 26 | 4.955 | 1199 | 1202 | 1205 | rBV5 | 1086 | 883 | 0.02% | 0.003% |
| 27 | 4.990 | 1210 | 1213 | 1221 | rVB8 | 3448 | 4127 | 0.09% | 0.012% |
| 28 | 5.077 | 1237 | 1240 | 1242 | rBV2 | 947 | 590 | 0.01% | 0.002% |
| 29 | 5.122 | 1251 | 1254 | 1256 | rBV3 | 947 | 631 | 0.01% | 0.002% |
| 30 | 5.206 | 1275 | 1280 | 1283 | rBV4 | 1637 | 1612 | 0.04% | 0.005% |
| 31 | 5.334 | 1296 | 1320 | 1354 | rBV2 | 1507655 | 4531615 | 100.00% | 13.419% |
| 32 | 5.743 | 1444 | 1447 | 1450 | rBV4 | 1425 | 1311 | 0.03% | 0.004% |
| 33 | 5.881 | 1476 | 1490 | 1534 | rBV | 1254035 | 2586786 | 57.08% | 7.660% |
| 34 | 6.190 | 1575 | 1586 | 1594 | rVB | 9364 | 19993 | 0.44% | 0.059% |

Data Path : Z:\VOASRV\HPCHEM1\MSVOA U\DATA\VU051419\
 Data File : VU031989.D
 Acq On : 14 May 2019 13:09
 Operator : JC/SP
 Sample : VU0514MBL01
 Misc : 5.00µ/5mL/100uL/5.0mL/MSVOA_U/MEOH
 ALS Vial : 9 Sample Multiplier: 1

Instrument :
 MSVOA_U
 ClientSampleId :
 VBLK36

Integration Parameters: LSCINT.P

Integrator: RTE
 Smoothing : OFF
 Sampling : 1
 Start Thrs: 0.2
 Stop Thrs : 0

Filtering: 5
 Min Area: 0 % of largest Peak
 Max Peaks: 100
 Peak Location: TOP

If leading or trailing edge < 100 prefer < Baseline drop else tangent >
 Peak separation: 5

Method : Z:\VOASRV\HPCHEM1\MSVOA_U\METHOD\SOMULM051419WMA.M
 Title : VOC Analysis

| | | | | | | | | | |
|----|-------|------|------|------|------|---------|---------|--------|---------|
| 35 | 6.325 | 1614 | 1628 | 1650 | rBV | 996016 | 2022325 | 44.63% | 5.988% |
| 36 | 6.669 | 1734 | 1735 | 1740 | rVB3 | 1683 | 994 | 0.02% | 0.003% |
| 37 | 6.746 | 1755 | 1759 | 1760 | rVV2 | 882 | 641 | 0.01% | 0.002% |
| 38 | 6.765 | 1760 | 1765 | 1769 | rVV6 | 1183 | 1287 | 0.03% | 0.004% |
| 39 | 6.810 | 1773 | 1779 | 1782 | rBV3 | 1098 | 889 | 0.02% | 0.003% |
| 40 | 6.842 | 1787 | 1789 | 1793 | rVB2 | 1054 | 672 | 0.01% | 0.002% |
| 41 | 6.874 | 1797 | 1799 | 1802 | rVB3 | 1101 | 692 | 0.02% | 0.002% |
| 42 | 6.897 | 1802 | 1806 | 1810 | rBV4 | 1180 | 1209 | 0.03% | 0.004% |
| 43 | 6.919 | 1810 | 1813 | 1817 | rVB4 | 1314 | 926 | 0.02% | 0.003% |
| 44 | 6.955 | 1821 | 1824 | 1830 | rVB3 | 871 | 829 | 0.02% | 0.002% |
| 45 | 6.993 | 1830 | 1836 | 1843 | rBV6 | 1059 | 1492 | 0.03% | 0.004% |
| 46 | 7.026 | 1843 | 1846 | 1849 | rVV2 | 1253 | 903 | 0.02% | 0.003% |
| 47 | 7.071 | 1858 | 1860 | 1868 | rVB5 | 846 | 910 | 0.02% | 0.003% |
| 48 | 7.225 | 1895 | 1908 | 1937 | rBV | 523576 | 989122 | 21.83% | 2.929% |
| 49 | 7.463 | 1976 | 1982 | 1994 | rVB3 | 8745 | 15219 | 0.34% | 0.045% |
| 50 | 7.563 | 1999 | 2013 | 2064 | rBV | 1920668 | 3602231 | 79.49% | 10.667% |
| 51 | 7.846 | 2091 | 2101 | 2130 | rBV | 357116 | 652833 | 14.41% | 1.933% |
| 52 | 8.064 | 2165 | 2169 | 2174 | rBV6 | 1468 | 1607 | 0.04% | 0.005% |
| 53 | 8.225 | 2212 | 2219 | 2221 | rBV5 | 3797 | 4340 | 0.10% | 0.013% |
| 54 | 8.309 | 2233 | 2245 | 2285 | rBV | 1167309 | 2260197 | 49.88% | 6.693% |
| 55 | 8.784 | 2390 | 2393 | 2396 | rBV2 | 1488 | 963 | 0.02% | 0.003% |
| 56 | 8.804 | 2397 | 2399 | 2404 | rBV4 | 1025 | 778 | 0.02% | 0.002% |
| 57 | 8.929 | 2433 | 2438 | 2440 | rBV5 | 938 | 888 | 0.02% | 0.003% |
| 58 | 8.964 | 2447 | 2449 | 2452 | rVV2 | 1574 | 750 | 0.02% | 0.002% |
| 59 | 9.019 | 2461 | 2466 | 2467 | rBV4 | 793 | 687 | 0.02% | 0.002% |
| 60 | 9.087 | 2473 | 2487 | 2532 | rBV | 1818654 | 3245777 | 71.63% | 9.611% |
| 61 | 9.315 | 2556 | 2558 | 2561 | rVB4 | 1299 | 745 | 0.02% | 0.002% |
| 62 | 9.334 | 2561 | 2564 | 2570 | rBV5 | 1151 | 1069 | 0.02% | 0.003% |
| 63 | 9.460 | 2599 | 2603 | 2606 | rBV5 | 1322 | 1157 | 0.03% | 0.003% |
| 64 | 9.498 | 2612 | 2615 | 2622 | rVB6 | 1151 | 999 | 0.02% | 0.003% |
| 65 | 9.585 | 2637 | 2642 | 2650 | rBV6 | 1522 | 1890 | 0.04% | 0.006% |
| 66 | 9.630 | 2652 | 2656 | 2658 | rVV3 | 1096 | 866 | 0.02% | 0.003% |
| 67 | 9.646 | 2658 | 2661 | 2663 | rVV | 853 | 543 | 0.01% | 0.002% |
| 68 | 9.669 | 2664 | 2668 | 2670 | rVB3 | 748 | 566 | 0.01% | 0.002% |
| 69 | 9.784 | 2697 | 2704 | 2706 | rBV6 | 4811 | 5907 | 0.13% | 0.017% |
| 70 | 9.865 | 2727 | 2729 | 2732 | rVB3 | 1156 | 556 | 0.01% | 0.002% |
| 71 | 9.903 | 2738 | 2741 | 2745 | rBV4 | 984 | 720 | 0.02% | 0.002% |

Data Path : Z:\VOASRV\HPCHEM1\MSVOA U\DATA\VU051419\
 Data File : VU031989.D
 Acq On : 14 May 2019 13:09
 Operator : JC/SP
 Sample : VU0514MBL01
 Misc : 5.00µ/5mL/100uL/5.0mL/MSVOA_U/MEOH
 ALS Vial : 9 Sample Multiplier: 1

Instrument :
 MSVOA_U
 ClientSampleId :
 VBLK36

Integration Parameters: LSCINT.P

Integrator: RTE
 Smoothing : OFF
 Sampling : 1
 Start Thrs: 0.2
 Stop Thrs : 0

Filtering: 5
 Min Area: 0 % of largest Peak
 Max Peaks: 100
 Peak Location: TOP

If leading or trailing edge < 100 prefer < Baseline drop else tangent >
 Peak separation: 5

Method : Z:\VOASRV\HPCHEM1\MSVOA_U\METHOD\SOMULM051419WMA.M
 Title : VOC Analysis

| | | | | | | | | | |
|-----|--------|------|------|------|------|---------|---------|--------|--------|
| 72 | 9.955 | 2754 | 2757 | 2759 | rBV2 | 1791 | 1257 | 0.03% | 0.004% |
| 73 | 10.038 | 2781 | 2783 | 2786 | rVB3 | 1192 | 580 | 0.01% | 0.002% |
| 74 | 10.141 | 2811 | 2815 | 2817 | rBV3 | 1351 | 885 | 0.02% | 0.003% |
| 75 | 10.164 | 2817 | 2822 | 2823 | rBV3 | 5914 | 4719 | 0.10% | 0.014% |
| 76 | 10.279 | 2855 | 2858 | 2864 | rBV4 | 1102 | 1179 | 0.03% | 0.003% |
| 77 | 10.427 | 2891 | 2904 | 2935 | rVV | 1348678 | 2217348 | 48.93% | 6.566% |
| 78 | 10.540 | 2935 | 2939 | 2943 | rVV3 | 1730 | 1537 | 0.03% | 0.005% |
| 79 | 10.575 | 2947 | 2950 | 2955 | rVB3 | 1145 | 1030 | 0.02% | 0.003% |
| 80 | 10.691 | 2984 | 2986 | 2993 | rVB3 | 1688 | 1395 | 0.03% | 0.004% |
| 81 | 10.775 | 3005 | 3012 | 3018 | rBV5 | 1344 | 1318 | 0.03% | 0.004% |
| 82 | 10.829 | 3027 | 3029 | 3032 | rVB2 | 1407 | 730 | 0.02% | 0.002% |
| 83 | 10.868 | 3038 | 3041 | 3044 | rVB2 | 1133 | 882 | 0.02% | 0.003% |
| 84 | 10.968 | 3069 | 3072 | 3074 | rVV3 | 978 | 645 | 0.01% | 0.002% |
| 85 | 11.077 | 3102 | 3106 | 3114 | rVB5 | 2487 | 3051 | 0.07% | 0.009% |
| 86 | 11.424 | 3203 | 3214 | 3219 | rBV4 | 11707 | 20060 | 0.44% | 0.059% |
| 87 | 11.479 | 3220 | 3231 | 3263 | rVV | 1601453 | 2642481 | 58.31% | 7.825% |
| 88 | 11.855 | 3335 | 3348 | 3374 | rBV | 1714161 | 2912873 | 64.28% | 8.625% |
| 89 | 12.469 | 3532 | 3539 | 3540 | rBV3 | 1598 | 1431 | 0.03% | 0.004% |
| 90 | 12.591 | 3575 | 3577 | 3582 | rVB4 | 1174 | 644 | 0.01% | 0.002% |
| 91 | 12.758 | 3626 | 3629 | 3631 | rBV2 | 1085 | 697 | 0.02% | 0.002% |
| 92 | 12.897 | 3662 | 3672 | 3687 | rBV8 | 12640 | 29082 | 0.64% | 0.086% |
| 93 | 13.025 | 3709 | 3712 | 3716 | rBV4 | 1282 | 1172 | 0.03% | 0.003% |
| 94 | 13.238 | 3773 | 3778 | 3781 | rBV4 | 1201 | 1333 | 0.03% | 0.004% |
| 95 | 13.331 | 3804 | 3807 | 3810 | rBV3 | 1163 | 988 | 0.02% | 0.003% |
| 96 | 13.514 | 3857 | 3864 | 3878 | rBV8 | 14654 | 31939 | 0.70% | 0.095% |
| 97 | 13.758 | 3930 | 3940 | 3943 | rBV | 18037 | 26567 | 0.59% | 0.079% |
| 98 | 13.996 | 4005 | 4014 | 4028 | rBV7 | 19155 | 48489 | 1.07% | 0.144% |
| 99 | 14.144 | 4058 | 4060 | 4064 | rVB3 | 1989 | 1135 | 0.03% | 0.003% |
| 100 | 14.295 | 4105 | 4107 | 4109 | rBV | 1150 | 672 | 0.01% | 0.002% |

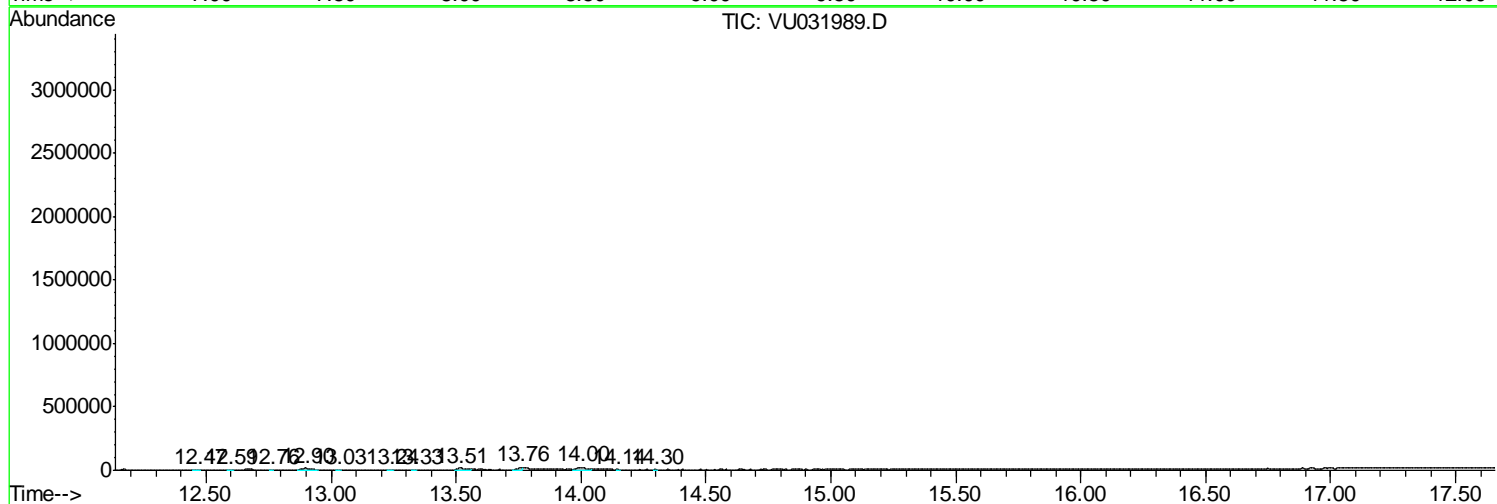
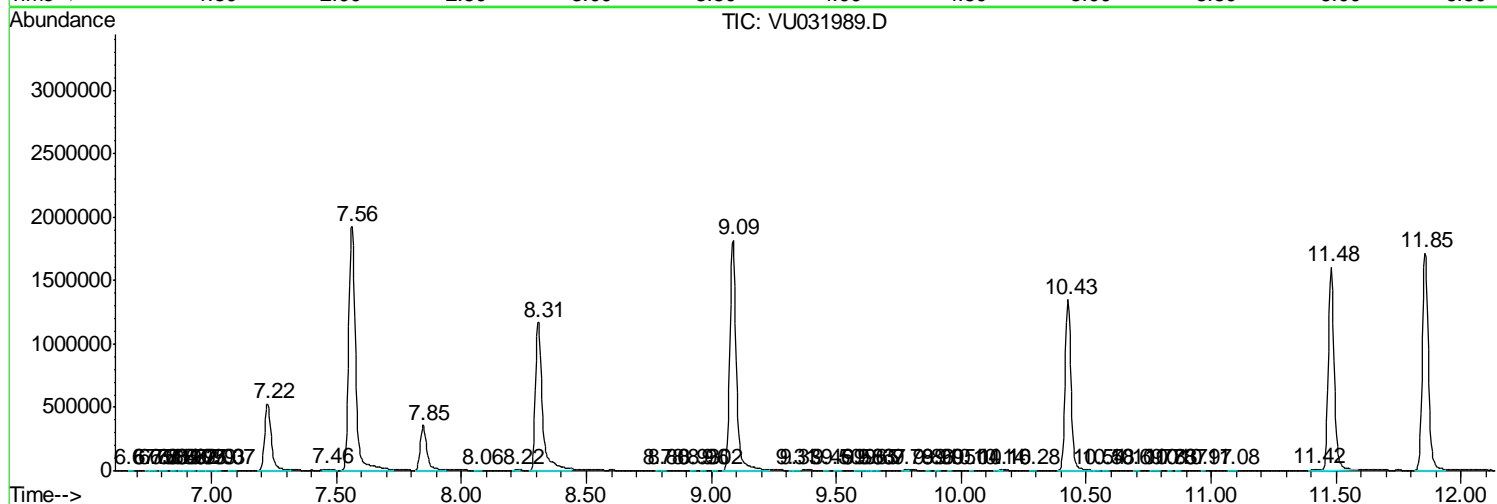
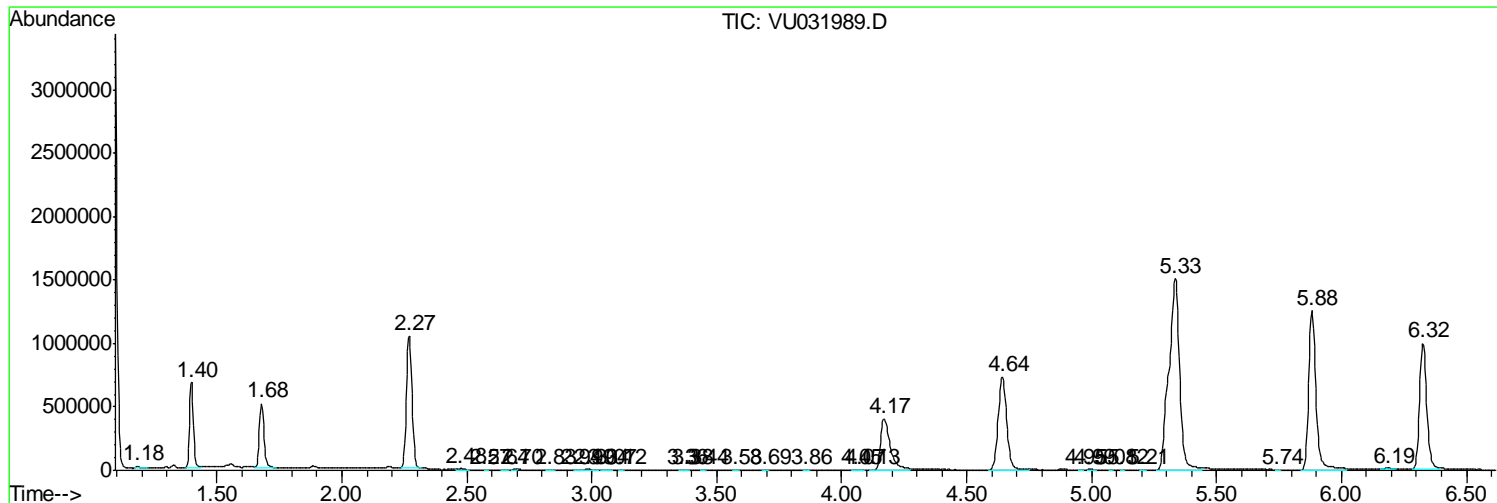
Sum of corrected areas: 33770685

Data Path : Z:\VOASRV\HPCHEM1\MSVOA U\DATA\VU051419\
 Data File : VU031989.D
 Acq On : 14 May 2019 13:09
 Operator : JC/SP
 Sample : VU0514MBL01
 Misc : 5.00µ/5mL/100uL/5.0mL/MSVOA_U/MEOH
 ALS Vial : 9 Sample Multiplier: 1

Instrument :
 MSVOA_U
 ClientSampleId :
 VBLK36

Quant Method : Z:\VOASRV\HPCHEM1\MSVOA_U\METHOD\SOMULM051419WMA.M
 Quant Title : VOC Analysis

TIC Library : C:\DATABASE\NIST11.L
 TIC Integration Parameters: LSCINT.P



Data Path : Z:\VOASRV\HPCHEM1\MSVOA_U\DATA\VU051419\
Data File : VU031989.D
Acq On : 14 May 2019 13:09
Operator : JC/SP
Sample : VU0514MBL01
Misc : 5.00g/5mL/100uL/5.0mL/MSVOA_U/MEOH
ALS Vial : 9 Sample Multiplier: 1

Instrument :
MSVOA_U
ClientSampleId :
VBLK36

Quant Method : Z:\VOASRV\HPCHEM1\MSVOA_U\METHOD\SOMULM051419WMA.M
Quant Title : VOC Analysis

TIC Library : C:\DATABASE\NIST11.L
TIC Integration Parameters: LSCINT.P

No Library Search Compounds Detected

Data Path : Z:\VOASRV\HPCHEM1\MSVOA_U\DATA\VU051419\
Data File : VU031989.D
Acq On : 14 May 2019 13:09
Operator : JC/SP
Sample : VU0514MBL01
Misc : 5.00g/5mL/100uL/5.0mL/MSVOA_U/MEOH
ALS Vial : 9 Sample Multiplier: 1

Instrument :
MSVOA_U
ClientSampleId :
VBLK36

Quant Method : Z:\VOASRV\HPCHEM1\MSVOA_U\METHOD\SOMULM051419WMA.M
Quant Title : VOC Analysis

TIC Library : C:\DATABASE\NIST11.L
TIC Integration Parameters: LSCINT.P

| TIC Top Hit name | RT | EstConc | Units | Response | --Internal Standard-- | | | |
|------------------|----|---------|-------|----------|-----------------------|----|------|------|
| | | | | | # | RT | Resp | Conc |
