

Data Path : Z:\VOASRV\HPCHEM1\MSVOA U\DATA\VU051419\
 Data File : VU031997.D
 Acq On : 14 May 2019 16:15
 Operator : JC/SP
 Sample : K2738-04
 Misc : 5.0mL/MSVOA U/WATER
 ALS Vial : 17 Sample Multiplier: 1

Instrument :
 MSVOA_U
 ClientSampleId :
 DB883

Integration Parameters: LSCINT.P

Integrator: RTE
 Smoothing : OFF
 Sampling : 1
 Start Thrs: 0.2
 Stop Thrs : 0

Filtering: 5
 Min Area: 0 % of largest Peak
 Max Peaks: 100
 Peak Location: TOP

If leading or trailing edge < 100 prefer < Baseline drop else tangent >
 Peak separation: 5

Method : Z:\VOASRV\HPCHEM1\MSVOA_U\METHOD\SOMULM051419WMA.M
 Title : VOC Analysis

Signal : TIC

peak #	R.T. min	first scan	max scan	last scan	PK TY	peak height	corr. area	corr. % max.	% of total
1	1.180	24	28	36	rVB3	17621	16202	0.37%	0.051%
2	1.399	89	96	109	rBV	635400	668010	15.40%	2.089%
3	1.672	173	181	205	rVB	481560	642905	14.82%	2.010%
4	2.267	356	366	378	rBV	999829	1510190	34.82%	4.722%
5	2.447	414	422	441	rVB2	15387	35840	0.83%	0.112%
6	2.550	450	454	457	rBV5	1523	1467	0.03%	0.005%
7	2.640	478	482	486	rBV5	878	809	0.02%	0.003%
8	2.695	492	499	500	rBV6	3134	3023	0.07%	0.009%
9	2.801	529	532	534	rBV2	1430	825	0.02%	0.003%
10	2.830	534	541	553	rVB3	5516	10313	0.24%	0.032%
11	2.929	568	572	578	rBV6	816	1007	0.02%	0.003%
12	3.010	594	597	600	rVB2	1248	731	0.02%	0.002%
13	3.029	600	603	605	rBV4	1088	739	0.02%	0.002%
14	3.122	628	632	637	rVB4	1322	1082	0.02%	0.003%
15	3.341	696	700	703	rBV2	1157	872	0.02%	0.003%
16	3.386	710	714	720	rVB4	1384	1308	0.03%	0.004%
17	3.421	721	725	727	rBV2	888	573	0.01%	0.002%
18	3.572	767	772	776	rVB3	779	582	0.01%	0.002%
19	3.678	799	805	808	rVB3	946	798	0.02%	0.002%
20	3.740	819	824	829	rBV4	1039	1339	0.03%	0.004%
21	3.994	899	903	910	rVB5	910	1014	0.02%	0.003%
22	4.170	945	958	990	rBV	372761	1010440	23.30%	3.160%
23	4.550	1074	1076	1081	rVB4	1234	1079	0.02%	0.003%
24	4.643	1086	1105	1135	rBV	698864	1667923	38.46%	5.215%
25	4.836	1162	1165	1167	rBV3	1387	853	0.02%	0.003%
26	4.981	1208	1210	1214	rVV3	1200	844	0.02%	0.003%
27	5.006	1216	1218	1222	rVB5	1566	1110	0.03%	0.003%
28	5.225	1283	1286	1290	rVB3	939	681	0.02%	0.002%
29	5.334	1297	1320	1349	rBV2	1453773	4337243	100.00%	13.562%
30	5.743	1445	1447	1450	rBV4	839	596	0.01%	0.002%
31	5.881	1477	1490	1540	rBV	1216429	2532986	58.40%	7.920%
32	6.174	1573	1581	1594	rVB5	17226	33423	0.77%	0.105%
33	6.325	1613	1628	1657	rBV	958259	1956119	45.10%	6.117%
34	6.582	1705	1708	1710	rBV3	1735	1143	0.03%	0.004%

Data Path : Z:\VOASRV\HPCHEM1\MSVOA U\DATA\VU051419\
 Data File : VU031997.D
 Acq On : 14 May 2019 16:15
 Operator : JC/SP
 Sample : K2738-04
 Misc : 5.0mL/MSVOA U/WATER
 ALS Vial : 17 Sample Multiplier: 1

Instrument :
 MSVOA_U
 ClientSampleId :
 DB883

Integration Parameters: LSCINT.P

Integrator: RTE
 Smoothing : OFF
 Sampling : 1
 Start Thrs: 0.2
 Stop Thrs : 0

Filtering: 5
 Min Area: 0 % of largest Peak
 Max Peaks: 100
 Peak Location: TOP

If leading or trailing edge < 100 prefer < Baseline drop else tangent >
 Peak separation: 5

Method : Z:\VOASRV\HPCHEM1\MSVOA_U\METHOD\SOMULM051419WMA.M
 Title : VOC Analysis

35	6.691	1740	1742	1745	rVB3	1270	684	0.02%	0.002%
36	6.765	1762	1765	1774	rVB6	1692	1798	0.04%	0.006%
37	6.958	1824	1825	1830	rVB3	1010	562	0.01%	0.002%
38	7.106	1868	1871	1874	rVB3	1243	947	0.02%	0.003%
39	7.132	1874	1879	1881	rBV2	1050	730	0.02%	0.002%
40	7.157	1884	1887	1890	rVB2	1103	660	0.02%	0.002%
41	7.225	1896	1908	1929	rBV	496377	904707	20.86%	2.829%
42	7.563	1999	2013	2034	rBV	1844416	3319263	76.53%	10.379%
43	7.845	2091	2101	2130	rBV	340565	599871	13.83%	1.876%
44	8.170	2189	2202	2212	rBV5	9040	18722	0.43%	0.059%
45	8.308	2233	2245	2286	rBV	1131578	2132783	49.17%	6.669%
46	8.591	2331	2333	2335	rBV3	1623	821	0.02%	0.003%
47	8.640	2346	2348	2354	rVB7	1728	1547	0.04%	0.005%
48	8.678	2357	2360	2363	rBV3	1286	1010	0.02%	0.003%
49	8.765	2383	2387	2393	rBV6	1714	1888	0.04%	0.006%
50	8.929	2435	2438	2441	rBV3	1320	973	0.02%	0.003%
51	8.945	2441	2443	2447	rVB2	969	703	0.02%	0.002%
52	8.964	2447	2449	2451	rBV2	1167	607	0.01%	0.002%
53	9.087	2473	2487	2532	rVV	1781375	3160485	72.87%	9.882%
54	9.379	2575	2578	2581	rBV3	1943	1464	0.03%	0.005%
55	9.431	2590	2594	2597	rBV3	804	593	0.01%	0.002%
56	9.530	2623	2625	2629	rVB4	1465	818	0.02%	0.003%
57	9.562	2633	2635	2641	rVV5	1068	877	0.02%	0.003%
58	9.652	2657	2663	2666	rBV5	1693	1635	0.04%	0.005%
59	9.688	2672	2674	2678	rVB3	1019	683	0.02%	0.002%
60	9.714	2678	2682	2686	rBV3	649	650	0.01%	0.002%
61	9.736	2686	2689	2694	rBV3	1265	1215	0.03%	0.004%
62	9.781	2697	2703	2706	rBV5	1952	1907	0.04%	0.006%
63	9.932	2748	2750	2754	rVB3	1282	762	0.02%	0.002%
64	10.160	2816	2821	2823	rBV5	2019	2007	0.05%	0.006%
65	10.334	2872	2875	2878	rBV3	1173	838	0.02%	0.003%
66	10.427	2891	2904	2934	rVV	1291643	2097571	48.36%	6.559%
67	10.604	2951	2959	2970	rVB5	8968	13146	0.30%	0.041%
68	10.919	3054	3057	3062	rBV3	961	912	0.02%	0.003%
69	11.083	3103	3108	3113	rVB5	1889	2091	0.05%	0.007%
70	11.144	3123	3127	3130	rVB3	1356	1075	0.02%	0.003%
71	11.177	3133	3137	3138	rBV	758	585	0.01%	0.002%

Data Path : Z:\VOASRV\HPCHEM1\MSVOA U\DATA\VU051419\
 Data File : VU031997.D
 Acq On : 14 May 2019 16:15
 Operator : JC/SP
 Sample : K2738-04
 Misc : 5.0mL/MSVOA U/WATER
 ALS Vial : 17 Sample Multiplier: 1

Instrument :
 MSVOA_U
 ClientSampleId :
 DB883

Integration Parameters: LSCINT.P

Integrator: RTE
 Smoothing : OFF
 Sampling : 1
 Start Thrs: 0.2
 Stop Thrs : 0

Filtering: 5
 Min Area: 0 % of largest Peak
 Max Peaks: 100
 Peak Location: TOP

If leading or trailing edge < 100 prefer < Baseline drop else tangent >
 Peak separation: 5

Method : Z:\VOASRV\HPCHEM1\MSVOA_U\METHOD\SOMULM051419WMA.M
 Title : VOC Analysis

72	11.193	3138	3142	3147	rVB3	1192	1152	0.03%	0.004%
73	11.234	3152	3155	3159	rBV3	900	678	0.02%	0.002%
74	11.315	3178	3180	3185	rVB	1313	926	0.02%	0.003%
75	11.386	3200	3202	3205	rBV2	853	579	0.01%	0.002%
76	11.479	3219	3231	3251	rBV	1531542	2496922	57.57%	7.808%
77	11.855	3334	3348	3372	rBV	1604917	2722716	62.78%	8.514%
78	12.295	3481	3485	3487	rBV4	1146	779	0.02%	0.002%
79	12.312	3487	3490	3496	rVB5	1853	2256	0.05%	0.007%
80	12.340	3496	3499	3500	rBV3	1794	1073	0.02%	0.003%
81	12.469	3535	3539	3546	rBV4	3535	4114	0.09%	0.013%
82	12.559	3564	3567	3569	rBV3	1135	671	0.02%	0.002%
83	12.578	3570	3573	3576	rVV3	1327	926	0.02%	0.003%
84	12.643	3591	3593	3596	rBV2	937	660	0.02%	0.002%
85	12.710	3611	3614	3618	rBV3	1491	1463	0.03%	0.005%
86	13.257	3781	3784	3786	rBV2	1177	693	0.02%	0.002%
87	13.463	3845	3848	3850	rBV	870	658	0.02%	0.002%
88	13.713	3923	3926	3929	rBV2	1047	753	0.02%	0.002%
89	13.784	3945	3948	3951	rBV2	1169	701	0.02%	0.002%
90	13.855	3968	3970	3972	rBV3	1022	577	0.01%	0.002%
91	14.019	4019	4021	4024	rBV3	1725	1071	0.02%	0.003%
92	14.234	4085	4088	4091	rBV2	1221	817	0.02%	0.003%
93	14.270	4097	4099	4103	rVB4	1470	877	0.02%	0.003%
94	14.292	4103	4106	4108	rBV3	917	705	0.02%	0.002%
95	14.517	4174	4176	4179	rBV2	1087	661	0.02%	0.002%
96	14.881	4283	4289	4292	rBV3	5109	5286	0.12%	0.017%
97	14.987	4319	4322	4330	rVB2	4239	4251	0.10%	0.013%
98	15.022	4330	4333	4336	rBV	2888	1934	0.04%	0.006%
99	15.109	4358	4360	4366	rVB	3673	2866	0.07%	0.009%
100	15.138	4366	4369	4374	rBV5	2893	2267	0.05%	0.007%

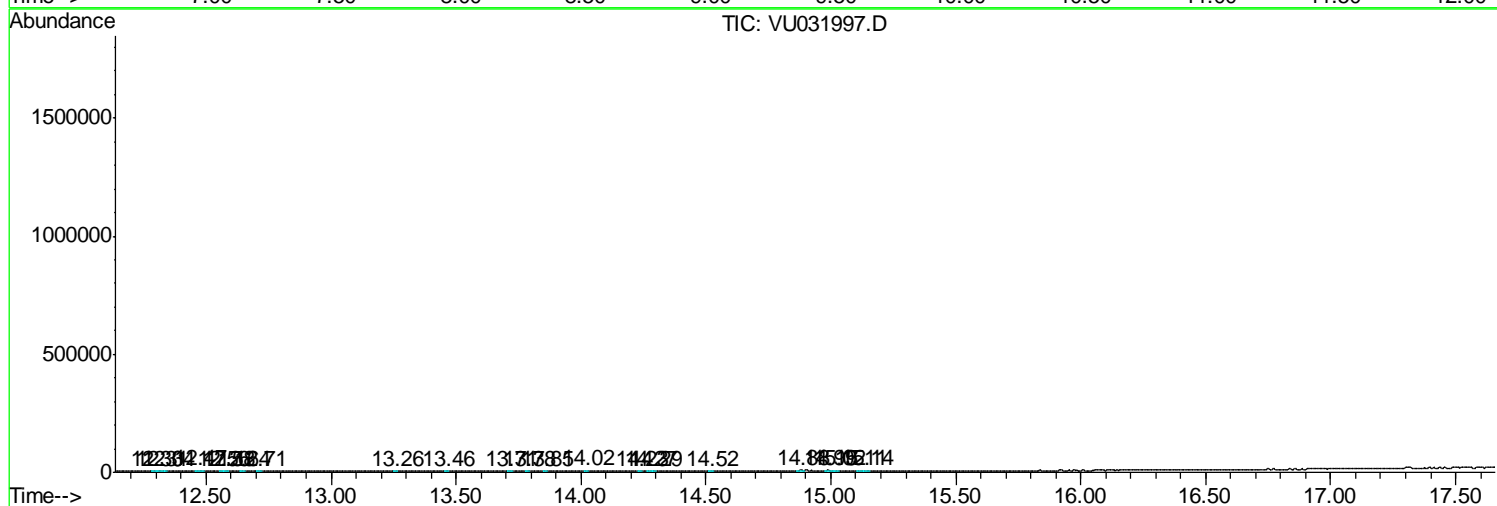
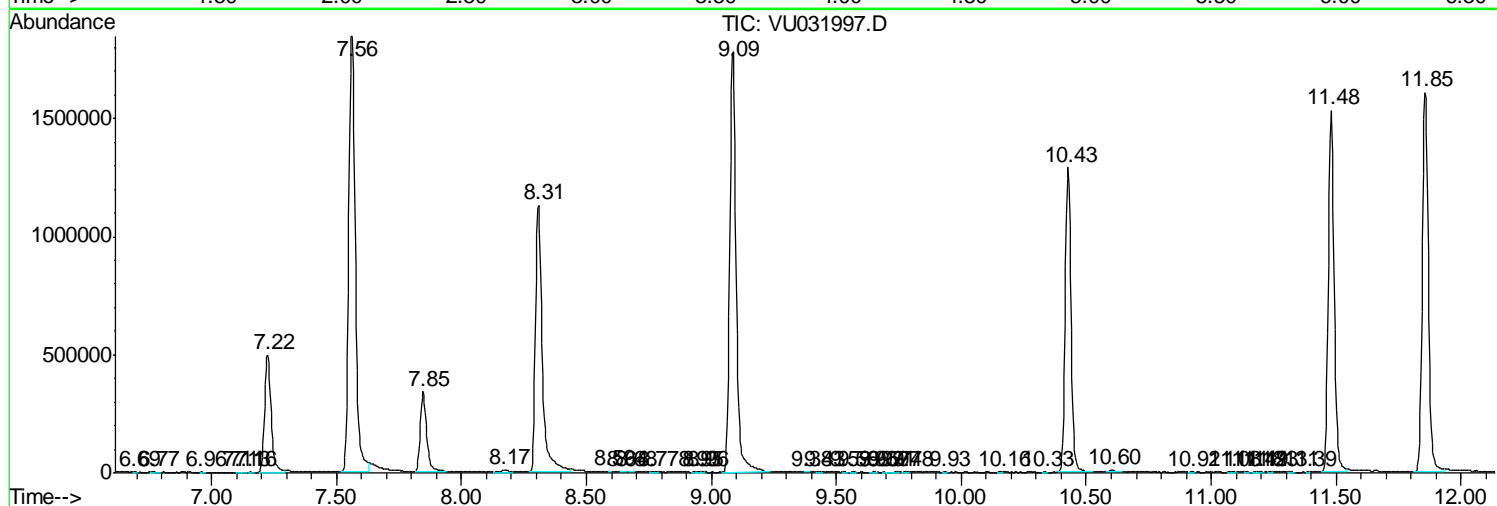
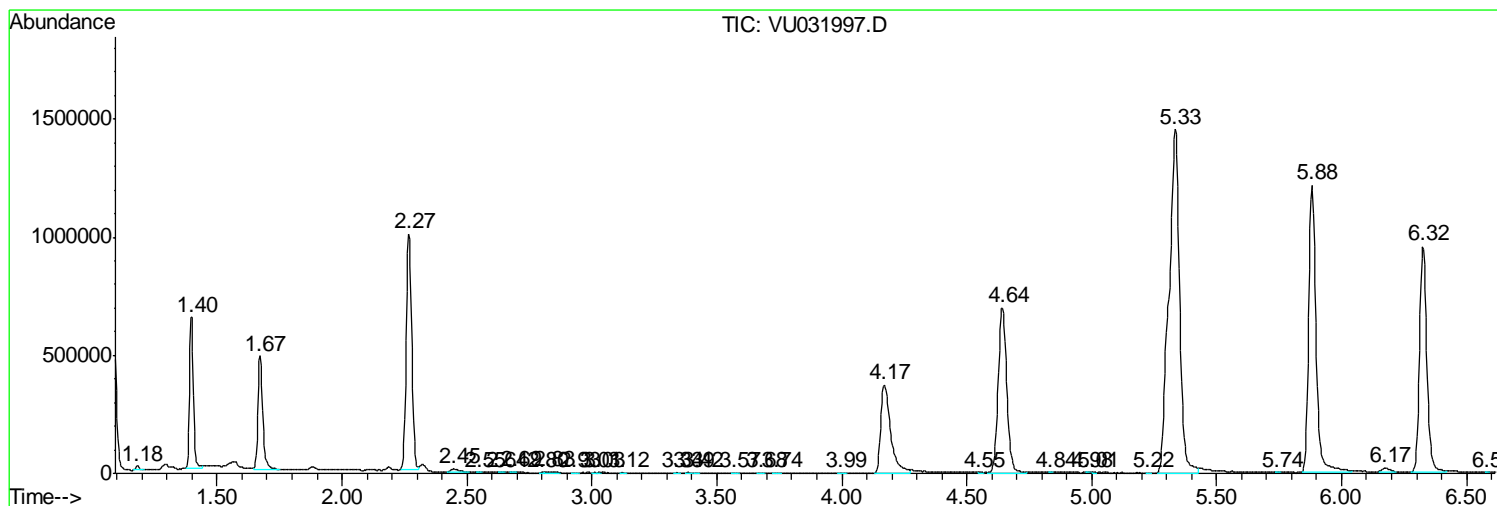
Sum of corrected areas: 31980691

Data Path : Z:\VOASRV\HPCHEM1\MSVOA U\DATA\VU051419\
 Data File : VU031997.D
 Acq On : 14 May 2019 16:15
 Operator : JC/SP
 Sample : K2738-04
 Misc : 5.0mL/MSVOA U/WATER
 ALS Vial : 17 Sample Multiplier: 1

Instrument :
 MSVOA_U
 ClientSampled :
 DB883

Quant Method : Z:\VOASRV\HPCHEM1\MSVOA_U\METHOD\SOMULM051419WMA.M
 Quant Title : VOC Analysis

TIC Library : C:\DATABASE\NIST11.L
 TIC Integration Parameters: LSCINT.P



Data Path : Z:\VOASRV\HPCHEM1\MSVOA_U\DATA\VU051419\
Data File : VU031997.D
Acq On : 14 May 2019 16:15
Operator : JC/SP
Sample : K2738-04
Misc : 5.0mL/MSVOA_U/WATER
ALS Vial : 17 Sample Multiplier: 1

Instrument :
MSVOA_U
ClientSampled :
DB883

Quant Method : Z:\VOASRV\HPCHEM1\MSVOA_U\METHOD\SOMULM051419WMA.M
Quant Title : VOC Analysis

TIC Library : C:\DATABASE\NIST11.L
TIC Integration Parameters: LSCINT.P

No Library Search Compounds Detected

Data Path : Z:\VOASRV\HPCHEM1\MSVOA_U\DATA\VU051419\
Data File : VU031997.D
Acq On : 14 May 2019 16:15
Operator : JC/SP
Sample : K2738-04
Misc : 5.0mL/MSVOA_U/WATER
ALS Vial : 17 Sample Multiplier: 1

Instrument :
MSVOA_U
ClientSampleId :
DB883

Quant Method : Z:\VOASRV\HPCHEM1\MSVOA_U\METHOD\SOMULM051419WMA.M
Quant Title : VOC Analysis

TIC Library : C:\DATABASE\NIST11.L
TIC Integration Parameters: LSCINT.P

TIC Top Hit name	RT	EstConc	Units	Response	--Internal Standard--			
					#	RT	Resp	Conc
