

Data Path : Z:\VOASRV\HPCHEM1\MSVOA U\DATA\VU051420\
 Data File : VU038172.D
 Acq On : 14 May 2020 16:18
 Operator : JC/MD
 Sample : L2631-10
 Misc : 25.0mL/MSVOA U/WATER
 ALS Vial : 16 Sample Multiplier: 1

Instrument :
 MSVOA_U
 ClientSampled :
 BF8N4

Integration Parameters: rteint.p
 Integrator: RTE
 Smoothing : ON Filtering: 5
 Sampling : 1 Min Area: 3 % of largest Peak
 Start Thrs: 0.1 Max Peaks: 100
 Stop Thrs : 0 Peak Location: TOP

If leading or trailing edge < 100 prefer < Baseline drop else tangent >
 Peak separation: 5

Method : Z:\VOASRV\HPCHEM1\MSVOA_U\METHOD\SOMUTR050720WMA.M
 Title : TRACE VOA SOM01.0

Signal : TIC

peak #	R.T. min	first scan	max scan	last scan	PK TY	peak height	corr. area	corr. % max.	% of total
1	1.613	76	85	99	rVB	154632	169486	2.38%	0.857%
2	1.932	176	184	202	rVB	151056	195758	2.75%	0.990%
3	2.594	377	390	404	rBV2	241409	405300	5.69%	2.049%
4	4.671	1018	1036	1080	rBV	303417	931900	13.08%	4.711%
5	5.102	1154	1170	1192	rBV	236215	546237	7.67%	2.761%
6	5.761	1349	1375	1401	rBV2	473224	1257747	17.65%	6.358%
7	6.279	1520	1536	1561	rBV	411312	781796	10.97%	3.952%
8	6.571	1607	1627	1657	rBV	3848322	7125554	100.00%	36.021%
9	6.719	1660	1673	1693	rVB	311659	610675	8.57%	3.087%
10	7.591	1928	1944	1963	rBV	153887	273361	3.84%	1.382%
11	7.922	2032	2047	2082	rBV	569186	1019433	14.31%	5.153%
12	8.201	2121	2134	2148	rBV2	97666	165822	2.33%	0.838%
13	8.491	2210	2224	2237	rBV2	94130	174495	2.45%	0.882%
14	8.574	2237	2250	2263	rBV	359520	624618	8.77%	3.158%
15	8.655	2263	2275	2306	rVV	1038005	1907600	26.77%	9.643%
16	9.436	2504	2518	2539	rBV	581484	984278	13.81%	4.976%
17	10.771	2919	2933	2946	rBV	263774	416766	5.85%	2.107%
18	10.902	2962	2974	2986	rBV2	104168	169932	2.38%	0.859%
19	11.822	3246	3260	3280	rVB	602932	962625	13.51%	4.866%
20	12.205	3366	3379	3396	rBV	579913	934064	13.11%	4.722%
21	12.796	3549	3563	3579	rBV	73417	123988	1.74%	0.627%

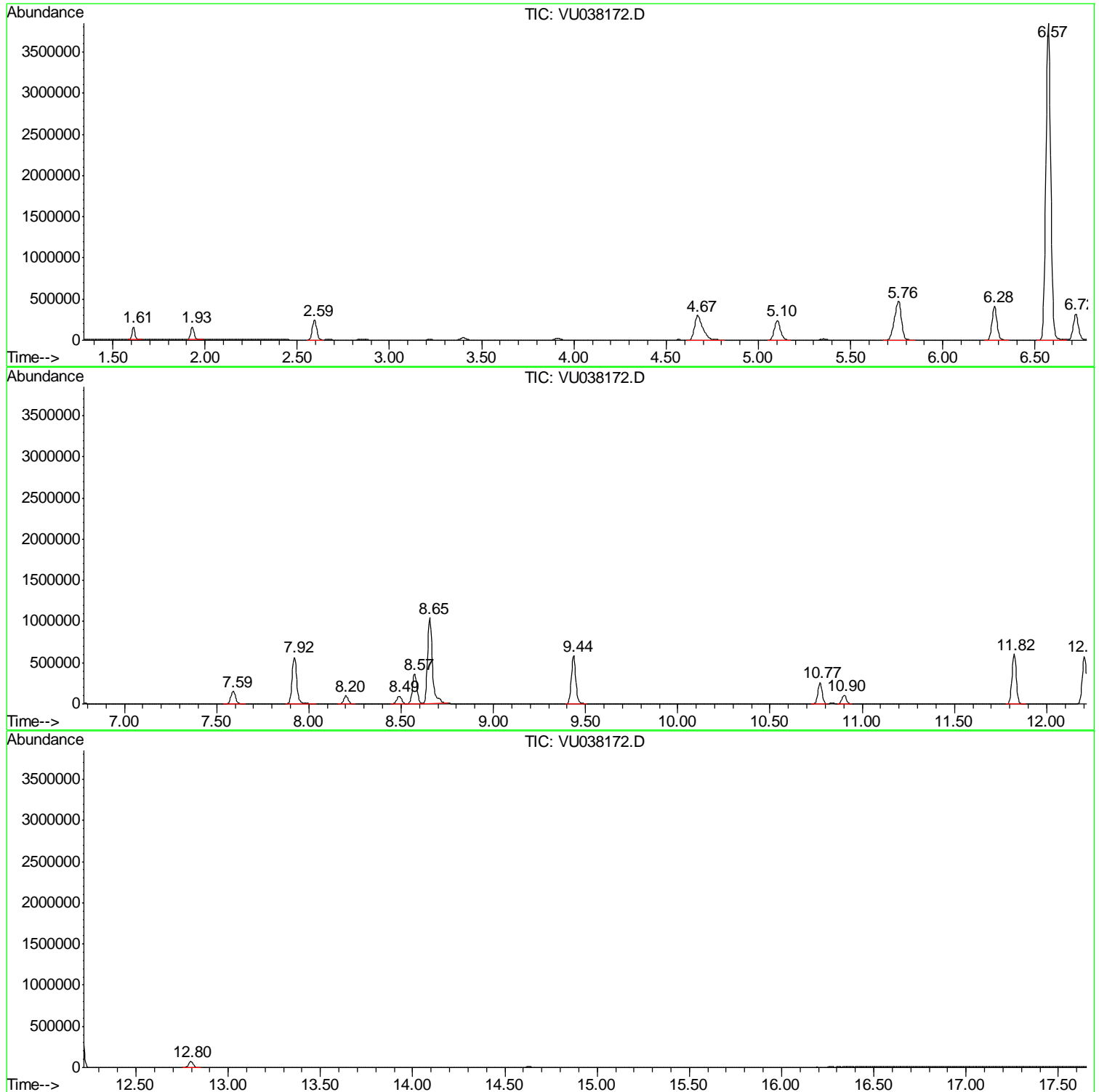
Sum of corrected areas: 19781435

Data Path : Z:\VOASRV\HPCHEM1\MSVOA U\DATA\VU051420\
Data File : VU038172.D
Acq On : 14 May 2020 16:18
Operator : JC/MD
Sample : L2631-10
Misc : 25.0mL/MSVOA U/WATER
ALS Vial : 16 Sample Multiplier: 1

Instrument :
MSVOA_U
ClientSampled :
BF8N4

Quant Method : Z:\VOASRV\HPCHEM1\MSVOA_U\METHOD\SOMUTR050720WMA.M
Quant Title : TRACE VOA SOM01.0

TIC Library : C:\DATABASE\NIST11.L
TIC Integration Parameters: LSCINT.P



Data Path : Z:\VOASRV\HPCHEM1\MSVOA U\DATA\VU051420\
 Data File : VU038172.D
 Acq On : 14 May 2020 16:18
 Operator : JC/MD
 Sample : L2631-10
 Misc : 25.0mL/MSVOA U/WATER
 ALS Vial : 16 Sample Multiplier: 1

Instrument :
 MSVOA_U
 ClientSampled :
 BF8N4

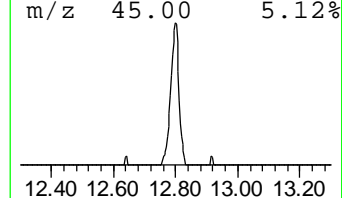
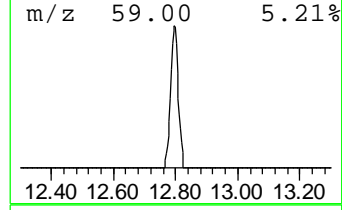
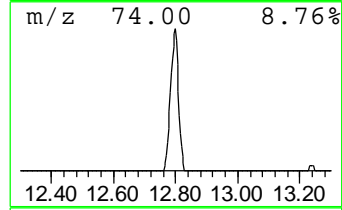
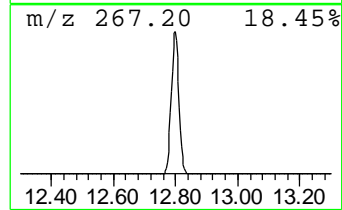
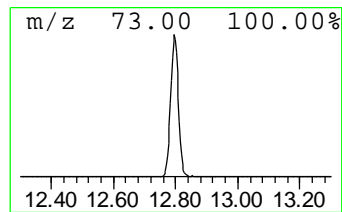
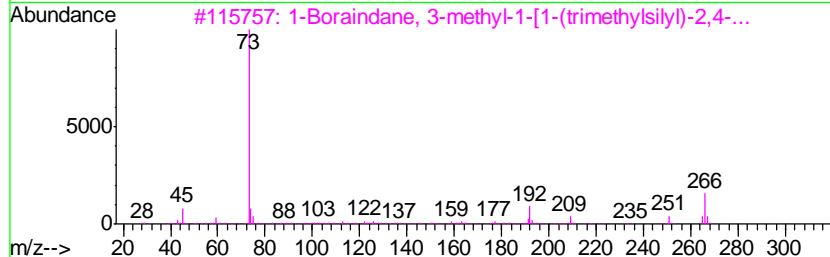
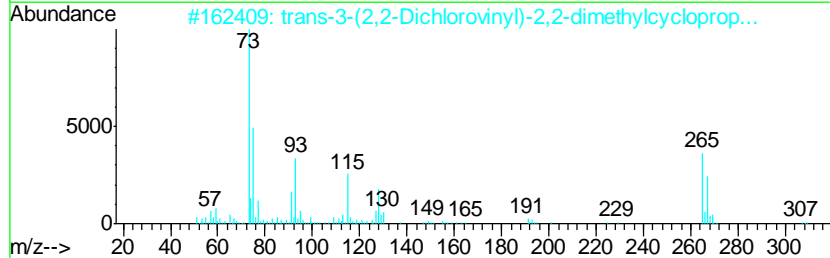
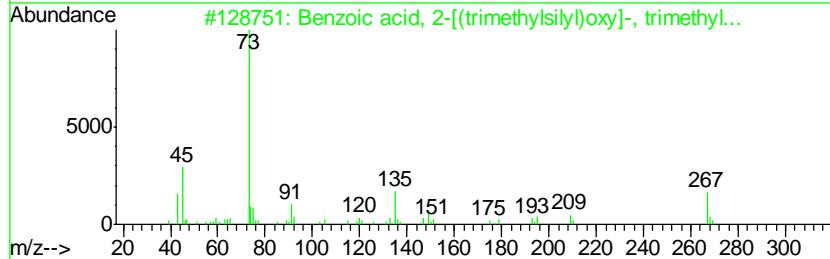
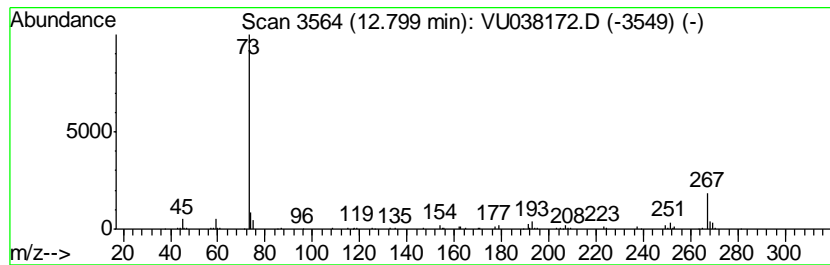
Quant Method : Z:\VOASRV\HPCHEM1\MSVOA_U\METHOD\SOMUTR050720WMA.M
 Quant Title : TRACE VOA SOM01.0

TIC Library : C:\DATABASE\NIST11.L
 TIC Integration Parameters: LSCINT.P

 Peak Number 4 unknown-01 Concentration Rank 4

R.T.	EstConc	Area	Relative to ISTD	R.T.
12.80	0.64 ug/L	123988	1,4-Dichlorobenzene-d4	11.83

Hit#	of	Tentative ID	MW	MolForm	CAS#	Qual
1	5	Benzoic acid, 2-[(trimethylsilyl)oxy]-, trimethyl...	282	C13H22O3Si2	003789-85-3	36
2		trans-3-(2,2-Dichlorovinyl)-2,2-dimethylcycloprop...	322	C14H24Cl2O2Si	1000314-29-8	28
3		1-Boraindane, 3-methyl-1-[1-(trimethylsilyl)-2,4-d...	266	C17H23BSi	190316-36-0	28
4		Benzoic acid, 2-[(trimethylsilyl)oxy]-, trimethyl...	282	C13H22O3Si2	003789-85-3	25
5		Benzeneethanamine, N-[(pentafluoroethyl)oxy]-, tri...	475	C21H26F5NO2Si2	055429-85-1	12



Data Path : Z:\VOASRV\HPCHEM1\MSVOA_U\DATA\VU051420\
Data File : VU038172.D
Acq On : 14 May 2020 16:18
Operator : JC/MD
Sample : L2631-10
Misc : 25.0mL/MSVOA_U/WATER
ALS Vial : 16 Sample Multiplier: 1

Instrument :
MSVOA_U
ClientSampleId :
BF8N4

Quant Method : Z:\VOASRV\HPCHEM1\MSVOA_U\METHOD\SOMUTR050720WMA.M
Quant Title : TRACE VOA SOM01.0

TIC Library : C:\DATABASE\NIST11.L
TIC Integration Parameters: LSCINT.P

TIC Top Hit name	RT	EstConc	Units	Response	--Internal Standard--			
					#	RT	Resp	Conc
unknown-01	12.80	0.6	ug/L	123988	3	11.83	962625	5.0