

Data File : VU032091.D
 Acq On : 17 May 2019 09:29
 Operator : JC/SP
 Sample : K2739-13
 Misc : 25.0mL/MSVOA_U/WATER
 ALS Vial : 54 Sample Multiplier: 1

Instrument :
 MSVOA_U
 ClientSampleId :
 DB894

Quant Time: May 18 01:54:39 2019
 Quant Method : Z:\VOASRV\HPCHEM1\MSVOA_U\METHOD\SOMUTR051619WMA.M
 Quant Title : TRACE VOA SOM01.0
 QLast Update : Sat May 18 01:51:41 2019
 Response via : Initial Calibration

Internal Standards	R.T.	QIon	Response	Conc	Units	Dev(Min)
1) 1,4-Difluorobenzene	5.88	114	379919	5.00	ug/L	0.00
28) Chlorobenzene-d5	9.09	117	395585	5.00	ug/L	0.00
60) 1,4-Dichlorobenzene-d4	11.48	152	155372	5.00	ug/L	0.00

System Monitoring Compounds

4) Vinyl Chloride-d3	1.40	65	133364	4.16	ug/L	0.00
Spiked Amount	5.000	Range	40 - 130	Recovery	=	83.20%
7) Chloroethane-d5	1.67	69	116741	4.27	ug/L	0.00
Spiked Amount	5.000	Range	65 - 130	Recovery	=	85.40%
11) 1,1-Dichloroethene-d2	2.27	63	189591	3.72	ug/L	0.00
Spiked Amount	5.000	Range	60 - 125	Recovery	=	74.40%
20) 2-Butanone-d5	4.19	46	255075	40.60	ug/L	0.00
Spiked Amount	50.000	Range	40 - 130	Recovery	=	81.20%
24) Chloroform-d	4.64	84	241383	4.29	ug/L	0.00
Spiked Amount	5.000	Range	70 - 125	Recovery	=	85.80%
26) 1,2-Dichloroethane-d4	5.31	65	119397	4.11	ug/L	0.00
Spiked Amount	5.000	Range	70 - 130	Recovery	=	82.20%
32) Benzene-d6	5.33	84	489027	4.05	ug/L	0.00
Spiked Amount	5.000	Range	70 - 125	Recovery	=	81.00%
36) 1,2-Dichloropropane-d6	6.33	67	140521	3.98	ug/L	0.00
Spiked Amount	5.000	Range	60 - 140	Recovery	=	79.60%
41) Toluene-d8	7.56	98	410615	3.86	ug/L	0.00
Spiked Amount	5.000	Range	70 - 130	Recovery	=	77.20%
43) trans-1,3-Dichloropropene-	7.85	79	47506	3.74	ug/L	0.00
Spiked Amount	5.000	Range	55 - 130	Recovery	=	74.80%
46) 2-Hexanone-d5	8.31	63	212527	37.06	ug/L	0.00
Spiked Amount	50.000	Range	45 - 130	Recovery	=	74.12%
57) 1,1,2,2-Tetrachloroethane-	10.43	84	116453	4.04	ug/L	0.00
Spiked Amount	5.000	Range	65 - 120	Recovery	=	80.80%
64) 1,2-Dichlorobenzene-d4	11.86	152	147383	4.48	ug/L	0.00
Spiked Amount	5.000	Range	80 - 120	Recovery	=	89.60%

Target Compounds

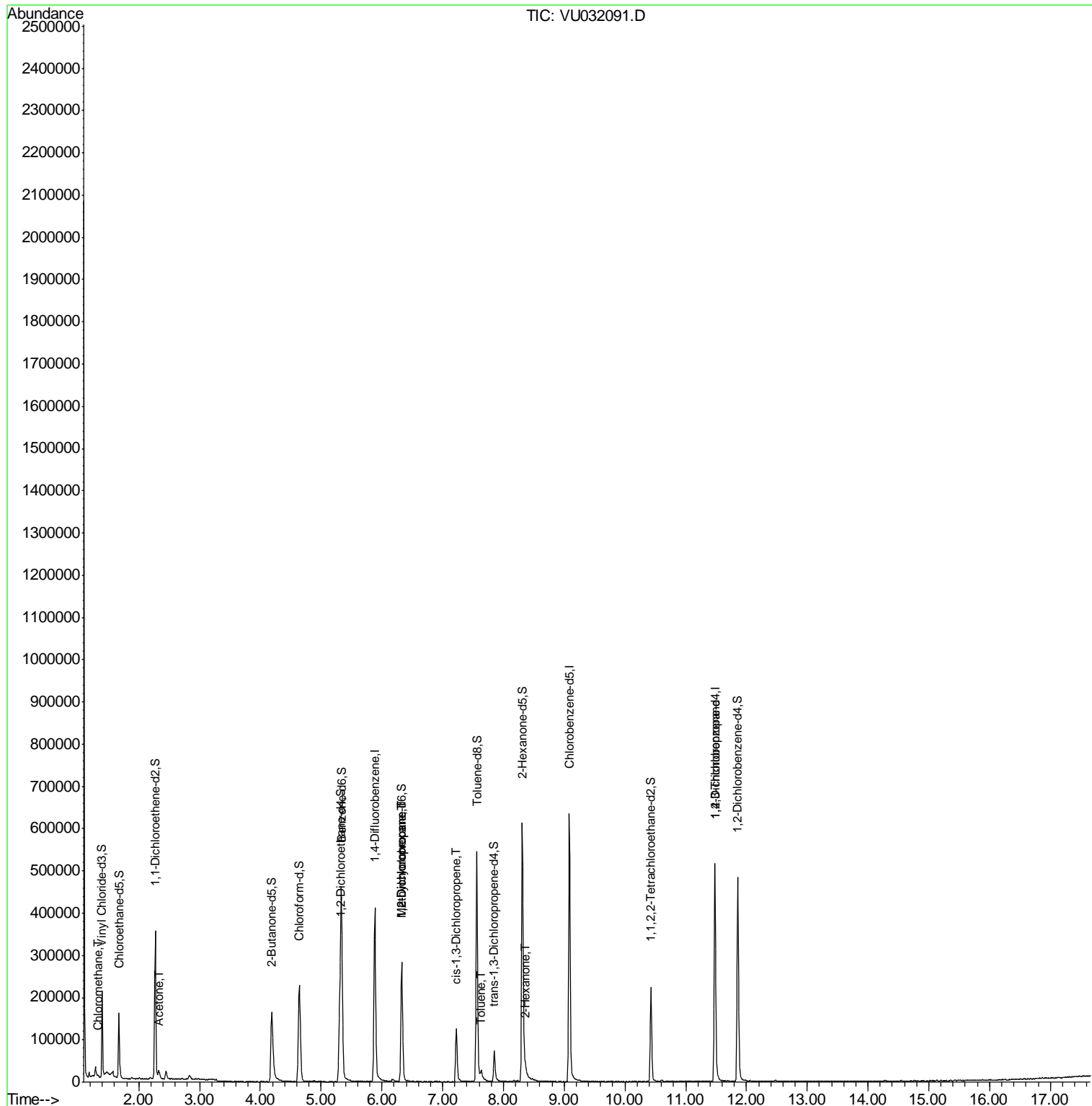
						Qvalue
3) Chloromethane	1.33	50	3501	0.192	ug/L	92
13) Acetone	2.32	43	13967	6.771	ug/L	95
35) Methylcyclohexane	6.33	83	36604	1.543	ug/L #	20
37) 1,2-Dichloropropane	6.33	63	14969	1.008	ug/L #	88
39) cis-1,3-Dichloropropene	7.22	75	3087	0.150	ug/L #	24
42) Toluene	7.64	91	18689	0.294	ug/L	91
48) 2-Hexanone	8.37	43	7339	1.374	ug/L #	81
59) 1,2,3-Trichloropropane	11.48	75	15876	1.683	ug/L #	88

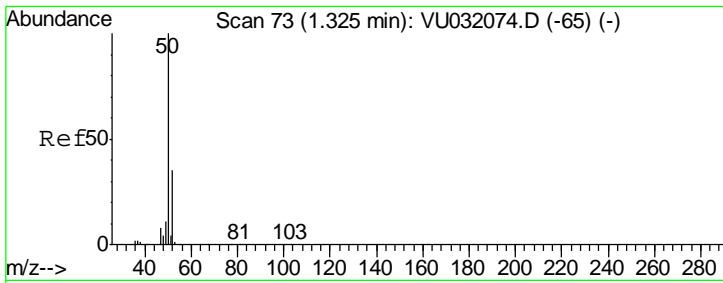
(#) = qualifier out of range (m) = manual integration (+) = signals summed

Data File : VU032091.D
Acq On : 17 May 2019 09:29
Operator : JC/SP
Sample : K2739-13
Misc : 25.0mL/MSVOA_U/WATER
ALS Vial : 54 Sample Multiplier: 1

Instrument :
MSVOA_U
ClientSampleID :
DB894

Quant Time: May 18 01:54:39 2019
Quant Method : Z:\VOASRV\HPCHEM1\MSVOA_U\METHOD\SOMUTR051619WMA.M
Quant Title : TRACE VOA SOM01.0
QLast Update : Sat May 18 01:51:41 2019
Response via : Initial Calibration

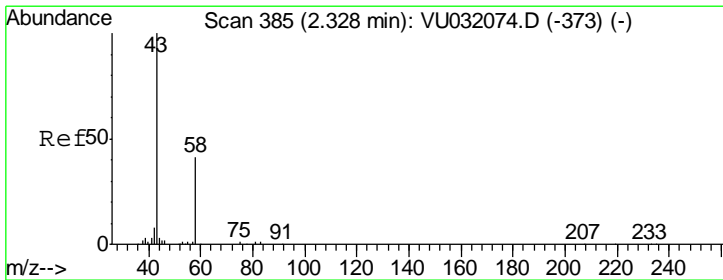
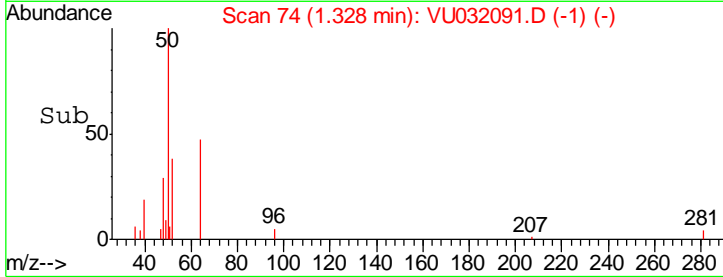
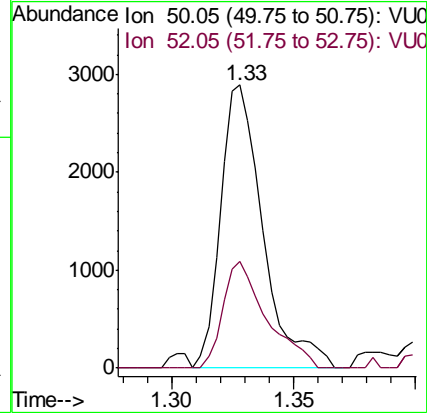
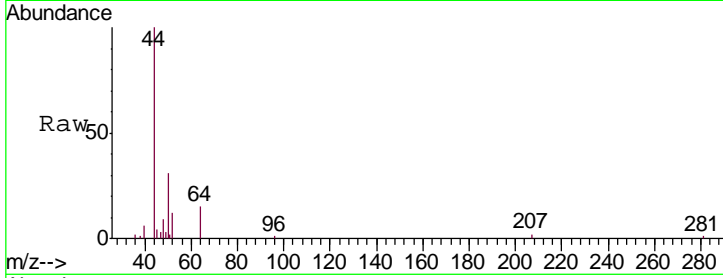




#3
 Chloromethane
 Concen: 0.192 ug/L
 RT: 1.33 min Scan# 74
 Delta R.T. 0.00 min
 Lab File: VU032091.D
 Acq: 17 May 2019 09:29

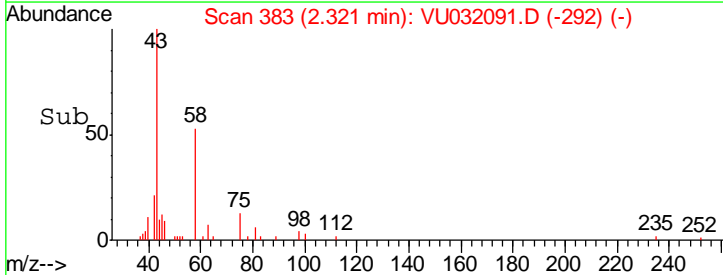
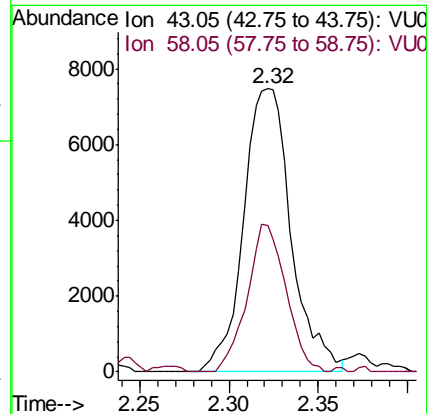
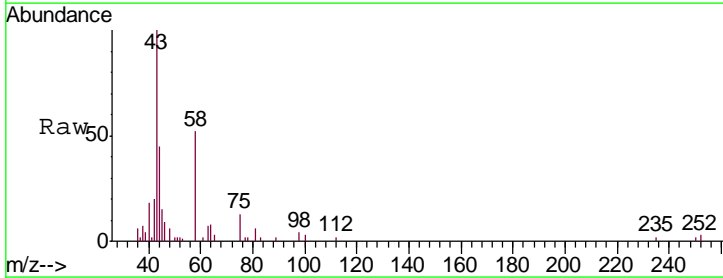
Instrument :
 MSVOA_U
 ClientSampled :
 DB894

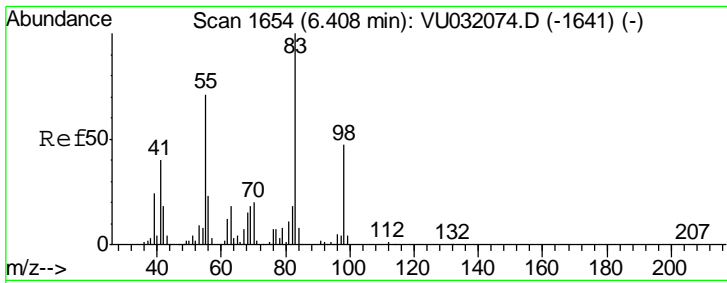
Tgt Ion: 50 Resp: 3501
 Ion Ratio Lower Upper
 50 100
 52 37.7 23.2 43.0



#13
 Acetone
 Concen: 6.771 ug/L
 RT: 2.32 min Scan# 383
 Delta R.T. -0.01 min
 Lab File: VU032091.D
 Acq: 17 May 2019 09:29

Tgt Ion: 43 Resp: 13967
 Ion Ratio Lower Upper
 43 100
 58 42.5 0.0 78.8

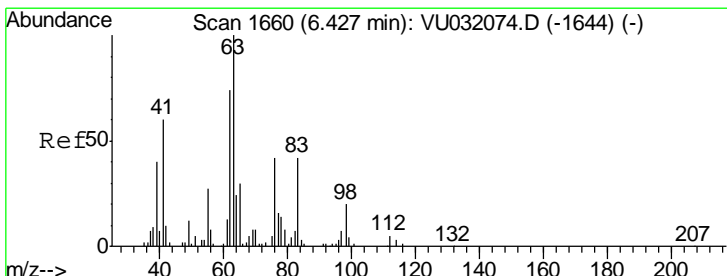
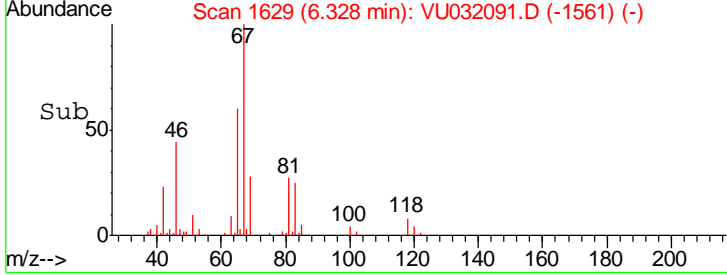
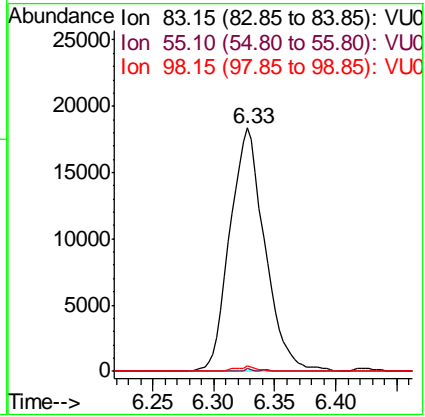
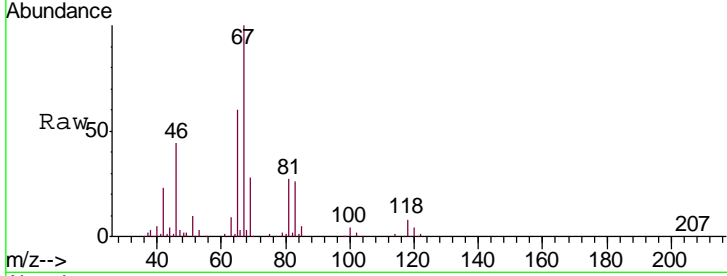




#35
 Methylcyclohexane
 Concen: 1.543 ug/L
 RT: 6.33 min Scan# 1629
 Delta R.T. -0.08 min
 Lab File: VU032091.D
 Acq: 17 May 2019 09:29

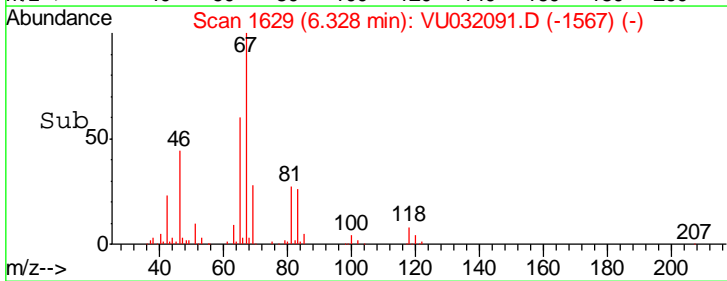
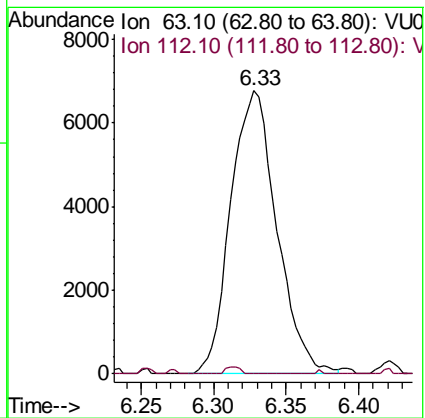
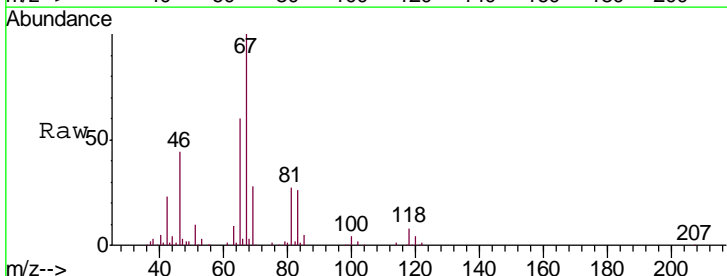
Instrument : MSVOA_U
 ClientSampled : DB894

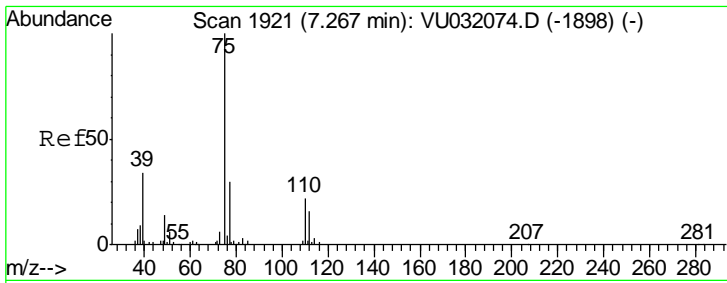
Tgt Ion	Resp	Lower	Upper
83	100		
55	0.2	59.7	89.5#
98	1.2	36.8	55.2#



#37
 1,2-Dichloropropane
 Concen: 1.008 ug/L
 RT: 6.33 min Scan# 1629
 Delta R.T. -0.10 min
 Lab File: VU032091.D
 Acq: 17 May 2019 09:29

Tgt Ion	Resp	Lower	Upper
63	100		
112	0.8	3.8	5.6#

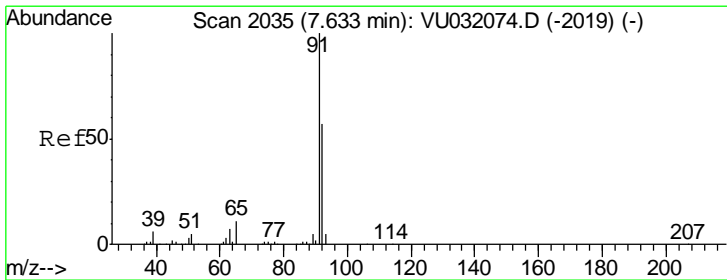
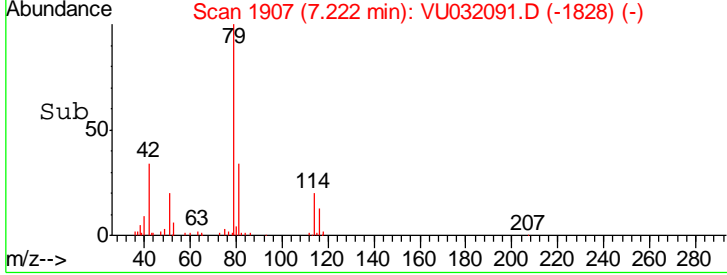
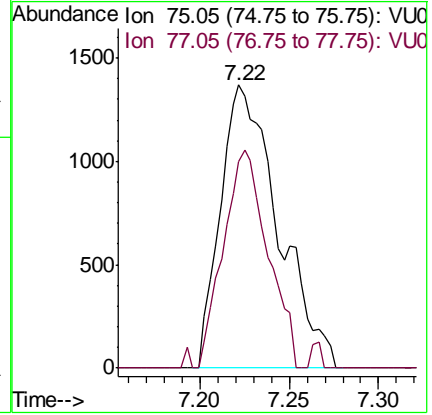
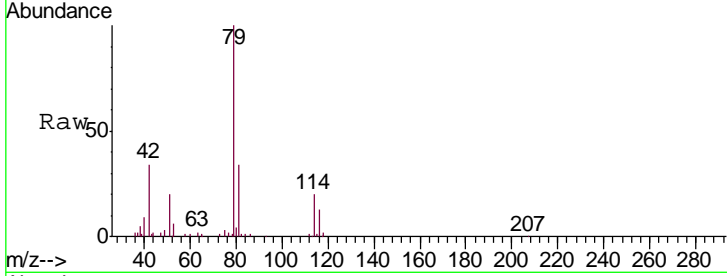




#39
 cis-1,3-Dichloropropene
 Concen: 0.150 ug/L
 RT: 7.22 min Scan# 1907
 Delta R.T. -0.05 min
 Lab File: VU032091.D
 Acq: 17 May 2019 09:29

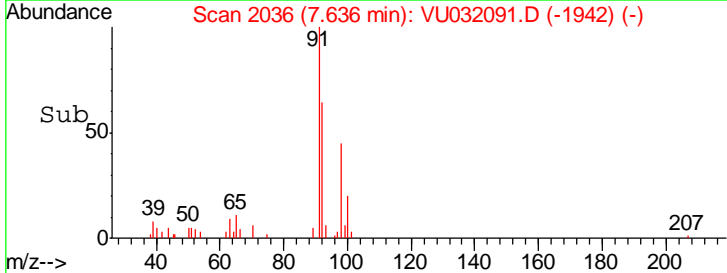
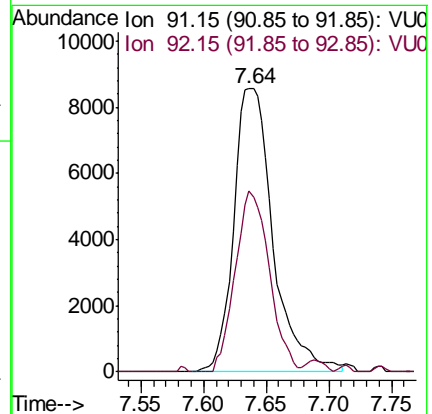
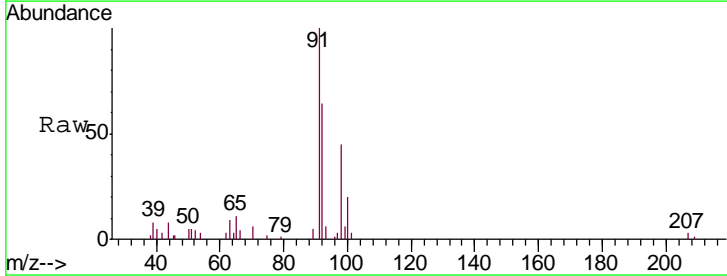
Instrument : MSVOA_U
 ClientSampled : DB894

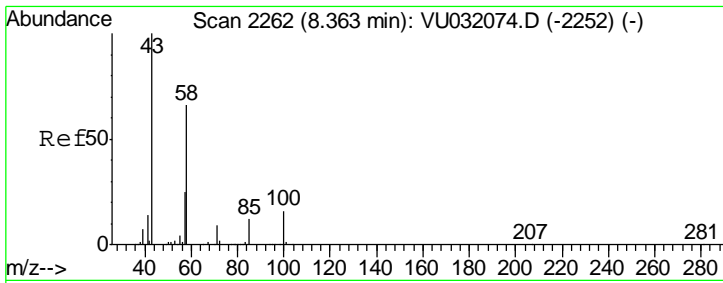
Tgt Ion	Resp	Lower	Upper
75	100		
77	73.0	21.7	40.3#



#42
 Toluene
 Concen: 0.294 ug/L
 RT: 7.64 min Scan# 2036
 Delta R.T. 0.00 min
 Lab File: VU032091.D
 Acq: 17 May 2019 09:29

Tgt Ion	Resp	Lower	Upper
91	100		
92	64.0	40.2	74.6

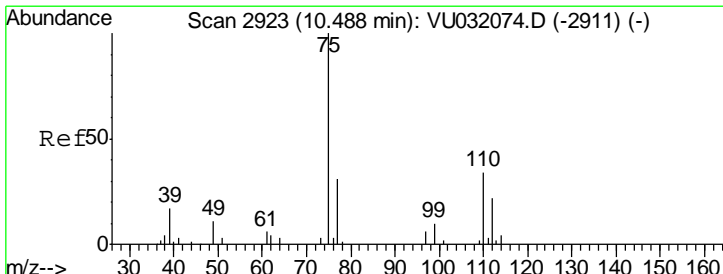
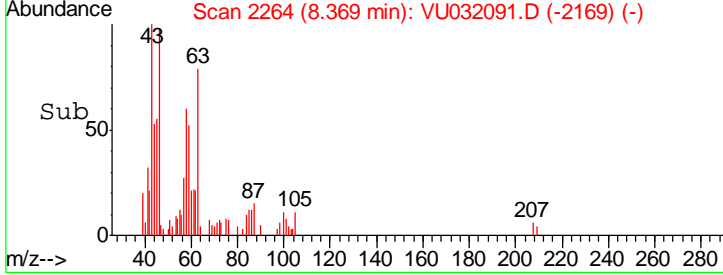
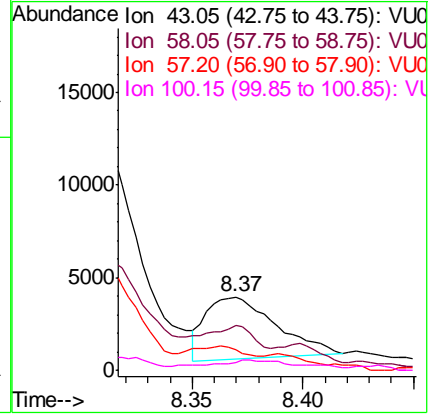
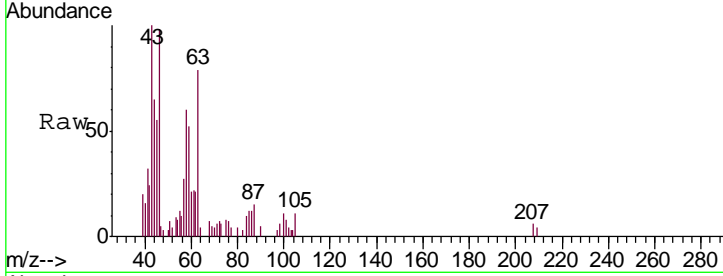




#48
 2-Hexanone
 Concen: 1.374 ug/L
 RT: 8.37 min Scan# 2264
 Delta R.T. 0.01 min
 Lab File: VU032091.D
 Acq: 17 May 2019 09:29

Instrument : MSVOA_U
 ClientSampled : DB894

Tgt Ion	Resp	Lower	Upper
43	100		
58	47.7	51.6	77.4#
57	32.6	18.4	27.6#
100	19.6	12.2	18.4#



#59
 1,2,3-Trichloropropane
 Concen: 1.683 ug/L
 RT: 11.48 min Scan# 3231
 Delta R.T. 0.99 min
 Lab File: VU032091.D
 Acq: 17 May 2019 09:29

Tgt Ion	Resp	Lower	Upper
75	100		
77	39.6	26.2	39.2#

