

Data Path : Z:\VOASRV\HPCHEM1\MSVOA U\DATA\VU051619\
 Data File : VU032067.D
 Acq On : 16 May 2019 22:44
 Operator : JC/SP
 Sample : K2850-09
 Misc : 25.0mL/MSVOA U/WATER
 ALS Vial : 28 Sample Multiplier: 1

Instrument :
 MSVOA_U
 ClientSampled :
 F9W09

Integration Parameters: rteint.p
 Integrator: RTE
 Smoothing : ON Filtering: 5
 Sampling : 1 Min Area: 3 % of largest Peak
 Start Thrs: 0.1 Max Peaks: 100
 Stop Thrs : 0 Peak Location: TOP

If leading or trailing edge < 100 prefer < Baseline drop else tangent >
 Peak separation: 5

Method : Z:\VOASRV\HPCHEM1\MSVOA_U\METHOD\SOMUTR051619WMA.M
 Title : TRACE VOA SOM01.0

Signal : TIC

peak #	R.T. min	first scan	max scan	last scan	PK TY	peak height	corr. area	corr. % max.	% of total
1	1.395	87	95	109	rBV	214919	245454	16.19%	1.897%
2	1.678	175	183	197	rVB	178387	222775	14.69%	1.722%
3	2.267	355	366	378	rBV	398047	596322	39.33%	4.609%
4	2.338	381	388	400	rVB3	13368	30666	2.02%	0.237%
5	2.829	531	541	552	rBV4	7936	19161	1.26%	0.148%
6	3.003	579	595	619	rVB	690284	1516025	100.00%	11.716%
7	4.206	953	969	996	rBV	159600	494403	32.61%	3.821%
8	4.640	1087	1104	1128	rBV	252546	593941	39.18%	4.590%
9	5.334	1297	1320	1340	rBV2	512890	1391011	91.75%	10.750%
10	5.582	1384	1397	1412	rVB4	34846	74947	4.94%	0.579%
11	5.881	1477	1490	1512	rBV	442376	896028	59.10%	6.925%
12	6.328	1615	1629	1651	rBV	310971	627360	41.38%	4.848%
13	7.225	1897	1908	1929	rBV3	134351	255686	16.87%	1.976%
14	7.562	1998	2013	2033	rBV	597932	1105561	72.92%	8.544%
15	7.852	2093	2103	2121	rBV	82308	148091	9.77%	1.144%
16	8.315	2235	2247	2295	rBV	684890	1348184	88.93%	10.419%
17	9.086	2474	2487	2509	rBV	669053	1156057	76.26%	8.934%
18	10.427	2892	2904	2923	rBV	246648	400686	26.43%	3.097%
19	11.482	3220	3232	3258	rBV	535552	902659	59.54%	6.976%
20	11.855	3335	3348	3374	rBV	532401	914441	60.32%	7.067%

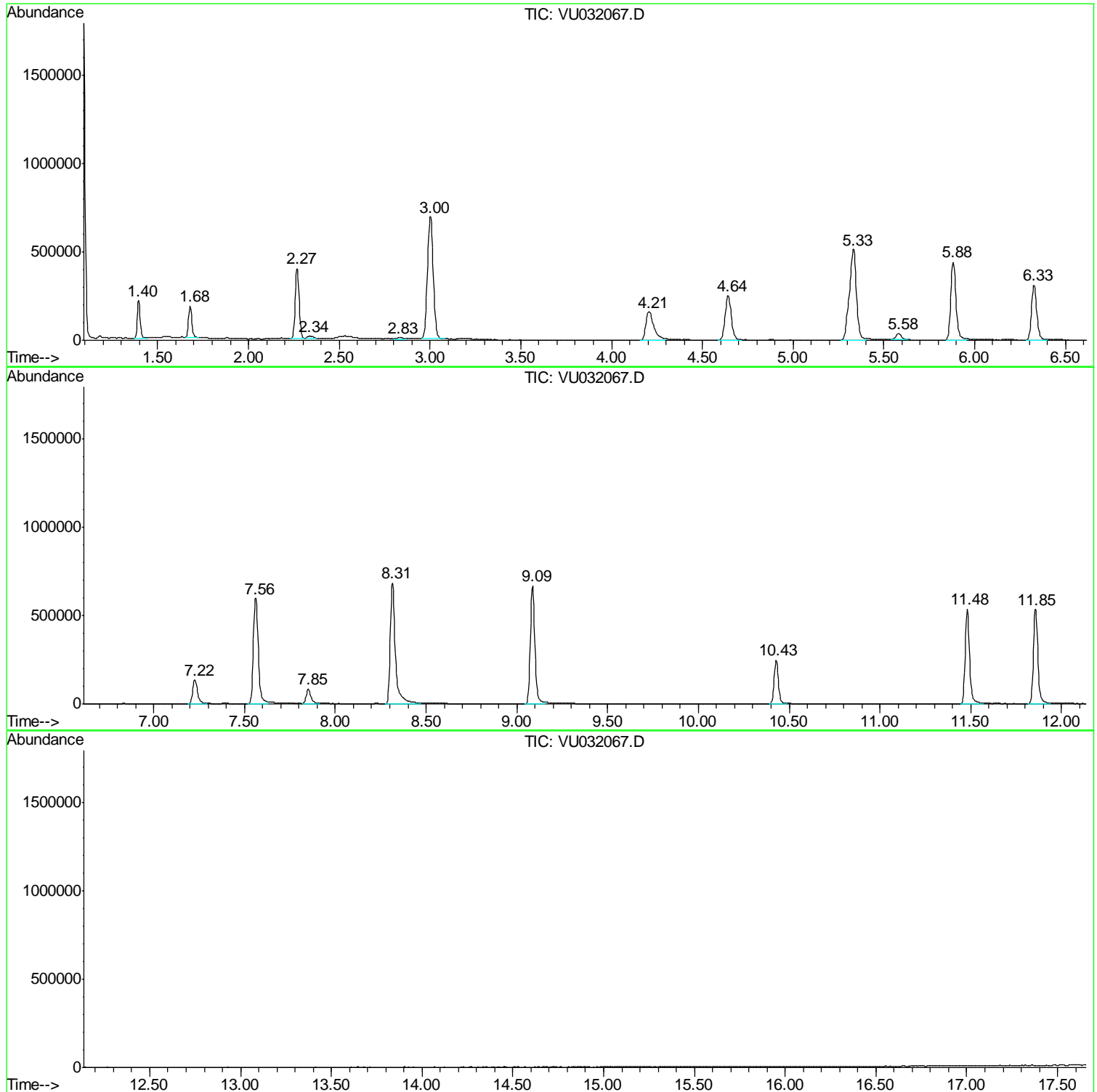
Sum of corrected areas: 12939458

Data Path : Z:\VOASRV\HPCHEM1\MSVOA U\DATA\VU051619\
Data File : VU032067.D
Acq On : 16 May 2019 22:44
Operator : JC/SP
Sample : K2850-09
Misc : 25.0mL/MSVOA U/WATER
ALS Vial : 28 Sample Multiplier: 1

Instrument :
MSVOA_U
ClientSampled :
F9W09

Quant Method : Z:\VOASRV\HPCHEM1\MSVOA_U\METHOD\SOMUTR051619WMA.M
Quant Title : TRACE VOA SOM01.0

TIC Library : C:\DATABASE\NIST11.L
TIC Integration Parameters: LSCINT.P



Data Path : Z:\VOASRV\HPCHEM1\MSVOA_U\DATA\VU051619\
Data File : VU032067.D
Acq On : 16 May 2019 22:44
Operator : JC/SP
Sample : K2850-09
Misc : 25.0mL/MSVOA_U/WATER
ALS Vial : 28 Sample Multiplier: 1

Instrument :
MSVOA_U
ClientSampled :
F9W09

Quant Method : Z:\VOASRV\HPCHEM1\MSVOA_U\METHOD\SOMUTR051619WMA.M
Quant Title : TRACE VOA SOM01.0

TIC Library : C:\DATABASE\NIST11.L
TIC Integration Parameters: LSCINT.P

No Library Search Compounds Detected

Data Path : Z:\VOASRV\HPCHEM1\MSVOA_U\DATA\VU051619\
Data File : VU032067.D
Acq On : 16 May 2019 22:44
Operator : JC/SP
Sample : K2850-09
Misc : 25.0mL/MSVOA_U/WATER
ALS Vial : 28 Sample Multiplier: 1

Instrument :
MSVOA_U
ClientSampleId :
F9W09

Quant Method : Z:\VOASRV\HPCHEM1\MSVOA_U\METHOD\SOMUTR051619WMA.M
Quant Title : TRACE VOA SOM01.0

TIC Library : C:\DATABASE\NIST11.L
TIC Integration Parameters: LSCINT.P

TIC Top Hit name	RT	EstConc	Units	Response	--Internal Standard--			
					#	RT	Resp	Conc
