

Data Path : Z:\VOASRV\HPCHEM1\MSVOA U\DATA\VU051719\
 Data File : VU032138.D
 Acq On : 18 May 2019 07:30
 Operator : JC/SP
 Sample : K2860-13
 Misc : 25.0mL/MSVOA U/WATER
 ALS Vial : 42 Sample Multiplier: 1

Instrument :
 MSVOA_U
 ClientSampled :
 F9W40

Manual Integrations
 APPROVED

MMDadoda
 5/20/2019 10:12:11 AM

Quant Time: May 20 05:15:01 2019
 Quant Method : Z:\VOASRV\HPCHEM1\MSVOA_U\METHOD\SOMUTR051619WMA.M
 Quant Title : TRACE VOA SOM01.0
 QLast Update : Mon May 20 04:57:10 2019
 Response via : Initial Calibration

Internal Standards	R.T.	QIon	Response	Conc	Units	Dev(Min)
1) 1,4-Difluorobenzene	5.88	114	354224	5.00	ug/L	0.00
28) Chlorobenzene-d5	9.09	117	364133	5.00	ug/L	0.00
60) 1,4-Dichlorobenzene-d4	11.48	152	144271	5.00	ug/L	0.00

System Monitoring Compounds

4) Vinyl Chloride-d3	1.40	65	105316	3.53	ug/L	0.00
Spiked Amount	5.000	Range	40 - 130	Recovery	=	70.60%
7) Chloroethane-d5	1.68	69	95930	3.76	ug/L	0.00
Spiked Amount	5.000	Range	65 - 130	Recovery	=	75.20%
11) 1,1-Dichloroethene-d2	2.27	63	153614	3.23	ug/L	0.00
Spiked Amount	5.000	Range	60 - 125	Recovery	=	64.60%
20) 2-Butanone-d5	4.20	46	238599	40.73	ug/L	0.00
Spiked Amount	50.000	Range	40 - 130	Recovery	=	81.46%
24) Chloroform-d	4.64	84	218165	4.16	ug/L	0.00
Spiked Amount	5.000	Range	70 - 125	Recovery	=	83.20%
26) 1,2-Dichloroethane-d4	5.31	65	111024	4.10	ug/L	0.00
Spiked Amount	5.000	Range	70 - 130	Recovery	=	82.00%
32) Benzene-d6	5.33	84	437553	3.94	ug/L	0.00
Spiked Amount	5.000	Range	70 - 125	Recovery	=	78.80%
36) 1,2-Dichloropropane-d6	6.33	67	125885	3.88	ug/L	0.00
Spiked Amount	5.000	Range	60 - 140	Recovery	=	77.60%
41) Toluene-d8	7.56	98	364669	3.73	ug/L	0.00
Spiked Amount	5.000	Range	70 - 130	Recovery	=	74.60%
43) trans-1,3-Dichloropropene-	7.85	79	39966	3.42	ug/L	0.00
Spiked Amount	5.000	Range	55 - 130	Recovery	=	68.40%
46) 2-Hexanone-d5	8.31	63	204057	38.66	ug/L	0.00
Spiked Amount	50.000	Range	45 - 130	Recovery	=	77.32%
57) 1,1,2,2-Tetrachloroethane-	10.43	84	111977	4.22	ug/L	0.00
Spiked Amount	5.000	Range	65 - 120	Recovery	=	84.40%
64) 1,2-Dichlorobenzene-d4	11.86	152	138876	4.54	ug/L	0.00
Spiked Amount	5.000	Range	80 - 120	Recovery	=	90.80%

Target Compounds

Target Compounds	R.T.	QIon	Response	Conc	Units	Ovalue
13) Acetone	2.34	43	38842	20.197	ug/L	100
17) Methyl tert-butyl Ether	3.00	73	4999	0.149	ug/L #	80
18) trans-1,2-Dichloroethene	2.97	96	9092	0.597	ug/L	86
21) 2-Butanone	4.30	43	5346m	1.937	ug/L	
22) cis-1,2-Dichloroethene	4.22	96	41261	2.755	ug/L	93
34) Trichloroethene	6.18	95	299171	19.726	ug/L	94
47) Tetrachloroethene	8.22	164	80927	7.138	ug/L	94

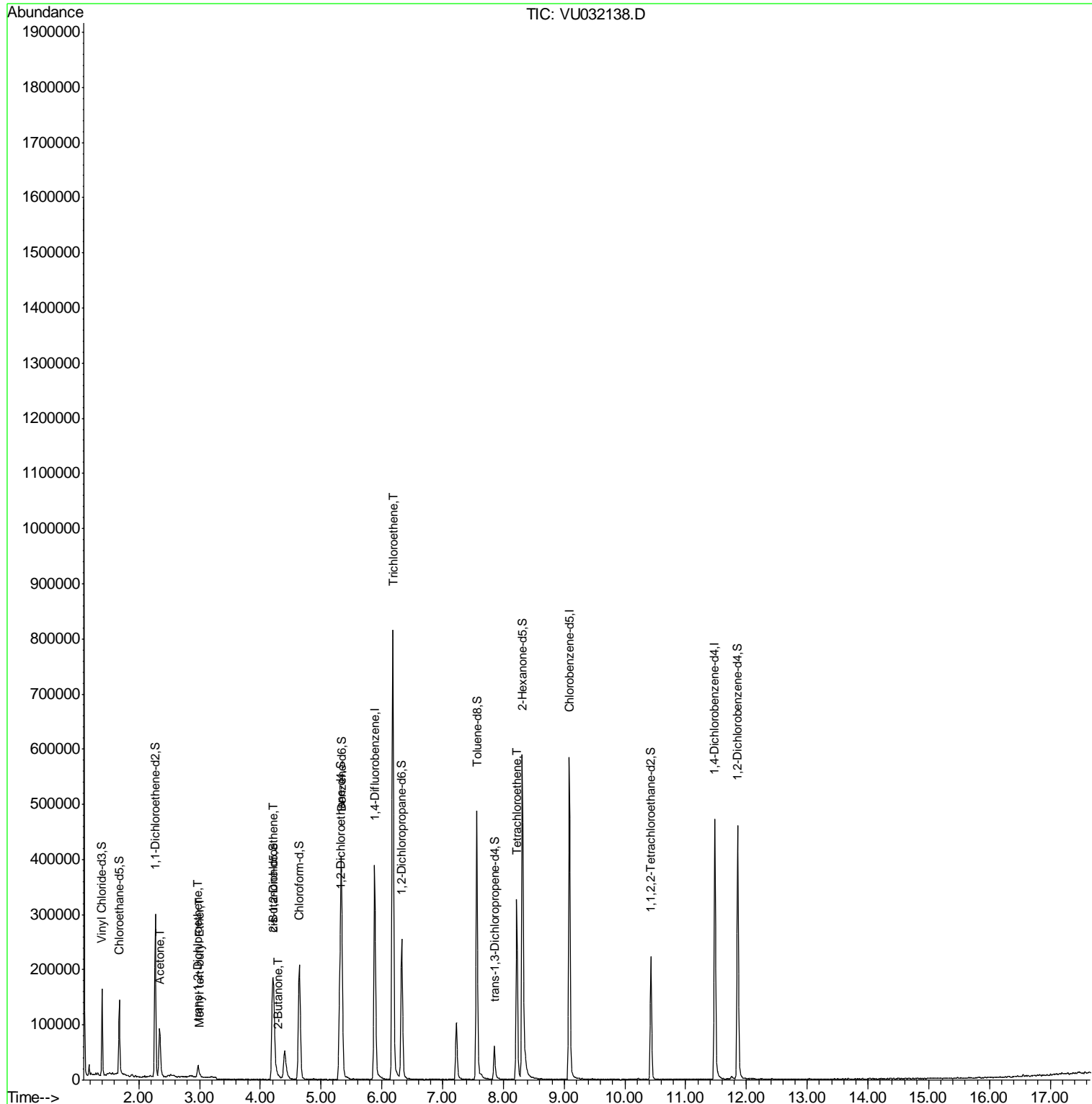
(#) = qualifier out of range (m) = manual integration (+) = signals summed

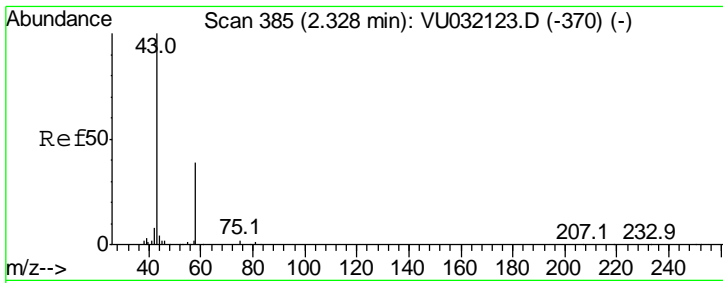
Data Path : Z:\VOASRV\HPCHEM1\MSVOA U\DATA\VU051719\
 Data File : VU032138.D
 Acq On : 18 May 2019 07:30
 Operator : JC/SP
 Sample : K2860-13
 Misc : 25.0mL/MSVOA U/WATER
 ALS Vial : 42 Sample Multiplier: 1

Instrument :
 MSVOA_U
 Client Sampled :
 F9W40

Manual Integrations
APPROVED
 MMDadoda
 5/20/2019 10:12:11 AM

Quant Time: May 20 05:15:01 2019
 Quant Method : Z:\VOASRV\HPCHEM1\MSVOA_U\METHOD\SOMUTR051619WMA.M
 Quant Title : TRACE VOA SOM01.0
 QLast Update : Mon May 20 04:57:10 2019
 Response via : Initial Calibration





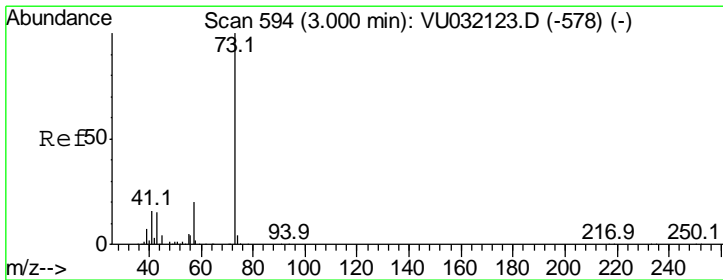
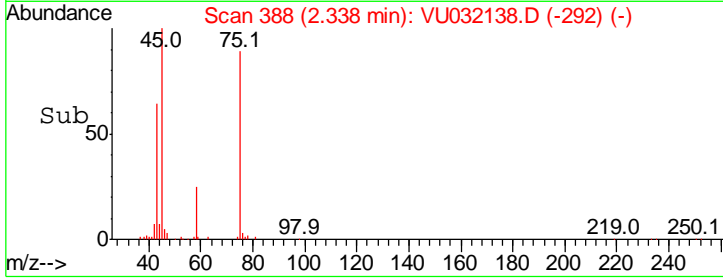
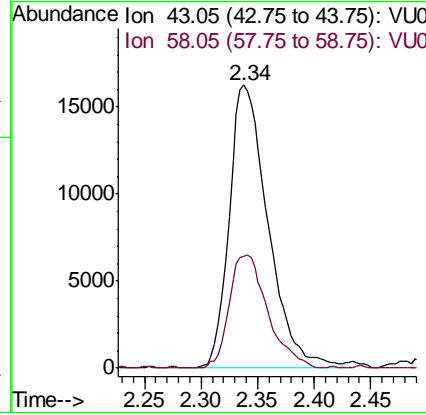
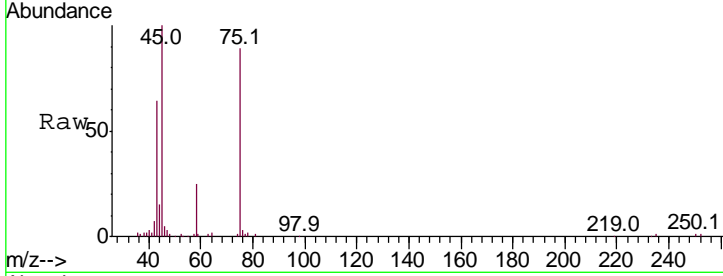
#13
 Acetone
 Concen: 20.197 ug/L
 RT: 2.34 min Scan# 388
 Delta R.T. 0.01 min
 Lab File: VU032138.D
 Acq: 18 May 2019 07:30

Instrument :
 MSVOA_U
ClientSampled :
 F9W40

Tgt Ion	Ratio	Lower	Upper
43	100		
58	39.7	0.0	78.8

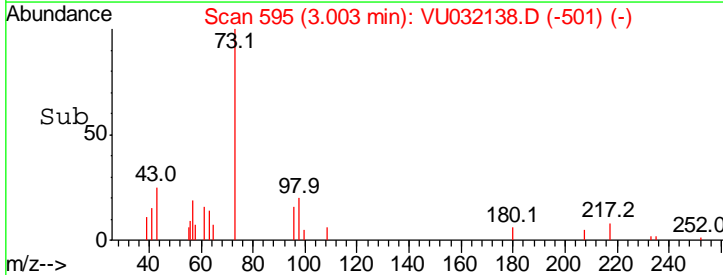
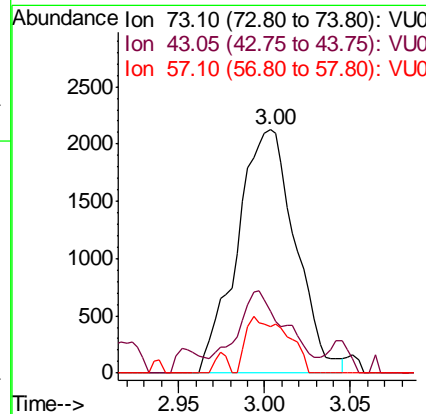
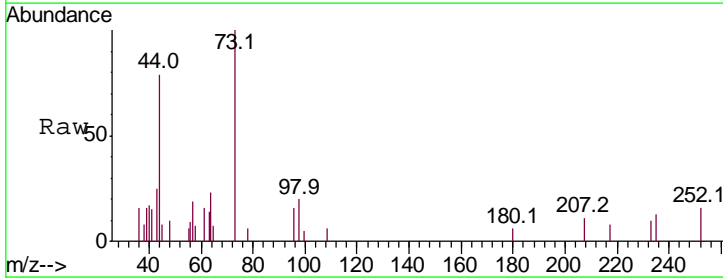
Manual Integrations
APPROVED

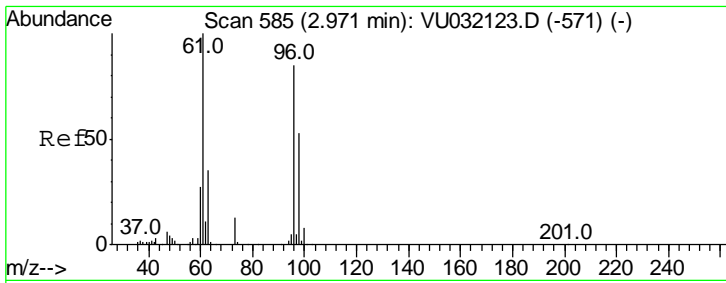
MMDadoda
 5/20/2019 10:12:11 AM



#17
 Methyl tert-butyl Ether
 Concen: 0.149 ug/L
 RT: 3.00 min Scan# 595
 Delta R.T. 0.00 min
 Lab File: VU032138.D
 Acq: 18 May 2019 07:30

Tgt Ion	Ratio	Lower	Upper
73	100		
43	29.2	13.0	19.6#
57	16.4	17.9	26.9#





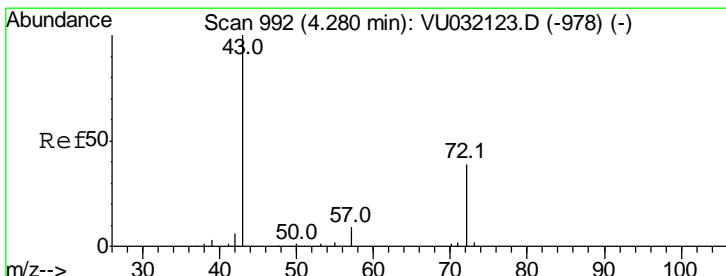
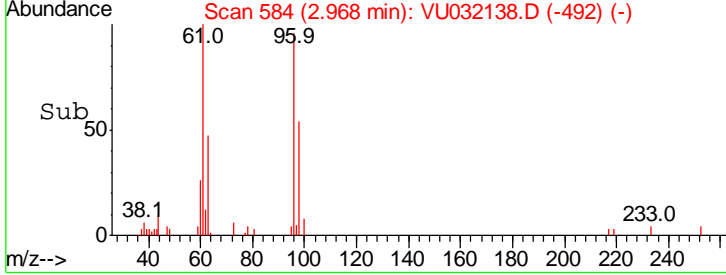
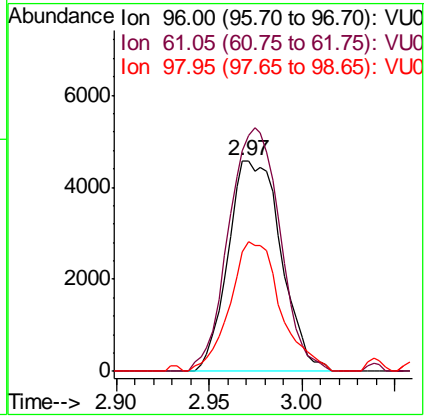
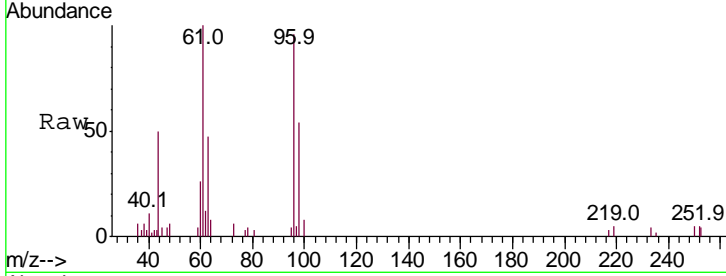
#18
 trans-1,2-Dichloroethene
 Concen: 0.597 ug/L
 RT: 2.97 min Scan# 584
 Delta R.T. -0.00 min
 Lab File: VU032138.D
 Acq: 18 May 2019 07:30

Instrument :
 MSVOA_U
ClientSampled :
 F9W40

Tgt Ion: 96 Resp: 9092

Ion	Ratio	Lower	Upper
96	100		
61	104.5	86.5	160.7
98	56.6	43.5	80.9

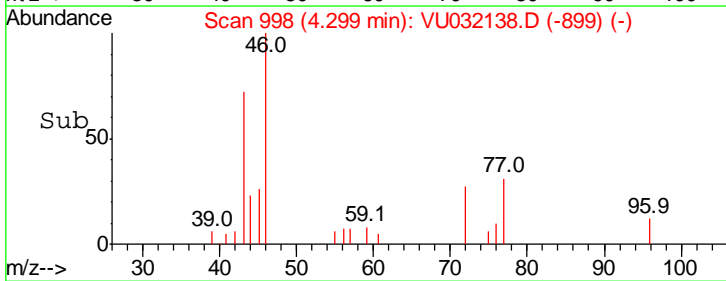
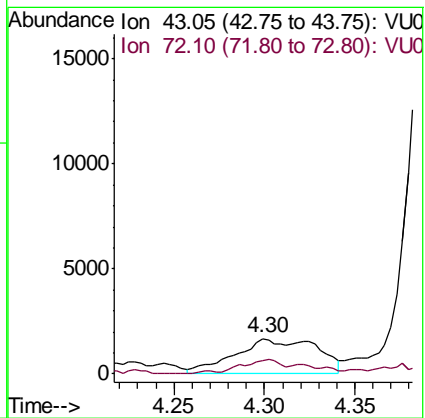
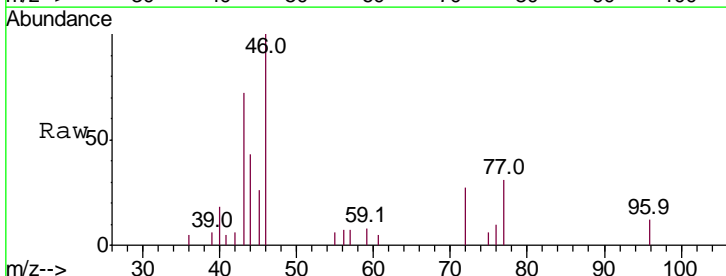
Manual Integrations
APPROVED
 MMDadoda
 5/20/2019 10:12:11 AM

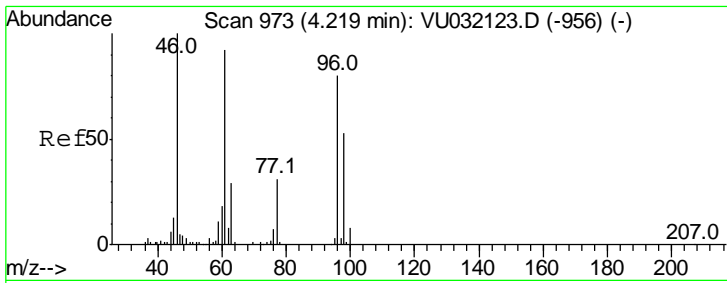


#21
 2-Butanone
 Concen: 1.937 ug/L m
 RT: 4.30 min Scan# 998
 Delta R.T. 0.02 min
 Lab File: VU032138.D
 Acq: 18 May 2019 07:30

Tgt Ion: 43 Resp: 5346

Ion	Ratio	Lower	Upper
43	100		
72	18.7	16.8	50.3





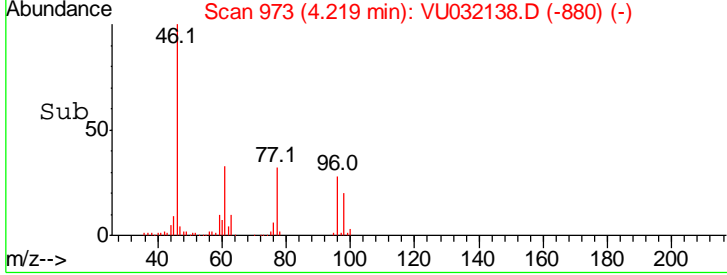
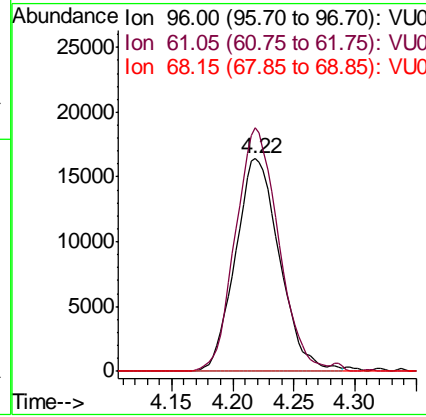
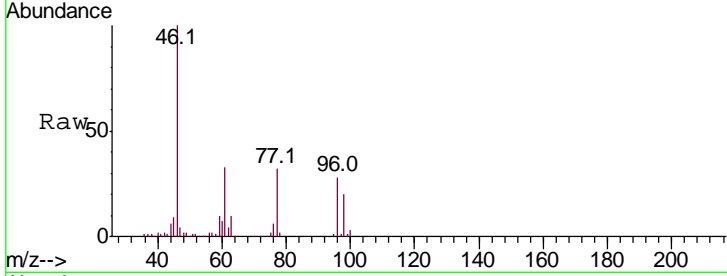
#22
 cis-1,2-Dichloroethene
 Concen: 2.755 ug/L
 RT: 4.22 min Scan# 973
 Delta R.T. -0.00 min
 Lab File: VU032138.D
 Acq: 18 May 2019 07:30

Instrument : MSVOA_U
 ClientSampled : F9W40

Tgt Ion	Resp	Lower	Upper
96	41261		
96	100		
61	114.6	85.8	159.4
68	0.0	0.0	0.0

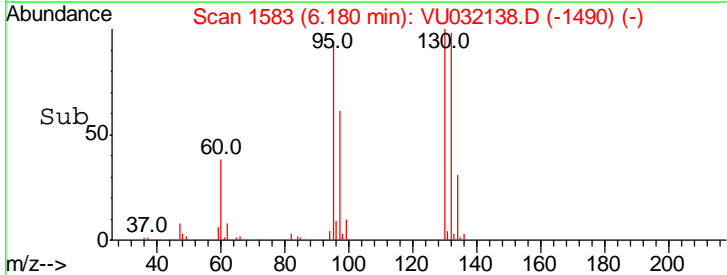
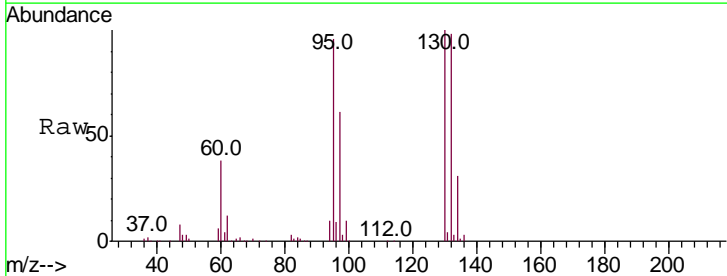
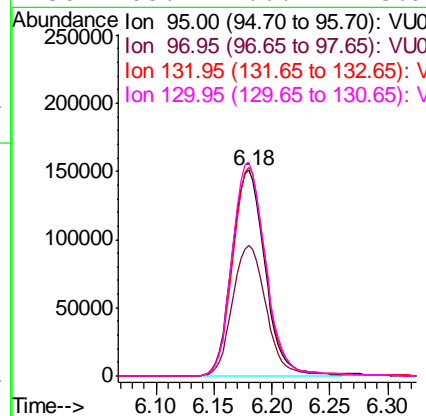
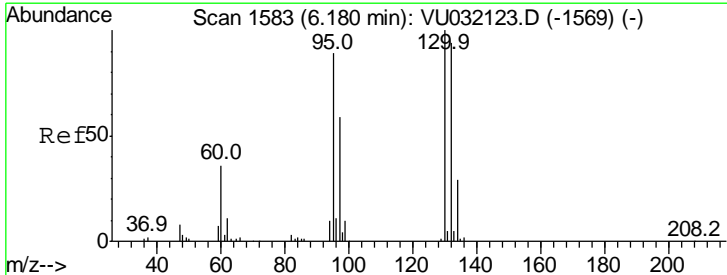
Manual Integrations
 APPROVED

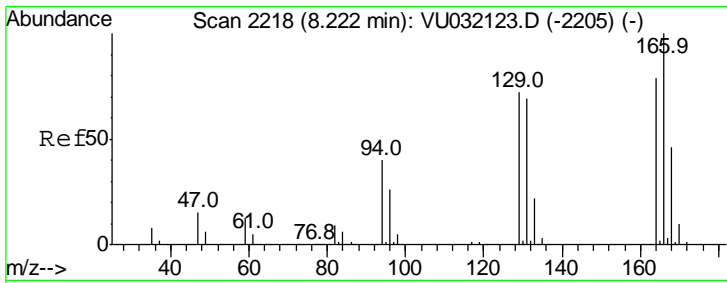
MMDadoda
 5/20/2019 10:12:11 AM



#34
 Trichloroethene
 Concen: 19.726 ug/L
 RT: 6.18 min Scan# 1583
 Delta R.T. -0.00 min
 Lab File: VU032138.D
 Acq: 18 May 2019 07:30

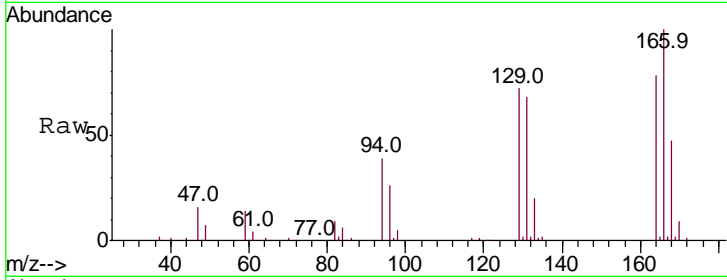
Tgt Ion	Resp	Lower	Upper
95	299171		
95	100		
97	63.4	45.2	84.0
132	101.5	66.1	122.7
130	103.7	66.7	123.9





#47
 Tetrachloroethene
 Concen: 7.138 ug/L
 RT: 8.22 min Scan# 2218
 Delta R.T. -0.00 min
 Lab File: VU032138.D
 Acq: 18 May 2019 07:30

Instrument : MSVOA_U
 ClientSampled : F9W40



Tot Ion: 164 Resp: 80927

Ion	Ratio	Lower	Upper
164	100		
129	92.1	70.3	130.5
131	87.3	64.5	119.9
166	127.5	92.3	171.5

Manual Integrations
APPROVED
 MMDadoda
 5/20/2019 10:12:11 AM

