

Data Path : Z:\voasrv\HPCHEM1\MSVOA_U\Data\VU051823\
 Data File : VU054188.D
 Acq On : 19 May 2023 01:19
 Operator : JC/MD
 Sample : 02844-18
 Misc : 25.0mL/MSVOA_U/WATER
 ALS Vial : 37 Sample Multiplier: 1

Instrument :
 MSVOA_U
 ClientSampleId :
 GBX12

Quant Time: May 19 06:18:51 2023
 Quant Method : Z:\voasrv\HPCHEM1\MSVOA_U\Method\SFAMUTR051823WMA.M
 Quant Title : TRACE VOA SFAM1.0
 QLast Update : Fri May 19 04:28:00 2023
 Response via : Initial Calibration

Compound	R.T.	QIon	Response	Conc	Units	Dev(Min)

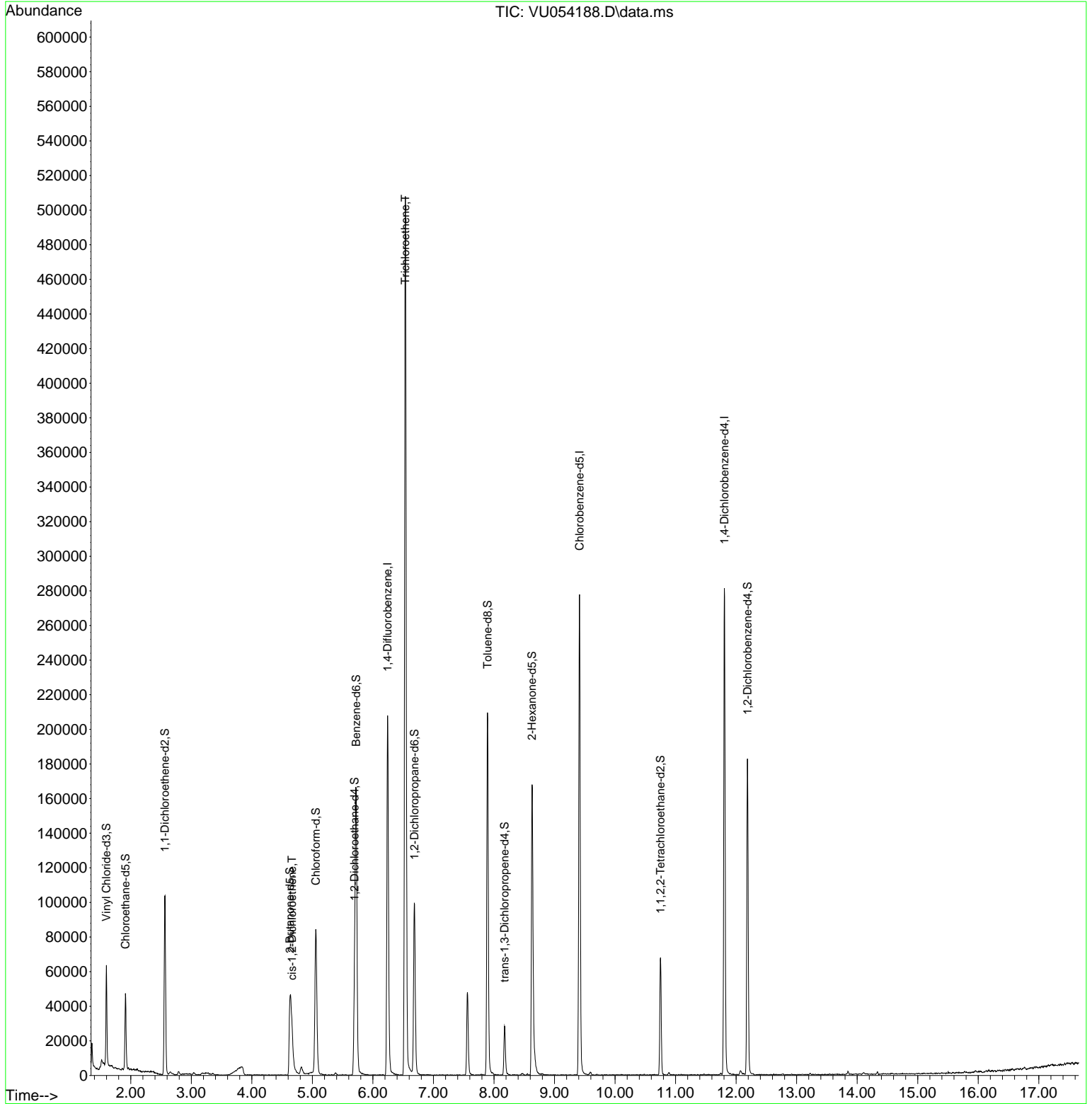
Internal Standards						
1) 1,4-Difluorobenzene	6.243	114	172946	5.000	ug/L	0.00
28) Chlorobenzene-d5	9.414	117	162837	5.000	ug/L	0.00
58) 1,4-Dichlorobenzene-d4	11.806	152	79828	5.000	ug/L	0.00
System Monitoring Compounds						
4) Vinyl Chloride-d3	1.597	65	41730	4.475	ug/L	0.00
Spiked Amount	5.000	Range 40 - 130	Recovery	=	89.600%	
7) Chloroethane-d5	1.912	69	33894	4.859	ug/L	0.00
Spiked Amount	5.000	Range 65 - 130	Recovery	=	97.200%	
11) 1,1-Dichloroethene-d2	2.562	65	19104	4.537	ug/L	0.00
Spiked Amount	5.000	Range 60 - 125	Recovery	=	90.800%	
20) 2-Butanone-d5	4.629	46	81171	48.816	ug/L	0.00
Spiked Amount	50.000	Range 40 - 130	Recovery	=	97.640%	
24) Chloroform-d	5.057	84	78580	4.483	ug/L	0.00
Spiked Amount	5.000	Range 70 - 125	Recovery	=	89.600%	
26) 1,2-Dichloroethane-d4	5.697	65	39595	4.910	ug/L	0.00
Spiked Amount	5.000	Range 70 - 130	Recovery	=	98.200%	
32) Benzene-d6	5.723	84	158849	4.790	ug/L	0.00
Spiked Amount	5.000	Range 70 - 125	Recovery	=	95.800%	
36) 1,2-Dichloropropane-d6	6.687	67	48606	5.071	ug/L	0.00
Spiked Amount	5.000	Range 60 - 140	Recovery	=	101.400%	
41) Toluene-d8	7.893	98	139828	4.465	ug/L	0.00
Spiked Amount	5.000	Range 70 - 130	Recovery	=	89.400%	
43) trans-1,3-Dichloroprop...	8.176	79	17539	4.530	ug/L	0.00
Spiked Amount	5.000	Range 55 - 130	Recovery	=	90.600%	
46) 2-Hexanone-d5	8.629	63	60347	52.354	ug/L	0.00
Spiked Amount	50.000	Range 45 - 130	Recovery	=	104.700%	
56) 1,1,2,2-Tetrachloroeth...	10.751	84	33734	4.910	ug/L	0.00
Spiked Amount	5.000	Range 65 - 120	Recovery	=	98.200%	
66) 1,2-Dichlorobenzene-d4	12.189	152	50786	5.214	ug/L	0.00
Spiked Amount	5.000	Range 80 - 120	Recovery	=	104.200%	
Target Compounds						
22) cis-1,2-Dichloroethene	4.665	96	7015	0.557	ug/L	98
34) Trichloroethene	6.536	95	177188	14.295	ug/L	98

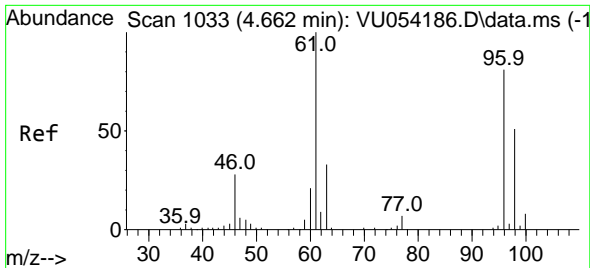
(#) = qualifier out of range (m) = manual integration (+) = signals summed

Data Path : Z:\voasrv\HPCHEM1\MSVOA_U\Data\VU051823\
 Data File : VU054188.D
 Acq On : 19 May 2023 01:19
 Operator : JC/MD
 Sample : 02844-18
 Misc : 25.0mL/MSVOA_U/WATER
 ALS Vial : 37 Sample Multiplier: 1

Instrument :
 MSVOA_U
 ClientSampleId :
 GBX12

Quant Time: May 19 06:18:51 2023
 Quant Method : Z:\voasrv\HPCHEM1\MSVOA_U\Method\SFAMUTR051823WMA.M
 Quant Title : TRACE VOA SFAM1.0
 QLast Update : Fri May 19 04:28:00 2023
 Response via : Initial Calibration

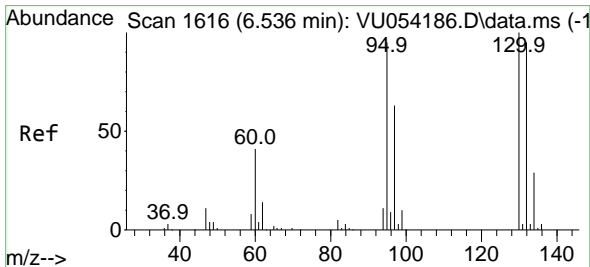
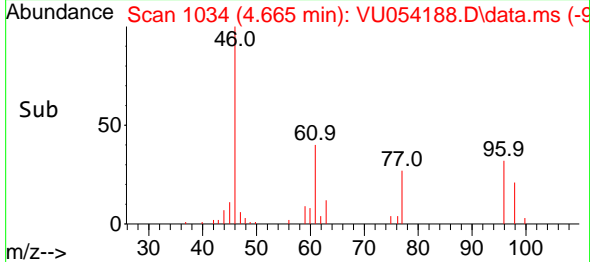
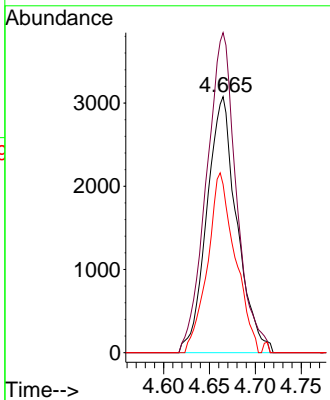
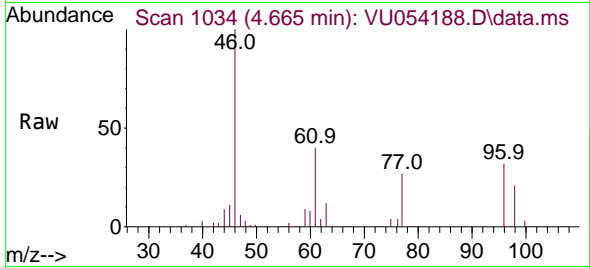




#22
 cis-1,2-Dichloroethene
 Concen: 0.557 ug/L
 RT: 4.665 min Scan# 1034
 Delta R.T. 0.003 min
 Lab File: VU054188.D
 Acq: 19 May 2023 01:19

Instrument : MSVOA_U
 ClientSampleId : GBX12

Tgt Ion	Resp	Lower	Upper
96	7015		
96	100		
61	125.0	85.0	157.8
98	65.7	45.8	85.0



#34
 Trichloroethene
 Concen: 14.295 ug/L
 RT: 6.536 min Scan# 1616
 Delta R.T. 0.000 min
 Lab File: VU054188.D
 Acq: 19 May 2023 01:19

Tgt Ion	Resp	Lower	Upper
95	177188		
95	100		
97	62.8	45.8	85.0
132	97.5	70.1	130.3
130	104.2	72.4	134.5

