

Data Path : Z:\voasrv\HPCHEM1\MSVOA_U\Data\VU051823\
 Data File : VU054175.D
 Acq On : 18 May 2023 19:16
 Operator : JC/MD
 Sample : 02844-09
 Misc : 25.0mL/MSVOA_U/WATER
 ALS Vial : 22 Sample Multiplier: 1

Instrument :
 MSVOA_U
 ClientSampleId :
 GBX03

Integration Parameters: rteint.p
 Integrator: RTE
 Smoothing : ON
 Sampling : 1
 Start Thrs : 0.1
 Stop Thrs : 0
 Filtering: 5
 Min Area: 3 % of largest Peak
 Max Peaks: 100
 Peak Location: TOP

If leading or trailing edge < 100 prefer < Baseline drop else tangent >
 Peak separation: 5

Method : Z:\voasrv\HPCHEM1\MSVOA_U\Method\SFAMUTR051823WMA.M
 Title : TRACE VOA SFAM1.0

Signal : TIC: VU054175.D\data.ms

peak #	R.T. min	first scan	max scan	last scan	PK TY	peak height	corr. area	corr. % max.	% of total
1	1.359	3	6	29	rVB2	53408	58421	11.97%	1.247%
2	1.597	41	80	92	rBV2	95915	261240	53.52%	5.576%
3	1.912	171	178	192	rVB	48246	67795	13.89%	1.447%
4	2.202	262	268	282	rVB2	14091	21236	4.35%	0.453%
5	2.565	367	381	393	rBV	109429	179508	36.78%	3.831%
6	2.646	395	406	430	rVB2	23412	68069	13.95%	1.453%
7	2.867	438	475	479	rBV	46047	186022	38.11%	3.970%
8	4.629	1011	1023	1046	rBV	48337	142603	29.22%	3.044%
9	4.809	1069	1079	1106	rVB2	15421	39052	8.00%	0.834%
10	5.057	1141	1156	1176	rBV	89981	212109	43.46%	4.527%
11	5.719	1340	1362	1387	rBV2	177964	453549	92.92%	9.680%
12	6.243	1512	1525	1544	rBV	211108	403412	82.65%	8.610%
13	6.530	1605	1614	1626	rBV6	4332	8708	1.78%	0.186%
14	6.684	1649	1662	1688	rBV	107342	208847	42.79%	4.457%
15	7.562	1923	1935	1954	rBV	53935	94441	19.35%	2.016%
16	7.893	2025	2038	2057	rBV	223105	390918	80.09%	8.343%
17	8.176	2115	2126	2148	rBV2	29703	53202	10.90%	1.136%
18	8.629	2254	2267	2300	rBV2	176059	354939	72.72%	7.576%
19	8.935	2347	2362	2380	rBV3	12451	28829	5.91%	0.615%
20	9.414	2498	2511	2533	rBV	285767	488104	100.00%	10.418%
21	10.751	2916	2927	2942	rBV	71693	118201	24.22%	2.523%
22	11.806	3243	3255	3282	rBV	302749	483241	99.00%	10.314%
23	12.066	3325	3336	3354	rBV3	9086	24969	5.12%	0.533%
24	12.189	3362	3374	3392	rVB	203467	331492	67.91%	7.075%
25	16.889	4828	4836	4842	rBV8	4456	6393	1.31%	0.136%

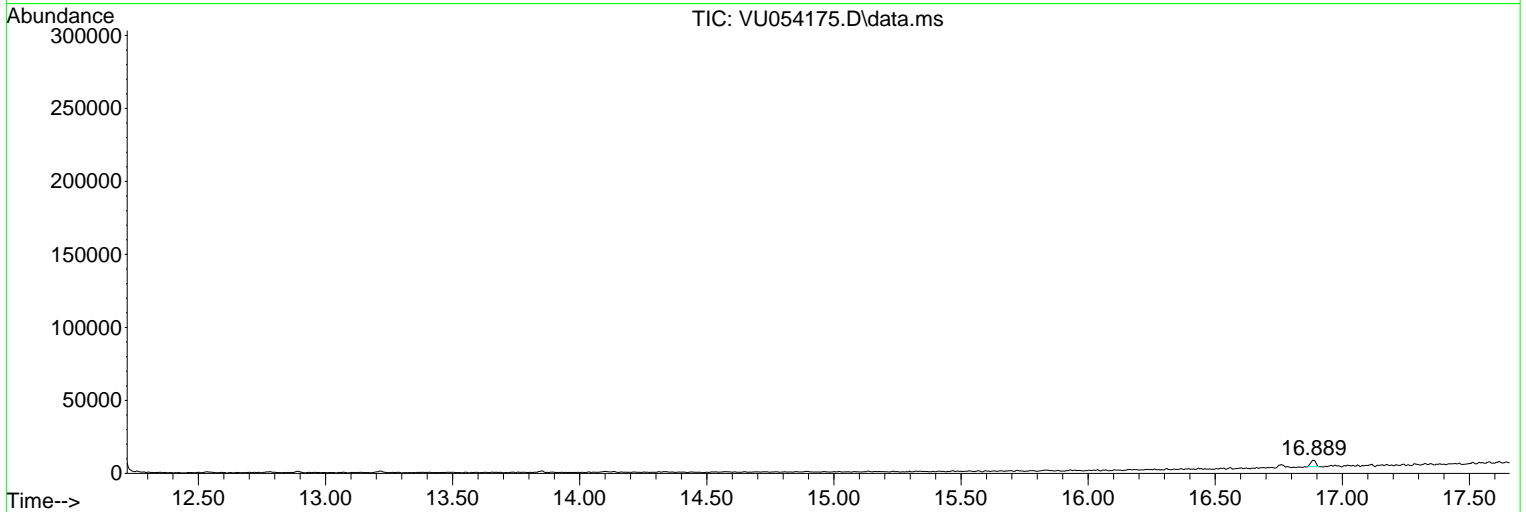
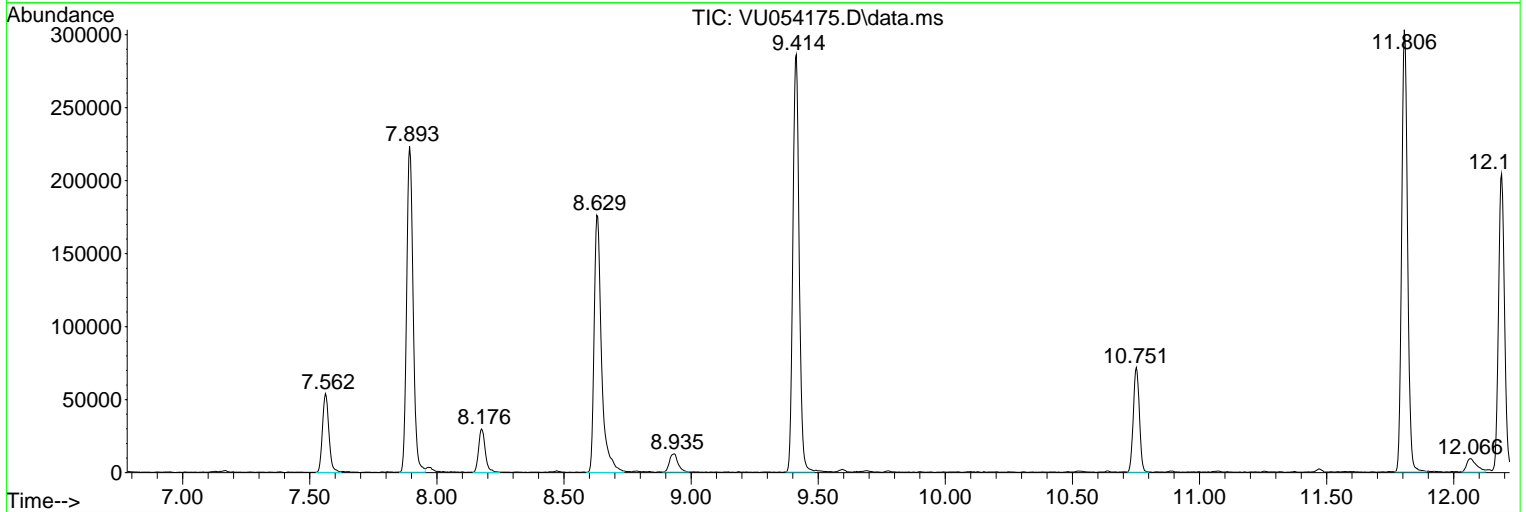
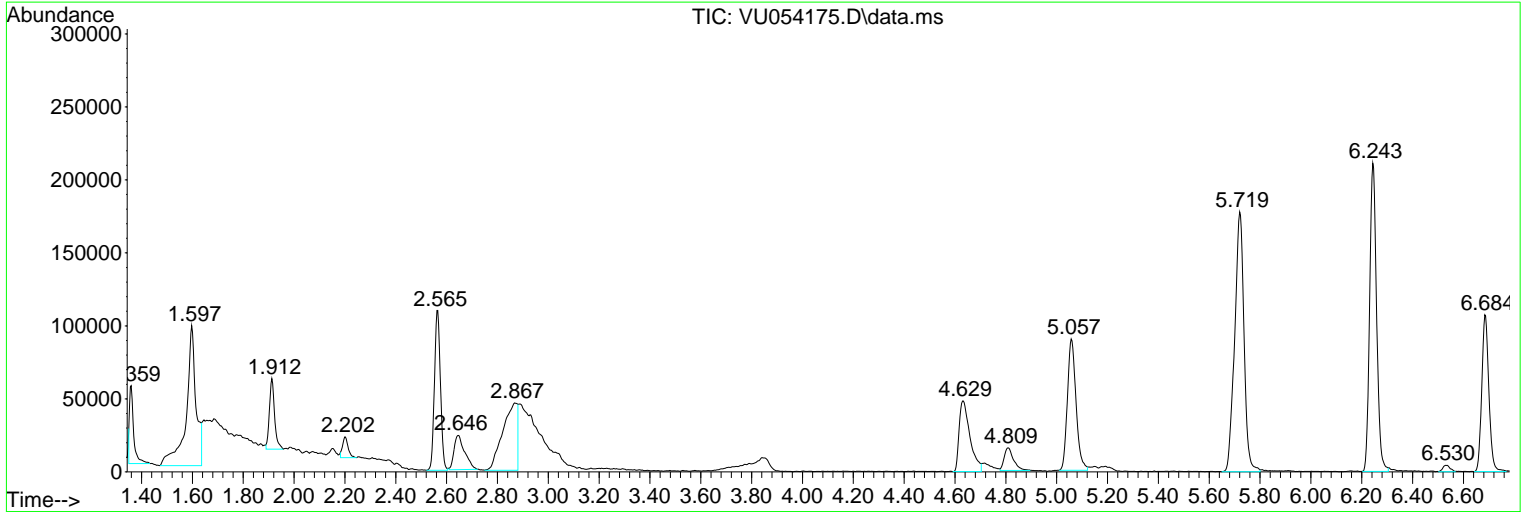
Sum of corrected areas: 4685300

Data Path : Z:\voasrv\HPCHEM1\MSVOA_U\Data\VU051823\
 Data File : VU054175.D
 Acq On : 18 May 2023 19:16
 Operator : JC/MD
 Sample : 02844-09
 Misc : 25.0mL/MSVOA_U/WATER
 ALS Vial : 22 Sample Multiplier: 1

Instrument :
 MSVOA_U
 ClientSampleId :
 GBX03

Quant Method : Z:\voasrv\HPCHEM1\MSVOA_U\Method\SFAMUTR051823WMA.M
 Quant Title : TRACE VOA SFAM1.0

TIC Library : C:\Database\NIST20.L
 TIC Integration Parameters: LSCINT.P



Data Path : Z:\voasrv\HPCHEM1\MSVOA_U\Data\VU051823\
 Data File : VU054175.D
 Acq On : 18 May 2023 19:16
 Operator : JC/MD
 Sample : 02844-09
 Misc : 25.0mL/MSVOA_U/WATER
 ALS Vial : 22 Sample Multiplier: 1

Instrument :
 MSVOA_U
 ClientSampleId :
 GBX03

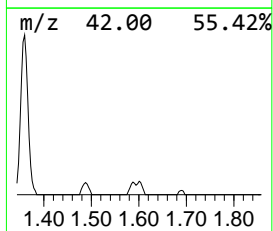
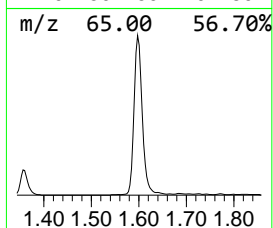
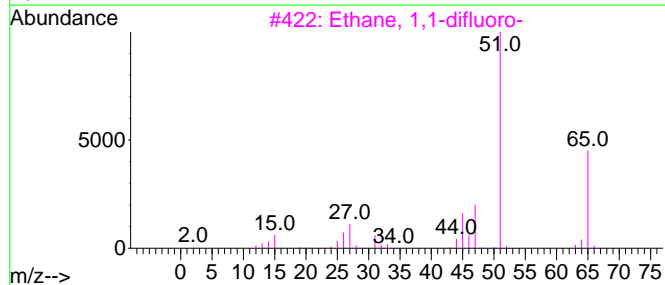
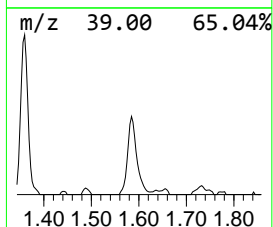
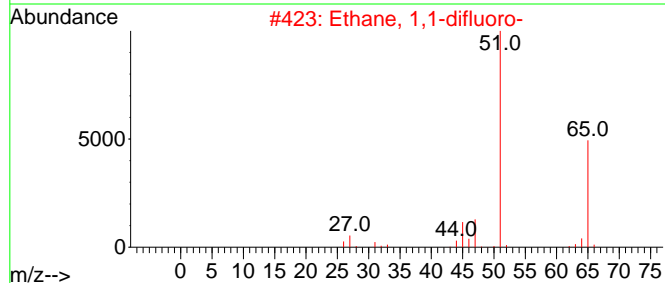
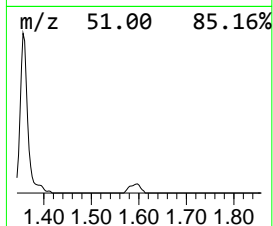
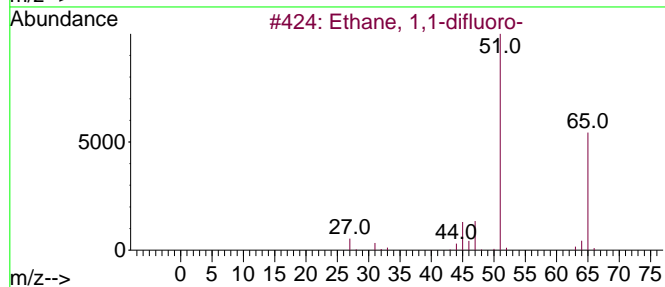
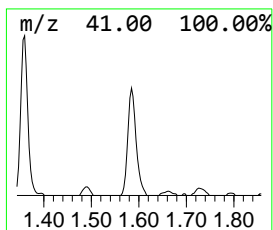
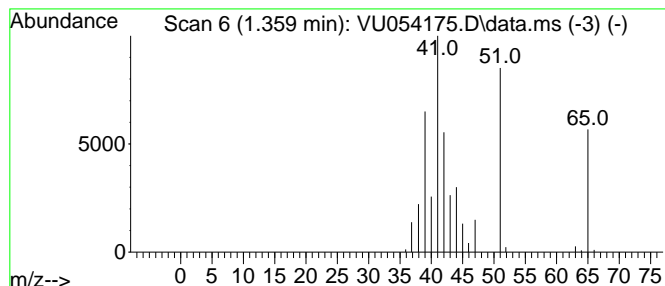
Quant Method : Z:\voasrv\HPCHEM1\MSVOA_U\Method\SFAMUTR051823WMA.M
 Quant Title : TRACE VOA SFAM1.0

TIC Library : C:\Database\NIST20.L
 TIC Integration Parameters: LSCINT.P

 Peak Number 1 Ethane, 1,1-difluoro- Concentration Rank 3

R.T.	EstConc	Area	Relative to ISTD	R.T.
1.359	0.72 ug/L	58421	1,4-Difluorobenzene	6.243

Hit#	of	5	Tentative ID	MW	MolForm	CAS#	Qual
1			Ethane, 1,1-difluoro-	66	C2H4F2	000075-37-6	58
2			Ethane, 1,1-difluoro-	66	C2H4F2	000075-37-6	58
3			Ethane, 1,1-difluoro-	66	C2H4F2	000075-37-6	32
4			Propene	42	C3H6	000115-07-1	7
5			Cyclopropene	40	C3H4	002781-85-3	4



Data Path : Z:\voasrv\HPCHEM1\MSVOA_U\Data\VU051823\
 Data File : VU054175.D
 Acq On : 18 May 2023 19:16
 Operator : JC/MD
 Sample : 02844-09
 Misc : 25.0mL/MSVOA_U/WATER
 ALS Vial : 22 Sample Multiplier: 1

Instrument :
 MSVOA_U
 ClientSampleId :
 GBX03

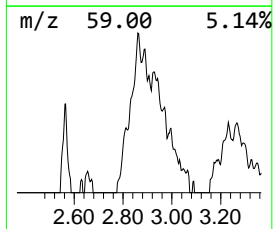
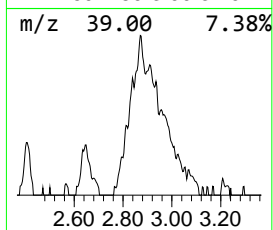
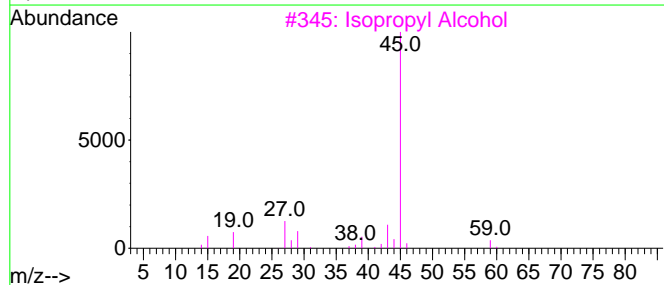
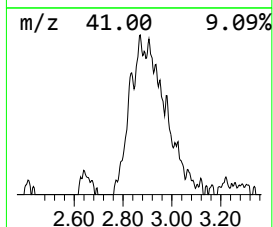
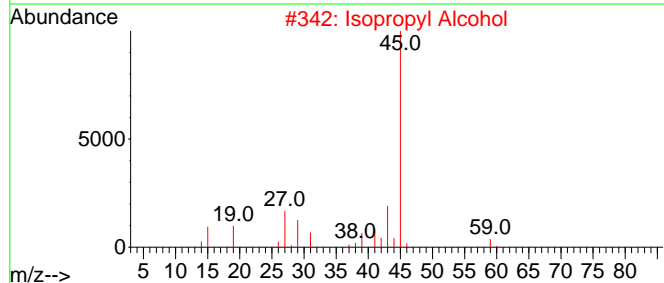
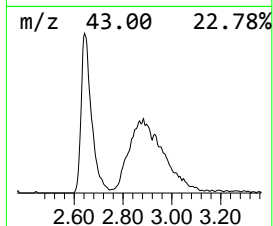
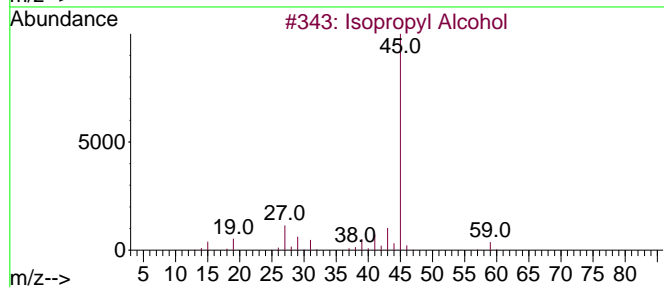
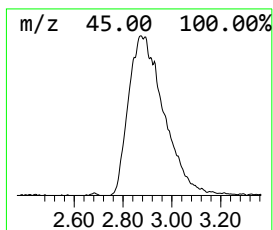
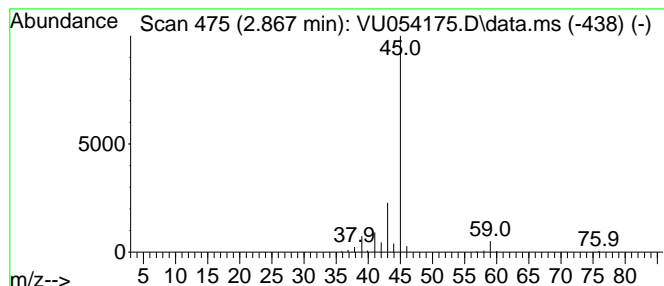
Quant Method : Z:\voasrv\HPCHEM1\MSVOA_U\Method\SFAMUTR051823WMA.M
 Quant Title : TRACE VOA SFAM1.0

TIC Library : C:\Database\NIST20.L
 TIC Integration Parameters: LSCINT.P

 Peak Number 2 Isopropyl Alcohol Concentration Rank 1

R.T.	EstConc	Area	Relative to ISTD	R.T.
2.867	2.31 ug/L	186022	1,4-Difluorobenzene	6.243

Hit#	of	5	Tentative ID	MW	MolForm	CAS#	Qual
1			Isopropyl Alcohol	60	C3H8O	000067-63-0	86
2			Isopropyl Alcohol	60	C3H8O	000067-63-0	78
3			Isopropyl Alcohol	60	C3H8O	000067-63-0	64
4			Isopropyl Alcohol	60	C3H8O	000067-63-0	56
5			Propane, 2-ethoxy-	88	C5H12O	000625-54-7	43



Data Path : Z:\voasrv\HPCHEM1\MSVOA_U\Data\VU051823\
Data File : VU054175.D
Acq On : 18 May 2023 19:16
Operator : JC/MD
Sample : 02844-09
Misc : 25.0mL/MSVOA_U/WATER
ALS Vial : 22 Sample Multiplier: 1

Instrument :
MSVOA_U
ClientSampleId :
GBX03

Quant Method : Z:\voasrv\HPCHEM1\MSVOA_U\Method\SFAMUTR051823WMA.M
Quant Title : TRACE VOA SFAM1.0

TIC Library : C:\Database\NIST20.L
TIC Integration Parameters: LSCINT.P

TIC Top Hit name	RT	EstConc	Units	Response	--Internal Standard--			
					#	RT	Resp	Conc
Ethane, 1,1-dif...	1.359	0.7	ug/L	58421	1	6.243	403412	5.0
Isopropyl Alcohol	2.867	2.3	ug/L	186022	1	6.243	403412	5.0