

Data File : VU032164.D
 Acq On : 20 May 2019 19:04
 Operator : JC/SP
 Sample : K2888-15
 Misc : 25.0mL/MSVOA_U/WATER
 ALS Vial : 20 Sample Multiplier: 1

Instrument :
 MSVOA_U
 ClientSampled :
 C0BP7

Quant Time: May 21 08:34:17 2019
 Quant Method : Z:\VOASRV\HPCHEM1\MSVOA_U\METHOD\SOMUTR051619WMA.M
 Quant Title : TRACE VOA SOM01.0
 QLast Update : Tue May 21 08:29:49 2019
 Response via : Initial Calibration

Internal Standards	R.T.	QIon	Response	Conc	Units	Dev(Min)
1) 1,4-Difluorobenzene	5.88	114	346854	5.00	ug/L	0.00
28) Chlorobenzene-d5	9.09	117	364718	5.00	ug/L	0.00
60) 1,4-Dichlorobenzene-d4	11.48	152	149434	5.00	ug/L	0.00

System Monitoring Compounds

4) Vinyl Chloride-d3	1.40	65	87684	3.00	ug/L	0.00
Spiked Amount	5.000	Range	40 - 130	Recovery	=	60.00%
7) Chloroethane-d5	1.67	69	87849	3.52	ug/L	0.00
Spiked Amount	5.000	Range	65 - 130	Recovery	=	70.40%
11) 1,1-Dichloroethene-d2	2.27	63	134299	2.88	ug/L	0.00
Spiked Amount	5.000	Range	60 - 125	Recovery	=	57.60%#
20) 2-Butanone-d5	4.19	46	237965	41.49	ug/L	-0.01
Spiked Amount	50.000	Range	40 - 130	Recovery	=	82.98%
24) Chloroform-d	4.64	84	200624	3.91	ug/L	0.00
Spiked Amount	5.000	Range	70 - 125	Recovery	=	78.20%
26) 1,2-Dichloroethane-d4	5.31	65	102504	3.87	ug/L	0.00
Spiked Amount	5.000	Range	70 - 130	Recovery	=	77.40%
32) Benzene-d6	5.33	84	401976	3.61	ug/L	0.00
Spiked Amount	5.000	Range	70 - 125	Recovery	=	72.20%
36) 1,2-Dichloropropane-d6	6.32	67	118717	3.65	ug/L	0.00
Spiked Amount	5.000	Range	60 - 140	Recovery	=	73.00%
41) Toluene-d8	7.56	98	319561	3.26	ug/L	0.00
Spiked Amount	5.000	Range	70 - 130	Recovery	=	65.20%#
43) trans-1,3-Dichloropropene-	7.85	79	40391	3.45	ug/L	0.00
Spiked Amount	5.000	Range	55 - 130	Recovery	=	69.00%
46) 2-Hexanone-d5	8.31	63	200273	37.88	ug/L	0.00
Spiked Amount	50.000	Range	45 - 130	Recovery	=	75.76%
57) 1,1,2,2-Tetrachloroethane-	10.43	84	105314	3.96	ug/L	0.00
Spiked Amount	5.000	Range	65 - 120	Recovery	=	79.20%
64) 1,2-Dichlorobenzene-d4	11.86	152	134260	4.24	ug/L	0.00
Spiked Amount	5.000	Range	80 - 120	Recovery	=	84.80%

Target Compounds

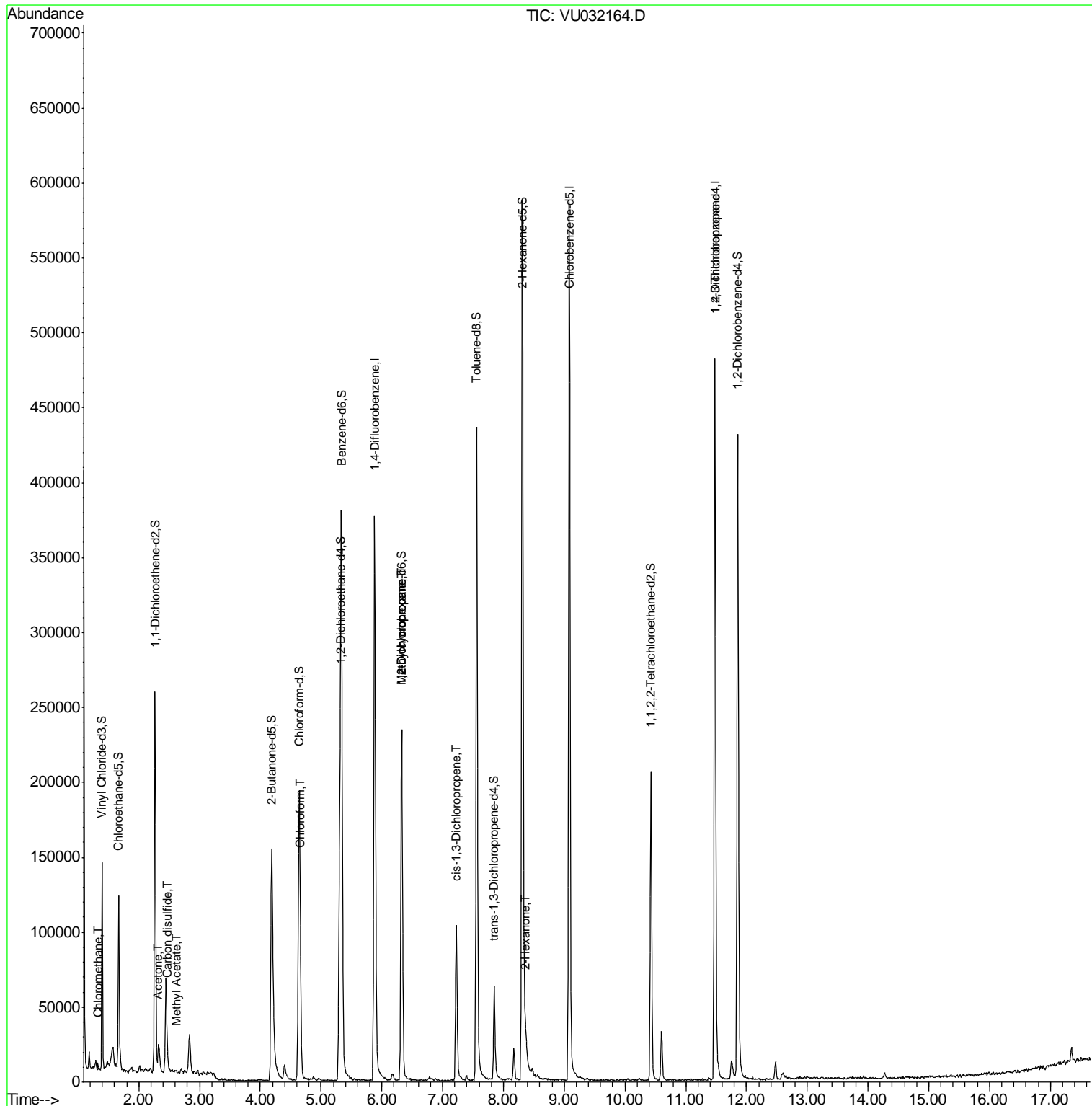
						Qvalue
3) Chloromethane	1.33	50	3482	0.209	ug/L	90
13) Acetone	2.32	43	12667	6.727	ug/L	93
14) Carbon disulfide	2.47	76	7665	0.173	ug/L	99
15) Methyl Acetate	2.61	43	1237	0.229	ug/L #	72
25) Chloroform	4.67	83	3474	0.137	ug/L	95
35) Methylcyclohexane	6.32	83	30556	1.397	ug/L #	20
37) 1,2-Dichloropropane	6.32	63	12574	0.918	ug/L #	86
39) cis-1,3-Dichloropropene	7.22	75	2874	0.152	ug/L	97
48) 2-Hexanone	8.37	43	10513	2.135	ug/L #	76
59) 1,2,3-Trichloropropane	11.48	75	14265	1.640	ug/L #	79

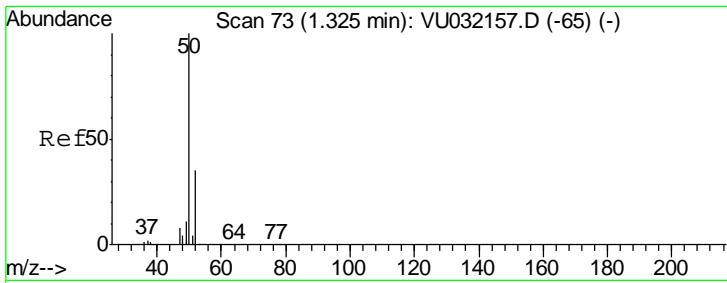
(#) = qualifier out of range (m) = manual integration (+) = signals summed

Data File : VU032164.D
Acq On : 20 May 2019 19:04
Operator : JC/SP
Sample : K2888-15
Misc : 25.0mL/MSVOA_U/WATER
ALS Vial : 20 Sample Multiplier: 1

Instrument :
MSVOA_U
ClientSampled :
C0BP7

Quant Time: May 21 08:34:17 2019
Quant Method : Z:\VOASRV\HPCHEM1\MSVOA_U\METHOD\SOMUTR051619WMA.M
Quant Title : TRACE VOA SOM01.0
QLast Update : Tue May 21 08:29:49 2019
Response via : Initial Calibration

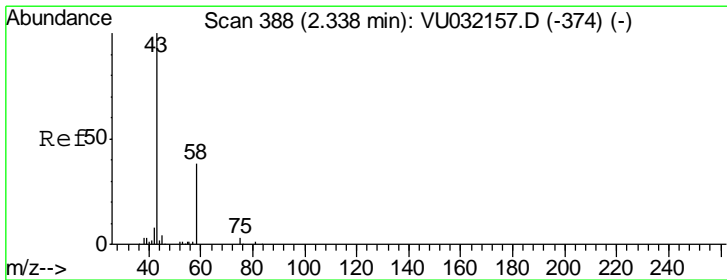
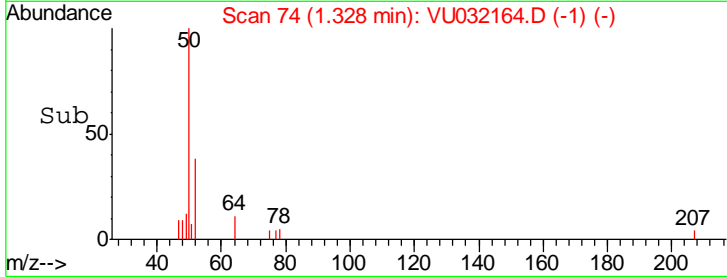
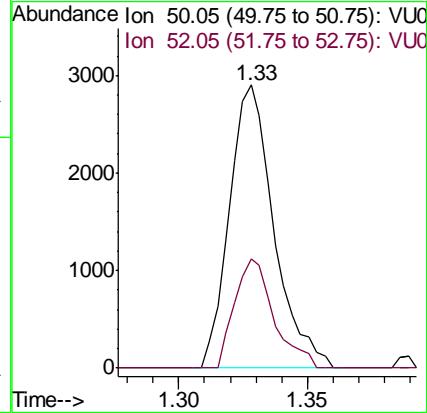
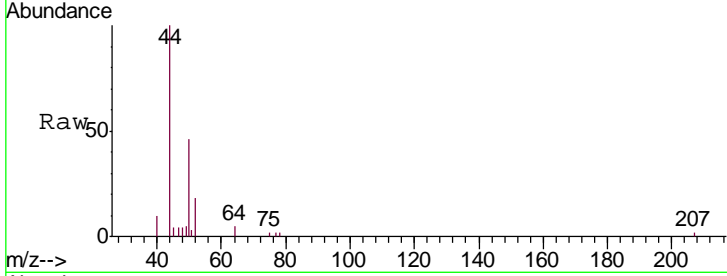




#3
 Chloromethane
 Concen: 0.209 ug/L
 RT: 1.33 min Scan# 74
 Delta R.T. 0.00 min
 Lab File: VU032164.D
 Acq: 20 May 2019 19:04

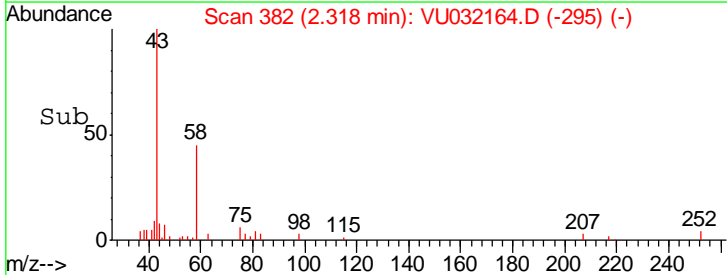
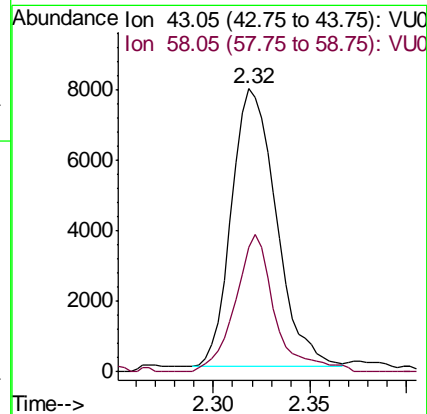
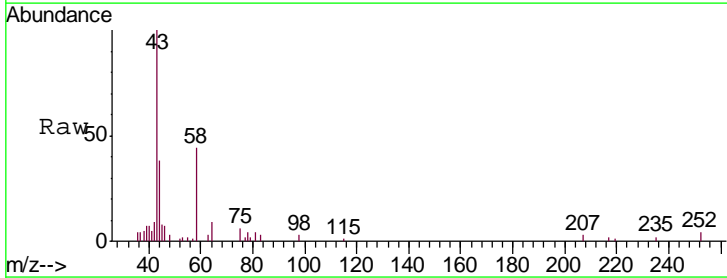
Instrument : MSVOA_U
 ClientSampled : C0BP7

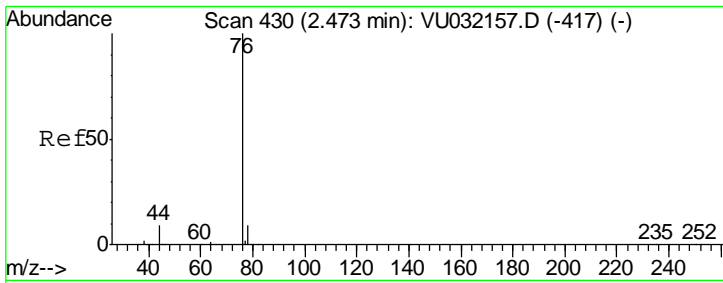
Tgt Ion: 50 Resp: 3482
 Ion Ratio Lower Upper
 50 100
 52 38.5 23.2 43.0



#13
 Acetone
 Concen: 6.727 ug/L
 RT: 2.32 min Scan# 382
 Delta R.T. -0.02 min
 Lab File: VU032164.D
 Acq: 20 May 2019 19:04

Tgt Ion: 43 Resp: 12667
 Ion Ratio Lower Upper
 43 100
 58 43.9 0.0 78.8

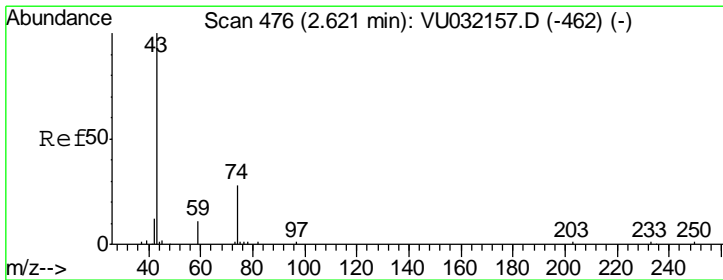
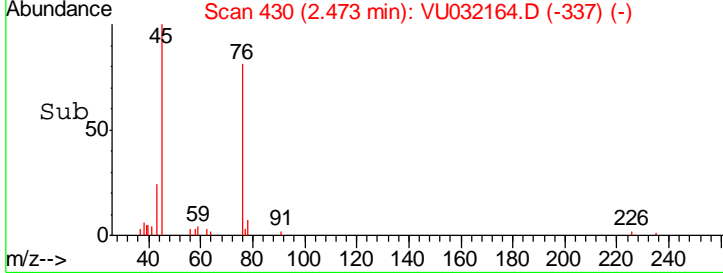
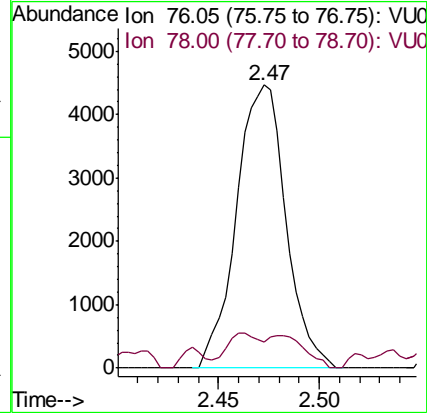
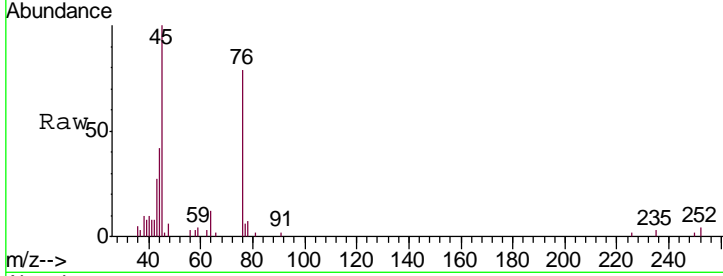




#14
 Carbon disulfide
 Concen: 0.173 ug/L
 RT: 2.47 min Scan# 430
 Delta R.T. -0.00 min
 Lab File: VU032164.D
 Acq: 20 May 2019 19:04

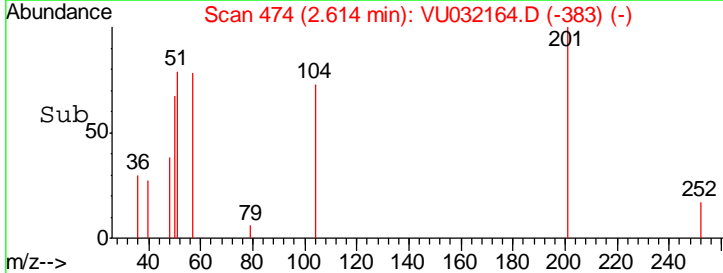
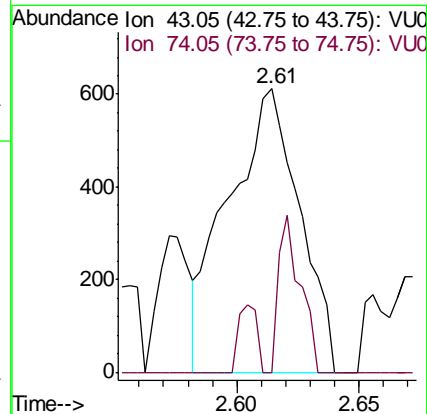
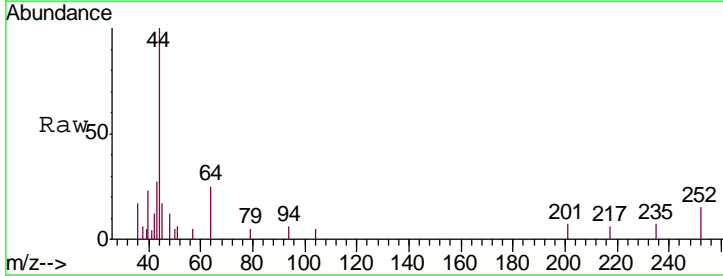
Instrument : MSVOA_U
 ClientSampled : C0BP7

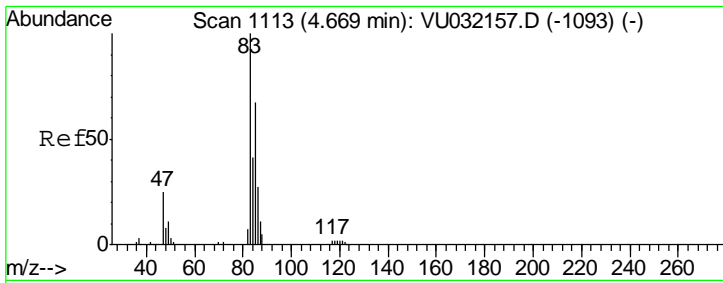
Tgt Ion	Resp	Lower	Upper
76	100		
78	9.2	7.8	11.6



#15
 Methyl Acetate
 Concen: 0.229 ug/L
 RT: 2.61 min Scan# 474
 Delta R.T. -0.01 min
 Lab File: VU032164.D
 Acq: 20 May 2019 19:04

Tgt Ion	Resp	Lower	Upper
43	100		
74	17.3	26.4	39.6#



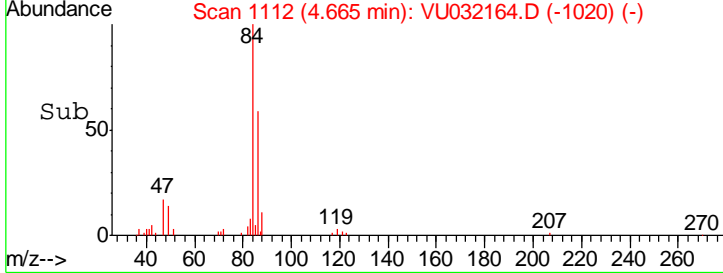
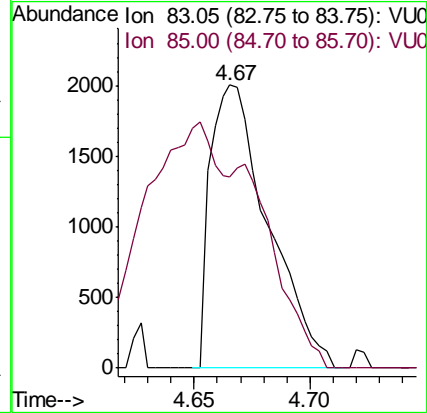
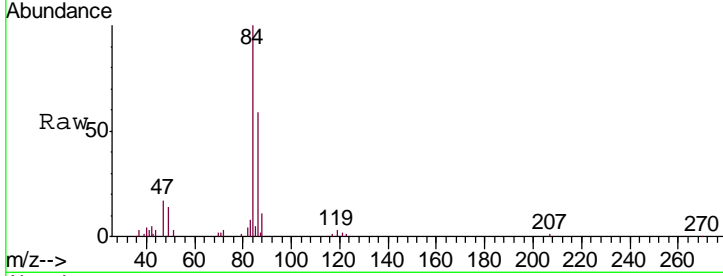


#25
 Chloroform
 Concen: 0.137 ug/L
 RT: 4.67 min Scan# 1112
 Delta R.T. -0.00 min
 Lab File: VU032164.D
 Acq: 20 May 2019 19:04

Instrument :
 MSVOA_U
 ClientSampled :
 C0BP7

Tgt Ion: 83 Resp: 3474

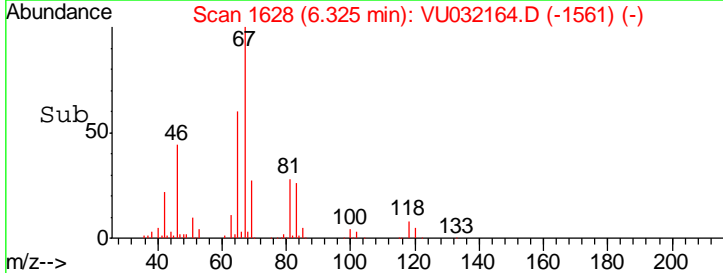
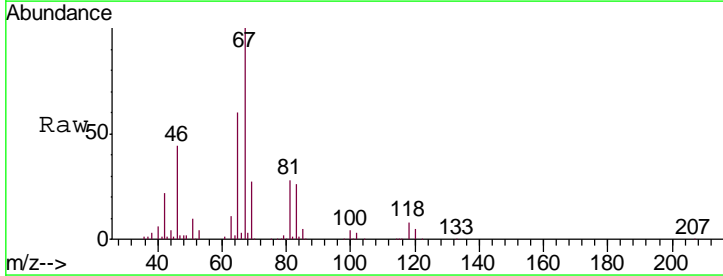
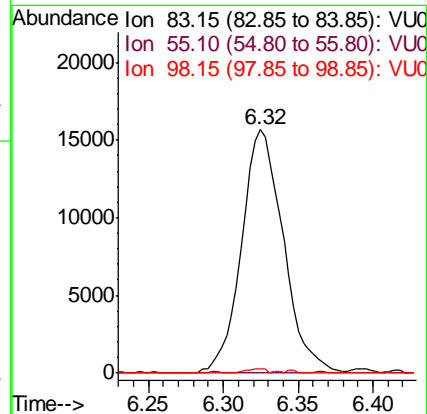
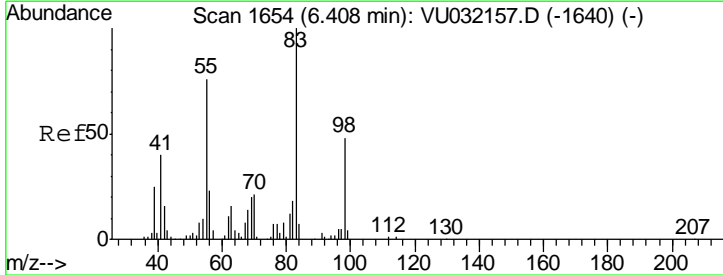
Ion	Ratio	Lower	Upper
83	100		
85	67.7	44.9	83.3

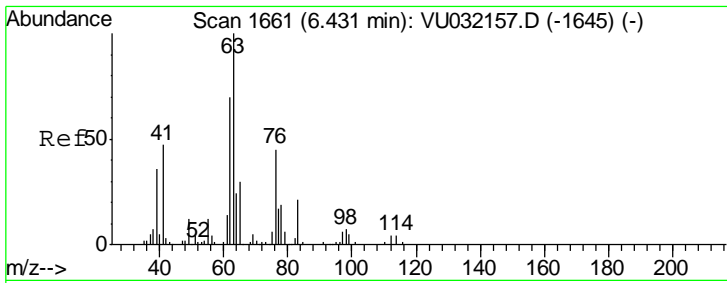


#35
 Methylcyclohexane
 Concen: 1.397 ug/L
 RT: 6.32 min Scan# 1628
 Delta R.T. -0.08 min
 Lab File: VU032164.D
 Acq: 20 May 2019 19:04

Tgt Ion: 83 Resp: 30556

Ion	Ratio	Lower	Upper
83	100		
55	0.1	59.7	89.5#
98	1.0	36.8	55.2#

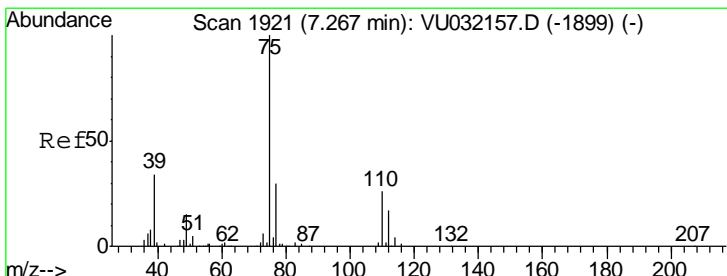
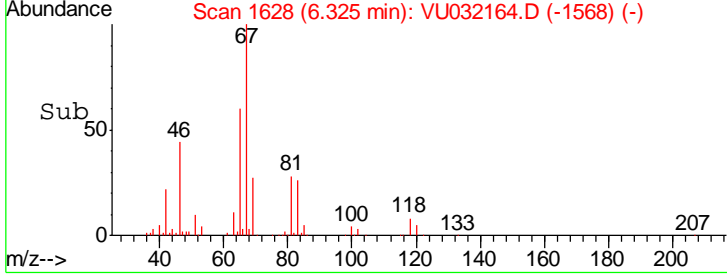
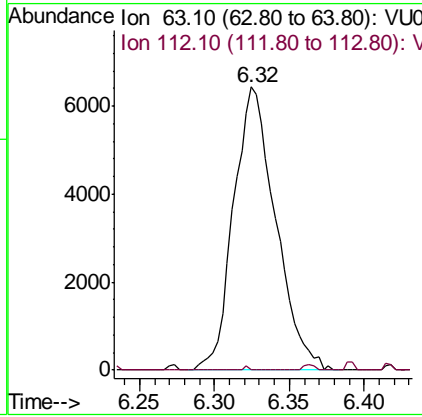
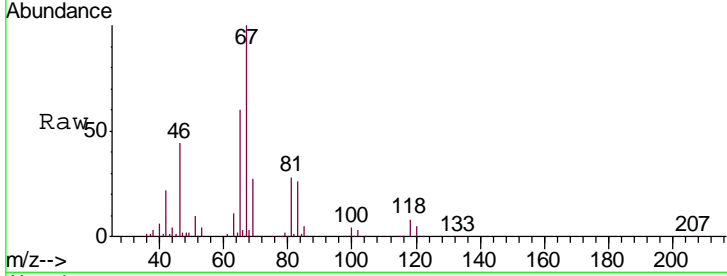




#37
 1,2-Dichloropropane
 Concen: 0.918 ug/L
 RT: 6.32 min Scan# 1628
 Delta R.T. -0.11 min
 Lab File: VU032164.D
 Acq: 20 May 2019 19:04

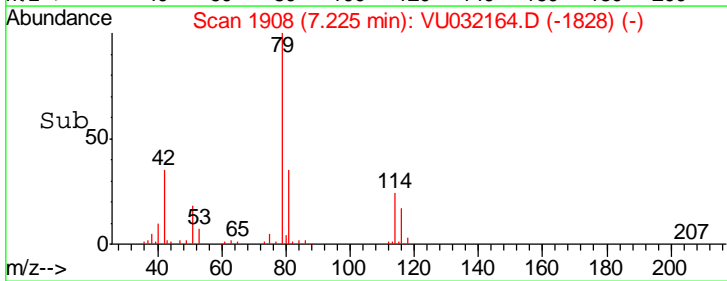
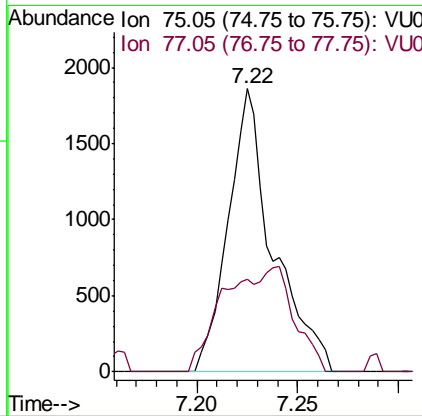
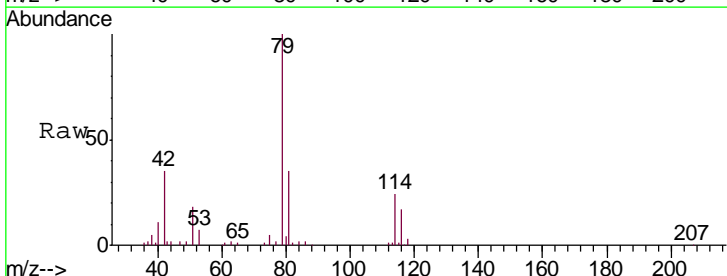
Instrument :
 MSVOA_U
ClientSampled :
 C0BP7

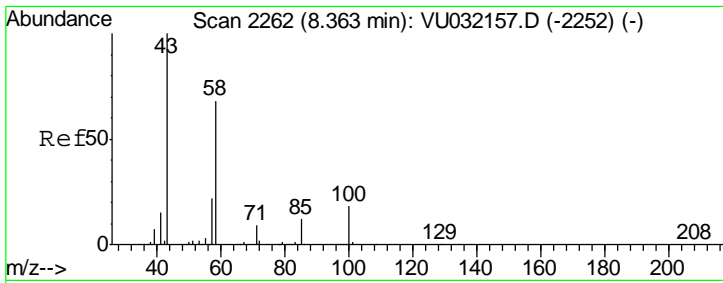
Tgt Ion: 63 Resp: 12574
 Ion Ratio Lower Upper
 63 100
 112 0.2 3.8 5.6#



#39
 cis-1,3-Dichloropropene
 Concen: 0.152 ug/L
 RT: 7.22 min Scan# 1908
 Delta R.T. -0.04 min
 Lab File: VU032164.D
 Acq: 20 May 2019 19:04

Tgt Ion: 75 Resp: 2874
 Ion Ratio Lower Upper
 75 100
 77 32.5 21.7 40.3

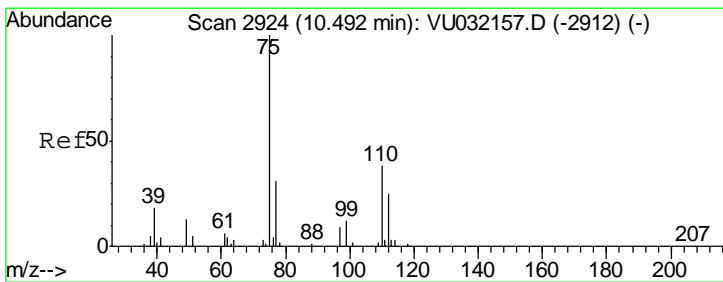
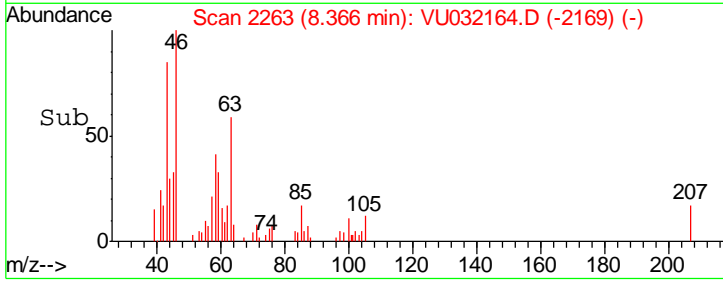
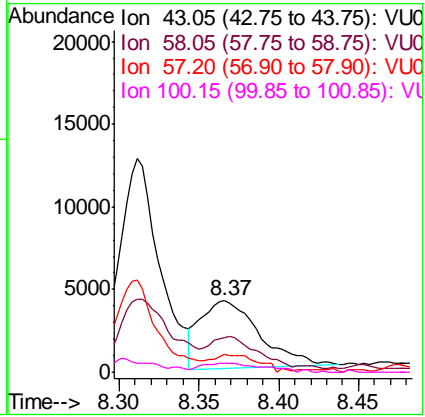
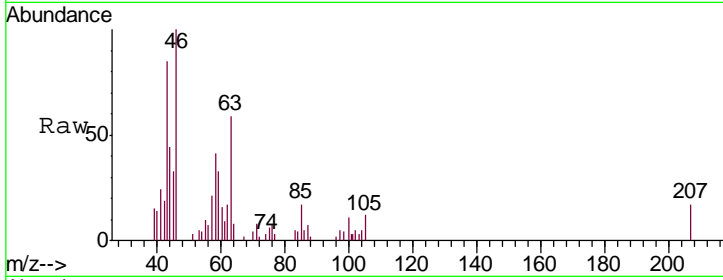




#48
 2-Hexanone
 Concen: 2.135 ug/L
 RT: 8.37 min Scan# 2263
 Delta R.T. 0.00 min
 Lab File: VU032164.D
 Acq: 20 May 2019 19:04

Instrument : MSVOA_U
 ClientSampled : C0BP7

Tgt Ion	Resp	Lower	Upper
43	10513		
43	100		
58	36.8	51.6	77.4#
57	20.3	18.4	27.6
100	13.9	12.2	18.4



#59
 1,2,3-Trichloropropane
 Concen: 1.640 ug/L
 RT: 11.48 min Scan# 3231
 Delta R.T. 0.99 min
 Lab File: VU032164.D
 Acq: 20 May 2019 19:04

Tgt Ion	Resp	Lower	Upper
75	14265		
75	100		
77	44.4	26.2	39.2#

