

Data Path : Z:\VOASRV\HPCHEM1\MSVOA U\DATA\VU052120\
 Data File : VU038267.D
 Acq On : 21 May 2020 16:16
 Operator : JC/MD
 Sample : L2724-13
 Misc : 25.0mL/MSVOA U/WATER
 ALS Vial : 11 Sample Multiplier: 1

Instrument :
 MSVOA_U
 ClientSampled :

Quant Time: May 22 01:05:51 2020
 Quant Method : Z:\VOASRV\HPCHEM1\MSVOA_U\METHOD\SOMUTR050720WMA.M
 Quant Title : TRACE VOA SOM01.0
 QLast Update : Fri May 22 01:03:14 2020
 Response via : Initial Calibration

Internal Standards	R.T.	QIon	Response	Conc	Units	Dev(Min)
1) 1,4-Difluorobenzene	6.32	114	465811	5.00	ug/L	0.04
28) Chlorobenzene-d5	9.45	117	457571	5.00	ug/L	0.01
60) 1,4-Dichlorobenzene-d4	11.83	152	225126	5.00	ug/L	0.00

System Monitoring Compounds

4) Vinyl Chloride-d3	1.64	65	132377	3.11	ug/L	0.03
Spiked Amount	5.000	Range	40 - 130	Recovery	=	62.20%
7) Chloroethane-d5	1.96	69	158048	4.29	ug/L	0.03
Spiked Amount	5.000	Range	65 - 130	Recovery	=	85.80%
11) 1,1-Dichloroethene-d2	2.62	63	202778	2.85	ug/L	0.03
Spiked Amount	5.000	Range	60 - 125	Recovery	=	57.00%#
20) 2-Butanone-d5	4.79	46	462603	44.01	ug/L	0.11
Spiked Amount	50.000	Range	40 - 130	Recovery	=	88.02%
24) Chloroform-d	5.16	84	285416	4.41	ug/L	0.06
Spiked Amount	5.000	Range	70 - 125	Recovery	=	88.20%
26) 1,2-Dichloroethane-d4	5.80	65	160669	4.34	ug/L	0.06
Spiked Amount	5.000	Range	70 - 130	Recovery	=	86.80%
32) Benzene-d6	5.82	84	587792	4.29	ug/L	0.05
Spiked Amount	5.000	Range	70 - 125	Recovery	=	85.80%
36) 1,2-Dichloropropane-d6	6.76	67	199881	4.52	ug/L	0.04
Spiked Amount	5.000	Range	60 - 140	Recovery	=	90.40%
41) Toluene-d8	7.94	98	543255	4.41	ug/L	0.02
Spiked Amount	5.000	Range	70 - 130	Recovery	=	88.20%
43) trans-1,3-Dichloropropene-	8.22	79	70654	3.99	ug/L	0.02
Spiked Amount	5.000	Range	55 - 130	Recovery	=	79.80%
46) 2-Hexanone-d5	8.68	63	464467	55.49	ug/L	0.02
Spiked Amount	50.000	Range	45 - 130	Recovery	=	110.98%
57) 1,1,2,2-Tetrachloroethane-	10.78	84	177235	5.08	ug/L	0.00
Spiked Amount	5.000	Range	65 - 120	Recovery	=	101.60%
64) 1,2-Dichlorobenzene-d4	12.21	152	204889	4.68	ug/L	0.00
Spiked Amount	5.000	Range	80 - 120	Recovery	=	93.60%

Target Compounds

Target Compounds	R.T.	QIon	Response	Conc	Units	Ovalue
8) Chloroethane	1.99	64	299325	9.673	ug/L	95
13) Acetone	2.81	43	24803	3.761	ug/L	84
14) Carbon disulfide	2.85	76	18042	0.156	ug/L #	81
15) Methyl Acetate	3.14	43	178659	9.684	ug/L #	54
16) Methylene chloride	3.04	84	3698	0.098	ug/L #	2
17) Methyl tert-butyl Ether	3.46	73	14777	0.165	ug/L #	1
18) trans-1,2-Dichloroethene	3.42	96	50785	1.439	ug/L	99
19) 1,1-Dichloroethane	3.94	63	21284	0.309	ug/L	94
21) 2-Butanone	4.86	43	18349	1.576	ug/L #	60
30) Cyclohexane	5.48	56	427459	6.906	ug/L	98
33) Benzene	5.86	78	13685298	93.397	ug/L	100
35) Methylcyclohexane	6.83	83	399188	6.724	ug/L	98
38) Bromodichloromethane	7.10	83	7146	0.155	ug/L #	44
42) Toluene	8.01	91	2146809	13.879	ug/L	99
45) 1,1,2-Trichloroethane	8.41	97	10741	0.389	ug/L #	33
48) 2-Hexanone	8.73	43	81637	4.041	ug/L #	37
52) Ethylbenzene	9.60	91	4931081	29.430	ug/L	100

Data Path : Z:\VOASRV\HPCHEM1\MSVOA U\DATA\VU052120\
 Data File : VU038267.D
 Acq On : 21 May 2020 16:16
 Operator : JC/MD
 Sample : L2724-13
 Misc : 25.0mL/MSVOA U/WATER
 ALS Vial : 11 Sample Multiplier: 1

Instrument :
 MSVOA_U
 ClientSampleId :

Quant Time: May 22 01:05:51 2020
 Quant Method : Z:\VOASRV\HPCHEM1\MSVOA_U\METHOD\SOMUTR050720WMA.M
 Quant Title : TRACE VOA SOM01.0
 QLast Update : Fri May 22 01:03:14 2020
 Response via : Initial Calibration

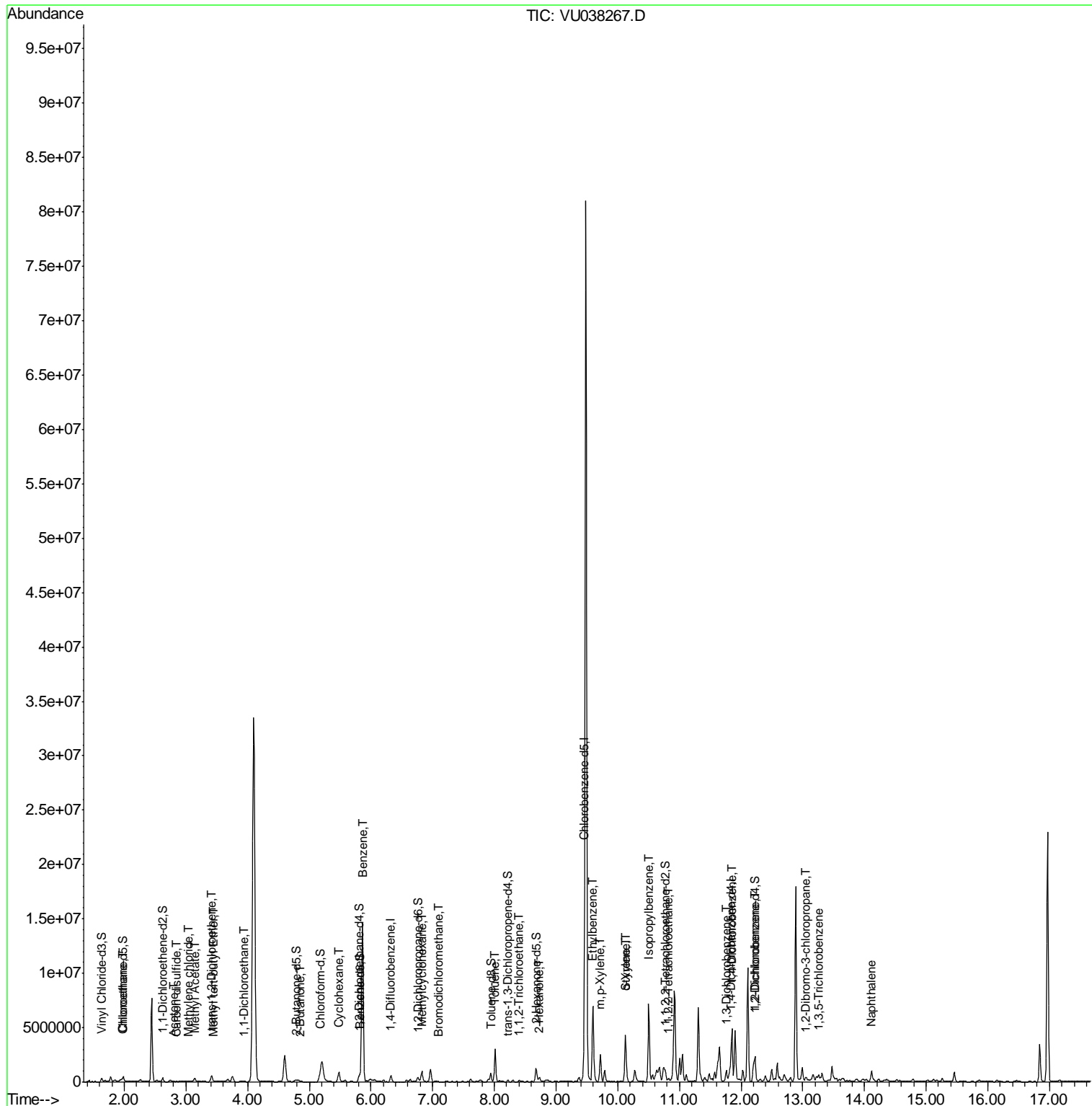
Internal Standards	R.T.	QIon	Response	Conc	Units	Dev(Min)
53) m,p-Xylene	9.72	106	712483	11.090	ug/L	99
54) o-Xylene	10.12	106	1046805	16.852	ug/L	100
55) Styrene	10.13	104	144398	1.385	ug/L #	3
56) Isopropylbenzene	10.50	105	4643760	29.103	ug/L	99
58) 1,1,2,2-Tetrachloroethane	10.81	83	7240	0.206	ug/L #	63
62) 1,3-Dichlorobenzene	11.76	146	368091	5.025	ug/L	100
63) 1,4-Dichlorobenzene	11.85	146	1824720	24.584	ug/L	98
65) 1,2-Dichlorobenzene	12.23	146	757418	10.748	ug/L	99
66) 1,2-Dibromo-3-chloropropan	13.05	75	1295	0.225	ug/L #	8
67) 1,3,5-Trichlorobenzene	13.24	180	4885	0.092	ug/L #	93
69) Naphthalene	14.11	128	703497	6.931	ug/L	99

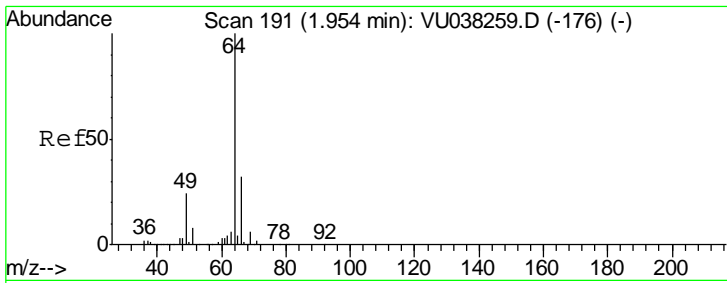
(#) = qualifier out of range (m) = manual integration (+) = signals summed

Data Path : Z:\VOASRV\HPCHEM1\MSVOA U\DATA\VU052120\
 Data File : VU038267.D
 Acq On : 21 May 2020 16:16
 Operator : JC/MD
 Sample : L2724-13
 Misc : 25.0mL/MSVOA U/WATER
 ALS Vial : 11 Sample Multiplier: 1

Instrument :
 MSVOA_U
 ClientSampleID :

Quant Time: May 22 01:05:51 2020
 Quant Method : Z:\VOASRV\HPCHEM1\MSVOA_U\METHOD\SOMUTR050720WMA.M
 Quant Title : TRACE VOA SOM01.0
 QLast Update : Fri May 22 01:03:14 2020
 Response via : Initial Calibration

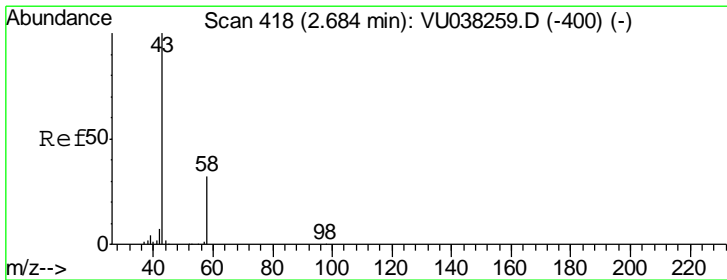
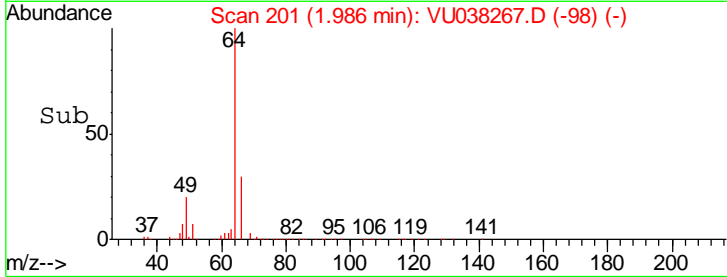
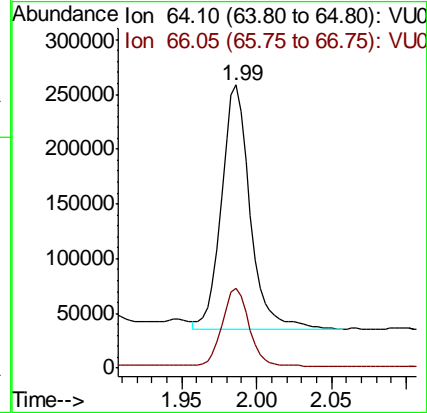
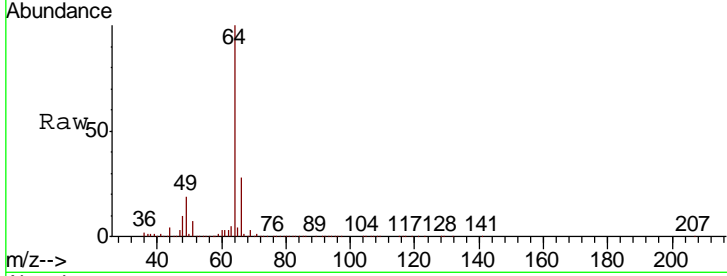




#8
 Chloroethane
 Concen: 9.673 ug/L
 RT: 1.99 min Scan# 201
 Delta R.T. 0.03 min
 Lab File: VU038267.D
 Acq: 21 May 2020 16:16

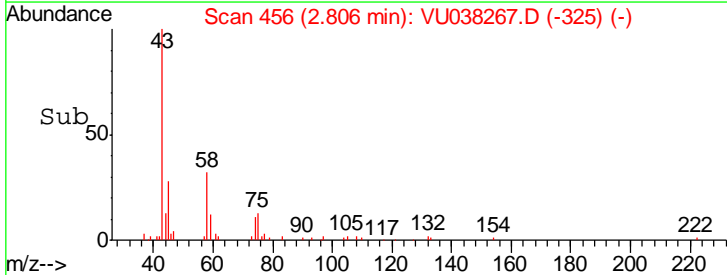
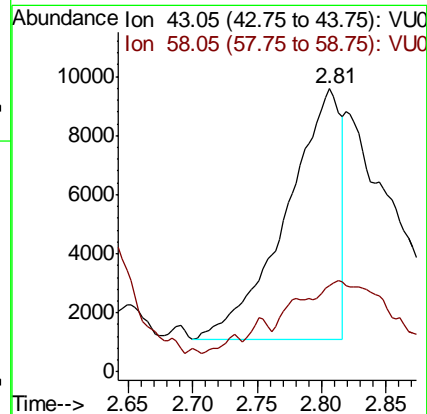
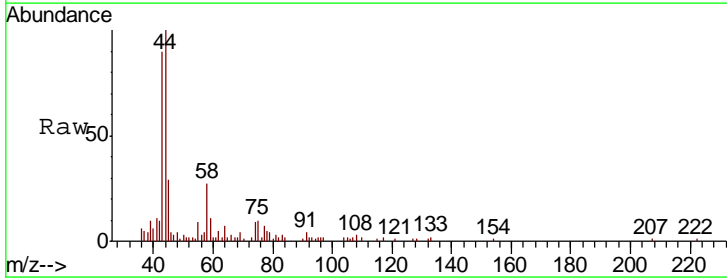
Instrument :
 MSVOA_U
 ClientSampled :

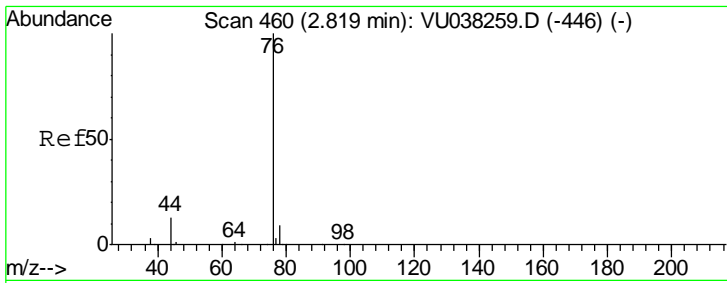
Tgt Ion	Resp	Lower	Upper
64	100		
66	28.3	21.8	40.4



#13
 Acetone
 Concen: 3.761 ug/L
 RT: 2.81 min Scan# 456
 Delta R.T. 0.12 min
 Lab File: VU038267.D
 Acq: 21 May 2020 16:16

Tgt Ion	Resp	Lower	Upper
43	100		
58	40.5	0.0	63.6

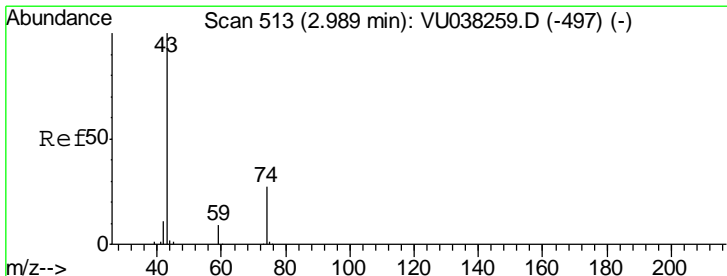
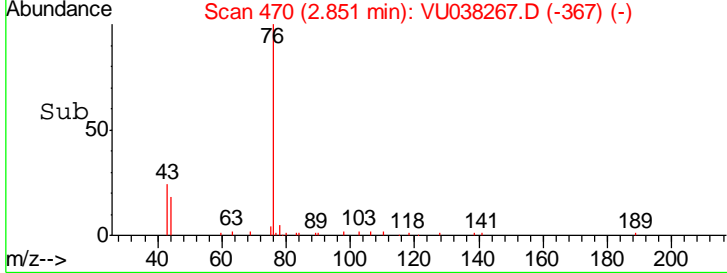
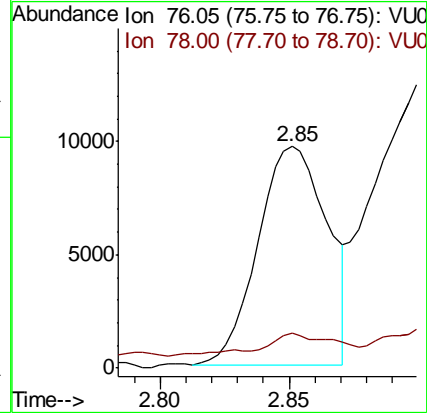
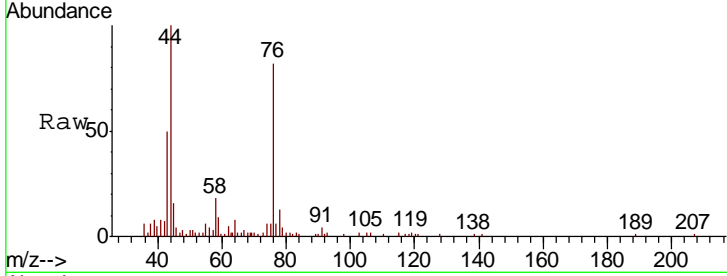




#14
 Carbon disulfide
 Concen: 0.156 ug/L
 RT: 2.85 min Scan# 470
 Delta R.T. 0.03 min
 Lab File: VU038267.D
 Acq: 21 May 2020 16:16

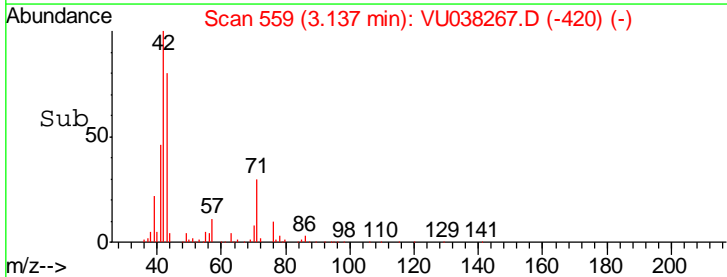
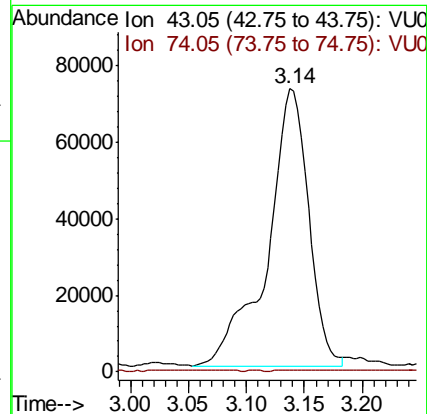
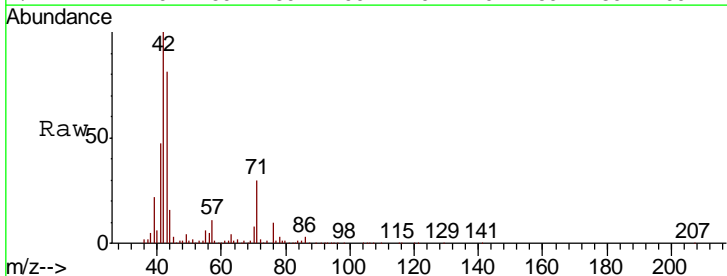
Instrument : MSVOA_U
 ClientSampled :

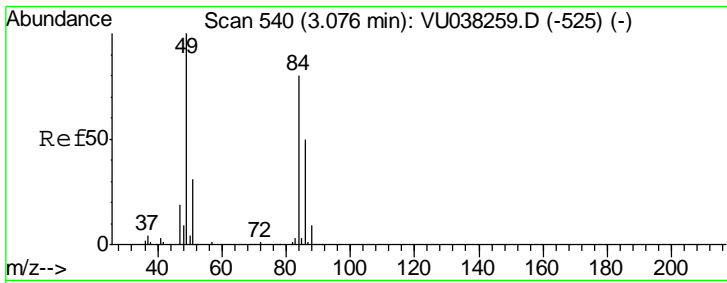
Tgt Ion	Resp	Lower	Upper
76	18042		
78	15.8	7.1	10.7#



#15
 Methyl Acetate
 Concen: 9.684 ug/L
 RT: 3.14 min Scan# 559
 Delta R.T. 0.15 min
 Lab File: VU038267.D
 Acq: 21 May 2020 16:16

Tgt Ion	Resp	Lower	Upper
43	178659		
74	0.2	18.0	27.0#

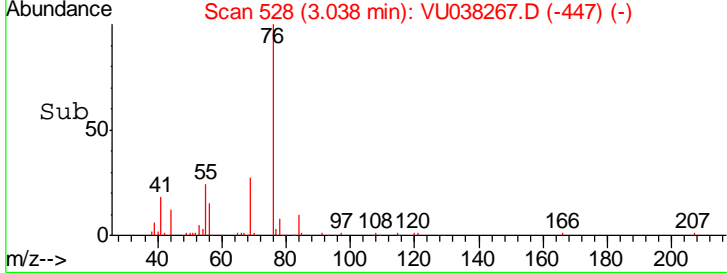
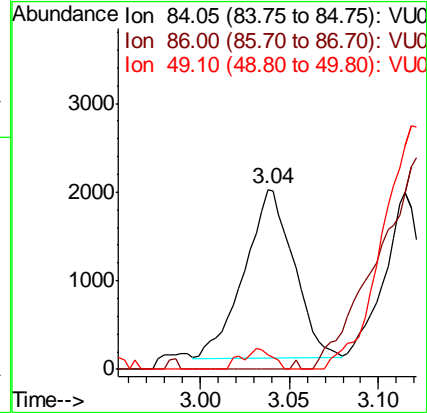
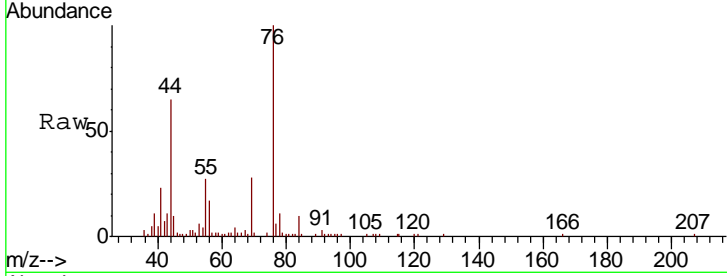




#16
 Methylene chloride
 Concen: 0.098 ug/L
 RT: 3.04 min Scan# 528
 Delta R.T. -0.04 min
 Lab File: VU038267.D
 Acq: 21 May 2020 16:16

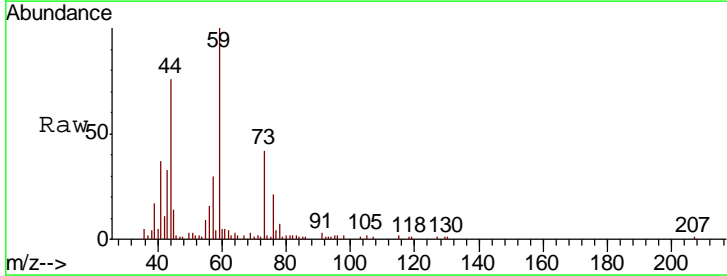
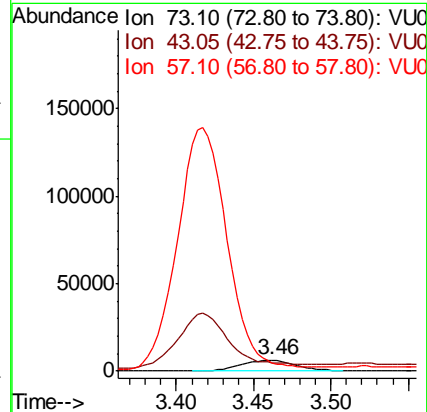
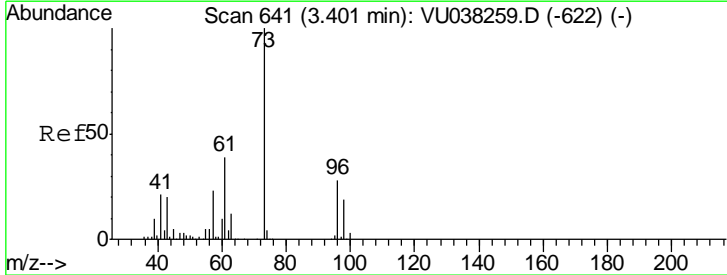
Instrument :
 MSVOA_U
 ClientSampled :

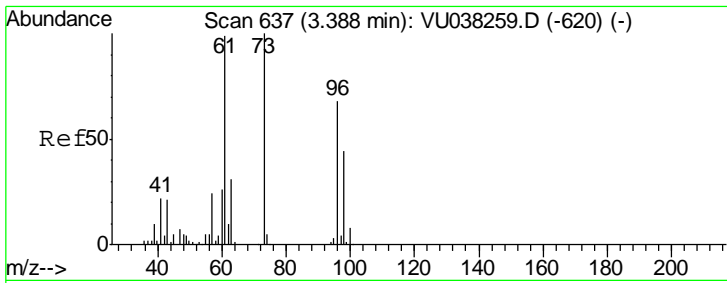
Tgt Ion	Resp	Lower	Upper
84	100		
86	0.0	44.9	83.3#
49	7.8	92.0	170.9#



#17
 Methyl tert-butyl Ether
 Concen: 0.165 ug/L
 RT: 3.46 min Scan# 660
 Delta R.T. 0.06 min
 Lab File: VU038267.D
 Acq: 21 May 2020 16:16

Tgt Ion	Resp	Lower	Upper
73	100		
43	518.9	16.9	25.3#
57	2126.5	18.2	27.2#

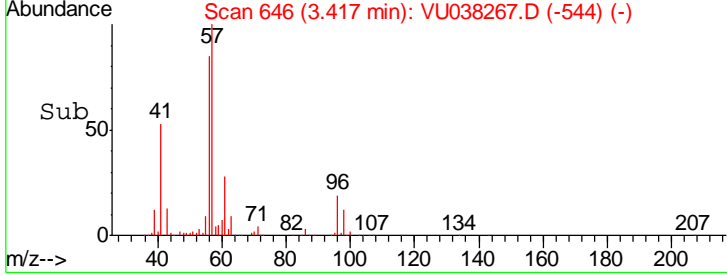
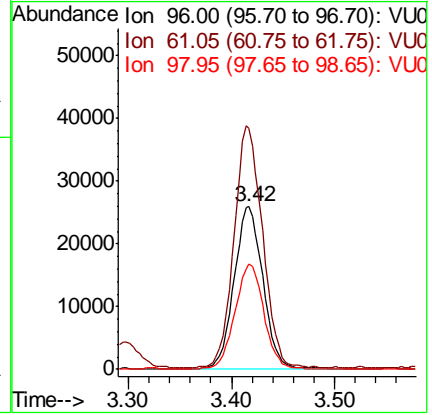
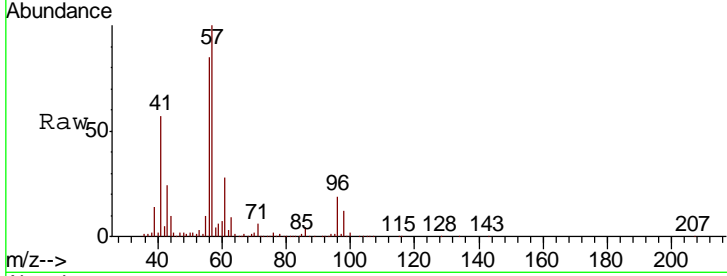




#18
 trans-1,2-Dichloroethene
 Concen: 1.439 ug/L
 RT: 3.42 min Scan# 646
 Delta R.T. 0.03 min
 Lab File: VU038267.D
 Acq: 21 May 2020 16:16

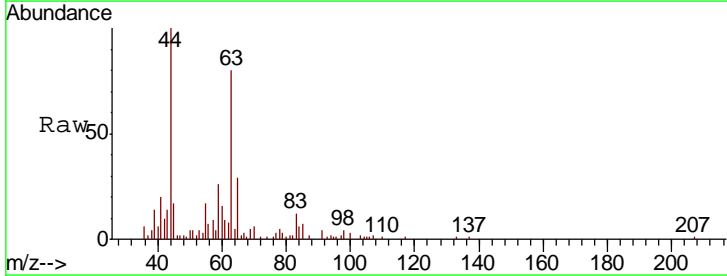
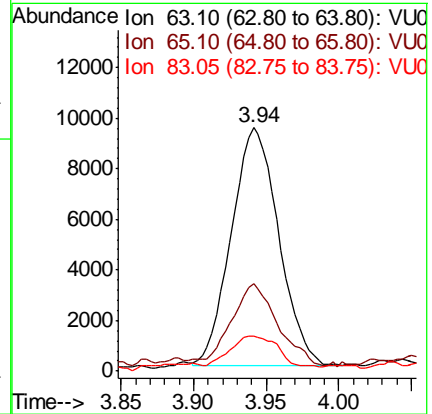
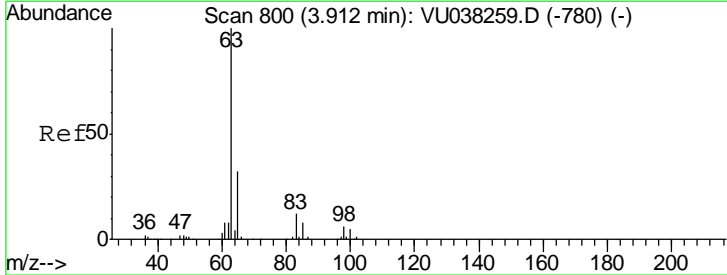
Instrument :
 MSVOA_U
ClientSampled :

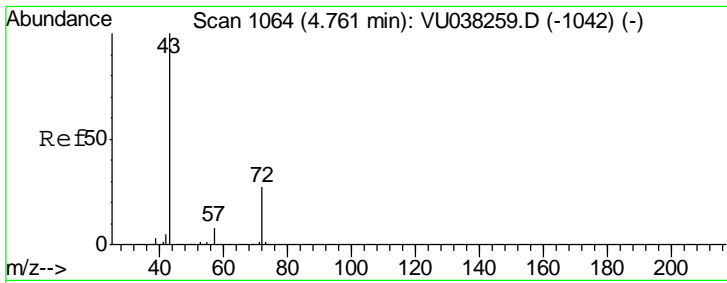
Tgt Ion	Resp	Lower	Upper
96	50785		
61	147.9	102.1	189.5
98	64.4	45.6	84.8



#19
 1,1-Dichloroethane
 Concen: 0.309 ug/L
 RT: 3.94 min Scan# 809
 Delta R.T. 0.03 min
 Lab File: VU038267.D
 Acq: 21 May 2020 16:16

Tgt Ion	Resp	Lower	Upper
63	21284		
65	35.9	22.5	41.7
83	14.3	8.9	16.5

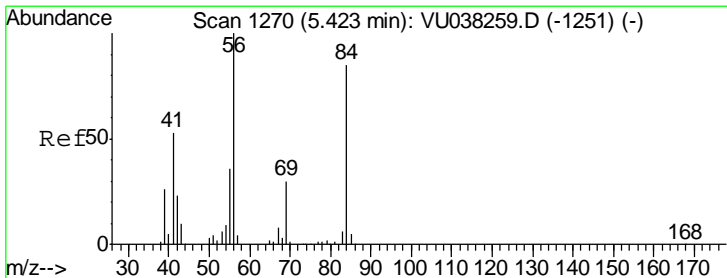
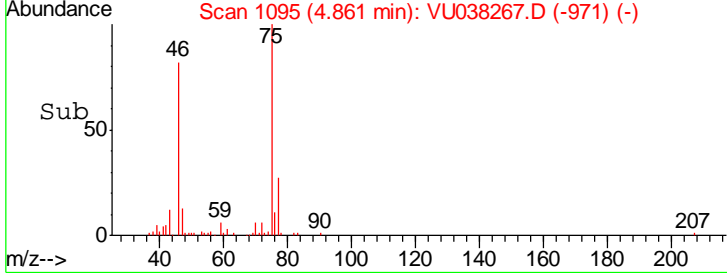
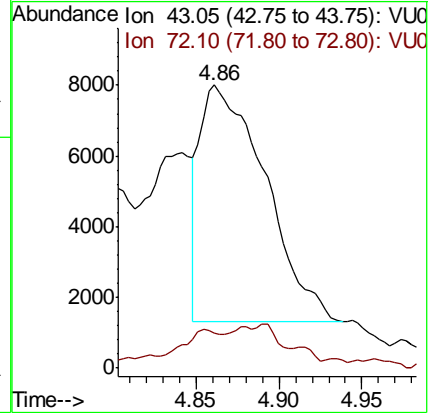
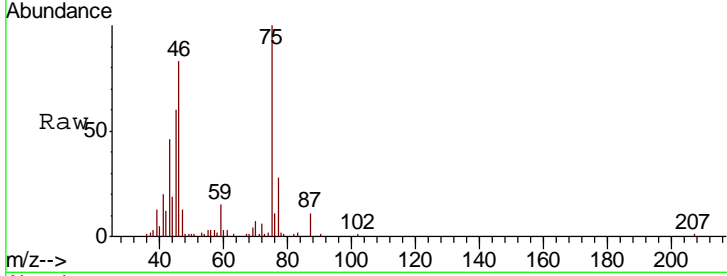




#21
 2-Butanone
 Concen: 1.576 ug/L
 RT: 4.86 min Scan# 1095
 Delta R.T. 0.10 min
 Lab File: VU038267.D
 Acq: 21 May 2020 16:16

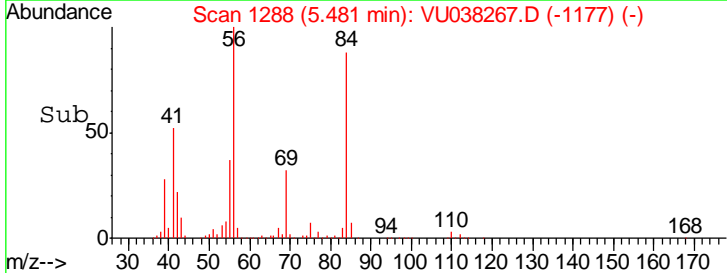
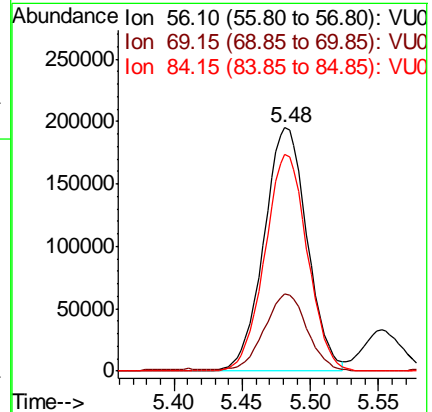
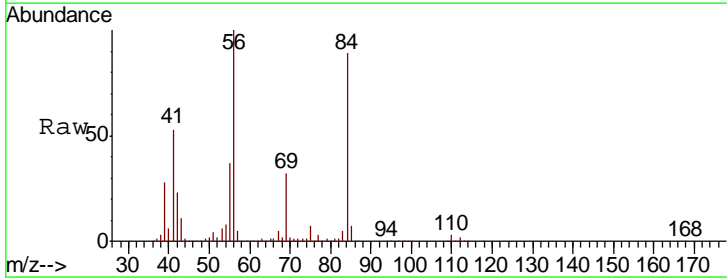
Instrument :
 MSVOA_U
 ClientSampled :

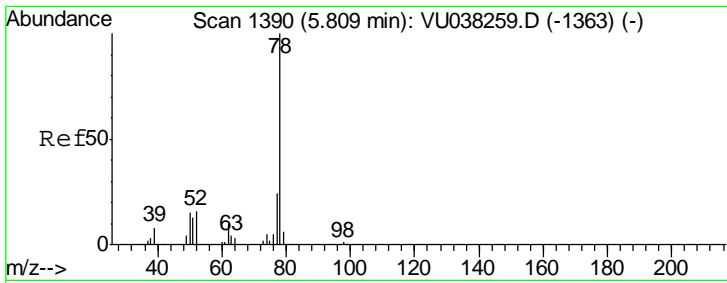
Tgt Ion	Resp	Lower	Upper
43	18349		
72	6.1	13.5	40.4#



#30
 Cyclohexane
 Concen: 6.906 ug/L
 RT: 5.48 min Scan# 1288
 Delta R.T. 0.06 min
 Lab File: VU038267.D
 Acq: 21 May 2020 16:16

Tgt Ion	Resp	Lower	Upper
56	427459		
69	30.7	24.2	36.4
84	88.1	68.5	102.7

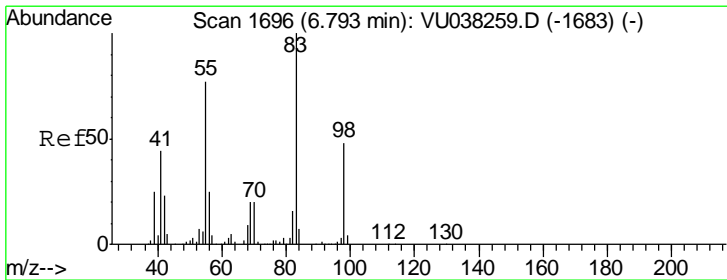
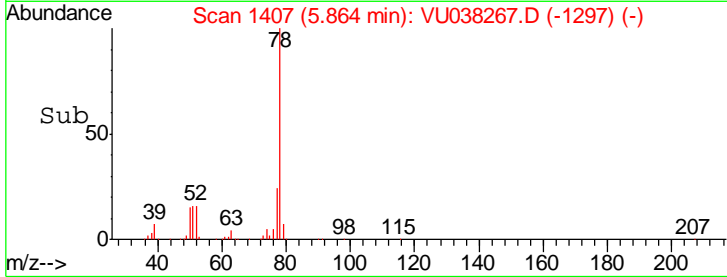
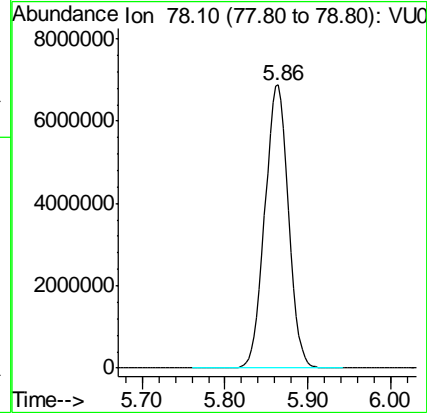
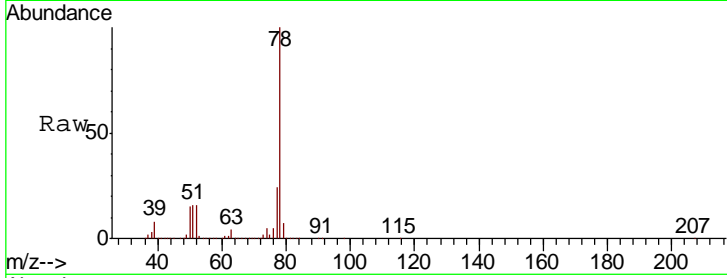




#33
Benzene
Concen: 93.397 ug/L
RT: 5.86 min Scan# 1407
Delta R.T. 0.05 min
Lab File: VU038267.D
Acq: 21 May 2020 16:16

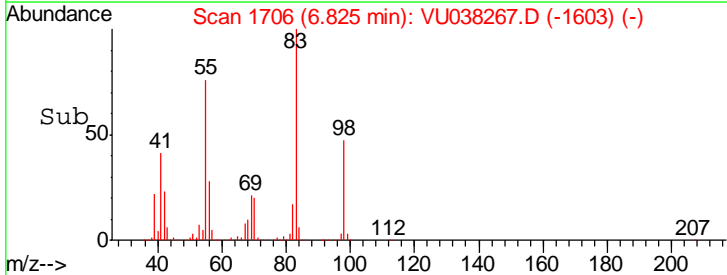
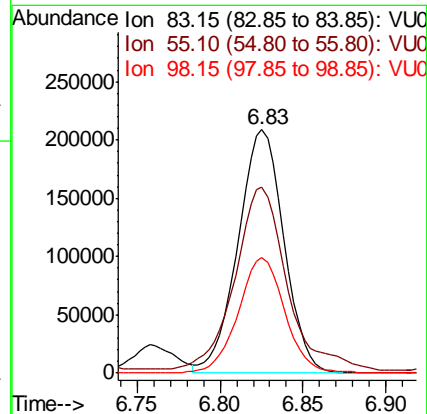
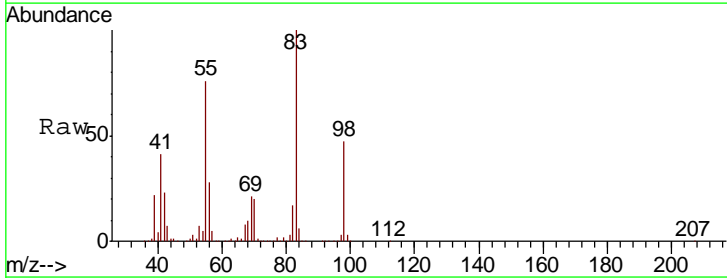
Instrument :
MSVOA_U
ClientSampled :

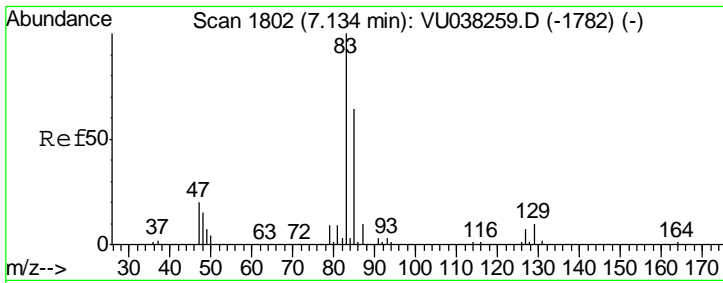
Tgt Ion: 78 Resp:13685298



#35
Methylcyclohexane
Concen: 6.724 ug/L
RT: 6.83 min Scan# 1706
Delta R.T. 0.03 min
Lab File: VU038267.D
Acq: 21 May 2020 16:16

Tgt Ion: 83 Resp: 399188
Ion Ratio Lower Upper
83 100
55 86.0 66.7 100.1
98 48.9 39.4 59.2

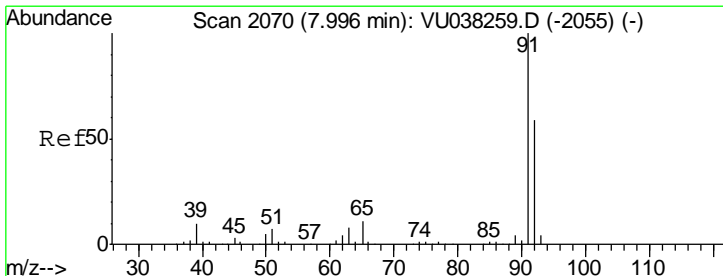
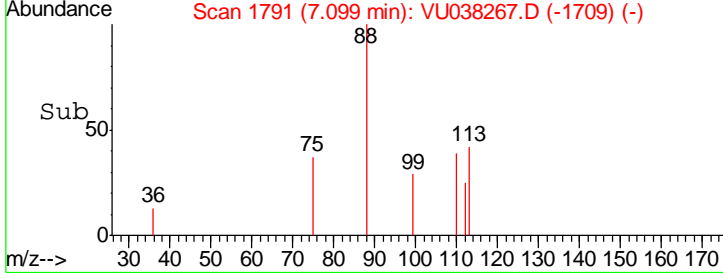
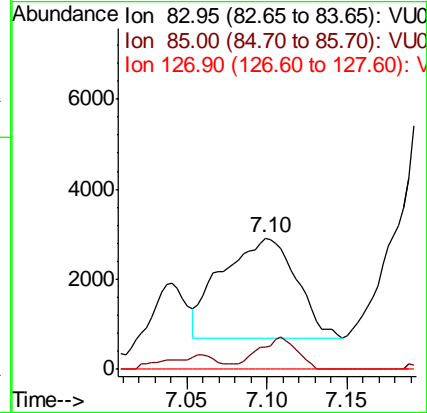
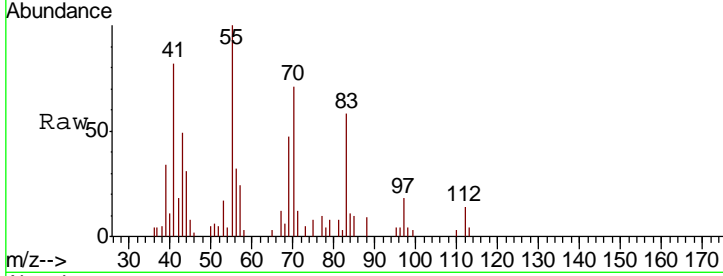




#38
 Bromodichloromethane
 Concen: 0.155 ug/L
 RT: 7.10 min Scan# 1791
 Delta R.T. -0.04 min
 Lab File: VU038267.D
 Acq: 21 May 2020 16:16

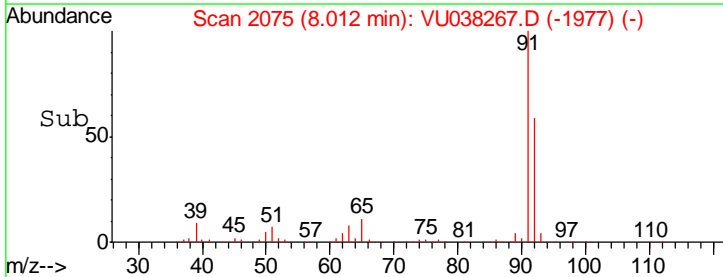
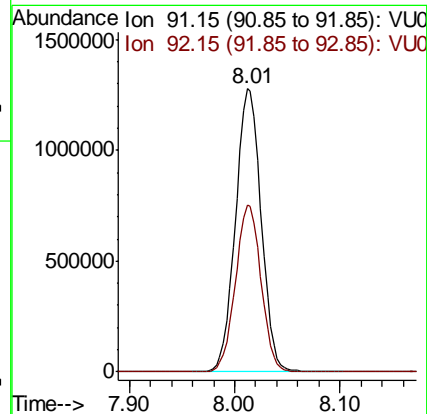
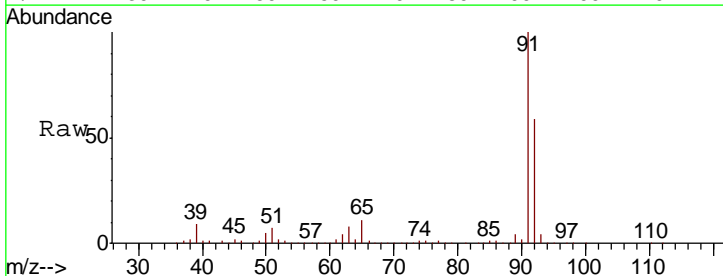
Instrument :
 MSVOA_U
 ClientSampled :

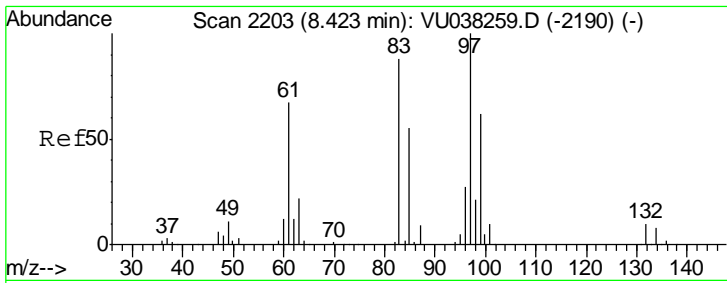
Tgt Ion	Resp	Lower	Upper
83	100		
85	16.6	44.6	82.8#
127	0.0	6.4	9.6#



#42
 Toluene
 Concen: 13.879 ug/L
 RT: 8.01 min Scan# 2075
 Delta R.T. 0.02 min
 Lab File: VU038267.D
 Acq: 21 May 2020 16:16

Tgt Ion	Resp	Lower	Upper
91	100		
92	58.9	40.9	75.9

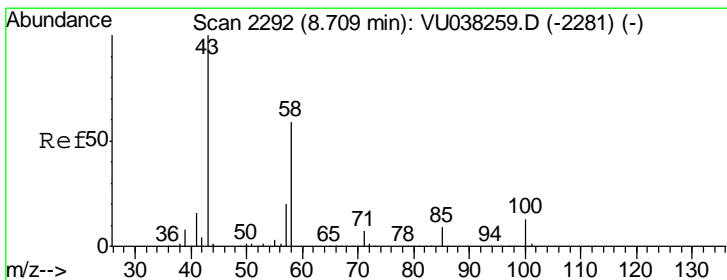
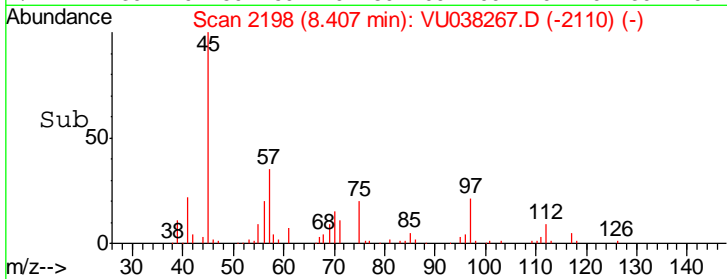
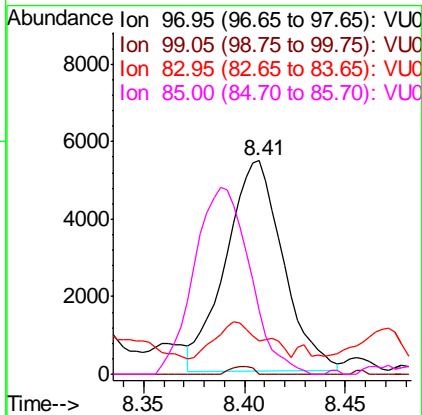
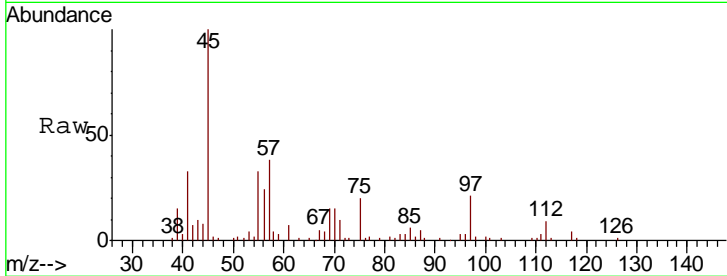




#45
 1,1,2-Trichloroethane
 Concen: 0.389 ug/L
 RT: 8.41 min Scan# 2198
 Delta R.T. -0.02 min
 Lab File: VU038267.D
 Acq: 21 May 2020 16:16

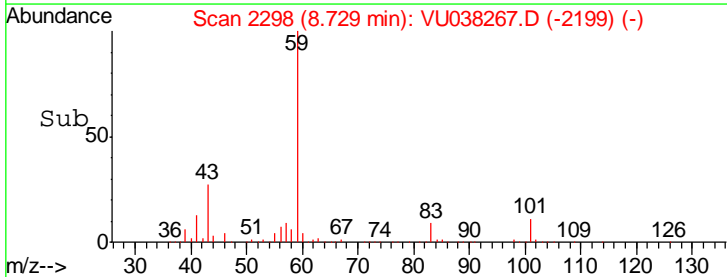
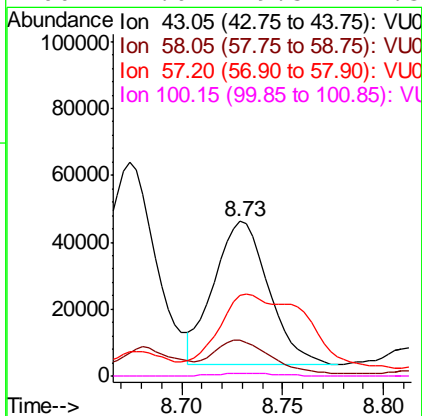
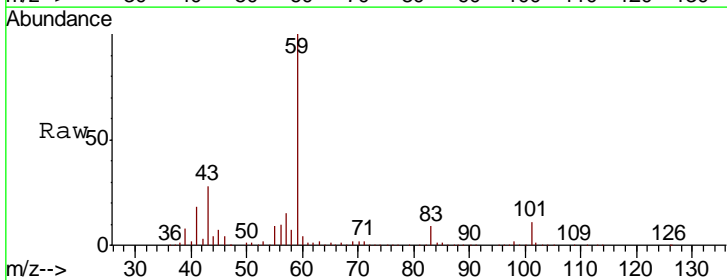
Instrument :
 MSVOA_U
 ClientSampled :

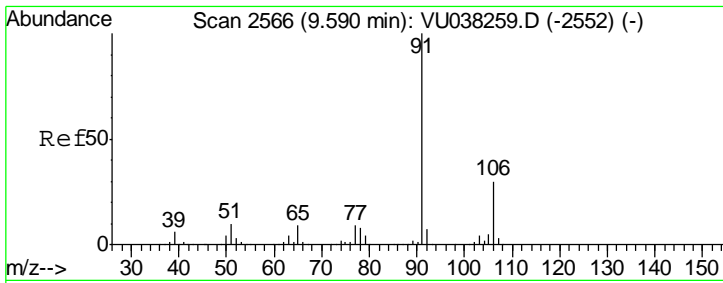
Tgt Ion	Resp	Lower	Upper
97	10741		
99	0.0	44.0	81.6#
83	15.8	59.6	110.8#
85	29.7	41.3	76.7#



#48
 2-Hexanone
 Concen: 4.041 ug/L
 RT: 8.73 min Scan# 2298
 Delta R.T. 0.02 min
 Lab File: VU038267.D
 Acq: 21 May 2020 16:16

Tgt Ion	Resp	Lower	Upper
43	81637		
58	27.3	45.2	67.8#
57	89.3	15.5	23.3#
100	2.0	9.5	14.3#



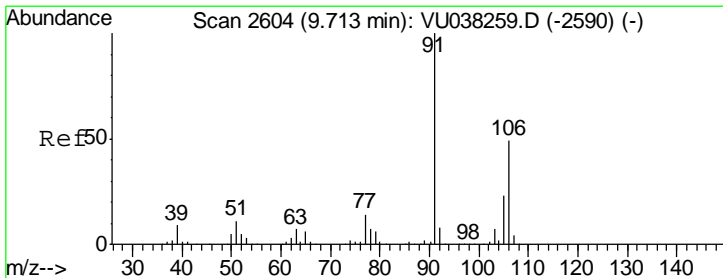
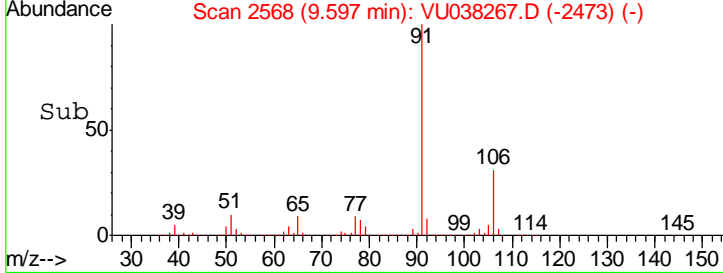
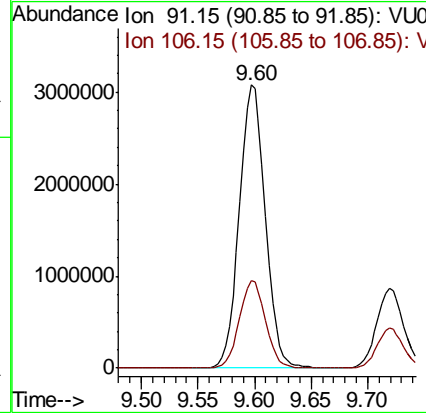
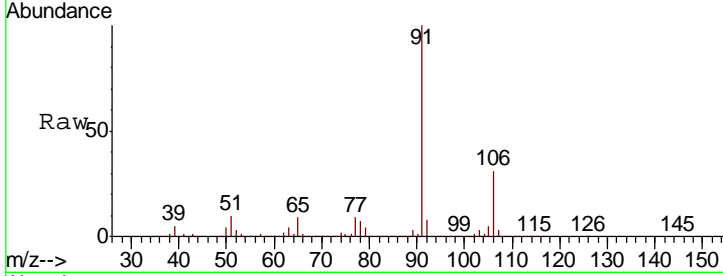


#52
 Ethylbenzene
 Concen: 29.430 ug/L
 RT: 9.60 min Scan# 2568
 Delta R.T. 0.01 min
 Lab File: VU038267.D
 Acq: 21 May 2020 16:16

Instrument :
 MSVOA_U
 ClientSampled :

Tgt Ion: 91 Resp: 4931081

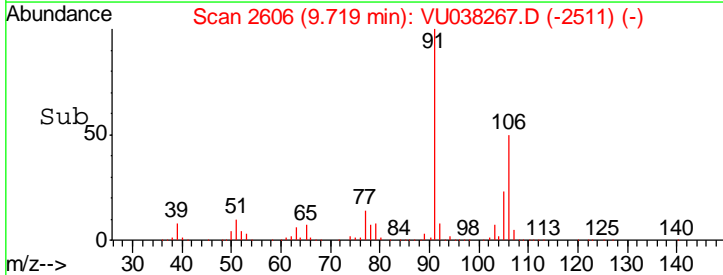
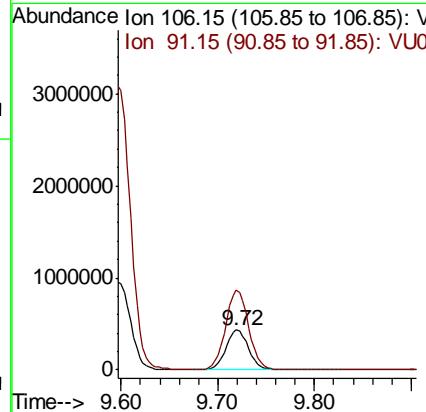
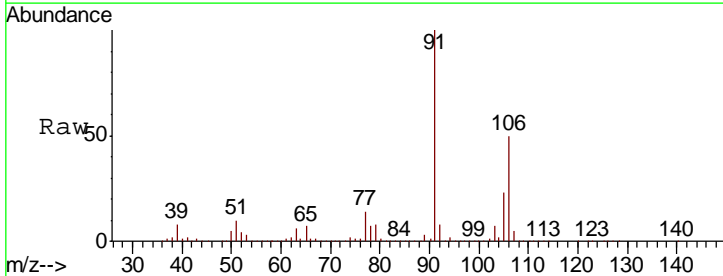
Ion	Ratio	Lower	Upper
91	100		
106	30.8	21.8	40.4

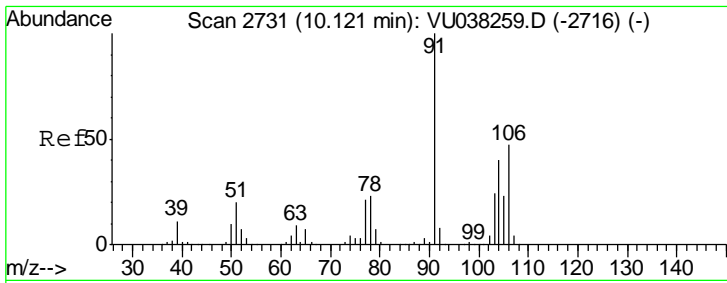


#53
 m,p-Xylene
 Concen: 11.090 ug/L
 RT: 9.72 min Scan# 2606
 Delta R.T. 0.01 min
 Lab File: VU038267.D
 Acq: 21 May 2020 16:16

Tgt Ion: 106 Resp: 712483

Ion	Ratio	Lower	Upper
106	100		
91	202.0	142.1	263.9

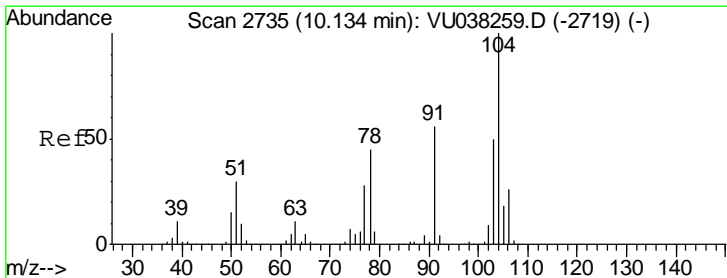
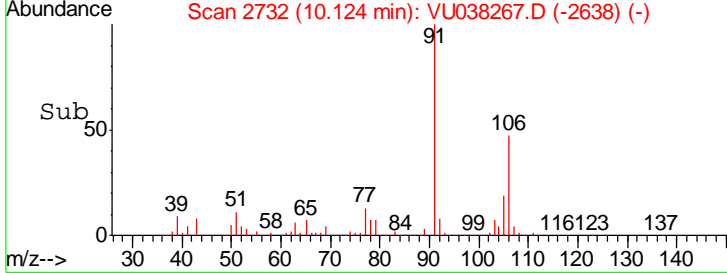
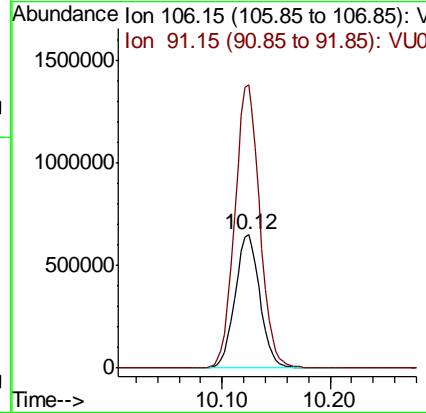
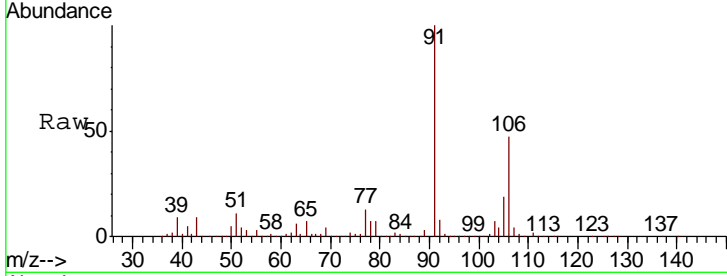




#54
 o-Xylene
 Concen: 16.852 ug/L
 RT: 10.12 min Scan# 2732
 Delta R.T. 0.00 min
 Lab File: VU038267.D
 Acq: 21 May 2020 16:16

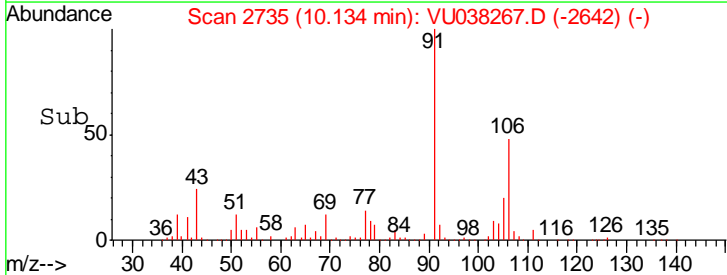
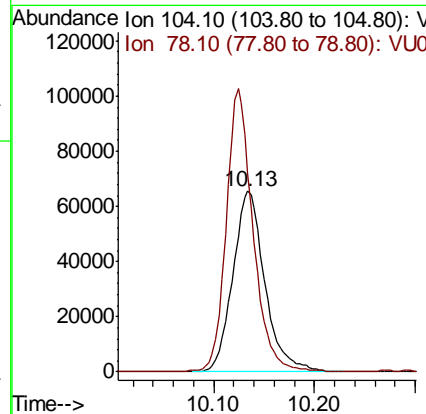
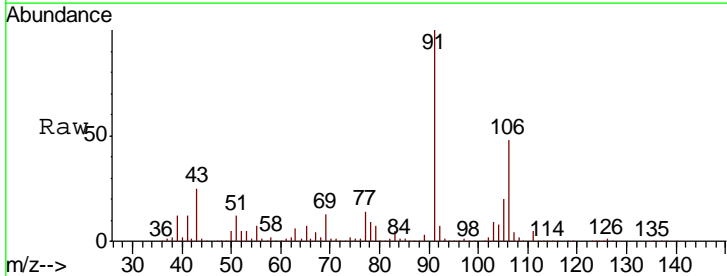
Instrument : MSVOA_U
 Client Sampled :

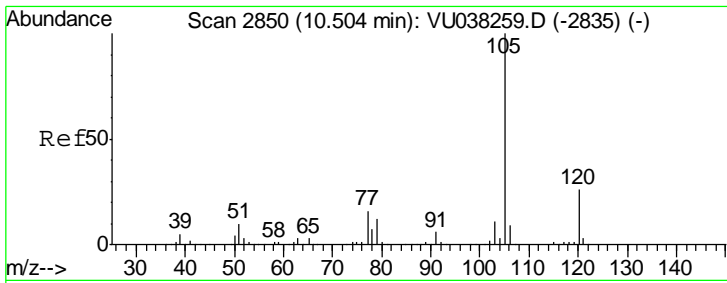
Tgt Ion: 106 Resp: 1046805
 Ion Ratio Lower Upper
 106 100
 91 212.3 148.5 275.9



#55
 Styrene
 Concen: 1.385 ug/L
 RT: 10.13 min Scan# 2735
 Delta R.T. 0.00 min
 Lab File: VU038267.D
 Acq: 21 May 2020 16:16

Tgt Ion: 104 Resp: 144398
 Ion Ratio Lower Upper
 104 100
 78 110.2 32.3 59.9#

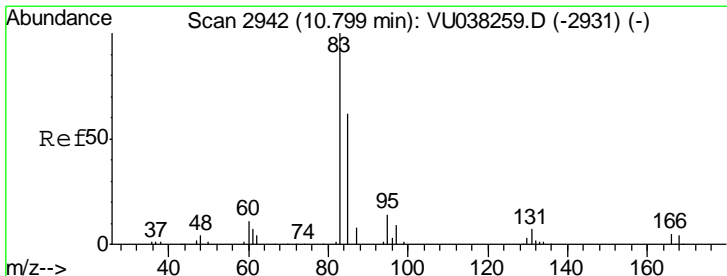
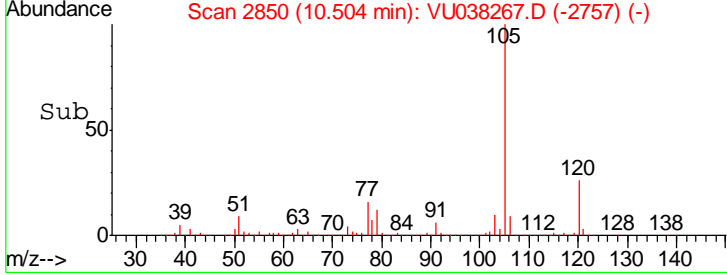
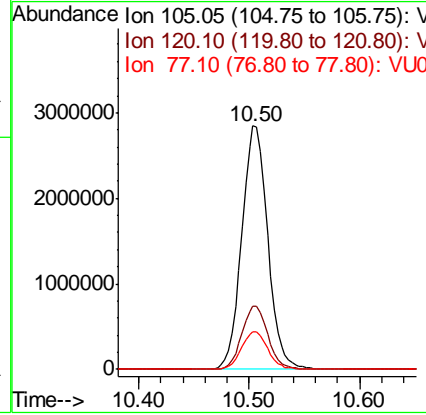
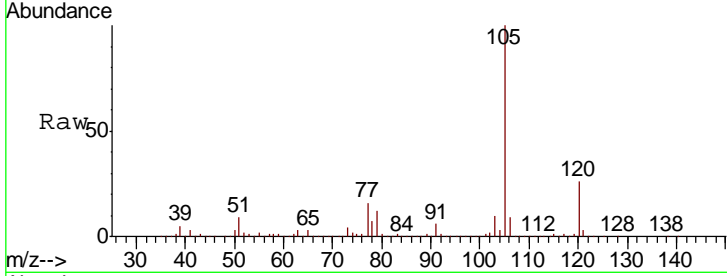




#56
 Isopropylbenzene
 Concen: 29.103 ug/L
 RT: 10.50 min Scan# 2850
 Delta R.T. 0.00 min
 Lab File: VU038267.D
 Acq: 21 May 2020 16:16

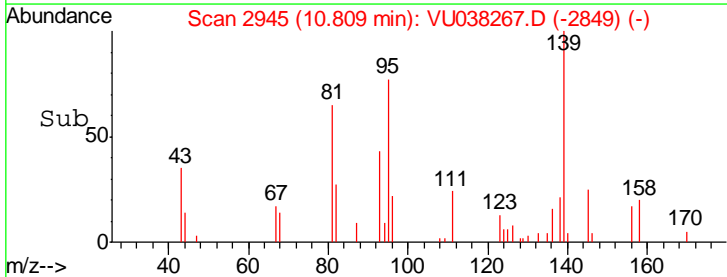
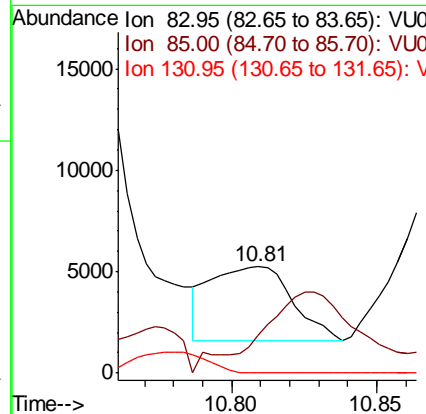
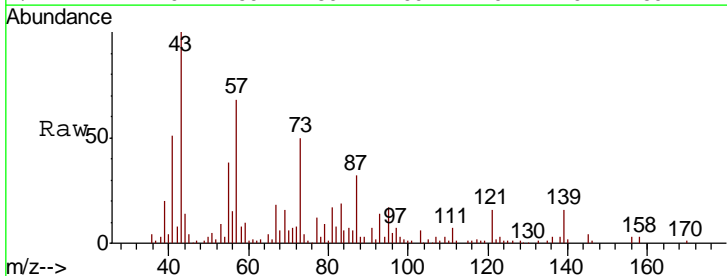
Instrument : MSVOA_U
 ClientSampled :

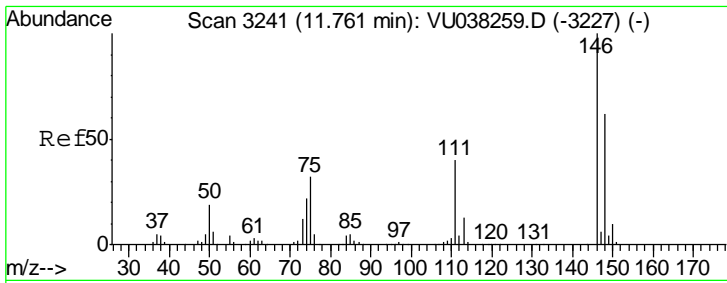
Tgt Ion	Resp	Lower	Upper
105	4643760		
120	26.0	21.0	31.6
77	15.7	13.0	19.4



#58
 1,1,2,2-Tetrachloroethane
 Concen: 0.206 ug/L
 RT: 10.81 min Scan# 2945
 Delta R.T. 0.01 min
 Lab File: VU038267.D
 Acq: 21 May 2020 16:16

Tgt Ion	Resp	Lower	Upper
83	7240		
85	35.8	47.0	87.2#
131	0.0	7.7	11.5#

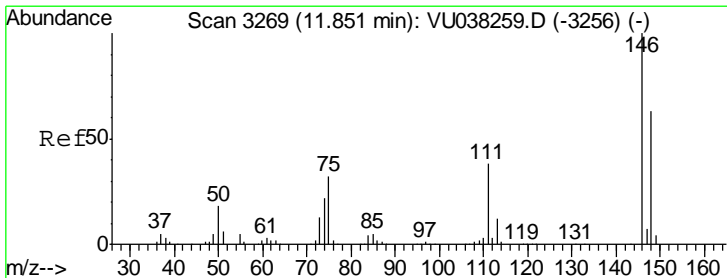
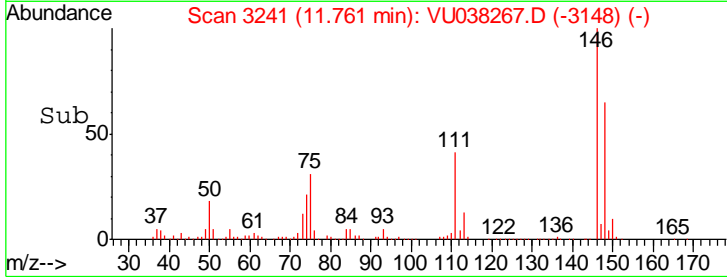
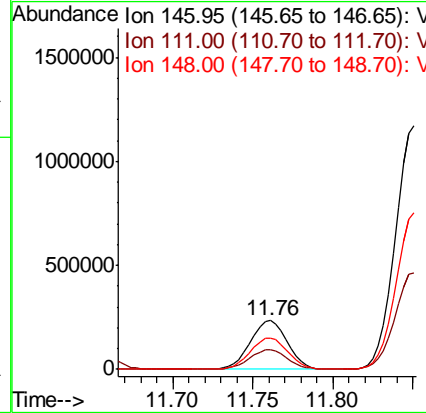
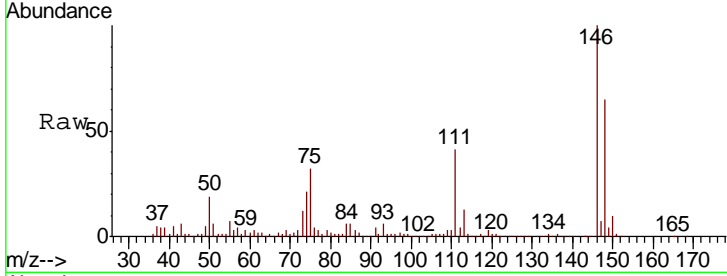




#62
 1,3-Dichlorobenzene
 Concen: 5.025 ug/L
 RT: 11.76 min Scan# 3241
 Delta R.T. 0.00 min
 Lab File: VU038267.D
 Acq: 21 May 2020 16:16

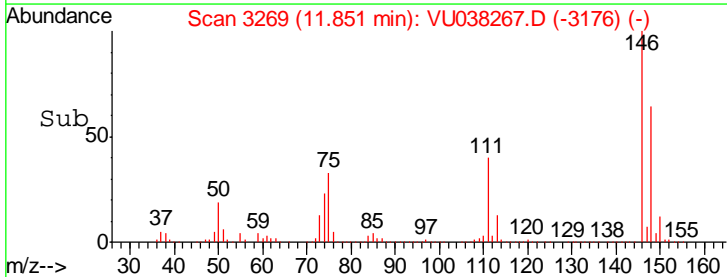
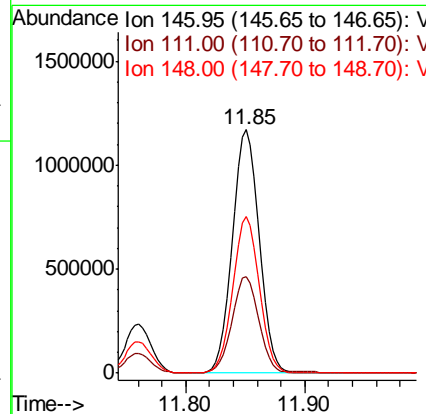
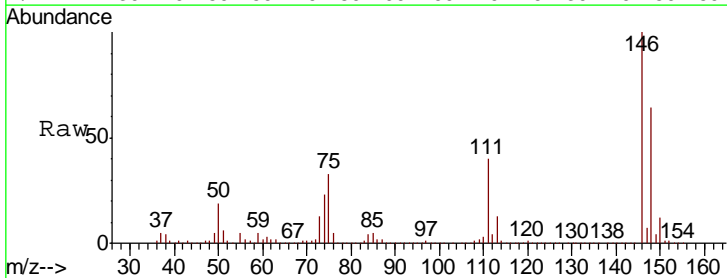
Instrument : MSVOA_U
 ClientSampled :

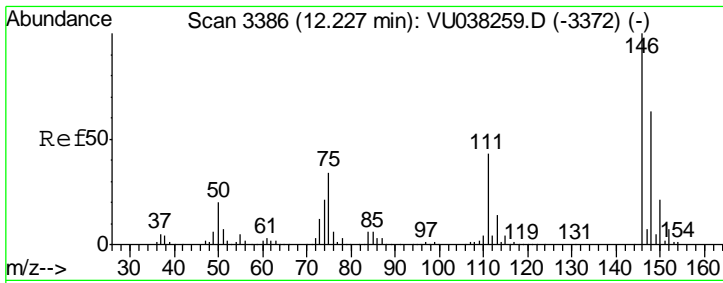
Tgt Ion	Resp	Lower	Upper
146	100		
111	41.4	28.6	53.2
148	64.9	45.2	84.0



#63
 1,4-Dichlorobenzene
 Concen: 24.584 ug/L
 RT: 11.85 min Scan# 3269
 Delta R.T. 0.00 min
 Lab File: VU038267.D
 Acq: 21 May 2020 16:16

Tgt Ion	Resp	Lower	Upper
146	100		
111	39.9	27.2	50.6
148	64.2	43.8	81.3

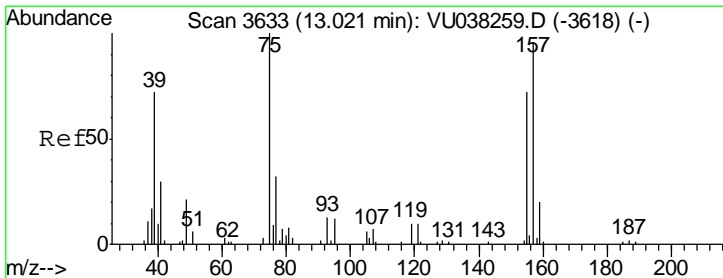
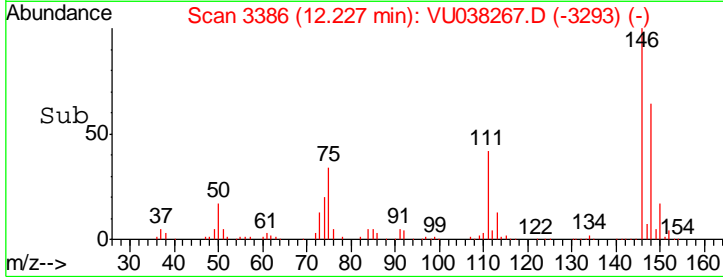
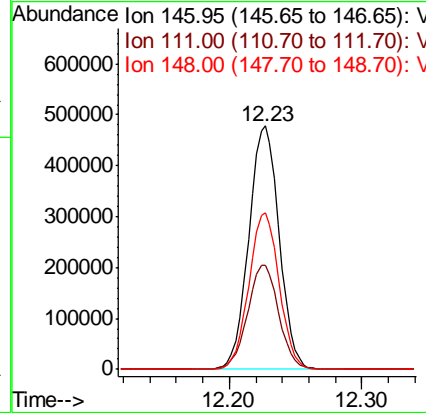
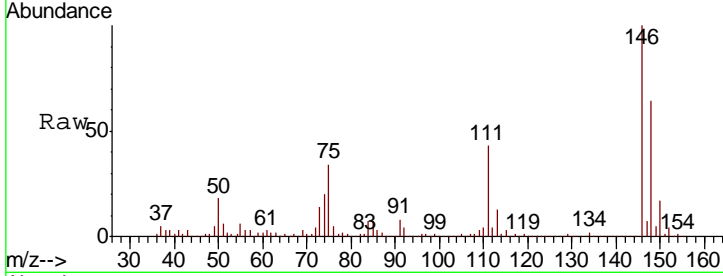




#65
 1,2-Dichlorobenzene
 Concen: 10.748 ug/L
 RT: 12.23 min Scan# 3386
 Delta R.T. 0.00 min
 Lab File: VU038267.D
 Acq: 21 May 2020 16:16

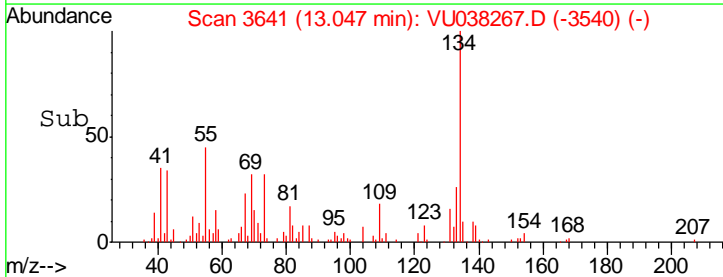
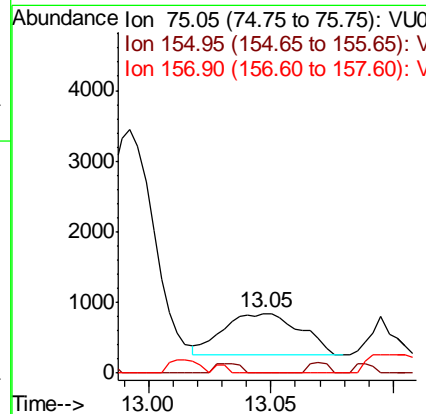
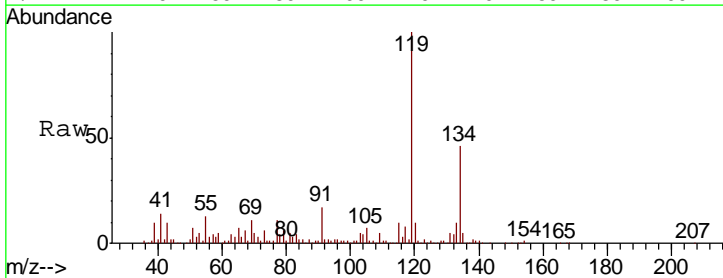
Instrument : MSVOA_U
 ClientSampled :

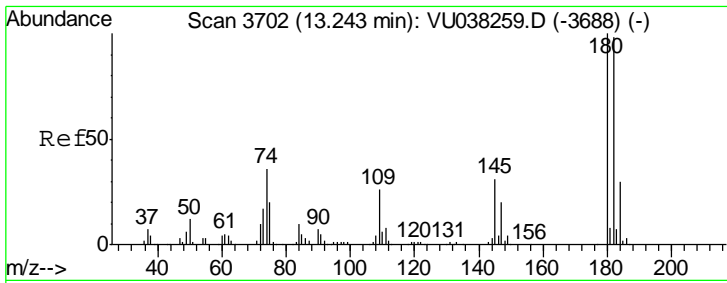
Tgt Ion	Resp	Lower	Upper
146	100		
111	42.6	35.3	52.9
148	64.1	51.0	76.4



#66
 1,2-Dibromo-3-chloropropane
 Concen: 0.225 ug/L
 RT: 13.05 min Scan# 3641
 Delta R.T. 0.03 min
 Lab File: VU038267.D
 Acq: 21 May 2020 16:16

Tgt Ion	Resp	Lower	Upper
75	100		
155	0.0	58.2	87.2#
157	0.0	72.9	109.3#

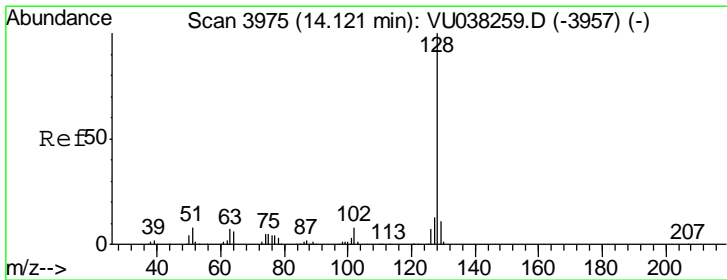
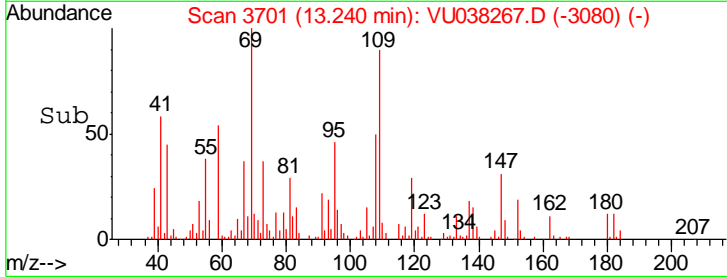
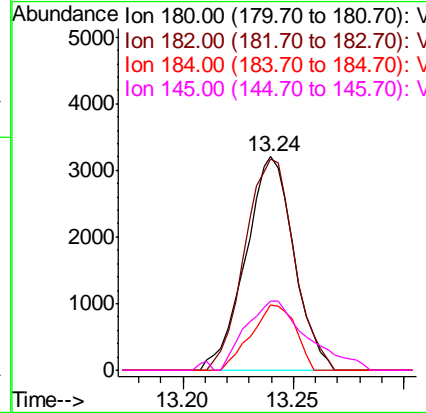
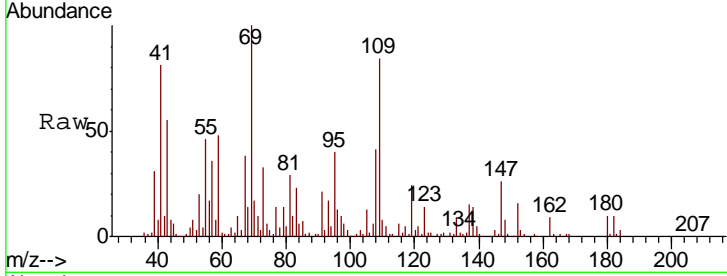




#67
 1,3,5-Trichlorobenzene
 Concen: 0.092 ug/L
 RT: 13.24 min Scan# 3701
 Delta R.T. -0.00 min
 Lab File: VU038267.D
 Acq: 21 May 2020 16:16

Instrument :
 MSVOA_U
 ClientSampled :

Tgt Ion	Resp	Lower	Upper
180	4885		
182	101.0	77.4	116.2
184	28.1	24.2	36.2
145	41.5	24.0	36.0



#69
 Naphthalene
 Concen: 6.931 ug/L
 RT: 14.11 min Scan# 3973
 Delta R.T. -0.01 min
 Lab File: VU038267.D
 Acq: 21 May 2020 16:16

Tgt Ion	Resp	Lower	Upper
128	703497		
129	11.4	8.7	13.1
127	12.7	10.2	15.4

