

Data Path : Z:\voasrv\HPCHEM1\MSVOA\_U\Data\VU052121\  
 Data File : VU043895.D  
 Acq On : 21 May 2021 17:34  
 Operator : SY/MD  
 Sample : M2459-08DL 250X  
 Misc : 25.0mL/MSVOA\_U/WATER  
 ALS Vial : 15 Sample Multiplier: 1

Instrument :  
 MSVOA\_U  
 ClientSampled :  
 COGJ9DL

Quant Time: May 22 00:55:09 2021  
 Quant Method : Z:\voasrv\HPCHEM1\MSVOA\_U\Method\SFAMUTR051521WMA.M  
 Quant Title : TRACE VOA SFAM1.0  
 QLast Update : Sat May 22 00:45:10 2021  
 Response via : Initial Calibration

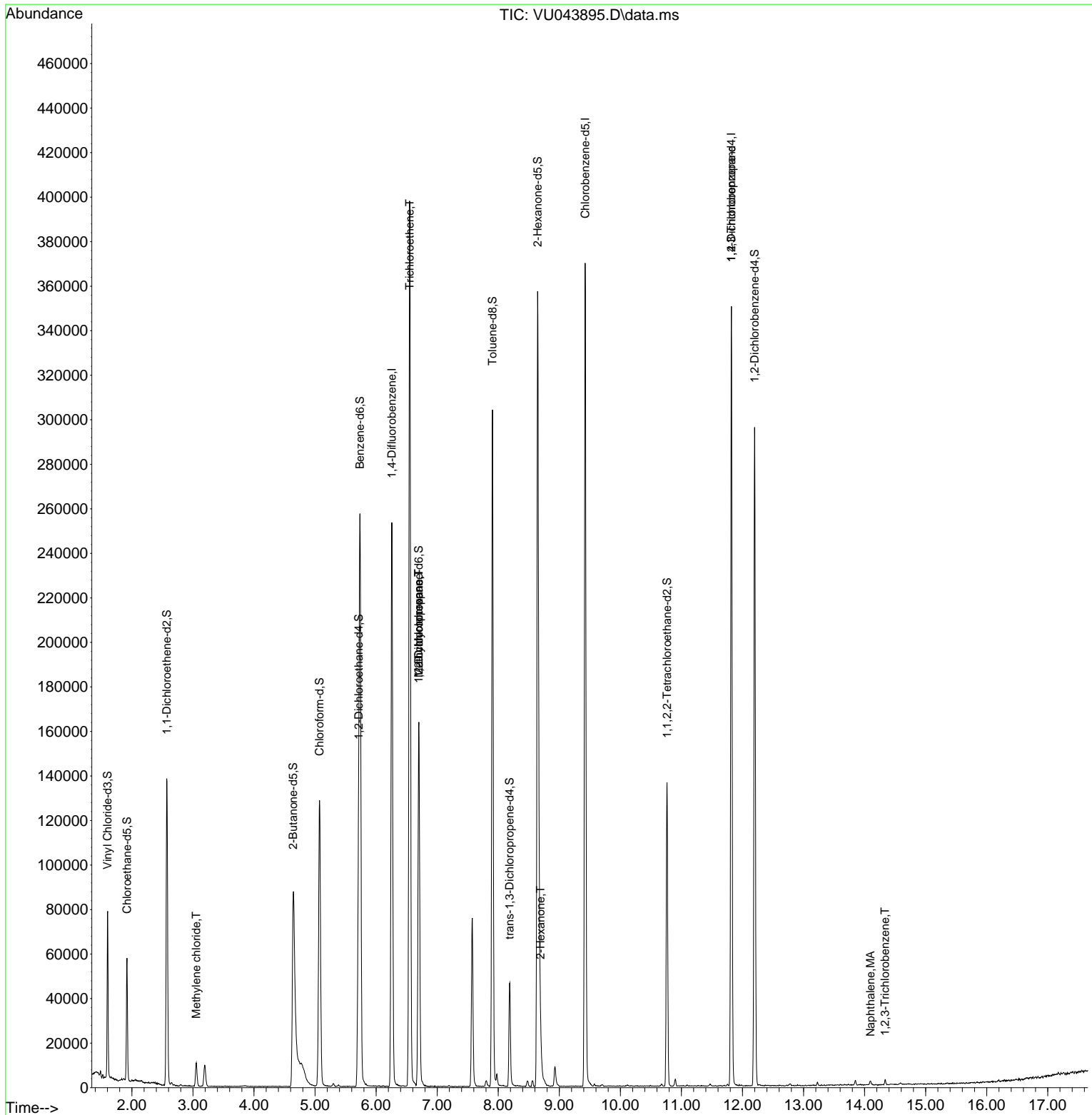
Compound	R.T.	QIon	Response	Conc	Units	Dev(Min)
Internal Standards						
1) 1,4-Difluorobenzene	6.256	114	216919	5.00	ug/L	0.00
28) Chlorobenzene-d5	9.423	117	218602	5.00	ug/L	0.00
58) 1,4-Dichlorobenzene-d4	11.819	152	98202	5.00	ug/L	0.00
System Monitoring Compounds						
4) Vinyl Chloride-d3	1.601	65	52050	3.26	ug/L	0.00
Spiked Amount	5.000	Range 40 - 130	Recovery =	65.20%		
7) Chloroethane-d5	1.919	69	39709	3.55	ug/L	0.00
Spiked Amount	5.000	Range 65 - 130	Recovery =	71.00%		
11) 1,1-Dichloroethene-d2	2.572	65	26144	3.94	ug/L	0.00
Spiked Amount	5.000	Range 60 - 125	Recovery =	78.80%		
20) 2-Butanone-d5	4.642	46	157052	51.64	ug/L	0.00
Spiked Amount	50.000	Range 40 - 130	Recovery =	103.28%		
24) Chloroform-d	5.073	84	123122	4.73	ug/L	0.00
Spiked Amount	5.000	Range 70 - 125	Recovery =	94.60%		
26) 1,2-Dichloroethane-d4	5.713	65	64638	4.85	ug/L	0.00
Spiked Amount	5.000	Range 70 - 130	Recovery =	97.00%		
32) Benzene-d6	5.735	84	247707	4.46	ug/L	0.00
Spiked Amount	5.000	Range 70 - 125	Recovery =	89.20%		
36) 1,2-Dichloropropane-d6	6.700	67	82671	4.67	ug/L	0.00
Spiked Amount	5.000	Range 60 - 140	Recovery =	93.40%		
41) Toluene-d8	7.906	98	206109	4.02	ug/L	0.00
Spiked Amount	5.000	Range 70 - 130	Recovery =	80.40%		
43) trans-1,3-Dichloroprop...	8.185	79	28171	4.29	ug/L	0.00
Spiked Amount	5.000	Range 55 - 130	Recovery =	85.80%		
46) 2-Hexanone-d5	8.645	63	143532	48.52	ug/L	0.00
Spiked Amount	50.000	Range 45 - 130	Recovery =	97.04%		
56) 1,1,2,2-Tetrachloroeth...	10.764	84	69923	4.82	ug/L	0.00
Spiked Amount	5.000	Range 65 - 120	Recovery =	96.40%		
66) 1,2-Dichlorobenzene-d4	12.198	152	83767	5.12	ug/L	0.00
Spiked Amount	5.000	Range 80 - 120	Recovery =	102.40%		
Target Compounds						
16) Methylene chloride	3.054	84	5094	0.24	ug/L	92
34) Trichloroethene	6.549	95	136542	8.42	ug/L	95
35) Methylcyclohexane	6.700	83	19097	0.76	ug/L #	17
37) 1,2-Dichloropropane	6.697	63	8142	0.49	ug/L #	88
48) 2-Hexanone	8.690	43	6671	0.85	ug/L	93
61) 1,2,3-Trichloropropane	11.819	75	10859	1.16	ug/L #	69
71) Naphthalene	14.095	128	2316	0.07	ug/L	97
72) 1,2,3-Trichlorobenzene	14.333	180	999	0.06	ug/L #	85

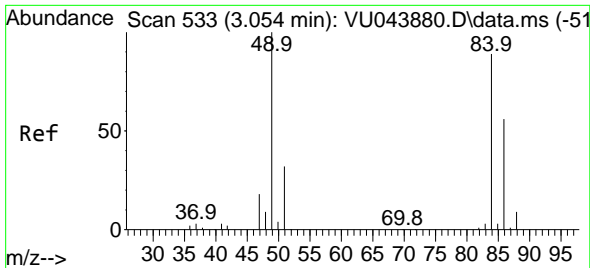
(#) = qualifier out of range (m) = manual integration (+) = signals summed

Data Path : Z:\voasrv\HPCHEM1\MSVOA\_U\Data\VU052121\  
 Data File : VU043895.D  
 Acq On : 21 May 2021 17:34  
 Operator : SY/MD  
 Sample : M2459-08DL 250X  
 Misc : 25.0mL/MSVOA\_U/WATER  
 ALS Vial : 15 Sample Multiplier: 1

Instrument :  
 MSVOA\_U  
 Client Sampled :  
 COGJ9DL

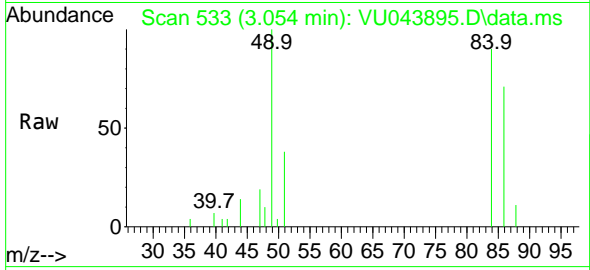
Quant Time: May 22 00:55:09 2021  
 Quant Method : Z:\voasrv\HPCHEM1\MSVOA\_U\Method\SFAMUTR051521WMA.M  
 Quant Title : TRACE VOA SFAM1.0  
 QLast Update : Sat May 22 00:45:10 2021  
 Response via : Initial Calibration





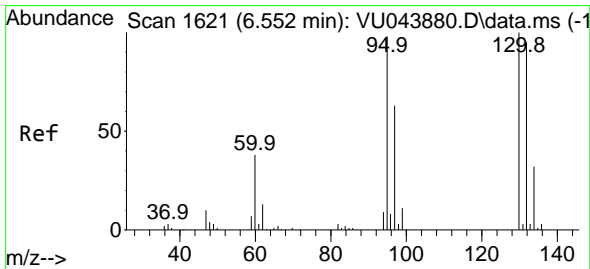
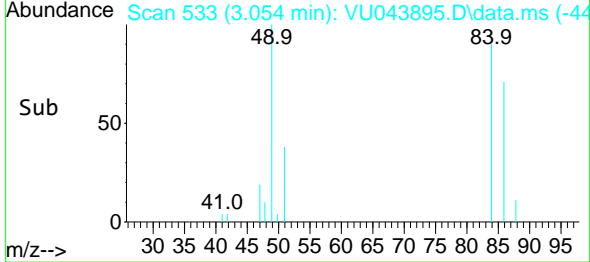
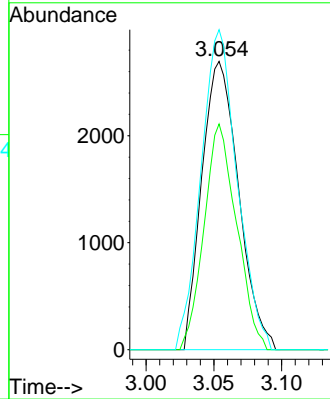
#16  
 Methylene chloride  
 Concen: 0.24 ug/L  
 RT: 3.054 min Scan# 533  
 Delta R.T. 0.000 min  
 Lab File: VU043895.D  
 Acq: 21 May 2021 17:34

Instrument :  
 MSVOA\_U  
 ClientSampled :  
 COGJ9DL

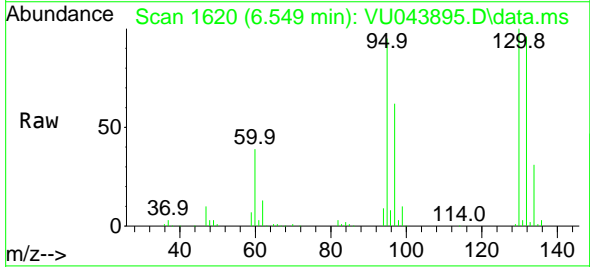


Tgt Ion: 84 Resp: 5094

Ion	Ratio	Lower	Upper
84	100		
86	78.3	44.7	82.9
49	115.3	83.1	154.3

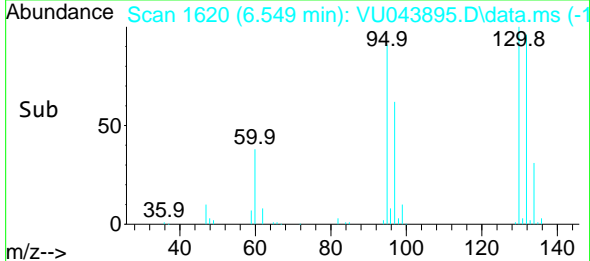
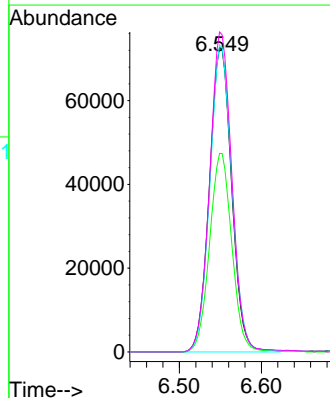


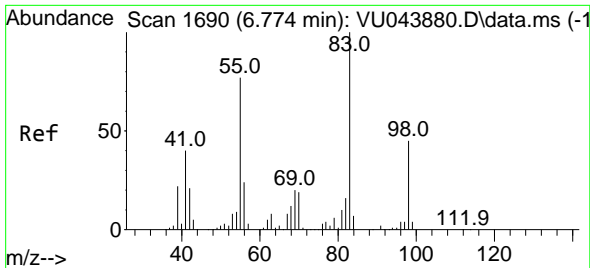
#34  
 Trichloroethene  
 Concen: 8.42 ug/L  
 RT: 6.549 min Scan# 1620  
 Delta R.T. -0.003 min  
 Lab File: VU043895.D  
 Acq: 21 May 2021 17:34



Tgt Ion: 95 Resp: 136542

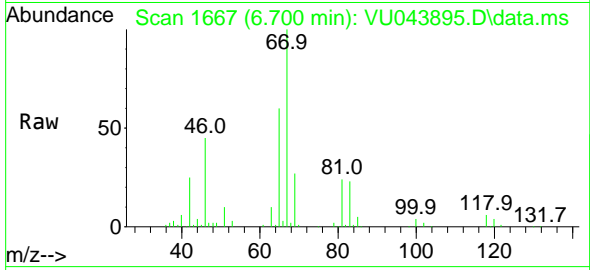
Ion	Ratio	Lower	Upper
95	100		
97	65.2	44.3	82.3
132	100.8	66.0	122.6
130	105.1	69.2	128.6



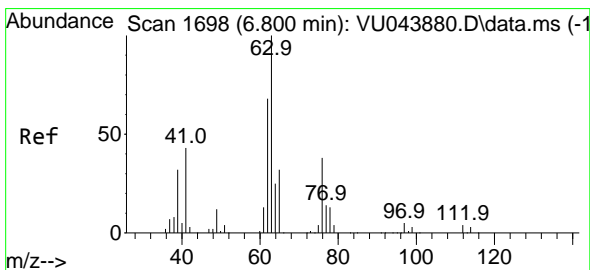
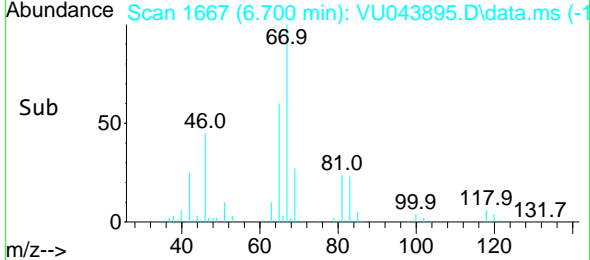
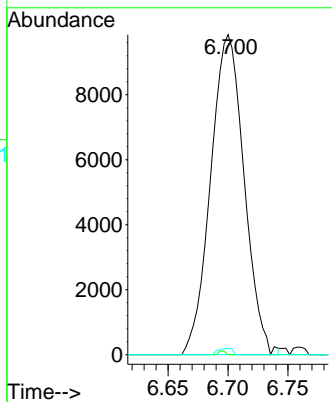


#35  
 Methylcyclohexane  
 Concen: 0.76 ug/L  
 RT: 6.700 min Scan# 1667  
 Delta R.T. -0.074 min  
 Lab File: VU043895.D  
 Acq: 21 May 2021 17:34

Instrument :  
 MSVOA\_U  
 ClientSampled :  
 COGJ9DL

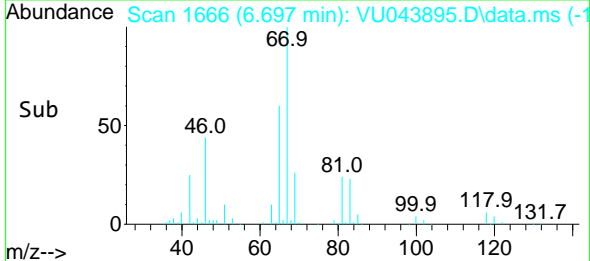
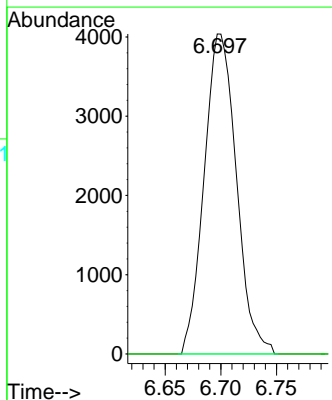
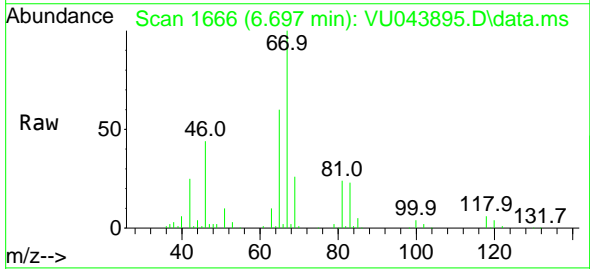


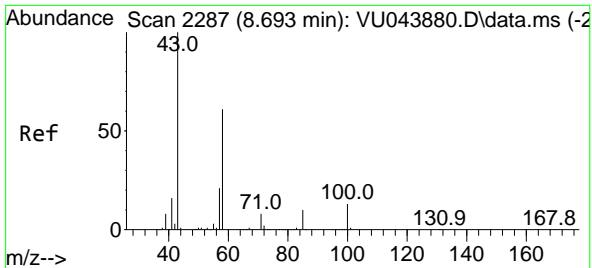
Tgt Ion: 83 Resp: 19097  
 Ion Ratio Lower Upper  
 83 100  
 55 0.2 64.8 97.2#  
 98 0.8 35.9 53.9#



#37  
 1,2-Dichloropropane  
 Concen: 0.49 ug/L  
 RT: 6.697 min Scan# 1666  
 Delta R.T. -0.103 min  
 Lab File: VU043895.D  
 Acq: 21 May 2021 17:34

Tgt Ion: 63 Resp: 8142  
 Ion Ratio Lower Upper  
 63 100  
 112 0.0 3.3 4.9#

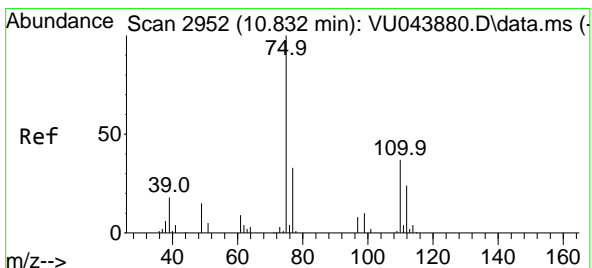
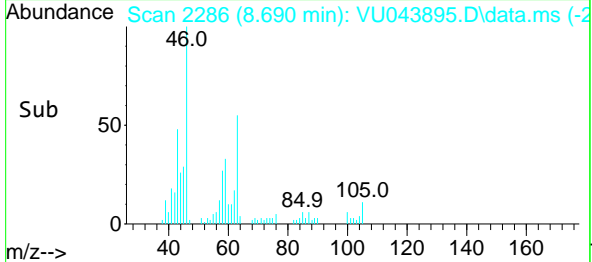
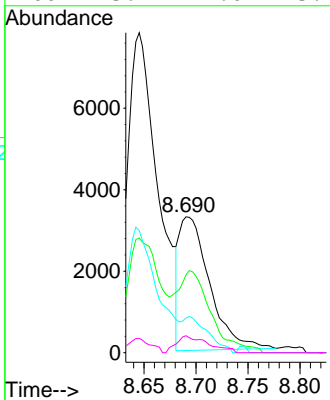
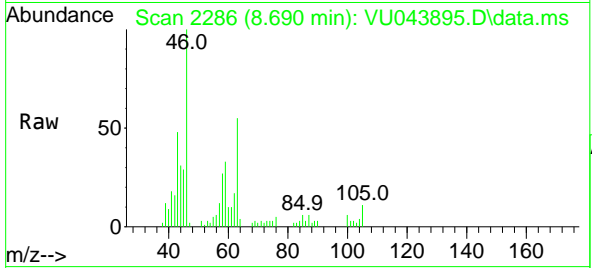




#48  
 2-Hexanone  
 Concen: 0.85 ug/L  
 RT: 8.690 min Scan# 2286  
 Delta R.T. -0.003 min  
 Lab File: VU043895.D  
 Acq: 21 May 2021 17:34

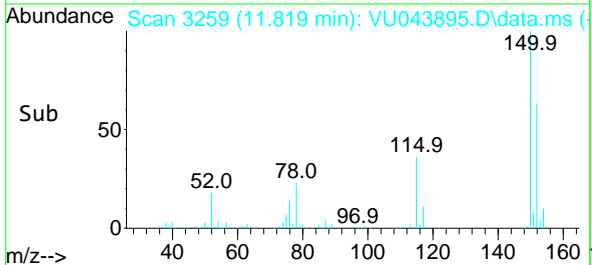
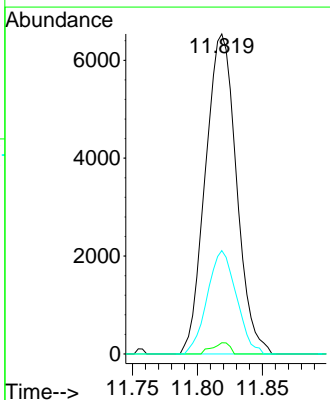
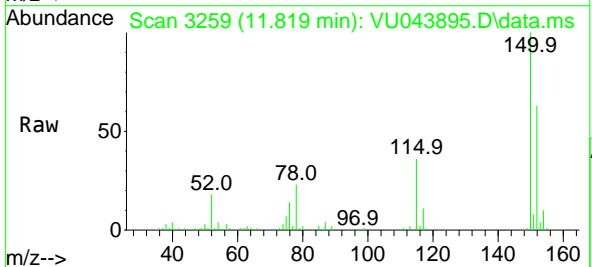
Instrument :  
 MSVOA\_U  
 ClientSampled :  
 COGJ9DL

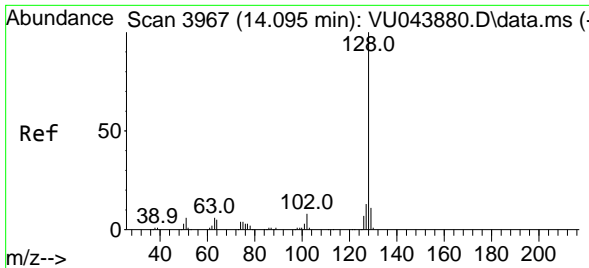
Tgt Ion	Resp	Lower	Upper
43	6671		
58	65.9	47.0	70.4
57	20.3	15.8	23.8
100	13.2	9.0	13.4



#61  
 1,2,3-Trichloropropane  
 Concen: 1.16 ug/L  
 RT: 11.819 min Scan# 3259  
 Delta R.T. 0.987 min  
 Lab File: VU043895.D  
 Acq: 21 May 2021 17:34

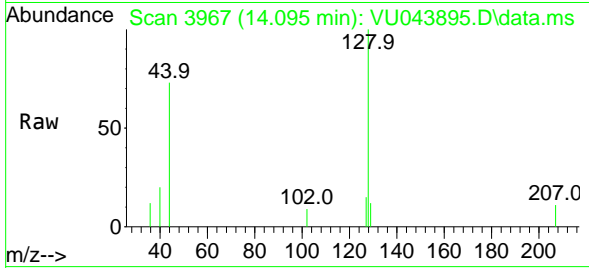
Tgt Ion	Resp	Lower	Upper
75	10859		
110	2.0	27.9	41.9#
77	30.3	25.9	38.9





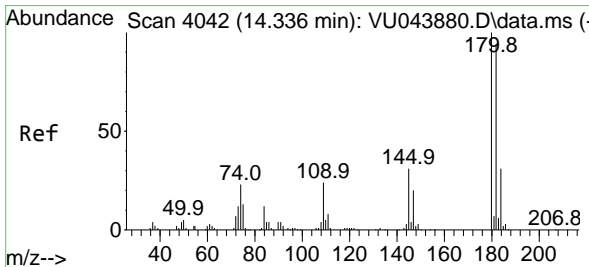
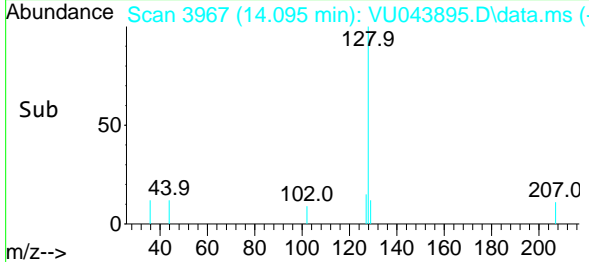
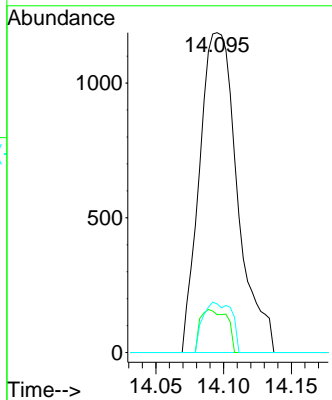
#71  
 Naphthalene  
 Concen: 0.07 ug/L  
 RT: 14.095 min Scan# 3967  
 Delta R.T. 0.000 min  
 Lab File: VU043895.D  
 Acq: 21 May 2021 17:34

Instrument :  
 MSVOA\_U  
 ClientSampled :  
 COGJ9DL

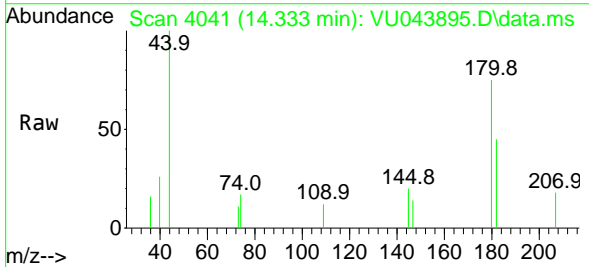


Tgt Ion:128 Resp: 2316

Ion	Ratio	Lower	Upper
128	100		
129	9.4	8.7	13.1
127	11.8	10.2	15.4



#72  
 1,2,3-Trichlorobenzene  
 Concen: 0.06 ug/L  
 RT: 14.333 min Scan# 4041  
 Delta R.T. -0.003 min  
 Lab File: VU043895.D  
 Acq: 21 May 2021 17:34



Tgt Ion:180 Resp: 999

Ion	Ratio	Lower	Upper
180	100		
182	83.5	77.0	115.4
145	18.8	24.6	36.8#

