

Data Path : Z:\VOASRV\HPCHEM1\MSVOA U\DATA\VU052219\  
 Data File : VU032253.D  
 Acq On : 23 May 2019 04:43  
 Operator : JC/SP  
 Sample : K3001-08  
 Misc : 25.0mL/MSVOA U/WATER  
 ALS Vial : 41 Sample Multiplier: 1

Instrument :  
 MSVOA\_U  
 ClientSampleId :  
 E3YF3

Integration Parameters: rteint.p  
 Integrator: RTE  
 Smoothing : ON  
 Sampling : 1  
 Start Thrs: 0.1  
 Stop Thrs : 0

Filtering: 5  
 Min Area: 3 % of largest Peak  
 Max Peaks: 100  
 Peak Location: TOP

If leading or trailing edge < 100 prefer < Baseline drop else tangent >  
 Peak separation: 5

Method : Z:\VOASRV\HPCHEM1\MSVOA\_U\METHOD\SOMUTR052219WMA.M  
 Title : TRACE VOA SOM01.0

Signal : TIC

peak #	R.T. min	first scan	max scan	last scan	PK TY	peak height	corr. area	corr. % max.	% of total
1	1.183	23	29	35	rBV2	13638	13578	1.17%	0.133%
2	1.299	59	65	72	rBV	86361	82722	7.10%	0.812%
3	1.395	86	95	112	rVB	176281	211398	18.15%	2.075%
4	1.678	175	183	192	rVB	137101	167096	14.34%	1.640%
5	2.270	356	367	378	rBV	314680	469035	40.26%	4.604%
6	2.334	378	387	402	rVB2	54352	104768	8.99%	1.028%
7	2.498	420	438	453	rBV2	14316	52499	4.51%	0.515%
8	2.836	532	543	560	rBV	32341	71440	6.13%	0.701%
9	3.183	647	651	663	rVB5	7424	12181	1.05%	0.120%
10	3.990	888	902	917	rBV7	8684	21717	1.86%	0.213%
11	4.199	954	967	1009	rBV2	148867	489673	42.03%	4.807%
12	4.643	1086	1105	1131	rBV	219826	531447	45.62%	5.217%
13	5.334	1297	1320	1346	rBV2	429022	1164921	100.00%	11.436%
14	5.884	1477	1491	1525	rBV	396830	816939	70.13%	8.020%
15	6.328	1615	1629	1650	rBV	253825	518640	44.52%	5.091%
16	7.228	1897	1909	1927	rBV	107685	200938	17.25%	1.973%
17	7.562	2000	2013	2029	rBV	519444	929721	79.81%	9.127%
18	7.636	2030	2036	2049	rVB3	17264	33191	2.85%	0.326%
19	7.852	2093	2103	2123	rBV	65242	119576	10.26%	1.174%
20	8.315	2235	2247	2280	rBV	580233	1123165	96.42%	11.026%
21	9.086	2474	2487	2515	rBV	609545	1040566	89.33%	10.215%
22	9.376	2568	2577	2589	rBV3	22917	38171	3.28%	0.375%
23	10.427	2888	2904	2920	rBV	197216	329111	28.25%	3.231%
24	11.003	3072	3083	3093	rBV2	6984	12220	1.05%	0.120%
25	11.482	3217	3232	3261	rBV	494849	854115	73.32%	8.385%
26	11.858	3334	3349	3370	rBV	450795	777696	66.76%	7.635%

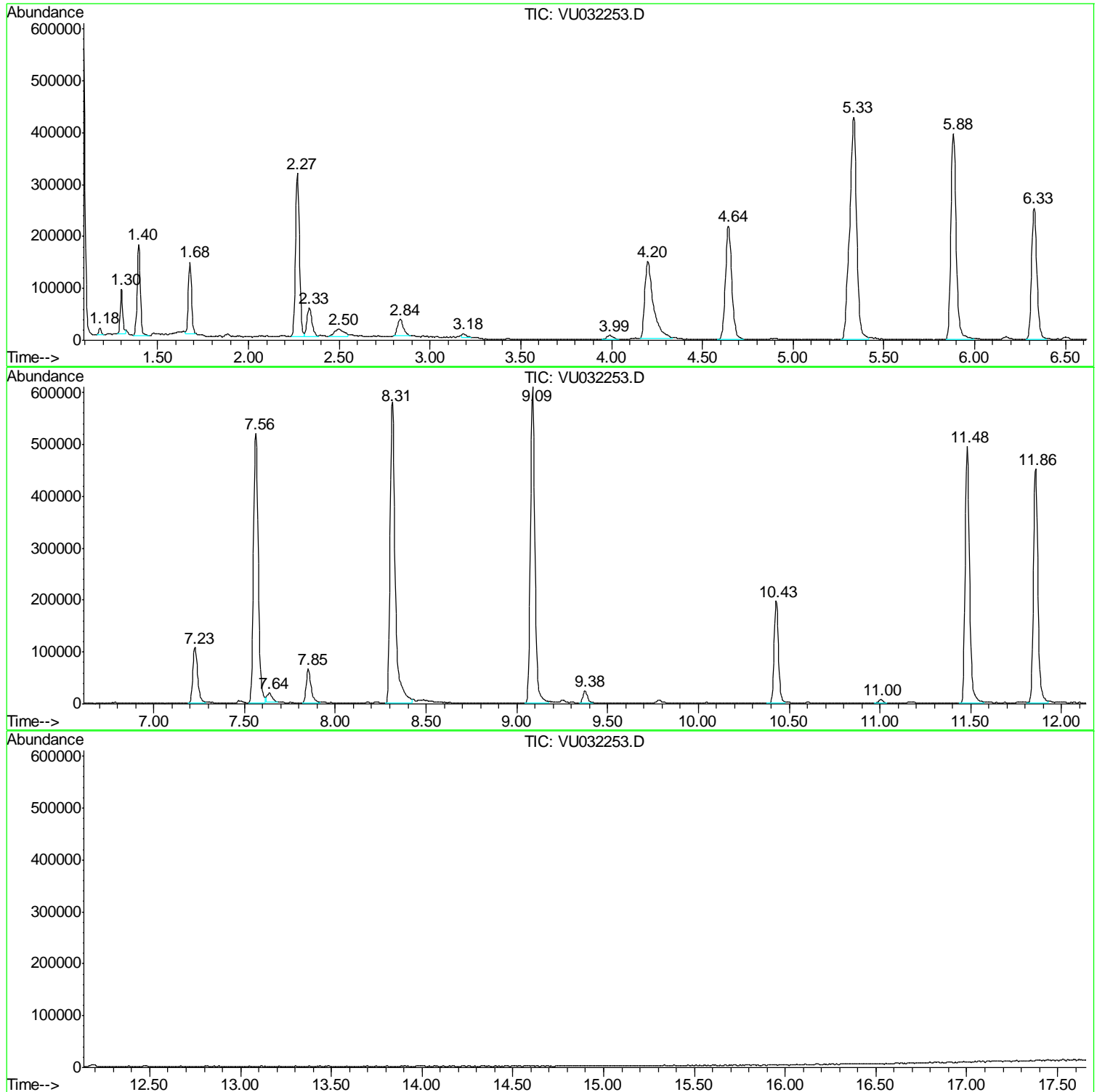
Sum of corrected areas: 10186524

Data Path : Z:\VOASRV\HPCHEM1\MSVOA U\DATA\VU052219\  
Data File : VU032253.D  
Acq On : 23 May 2019 04:43  
Operator : JC/SP  
Sample : K3001-08  
Misc : 25.0mL/MSVOA U/WATER  
ALS Vial : 41 Sample Multiplier: 1

Instrument :  
MSVOA\_U  
ClientSampled :  
E3YF3

Quant Method : Z:\VOASRV\HPCHEM1\MSVOA\_U\METHOD\SOMUTR052219WMA.M  
Quant Title : TRACE VOA SOM01.0

TIC Library : C:\DATABASE\NIST11.L  
TIC Integration Parameters: LSCINT.P



Data Path : Z:\VOASRV\HPCHEM1\MSVOA U\DATA\VU052219\  
 Data File : VU032253.D  
 Acq On : 23 May 2019 04:43  
 Operator : JC/SP  
 Sample : K3001-08  
 Misc : 25.0mL/MSVOA U/WATER  
 ALS Vial : 41 Sample Multiplier: 1

Instrument :  
 MSVOA\_U  
 ClientSampled :  
 E3YF3

Quant Method : Z:\VOASRV\HPCHEM1\MSVOA\_U\METHOD\SOMUTR052219WMA.M  
 Quant Title : TRACE VOA SOM01.0

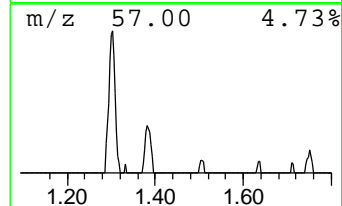
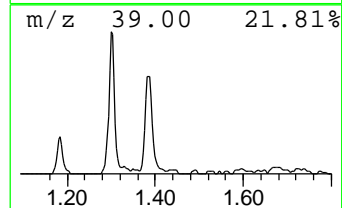
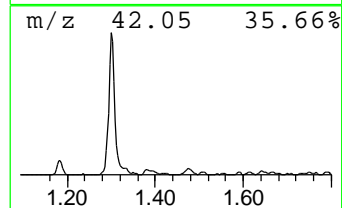
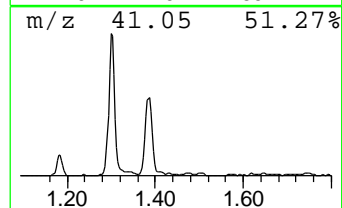
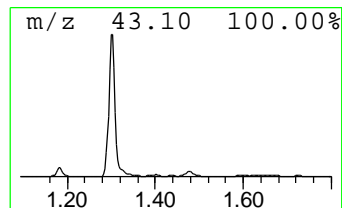
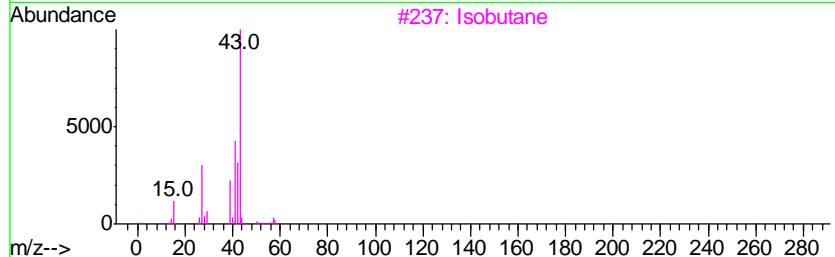
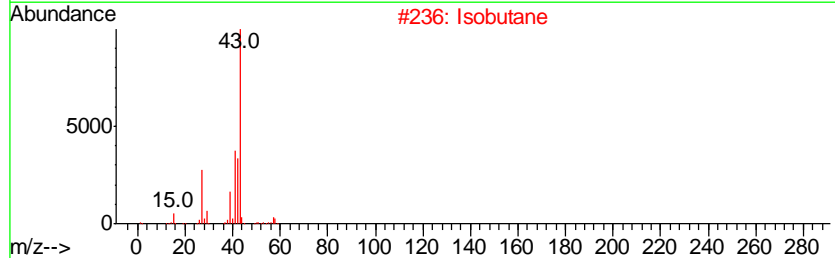
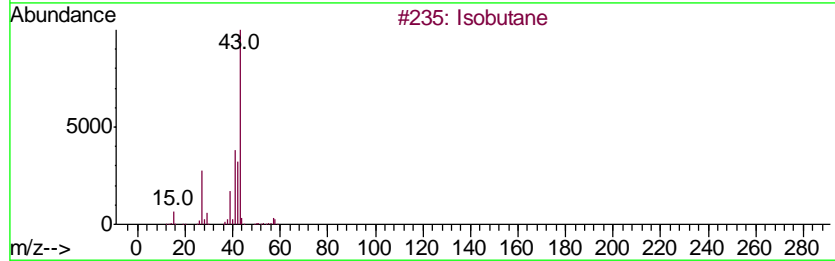
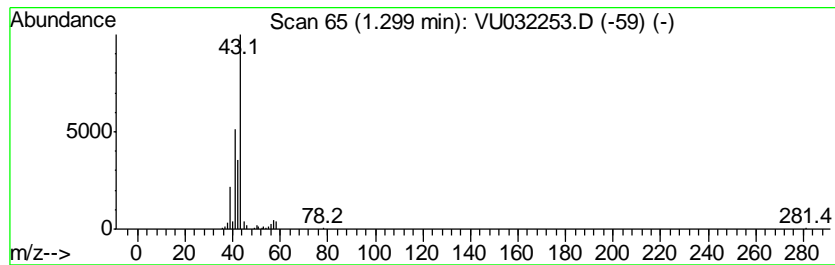
TIC Library : C:\DATABASE\NIST11.L  
 TIC Integration Parameters: LSCINT.P

\*\*\*\*\*  
 Peak Number 1 (DEL) Alkane: Straight-Chai... Concentration Rank 2

R.T.	EstConc	Area	Relative to ISTD	R.T.
1.30	0.51 ug/L	82722	1,4-Difluorobenzene	5.88

Hit#	of	Tentative ID	MW	MolForm	CAS#	Qual
1	5	Isobutane	58	C4H10	000075-28-5	64
2		Isobutane	58	C4H10	000075-28-5	64
3		Isobutane	58	C4H10	000075-28-5	50
4		Propane, 2-nitro-	89	C3H7NO2	000079-46-9	23
5		Isobutane	58	C4H10	000075-28-5	9



Data Path : Z:\VOASRV\HPCHEM1\MSVOA\_U\DATA\VU052219\  
Data File : VU032253.D  
Acq On : 23 May 2019 04:43  
Operator : JC/SP  
Sample : K3001-08  
Misc : 25.0mL/MSVOA\_U/WATER  
ALS Vial : 41 Sample Multiplier: 1

Instrument :  
MSVOA\_U  
ClientSampleId :  
E3YF3

Quant Method : Z:\VOASRV\HPCHEM1\MSVOA\_U\METHOD\SOMUTR052219WMA.M  
Quant Title : TRACE VOA SOM01.0

TIC Library : C:\DATABASE\NIST11.L  
TIC Integration Parameters: LSCINT.P

TIC Top Hit name	RT	EstConc	Units	Response	--Internal Standard--			
					#	RT	Resp	Conc
(DEL) Alkane: Str...	1.30	0.5	ug/L	82722	1	5.88	816939	5.0