

Data Path : Z:\voasrv\HPCHEM1\MSVOA_U\Data\VU052223\
 Data File : VU054241.D
 Acq On : 22 May 2023 12:43
 Operator : JC/MD
 Sample : 02874-06
 Misc : 25.0mL/MSVOA_U/WATER
 ALS Vial : 11 Sample Multiplier: 1

Instrument :
 MSVOA_U
 ClientSampleId :
 CONY8

Quant Time: May 22 13:14:17 2023
 Quant Method : Z:\voasrv\HPCHEM1\MSVOA_U\Method\SFAMUTR051823WMA.M
 Quant Title : TRACE VOA SFAM1.0
 QLast Update : Sat May 20 02:06:23 2023
 Response via : Initial Calibration

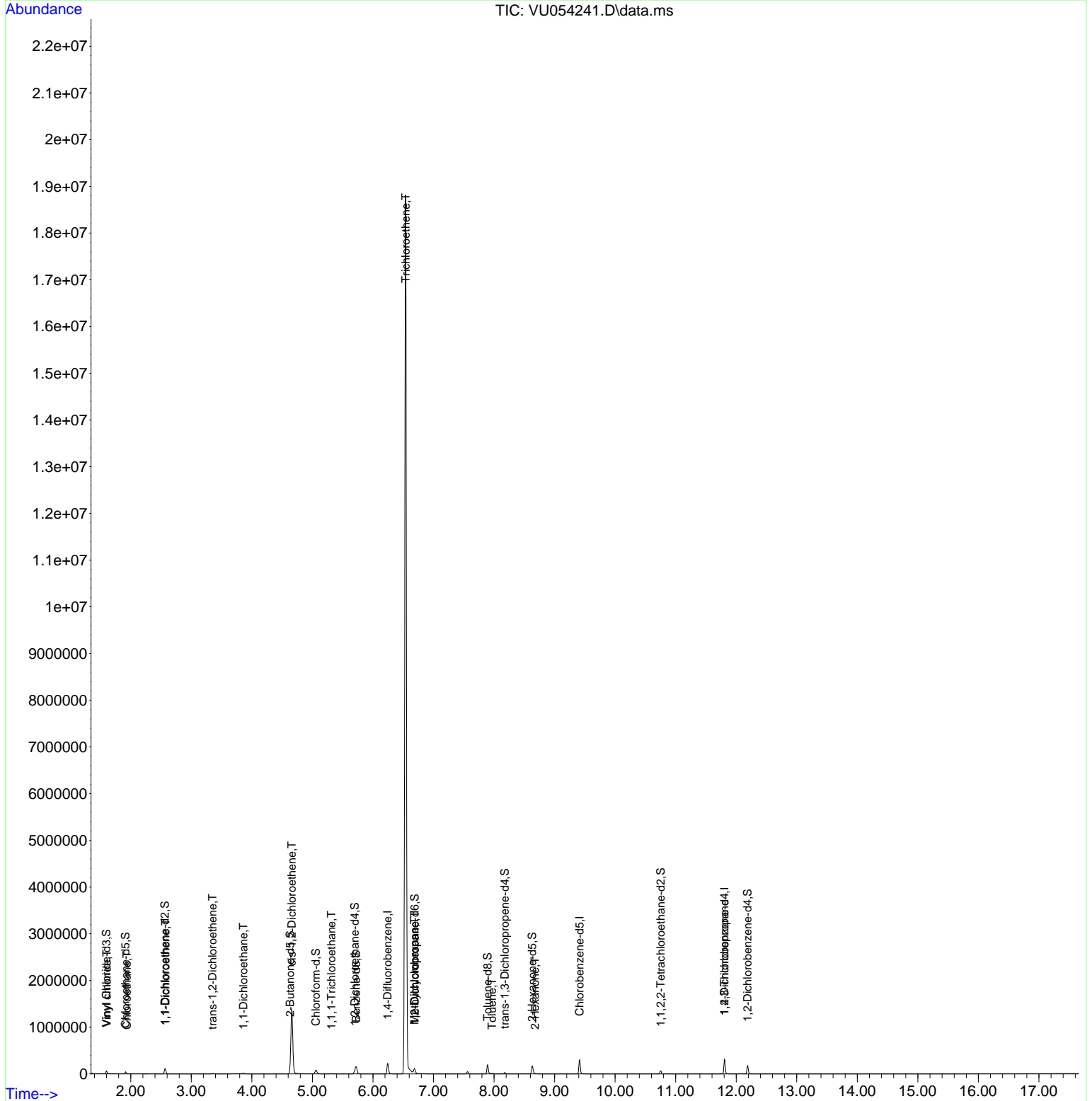
Compound	R.T.	QIon	Response	Conc	Units	Dev(Min)
Internal Standards						
1) 1,4-Difluorobenzene	6.244	114	188412	5.000	ug/L	0.00
28) Chlorobenzene-d5	9.414	117	177052	5.000	ug/L	0.00
58) 1,4-Dichlorobenzene-d4	11.806	152	86576	5.000	ug/L	0.00
System Monitoring Compounds						
4) Vinyl Chloride-d3	1.598	65	38481	3.788	ug/L	0.00
Spiked Amount	5.000	Range 40 - 130	Recovery	=	75.800%	
7) Chloroethane-d5	1.913	69	32177	4.234	ug/L	0.00
Spiked Amount	5.000	Range 65 - 130	Recovery	=	84.600%	
11) 1,1-Dichloroethene-d2	2.562	65	18083	3.942	ug/L	0.00
Spiked Amount	5.000	Range 60 - 125	Recovery	=	78.800%	
20) 2-Butanone-d5	4.633	46	87023	48.039	ug/L	0.00
Spiked Amount	50.000	Range 40 - 130	Recovery	=	96.080%	
24) Chloroform-d	5.057	84	76800	4.021	ug/L	0.00
Spiked Amount	5.000	Range 70 - 125	Recovery	=	80.400%	
26) 1,2-Dichloroethane-d4	5.700	65	37634	4.283	ug/L	0.00
Spiked Amount	5.000	Range 70 - 130	Recovery	=	85.600%	
32) Benzene-d6	5.723	84	152472	4.229	ug/L	0.00
Spiked Amount	5.000	Range 70 - 125	Recovery	=	84.600%	
36) 1,2-Dichloropropane-d6	6.688	67	46924	4.503	ug/L	0.00
Spiked Amount	5.000	Range 60 - 140	Recovery	=	90.000%	
41) Toluene-d8	7.893	98	132493	3.891	ug/L	0.00
Spiked Amount	5.000	Range 70 - 130	Recovery	=	77.800%	
43) trans-1,3-Dichloroprop...	8.176	79	17235	4.094	ug/L	0.00
Spiked Amount	5.000	Range 55 - 130	Recovery	=	81.800%	
46) 2-Hexanone-d5	8.630	63	61114	48.763	ug/L	0.00
Spiked Amount	50.000	Range 45 - 130	Recovery	=	97.520%	
56) 1,1,2,2-Tetrachloroeth...	10.752	84	34581	4.629	ug/L	0.00
Spiked Amount	5.000	Range 65 - 120	Recovery	=	92.600%	
66) 1,2-Dichlorobenzene-d4	12.189	152	48685	4.608	ug/L	0.00
Spiked Amount	5.000	Range 80 - 120	Recovery	=	92.200%	
Target Compounds						
5) Vinyl chloride	1.604	62	10502	0.749	ug/L #	79
8) Chloroethane	1.935	64	2917	0.328	ug/L	98
12) 1,1-Dichloroethene	2.575	96	13876	1.203	ug/L #	14
18) trans-1,2-Dichloroethene	3.350	96	4109	0.350	ug/L	90
19) 1,1-Dichloroethane	3.861	63	7378	0.314	ug/L	96
22) cis-1,2-Dichloroethene	4.659	96	728996	53.153	ug/L	97
29) 1,1,1-Trichloroethane	5.315	97	6189	0.279	ug/L	96
34) Trichloroethene	6.540	95	6444054	478.141	ug/L	98
35) Methylcyclohexane	6.684	83	12093	0.614	ug/L #	17
37) 1,2-Dichloropropane	6.688	63	4940	0.375	ug/L #	88
42) Toluene	7.967	91	11224	0.212	ug/L	91
48) 2-Hexanone	8.678	43	3082	0.609	ug/L #	82
61) 1,2,3-Trichloropropane	11.806	75	10026	1.428	ug/L #	65

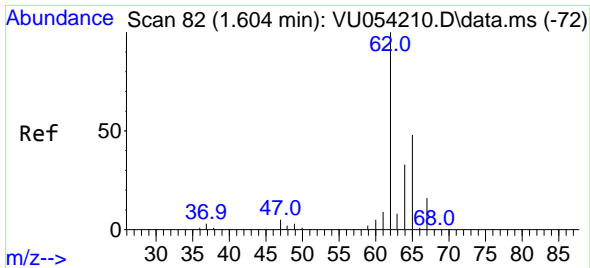
(#) = qualifier out of range (m) = manual integration (+) = signals summed

Data Path : Z:\voasrv\HPCHEM1\MSVOA_U\Data\VU052223\
 Data File : VU054241.D
 Acq On : 22 May 2023 12:43
 Operator : JC/MD
 Sample : 02874-06
 Misc : 25.0mL/MSVOA_U/WATER
 ALS Vial : 11 Sample Multiplier: 1

Instrument :
 MSVOA_U
 ClientSampleId :
 CONY8

Quant Time: May 22 13:14:17 2023
 Quant Method : Z:\voasrv\HPCHEM1\MSVOA_U\Method\SFAMUTR051823WMA.M
 Quant Title : TRACE VOA SFAM1.0
 QLast Update : Sat May 20 02:06:23 2023
 Response via : Initial Calibration

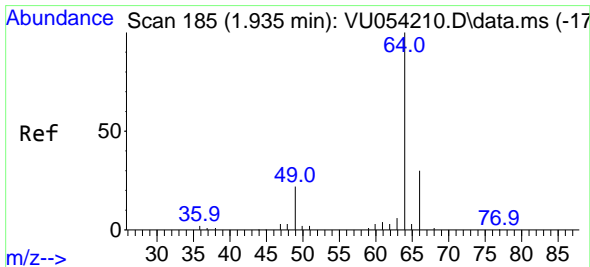
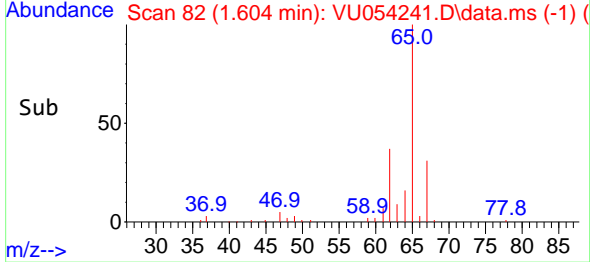
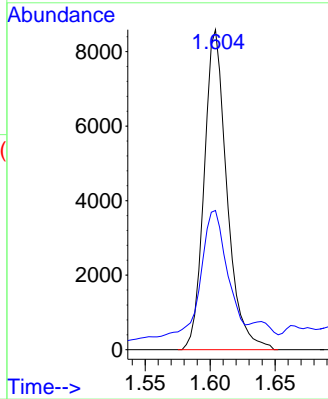
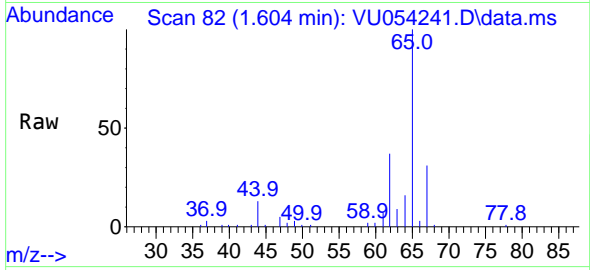




#5
 Vinyl chloride
 Concen: 0.749 ug/L
 RT: 1.604 min Scan# 81
 Delta R.T. 0.000 min
 Lab File: VU054241.D
 Acq: 22 May 2023 12:43

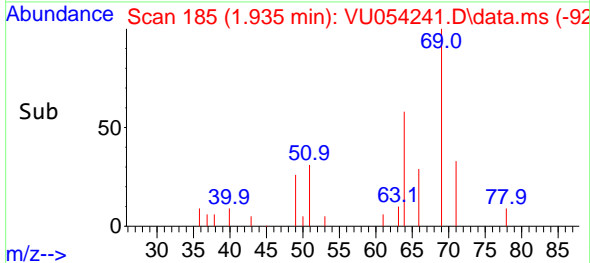
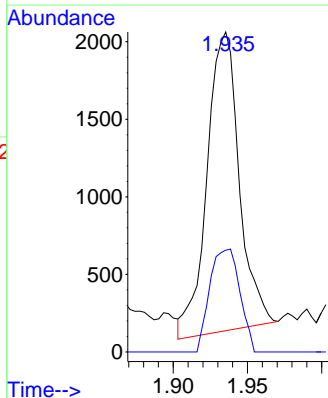
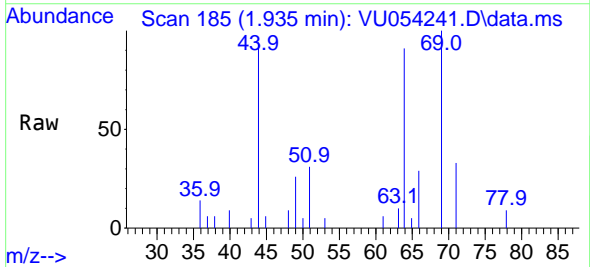
Instrument :
 MSVOA_U
 ClientSampleId :
 CONY8

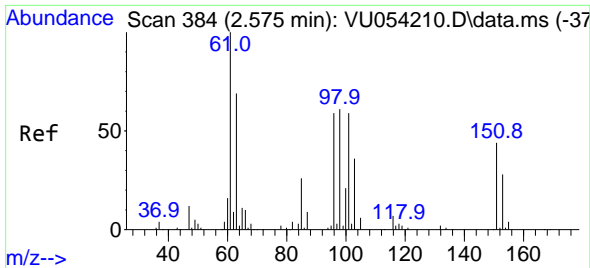
Tgt Ion: 62 Resp: 10502
 Ion Ratio Lower Upper
 62 100
 64 43.5 22.4 41.6#



#8
 Chloroethane
 Concen: 0.328 ug/L
 RT: 1.935 min Scan# 185
 Delta R.T. 0.000 min
 Lab File: VU054241.D
 Acq: 22 May 2023 12:43

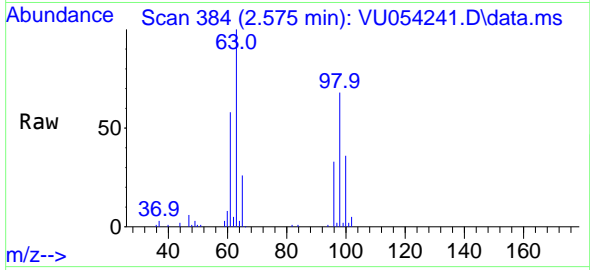
Tgt Ion: 64 Resp: 2917
 Ion Ratio Lower Upper
 64 100
 66 31.8 21.6 40.0



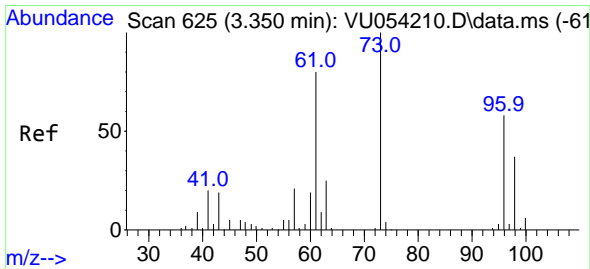
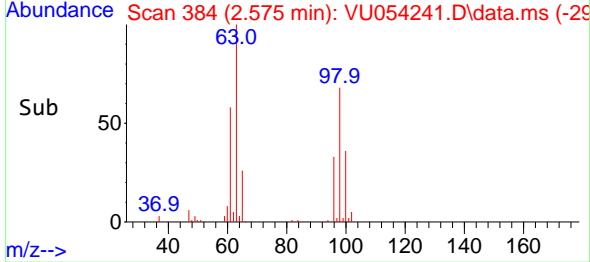
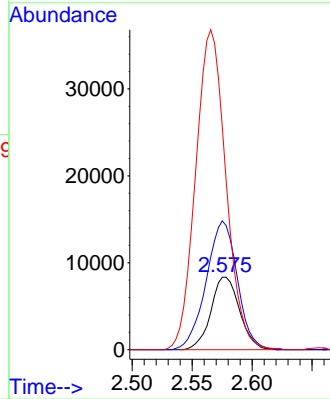


#12
 1,1-Dichloroethene
 Concen: 1.203 ug/L
 RT: 2.575 min Scan# 384
 Delta R.T. 0.001 min
 Lab File: VU054241.D
 Acq: 22 May 2023 12:43

Instrument : MSVOA_U
 ClientSampleId : CONY8

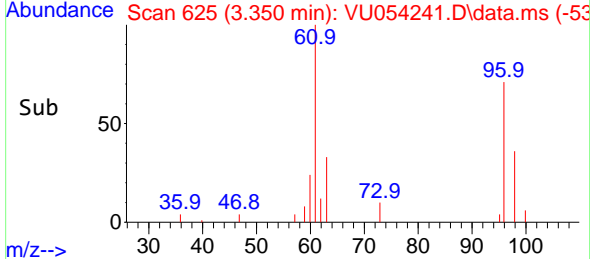
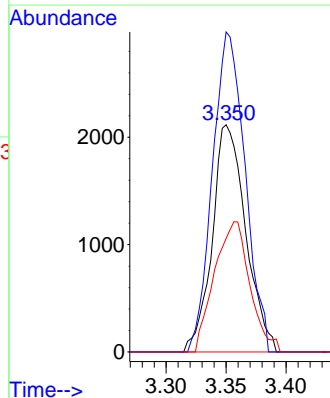
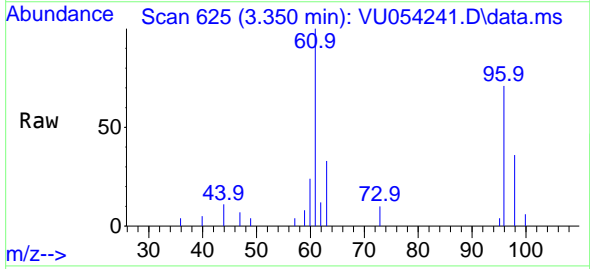


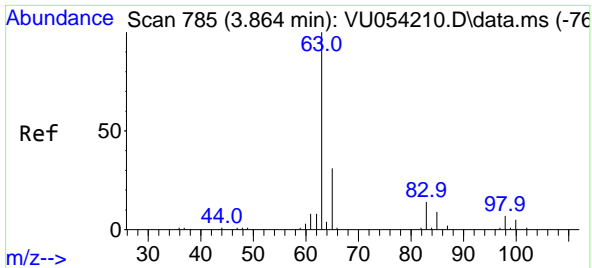
Tgt Ion: 96 Resp: 13876
 Ion Ratio Lower Upper
 96 100
 61 177.5 114.7 212.9
 63 307.5 68.6 127.4#



#18
 trans-1,2-Dichloroethene
 Concen: 0.350 ug/L
 RT: 3.350 min Scan# 625
 Delta R.T. 0.000 min
 Lab File: VU054241.D
 Acq: 22 May 2023 12:43

Tgt Ion: 96 Resp: 4109
 Ion Ratio Lower Upper
 96 100
 61 140.8 94.1 174.8
 98 50.0 45.3 84.1



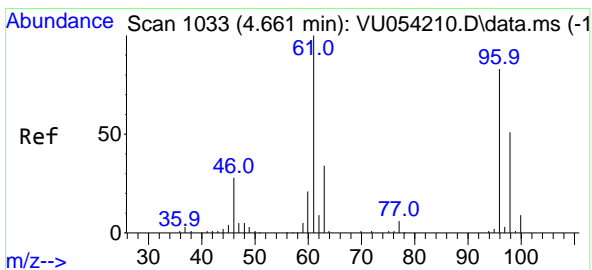
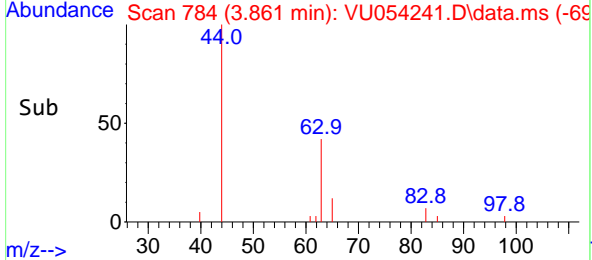
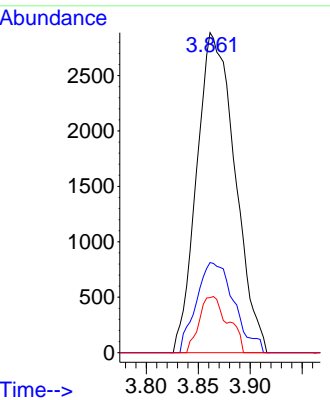
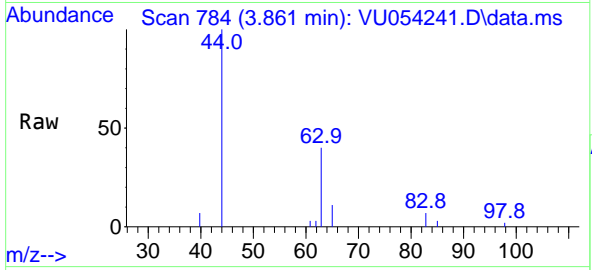


#19
 1,1-Dichloroethane
 Concen: 0.314 ug/L
 RT: 3.861 min Scan# 71
 Delta R.T. -0.003 min
 Lab File: VU054241.D
 Acq: 22 May 2023 12:43

Instrument : MSVOA_U
 ClientSampleId : CONY8

Tgt Ion: 63 Resp: 7378

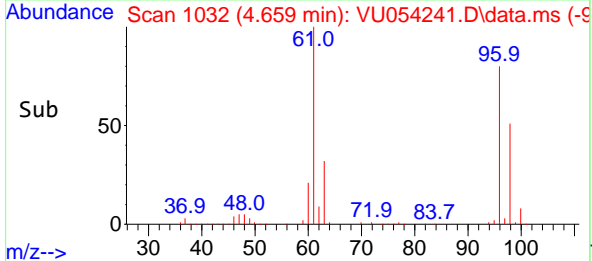
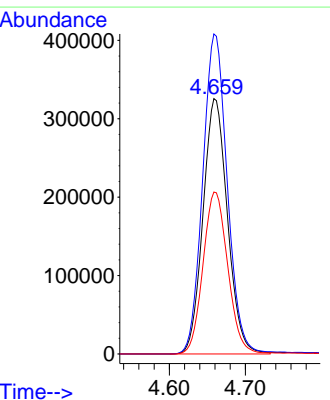
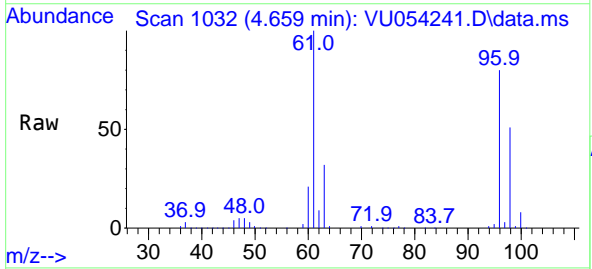
Ion	Ratio	Lower	Upper
63	100		
65	28.1	20.7	38.5
83	17.2	10.1	18.7

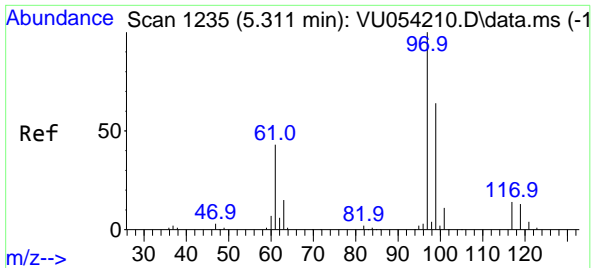


#22
 cis-1,2-Dichloroethene
 Concen: 53.153 ug/L
 RT: 4.659 min Scan# 1032
 Delta R.T. -0.003 min
 Lab File: VU054241.D
 Acq: 22 May 2023 12:43

Tgt Ion: 96 Resp: 728996

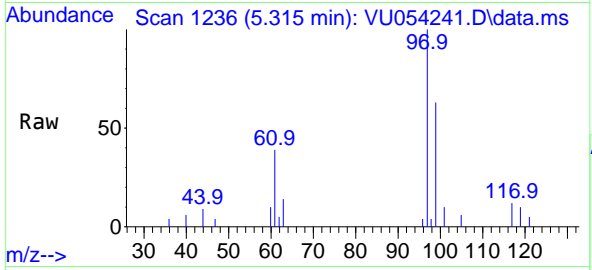
Ion	Ratio	Lower	Upper
96	100		
61	125.3	85.0	157.8
98	63.4	45.8	85.0





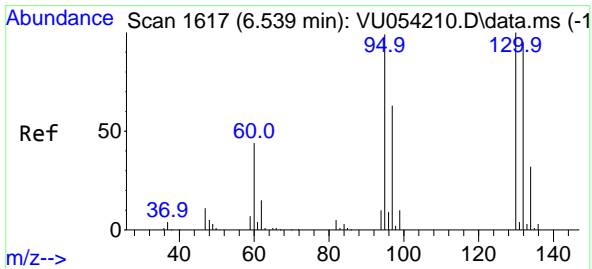
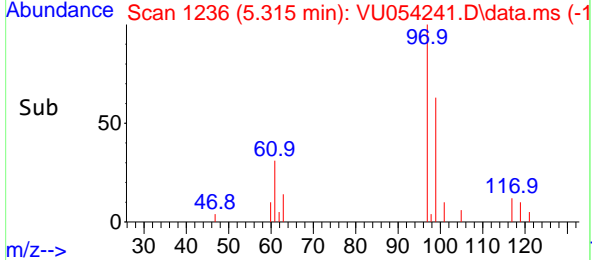
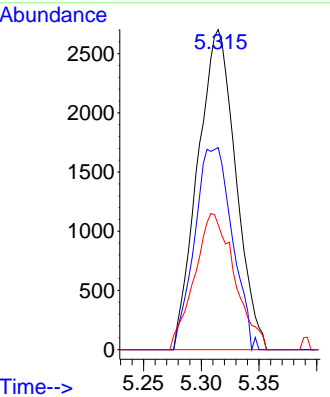
#29
 1,1,1-Trichloroethane
 Concen: 0.279 ug/L
 RT: 5.315 min Scan# 11
 Delta R.T. 0.004 min
 Lab File: VU054241.D
 Acq: 22 May 2023 12:43

Instrument : MSVOA_U
 ClientSampleId : CONY8

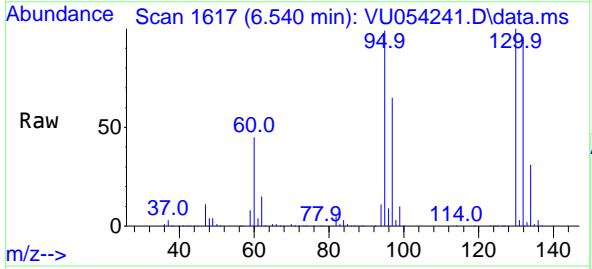


Tgt Ion: 97 Resp: 6189

Ion	Ratio	Lower	Upper
97	100		
99	62.6	51.8	77.6
61	44.9	33.4	50.2

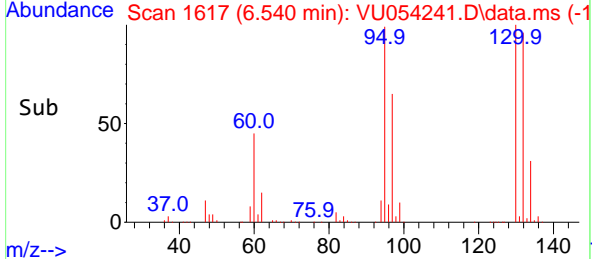
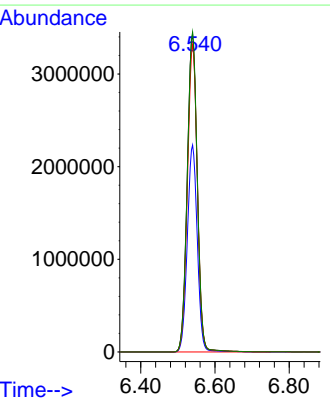


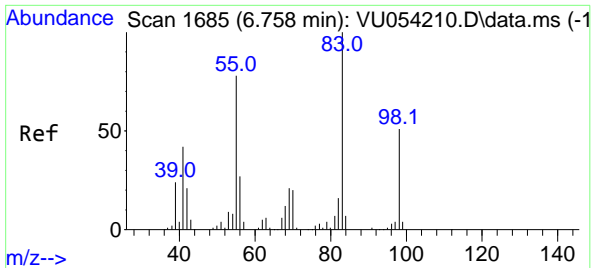
#34
 Trichloroethene
 Concen: 478.141 ug/L
 RT: 6.540 min Scan# 1617
 Delta R.T. 0.000 min
 Lab File: VU054241.D
 Acq: 22 May 2023 12:43



Tgt Ion: 95 Resp: 6444054

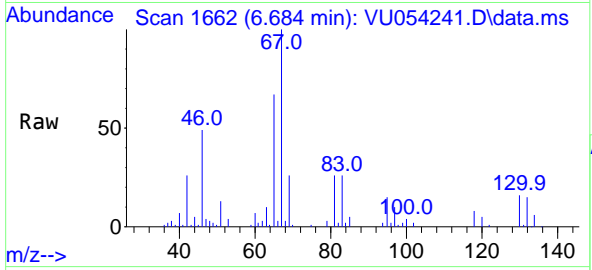
Ion	Ratio	Lower	Upper
95	100		
97	65.1	45.8	85.0
132	96.7	70.1	130.3
130	100.7	72.4	134.5





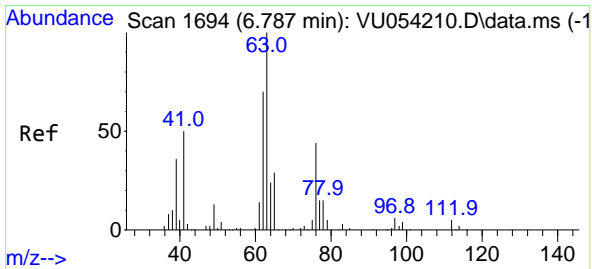
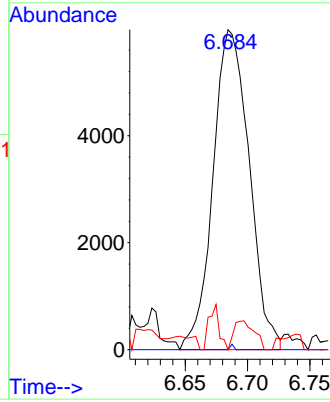
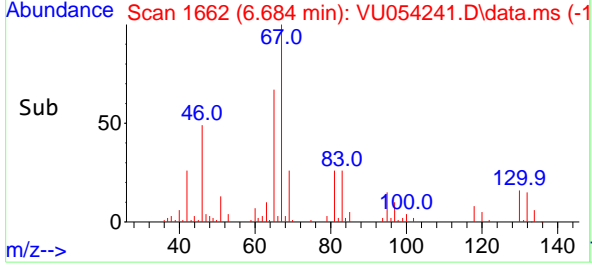
#35
 Methylcyclohexane
 Concen: 0.614 ug/L
 RT: 6.684 min Scan# 1662
 Delta R.T. -0.073 min
 Lab File: VU054241.D
 Acq: 22 May 2023 12:43

Instrument : MSVOA_U
 ClientSampleId : CONY8

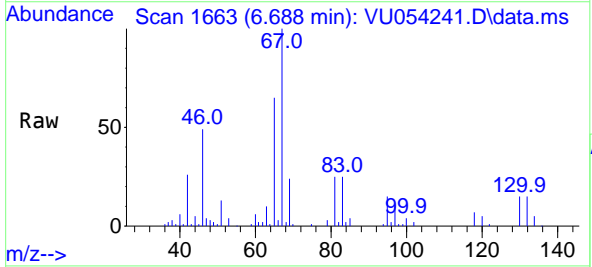


Tgt Ion: 83 Resp: 12093

Ion	Ratio	Lower	Upper
83	100		
55	0.2	61.6	92.4#
98	0.0	41.3	61.9#

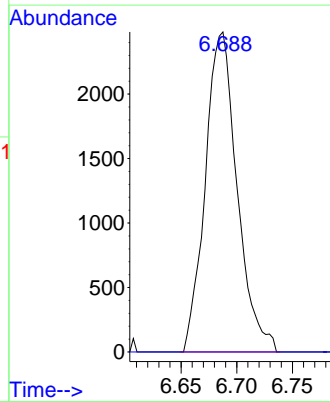
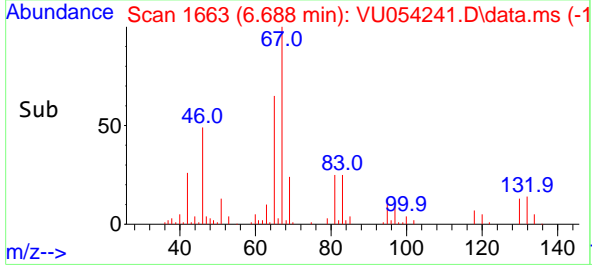


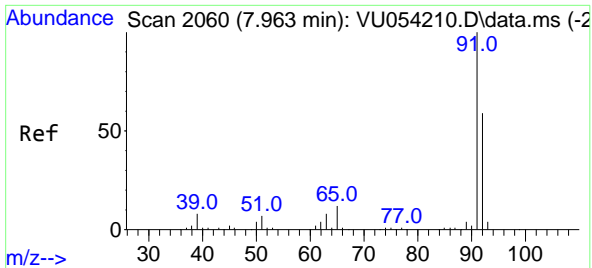
#37
 1,2-Dichloropropane
 Concen: 0.375 ug/L
 RT: 6.688 min Scan# 1663
 Delta R.T. -0.099 min
 Lab File: VU054241.D
 Acq: 22 May 2023 12:43



Tgt Ion: 63 Resp: 4940

Ion	Ratio	Lower	Upper
63	100		
112	0.0	3.3	4.9#



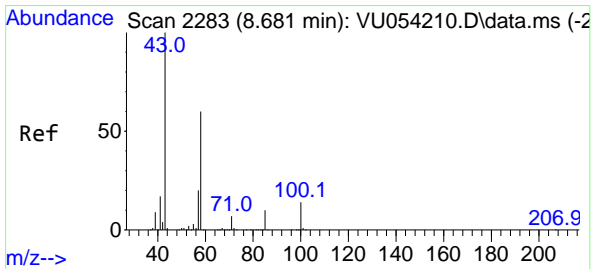
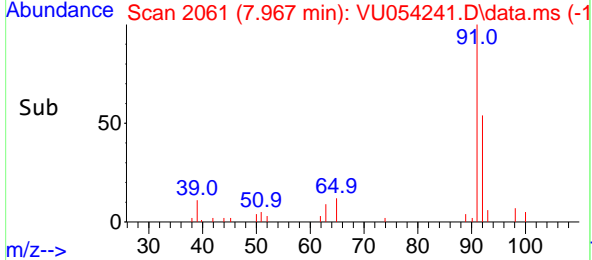
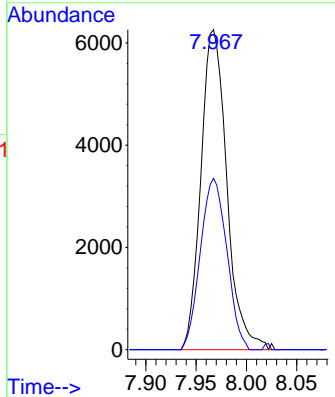
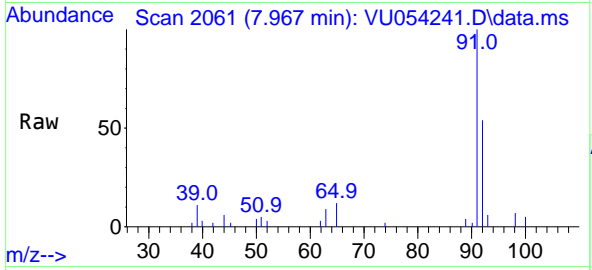


#42
 Toluene
 Concen: 0.212 ug/L
 RT: 7.967 min Scan# 2061
 Delta R.T. 0.004 min
 Lab File: VU054241.D
 Acq: 22 May 2023 12:43

Instrument : MSVOA_U
 ClientSampleId : CONY8

Tgt Ion: 91 Resp: 11224

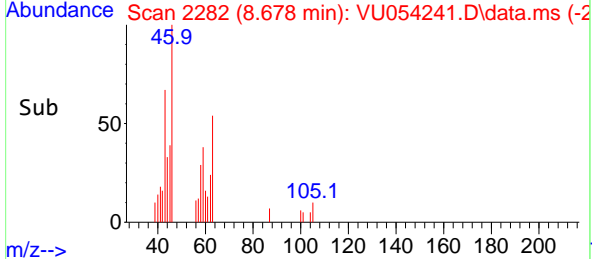
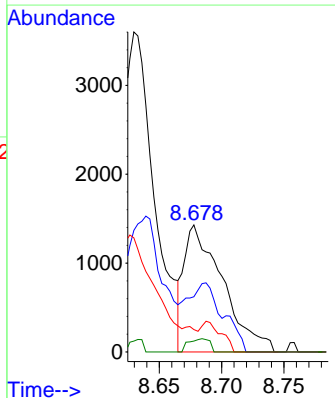
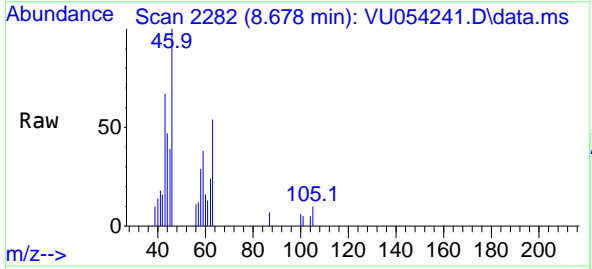
Ion	Ratio	Lower	Upper
91	100		
92	53.5	42.1	78.1

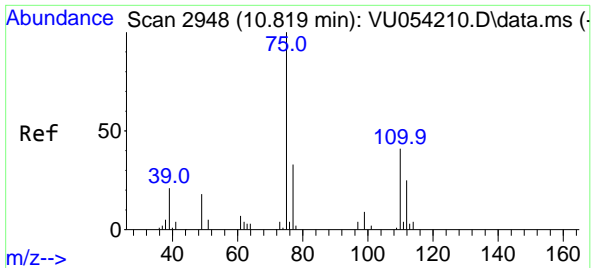


#48
 2-Hexanone
 Concen: 0.609 ug/L
 RT: 8.678 min Scan# 2282
 Delta R.T. -0.003 min
 Lab File: VU054241.D
 Acq: 22 May 2023 12:43

Tgt Ion: 43 Resp: 3082

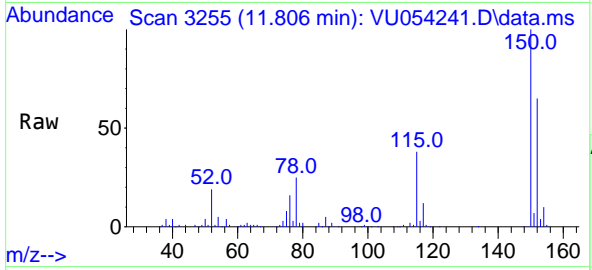
Ion	Ratio	Lower	Upper
43	100		
58	48.1	48.6	72.8#
57	12.2	16.7	25.1#
100	5.6	11.4	17.2#





#61
 1,2,3-Trichloropropane
 Concen: 1.428 ug/L
 RT: 11.806 min Scan# 31
 Delta R.T. 0.988 min
 Lab File: VU054241.D
 Acq: 22 May 2023 12:43

Instrument : MSVOA_U
 ClientSampleId : CONY8



Tgt Ion: 75 Resp: 10026

Ion	Ratio	Lower	Upper
75	100		
110	2.2	32.3	48.5#
77	31.6	26.3	39.5

