

Data Path : Z:\voasrv\HPCHEM1\MSVOA_U\Data\VU052223\
 Data File : VU054246.D
 Acq On : 22 May 2023 15:57
 Operator : JC/MD
 Sample : 02874-03DL 20X
 Misc : 25.0mL/MSVOA_U/WATER
 ALS Vial : 17 Sample Multiplier: 1

Instrument :
 MSVOA_U
 ClientSampleId :
 C0NY5DL

Quant Time: May 23 04:01:13 2023
 Quant Method : Z:\voasrv\HPCHEM1\MSVOA_U\Method\SFAMUTR051823WMA.M
 Quant Title : TRACE VOA SFAM1.0
 QLast Update : Tue May 23 02:58:02 2023
 Response via : Initial Calibration

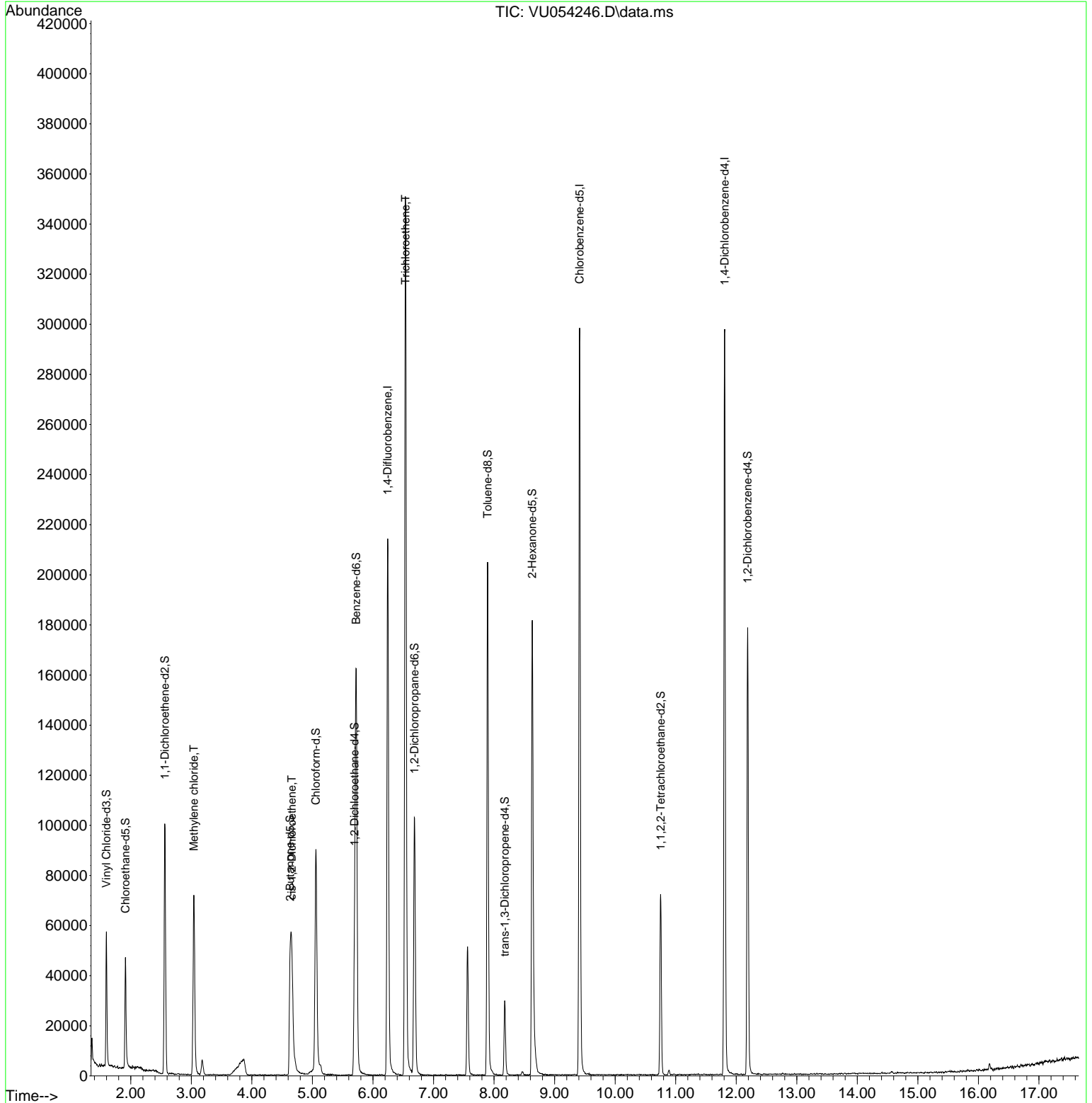
Compound	R.T.	QIon	Response	Conc	Units	Dev(Min)
Internal Standards						
1) 1,4-Difluorobenzene	6.243	114	181355	5.000	ug/L	0.00
28) Chlorobenzene-d5	9.414	117	172460	5.000	ug/L	0.00
58) 1,4-Dichlorobenzene-d4	11.809	152	82993	5.000	ug/L	0.00
System Monitoring Compounds						
4) Vinyl Chloride-d3	1.597	65	41448	4.239	ug/L	0.00
Spiked Amount	5.000	Range 40 - 130	Recovery	=	84.800%	
7) Chloroethane-d5	1.912	69	34146	4.668	ug/L	0.00
Spiked Amount	5.000	Range 65 - 130	Recovery	=	93.400%	
11) 1,1-Dichloroethene-d2	2.562	65	19035	4.311	ug/L	0.00
Spiked Amount	5.000	Range 60 - 125	Recovery	=	86.200%	
20) 2-Butanone-d5	4.633	46	94876	54.413	ug/L	0.00
Spiked Amount	50.000	Range 40 - 130	Recovery	=	108.820%	
24) Chloroform-d	5.057	84	83293	4.531	ug/L	0.00
Spiked Amount	5.000	Range 70 - 125	Recovery	=	90.600%	
26) 1,2-Dichloroethane-d4	5.697	65	40059	4.737	ug/L	0.00
Spiked Amount	5.000	Range 70 - 130	Recovery	=	94.800%	
32) Benzene-d6	5.722	84	157340	4.480	ug/L	0.00
Spiked Amount	5.000	Range 70 - 125	Recovery	=	89.600%	
36) 1,2-Dichloropropane-d6	6.684	67	51826	5.105	ug/L	0.00
Spiked Amount	5.000	Range 60 - 140	Recovery	=	102.200%	
41) Toluene-d8	7.893	98	136940	4.129	ug/L	0.00
Spiked Amount	5.000	Range 70 - 130	Recovery	=	82.600%	
43) trans-1,3-Dichloroprop...	8.176	79	17562	4.283	ug/L	0.00
Spiked Amount	5.000	Range 55 - 130	Recovery	=	85.600%	
46) 2-Hexanone-d5	8.629	63	63803	52.264	ug/L	0.00
Spiked Amount	50.000	Range 45 - 130	Recovery	=	104.520%	
56) 1,1,2,2-Tetrachloroeth...	10.751	84	37595	5.167	ug/L	0.00
Spiked Amount	5.000	Range 65 - 120	Recovery	=	103.400%	
66) 1,2-Dichlorobenzene-d4	12.188	152	51643	5.099	ug/L	0.00
Spiked Amount	5.000	Range 80 - 120	Recovery	=	102.000%	
Target Compounds						
16) Methylene chloride	3.041	84	36684	2.525	ug/L	94
22) cis-1,2-Dichloroethene	4.658	96	12807	0.970	ug/L	89
34) Trichloroethene	6.536	95	122071	9.299	ug/L	96

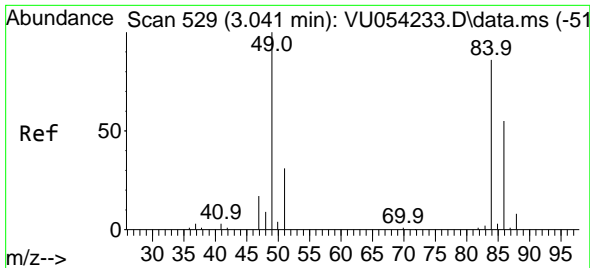
(#) = qualifier out of range (m) = manual integration (+) = signals summed

Data Path : Z:\voasrv\HPCHEM1\MSVOA_U\Data\VU052223\
 Data File : VU054246.D
 Acq On : 22 May 2023 15:57
 Operator : JC/MD
 Sample : 02874-03DL 20X
 Misc : 25.0mL/MSVOA_U/WATER
 ALS Vial : 17 Sample Multiplier: 1

Instrument :
 MSVOA_U
 ClientSampleId :
 C0NY5DL

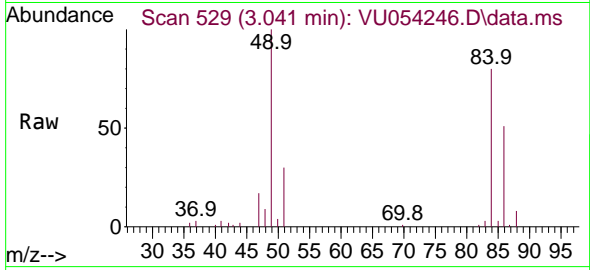
Quant Time: May 23 04:01:13 2023
 Quant Method : Z:\voasrv\HPCHEM1\MSVOA_U\Method\SFAMUTR051823WMA.M
 Quant Title : TRACE VOA SFAM1.0
 QLast Update : Tue May 23 02:58:02 2023
 Response via : Initial Calibration





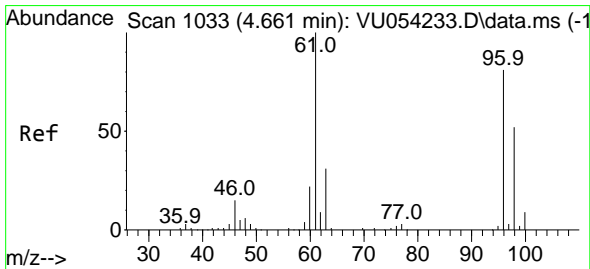
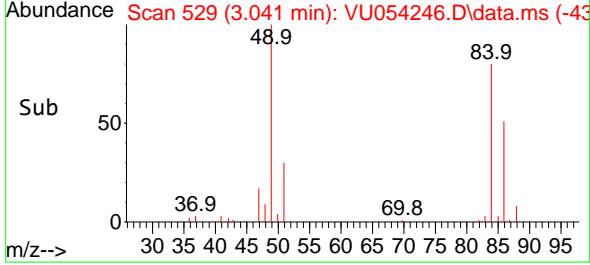
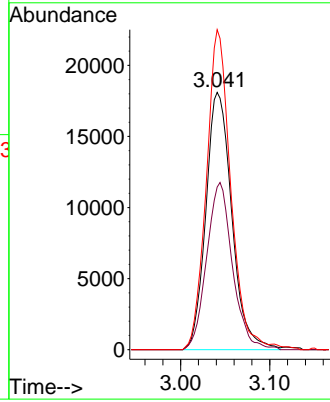
#16
 Methylene chloride
 Concen: 2.525 ug/L
 RT: 3.041 min Scan# 51
 Delta R.T. 0.000 min
 Lab File: VU054246.D
 Acq: 22 May 2023 15:57

Instrument :
 MSVOA_U
 ClientSampleId :
 CONY5DL



Tgt Ion: 84 Resp: 36684

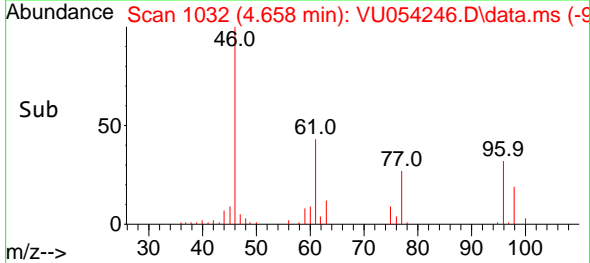
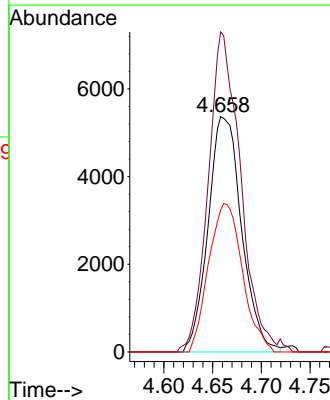
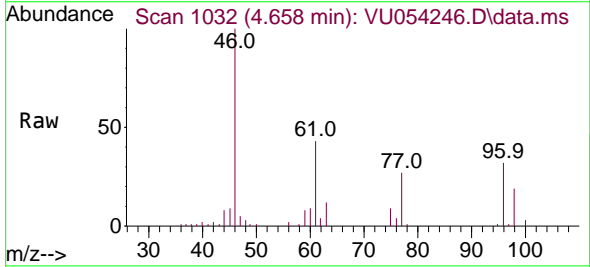
Ion	Ratio	Lower	Upper
84	100		
86	63.2	45.5	84.5
49	124.3	81.3	150.9

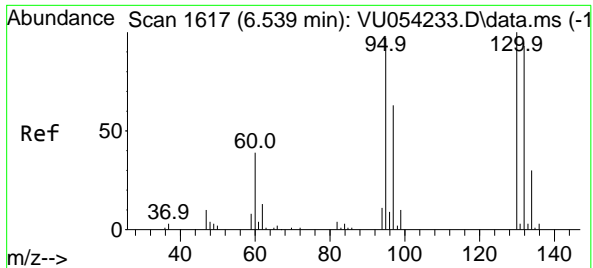


#22
 cis-1,2-Dichloroethene
 Concen: 0.970 ug/L
 RT: 4.658 min Scan# 1032
 Delta R.T. -0.003 min
 Lab File: VU054246.D
 Acq: 22 May 2023 15:57

Tgt Ion: 96 Resp: 12807

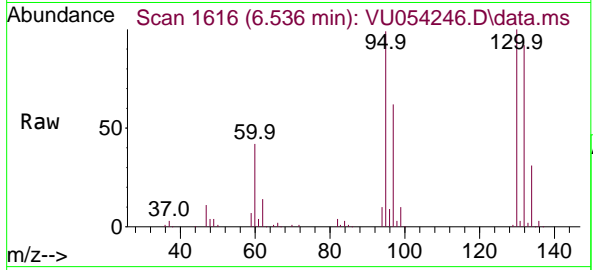
Ion	Ratio	Lower	Upper
96	100		
61	135.9	85.0	157.8
98	60.3	45.8	85.0





#34
 Trichloroethene
 Concen: 9.299 ug/L
 RT: 6.536 min Scan# 10
 Delta R.T. -0.003 min
 Lab File: VU054246.D
 Acq: 22 May 2023 15:57

Instrument : MSVOA_U
 ClientSampleId : C0NY5DL



Tgt Ion: 95 Resp: 122071

Ion	Ratio	Lower	Upper
95	100		
97	62.8	45.8	85.0
132	93.2	70.1	130.3
130	101.5	72.4	134.5

