

Data Path : W:\HPCHEM1\MSVOA U\DATA\VU052318\
 Data File : VU024048.D
 Acq On : 23 May 2018 20:11
 Operator : MD/SY
 Sample : J3088-18 50X
 Misc : 5.0mL/MSVOA U/WATER
 ALS Vial : 22 Sample Multiplier: 1

Integration Parameters: LSCINT.P

Integrator: RTE
 Smoothing : OFF Filtering: 5
 Sampling : 1 Min Area: 0 % of largest Peak
 Start Thrs: 0.2 Max Peaks: 100
 Stop Thrs : 0 Peak Location: TOP

If leading or trailing edge < 100 prefer < Baseline drop else tangent >
 Peak separation: 5

Method : W:\HPCHEM1\MSVOA_U\METHOD\SOMULM051218WMA.M
 Title : VOC Analysis

Signal : TIC

peak #	R.T. min	first scan	max scan	last scan	PK TY	peak height	corr. area	corr. % max.	% of total
1	0.648	15	18	21	rBV2	129	109	0.01%	0.001%
2	0.709	30	37	40	rBV2	96	127	0.01%	0.001%
3	1.092	137	156	179	rBV	691085	835452	79.73%	8.925%
4	1.185	181	185	191	rVB	6685	6703	0.64%	0.072%
5	1.397	245	251	266	rBV	120224	124886	11.92%	1.334%
6	1.680	331	339	354	rVB	99917	129179	12.33%	1.380%
7	2.272	512	523	535	rBV	208000	311034	29.68%	3.323%
8	2.455	571	580	586	rBV2	1928	3053	0.29%	0.033%
9	2.596	622	624	626	rBV	174	124	0.01%	0.001%
10	2.622	626	632	637	rVV3	481	777	0.07%	0.008%
11	2.703	651	657	668	rVB4	1091	1647	0.16%	0.018%
12	2.748	669	671	675	rBV2	93	85	0.01%	0.001%
13	2.841	689	700	713	rVB	2431	4989	0.48%	0.053%
14	3.018	751	755	759	rBV	186	150	0.01%	0.002%
15	3.137	789	792	793	rBV	177	82	0.01%	0.001%
16	3.214	812	816	818	rBV2	150	122	0.01%	0.001%
17	3.227	818	820	826	rVB2	139	112	0.01%	0.001%
18	3.259	826	830	833	rBV	195	124	0.01%	0.001%
19	3.358	856	861	863	rBV	162	132	0.01%	0.001%
20	3.384	866	869	871	rVB	262	163	0.02%	0.002%
21	3.400	871	874	876	rBV2	332	260	0.02%	0.003%
22	3.471	891	896	899	rBV	161	168	0.02%	0.002%
23	3.487	899	901	904	rVB	118	86	0.01%	0.001%
24	3.532	912	915	919	rVB	224	214	0.02%	0.002%
25	3.561	919	924	928	rBV2	216	259	0.02%	0.003%
26	3.606	935	938	940	rVB	123	80	0.01%	0.001%
27	3.622	940	943	945	rBV2	129	86	0.01%	0.001%
28	3.690	961	964	965	rBV	135	92	0.01%	0.001%
29	3.719	970	973	975	rBV2	176	144	0.01%	0.002%
30	3.892	1023	1027	1029	rBV	148	118	0.01%	0.001%
31	3.953	1044	1046	1050	rVB2	274	192	0.02%	0.002%
32	3.982	1050	1055	1057	rBV2	192	193	0.02%	0.002%
33	4.008	1057	1063	1064	rVV2	76	89	0.01%	0.001%
34	4.085	1081	1087	1092	rBV2	152	184	0.02%	0.002%

Data Path : W:\HPCHEM1\MSVOA U\DATA\VU052318\
 Data File : VU024048.D
 Acq On : 23 May 2018 20:11
 Operator : MD/SY
 Sample : J3088-18 50X
 Misc : 5.0mL/MSVOA U/WATER
 ALS Vial : 22 Sample Multiplier: 1

Integration Parameters: LSCINT.P

Integrator: RTE
 Smoothing : OFF Filtering: 5
 Sampling : 1 Min Area: 0 % of largest Peak
 Start Thrs: 0.2 Max Peaks: 100
 Stop Thrs : 0 Peak Location: TOP

If leading or trailing edge < 100 prefer < Baseline drop else tangent >
 Peak separation: 5

Method : W:\HPCHEM1\MSVOA_U\METHOD\SOMULM051218WMA.M
 Title : VOC Analysis

35	4.185	1103	1118	1153	rBV	131661	356439	34.02%	3.808%
36	4.503	1214	1217	1219	rBV	255	163	0.02%	0.002%
37	4.590	1241	1244	1246	rBV	161	135	0.01%	0.001%
38	4.654	1246	1264	1291	rVV	180568	432435	41.27%	4.620%
39	4.783	1302	1304	1307	rBV2	171	74	0.01%	0.001%
40	4.831	1315	1319	1321	rBV	162	113	0.01%	0.001%
41	4.847	1321	1324	1329	rVB2	261	136	0.01%	0.001%
42	4.886	1329	1336	1339	rBV	887	1086	0.10%	0.012%
43	4.956	1353	1358	1362	rBV2	165	171	0.02%	0.002%
44	4.989	1364	1368	1374	rVV3	433	489	0.05%	0.005%
45	5.030	1378	1381	1384	rBV	186	105	0.01%	0.001%
46	5.346	1452	1479	1515	rBV2	338602	1047832	100.00%	11.194%
47	5.551	1540	1543	1547	rVB2	548	349	0.03%	0.004%
48	5.651	1569	1574	1577	rBV3	151	153	0.01%	0.002%
49	5.696	1584	1588	1591	rBV2	217	127	0.01%	0.001%
50	5.751	1601	1605	1611	rVB3	207	306	0.03%	0.003%
51	5.783	1611	1615	1616	rBV2	119	80	0.01%	0.001%
52	5.828	1626	1629	1632	rBV	107	92	0.01%	0.001%
53	5.892	1634	1649	1683	rBV	327304	665616	63.52%	7.111%
54	6.153	1728	1730	1733	rVB	168	93	0.01%	0.001%
55	6.191	1733	1742	1756	rVB10	3291	6314	0.60%	0.067%
56	6.268	1763	1766	1769	rVB2	201	114	0.01%	0.001%
57	6.336	1772	1787	1818	rBV	252958	517908	49.43%	5.533%
58	6.574	1859	1861	1866	rBV	90	96	0.01%	0.001%
59	6.690	1891	1897	1900	rBV2	151	190	0.02%	0.002%
60	7.014	1995	1998	2001	rBV	125	78	0.01%	0.001%
61	7.069	2012	2015	2017	rBV	168	112	0.01%	0.001%
62	7.104	2023	2026	2028	rBV	151	108	0.01%	0.001%
63	7.233	2054	2066	2089	rBV	121343	219907	20.99%	2.349%
64	7.410	2119	2121	2125	rBV2	253	93	0.01%	0.001%
65	7.571	2157	2171	2192	rBV	429905	763656	72.88%	8.158%
66	7.853	2248	2259	2288	rBV	86347	151603	14.47%	1.620%
67	8.149	2348	2351	2353	rBV	134	91	0.01%	0.001%
68	8.169	2354	2357	2362	rVV	163	177	0.02%	0.002%
69	8.239	2373	2379	2382	rVB3	837	778	0.07%	0.008%
70	8.316	2391	2403	2439	rBV	427070	756625	72.21%	8.083%
71	8.583	2483	2486	2490	rBV	320	277	0.03%	0.003%

Data Path : W:\HPCHEM1\MSVOA U\DATA\VU052318\
 Data File : VU024048.D
 Acq On : 23 May 2018 20:11
 Operator : MD/SY
 Sample : J3088-18 50X
 Misc : 5.0mL/MSVOA U/WATER
 ALS Vial : 22 Sample Multiplier: 1

Integration Parameters: LSCINT.P

Integrator: RTE
 Smoothing : OFF Filtering: 5
 Sampling : 1 Min Area: 0 % of largest Peak
 Start Thrs: 0.2 Max Peaks: 100
 Stop Thrs : 0 Peak Location: TOP

If leading or trailing edge < 100 prefer < Baseline drop else tangent >
 Peak separation: 5

Method : W:\HPCHEM1\MSVOA_U\METHOD\SOMULM051218WMA.M
 Title : VOC Analysis

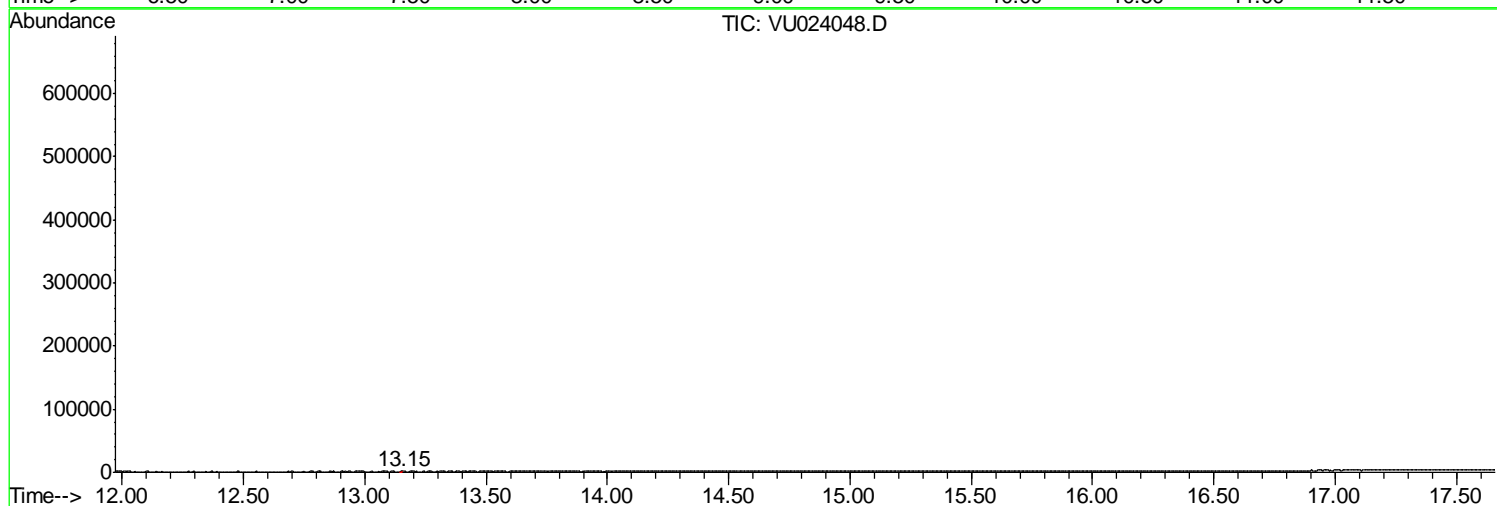
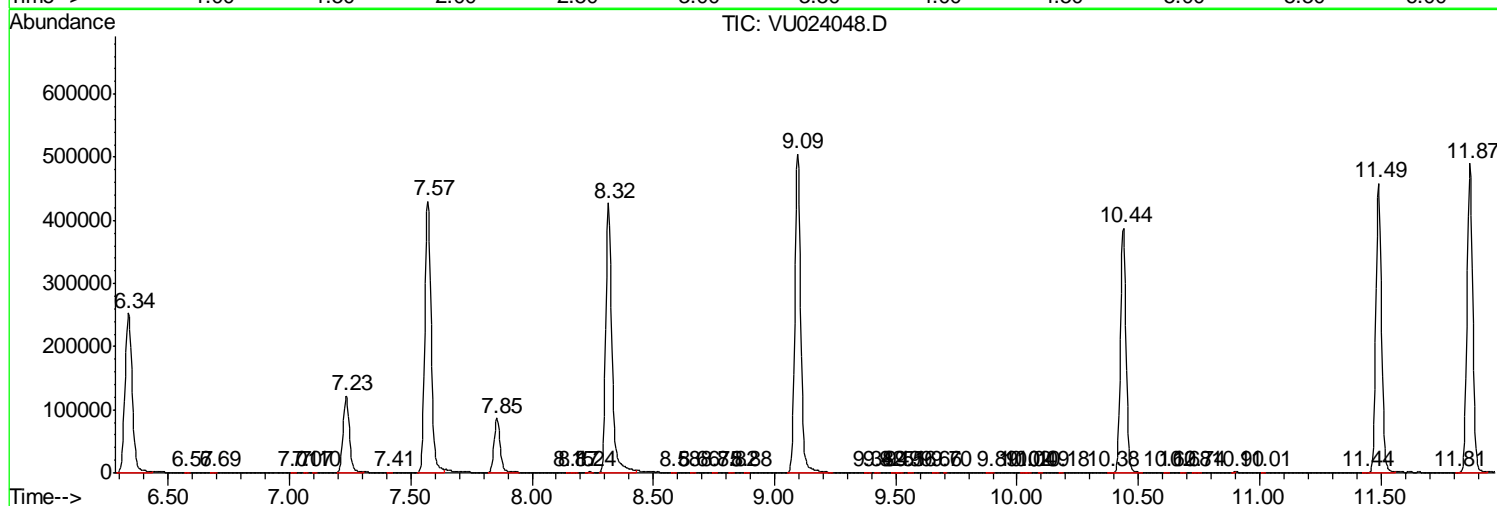
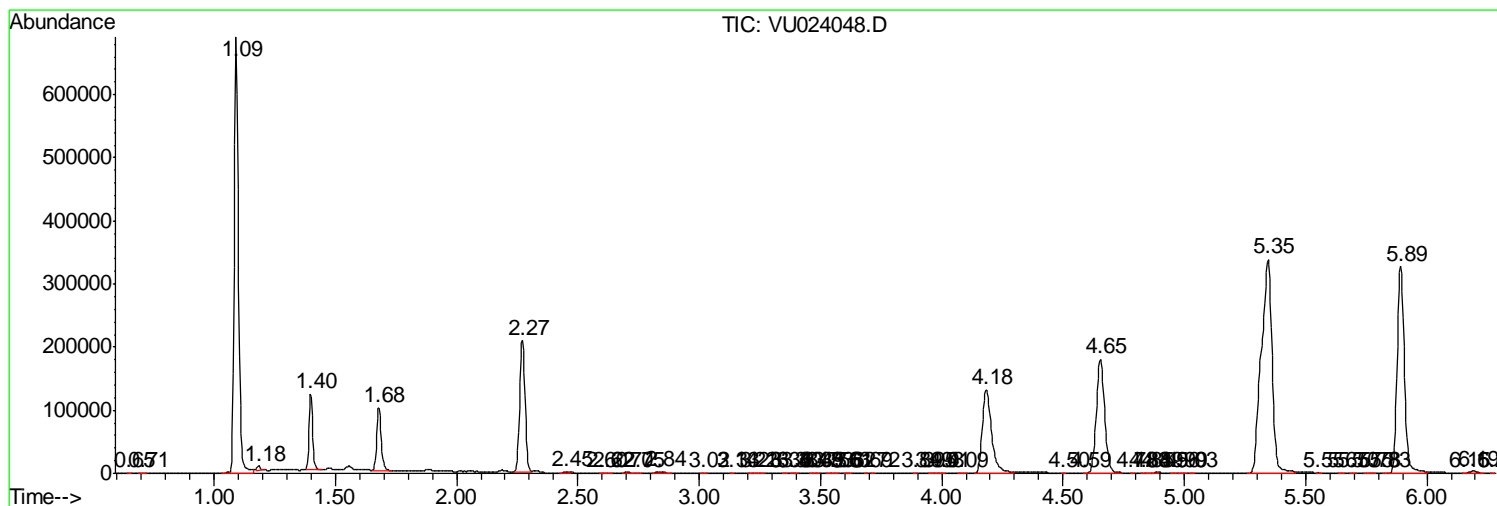
72	8.664	2508	2511	2514	rBV2	257	192	0.02%	0.002%
73	8.754	2536	2539	2541	rBV	167	99	0.01%	0.001%
74	8.824	2557	2561	2563	rBV2	201	192	0.02%	0.002%
75	8.882	2576	2579	2582	rBV2	153	95	0.01%	0.001%
76	9.095	2632	2645	2689	rBV	504594	857628	81.85%	9.162%
77	9.384	2730	2735	2739	rVB2	196	227	0.02%	0.002%
78	9.423	2744	2747	2750	rVB2	220	163	0.02%	0.002%
79	9.493	2765	2769	2772	rVV2	254	220	0.02%	0.002%
80	9.513	2772	2775	2780	rVB2	238	153	0.01%	0.002%
81	9.558	2786	2789	2793	rBV2	144	115	0.01%	0.001%
82	9.660	2817	2821	2825	rBV	205	242	0.02%	0.003%
83	9.702	2832	2834	2836	rBV	174	123	0.01%	0.001%
84	9.892	2886	2893	2896	rBV	350	514	0.05%	0.005%
85	10.024	2931	2934	2938	rVB2	244	197	0.02%	0.002%
86	10.043	2938	2940	2943	rBV2	167	131	0.01%	0.001%
87	10.095	2954	2956	2958	rBV2	155	98	0.01%	0.001%
88	10.178	2980	2982	2985	rBV	147	95	0.01%	0.001%
89	10.384	3043	3046	3050	rVB2	395	307	0.03%	0.003%
90	10.439	3050	3063	3086	rBV	387284	627928	59.93%	6.708%
91	10.615	3115	3118	3121	rBV	266	207	0.02%	0.002%
92	10.683	3136	3139	3143	rBV	216	182	0.02%	0.002%
93	10.738	3151	3156	3162	rBV2	346	480	0.05%	0.005%
94	10.895	3202	3205	3207	rBV	457	348	0.03%	0.004%
95	11.014	3239	3242	3245	rBV	217	178	0.02%	0.002%
96	11.435	3369	3373	3375	rBV3	228	181	0.02%	0.002%
97	11.490	3377	3390	3412	rVV	457909	733576	70.01%	7.837%
98	11.815	3488	3491	3493	rBV3	274	169	0.02%	0.002%
99	11.866	3494	3507	3530	rVV	489596	790902	75.48%	8.449%
100	13.149	3904	3906	3908	rBV2	296	142	0.01%	0.002%

Sum of corrected areas: 9360420

Data Path : W:\HPCHEM1\MSVOA U\DATA\VU052318\
 Data File : VU024048.D
 Acq On : 23 May 2018 20:11
 Operator : MD/SY
 Sample : J3088-18 50X
 Misc : 5.0mL/MSVOA U/WATER
 ALS Vial : 22 Sample Multiplier: 1

Quant Method : W:\HPCHEM1\MSVOA_U\METHOD\SOMULM051218WMA.M
 Quant Title : VOC Analysis

TIC Library : C:\DATABASE\NIST11.L
 TIC Integration Parameters: LSCINT.P



Data Path : W:\HPCHEM1\MSVOA_U\DATA\VU052318\
Data File : VU024048.D
Acq On : 23 May 2018 20:11
Operator : MD/SY
Sample : J3088-18 50X
Misc : 5.0mL/MSVOA_U/WATER
ALS Vial : 22 Sample Multiplier: 1

Quant Method : W:\HPCHEM1\MSVOA_U\METHOD\SOMULM051218WMA.M
Quant Title : VOC Analysis

TIC Library : C:\DATABASE\NIST11.L
TIC Integration Parameters: LSCINT.P

No Library Search Compounds Detected

Data Path : W:\HPCHEM1\MSVOA_U\DATA\VU052318\
Data File : VU024048.D
Acq On : 23 May 2018 20:11
Operator : MD/SY
Sample : J3088-18 50X
Misc : 5.0mL/MSVOA_U/WATER
ALS Vial : 22 Sample Multiplier: 1

Quant Method : W:\HPCHEM1\MSVOA_U\METHOD\SOMULM051218WMA.M
Quant Title : VOC Analysis

TIC Library : C:\DATABASE\NIST11.L
TIC Integration Parameters: LSCINT.P

TIC Top Hit name	RT	EstConc	Units	Response	--Internal Standard--			
					#	RT	Resp	Conc
