

Data Path : Z:\VOASRV\HPCHEM1\MSVOA U\DATA\VU052419\
 Data File : VU032297.D
 Acq On : 24 May 2019 08:40
 Operator : JC/SP
 Sample : K3001-15 50X
 Misc : 5.0mL/MSVOA U/WATER
 ALS Vial : 52 Sample Multiplier: 1

Instrument :
 MSVOA_U
 ClientSampled :
 E3YF8

Manual Integrations
APPROVED
 apatel
 6/4/2019 8:33:35 AM

Quant Time: May 28 11:24:10 2019
 Quant Method : Z:\VOASRV\HPCHEM1\MSVOA_U\METHOD\SOMULM052419WMA.M
 Quant Title : VOC Analysis
 QLast Update : Fri May 24 07:24:18 2019
 Response via : Initial Calibration

Internal Standards	R.T.	QIon	Response	Conc	Units	Dev(Min)
1) 1,4-Difluorobenzene	5.88	114	700400	50.00	ug/L	0.00
28) Chlorobenzene-d5	9.09	117	703441	50.00	ug/L	0.00
60) 1,4-Dichlorobenzene-d4	11.48	152	282668	50.00	ug/L	0.00

System Monitoring Compounds

4) Vinyl Chloride-d3	1.40	65	226177	61.78	ug/L	0.00
Spiked Amount	50.000	Range	60 - 135	Recovery	=	123.56%
7) Chloroethane-d5	1.67	69	209185	59.54	ug/L	0.00
Spiked Amount	50.000	Range	70 - 130	Recovery	=	119.08%
11) 1,1-Dichloroethene-d2	2.27	63	310389	42.75	ug/L	0.00
Spiked Amount	50.000	Range	60 - 125	Recovery	=	85.50%
21) 2-Butanone-d5	4.17	46	374644	107.26	ug/L	0.00
Spiked Amount	100.000	Range	40 - 130	Recovery	=	107.26%
24) Chloroform-d	4.64	84	464807	49.80	ug/L	0.00
Spiked Amount	50.000	Range	70 - 125	Recovery	=	99.60%
26) 1,2-Dichloroethane-d4	5.30	65	300026	51.18	ug/L	0.00
Spiked Amount	50.000	Range	70 - 125	Recovery	=	102.36%
32) Benzene-d6	5.33	84	959196	53.55	ug/L	0.00
Spiked Amount	50.000	Range	70 - 125	Recovery	=	107.10%
36) 1,2-Dichloropropane-d6	6.32	67	295428	51.82	ug/L	0.00
Spiked Amount	50.000	Range	70 - 120	Recovery	=	103.64%
41) Toluene-d8	7.56	98	816238	49.78	ug/L	0.00
Spiked Amount	50.000	Range	80 - 120	Recovery	=	99.56%
43) trans-1,3-Dichloropropene-	7.85	79	126469	48.24	ug/L	0.00
Spiked Amount	50.000	Range	60 - 125	Recovery	=	96.48%
47) 2-Hexanone-d5	8.31	63	259140	108.10	ug/L	0.00
Spiked Amount	100.000	Range	45 - 130	Recovery	=	108.10%
57) 1,1,2,2-Tetrachloroethane-	10.43	84	454001	47.67	ug/L	0.00
Spiked Amount	50.000	Range	65 - 120	Recovery	=	95.34%
64) 1,2-Dichlorobenzene-d4	11.85	152	319518	53.79	ug/L	0.00
Spiked Amount	50.000	Range	80 - 120	Recovery	=	107.58%

Target Compounds

Target Compounds	R.T.	QIon	Response	Conc	Units	Ovalue
13) Acetone	2.32	43	5563	1.976	ug/L	88
42) Toluene	7.62	91	20705464m	977.247	ug/L	
52) Ethylbenzene	9.25	91	188180	8.739	ug/L	99
53) m,p-Xylene	9.37	106	105148	12.651	ug/L	99
54) o-xylene	9.78	106	13176	1.520	ug/L	92

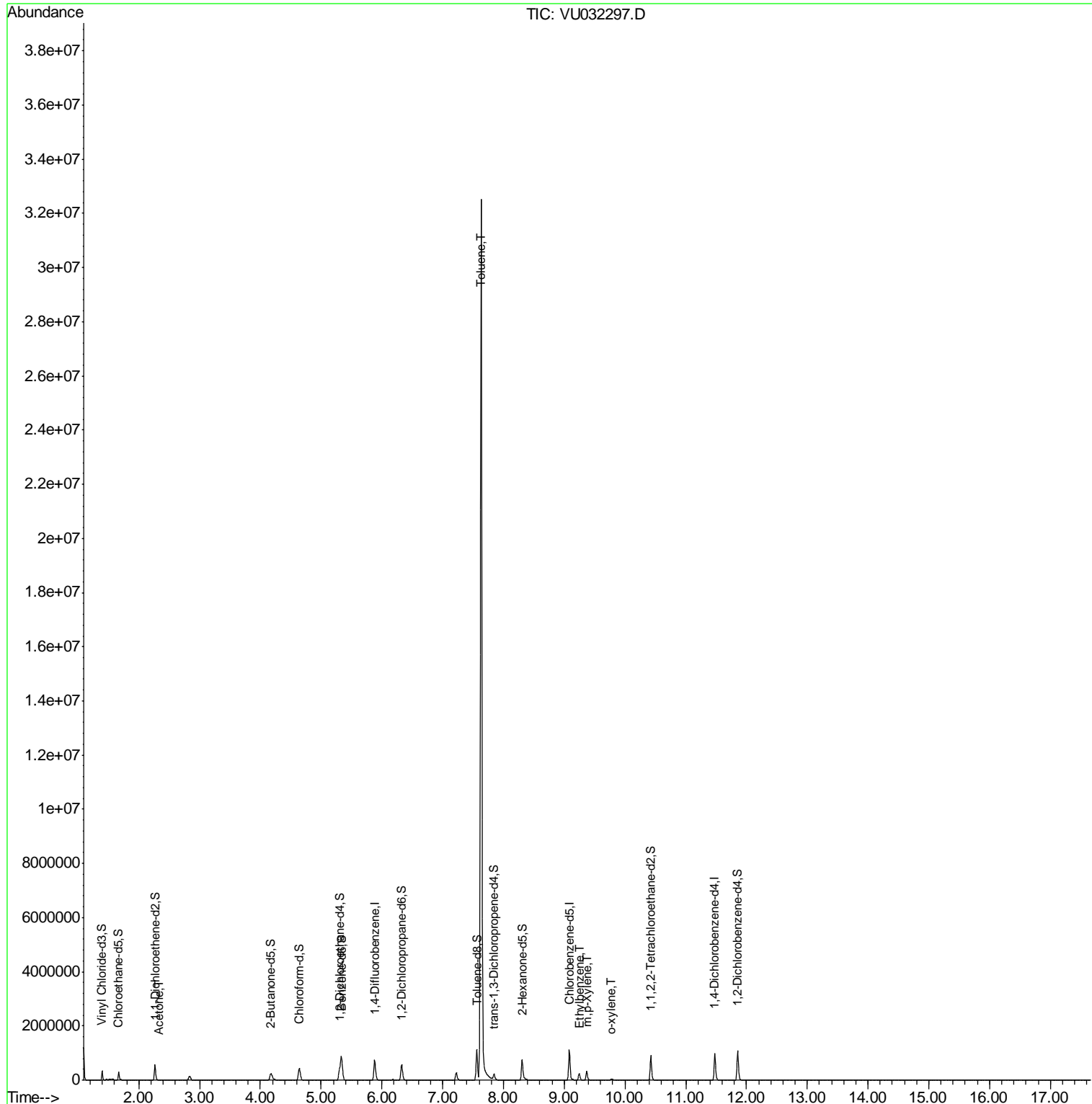
(#) = qualifier out of range (m) = manual integration (+) = signals summed

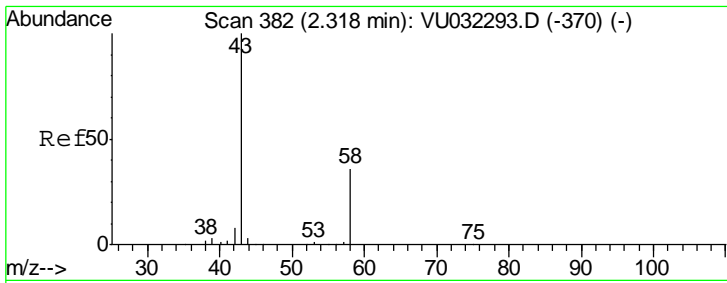
Data Path : Z:\VOASRV\HPCHEM1\MSVOA U\DATA\VU052419\
 Data File : VU032297.D
 Acq On : 24 May 2019 08:40
 Operator : JC/SP
 Sample : K3001-15 50X
 Misc : 5.0mL/MSVOA U/WATER
 ALS Vial : 52 Sample Multiplier: 1

Instrument :
 MSVOA_U
Client Sampled :
 E3YF8

Manual Integrations
APPROVED
 apatel
 6/4/2019 8:33:35 AM

Quant Time: May 28 11:24:10 2019
 Quant Method : Z:\VOASRV\HPCHEM1\MSVOA_U\METHOD\SOMULM052419WMA.M
 Quant Title : VOC Analysis
 QLast Update : Fri May 24 07:24:18 2019
 Response via : Initial Calibration





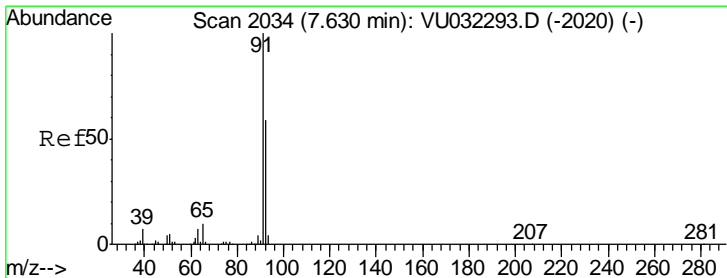
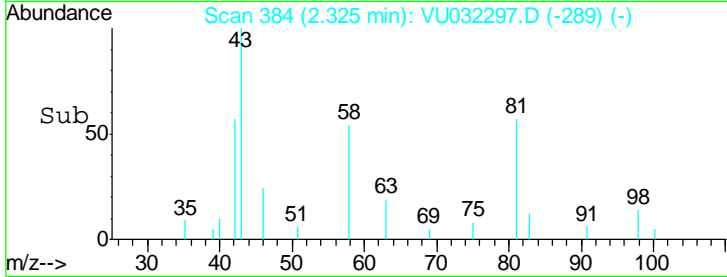
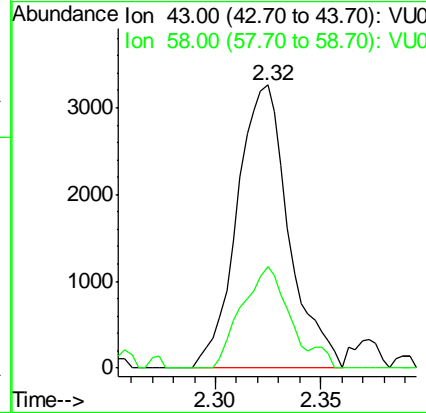
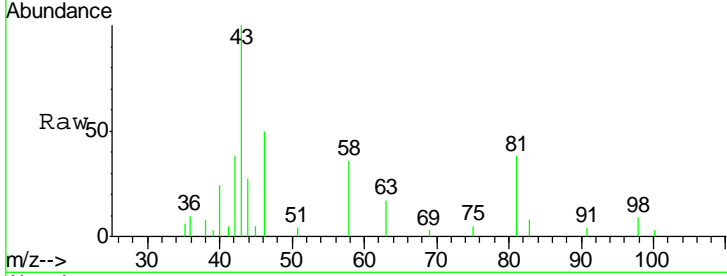
#13
 Acetone
 Concen: 1.976 ug/L
 RT: 2.32 min Scan# 384
 Delta R.T. 0.01 min
 Lab File: VU032297.D
 Acq: 24 May 2019 08:40

Instrument :
 MSVOA_U
ClientSampled :
 E3YF8

Tgt Ion	Ratio	Lower	Upper
43	100		
58	31.6	0.0	77.2

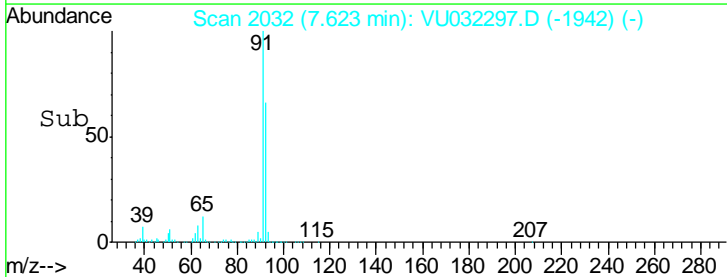
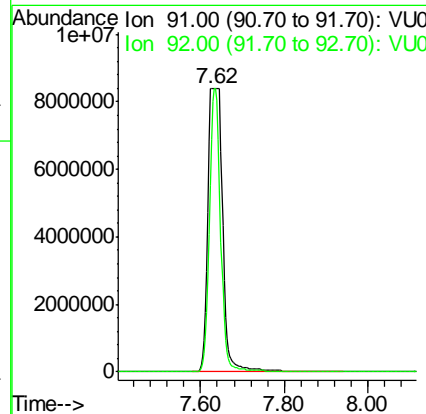
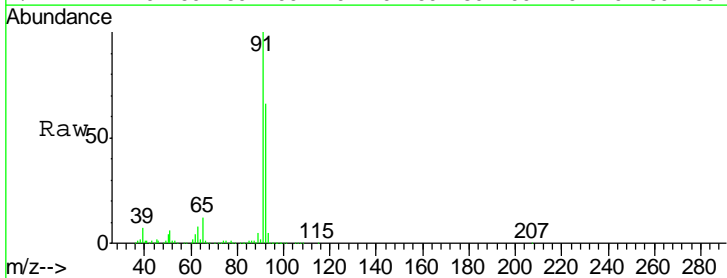
Manual Integrations
APPROVED

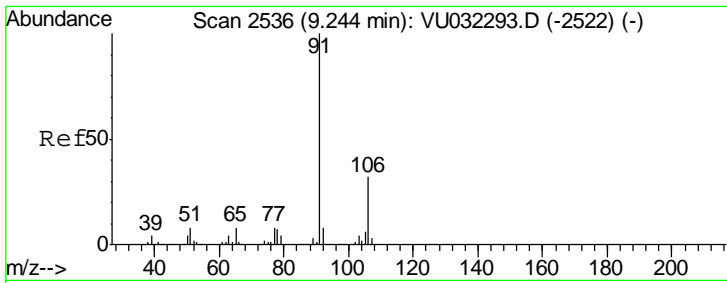
apatel
 6/4/2019 8:33:35 AM



#42
 Toluene
 Concen: 977.247 ug/L m
 RT: 7.62 min Scan# 2032
 Delta R.T. -0.01 min
 Lab File: VU032297.D
 Acq: 24 May 2019 08:40

Tgt Ion	Ratio	Lower	Upper
91	100		
92	65.7	40.3	74.9





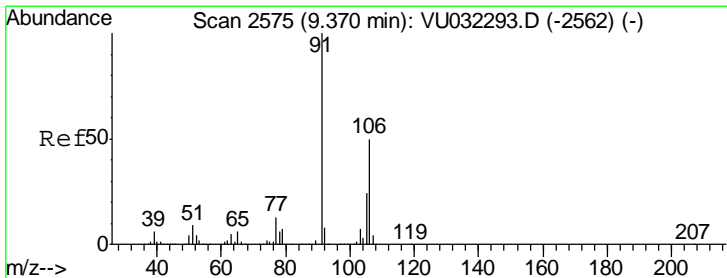
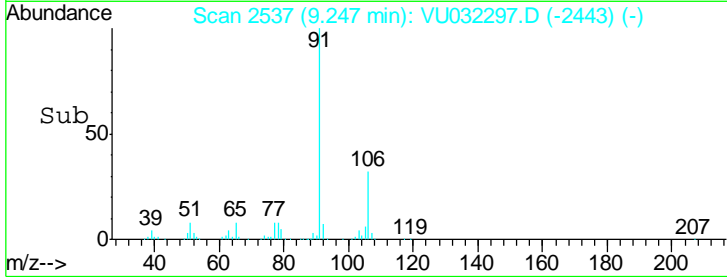
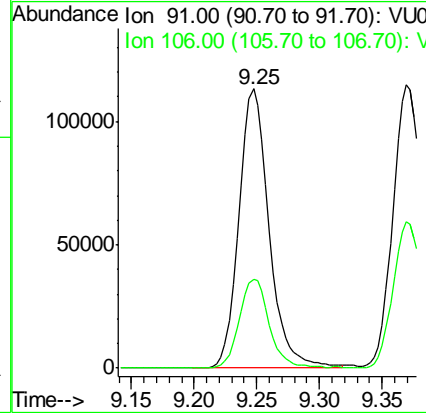
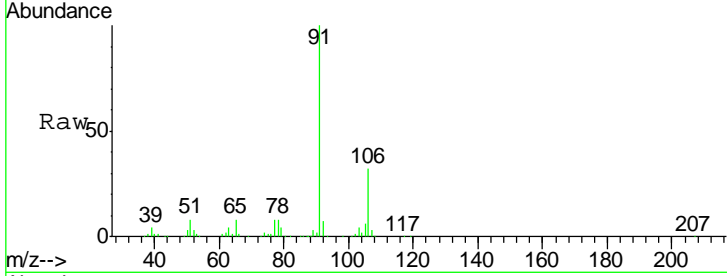
#52
Ethylbenzene
Concen: 8.739 ug/L
RT: 9.25 min Scan# 2537
Delta R.T. 0.00 min
Lab File: VU032297.D
Acq: 24 May 2019 08:40

Instrument : MSVOA_U
Client Sampled : E3YF8

Tgt Ion	Resp	Lower	Upper
91	100		
106	32.0	22.0	41.0

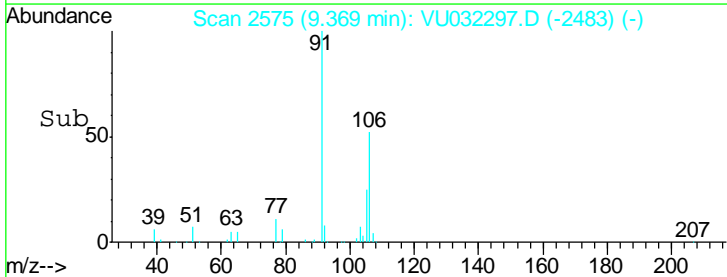
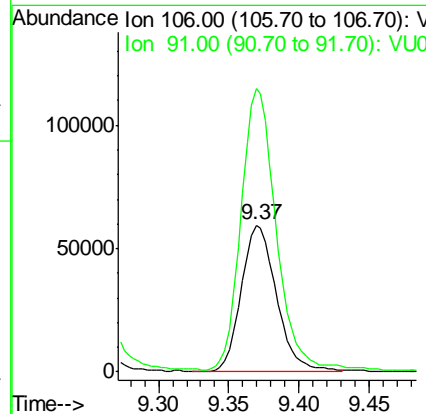
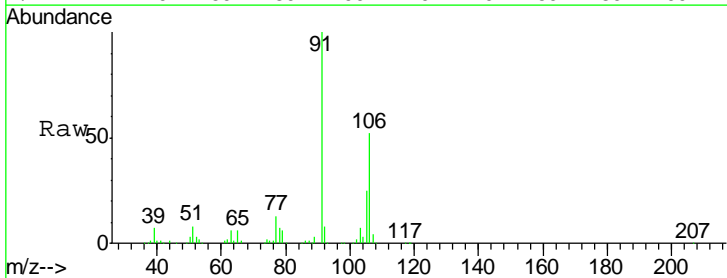
Manual Integrations
APPROVED

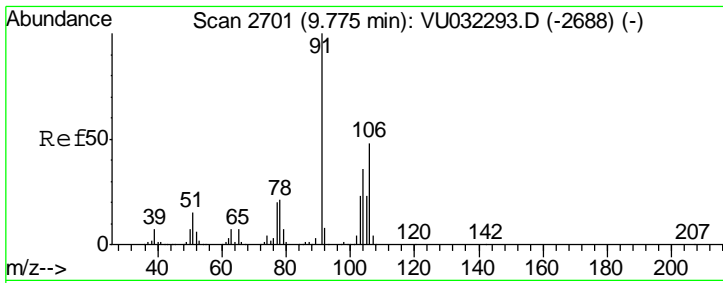
apatel
6/4/2019 8:33:35 AM



#53
m,p-Xylene
Concen: 12.651 ug/L
RT: 9.37 min Scan# 2575
Delta R.T. -0.00 min
Lab File: VU032297.D
Acq: 24 May 2019 08:40

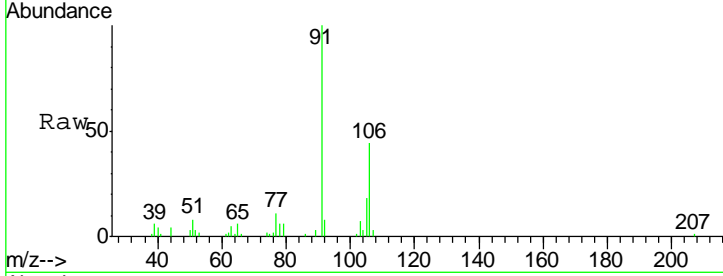
Tgt Ion	Resp	Lower	Upper
106	100		
91	193.0	136.5	253.5





#54
 o-xylene
 Concen: 1.520 ug/L
 RT: 9.78 min Scan# 2702
 Delta R.T. 0.00 min
 Lab File: VU032297.D
 Acq: 24 May 2019 08:40

Instrument :
 MSVOA_U
ClientSampled :
 E3YF8



Tot Ion	Ratio	Lower	Upper
106	100		
91	227.9	150.3	279.1

Manual Integrations
APPROVED
 apatel
 6/4/2019 8:33:35 AM

