

Data Path : W:\HPCHEM1\MSVOA U\DATA\VU052718\
 Data File : VU024196.D
 Acq On : 27 May 2018 18:23
 Operator : MD/SY
 Sample : J3092-15 50X
 Misc : 5.0mL/MSVOA U/WATER
 ALS Vial : 16 Sample Multiplier: 1

Integration Parameters: LSCINT.P

Integrator: RTE
 Smoothing : OFF Filtering: 5
 Sampling : 1 Min Area: 0 % of largest Peak
 Start Thrs: 0.2 Max Peaks: 100
 Stop Thrs : 0 Peak Location: TOP

If leading or trailing edge < 100 prefer < Baseline drop else tangent >
 Peak separation: 5

Method : W:\HPCHEM1\MSVOA_U\METHOD\SOMULM052518WMA.M
 Title : VOC Analysis

Signal : TIC

peak #	R.T. min	first scan	max scan	last scan	PK TY	peak height	corr. area	corr. % max.	% of total
1	0.667	21	24	27	rBV2	246	183	0.02%	0.002%
2	0.754	48	51	56	rVB2	171	154	0.01%	0.002%
3	0.847	77	80	83	rVB	258	197	0.02%	0.002%
4	0.915	99	101	107	rVB2	174	132	0.01%	0.001%
5	0.950	107	112	115	rBV2	186	160	0.01%	0.002%
6	0.969	115	118	122	rBV	172	186	0.02%	0.002%
7	1.088	136	155	178	rBV	404038	495743	43.16%	5.028%
8	1.294	215	219	227	rVB2	7321	7866	0.68%	0.080%
9	1.400	245	252	265	rBV	164791	172627	15.03%	1.751%
10	1.677	330	338	357	rVB	119537	159766	13.91%	1.620%
11	1.886	396	403	412	rBV2	12450	16629	1.45%	0.169%
12	2.272	512	523	540	rBV	252410	391813	34.11%	3.974%
13	2.429	567	572	573	rBV	311	264	0.02%	0.003%
14	2.445	573	577	585	rVV3	797	1054	0.09%	0.011%
15	2.583	617	620	623	rBV2	253	187	0.02%	0.002%
16	2.606	623	627	628	rBV	376	226	0.02%	0.002%
17	2.686	650	652	653	rVV	358	179	0.02%	0.002%
18	2.706	654	658	662	rVV3	889	885	0.08%	0.009%
19	2.722	662	663	667	rVV2	206	128	0.01%	0.001%
20	2.744	667	670	676	rVB	236	167	0.01%	0.002%
21	2.837	688	699	715	rVB	2249	4937	0.43%	0.050%
22	2.905	718	720	724	rVV2	180	132	0.01%	0.001%
23	2.927	724	727	733	rVB	239	189	0.02%	0.002%
24	2.969	738	740	746	rVB2	152	133	0.01%	0.001%
25	3.159	797	799	803	rVB2	231	146	0.01%	0.001%
26	3.390	866	871	875	rVV2	234	272	0.02%	0.003%
27	3.426	880	882	890	rVB	249	187	0.02%	0.002%
28	3.738	976	979	984	rBV2	230	178	0.02%	0.002%
29	4.014	1061	1065	1069	rVB	202	187	0.02%	0.002%
30	4.178	1100	1116	1146	rBV	101194	265438	23.11%	2.692%
31	4.651	1245	1263	1288	rVV	183403	436414	37.99%	4.426%
32	4.895	1331	1339	1342	rBV3	478	688	0.06%	0.007%
33	4.937	1348	1352	1358	rVB2	255	229	0.02%	0.002%
34	5.005	1370	1373	1377	rVB2	287	190	0.02%	0.002%

Data Path : W:\HPCHEM1\MSVOA U\DATA\VU052718\
 Data File : VU024196.D
 Acq On : 27 May 2018 18:23
 Operator : MD/SY
 Sample : J3092-15 50X
 Misc : 5.0mL/MSVOA U/WATER
 ALS Vial : 16 Sample Multiplier: 1

Integration Parameters: LSCINT.P

Integrator: RTE
 Smoothing : OFF Filtering: 5
 Sampling : 1 Min Area: 0 % of largest Peak
 Start Thrs: 0.2 Max Peaks: 100
 Stop Thrs : 0 Peak Location: TOP

If leading or trailing edge < 100 prefer < Baseline drop else tangent >
 Peak separation: 5

Method : W:\HPCHEM1\MSVOA_U\METHOD\SOMULM052518WMA.M
 Title : VOC Analysis

35	5.127	1406	1411	1414	rBV	224	145	0.01%	0.001%
36	5.175	1422	1426	1429	rBV	660	638	0.06%	0.006%
37	5.345	1454	1479	1513	rBV2	371525	1136630	98.96%	11.527%
38	5.677	1578	1582	1585	rVV2	333	289	0.03%	0.003%
39	5.757	1602	1607	1614	rVB3	238	307	0.03%	0.003%
40	5.892	1633	1649	1686	rBV	333104	686371	59.76%	6.961%
41	6.191	1727	1742	1772	rBV	575404	1148611	100.00%	11.649%
42	6.336	1774	1787	1813	rVB	252415	513745	44.73%	5.210%
43	6.500	1836	1838	1848	rVB4	633	598	0.05%	0.006%
44	6.548	1848	1853	1856	rBV2	178	183	0.02%	0.002%
45	6.863	1948	1951	1953	rBV2	301	209	0.02%	0.002%
46	6.886	1956	1958	1962	rVB2	277	179	0.02%	0.002%
47	7.027	1997	2002	2004	rVV2	133	138	0.01%	0.001%
48	7.062	2010	2013	2017	rVB2	180	131	0.01%	0.001%
49	7.233	2053	2066	2095	rBV	119253	219948	19.15%	2.231%
50	7.400	2116	2118	2124	rVB3	633	472	0.04%	0.005%
51	7.429	2124	2127	2129	rBV	266	199	0.02%	0.002%
52	7.458	2134	2136	2138	rVB	342	131	0.01%	0.001%
53	7.570	2155	2171	2206	rBV	474443	855686	74.50%	8.678%
54	7.853	2248	2259	2289	rBV2	81725	140454	12.23%	1.424%
55	8.066	2317	2325	2329	rBV2	290	436	0.04%	0.004%
56	8.233	2366	2377	2390	rBV2	51424	87922	7.65%	0.892%
57	8.313	2391	2402	2431	rBV	316169	546246	47.56%	5.540%
58	8.529	2467	2469	2471	rBV	216	135	0.01%	0.001%
59	8.590	2486	2488	2493	rVB	314	233	0.02%	0.002%
60	8.619	2494	2497	2500	rVV2	374	258	0.02%	0.003%
61	8.670	2509	2513	2516	rVV2	189	178	0.02%	0.002%
62	8.715	2524	2527	2530	rVB2	229	174	0.02%	0.002%
63	8.808	2553	2556	2560	rVV2	175	135	0.01%	0.001%
64	8.853	2566	2570	2576	rBV2	270	235	0.02%	0.002%
65	8.911	2584	2588	2591	rBV	223	207	0.02%	0.002%
66	8.959	2600	2603	2608	rVB	222	141	0.01%	0.001%
67	8.992	2608	2613	2617	rBV2	311	297	0.03%	0.003%
68	9.094	2632	2645	2688	rBV	470884	805150	70.10%	8.165%
69	9.249	2691	2693	2695	rVB2	434	177	0.02%	0.002%
70	9.358	2723	2727	2732	rBV2	311	297	0.03%	0.003%
71	9.387	2733	2736	2739	rVV2	242	141	0.01%	0.001%

Data Path : W:\HPCHEM1\MSVOA U\DATA\VU052718\
 Data File : VU024196.D
 Acq On : 27 May 2018 18:23
 Operator : MD/SY
 Sample : J3092-15 50X
 Misc : 5.0mL/MSVOA U/WATER
 ALS Vial : 16 Sample Multiplier: 1

Integration Parameters: LSCINT.P

Integrator: RTE
 Smoothing : OFF Filtering: 5
 Sampling : 1 Min Area: 0 % of largest Peak
 Start Thrs: 0.2 Max Peaks: 100
 Stop Thrs : 0 Peak Location: TOP

If leading or trailing edge < 100 prefer < Baseline drop else tangent >
 Peak separation: 5

Method : W:\HPCHEM1\MSVOA_U\METHOD\SOMULM052518WMA.M
 Title : VOC Analysis

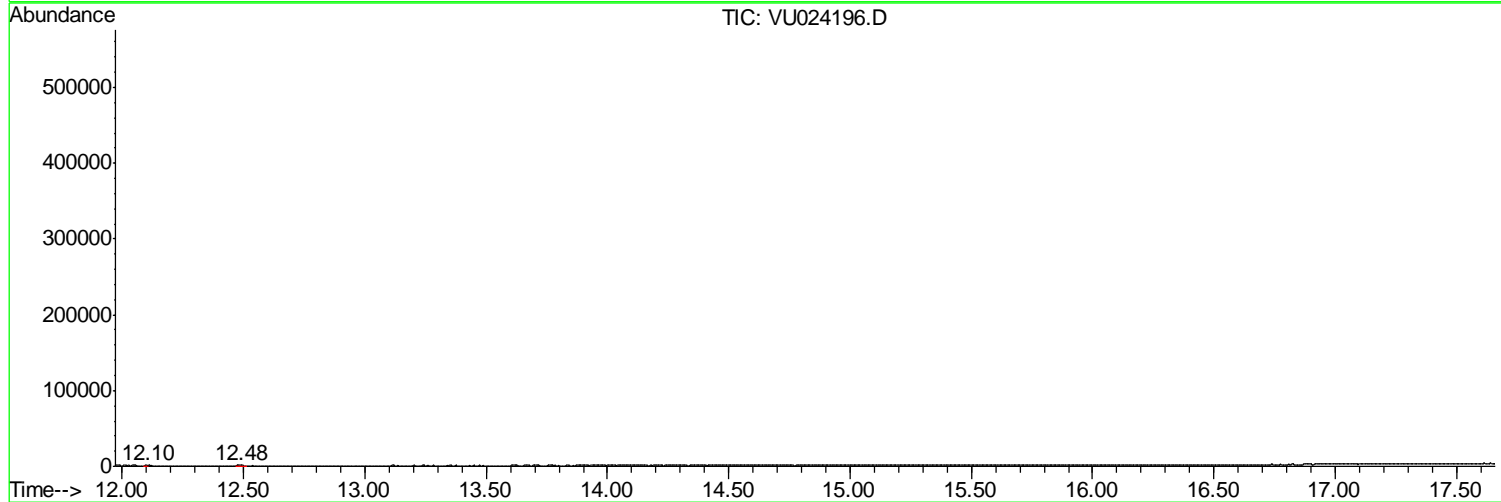
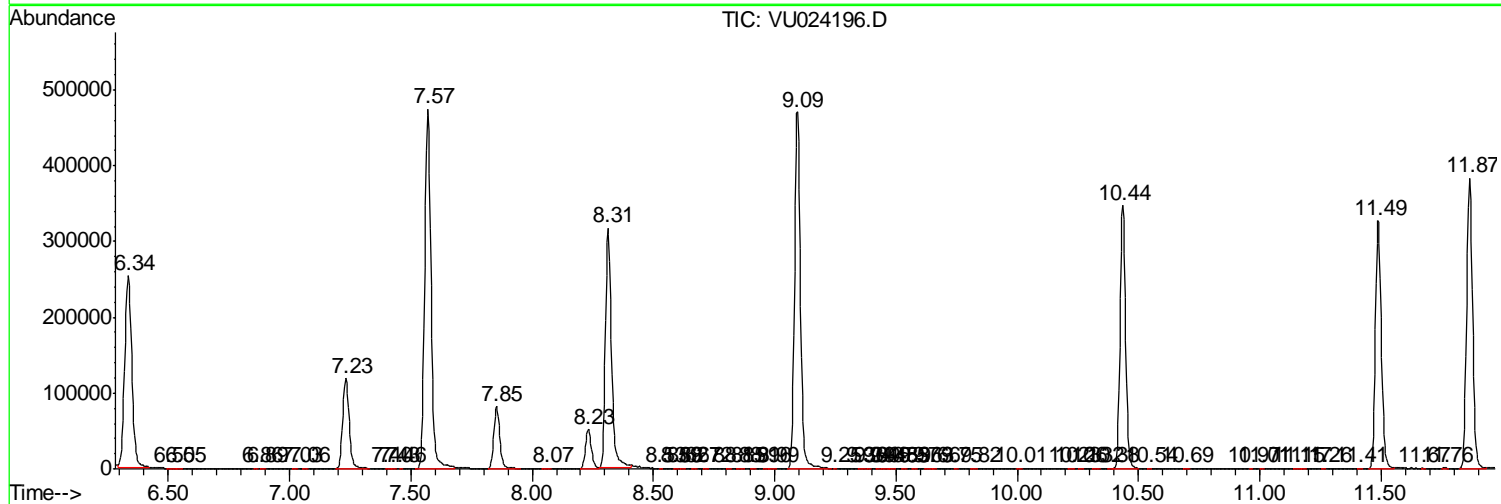
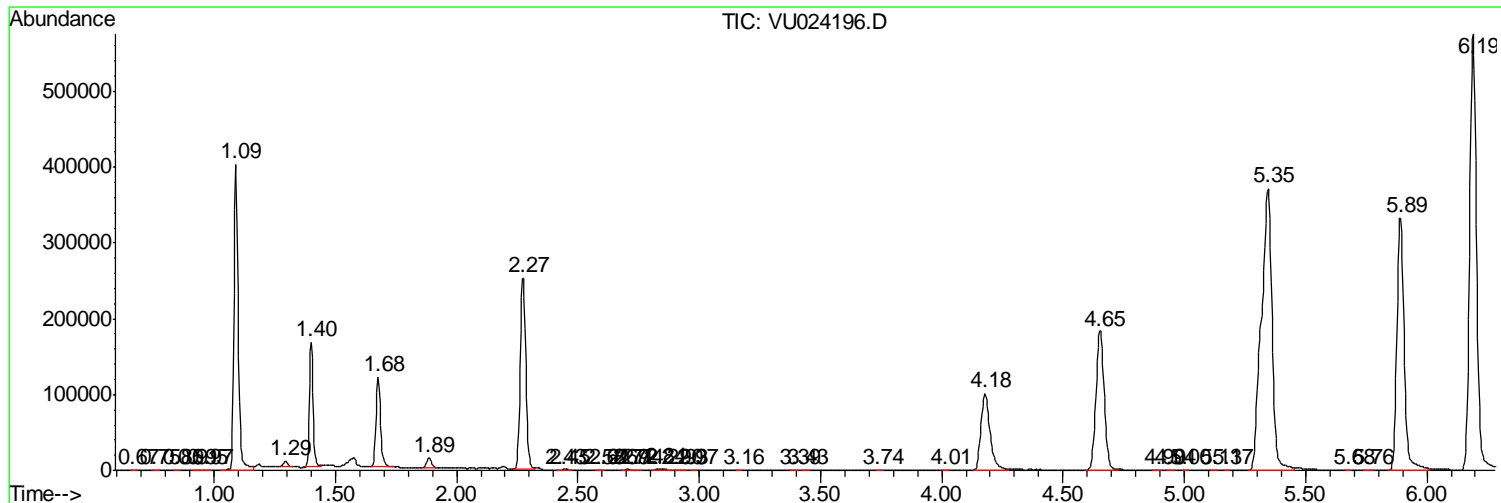
72	9.426	2745	2748	2750	rBV	263	157	0.01%	0.002%
73	9.451	2752	2756	2762	rVV2	330	368	0.03%	0.004%
74	9.480	2762	2765	2770	rVB2	198	157	0.01%	0.002%
75	9.532	2778	2781	2785	rVB	228	135	0.01%	0.001%
76	9.570	2792	2793	2798	rVV	163	141	0.01%	0.001%
77	9.631	2808	2812	2817	rBV2	238	203	0.02%	0.002%
78	9.657	2817	2820	2823	rVB	297	181	0.02%	0.002%
79	9.747	2845	2848	2850	rBV2	233	149	0.01%	0.002%
80	9.824	2867	2872	2875	rBV2	192	254	0.02%	0.003%
81	10.008	2925	2929	2933	rBV2	244	273	0.02%	0.003%
82	10.226	2992	2997	2999	rBV	224	195	0.02%	0.002%
83	10.255	3005	3006	3011	rVB	182	135	0.01%	0.001%
84	10.323	3023	3027	3033	rVB3	481	356	0.03%	0.004%
85	10.384	3043	3046	3049	rBV2	245	196	0.02%	0.002%
86	10.435	3049	3062	3082	rVV	347004	554709	48.29%	5.626%
87	10.541	3093	3095	3098	rBV	302	186	0.02%	0.002%
88	10.692	3139	3142	3147	rBB	204	162	0.01%	0.002%
89	10.966	3224	3227	3228	rBV	226	139	0.01%	0.001%
90	11.008	3237	3240	3243	rBV	266	209	0.02%	0.002%
91	11.152	3280	3285	3290	rVB2	269	279	0.02%	0.003%
92	11.175	3290	3292	3297	rBV2	242	211	0.02%	0.002%
93	11.262	3316	3319	3322	rVB	262	145	0.01%	0.001%
94	11.409	3362	3365	3369	rVB	218	133	0.01%	0.001%
95	11.487	3377	3389	3410	rBV	326291	548846	47.78%	5.566%
96	11.670	3444	3446	3449	rVB2	440	235	0.02%	0.002%
97	11.763	3471	3475	3479	rBV2	496	484	0.04%	0.005%
98	11.866	3493	3507	3528	rBV	383560	645183	56.17%	6.543%
99	12.098	3575	3579	3581	rBV	456	392	0.03%	0.004%
100	12.480	3694	3698	3707	rVB4	722	1064	0.09%	0.011%

Sum of corrected areas: 9860569

Data Path : W:\HPCHEM1\MSVOA U\DATA\VU052718\
 Data File : VU024196.D
 Acq On : 27 May 2018 18:23
 Operator : MD/SY
 Sample : J3092-15 50X
 Misc : 5.0mL/MSVOA U/WATER
 ALS Vial : 16 Sample Multiplier: 1

Quant Method : W:\HPCHEM1\MSVOA_U\METHOD\SOMULM052518WMA.M
 Quant Title : VOC Analysis

TIC Library : C:\DATABASE\NIST11.L
 TIC Integration Parameters: LSCINT.P



Data Path : W:\HPCHEM1\MSVOA_U\DATA\VU052718\
Data File : VU024196.D
Acq On : 27 May 2018 18:23
Operator : MD/SY
Sample : J3092-15 50X
Misc : 5.0mL/MSVOA_U/WATER
ALS Vial : 16 Sample Multiplier: 1

Quant Method : W:\HPCHEM1\MSVOA_U\METHOD\SOMULM052518WMA.M
Quant Title : VOC Analysis

TIC Library : C:\DATABASE\NIST11.L
TIC Integration Parameters: LSCINT.P

No Library Search Compounds Detected

Data Path : W:\HPCHEM1\MSVOA_U\DATA\VU052718\
Data File : VU024196.D
Acq On : 27 May 2018 18:23
Operator : MD/SY
Sample : J3092-15 50X
Misc : 5.0mL/MSVOA_U/WATER
ALS Vial : 16 Sample Multiplier: 1

Quant Method : W:\HPCHEM1\MSVOA_U\METHOD\SOMULM052518WMA.M
Quant Title : VOC Analysis

TIC Library : C:\DATABASE\NIST11.L
TIC Integration Parameters: LSCINT.P

TIC Top Hit name	RT	EstConc	Units	Response	--Internal Standard--			
					#	RT	Resp	Conc
