

Data Path : Z:\VOASRV\HPCHEM1\MSVOA U\DATA\VU052720\
 Data File : VU038312.D
 Acq On : 27 May 2020 11:55
 Operator : JC/MD
 Sample : L2766-01
 Misc : 25.0mL/MSVOA U/WATER
 ALS Vial : 1 Sample Multiplier: 1

Instrument :
 MSVOA_U
 ClientSampleId :
 BE4Y5

Quant Time: May 28 04:35:32 2020
 Quant Method : Z:\VOASRV\HPCHEM1\MSVOA_U\METHOD\SOMUTR050720WMA.M
 Quant Title : TRACE VOA SOM01.0
 QLast Update : Thu May 28 04:16:01 2020
 Response via : Initial Calibration

Internal Standards	R.T.	QIon	Response	Conc	Units	Dev(Min)
1) 1,4-Difluorobenzene	6.28	114	331954	5.00	ug/L	0.00
28) Chlorobenzene-d5	9.44	117	322033	5.00	ug/L	0.00
60) 1,4-Dichlorobenzene-d4	11.83	152	157380	5.00	ug/L	0.00

System Monitoring Compounds

4) Vinyl Chloride-d3	1.61	65	90881	2.99	ug/L	0.00
Spiked Amount	5.000	Range	40 - 130	Recovery	=	59.80%
7) Chloroethane-d5	1.93	69	85227	3.25	ug/L	0.00
Spiked Amount	5.000	Range	65 - 130	Recovery	=	65.00%
11) 1,1-Dichloroethene-d2	2.59	63	142083	2.80	ug/L	0.00
Spiked Amount	5.000	Range	60 - 125	Recovery	=	56.00%#
20) 2-Butanone-d5	4.66	46	358036	47.79	ug/L	0.00
Spiked Amount	50.000	Range	40 - 130	Recovery	=	95.58%
24) Chloroform-d	5.10	84	197353	4.28	ug/L	0.00
Spiked Amount	5.000	Range	70 - 125	Recovery	=	85.60%
26) 1,2-Dichloroethane-d4	5.74	65	118544	4.49	ug/L	0.00
Spiked Amount	5.000	Range	70 - 130	Recovery	=	89.80%
32) Benzene-d6	5.76	84	416276	4.31	ug/L	0.00
Spiked Amount	5.000	Range	70 - 125	Recovery	=	86.20%
36) 1,2-Dichloropropane-d6	6.72	67	131364	4.22	ug/L	0.00
Spiked Amount	5.000	Range	60 - 140	Recovery	=	84.40%
41) Toluene-d8	7.92	98	373118	4.30	ug/L	0.00
Spiked Amount	5.000	Range	70 - 130	Recovery	=	86.00%
43) trans-1,3-Dichloropropene-	8.20	79	52088	4.18	ug/L	0.00
Spiked Amount	5.000	Range	55 - 130	Recovery	=	83.60%
46) 2-Hexanone-d5	8.66	63	289655	49.17	ug/L	0.00
Spiked Amount	50.000	Range	45 - 130	Recovery	=	98.34%
57) 1,1,2,2-Tetrachloroethane-	10.77	84	111867	4.55	ug/L	0.00
Spiked Amount	5.000	Range	65 - 120	Recovery	=	91.00%
64) 1,2-Dichlorobenzene-d4	12.21	152	145853	4.76	ug/L	0.00
Spiked Amount	5.000	Range	80 - 120	Recovery	=	95.20%

Target Compounds

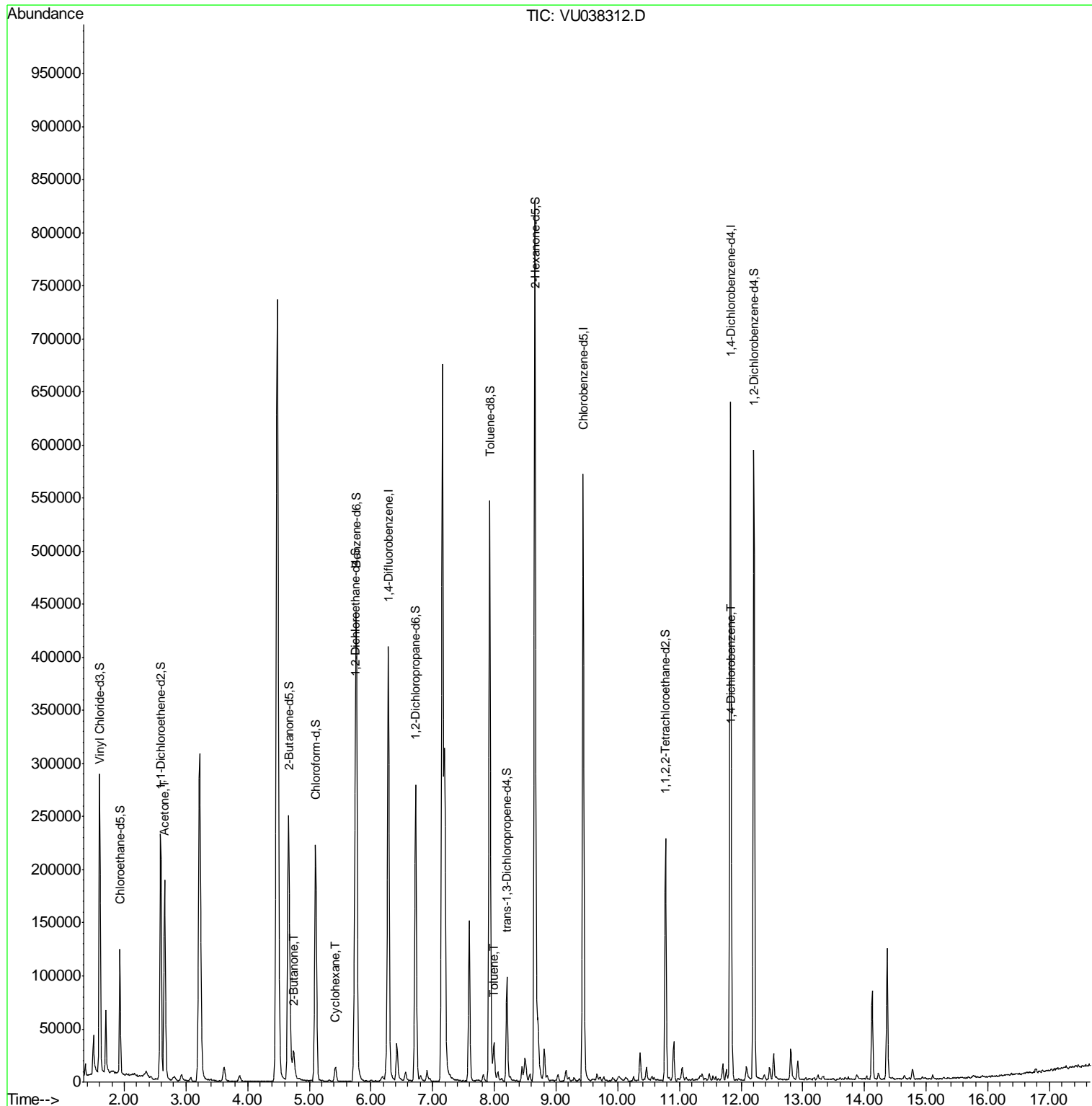
Target Compounds	R.T.	QIon	Response	Conc	Units	Ovalue
13) Acetone	2.66	43	216304	46.021	ug/L	99
21) 2-Butanone	4.75	43	34270	4.131	ug/L	95
30) Cyclohexane	5.42	56	6923	0.159	ug/L	98
42) Toluene	8.00	91	22813	0.210	ug/L	100
63) 1,4-Dichlorobenzene	11.85	146	13127	0.253	ug/L	99

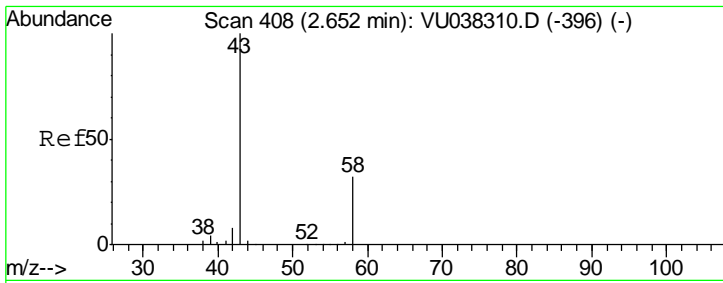
(#) = qualifier out of range (m) = manual integration (+) = signals summed

Data Path : Z:\VOASRV\HPCHEM1\MSVOA U\DATA\VU052720\
 Data File : VU038312.D
 Acq On : 27 May 2020 11:55
 Operator : JC/MD
 Sample : L2766-01
 Misc : 25.0mL/MSVOA U/WATER
 ALS Vial : 1 Sample Multiplier: 1

Instrument :
 MSVOA_U
 ClientSampleId :
 BE4Y5

Quant Time: May 28 04:35:32 2020
 Quant Method : Z:\VOASRV\HPCHEM1\MSVOA_U\METHOD\SOMUTR050720WMA.M
 Quant Title : TRACE VOA SOM01.0
 QLast Update : Thu May 28 04:16:01 2020
 Response via : Initial Calibration

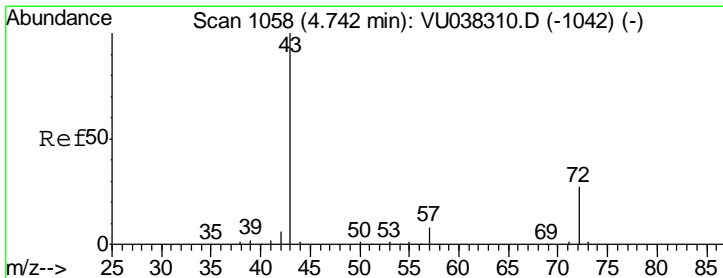
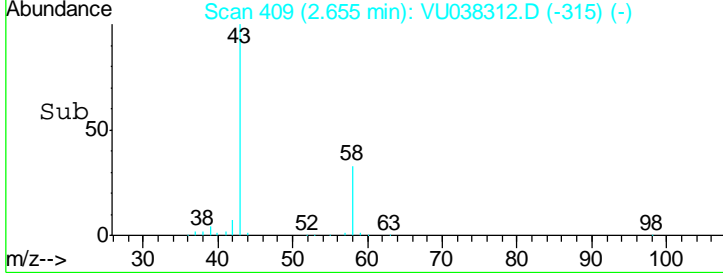
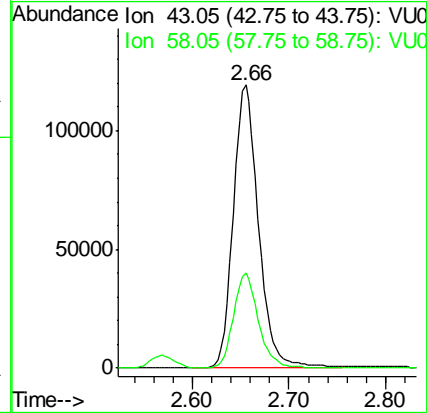
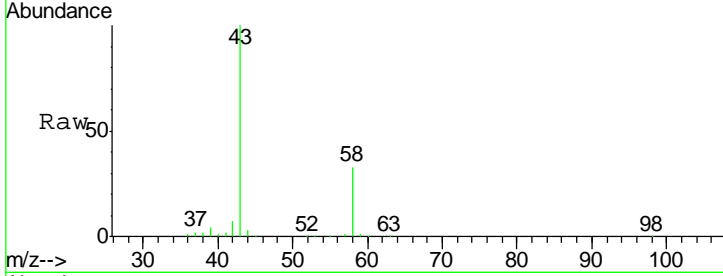




#13
 Acetone
 Concen: 46.021 ug/L
 RT: 2.66 min Scan# 409
 Delta R.T. 0.00 min
 Lab File: VU038312.D
 Acq: 27 May 2020 11:55

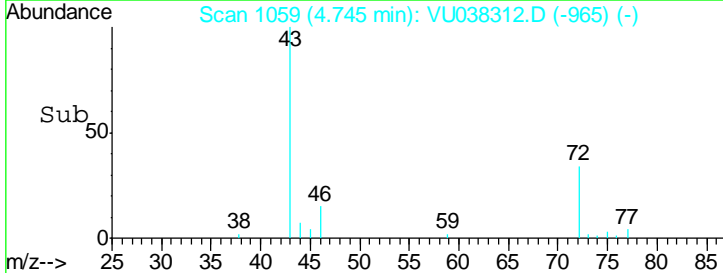
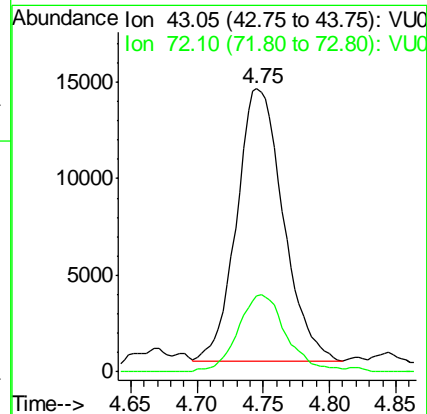
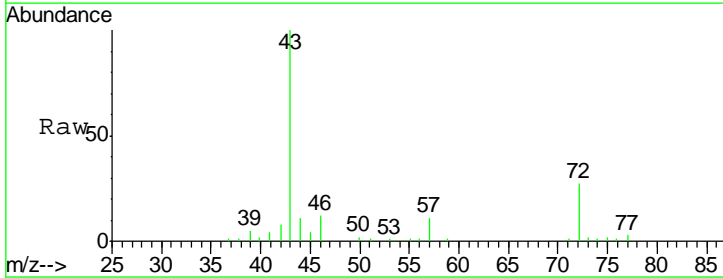
Instrument :
 MSVOA_U
 ClientSampled :
 BE4Y5

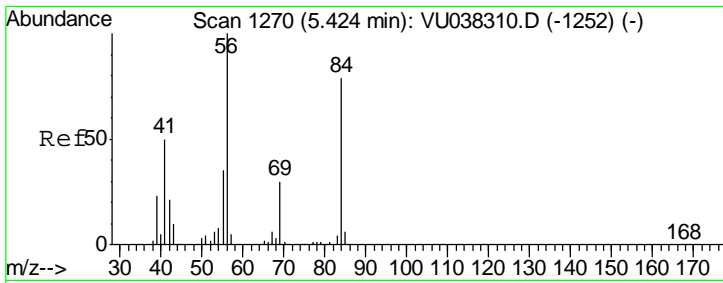
Tgt Ion: 43 Resp: 216304
 Ion Ratio Lower Upper
 43 100
 58 32.5 0.0 63.6



#21
 2-Butanone
 Concen: 4.131 ug/L
 RT: 4.75 min Scan# 1059
 Delta R.T. 0.00 min
 Lab File: VU038312.D
 Acq: 27 May 2020 11:55

Tgt Ion: 43 Resp: 34270
 Ion Ratio Lower Upper
 43 100
 72 29.7 13.5 40.4

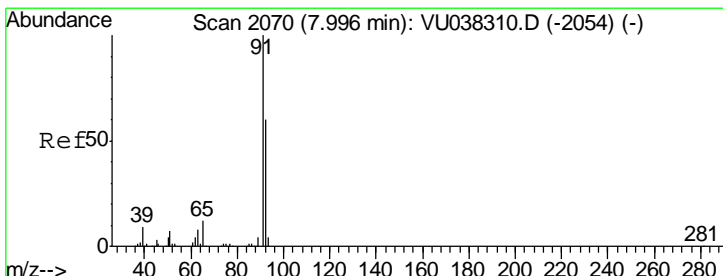
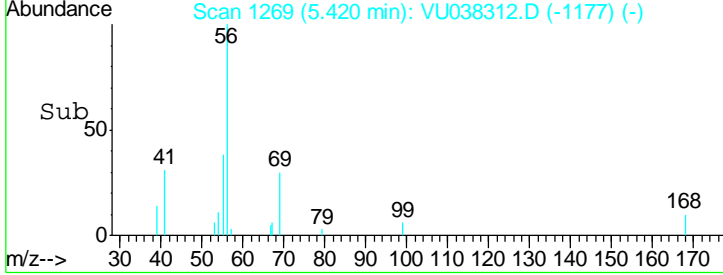
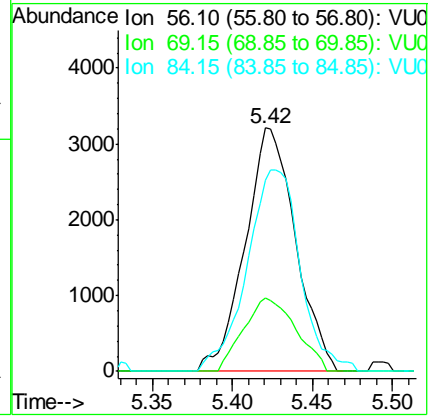
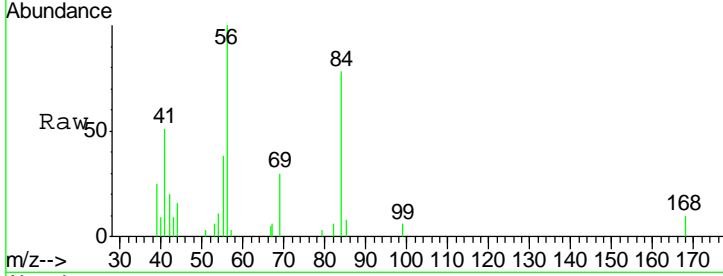




#30
 Cyclohexane
 Concen: 0.159 ug/L
 RT: 5.42 min Scan# 1269
 Delta R.T. -0.00 min
 Lab File: VU038312.D
 Acq: 27 May 2020 11:55

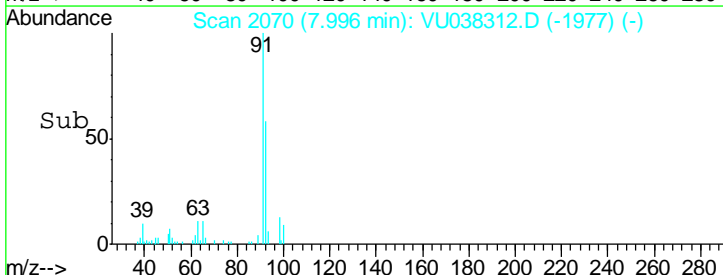
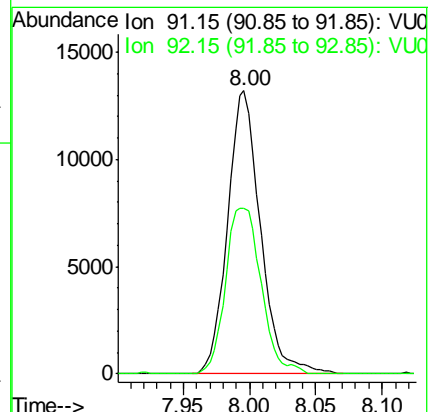
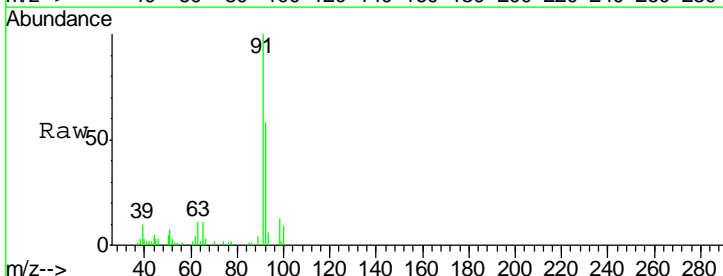
Instrument : MSVOA_U
 ClientSampled : BE4Y5

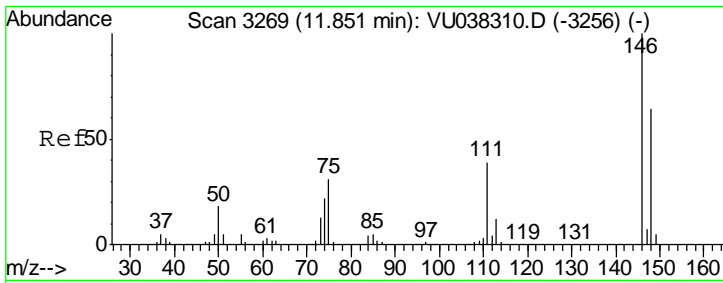
Tgt Ion	Resp	Lower	Upper
56	6923		
69	31.2	24.2	36.4
84	87.8	68.5	102.7



#42
 Toluene
 Concen: 0.210 ug/L
 RT: 8.00 min Scan# 2070
 Delta R.T. -0.00 min
 Lab File: VU038312.D
 Acq: 27 May 2020 11:55

Tgt Ion	Resp	Lower	Upper
91	22813		
92	58.5	40.9	75.9





#63
 1,4-Dichlorobenzene
 Concen: 0.253 ug/L
 RT: 11.85 min Scan# 3269
 Delta R.T. -0.00 min
 Lab File: VU038312.D
 Acq: 27 May 2020 11:55

Instrument : MSVOA_U
 ClientSampleID : BE4Y5

Tot Ion	Resp	Lower	Upper
146	13127		
111	39.8	27.2	50.6
148	62.8	43.8	81.3

