

Data Path : Z:\VOASRV\HPCHEM1\MSVOA U\DATA\VU052820\
 Data File : VU038343.D
 Acq On : 28 May 2020 13:46
 Operator : JC/MD
 Sample : L2753-03ME
 Misc : 10.28µ/5.0mL/100 uL/5.0mL/MSVOA_U/MEOH
 ALS Vial : 1 Sample Multiplier: 1

Instrument :
 MSVOA_U
 ClientSampled :

Quant Time: May 29 04:32:50 2020
 Quant Method : Z:\VOASRV\HPCHEM1\MSVOA_U\METHOD\SOMULM052820WMA.M
 Quant Title : VOC Analysis
 QLast Update : Fri May 29 04:31:03 2020
 Response via : Initial Calibration

Internal Standards	R.T.	QIon	Response	Conc	Units	Dev(Min)
1) 1,4-Difluorobenzene	6.28	114	867497	50.00	µg/L	0.00
28) Chlorobenzene-d5	9.44	117	831616	50.00	µg/L	0.00
60) 1,4-Dichlorobenzene-d4	11.83	152	386212	50.00	µg/L	0.00

System Monitoring Compounds

4) Vinyl Chloride-d3	1.61	65	260826	47.90	µg/L	0.00
Spiked Amount	50.000	Range	60 - 135	Recovery	=	95.80%
7) Chloroethane-d5	1.92	69	155761	37.02	µg/L	0.00
Spiked Amount	50.000	Range	70 - 130	Recovery	=	74.04%
11) 1,1-Dichloroethene-d2	2.57	63	391148	35.14	µg/L	-0.03
Spiked Amount	50.000	Range	60 - 125	Recovery	=	70.28%
21) 2-Butanone-d5	4.68	46	468370	90.52	µg/L	0.02
Spiked Amount	100.000	Range	40 - 130	Recovery	=	90.52%
24) Chloroform-d	5.10	84	463665	43.36	µg/L	0.00
Spiked Amount	50.000	Range	70 - 125	Recovery	=	86.72%
26) 1,2-Dichloroethane-d4	5.74	65	320677	43.76	µg/L	0.00
Spiked Amount	50.000	Range	70 - 125	Recovery	=	87.52%
32) Benzene-d6	5.76	84	1011413	46.81	µg/L	0.00
Spiked Amount	50.000	Range	70 - 125	Recovery	=	93.62%
36) 1,2-Dichloropropane-d6	6.72	67	310770	46.39	µg/L	0.00
Spiked Amount	50.000	Range	70 - 120	Recovery	=	92.78%
41) Toluene-d8	7.92	98	889735	46.58	µg/L	0.00
Spiked Amount	50.000	Range	80 - 120	Recovery	=	93.16%
43) trans-1,3-Dichloropropene-	8.20	79	152493	45.73	µg/L	0.00
Spiked Amount	50.000	Range	60 - 125	Recovery	=	91.46%
47) 2-Hexanone-d5	8.69	63	349109	98.99	µg/L	0.03
Spiked Amount	100.000	Range	45 - 130	Recovery	=	98.99%
57) 1,1,2,2-Tetrachloroethane-	10.78	84	420965	42.47	µg/L	0.00
Spiked Amount	50.000	Range	65 - 120	Recovery	=	84.94%
64) 1,2-Dichlorobenzene-d4	12.21	152	330939	46.23	µg/L	0.00
Spiked Amount	50.000	Range	80 - 120	Recovery	=	92.46%

Target Compounds

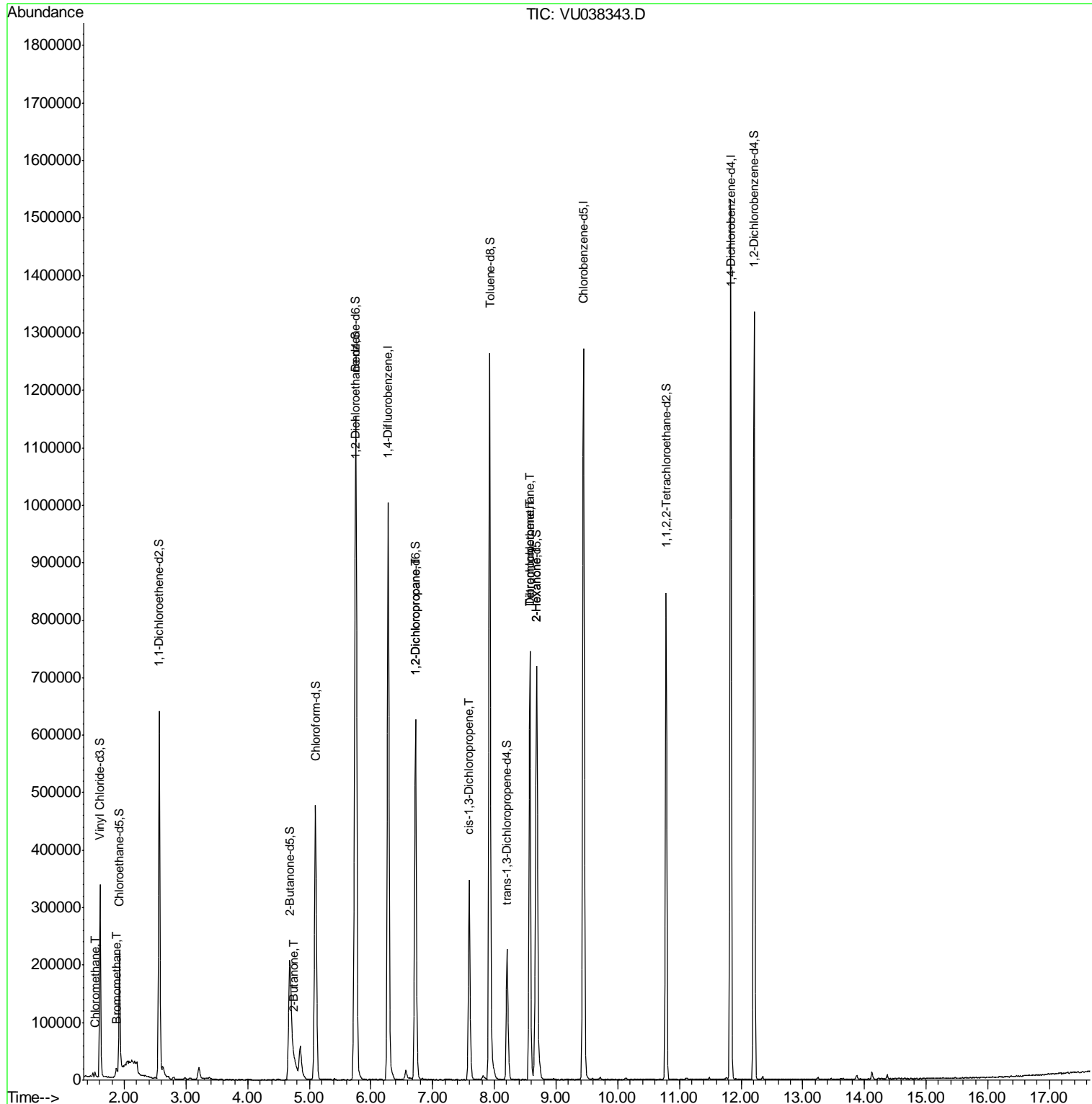
Target Compounds	R.T.	QIon	Response	Conc	Units	Ovalue
3) Chloromethane	1.53	50	5991	0.995	µg/L	99
6) Bromomethane	1.87	94	4537	1.668	µg/L	96
22) 2-Butanone	4.76	43	10240	1.699	µg/L #	56
37) 1,2-Dichloropropane	6.72	63	33846	5.588	µg/L #	86
39) cis-1,3-Dichloropropene	7.59	75	9634	0.999	µg/L #	70
46) Tetrachloroethene	8.57	164	168369	38.539	µg/L	97
48) 2-Hexanone	8.69	43	39217	4.821	µg/L #	67
49) Dibromochloromethane	8.57	129	159406	27.388	µg/L #	10

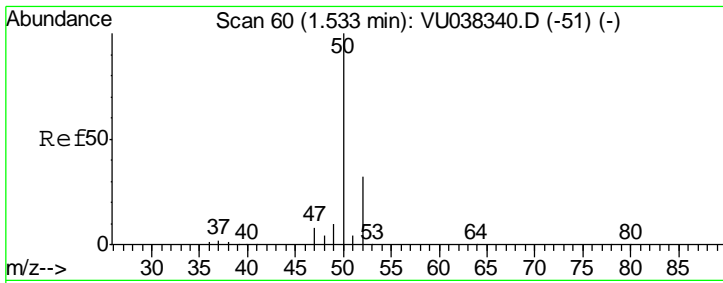
(#) = qualifier out of range (m) = manual integration (+) = signals summed

Data Path : Z:\VOASRV\HPCHEM1\MSVOA U\DATA\VU052820\
 Data File : VU038343.D
 Acq On : 28 May 2020 13:46
 Operator : JC/MD
 Sample : L2753-03ME
 Misc : 10.28µ/5.0mL/100 uL/5.0mL/MSVOA_U/MEOH
 ALS Vial : 1 Sample Multiplier: 1

Instrument :
 MSVOA_U
 Client Sampled :

Quant Time: May 29 04:32:50 2020
 Quant Method : Z:\VOASRV\HPCHEM1\MSVOA_U\METHOD\SOMULM052820WMA.M
 Quant Title : VOC Analysis
 QLast Update : Fri May 29 04:31:03 2020
 Response via : Initial Calibration

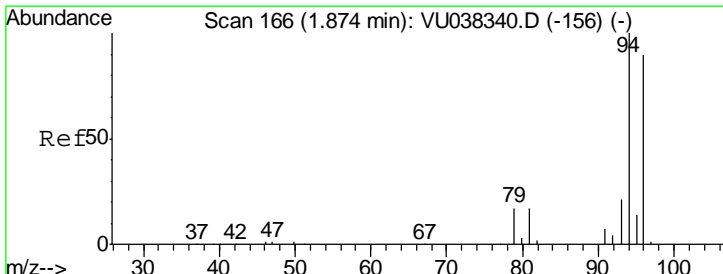
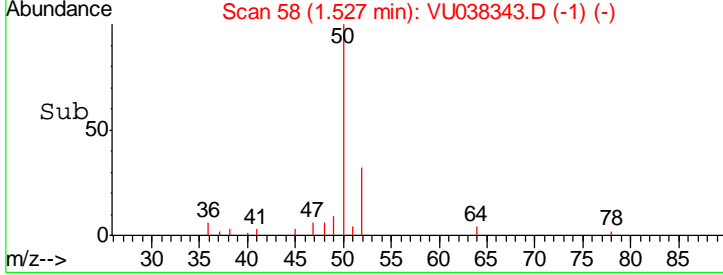
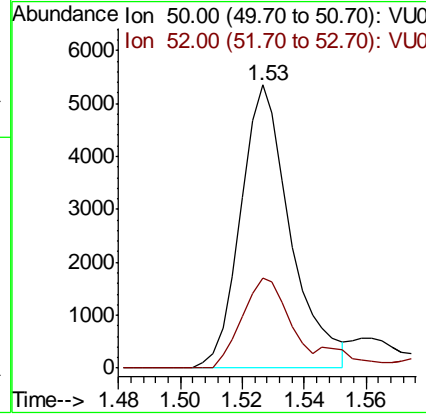
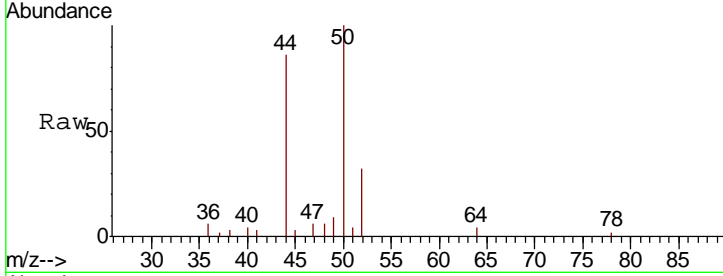




#3
 Chloromethane
 Concen: 0.995 ug/L
 RT: 1.53 min Scan# 58
 Delta R.T. -0.01 min
 Lab File: VU038343.D
 Acq: 28 May 2020 13:46

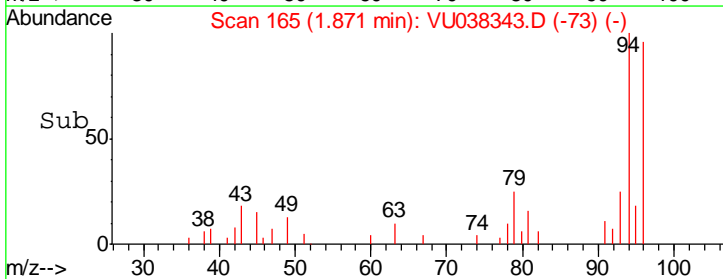
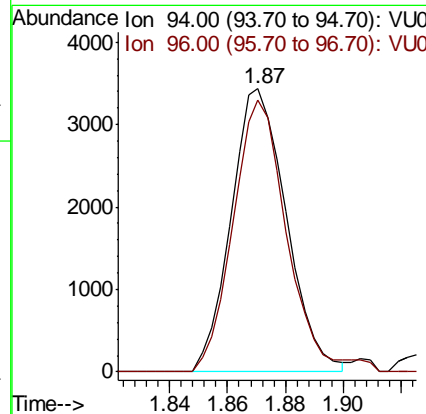
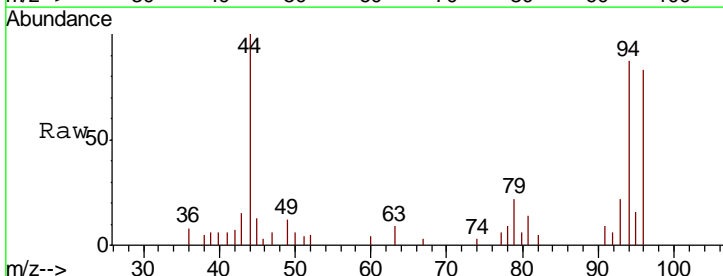
Instrument : MSVOA_U
 ClientSampled :

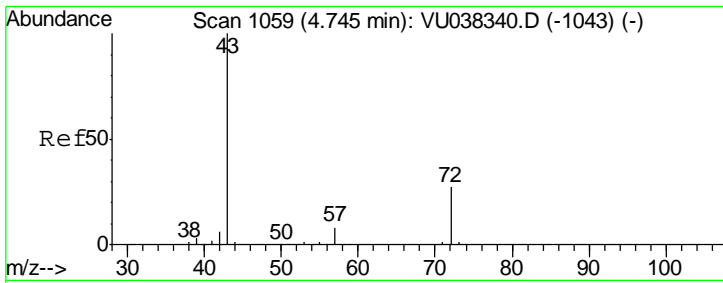
Tgt Ion	Resp	Lower	Upper
50	100		
52	31.6	22.5	41.7



#6
 Bromomethane
 Concen: 1.668 ug/L
 RT: 1.87 min Scan# 165
 Delta R.T. -0.00 min
 Lab File: VU038343.D
 Acq: 28 May 2020 13:46

Tgt Ion	Resp	Lower	Upper
94	100		
96	95.9	64.3	119.5

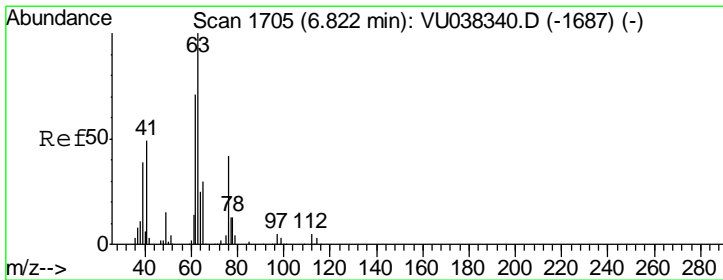
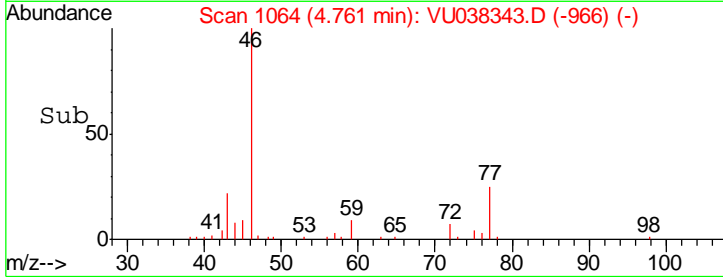
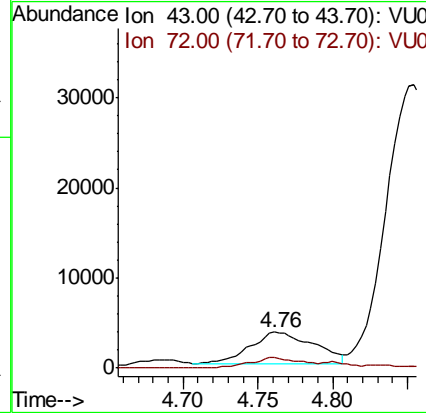
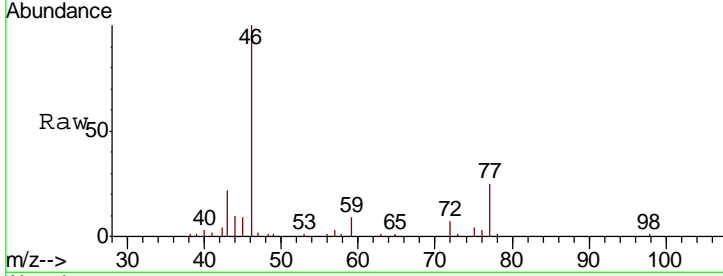




#22
 2-Butanone
 Concen: 1.699 ug/L
 RT: 4.76 min Scan# 1064
 Delta R.T. 0.02 min
 Lab File: VU038343.D
 Acq: 28 May 2020 13:46

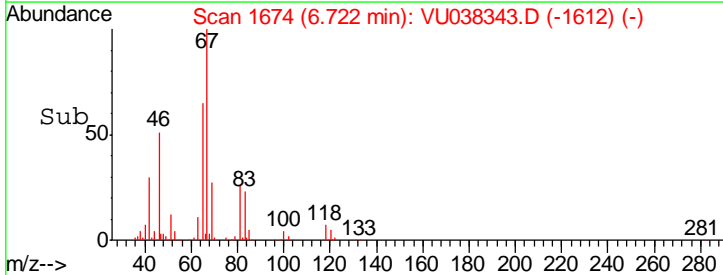
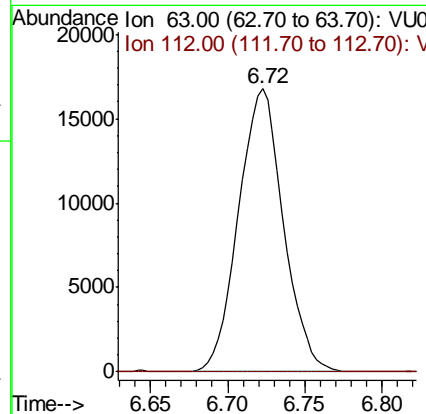
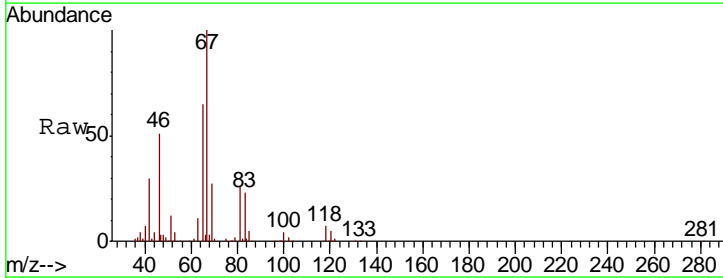
Instrument :
 MSVOA_U
 ClientSampled :

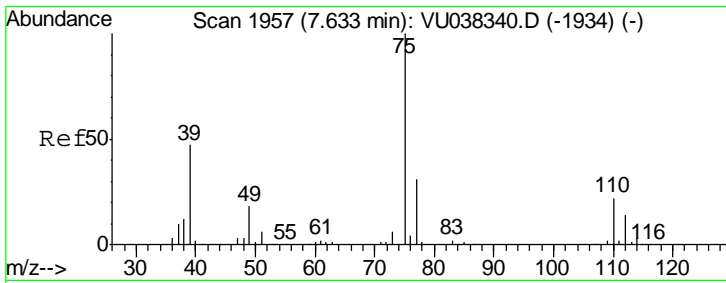
Tgt Ion	Resp	Lower	Upper
43	10240		
72	4.6	13.8	41.3#



#37
 1,2-Dichloropropane
 Concen: 5.588 ug/L
 RT: 6.72 min Scan# 1674
 Delta R.T. -0.10 min
 Lab File: VU038343.D
 Acq: 28 May 2020 13:46

Tgt Ion	Resp	Lower	Upper
63	33846		
112	0.0	3.6	5.4#

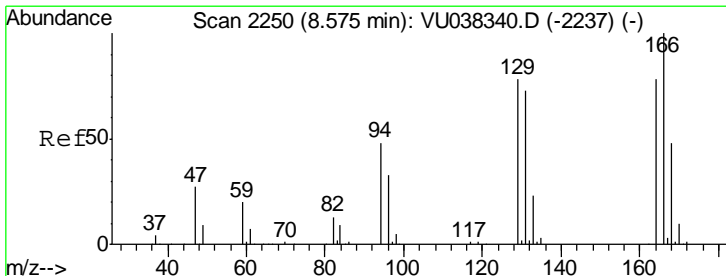
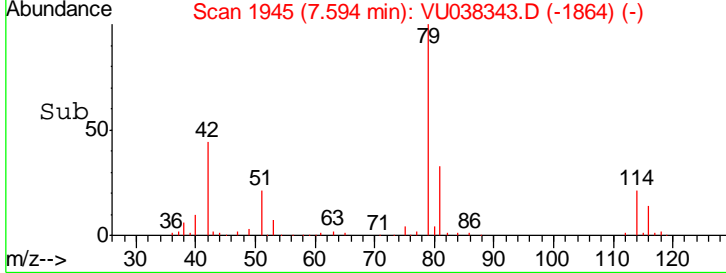
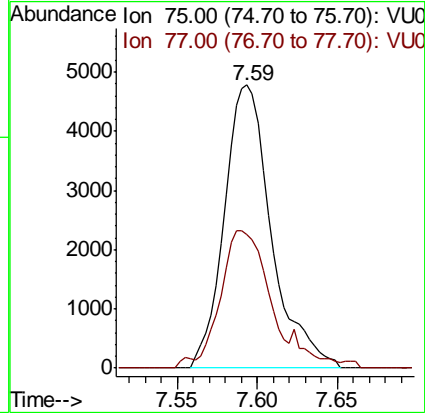
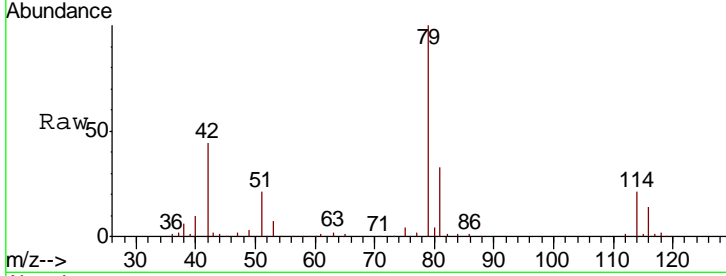




#39
 cis-1,3-Dichloropropene
 Concen: 0.999 ug/L
 RT: 7.59 min Scan# 1945
 Delta R.T. -0.04 min
 Lab File: VU038343.D
 Acq: 28 May 2020 13:46

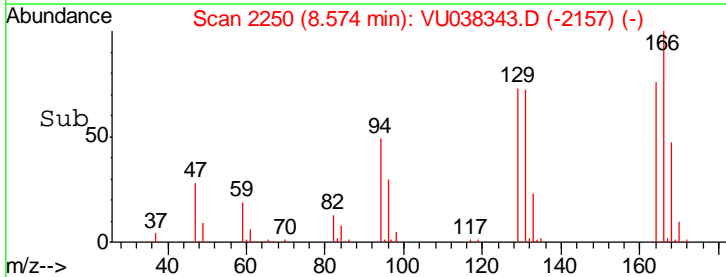
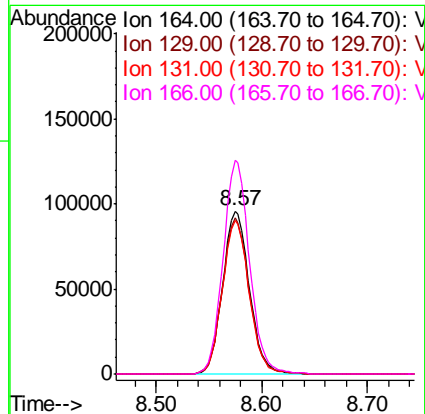
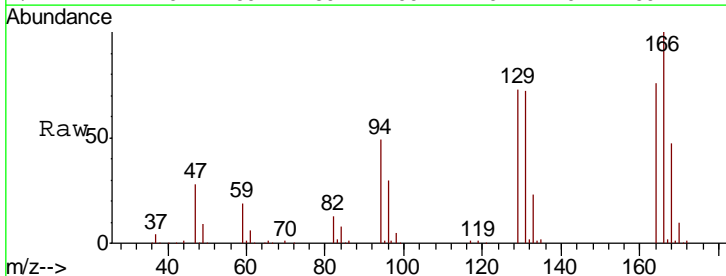
Instrument : MSVOA_U
 ClientSampled :

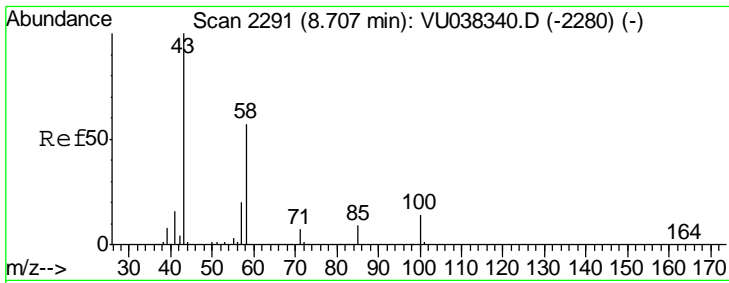
Tgt Ion	Resp	Lower	Upper
75	9634		
77	47.3	21.6	40.0#



#46
 Tetrachloroethene
 Concen: 38.539 ug/L
 RT: 8.57 min Scan# 2250
 Delta R.T. -0.00 min
 Lab File: VU038343.D
 Acq: 28 May 2020 13:46

Tgt Ion	Resp	Lower	Upper
164	168369		
164	100		
129	95.6	67.2	124.8
131	93.8	63.4	117.8
166	130.9	88.5	164.4

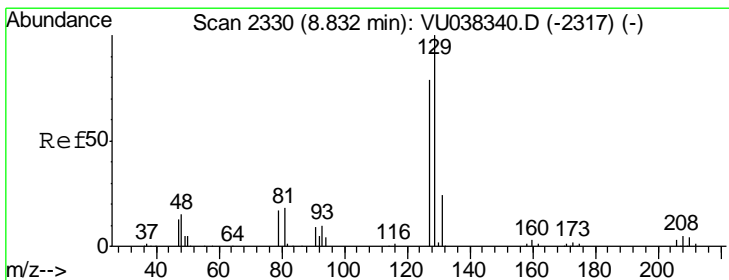
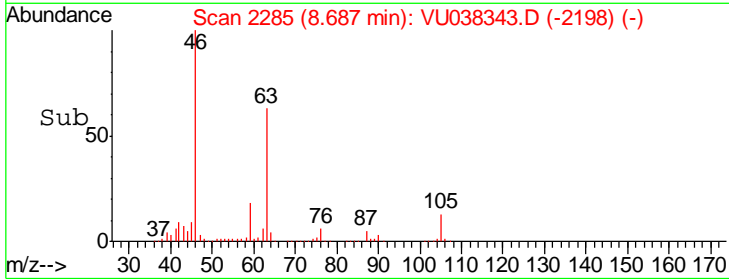
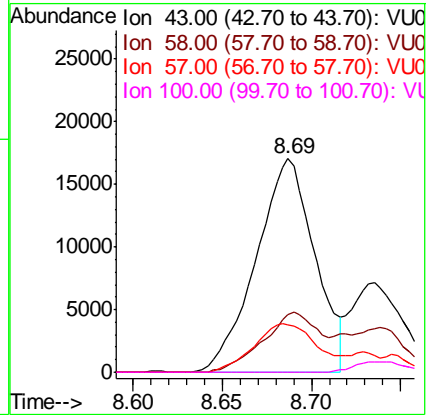
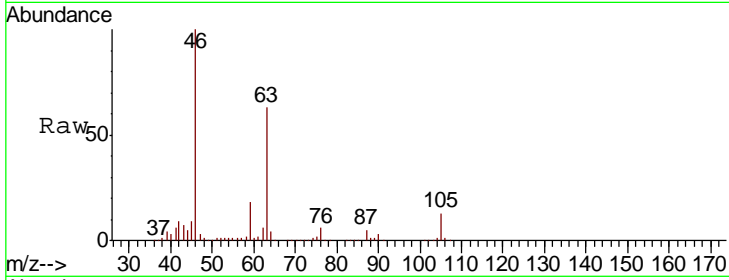




#48
 2-Hexanone
 Concen: 4.821 ug/L
 RT: 8.69 min Scan# 2285
 Delta R.T. -0.02 min
 Lab File: VU038343.D
 Acq: 28 May 2020 13:46

Instrument : MSVOA_U
 ClientSampled :

Tgt Ion	Resp	Lower	Upper
43	39217		
58	26.7	45.5	68.3#
57	24.8	16.3	24.5#
100	0.0	10.5	15.7#



#49
 Dibromochloromethane
 Concen: 27.388 ug/L
 RT: 8.57 min Scan# 2250
 Delta R.T. -0.26 min
 Lab File: VU038343.D
 Acq: 28 May 2020 13:46

Tgt Ion	Resp	Lower	Upper
129	159406		
127	0.0	55.2	102.6#

