

Data Path : Z:\VOASRV\HPCHEM1\MSVOA_U\DATA\VU052820\
 Data File : VU038344.D
 Acq On : 28 May 2020 14:23
 Operator : JC/MD
 Sample : L2756-04 200X
 Misc : 5.0mL/MSVOA_U/WATER
 ALS Vial : 1 Sample Multiplier: 1

Instrument :
 MSVOA_U
 ClientSampled :
 ETKW8

Integration Parameters: LSCINT.P

Integrator: RTE
 Smoothing : OFF
 Sampling : 1
 Start Thrs: 0.2
 Stop Thrs : 0

Filtering: 5
 Min Area: 0 % of largest Peak
 Max Peaks: 100
 Peak Location: TOP

If leading or trailing edge < 100 prefer < Baseline drop else tangent >
 Peak separation: 5

Method : Z:\VOASRV\HPCHEM1\MSVOA_U\METHOD\SOMULM052820WMA.M
 Title : VOC Analysis

Signal : TIC

peak #	R.T. min	first scan	max scan	last scan	PK TY	peak height	corr. area	corr. % max.	% of total
1	1.369	6	9	17	rVB4	3382	3015	0.08%	0.011%
2	1.610	76	84	99	rBV	327353	364888	9.26%	1.276%
3	1.929	174	183	195	rVB	244199	311038	7.89%	1.087%
4	2.591	376	389	408	rBV2	575210	997489	25.31%	3.487%
5	2.752	437	439	443	rVB3	725	533	0.01%	0.002%
6	2.819	451	460	462	rBV3	3096	4047	0.10%	0.014%
7	2.932	490	495	502	rBV4	580	865	0.02%	0.003%
8	2.990	508	513	518	rBV4	390	505	0.01%	0.002%
9	3.012	518	520	525	rVB2	467	360	0.01%	0.001%
10	3.076	527	540	562	rBV	69372	134080	3.40%	0.469%
11	3.218	571	584	597	rBV2	11475	25641	0.65%	0.090%
12	3.318	608	615	620	rBV	398	518	0.01%	0.002%
13	3.388	628	637	638	rBV5	3298	3931	0.10%	0.014%
14	3.626	707	711	714	rBV	618	377	0.01%	0.001%
15	3.739	733	746	758	rVB5	6692	15176	0.39%	0.053%
16	3.909	784	799	818	rBV3	39448	94565	2.40%	0.331%
17	4.572	987	1005	1019	rBV3	15837	37913	0.96%	0.133%
18	4.707	1019	1047	1075	rBV2	1485426	3941692	100.00%	13.780%
19	5.102	1153	1170	1191	rBV	442647	954564	24.22%	3.337%
20	5.353	1231	1248	1266	rBV	372880	849198	21.54%	2.969%
21	5.578	1313	1318	1321	rVB2	510	377	0.01%	0.001%
22	5.761	1351	1375	1409	rVV2	954705	2567013	65.12%	8.974%
23	5.919	1421	1424	1425	rBV2	648	373	0.01%	0.001%
24	6.006	1449	1451	1453	rBV	532	368	0.01%	0.001%
25	6.018	1453	1455	1459	rVB4	776	520	0.01%	0.002%
26	6.051	1461	1465	1466	rBV2	823	521	0.01%	0.002%
27	6.160	1493	1499	1501	rBV4	1206	1269	0.03%	0.004%
28	6.218	1512	1517	1519	rVB3	540	404	0.01%	0.001%
29	6.282	1522	1537	1567	rBV	755100	1466428	37.20%	5.126%
30	6.568	1613	1626	1641	rBV7	19130	45599	1.16%	0.159%
31	6.723	1658	1674	1689	rBV	564286	1088020	27.60%	3.804%
32	7.141	1798	1804	1807	rVB2	437	343	0.01%	0.001%
33	7.211	1819	1826	1832	rBV5	1830	2481	0.06%	0.009%
34	7.298	1850	1853	1860	rVB2	370	330	0.01%	0.001%

Data Path : Z:\VOASRV\HPCHEM1\MSVOA_U\DATA\VU052820\
 Data File : VU038344.D
 Acq On : 28 May 2020 14:23
 Operator : JC/MD
 Sample : L2756-04 200X
 Misc : 5.0mL/MSVOA_U/WATER
 ALS Vial : 1 Sample Multiplier: 1

Instrument :
 MSVOA_U
 ClientSampleId :
 ETKW8

Integration Parameters: LSCINT.P

Integrator: RTE
 Smoothing : OFF
 Sampling : 1
 Start Thrs: 0.2
 Stop Thrs : 0

Filtering: 5
 Min Area: 0 % of largest Peak
 Max Peaks: 100
 Peak Location: TOP

If leading or trailing edge < 100 prefer < Baseline drop else tangent >
 Peak separation: 5

Method : Z:\VOASRV\HPCHEM1\MSVOA_U\METHOD\SOMULM052820WMA.M
 Title : VOC Analysis

35	7.594	1931	1945	1965	rBV	326896	570111	14.46%	1.993%
36	7.703	1972	1979	1988	rVB6	1099	1867	0.05%	0.007%
37	7.819	2004	2015	2029	rVB3	22837	38883	0.99%	0.136%
38	7.925	2029	2048	2060	rBV	1107803	1995313	50.62%	6.975%
39	7.996	2061	2070	2103	rVB	636133	1184590	30.05%	4.141%
40	8.205	2122	2135	2150	rBV	227165	378705	9.61%	1.324%
41	8.343	2177	2178	2184	rVB2	553	362	0.01%	0.001%
42	8.575	2244	2250	2257	rVB5	3161	4124	0.10%	0.014%
43	8.658	2262	2276	2308	rBV	844635	1489716	37.79%	5.208%
44	8.809	2320	2323	2328	rVB3	746	460	0.01%	0.002%
45	8.832	2328	2330	2335	rVB3	1030	718	0.02%	0.003%
46	8.861	2335	2339	2341	rBV2	705	385	0.01%	0.001%
47	8.883	2341	2346	2348	rBV2	679	590	0.01%	0.002%
48	8.938	2355	2363	2372	rVB7	3687	6643	0.17%	0.023%
49	9.189	2437	2441	2446	rVB5	966	992	0.03%	0.003%
50	9.440	2502	2519	2554	rBV	1064851	1840639	46.70%	6.435%
51	9.591	2555	2566	2582	rBV	121636	195763	4.97%	0.684%
52	9.713	2591	2604	2633	rVB	228683	392083	9.95%	1.371%
53	9.870	2648	2653	2656	rBV2	438	504	0.01%	0.002%
54	10.005	2690	2695	2699	rBV2	479	442	0.01%	0.002%
55	10.121	2719	2731	2745	rBV2	97792	177154	4.49%	0.619%
56	10.256	2767	2773	2780	rVB4	1256	1629	0.04%	0.006%
57	10.433	2825	2828	2831	rBV2	443	366	0.01%	0.001%
58	10.501	2842	2849	2860	rBV3	3760	5306	0.13%	0.019%
59	10.774	2921	2934	2949	rBV	725488	1170633	29.70%	4.092%
60	10.845	2951	2956	2963	rVB4	2559	2975	0.08%	0.010%
61	10.925	2972	2981	2988	rVB3	4903	7375	0.19%	0.026%
62	11.012	2998	3008	3014	rBV	20892	34054	0.86%	0.119%
63	11.105	3028	3037	3050	rVB	16883	25442	0.65%	0.089%
64	11.243	3073	3080	3087	rBV4	974	1619	0.04%	0.006%
65	11.311	3091	3101	3117	rVV4	7372	15087	0.38%	0.053%
66	11.427	3133	3137	3140	rVV3	816	743	0.02%	0.003%
67	11.484	3144	3155	3166	rVV	47096	72928	1.85%	0.255%
68	11.552	3166	3176	3185	rVV2	24659	36805	0.93%	0.129%
69	11.600	3185	3191	3200	rVB4	5940	8484	0.22%	0.030%
70	11.742	3232	3235	3236	rBV	627	364	0.01%	0.001%
71	11.764	3237	3242	3248	rVB6	2063	2583	0.07%	0.009%

Data Path : Z:\VOASRV\HPCHEM1\MSVOA_U\DATA\VU052820\
 Data File : VU038344.D
 Acq On : 28 May 2020 14:23
 Operator : JC/MD
 Sample : L2756-04 200X
 Misc : 5.0mL/MSVOA_U/WATER
 ALS Vial : 1 Sample Multiplier: 1

Instrument :
 MSVOA_U
 ClientSampleId :
 ETKW8

Integration Parameters: LSCINT.P

Integrator: RTE
 Smoothing : OFF
 Sampling : 1
 Start Thrs: 0.2
 Stop Thrs : 0

Filtering: 5
 Min Area: 0 % of largest Peak
 Max Peaks: 100
 Peak Location: TOP

If leading or trailing edge < 100 prefer < Baseline drop else tangent >
 Peak separation: 5

Method : Z:\VOASRV\HPCHEM1\MSVOA_U\METHOD\SOMULM052820WMA.M
 Title : VOC Analysis

72	11.829	3248	3262	3278	rBV	1153758	1836786	46.60%	6.421%
73	11.909	3280	3287	3296	rVV	15126	23437	0.59%	0.082%
74	11.960	3296	3303	3322	rVB3	10006	15140	0.38%	0.053%
75	12.108	3339	3349	3357	rBV5	11565	18715	0.47%	0.065%
76	12.208	3367	3380	3406	rVB	1181292	1882042	47.75%	6.579%
77	12.327	3406	3417	3432	rBV	111005	174115	4.42%	0.609%
78	12.501	3459	3471	3483	rBV6	8577	16612	0.42%	0.058%
79	12.591	3493	3499	3505	rVB4	2825	3719	0.09%	0.013%
80	12.636	3508	3513	3515	rBV3	762	763	0.02%	0.003%
81	12.697	3526	3532	3537	rBV4	1445	1891	0.05%	0.007%
82	12.771	3551	3555	3561	rVB3	3153	3316	0.08%	0.012%
83	13.050	3637	3642	3653	rVB5	4613	7009	0.18%	0.025%
84	13.108	3658	3660	3667	rVB3	519	408	0.01%	0.001%
85	13.179	3675	3682	3683	rBV5	1511	1491	0.04%	0.005%
86	13.243	3698	3702	3709	rVB5	1987	2147	0.05%	0.008%
87	13.327	3724	3728	3733	rVB5	1904	1809	0.05%	0.006%
88	13.356	3733	3737	3741	rBV2	499	503	0.01%	0.002%
89	13.481	3768	3776	3785	rVB5	6447	10736	0.27%	0.038%
90	13.549	3788	3797	3810	rVB2	20084	30953	0.79%	0.108%
91	13.658	3822	3831	3841	rVB3	23330	37430	0.95%	0.131%
92	13.761	3855	3863	3872	rVB3	3751	5902	0.15%	0.021%
93	13.873	3891	3898	3906	rVB7	4654	6888	0.17%	0.024%
94	14.070	3957	3959	3962	rBV2	642	344	0.01%	0.001%
95	14.121	3962	3975	3993	rBV	1076512	1740434	44.15%	6.084%
96	14.243	4005	4013	4022	rBV	11113	16437	0.42%	0.057%
97	14.372	4045	4053	4060	rVB6	4037	6044	0.15%	0.021%
98	14.713	4156	4159	4160	rBV2	1386	812	0.02%	0.003%
99	15.275	4324	4334	4350	rVB	62164	105483	2.68%	0.369%
100	15.465	4383	4393	4408	rVB2	43767	72906	1.85%	0.255%

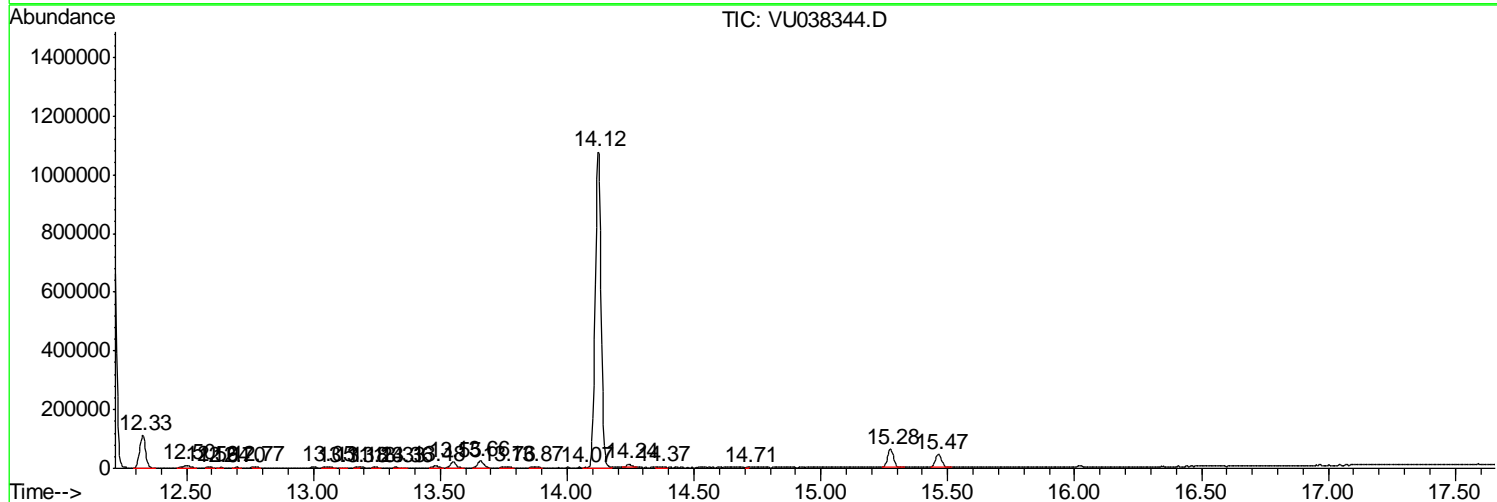
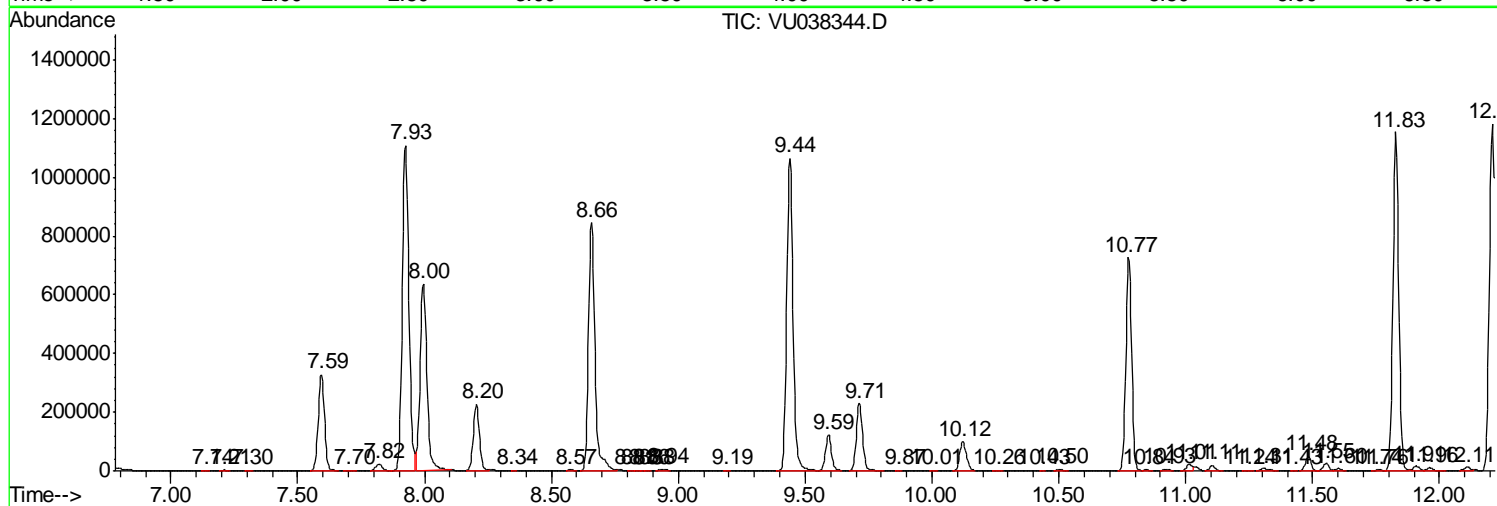
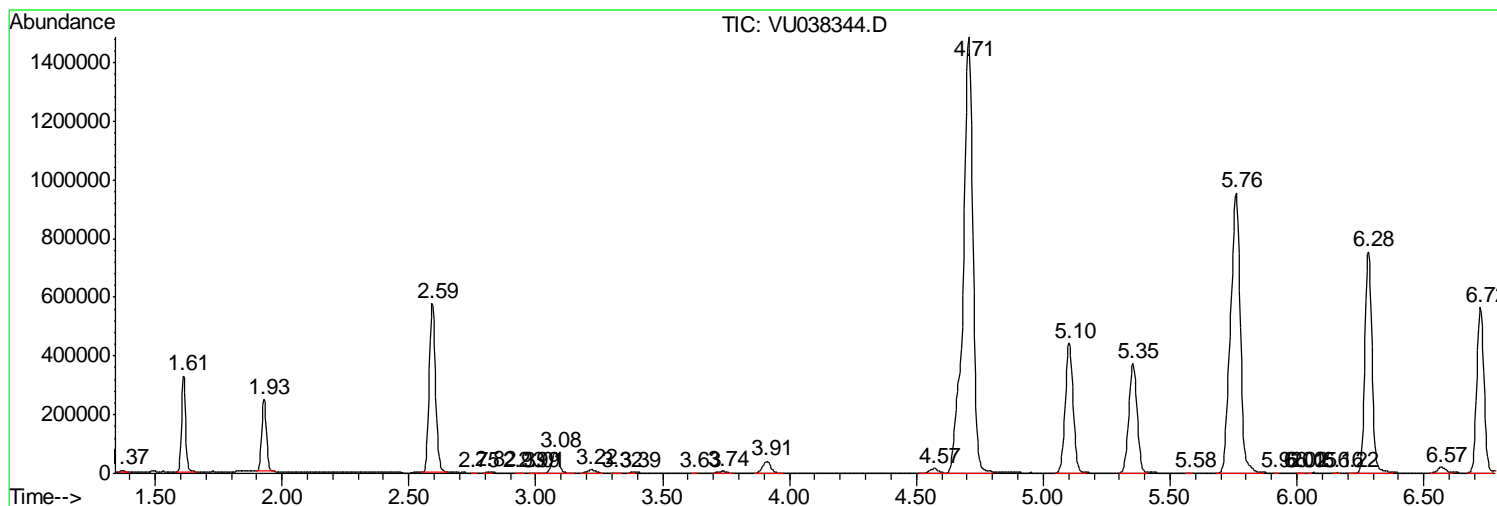
Sum of corrected areas: 28605150

Data Path : Z:\VOASRV\HPCHEM1\MSVOA_U\DATA\VU052820\
 Data File : VU038344.D
 Acq On : 28 May 2020 14:23
 Operator : JC/MD
 Sample : L2756-04 200X
 Misc : 5.0mL/MSVOA_U/WATER
 ALS Vial : 1 Sample Multiplier: 1

Instrument :
 MSVOA_U
 ClientSampled :
 ETKW8

Quant Method : Z:\VOASRV\HPCHEM1\MSVOA_U\METHOD\SOMULM052820WMA.M
 Quant Title : VOC Analysis

TIC Library : C:\DATABASE\NIST11.L
 TIC Integration Parameters: LSCINT.P



Data Path : Z:\VOASRV\HPCHEM1\MSVOA_U\DATA\VU052820\
 Data File : VU038344.D
 Acq On : 28 May 2020 14:23
 Operator : JC/MD
 Sample : L2756-04 200X
 Misc : 5.0mL/MSVOA_U/WATER
 ALS Vial : 1 Sample Multiplier: 1

Instrument :
 MSVOA_U
 ClientSampleId :
 ETKW8

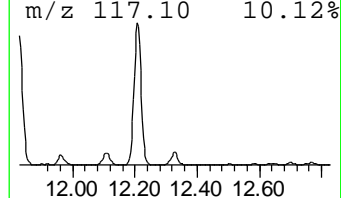
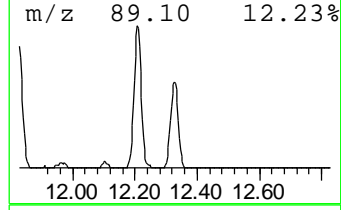
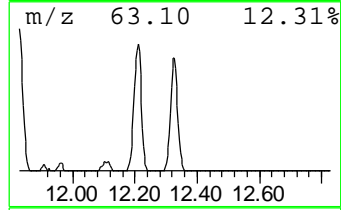
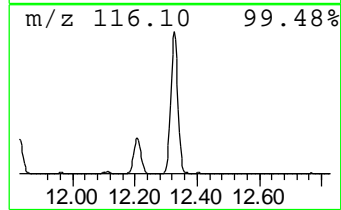
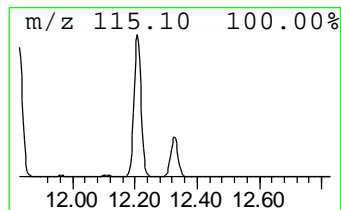
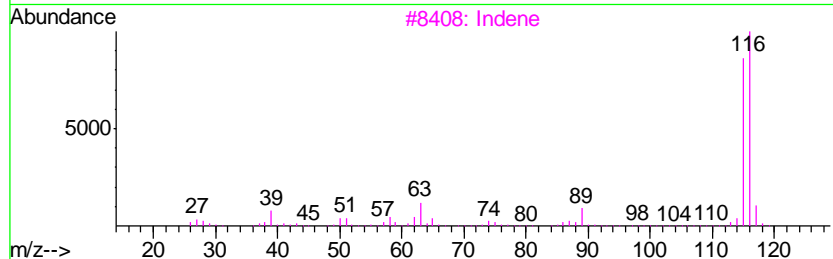
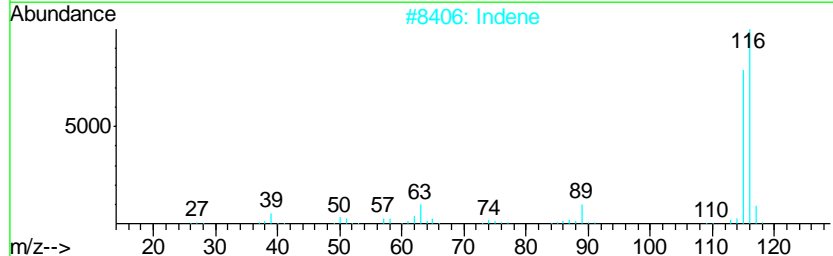
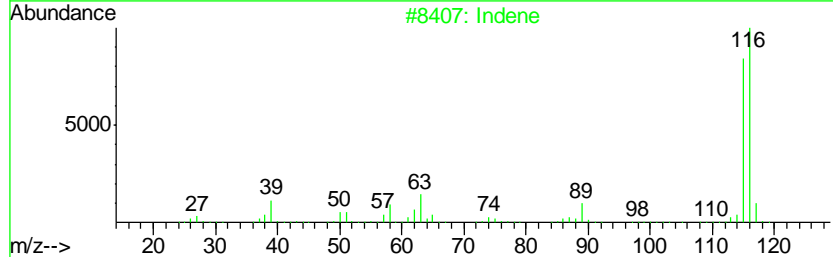
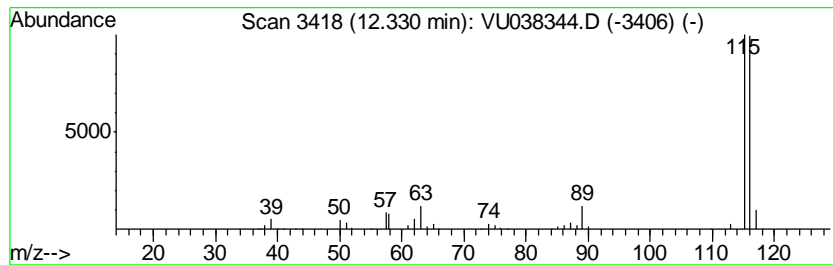
Quant Method : Z:\VOASRV\HPCHEM1\MSVOA_U\METHOD\SOMULM052820WMA.M
 Quant Title : VOC Analysis

TIC Library : C:\DATABASE\NIST11.L
 TIC Integration Parameters: LSCINT.P

 Peak Number 2 Indene Concentration Rank 3

R.T.	EstConc	Area	Relative to ISTD	R.T.
12.33	4.74 ug/L	174115	1,4-Dichlorobenzene-d4	11.83

Hit#	of	Tentative ID	MW	MolForm	CAS#	Qual
1	5	Indene	116	C9H8	000095-13-6	95
2		Indene	116	C9H8	000095-13-6	95
3		Indene	116	C9H8	000095-13-6	94
4		3-Methylphenylacetylene	116	C9H8	000766-82-5	91
5		Benzene, 1-ethynyl-4-methyl-	116	C9H8	000766-97-2	91



Data Path : Z:\VOASRV\HPCHEM1\MSVOA_U\DATA\VU052820\
 Data File : VU038344.D
 Acq On : 28 May 2020 14:23
 Operator : JC/MD
 Sample : L2756-04 200X
 Misc : 5.0mL/MSVOA_U/WATER
 ALS Vial : 1 Sample Multiplier: 1

Instrument :
 MSVOA_U
 ClientSampled :
 ETKW8

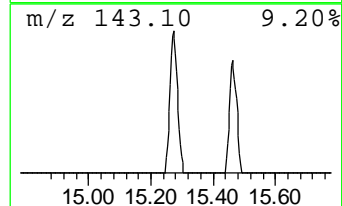
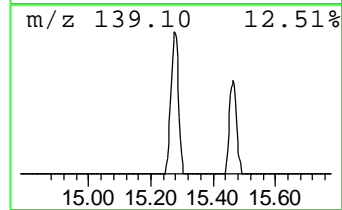
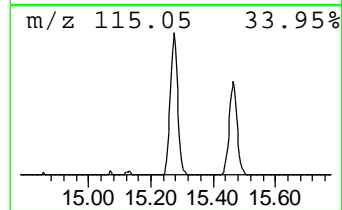
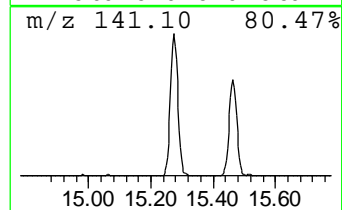
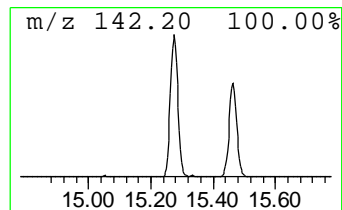
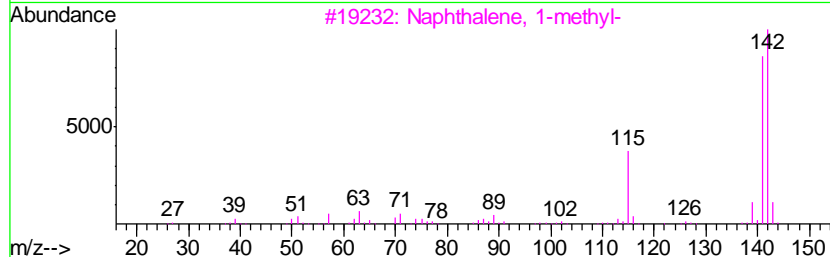
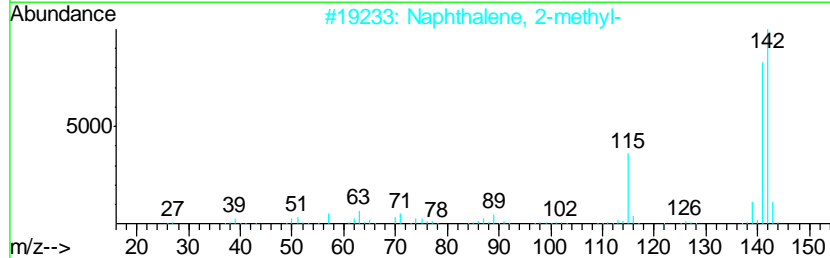
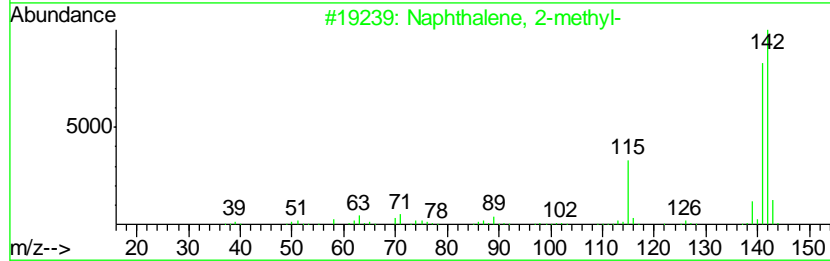
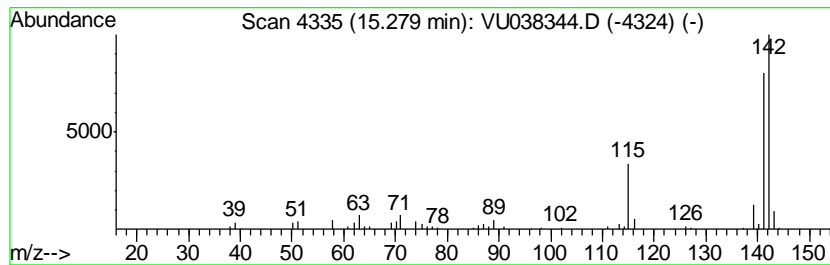
Quant Method : Z:\VOASRV\HPCHEM1\MSVOA_U\METHOD\SOMULM052820WMA.M
 Quant Title : VOC Analysis

TIC Library : C:\DATABASE\NIST11.L
 TIC Integration Parameters: LSCINT.P

 Peak Number 4 Naphthalene, 1-methyl- Concentration Rank 4

R.T.	EstConc	Area	Relative to ISTD	R.T.
15.28	2.87 ug/L	105483	1,4-Dichlorobenzene-d4	11.83

Hit#	of	Tentative ID	MW	MolForm	CAS#	Qual
1	5	Naphthalene, 2-methyl-	142	C11H10	000091-57-6	96
2		Naphthalene, 2-methyl-	142	C11H10	000091-57-6	96
3		Naphthalene, 1-methyl-	142	C11H10	000090-12-0	96
4		Naphthalene, 2-methyl-	142	C11H10	000091-57-6	95
5		Benzocycloheptatriene	142	C11H10	000264-09-5	94



Data Path : Z:\VOASRV\HPCHEM1\MSVOA_U\DATA\VU052820\
Data File : VU038344.D
Acq On : 28 May 2020 14:23
Operator : JC/MD
Sample : L2756-04 200X
Misc : 5.0mL/MSVOA_U/WATER
ALS Vial : 1 Sample Multiplier: 1

Instrument :
MSVOA_U
ClientSampleId :
ETKW8

Quant Method : Z:\VOASRV\HPCHEM1\MSVOA_U\METHOD\SOMULM052820WMA.M
Quant Title : VOC Analysis

TIC Library : C:\DATABASE\NIST11.L
TIC Integration Parameters: LSCINT.P

TIC Top Hit name	RT	EstConc	Units	Response	--Internal Standard--			
					#	RT	Resp	Conc
Indene	12.33	4.7	ug/L	174115	3	11.83	1836790	50.0
Naphthalene, 1-me...	15.28	2.9	ug/L	105483	3	11.83	1836790	50.0