

Data Path : Z:\voasrv\HPCHEM1\MSVOA_U\Data\VU052824\
 Data File : VU059043.D
 Acq On : 28 May 2024 20:35
 Operator : MD/SY
 Sample : VSTDCCC050EC
 Misc : 5.0mL/MSVOA_U/WATER
 ALS Vial : 27 Sample Multiplier: 1

Instrument :
 MSVOA_U
ClientSampleId :

Quant Time: May 29 02:46:44 2024
 Quant Method : Z:\voasrv\HPCHEM1\MSVOA_U\Method\SFAMULM052324WMA.M
 Quant Title : VOC Analysis
 QLast Update : Wed May 29 02:38:59 2024
 Response via : Initial Calibration

Compound	R.T.	QI on	Response	Conc	Units	Dev(Min)
Internal Standards						
1) 1,4-Difluorobenzene	6.242	114	198983	50.000	ug/L	0.00
28) Chlorobenzene-d5	9.412	117	193370	50.000	ug/L	0.00
58) 1,4-Dichlorobenzene-d4	11.807	152	97501	50.000	ug/L	0.00
System Monitoring Compounds						
4) Vinyl chloride-d3	1.592	65	89469	42.513	ug/L	0.00
Spike Amount	50.000	Range	60 - 135	Recovery	=	85.020%
7) Chloroethane-d5	1.872	69	78975	45.154	ug/L	-0.03
Spike Amount	50.000	Range	70 - 130	Recovery	=	90.300%
11) 1,1-Dichloroethene-d2	2.547	63	141548	44.023	ug/L	-0.01
Spike Amount	50.000	Range	60 - 125	Recovery	=	88.040%
21) 2-Butanone-d5	4.615	46	150648	104.211	ug/L	0.00
Spike Amount	100.000	Range	40 - 130	Recovery	=	104.210%
24) Chloroform-d	5.052	84	160201	44.379	ug/L	0.00
Spike Amount	50.000	Range	70 - 125	Recovery	=	88.760%
26) 1,2-Dichloroethane-d4	5.689	65	103944	47.083	ug/L	0.00
Spike Amount	50.000	Range	70 - 125	Recovery	=	94.160%
32) Benzene-d6	5.714	84	320814	48.664	ug/L	0.00
Spike Amount	50.000	Range	70 - 125	Recovery	=	97.320%
36) 1,2-Dichloropropane-d6	6.679	67	109004	50.061	ug/L	0.00
Spike Amount	50.000	Range	70 - 120	Recovery	=	100.120%
41) Toluene-d8	7.891	98	277401	46.945	ug/L	0.00
Spike Amount	50.000	Range	80 - 120	Recovery	=	93.880%
43) trans-1,3-Dichloropropene	8.174	79	45121	46.149	ug/L	0.00
Spike Amount	50.000	Range	60 - 125	Recovery	=	92.300%
47) 2-Hexanone-d5	8.631	63	96480	107.134	ug/L	0.00
Spike Amount	100.000	Range	45 - 130	Recovery	=	107.130%
56) 1,1,2,2-Tetrachloroethane	10.750	84	169402	51.714	ug/L	0.00
Spike Amount	50.000	Range	65 - 120	Recovery	=	103.420%
66) 1,2-Dichlorobenzene-d4	12.187	152	98242	48.833	ug/L	0.00
Spike Amount	50.000	Range	80 - 120	Recovery	=	97.660%
Target Compounds						
2) Dichlorodifluoromethane	1.377	85	50557	37.976	ug/L	99
3) Chloromethane	1.515	50	61418	43.053	ug/L	99
5) Vinyl chloride	1.599	62	64703	38.841	ug/L	99
6) Bromomethane	1.824	94	50286	50.928	ug/L	95
8) Chloroethane	1.891	64	50740	44.414	ug/L	96
9) Trichlorofluoromethane	2.110	101	94449	41.685	ug/L	99
10) 1,1,2-Trichloro-1,2-dichloroethane	2.560	101	59074	38.354	ug/L	98
12) 1,1-Dichloroethene	2.560	96	48137	39.050	ug/L	87
13) Acetone	2.621	43	101446	79.593	ug/L	99
14) Carbon disulfide	2.772	76	80618	34.761	ug/L	100
15) Methyl Acetate	2.936	43	107834	52.499	ug/L	96
16) Methylene chloride	3.030	84	74886	38.084	ug/L	94
17) trans-1,2-Dichloroethene	3.335	96	48479	39.147	ug/L	94
18) Methyl tert-butyl Ether	3.351	73	236915	48.333	ug/L	98
19) 1,1-Dichloroethane	3.853	63	145043	45.977	ug/L	99
20) cis-1,2-Dichloroethene	4.653	96	70217	42.836	ug/L	93
22) 2-Butanone	4.692	43	158554	95.497	ug/L	95
23) Bromochloromethane	4.962	128	35046	41.013	ug/L	87
25) Chloroform	5.075	83	146762	44.063	ug/L	98

Data Path : Z:\voasrv\HPCHEM1\MSVOA_U\Data\VU052824\
 Data File : VU059043.D
 Acq On : 28 May 2024 20:35
 Operator : MD/SY
 Sample : VSTDCCC050EC
 Misc : 5.0mL/MSVOA_U/WATER
 ALS Vial : 27 Sample Multiplier: 1

Instrument :
 MSVOA_U
ClientSampleId :

Quant Time: May 29 02:46:44 2024
 Quant Method : Z:\voasrv\HPCHEM1\MSVOA_U\Method\SFAMULM052324WMA.M
 Quant Title : VOC Analysis
 QLast Update : Wed May 29 02:38:59 2024
 Response via : Initial Calibration

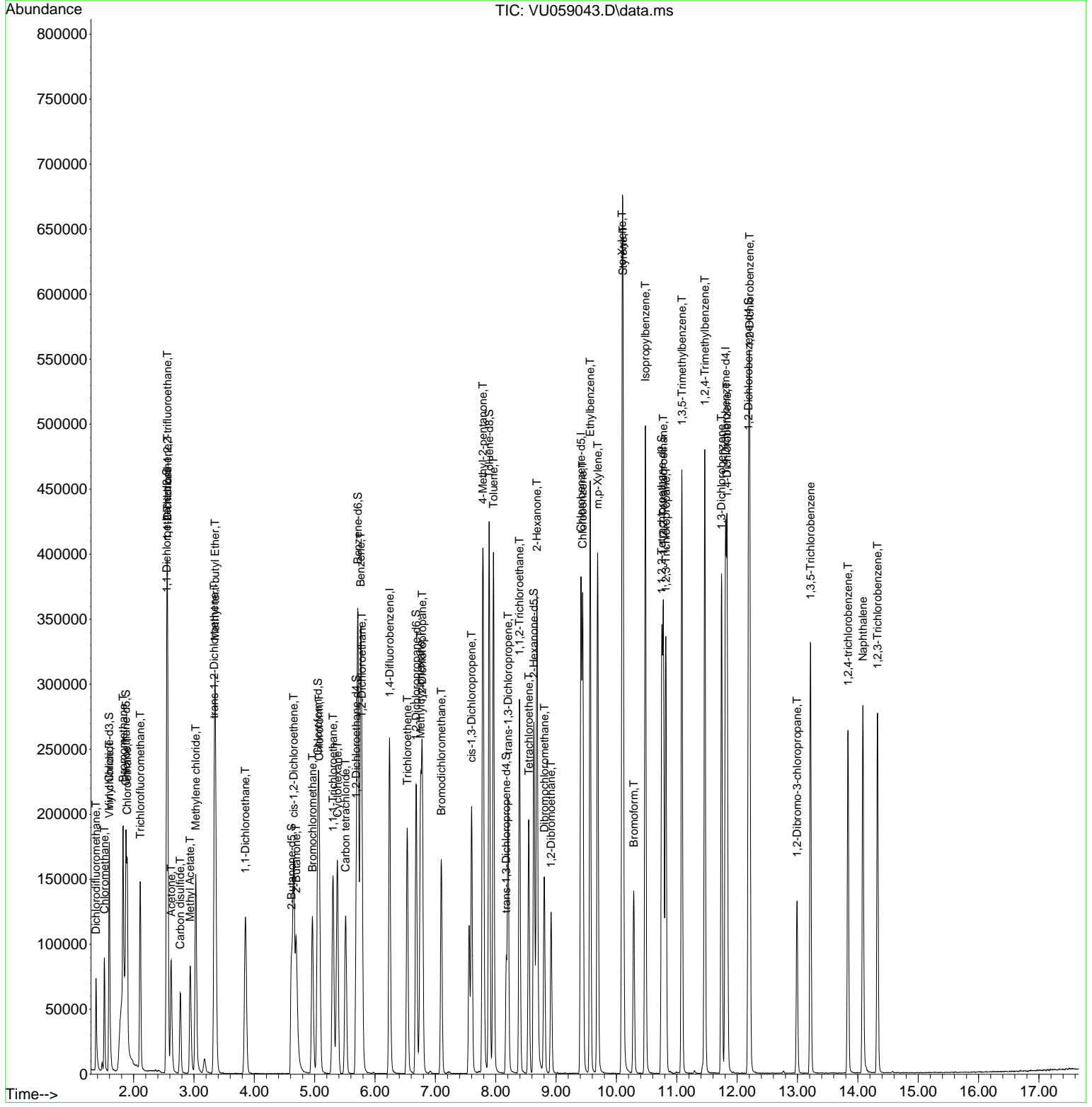
Compound	R. T.	QI on	Response	Conc	Units	Dev(Min)
27) 1,2-Dichloroethane	5.782	62	117189	46.095	ug/L	99
29) Cyclohexane	5.377	56	78604	47.758	ug/L	97
30) 1,1,1-Tri chloroethane	5.303	97	108537	46.766	ug/L	99
31) Carbon tetrachloride	5.512	117	80339	42.857	ug/L	99
33) Benzene	5.763	78	281727	48.462	ug/L	100
34) Trichloroethene	6.534	95	64635	41.891	ug/L	98
35) Methylcyclohexane	6.753	83	73982	40.909	ug/L	91
37) 1,2-Dichloropropane	6.782	63	93233	49.347	ug/L	100
38) Bromodichloromethane	7.097	83	107107	45.616	ug/L	98
39) cis-1,3-Dichloropropene	7.599	75	117519	45.157	ug/L	98
40) 4-Methyl-2-pentanone	7.785	43	315599	117.179	ug/L	96
42) Toluene	7.962	91	285514	45.818	ug/L	99
44) trans-1,3-Dichloropropene	8.203	75	116017	47.093	ug/L	98
45) 1,1,2-Tri chloroethane	8.393	97	88740	47.575	ug/L	98
46) Tetrachloroethene	8.547	164	40090	38.969	ug/L	98
48) 2-Hexanone	8.682	43	258671	116.643	ug/L	96
49) Dibromochloromethane	8.804	129	77472	43.463	ug/L	97
50) 1,2-Dibromoethane	8.917	107	81679	45.826	ug/L	96
51) Chlorobenzene	9.441	112	181026	43.951	ug/L	95
52) Ethyl benzene	9.563	91	307681	45.625	ug/L	100
53) m,p-Xylene	9.689	106	111338	45.963	ug/L	98
54) o-Xylene	10.094	106	114078	47.053	ug/L	99
55) Styrene	10.110	104	207548	47.924	ug/L	99
57) 1,1,2,2-Tetrachloroethane	10.775	83	180905	53.819	ug/L	96
59) Bromoform	10.287	173	61731	47.769	ug/L	95
60) 1,2,3-Tri chloropropane	10.817	75	142860	57.577	ug/L	97
61) Isopropyl benzene	10.480	105	308097	49.484	ug/L	100
62) 1,3,5-Tri methyl benzene	11.084	105	244055	49.755	ug/L	100
63) 1,2,4-Tri methyl benzene	11.463	105	251841	50.910	ug/L	99
64) 1,3-Dichlorobenzene	11.740	146	146969	45.468	ug/L	99
65) 1,4-Dichlorobenzene	11.833	146	149426	45.769	ug/L	97
67) 1,2-Dichlorobenzene	12.206	146	159063	48.382	ug/L	98
68) 1,2-Dibromo-3-chloropropane	12.991	75	36044	53.698	ug/L	92
69) 1,3,5-Tri chlorobenzene	13.216	180	95927	42.134	ug/L	99
70) 1,2,4-tri chlorobenzene	13.836	180	73958	37.715	ug/L	98
71) Naphthalene	14.084	128	224303	39.216	ug/L	100
72) 1,2,3-Tri chlorobenzene	14.325	180	78310	38.987	ug/L	100

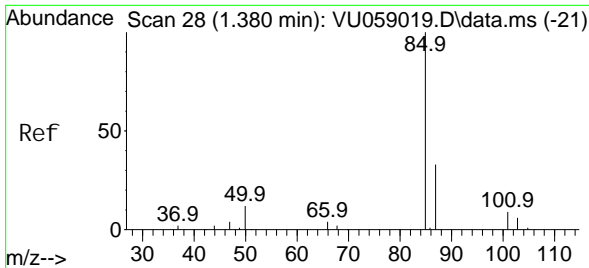
(#) = qualifier out of range (m) = manual integration (+) = signals summed

Data Path : Z:\voasrv\HPCHEM1\MSVOA_U\Data\VU052824\
 Data File : VU059043.D
 Acq On : 28 May 2024 20:35
 Operator : MD/SY
 Sample : VSTDCCC050EC
 Misc : 5.0mL/MSVOA_U/WATER
 ALS Vial : 27 Sample Multiplier: 1

Instrument :
 MSVOA_U
 ClientSampleId :

Quant Time: May 29 02:46:44 2024
 Quant Method : Z:\voasrv\HPCHEM1\MSVOA_U\Method\SFAMULM052324WMA.M
 Quant Title : VOC Analysis
 QLast Update : Wed May 29 02:38:59 2024
 Response via : Initial Calibration

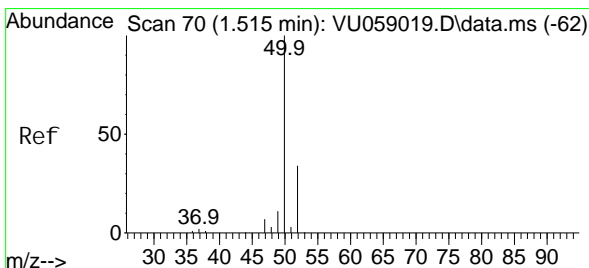
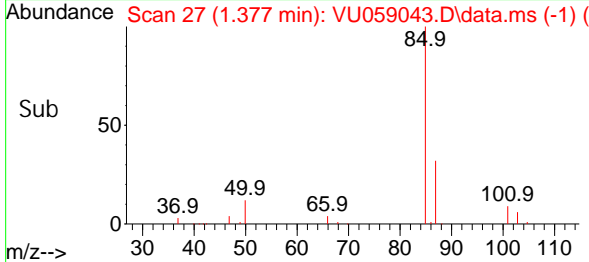
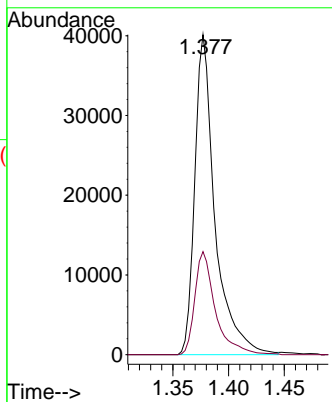
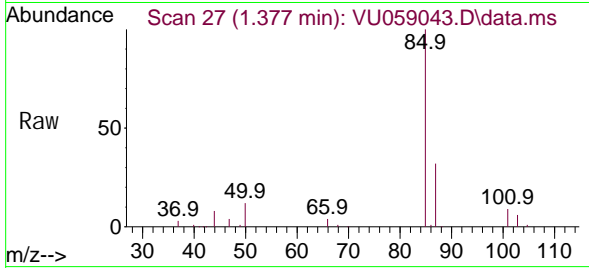




#2
 Di chl orodi fluoromethane
 Concen: 37.976 ug/L
 RT: 1.377 min Scan# 2
 Delta R.T. -0.003 min
 Lab File: VU059043.D
 Acq: 28 May 2024 20:35

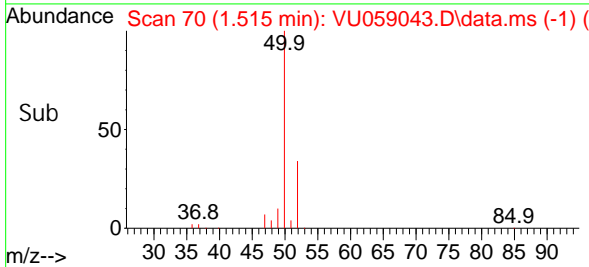
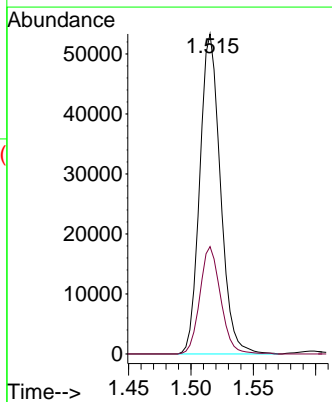
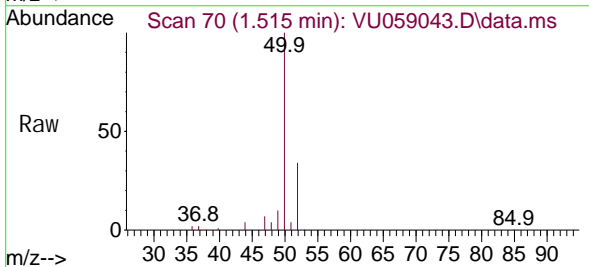
Instrument :
 MSVOA_U
 ClientSampleId :

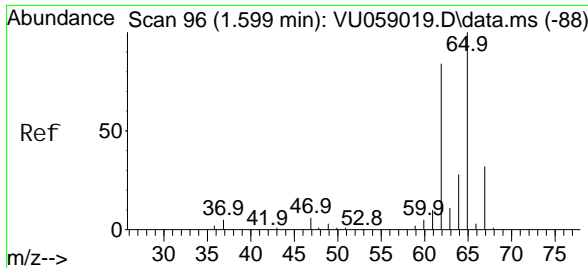
Tgt Ion: 85 Resp: 50557
 Ion Ratio Lower Upper
 85 100
 87 32.8 25.7 38.5



#3
 Chloromethane
 Concen: 43.053 ug/L
 RT: 1.515 min Scan# 70
 Delta R.T. 0.000 min
 Lab File: VU059043.D
 Acq: 28 May 2024 20:35

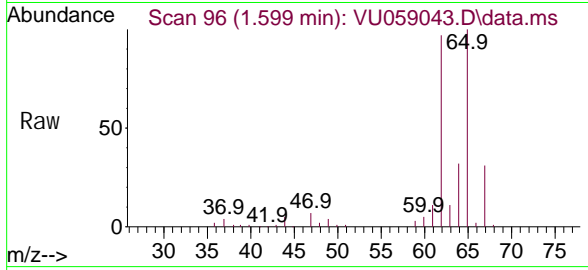
Tgt Ion: 50 Resp: 61418
 Ion Ratio Lower Upper
 50 100
 52 33.5 23.9 44.3



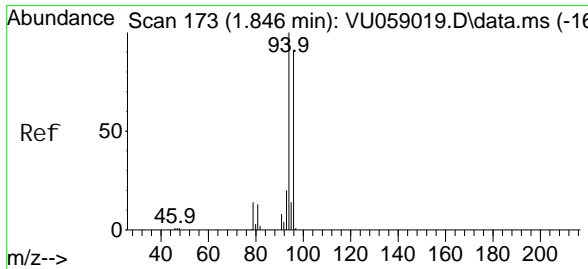
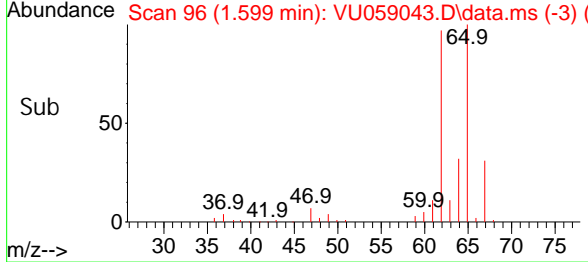
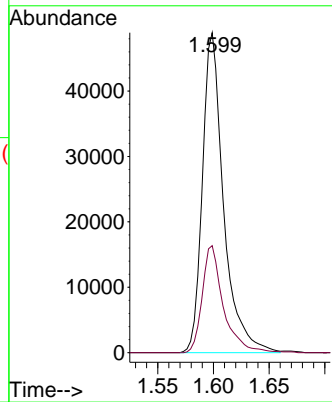


#5
 Vinyl chloride
 Concen: 38.841 ug/L
 RT: 1.599 min Scan# 90
 Delta R.T. 0.000 min
 Lab File: VU059043.D
 Acq: 28 May 2024 20:35

Instrument : MSVOA_U
 ClientSampleId :

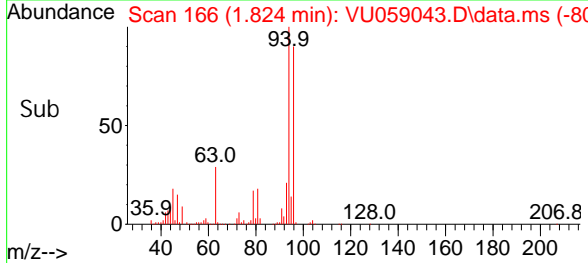
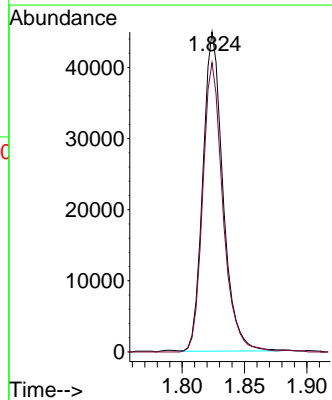
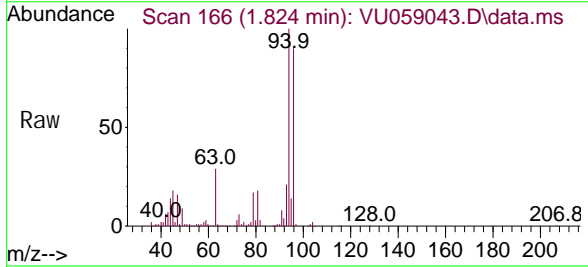


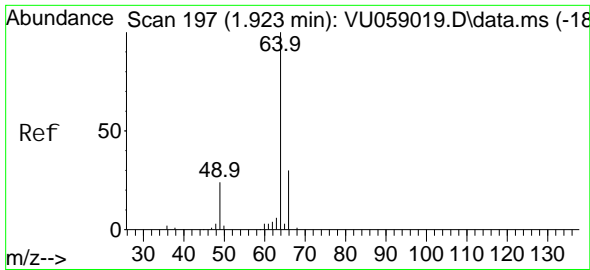
Tgt Ion: 62 Resp: 64703
 Ion Ratio Lower Upper
 62 100
 64 33.5 23.7 43.9



#6
 Bromomethane
 Concen: 50.928 ug/L
 RT: 1.824 min Scan# 166
 Delta R.T. -0.022 min
 Lab File: VU059043.D
 Acq: 28 May 2024 20:35

Tgt Ion: 94 Resp: 50286
 Ion Ratio Lower Upper
 94 100
 96 90.4 66.6 123.6

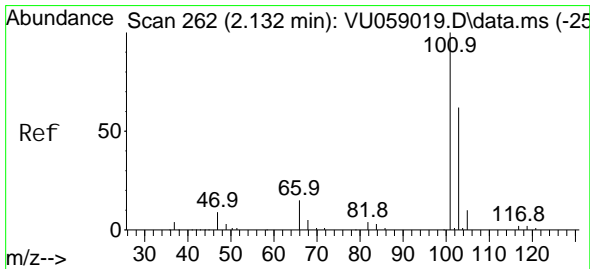
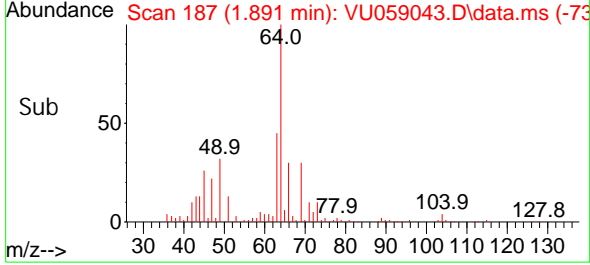
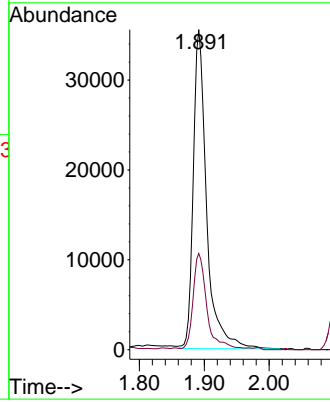
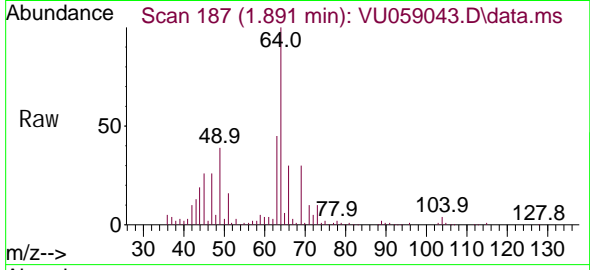




#8
 Chloroethane
 Concen: 44.414 ug/L
 RT: 1.891 min Scan# 18
 Delta R.T. -0.032 min
 Lab File: VU059043.D
 Acq: 28 May 2024 20:35

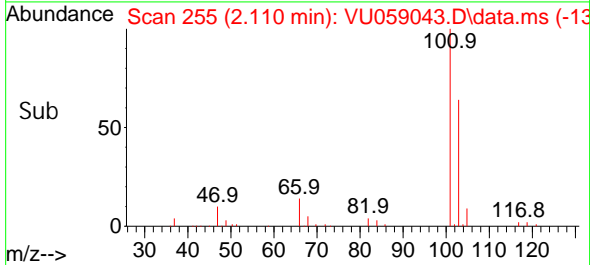
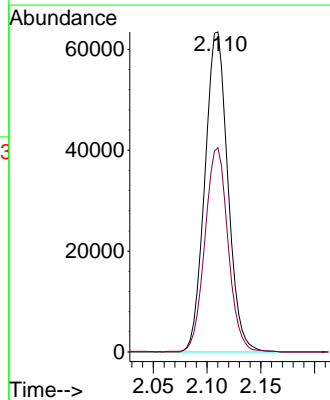
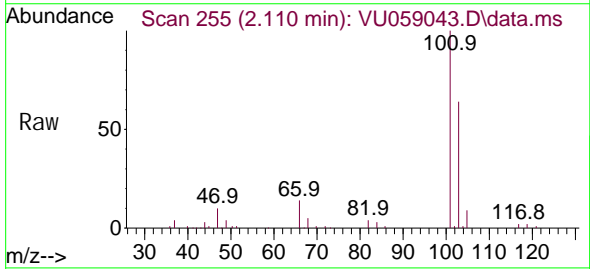
Instrument :
 MSVOA_U
 ClientSampleId :

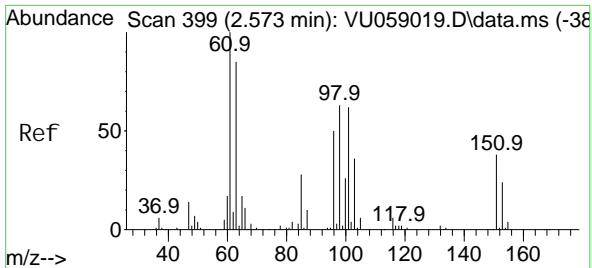
Tgt Ion: 64 Resp: 50740
 Ion Ratio Lower Upper
 64 100
 66 30.0 22.7 42.1



#9
 Trichlorofluoromethane
 Concen: 41.685 ug/L
 RT: 2.110 min Scan# 255
 Delta R.T. -0.022 min
 Lab File: VU059043.D
 Acq: 28 May 2024 20:35

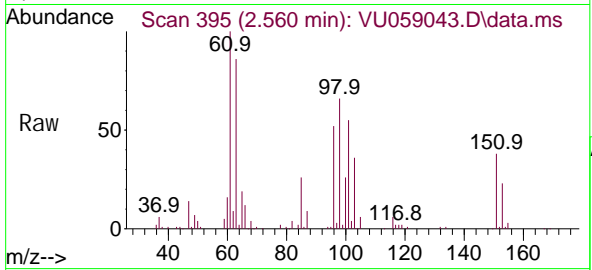
Tgt Ion: 101 Resp: 94449
 Ion Ratio Lower Upper
 101 100
 103 63.8 51.6 77.4



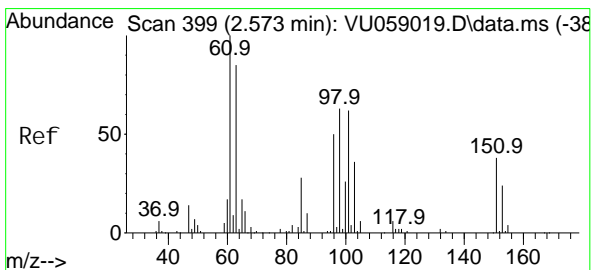
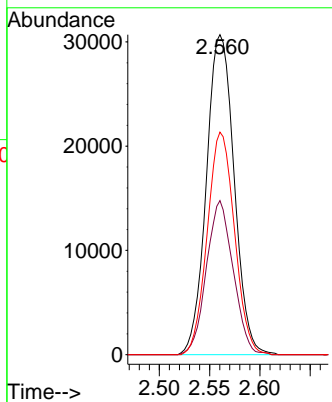
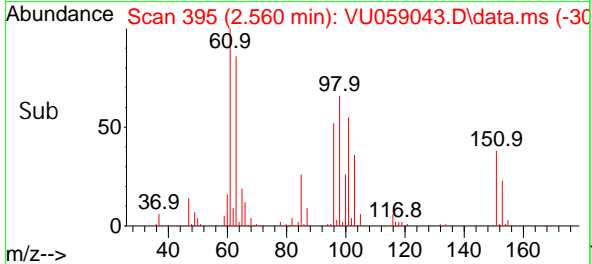


#10
 1,1,2-Tri chloro-1,2,2-tri fluoroethane
 Concen: 38.354 ug/L
 RT: 2.560 min Scan# 395
 Delta R.T. -0.013 min
 Lab File: VU059043.D
 Acq: 28 May 2024 20:35

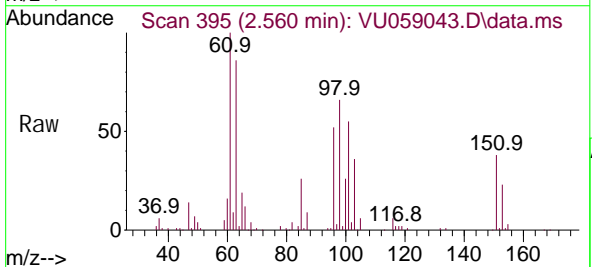
Instrument : MSVOA_U
 ClientSampleId :



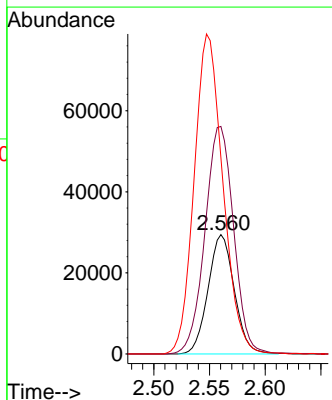
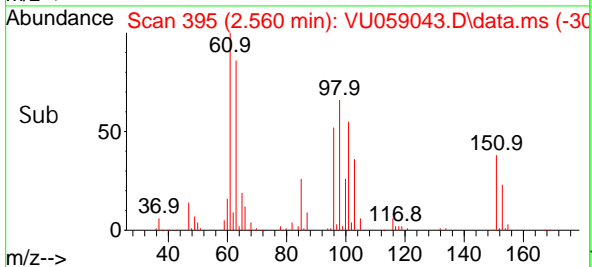
Tgt Ion: 101 Resp: 59074
 Ion Ratio Lower Upper
 101 100
 85 46.4 34.9 52.3
 151 68.1 54.5 81.7

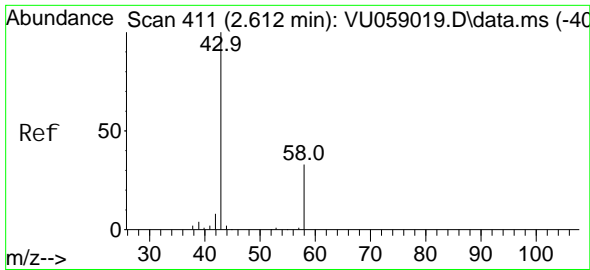


#12
 1,1-Di chloroethene
 Concen: 39.050 ug/L
 RT: 2.560 min Scan# 395
 Delta R.T. -0.013 min
 Lab File: VU059043.D
 Acq: 28 May 2024 20:35



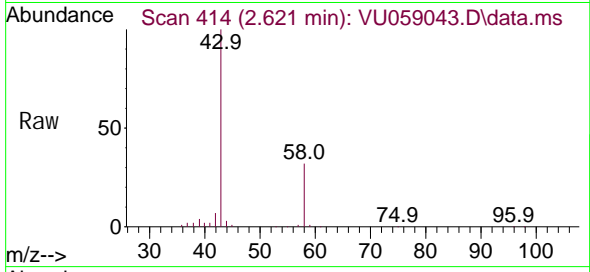
Tgt Ion: 96 Resp: 48137
 Ion Ratio Lower Upper
 96 100
 61 190.8 122.2 227.0
 63 164.4 102.8 190.8



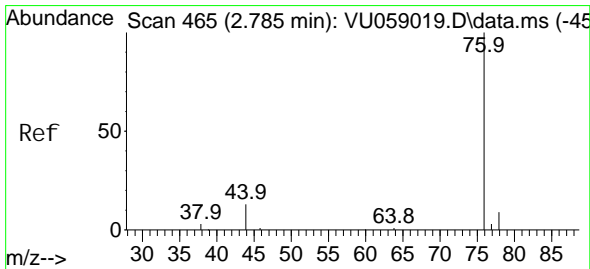
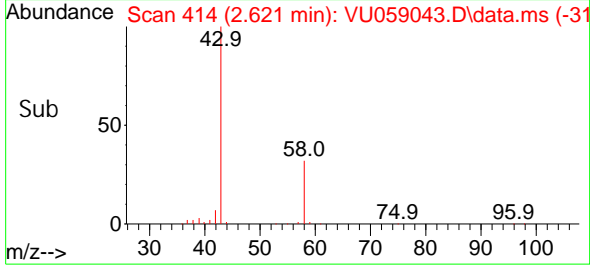
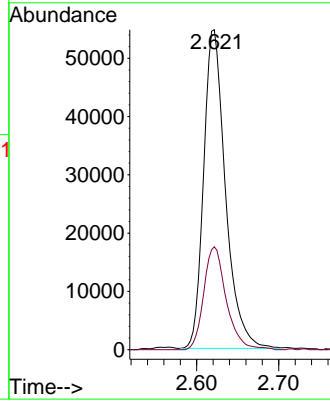


#13
 Acetone
 Concen: 79.593 ug/L
 RT: 2.621 min Scan# 411
 Delta R.T. 0.010 min
 Lab File: VU059043.D
 Acq: 28 May 2024 20:35

Instrument : MSVOA_U
 ClientSampleId :

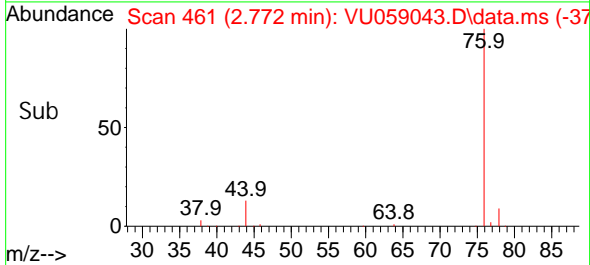
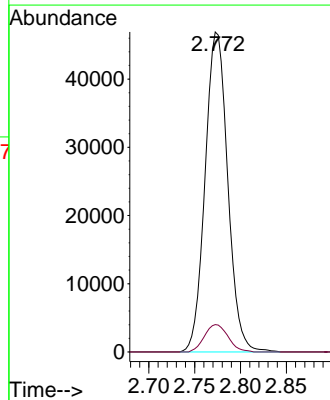
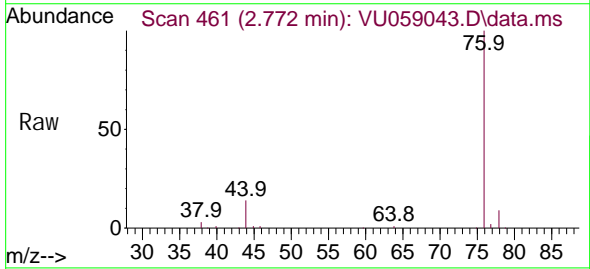


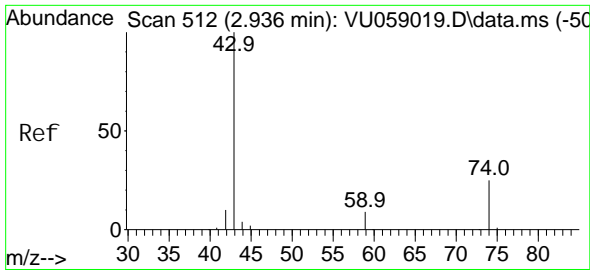
Tgt Ion: 43 Resp: 101446
 Ion Ratio Lower Upper
 43 100
 58 33.3 0.0 67.2



#14
 Carbon di sul fi de
 Concen: 34.761 ug/L
 RT: 2.772 min Scan# 461
 Delta R.T. -0.013 min
 Lab File: VU059043.D
 Acq: 28 May 2024 20:35

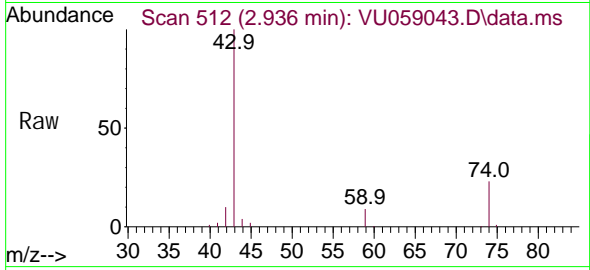
Tgt Ion: 76 Resp: 80618
 Ion Ratio Lower Upper
 76 100
 78 8.8 7.1 10.7



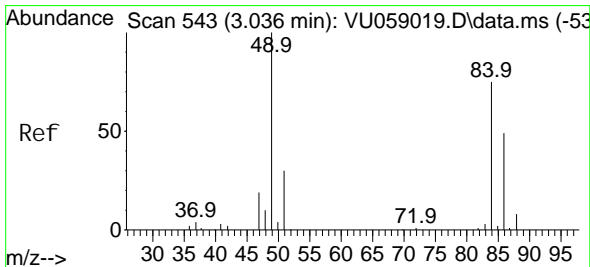
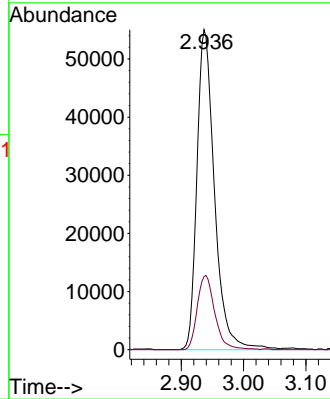
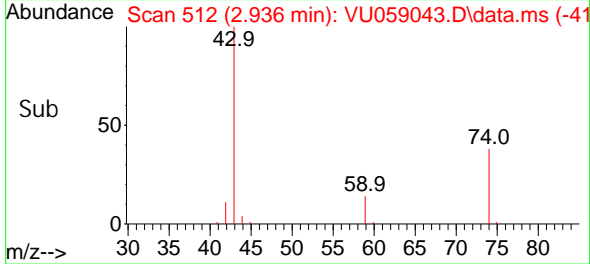


#15
Methyl Acetate
Concen: 52.499 ug/L
RT: 2.936 min Scan# 511
Delta R.T. 0.000 min
Lab File: VU059043.D
Acq: 28 May 2024 20:35

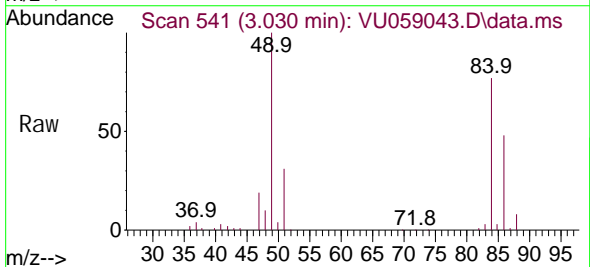
Instrument : MSVOA_U
Client Sampled :



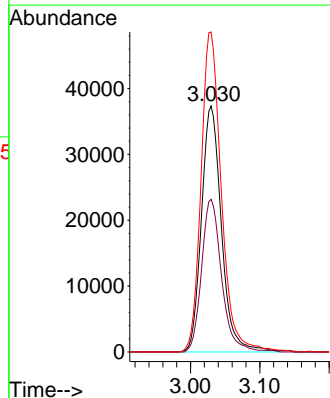
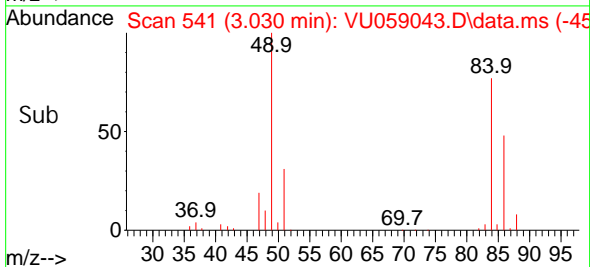
Tgt Ion: 43 Resp: 107834
Ion Ratio Lower Upper
43 100
74 23.0 19.8 29.8

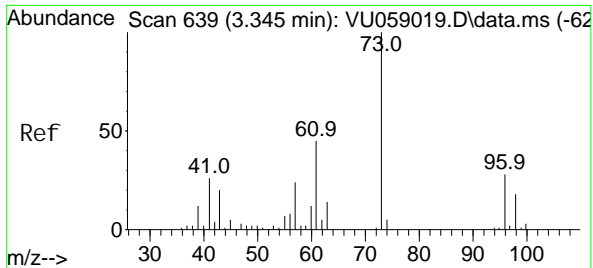


#16
Methylene chloride
Concen: 38.084 ug/L
RT: 3.030 min Scan# 541
Delta R.T. -0.006 min
Lab File: VU059043.D
Acq: 28 May 2024 20:35



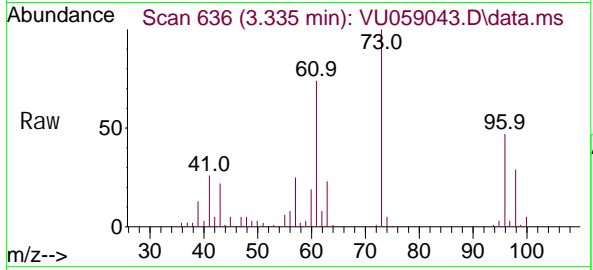
Tgt Ion: 84 Resp: 74886
Ion Ratio Lower Upper
84 100
86 62.1 44.9 83.5
49 130.1 85.4 158.6



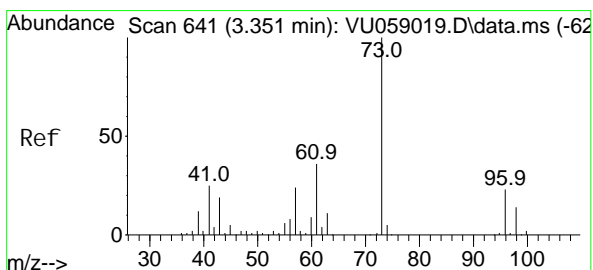
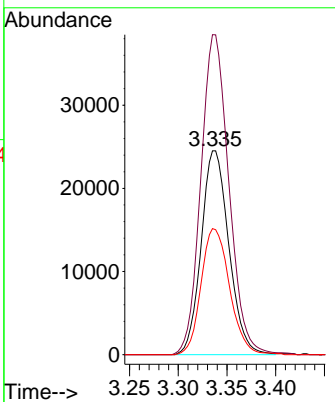
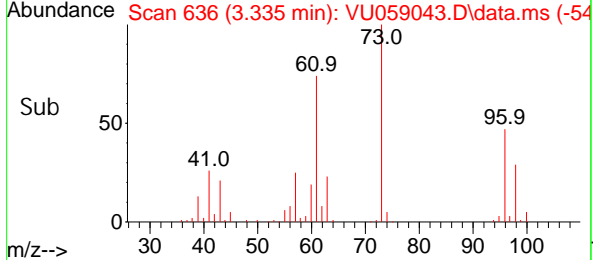


#17
 trans-1, 2-Di chloroethene
 Concen: 39.147 ug/L
 RT: 3.335 min Scan# 61
 Delta R.T. -0.010 min
 Lab File: VU059043.D
 Acq: 28 May 2024 20:35

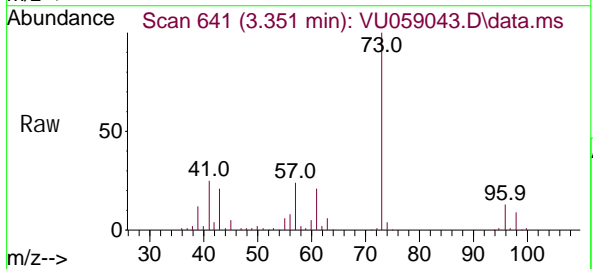
Instrument : MSVOA_U
 ClientSampleId :



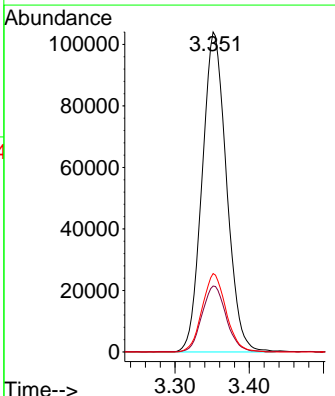
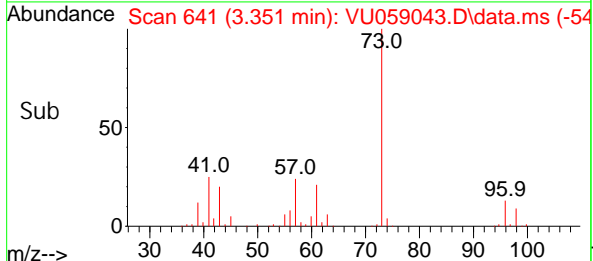
Tgt Ion: 96 Resp: 48479
 Ion Ratio Lower Upper
 96 100
 61 157.0 103.5 192.1
 98 61.8 44.9 83.3

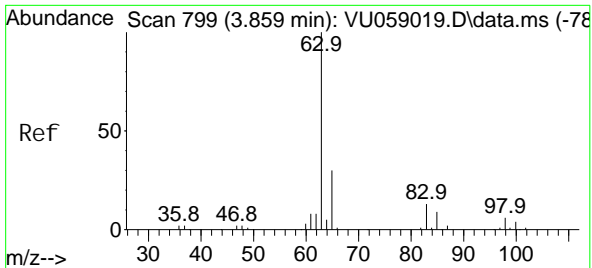


#18
 Methyl tert-butyl Ether
 Concen: 48.333 ug/L
 RT: 3.351 min Scan# 641
 Delta R.T. 0.000 min
 Lab File: VU059043.D
 Acq: 28 May 2024 20:35



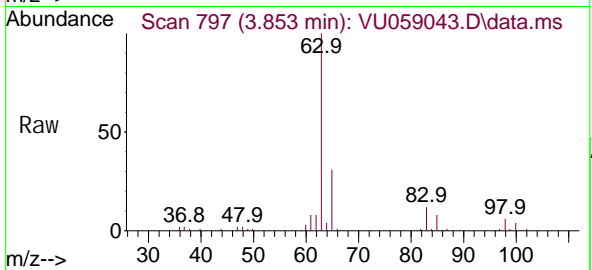
Tgt Ion: 73 Resp: 236915
 Ion Ratio Lower Upper
 73 100
 43 20.1 15.4 23.2
 57 24.0 18.6 27.8



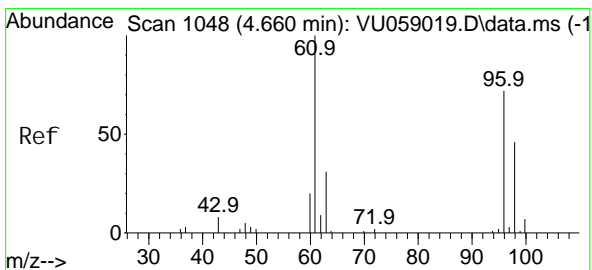
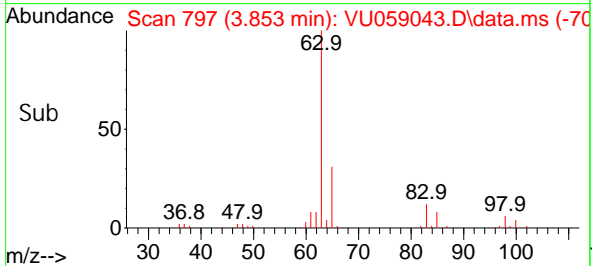
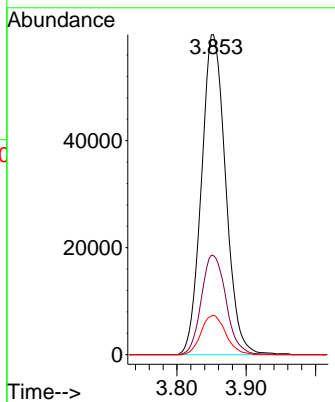


#19
 1,1-Dichloroethane
 Concen: 45.977 ug/L
 RT: 3.853 min Scan# 797
 Delta R.T. -0.006 min
 Lab File: VU059043.D
 Acq: 28 May 2024 20:35

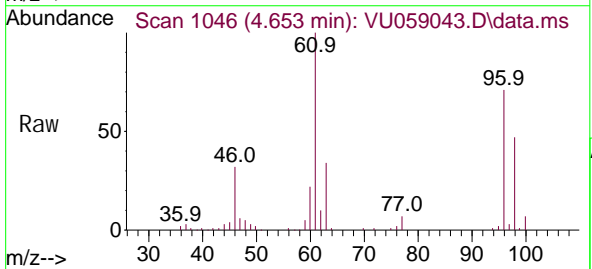
Instrument : MSVOA_U
 ClientSampleId :



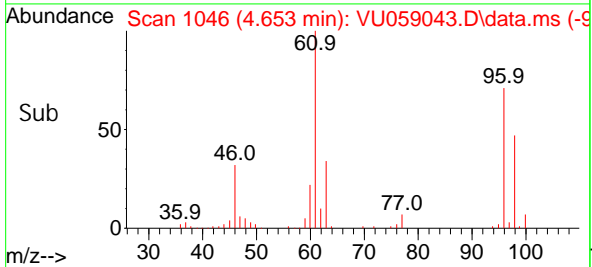
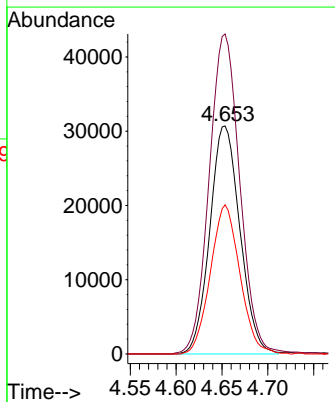
Tgt Ion: 63 Resp: 145043
 Ion Ratio Lower Upper
 63 100
 65 31.0 22.3 41.3
 83 12.3 8.5 15.9

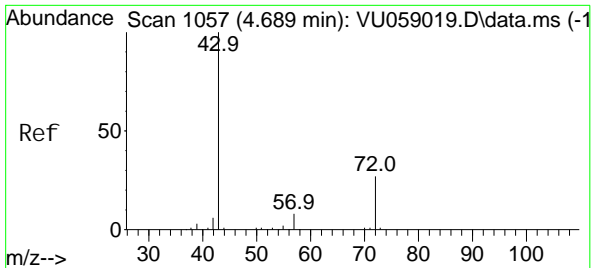


#20
 cis-1,2-Dichloroethene
 Concen: 42.836 ug/L
 RT: 4.653 min Scan# 1046
 Delta R.T. -0.006 min
 Lab File: VU059043.D
 Acq: 28 May 2024 20:35



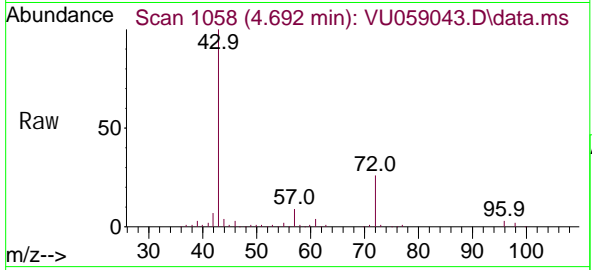
Tgt Ion: 96 Resp: 70217
 Ion Ratio Lower Upper
 96 100
 61 140.4 91.1 169.3
 98 65.4 44.4 82.4



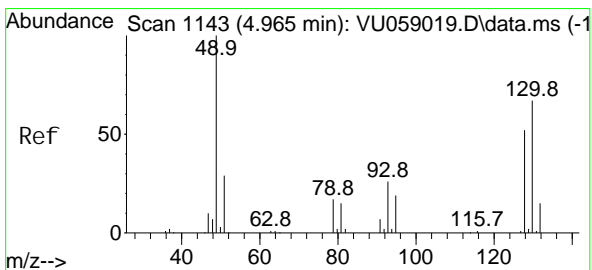
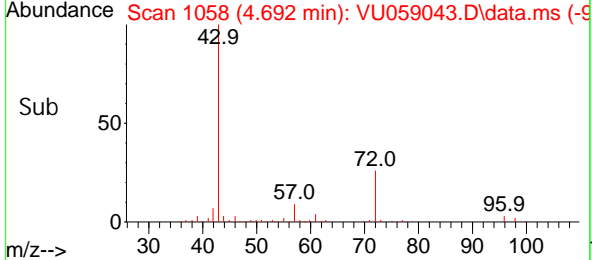
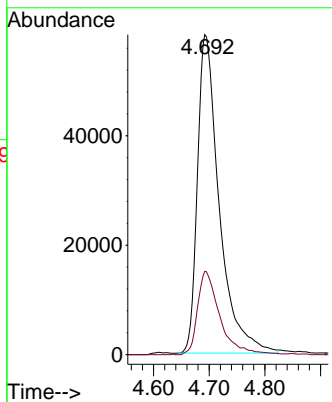


#22
 2-Butanone
 Concen: 95.497 ug/L
 RT: 4.692 min Scan# 1058
 Delta R.T. 0.003 min
 Lab File: VU059043.D
 Acq: 28 May 2024 20:35

Instrument : MSVOA_U
 ClientSampleId :

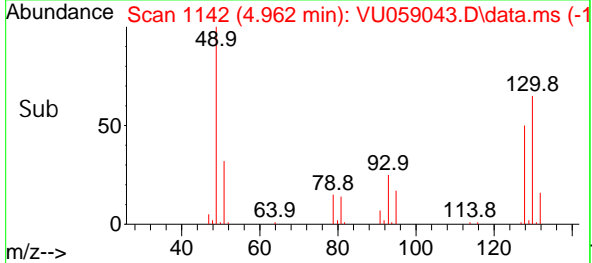
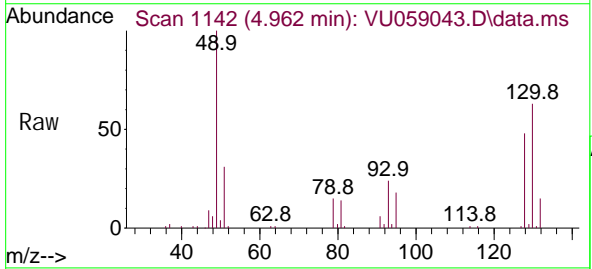
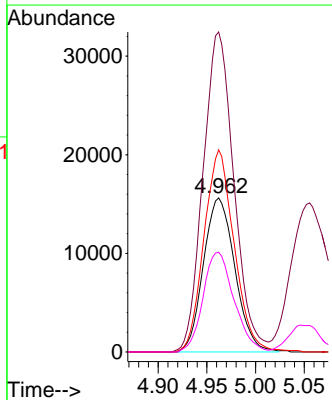


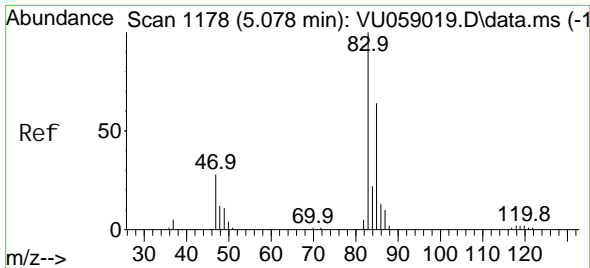
Tgt Ion: 43 Resp: 158554
 Ion Ratio Lower Upper
 43 100
 72 25.2 13.9 41.7



#23
 Bromochloromethane
 Concen: 41.013 ug/L
 RT: 4.962 min Scan# 1142
 Delta R.T. -0.003 min
 Lab File: VU059043.D
 Acq: 28 May 2024 20:35

Tgt Ion: 128 Resp: 35046
 Ion Ratio Lower Upper
 128 100
 49 207.8 123.8 229.8
 130 131.3 90.6 168.2
 51 64.7 43.8 65.6

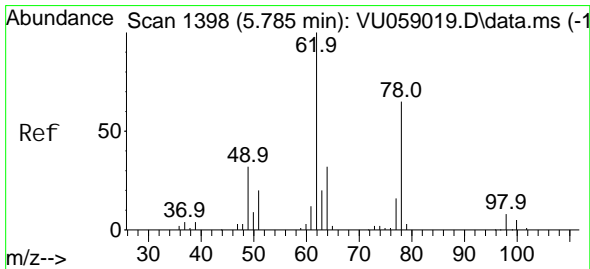
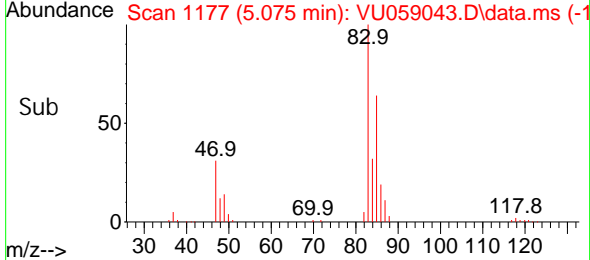
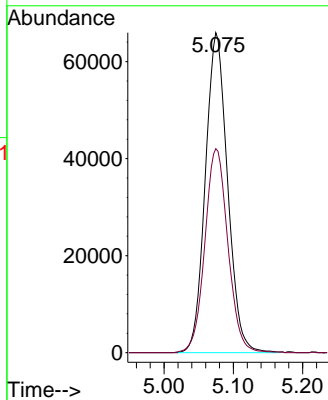
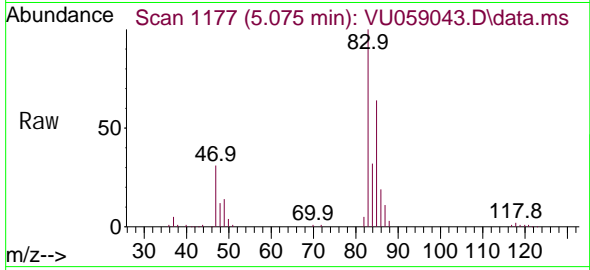




#25
 Chloroform
 Concen: 44.063 ug/L
 RT: 5.075 min Scan# 1177
 Delta R.T. -0.003 min
 Lab File: VU059043.D
 Acq: 28 May 2024 20:35

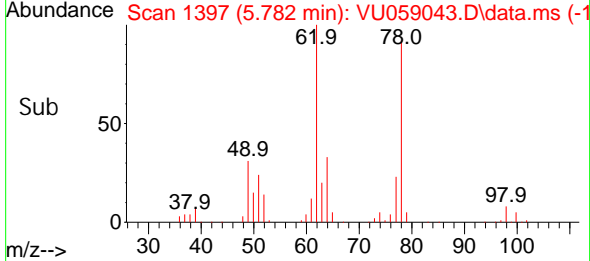
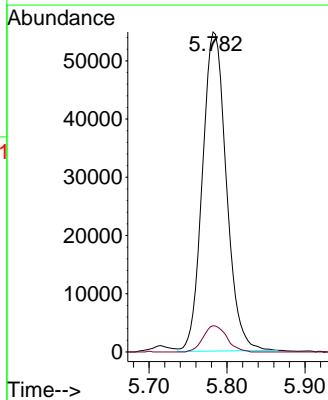
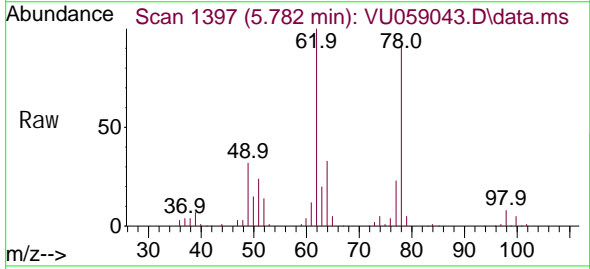
Instrument : MSVOA_U
 ClientSampleId :

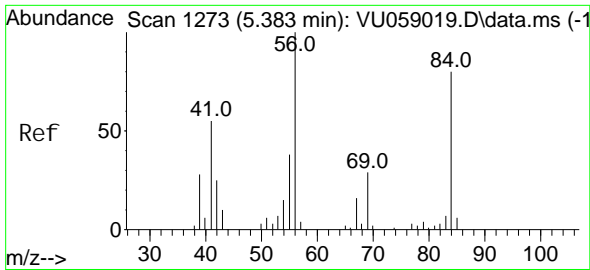
Tgt Ion: 83 Resp: 146762
 Ion Ratio Lower Upper
 83 100
 85 63.8 43.8 81.3



#27
 1,2-Dichloroethane
 Concen: 46.095 ug/L
 RT: 5.782 min Scan# 1397
 Delta R.T. -0.003 min
 Lab File: VU059043.D
 Acq: 28 May 2024 20:35

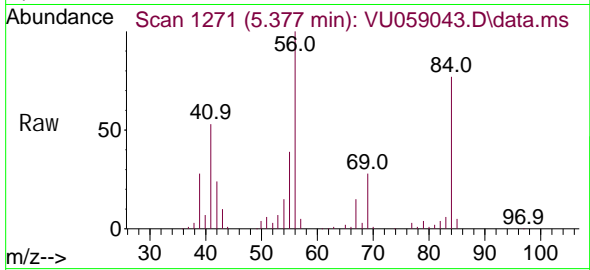
Tgt Ion: 62 Resp: 117189
 Ion Ratio Lower Upper
 62 100
 98 8.2 7.0 10.4





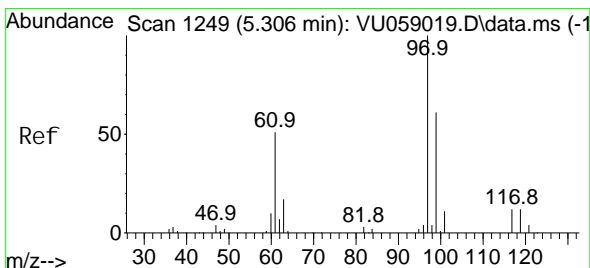
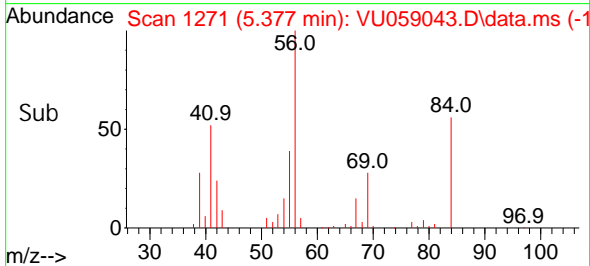
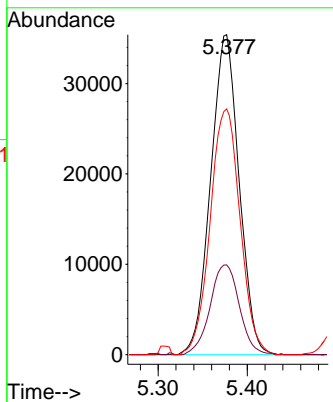
#29
 Cycl hexane
 Concen: 47.758 ug/L
 RT: 5.377 min Scan# 1271
 Delta R.T. -0.006 min
 Lab File: VU059043.D
 Acq: 28 May 2024 20:35

Instrument :
 MSVOA_U
 ClientSampleId :



Tgt Ion: 56 Resp: 78604

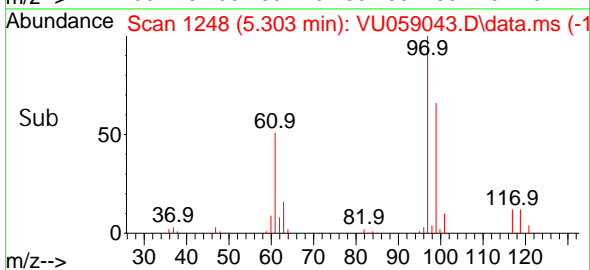
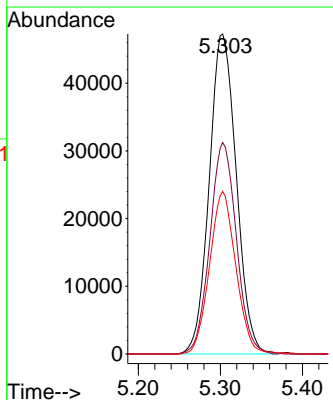
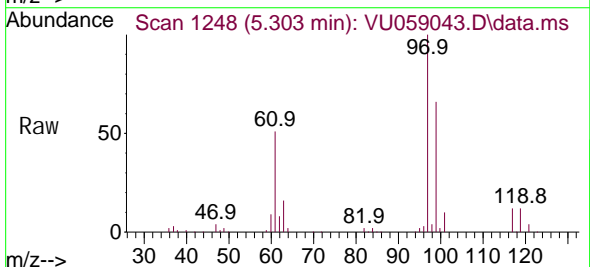
Ion	Ratio	Lower	Upper
56	100		
69	28.8	24.3	36.5
84	80.6	66.7	100.1

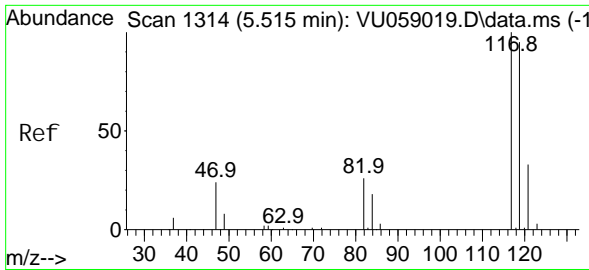


#30
 1,1,1-Tri chloroethane
 Concen: 46.766 ug/L
 RT: 5.303 min Scan# 1248
 Delta R.T. -0.003 min
 Lab File: VU059043.D
 Acq: 28 May 2024 20:35

Tgt Ion: 97 Resp: 108537

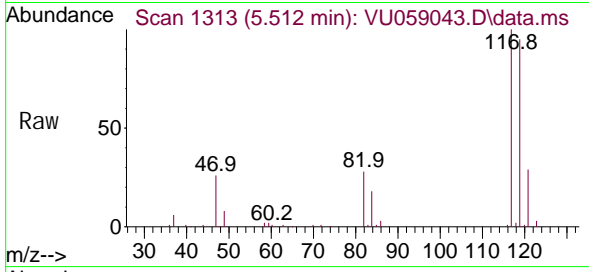
Ion	Ratio	Lower	Upper
97	100		
99	64.7	51.8	77.8
61	49.4	38.9	58.3



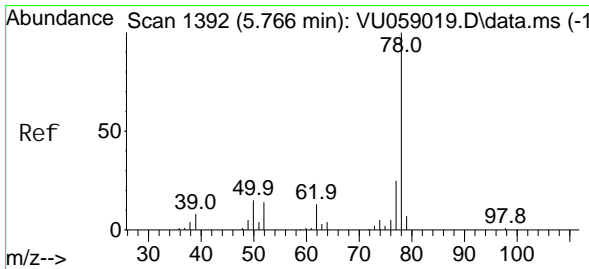
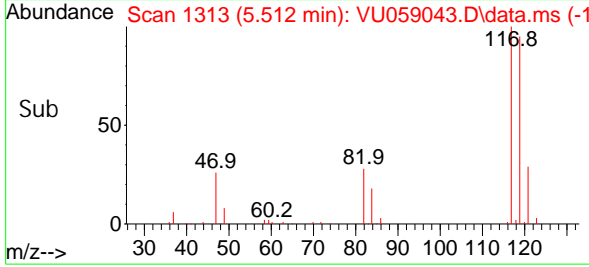
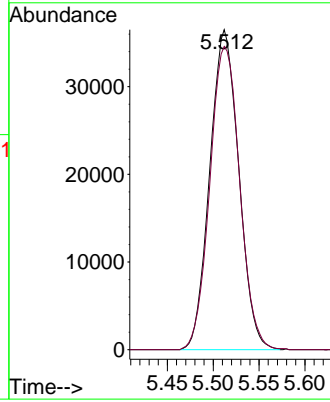


#31
 Carbon tetrachloride
 Concen: 42.857 ug/L
 RT: 5.512 min Scan# 111
 Delta R.T. -0.003 min
 Lab File: VU059043.D
 Acq: 28 May 2024 20:35

Instrument :
 MSVOA_U
 ClientSampleId :

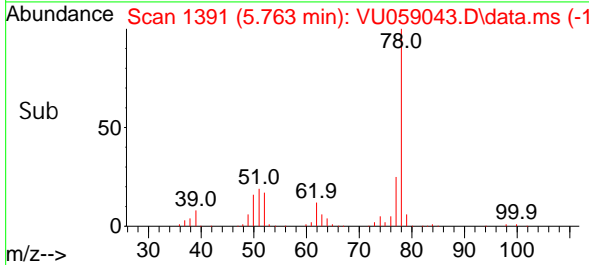
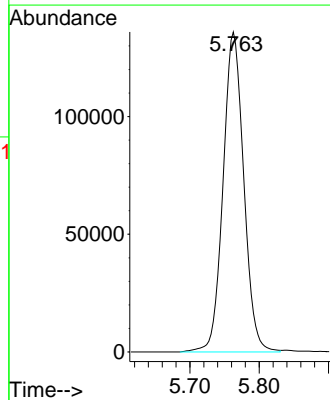
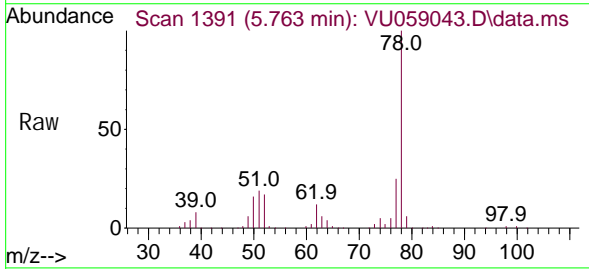


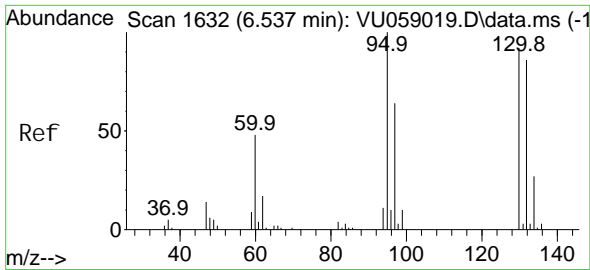
Tgt Ion: 117 Resp: 80339
 Ion Ratio Lower Upper
 117 100
 119 97.4 77.4 116.0



#33
 Benzene
 Concen: 48.462 ug/L
 RT: 5.763 min Scan# 1391
 Delta R.T. -0.003 min
 Lab File: VU059043.D
 Acq: 28 May 2024 20:35

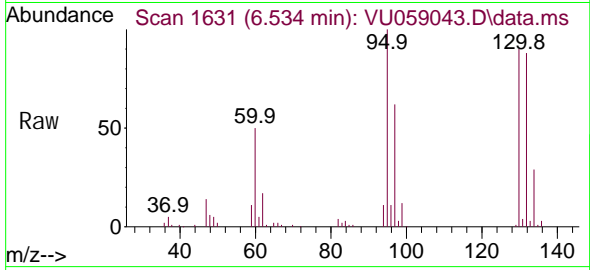
Tgt Ion: 78 Resp: 281727



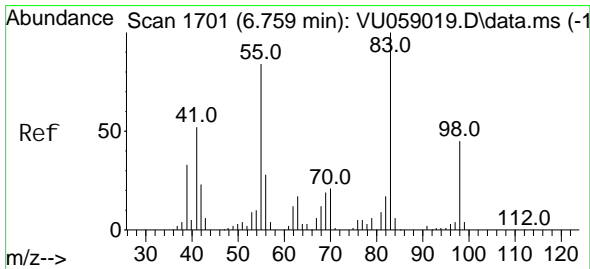
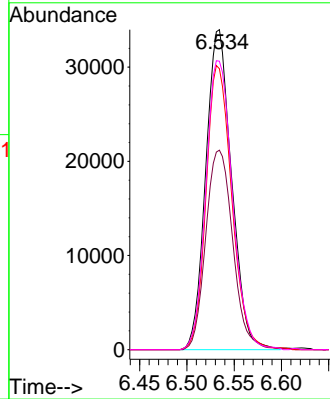
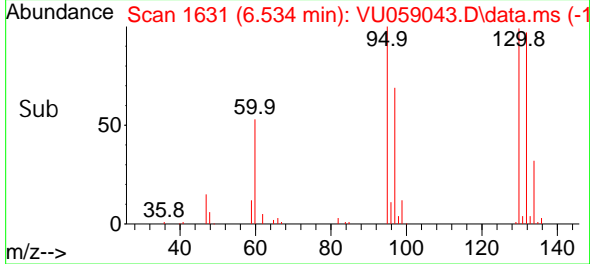


#34
 Trichloroethene
 Concen: 41.891 ug/L
 RT: 6.534 min Scan# 1699
 Delta R.T. -0.003 min
 Lab File: VU059043.D
 Acq: 28 May 2024 20:35

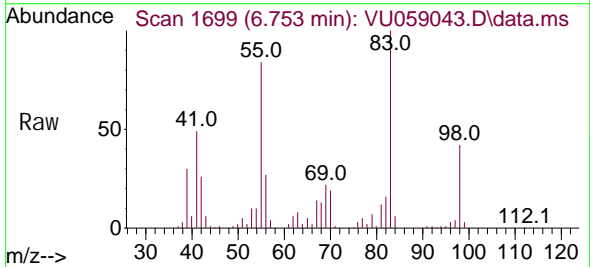
Instrument : MSVOA_U
 ClientSampleId :



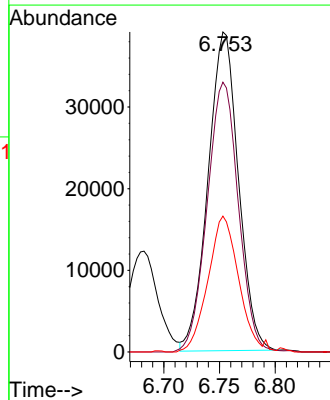
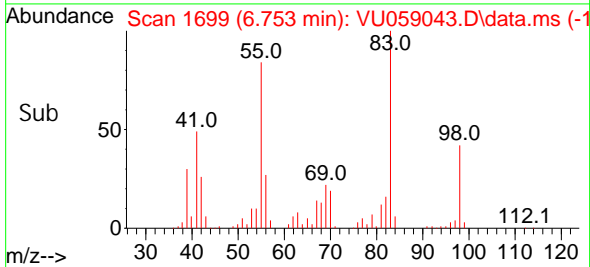
Tgt Ion: 95 Resp: 64635
 Ion Ratio Lower Upper
 95 100
 97 62.4 45.9 85.3
 132 87.8 60.5 112.5
 130 90.2 64.0 118.8

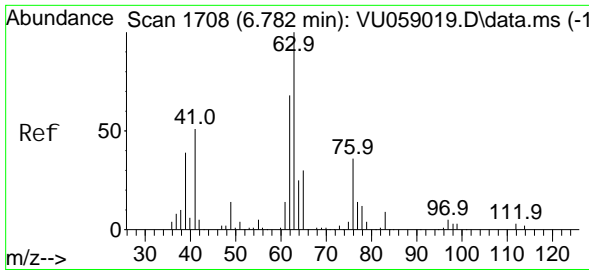


#35
 Methyl cycl ohexane
 Concen: 40.909 ug/L
 RT: 6.753 min Scan# 1699
 Delta R.T. -0.006 min
 Lab File: VU059043.D
 Acq: 28 May 2024 20:35



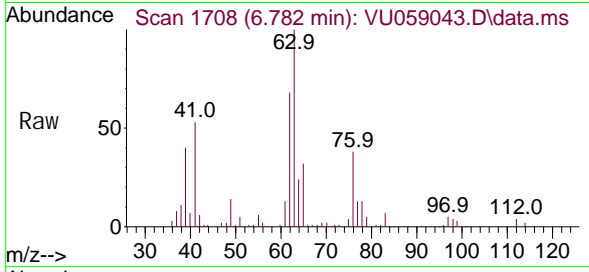
Tgt Ion: 83 Resp: 73982
 Ion Ratio Lower Upper
 83 100
 55 87.1 61.5 92.3
 98 42.7 36.2 54.2



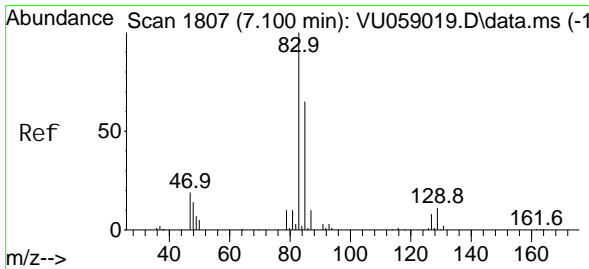
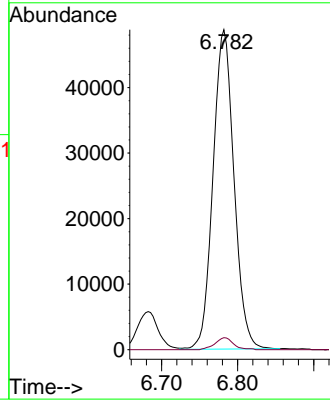
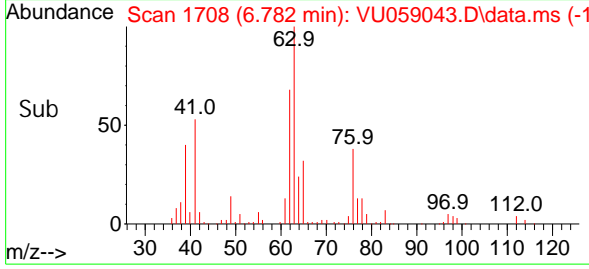


#37
 1, 2-Di chl oropropane
 Concen: 49.347 ug/L
 RT: 6.782 min Scan# 1708
 Delta R.T. 0.000 min
 Lab File: VU059043.D
 Acq: 28 May 2024 20:35

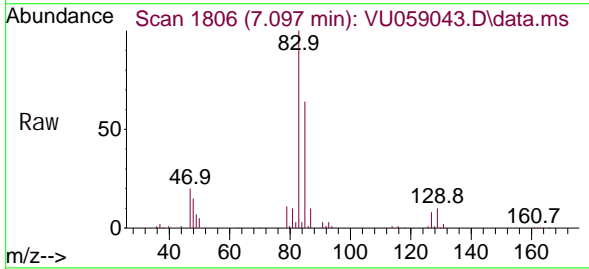
Instrument : MSVOA_U
 ClientSampleId :



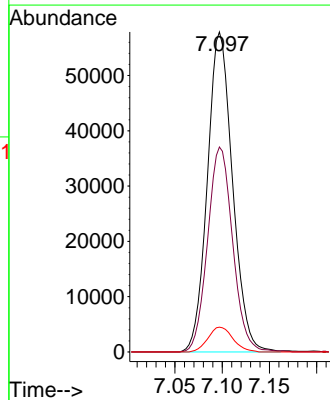
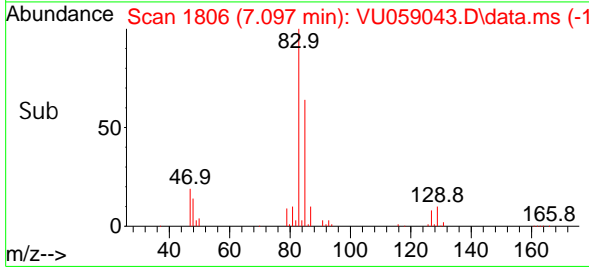
Tgt Ion: 63 Resp: 93233
 Ion Ratio Lower Upper
 63 100
 112 3.2 2.5 3.7

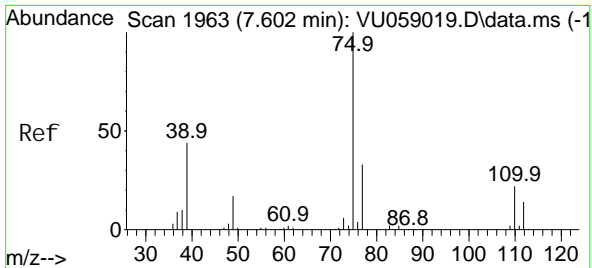


#38
 Bromodi chl oromethane
 Concen: 45.616 ug/L
 RT: 7.097 min Scan# 1806
 Delta R.T. -0.003 min
 Lab File: VU059043.D
 Acq: 28 May 2024 20:35



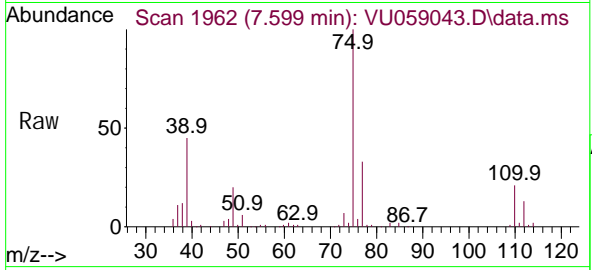
Tgt Ion: 83 Resp: 107107
 Ion Ratio Lower Upper
 83 100
 85 64.0 43.5 80.9
 127 7.8 5.8 8.6



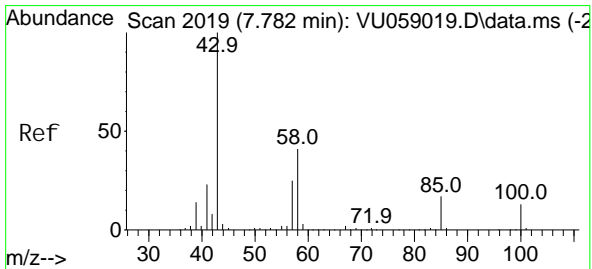
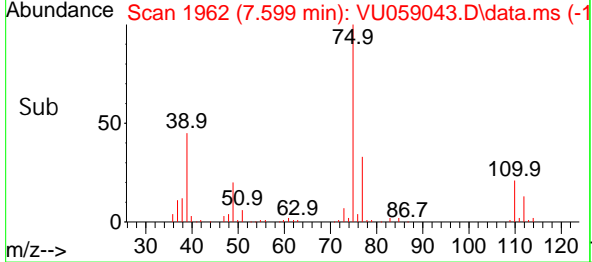
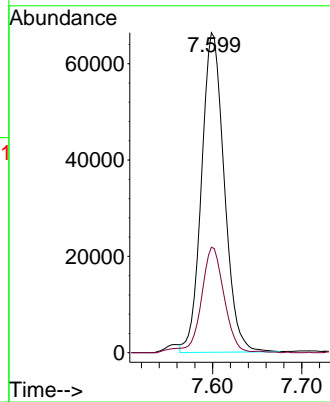


#39
 cis-1,3-Dichloropropene
 Concen: 45.157 ug/L
 RT: 7.599 min Scan# 1962
 Delta R.T. -0.003 min
 Lab File: VU059043.D
 Acq: 28 May 2024 20:35

Instrument : MSVOA_U
 ClientSampleId :

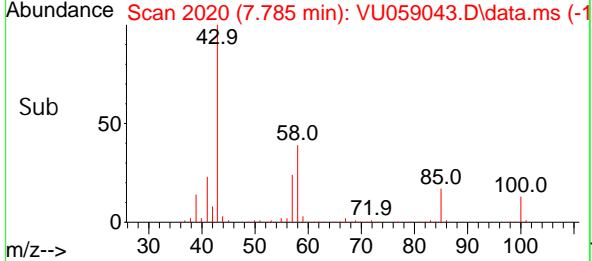
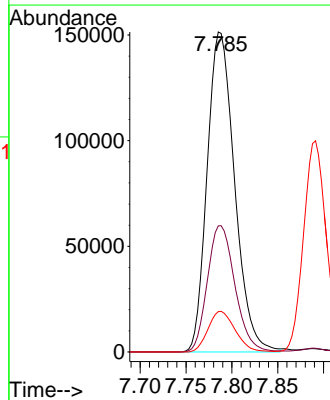
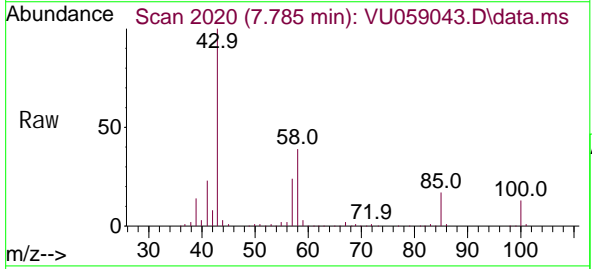


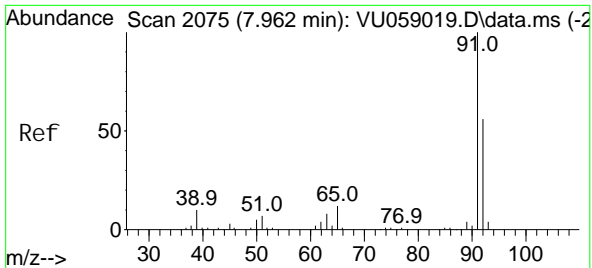
Tgt Ion: 75 Resp: 117519
 Ion Ratio Lower Upper
 75 100
 77 33.0 22.5 41.7



#40
 4-Methyl-2-pentanone
 Concen: 117.179 ug/L
 RT: 7.785 min Scan# 2020
 Delta R.T. 0.003 min
 Lab File: VU059043.D
 Acq: 28 May 2024 20:35

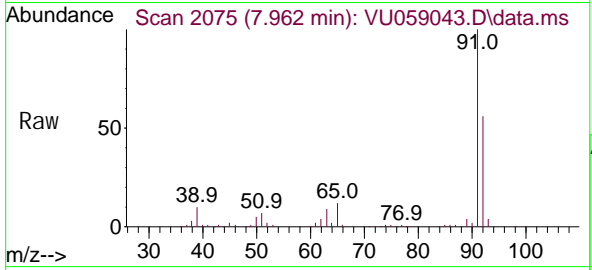
Tgt Ion: 43 Resp: 315599
 Ion Ratio Lower Upper
 43 100
 58 39.6 33.5 50.3
 100 12.6 11.8 17.8



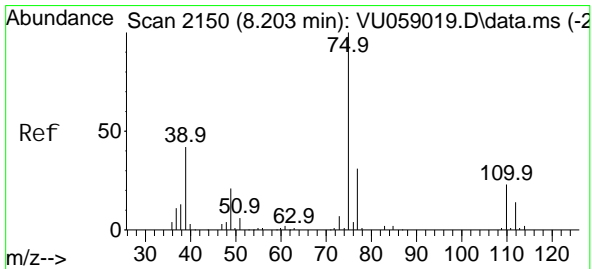
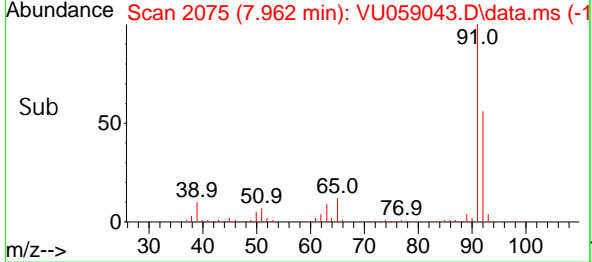
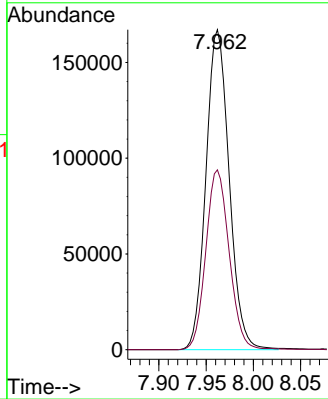


#42
 Tol uene
 Concen: 45.818 ug/L
 RT: 7.962 min Scan# 2075
 Delta R.T. 0.000 min
 Lab File: VU059043.D
 Acq: 28 May 2024 20:35

Instrument : MSVOA_U
 ClientSampleId :

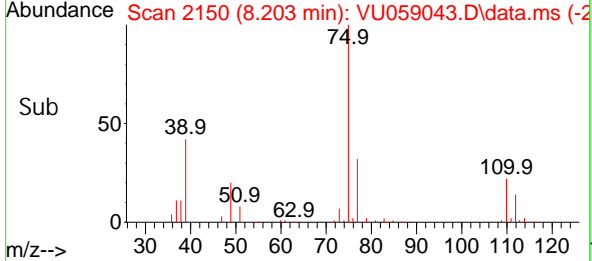
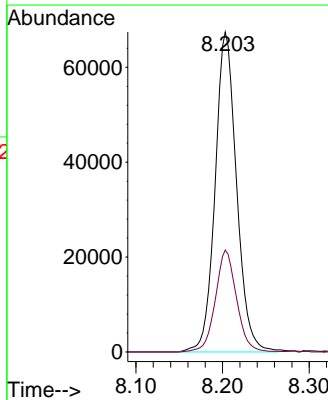
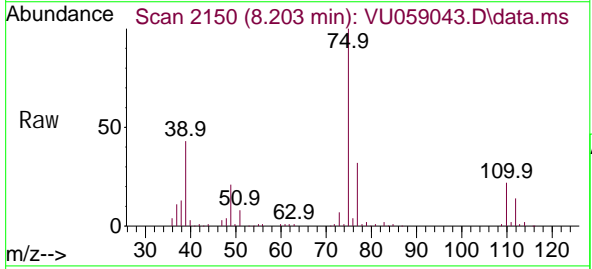


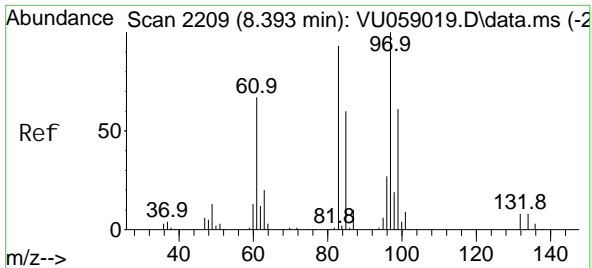
Tgt Ion: 91 Resp: 285514
 Ion Ratio Lower Upper
 91 100
 92 56.2 38.7 71.9



#44
 trans-1,3-Di chl oroprene
 Concen: 47.093 ug/L
 RT: 8.203 min Scan# 2150
 Delta R.T. 0.000 min
 Lab File: VU059043.D
 Acq: 28 May 2024 20:35

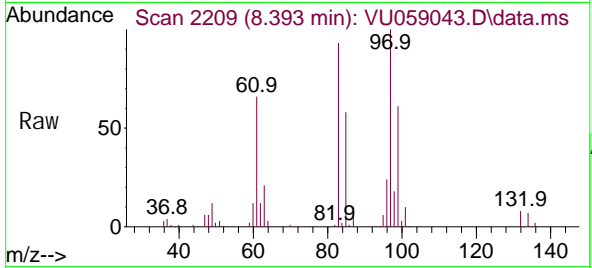
Tgt Ion: 75 Resp: 116017
 Ion Ratio Lower Upper
 75 100
 77 31.8 23.0 42.8





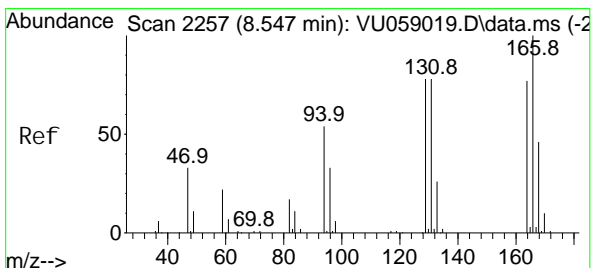
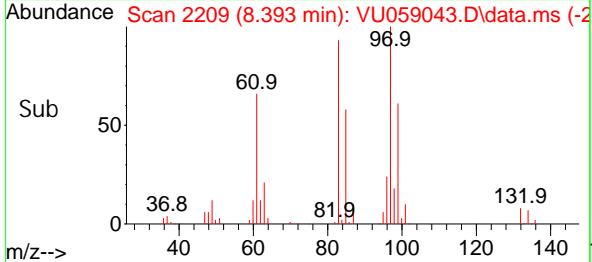
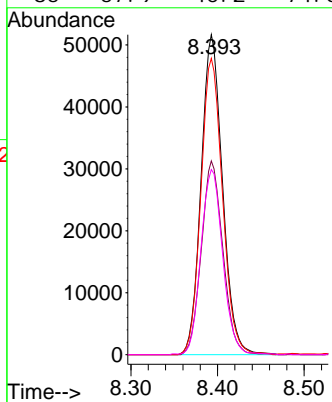
#45
 1, 1, 2-Tri chloroethane
 Concen: 47.575 ug/L
 RT: 8.393 min Scan# 2209
 Delta R.T. 0.000 min
 Lab File: VU059043.D
 Acq: 28 May 2024 20:35

Instrument : MSVOA_U
 ClientSampleId :

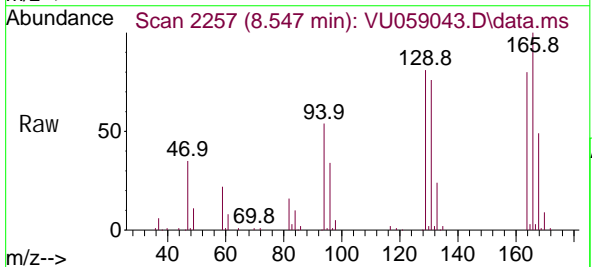


Tgt Ion: 97 Resp: 88740

Ion	Ratio	Lower	Upper
97	100		
99	60.6	42.6	79.2
83	92.6	62.2	115.6
85	57.9	40.2	74.6

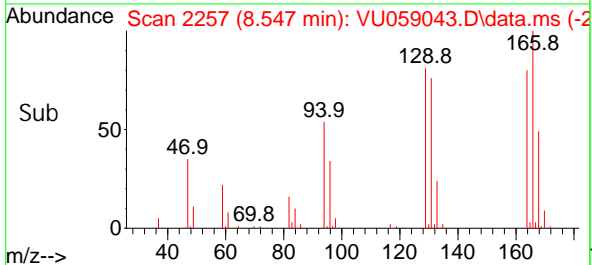
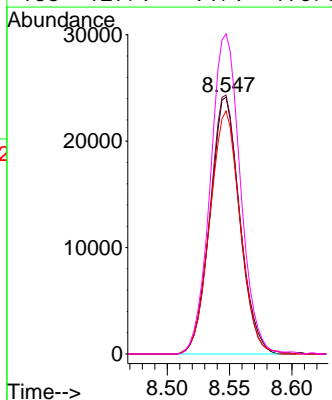


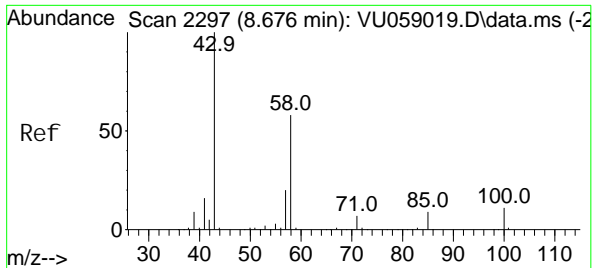
#46
 Tetrachloroethene
 Concen: 38.969 ug/L
 RT: 8.547 min Scan# 2257
 Delta R.T. 0.000 min
 Lab File: VU059043.D
 Acq: 28 May 2024 20:35



Tgt Ion: 164 Resp: 40090

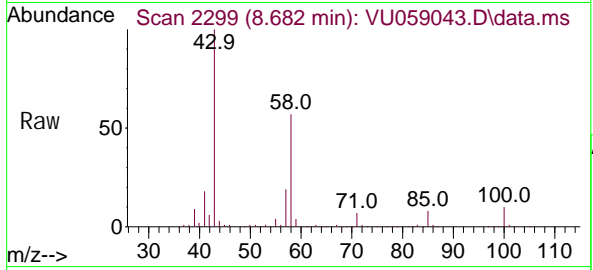
Ion	Ratio	Lower	Upper
164	100		
129	100.8	70.6	131.0
131	94.7	69.2	128.6
166	127.9	91.9	170.7





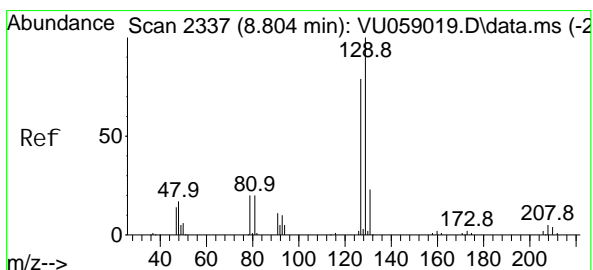
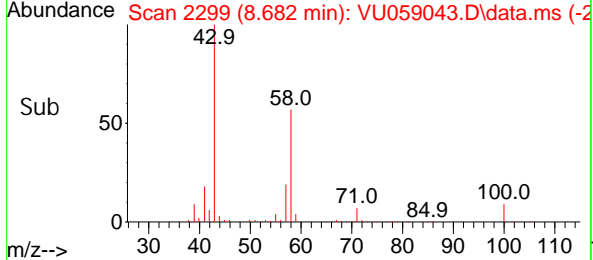
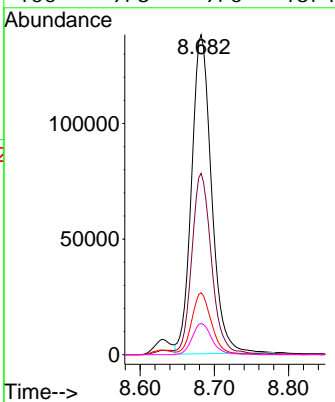
#48
 2-Hexanone
 Concen: 116.643 ug/L
 RT: 8.682 min Scan# 2299
 Delta R.T. 0.007 min
 Lab File: VU059043.D
 Acq: 28 May 2024 20:35

Instrument : MSVOA_U
 ClientSampleId :

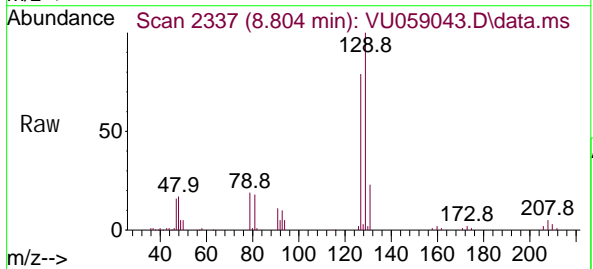


Tgt Ion: 43 Resp: 258671

Ion	Ratio	Lower	Upper
43	100		
58	55.6	47.8	71.6
57	19.0	15.7	23.5
100	9.8	9.0	13.4

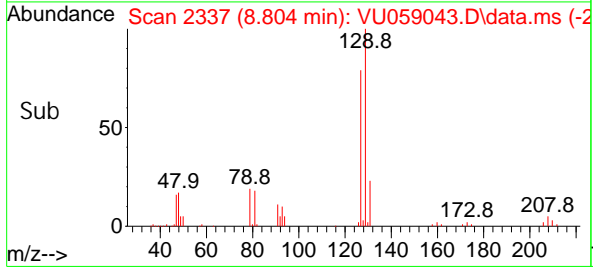
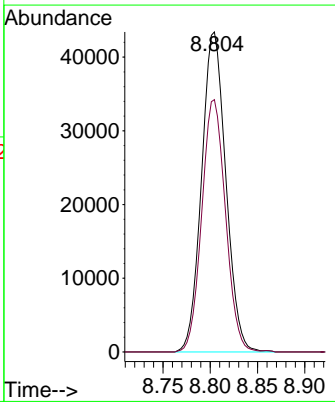


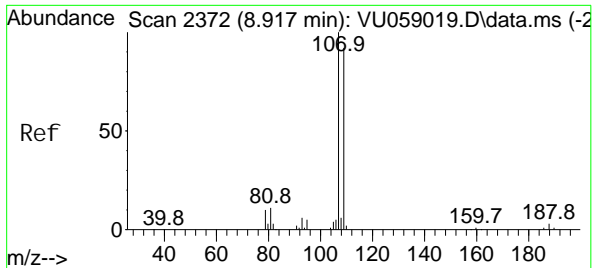
#49
 Di bromochloromethane
 Concen: 43.463 ug/L
 RT: 8.804 min Scan# 2337
 Delta R.T. 0.000 min
 Lab File: VU059043.D
 Acq: 28 May 2024 20:35



Tgt Ion: 129 Resp: 77472

Ion	Ratio	Lower	Upper
129	100		
127	78.8	56.8	105.4

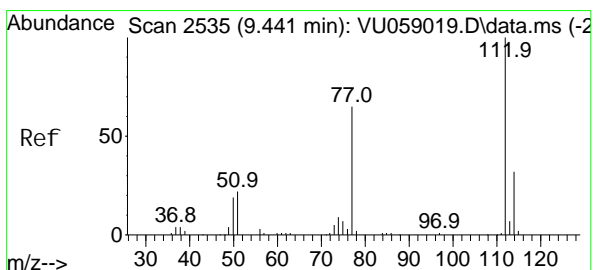
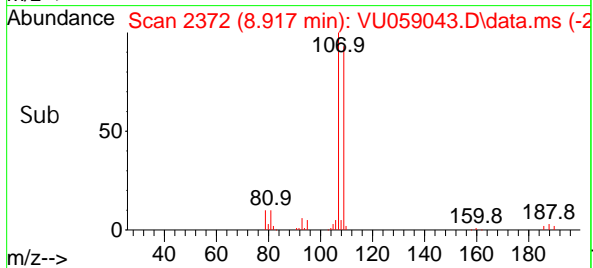
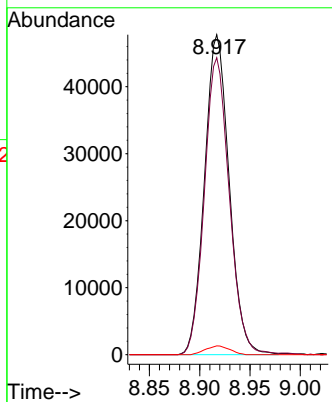
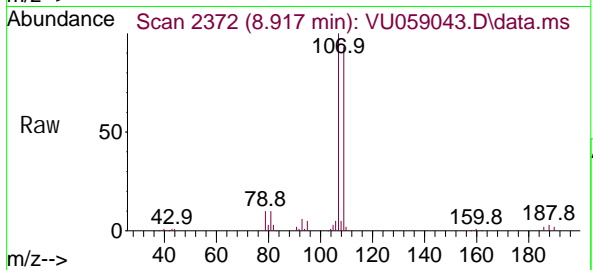




#50
 1, 2-Di bromoethane
 Concen: 45.826 ug/L
 RT: 8.917 min Scan# 2372
 Delta R.T. 0.000 min
 Lab File: VU059043.D
 Acq: 28 May 2024 20:35

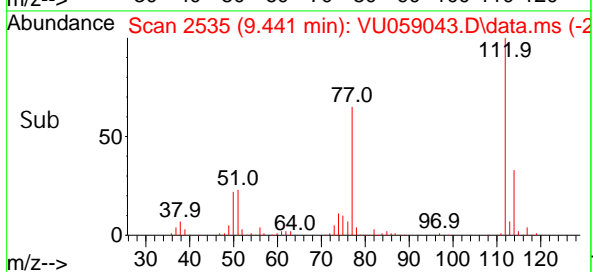
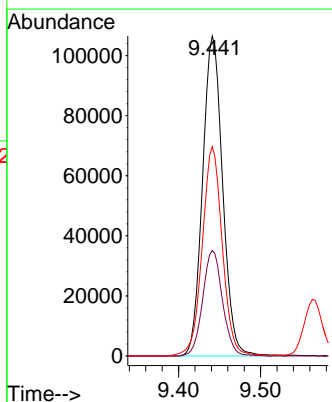
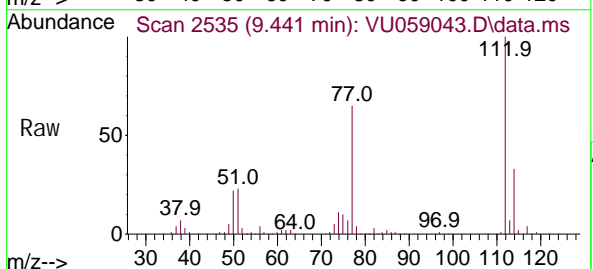
Instrument : MSVOA_U
 ClientSampleId :

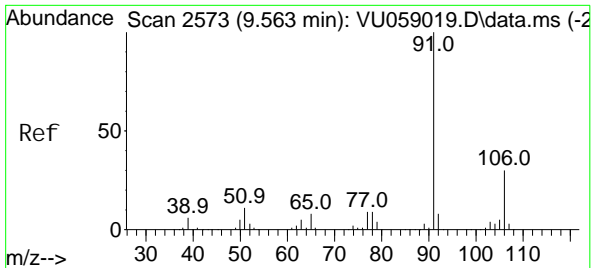
Tgt Ion: 107 Resp: 81679
 Ion Ratio Lower Upper
 107 100
 109 92.8 68.0 126.2
 188 2.7 2.6 3.8



#51
 Chlorobenzene
 Concen: 43.951 ug/L
 RT: 9.441 min Scan# 2535
 Delta R.T. 0.000 min
 Lab File: VU059043.D
 Acq: 28 May 2024 20:35

Tgt Ion: 112 Resp: 181026
 Ion Ratio Lower Upper
 112 100
 114 33.0 21.8 40.6
 77 65.4 48.8 73.2

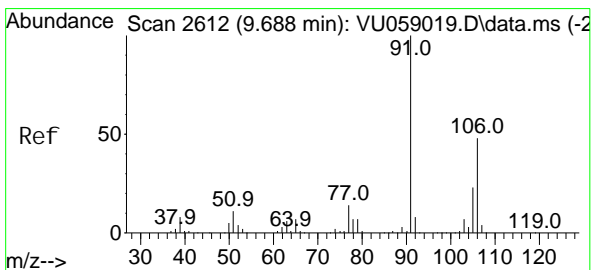
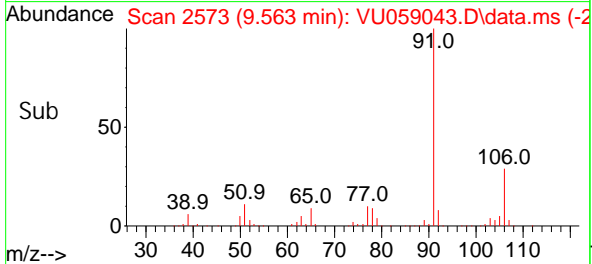
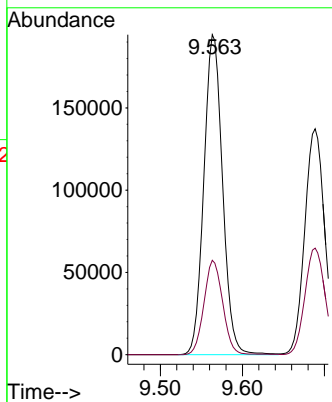
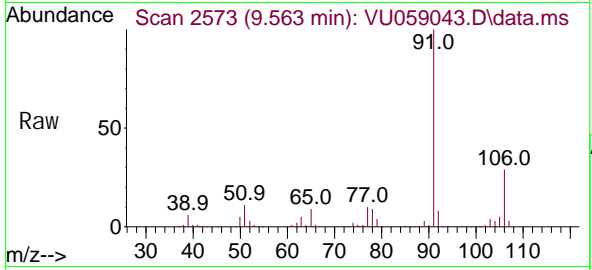




#52
 Ethyl benzene
 Concen: 45.625 ug/L
 RT: 9.563 min Scan# 2573
 Delta R.T. 0.000 min
 Lab File: VU059043.D
 Acq: 28 May 2024 20:35

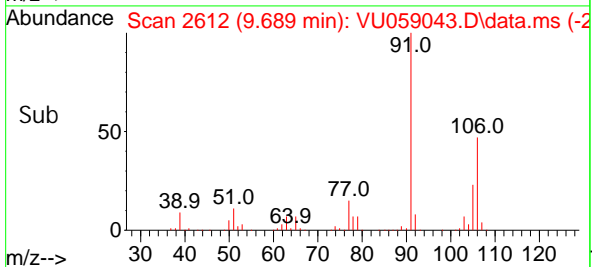
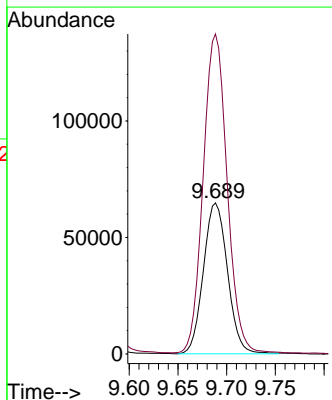
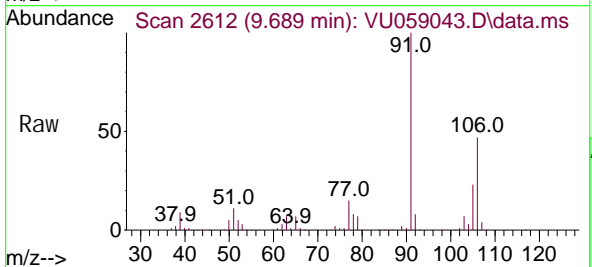
Instrument : MSVOA_U
 ClientSampleId :

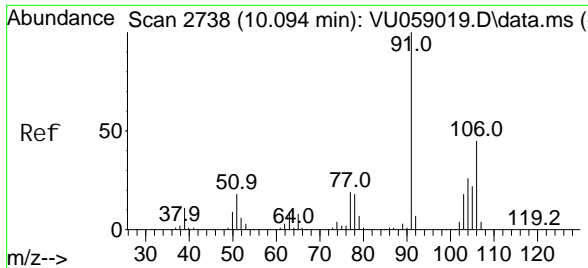
Tgt Ion: 91 Resp: 307681
 Ion Ratio Lower Upper
 91 100
 106 29.5 20.8 38.6



#53
 m, p-Xyl ene
 Concen: 45.963 ug/L
 RT: 9.689 min Scan# 2612
 Delta R.T. 0.000 min
 Lab File: VU059043.D
 Acq: 28 May 2024 20:35

Tgt Ion: 106 Resp: 111338
 Ion Ratio Lower Upper
 106 100
 91 212.0 145.7 270.7

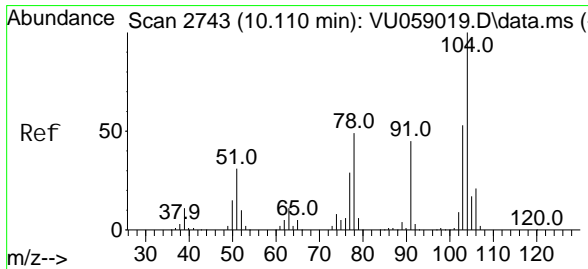
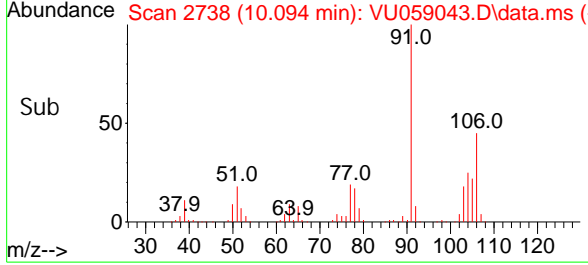
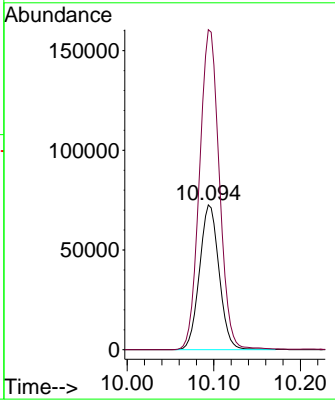
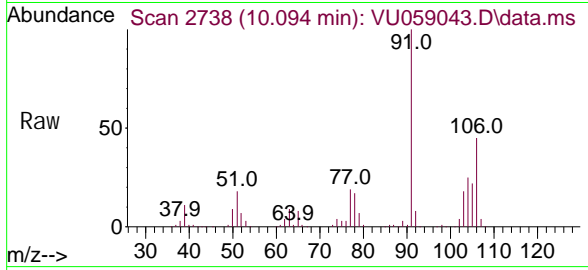




#54
 o-Xyl ene
 Concen: 47.053 ug/L
 RT: 10.094 min Scan# 2738
 Delta R.T. 0.000 min
 Lab File: VU059043.D
 Acq: 28 May 2024 20:35

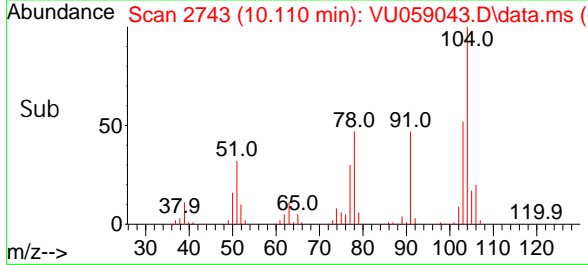
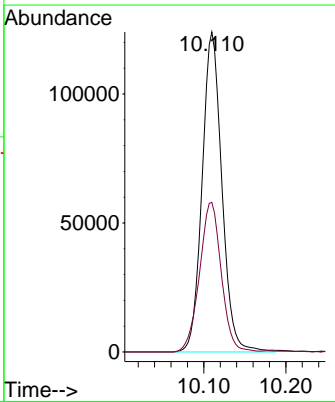
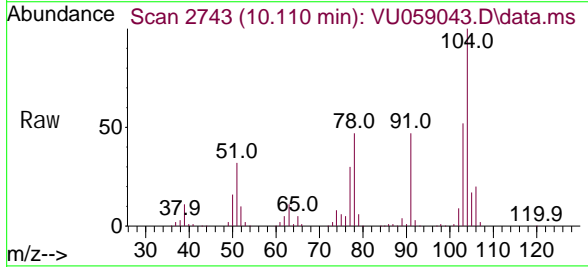
Instrument : MSVOA_U
 ClientSampleId :

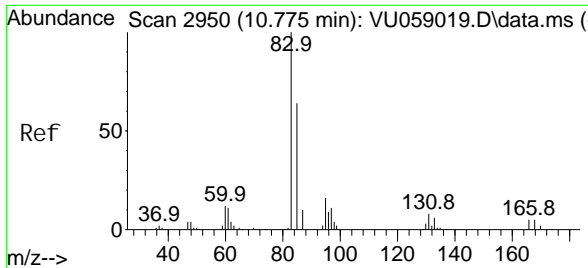
Tgt Ion: 106 Resp: 114078
 Ion Ratio Lower Upper
 106 100
 91 221.1 154.0 286.0



#55
 Styrene
 Concen: 47.924 ug/L
 RT: 10.110 min Scan# 2743
 Delta R.T. 0.000 min
 Lab File: VU059043.D
 Acq: 28 May 2024 20:35

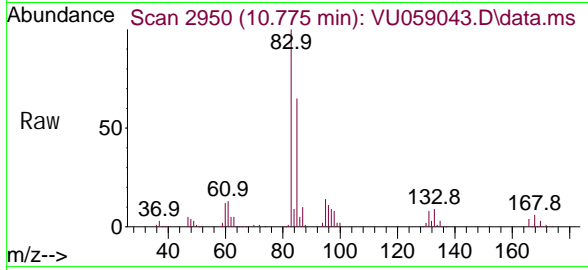
Tgt Ion: 104 Resp: 207548
 Ion Ratio Lower Upper
 104 100
 78 46.7 32.3 59.9



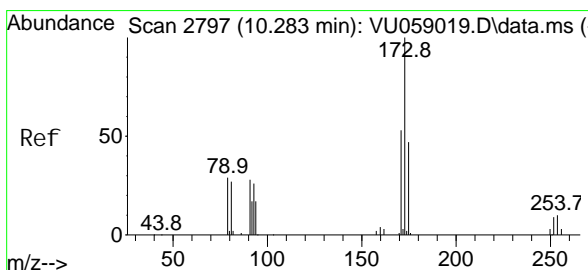
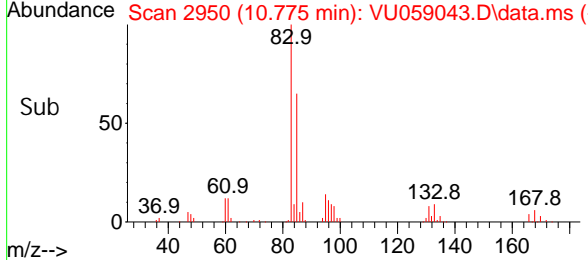
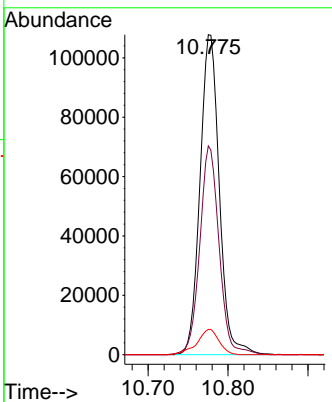


#57
 1,1,2,2-Tetrachloroethane
 Concen: 53.819 ug/L
 RT: 10.775 min Scan# 2950
 Delta R.T. 0.000 min
 Lab File: VU059043.D
 Acq: 28 May 2024 20:35

Instrument : MSVOA_U
 ClientSampleId :

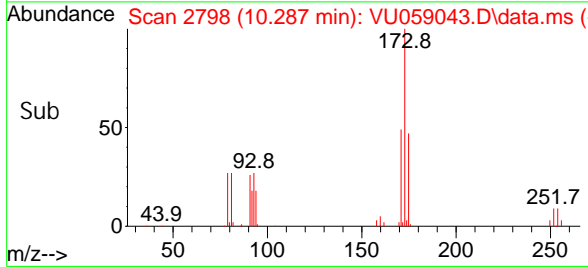
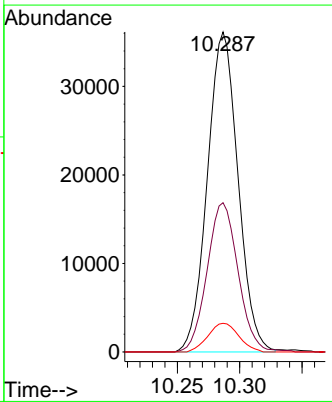
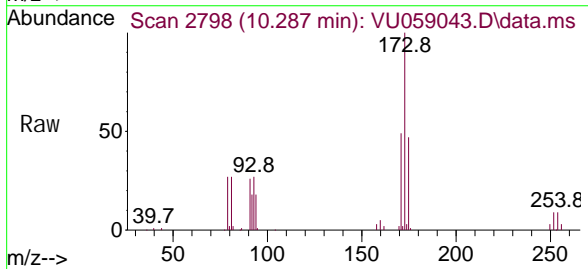


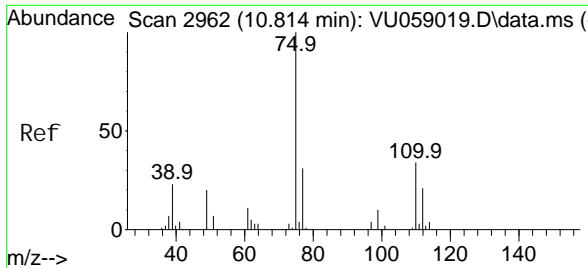
Tgt Ion: 83 Resp: 180905
 Ion Ratio Lower Upper
 83 100
 85 65.3 43.5 80.9
 131 7.9 7.1 10.7



#59
 Bromoform
 Concen: 47.769 ug/L
 RT: 10.287 min Scan# 2798
 Delta R.T. 0.003 min
 Lab File: VU059043.D
 Acq: 28 May 2024 20:35

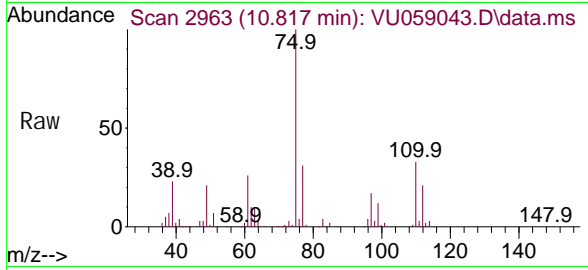
Tgt Ion: 173 Resp: 61731
 Ion Ratio Lower Upper
 173 100
 175 47.1 40.6 61.0
 254 9.0 7.3 10.9



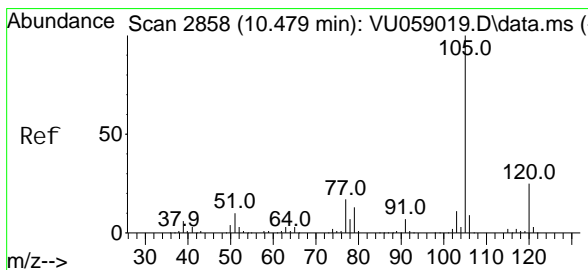
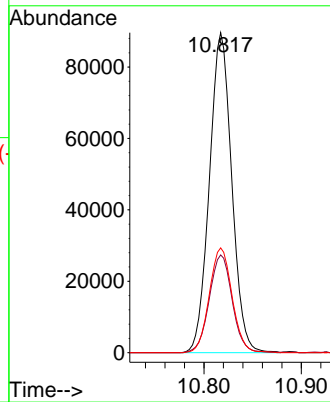
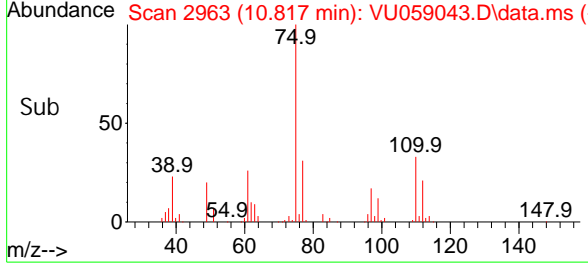


#60
 1, 2, 3-Tri chloropropane
 Concen: 57.577 ug/L
 RT: 10.817 min Scan# 2963
 Delta R.T. 0.003 min
 Lab File: VU059043.D
 Acq: 28 May 2024 20: 35

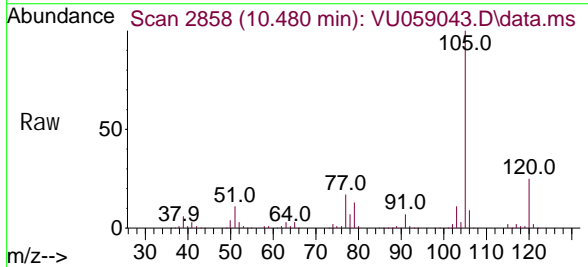
Instrument : MSVOA_U
 ClientSampleId :



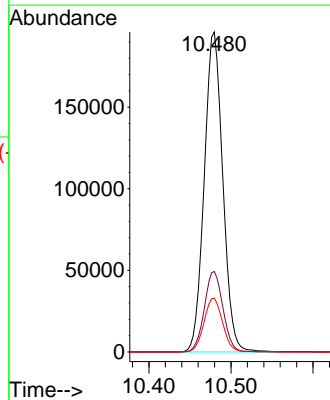
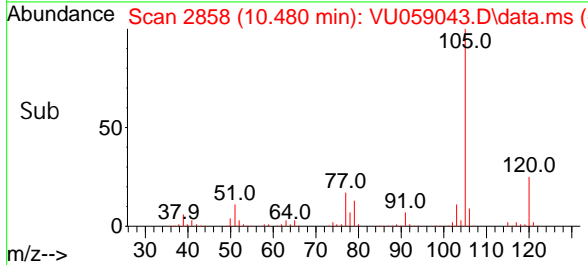
Tgt Ion: 75 Resp: 142860
 Ion Ratio Lower Upper
 75 100
 77 31.4 25.8 38.6
 110 33.3 28.3 42.5

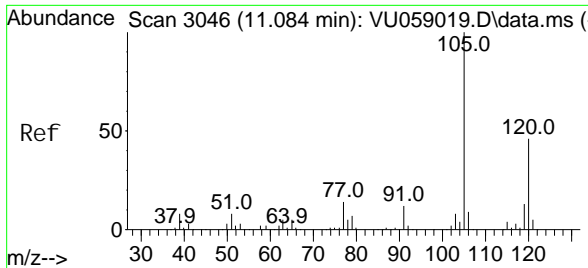


#61
 Isopropyl benzene
 Concen: 49.484 ug/L
 RT: 10.480 min Scan# 2858
 Delta R.T. 0.000 min
 Lab File: VU059043.D
 Acq: 28 May 2024 20: 35



Tgt Ion: 105 Resp: 308097
 Ion Ratio Lower Upper
 105 100
 120 25.2 20.0 30.0
 77 16.9 13.4 20.0

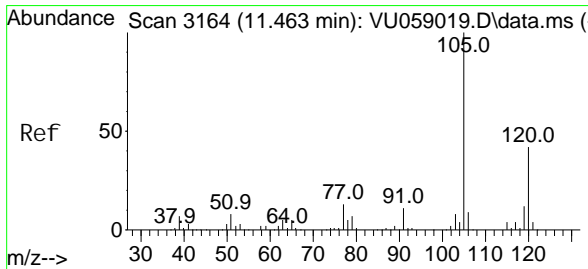
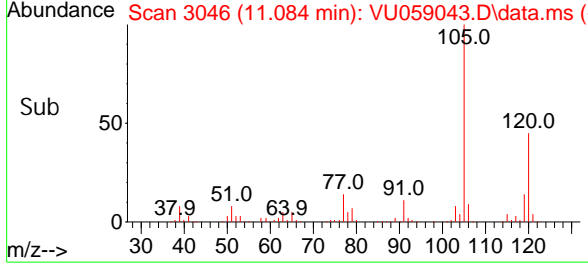
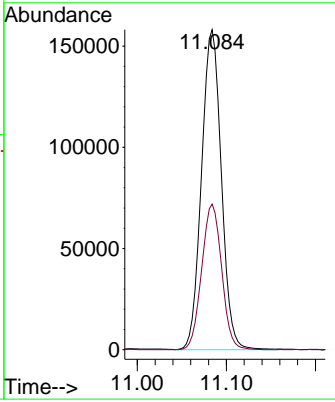
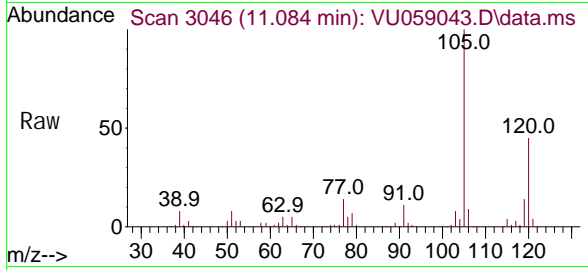




#62
 1, 3, 5-Tri methyl benzene
 Concen: 49.755 ug/L
 RT: 11.084 min Scan# 3046
 Delta R.T. 0.000 min
 Lab File: VU059043.D
 Acq: 28 May 2024 20:35

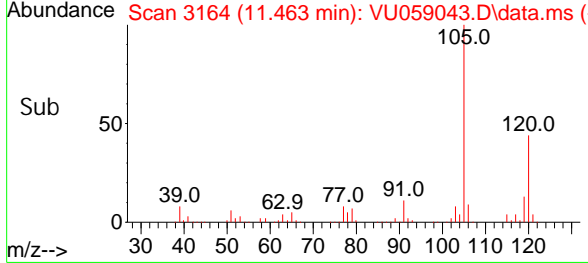
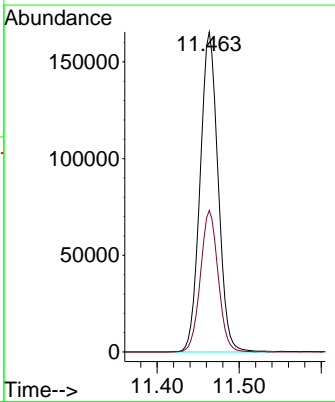
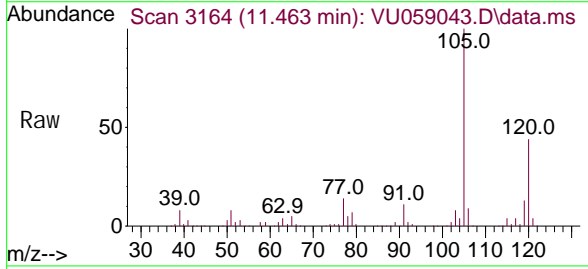
Instrument : MSVOA_U
 ClientSampleId :

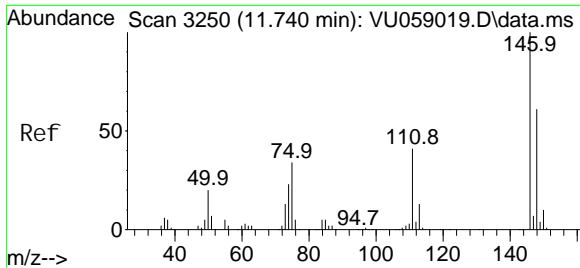
Tgt Ion: 105 Resp: 244055
 Ion Ratio Lower Upper
 105 100
 120 45.8 36.9 55.3



#63
 1, 2, 4-Tri methyl benzene
 Concen: 50.910 ug/L
 RT: 11.463 min Scan# 3164
 Delta R.T. 0.000 min
 Lab File: VU059043.D
 Acq: 28 May 2024 20:35

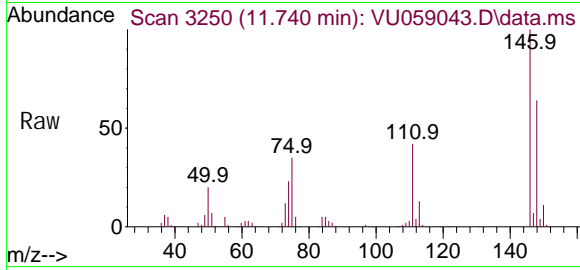
Tgt Ion: 105 Resp: 251841
 Ion Ratio Lower Upper
 105 100
 120 43.7 35.3 52.9



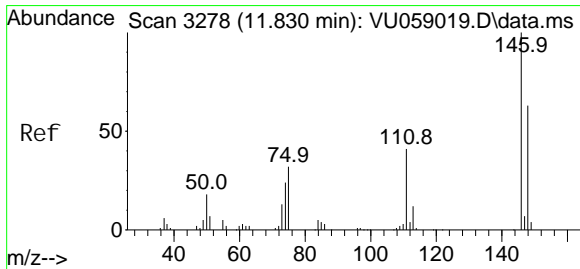
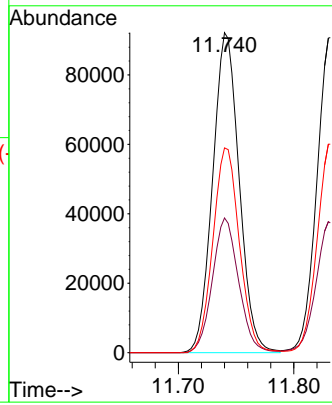
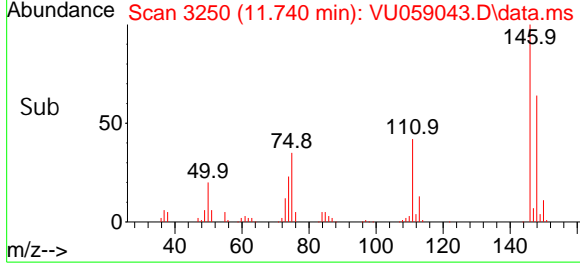


#64
 1,3-Di chl orobenzene
 Concen: 45.468 ug/L
 RT: 11.740 min Scan# 3250
 Delta R.T. 0.000 min
 Lab File: VU059043.D
 Acq: 28 May 2024 20:35

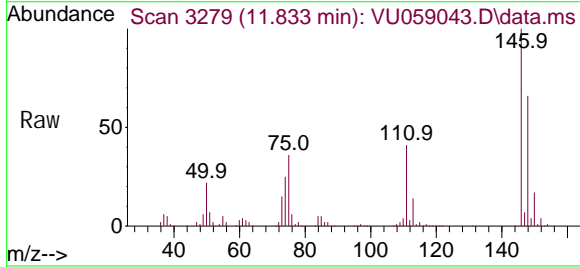
Instrument : MSVOA_U
 ClientSampleId :



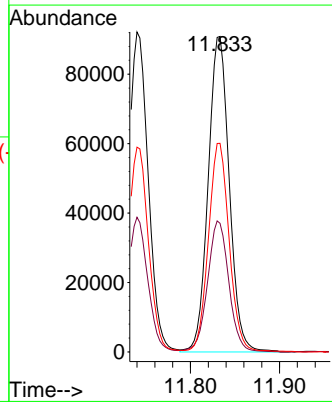
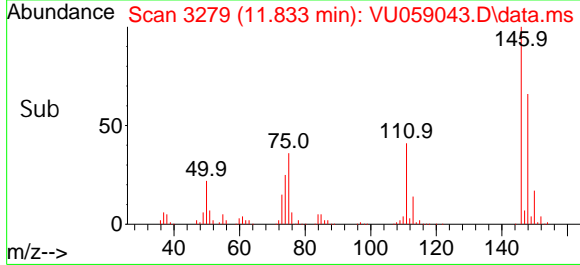
Tgt Ion: 146 Resp: 146969
 Ion Ratio Lower Upper
 146 100
 111 42.1 28.6 53.0
 148 64.0 44.2 82.2

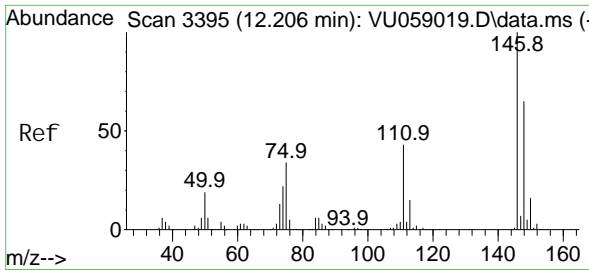


#65
 1,4-Di chl orobenzene
 Concen: 45.769 ug/L
 RT: 11.833 min Scan# 3279
 Delta R.T. 0.003 min
 Lab File: VU059043.D
 Acq: 28 May 2024 20:35



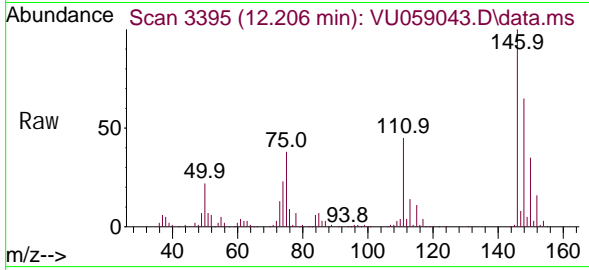
Tgt Ion: 146 Resp: 149426
 Ion Ratio Lower Upper
 146 100
 111 40.8 27.3 50.7
 148 66.1 44.7 83.1



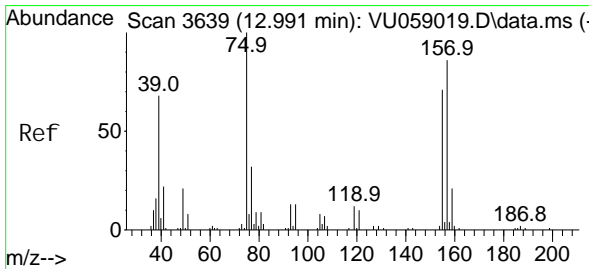
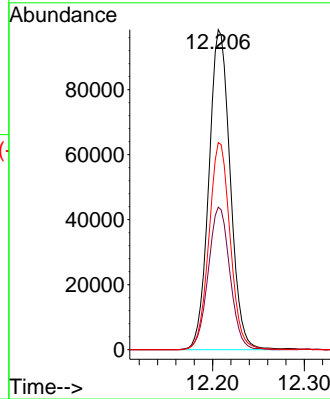
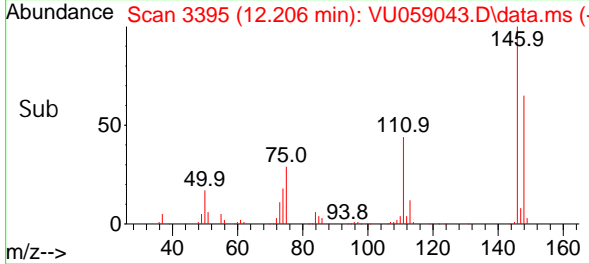


#67
 1, 2-Di chl orobenzene
 Concen: 48.382 ug/L
 RT: 12.206 min Scan# 3395
 Delta R.T. 0.000 min
 Lab File: VU059043.D
 Acq: 28 May 2024 20:35

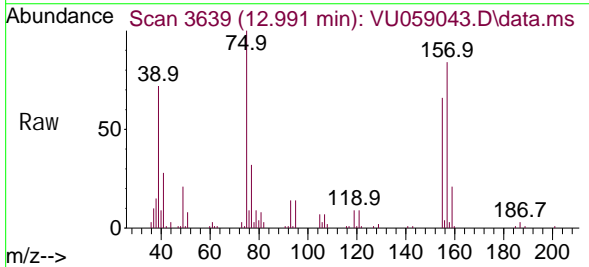
Instrument : MSVOA_U
 ClientSampleId :



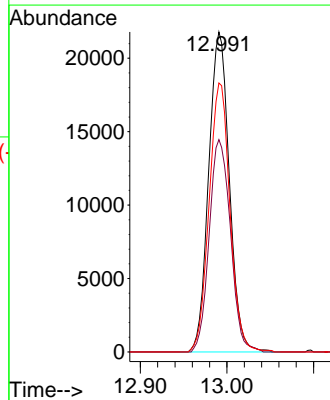
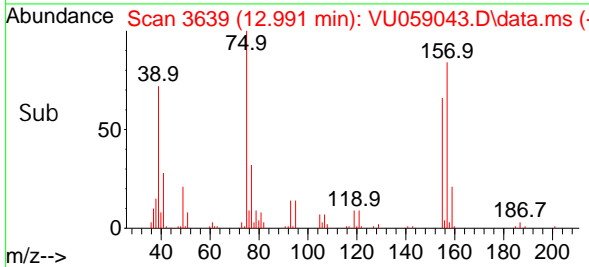
Tgt Ion: 146 Resp: 159063
 Ion Ratio Lower Upper
 146 100
 111 44.5 34.1 51.1
 148 64.7 52.2 78.4

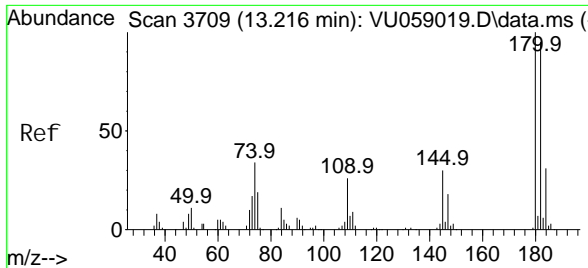


#68
 1, 2-Di bromo-3- chl oropropane
 Concen: 53.698 ug/L
 RT: 12.991 min Scan# 3639
 Delta R.T. 0.000 min
 Lab File: VU059043.D
 Acq: 28 May 2024 20:35



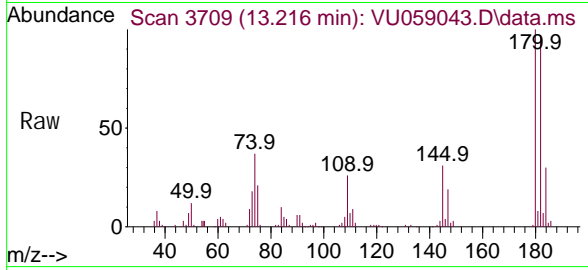
Tgt Ion: 75 Resp: 36044
 Ion Ratio Lower Upper
 75 100
 155 69.9 60.2 90.4
 157 87.2 77.2 115.8



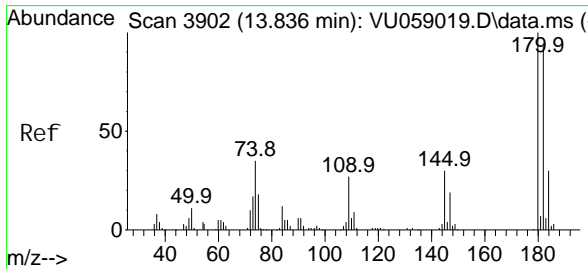
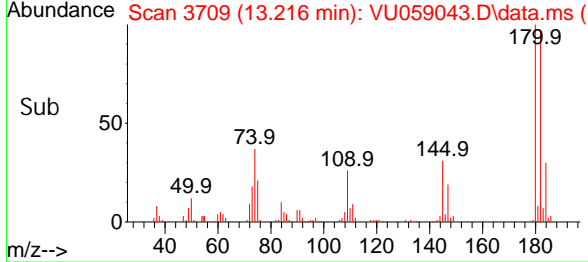
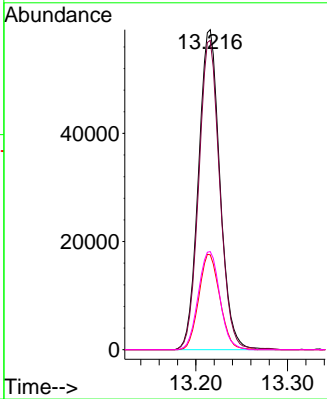


#69
 1, 3, 5-Tri chlorobenzene
 Concen: 42.134 ug/L
 RT: 13.216 min Scan# 3709
 Delta R. T. 0.000 min
 Lab File: VU059043.D
 Acq: 28 May 2024 20:35

Instrument : MSVOA_U
 ClientSampleId :

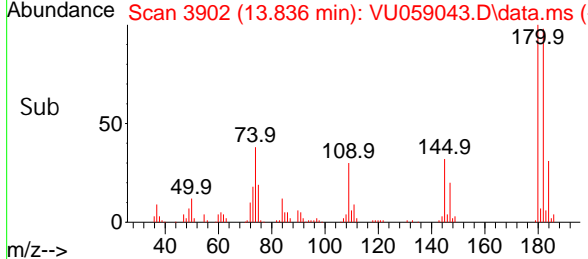
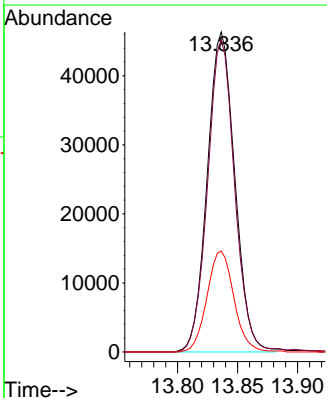
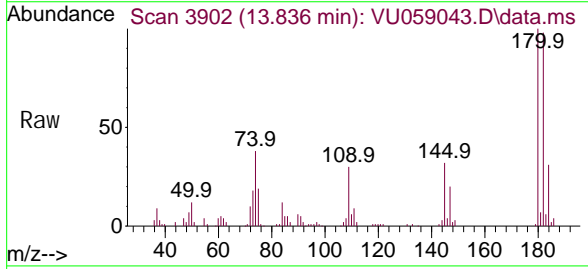


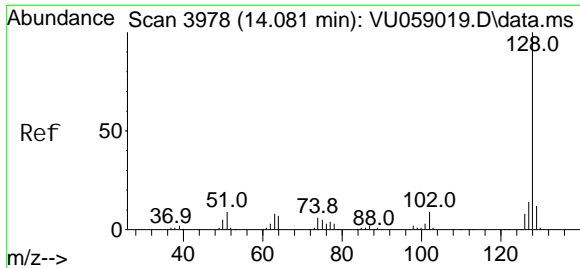
Tgt Ion: 180 Resp: 95927
 Ion Ratio Lower Upper
 180 100
 182 94.5 75.7 113.5
 184 29.2 24.3 36.5
 145 30.8 23.8 35.6



#70
 1, 2, 4-tri chlorobenzene
 Concen: 37.715 ug/L
 RT: 13.836 min Scan# 3902
 Delta R. T. 0.000 min
 Lab File: VU059043.D
 Acq: 28 May 2024 20:35

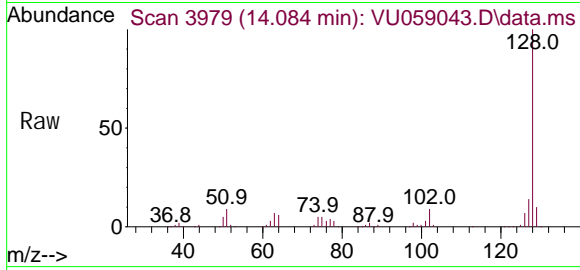
Tgt Ion: 180 Resp: 73958
 Ion Ratio Lower Upper
 180 100
 182 95.4 78.6 117.8
 145 30.8 24.6 37.0



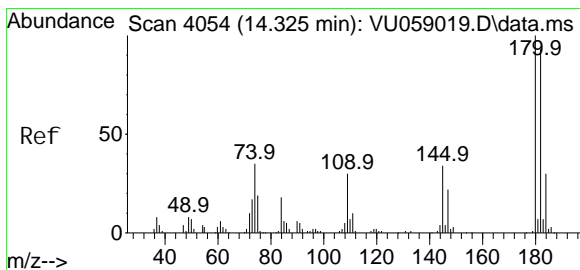
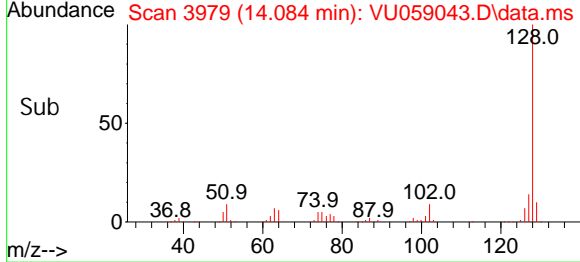
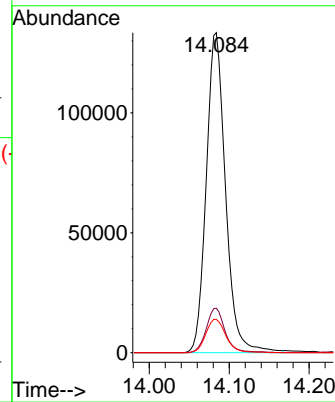


#71
 Naphthalene
 Concen: 39.216 ug/L
 RT: 14.084 min Scan# 3978
 Delta R.T. 0.003 min
 Lab File: VU059043.D
 Acq: 28 May 2024 20:35

Instrument : MSVOA_U
 ClientSampleId :



Tgt Ion: 128 Resp: 224303
 Ion Ratio Lower Upper
 128 100
 127 13.5 10.8 16.2
 129 10.9 8.8 13.2



#72
 1,2,3-Tri chlorobenzene
 Concen: 38.987 ug/L
 RT: 14.325 min Scan# 4054
 Delta R.T. 0.000 min
 Lab File: VU059043.D
 Acq: 28 May 2024 20:35

Tgt Ion: 180 Resp: 78310
 Ion Ratio Lower Upper
 180 100
 182 95.5 76.1 114.1
 145 32.6 26.2 39.2

