

Data Path : Z:\VOASRV\HPCHEM1\MSVOA U\DATA\VU052919\
 Data File : VU032347.D
 Acq On : 29 May 2019 09:32
 Operator : JC/SP
 Sample : VU0529WBL01
 Misc : 25.0mL/MSVOA U/WATER
 ALS Vial : 3 Sample Multiplier: 1

Instrument :
 MSVOA_U
 ClientSampled :
 VBLK26

Integration Parameters: rteint.p
 Integrator: RTE
 Smoothing : ON Filtering: 5
 Sampling : 1 Min Area: 3 % of largest Peak
 Start Thrs: 0.1 Max Peaks: 100
 Stop Thrs : 0 Peak Location: TOP

If leading or trailing edge < 100 prefer < Baseline drop else tangent >
 Peak separation: 5

Method : Z:\VOASRV\HPCHEM1\MSVOA_U\METHOD\SOMUTR052219WMA.M
 Title : TRACE VOA SOM01.0

Signal : TIC

peak #	R.T. min	first scan	max scan	last scan	PK TY	peak height	corr. area	corr. % max.	% of total
1	1.328	70	74	86	rVB2	9455	13360	1.06%	0.127%
2	1.396	88	95	106	rVB	114429	126152	9.97%	1.196%
3	1.682	176	184	195	rVB	116972	141309	11.17%	1.340%
4	2.270	356	367	382	rBV	228041	345041	27.27%	3.271%
5	2.836	532	543	561	rVB	31745	67918	5.37%	0.644%
6	4.212	955	971	1009	rBV2	144009	627939	49.63%	5.953%
7	4.643	1087	1105	1125	rBV2	220830	523126	41.35%	4.960%
8	5.331	1297	1319	1356	rBV2	416298	1192347	94.25%	11.305%
9	5.881	1476	1490	1523	rBV	400735	807341	63.82%	7.654%
10	6.328	1614	1629	1653	rBV	293598	599218	47.36%	5.681%
11	7.225	1897	1908	1931	rBV	133864	257467	20.35%	2.441%
12	7.563	2000	2013	2032	rBV	541094	966181	76.37%	9.160%
13	7.849	2092	2102	2119	rBV2	82637	155524	12.29%	1.475%
14	8.315	2236	2247	2280	rBV2	609496	1265127	100.00%	11.995%
15	8.627	2334	2344	2356	rVB3	8991	17816	1.41%	0.169%
16	9.087	2474	2487	2512	rBV	591110	1015203	80.25%	9.625%
17	10.427	2892	2904	2919	rBV2	294775	481400	38.05%	4.564%
18	11.482	3220	3232	3259	rBV	507269	862107	68.14%	8.174%
19	11.858	3335	3349	3376	rBV	625187	1082957	85.60%	10.267%

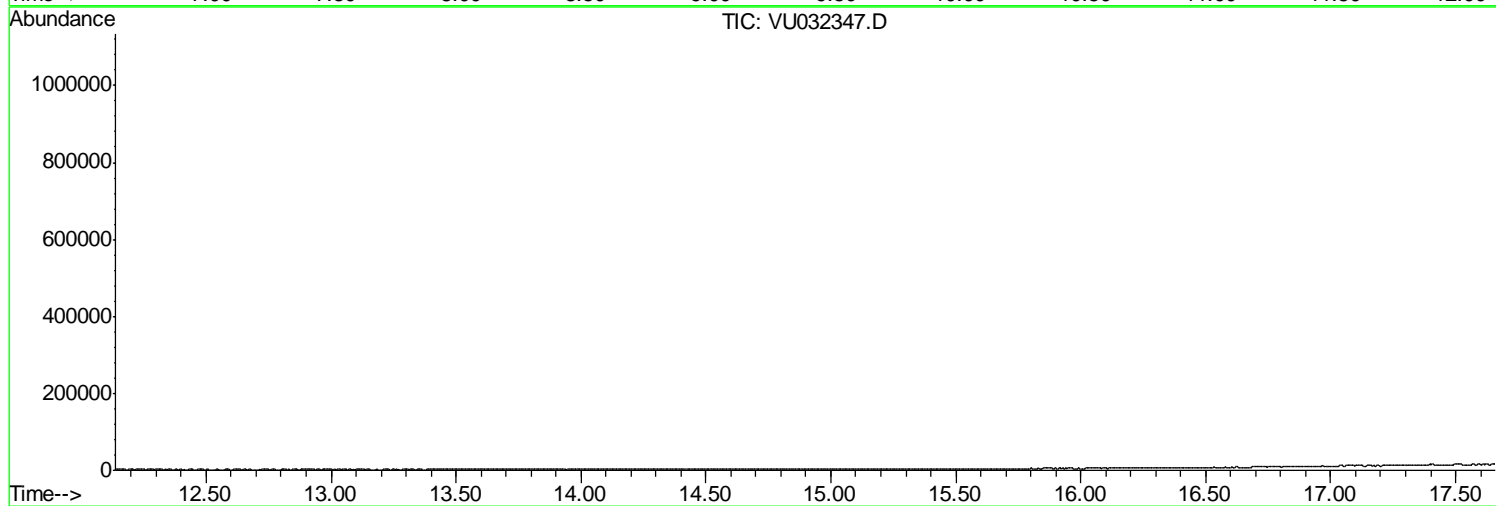
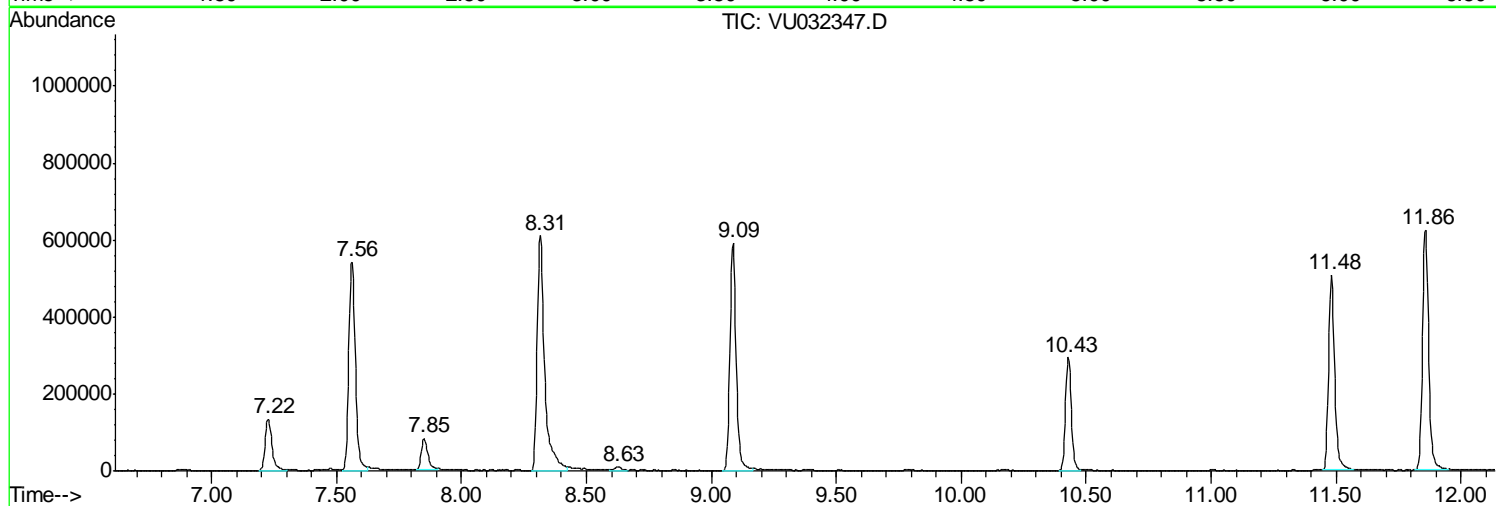
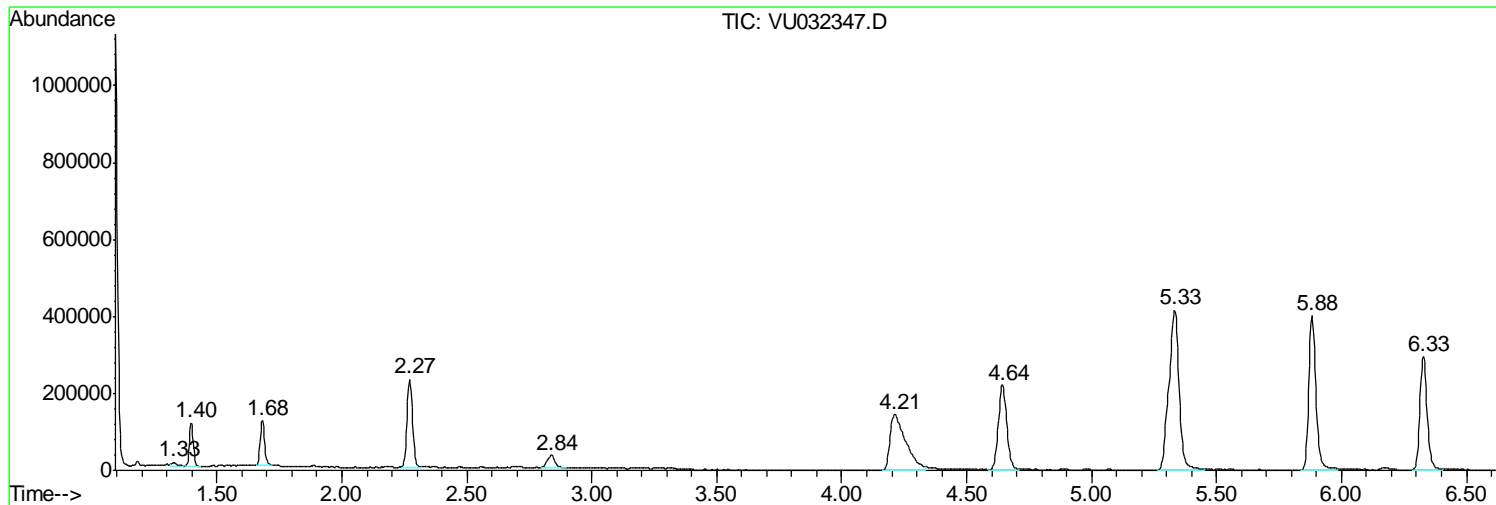
Sum of corrected areas: 10547533

Data Path : Z:\VOASRV\HPCHEM1\MSVOA U\DATA\VU052919\
Data File : VU032347.D
Acq On : 29 May 2019 09:32
Operator : JC/SP
Sample : VU0529WBL01
Misc : 25.0mL/MSVOA U/WATER
ALS Vial : 3 Sample Multiplier: 1

Instrument :
MSVOA_U
ClientSampled :
VBLK26

Quant Method : Z:\VOASRV\HPCHEM1\MSVOA_U\METHOD\SOMUTR052219WMA.M
Quant Title : TRACE VOA SOM01.0

TIC Library : C:\DATABASE\NIST11.L
TIC Integration Parameters: LSCINT.P



Data Path : Z:\VOASRV\HPCHEM1\MSVOA_U\DATA\VU052919\
Data File : VU032347.D
Acq On : 29 May 2019 09:32
Operator : JC/SP
Sample : VU0529WBL01
Misc : 25.0mL/MSVOA_U/WATER
ALS Vial : 3 Sample Multiplier: 1

Instrument :
MSVOA_U
ClientSampleId :
VBLK26

Quant Method : Z:\VOASRV\HPCHEM1\MSVOA_U\METHOD\SOMUTR052219WMA.M
Quant Title : TRACE VOA SOM01.0

TIC Library : C:\DATABASE\NIST11.L
TIC Integration Parameters: LSCINT.P

No Library Search Compounds Detected

Data Path : Z:\VOASRV\HPCHEM1\MSVOA_U\DATA\VU052919\
Data File : VU032347.D
Acq On : 29 May 2019 09:32
Operator : JC/SP
Sample : VU0529WBL01
Misc : 25.0mL/MSVOA_U/WATER
ALS Vial : 3 Sample Multiplier: 1

Instrument :
MSVOA_U
ClientSampleId :
VBLK26

Quant Method : Z:\VOASRV\HPCHEM1\MSVOA_U\METHOD\SOMUTR052219WMA.M
Quant Title : TRACE VOA SOM01.0

TIC Library : C:\DATABASE\NIST11.L
TIC Integration Parameters: LSCINT.P

TIC Top Hit name	RT	EstConc	Units	Response	--Internal Standard--			
					#	RT	Resp	Conc
