

Data Path : Z:\VOASRV\HPCHEM1\MSVOA U\DATA\VU053120\
 Data File : VU038416.D
 Acq On : 30 May 2020 16:24
 Operator : JC/MD
 Sample : L2766-08DL 5X
 Misc : 25.0mL/MSVOA U/WATER
 ALS Vial : 1 Sample Multiplier: 1

Instrument :
 MSVOA_U
 ClientSampled :

Quant Time: Jun 01 02:40:10 2020
 Quant Method : Z:\VOASRV\HPCHEM1\MSVOA_U\METHOD\SOMUTR053120WMA.M
 Quant Title : TRACE VOA SOM01.0
 QLast Update : Mon Jun 01 02:37:32 2020
 Response via : Initial Calibration

Internal Standards	R.T.	QIon	Response	Conc	Units	Dev(Min)
1) 1,4-Difluorobenzene	6.28	114	310667	5.00	ug/L	0.00
28) Chlorobenzene-d5	9.44	117	300487	5.00	ug/L	0.00
60) 1,4-Dichlorobenzene-d4	11.83	152	147322	5.00	ug/L	0.00

System Monitoring Compounds

4) Vinyl Chloride-d3	1.61	65	109662	5.45	ug/L	0.00
Spiked Amount	5.000	Range	40 - 130	Recovery	=	109.00%
7) Chloroethane-d5	1.93	69	88966	5.76	ug/L	0.00
Spiked Amount	5.000	Range	65 - 130	Recovery	=	115.20%
11) 1,1-Dichloroethene-d2	2.59	63	162758	4.11	ug/L	0.00
Spiked Amount	5.000	Range	60 - 125	Recovery	=	82.20%
20) 2-Butanone-d5	4.67	46	377964	61.88	ug/L	-0.01
Spiked Amount	50.000	Range	40 - 130	Recovery	=	123.76%
24) Chloroform-d	5.10	84	212203	5.62	ug/L	0.00
Spiked Amount	5.000	Range	70 - 125	Recovery	=	112.40%
26) 1,2-Dichloroethane-d4	5.74	65	127891	5.96	ug/L	0.00
Spiked Amount	5.000	Range	70 - 130	Recovery	=	119.20%
32) Benzene-d6	5.76	84	441121	5.88	ug/L	0.00
Spiked Amount	5.000	Range	70 - 125	Recovery	=	117.60%
36) 1,2-Dichloropropane-d6	6.72	67	132409	5.74	ug/L	0.00
Spiked Amount	5.000	Range	60 - 140	Recovery	=	114.80%
41) Toluene-d8	7.92	98	370651	5.51	ug/L	0.00
Spiked Amount	5.000	Range	70 - 130	Recovery	=	110.20%
43) trans-1,3-Dichloropropene-	8.20	79	54643	5.51	ug/L	0.00
Spiked Amount	5.000	Range	55 - 130	Recovery	=	110.20%
46) 2-Hexanone-d5	8.65	63	322120	65.75	ug/L	0.00
Spiked Amount	50.000	Range	45 - 130	Recovery	=	131.50%#
57) 1,1,2,2-Tetrachloroethane-	10.77	84	113856	5.81	ug/L	0.00
Spiked Amount	5.000	Range	65 - 120	Recovery	=	116.20%
64) 1,2-Dichlorobenzene-d4	12.20	152	149220	5.87	ug/L	0.00
Spiked Amount	5.000	Range	80 - 120	Recovery	=	117.40%

Target Compounds

Target Compounds	R.T.	QIon	Response	Conc	Units	Ovalue
8) Chloroethane	1.95	64	10781	0.747	ug/L	90
12) 1,1-Dichloroethene	2.59	96	1235	0.065	ug/L #	1
15) Methyl Acetate	3.11	43	16095	1.644	ug/L #	51
16) Methylene chloride	3.07	84	1723	0.080	ug/L	92
17) Methyl tert-butyl Ether	3.41	73	7191	0.143	ug/L #	1
27) 1,2-Dichloroethane	5.81	62	7114	0.270	ug/L #	74
30) Cyclohexane	5.42	56	4628	0.139	ug/L	96
33) Benzene	5.81	78	812205	9.693	ug/L	100
35) Methylcyclohexane	6.79	83	3924	0.117	ug/L	94
37) 1,2-Dichloropropane	6.72	63	13798	0.654	ug/L #	87
39) cis-1,3-Dichloropropene	7.59	75	3614	0.116	ug/L #	63
48) 2-Hexanone	8.71	43	15784	1.382	ug/L	93
51) Chlorobenzene	9.47	112	100952	1.781	ug/L	99
52) Ethylbenzene	9.59	91	17466	0.179	ug/L	97
53) m,p-Xylene	9.71	106	46106	1.226	ug/L	99
54) o-Xylene	10.12	106	8792	0.244	ug/L	93
56) Isopropylbenzene	10.50	105	46492	0.489	ug/L	99

Data Path : Z:\VOASRV\HPCHEM1\MSVOA U\DATA\VU053120\
 Data File : VU038416.D
 Acq On : 30 May 2020 16:24
 Operator : JC/MD
 Sample : L2766-08DL 5X
 Misc : 25.0mL/MSVOA U/WATER
 ALS Vial : 1 Sample Multiplier: 1

Instrument :
 MSVOA_U
 ClientSampleId :

Quant Time: Jun 01 02:40:10 2020
 Quant Method : Z:\VOASRV\HPCHEM1\MSVOA_U\METHOD\SOMUTR053120WMA.M
 Quant Title : TRACE VOA SOM01.0
 QLast Update : Mon Jun 01 02:37:32 2020
 Response via : Initial Calibration

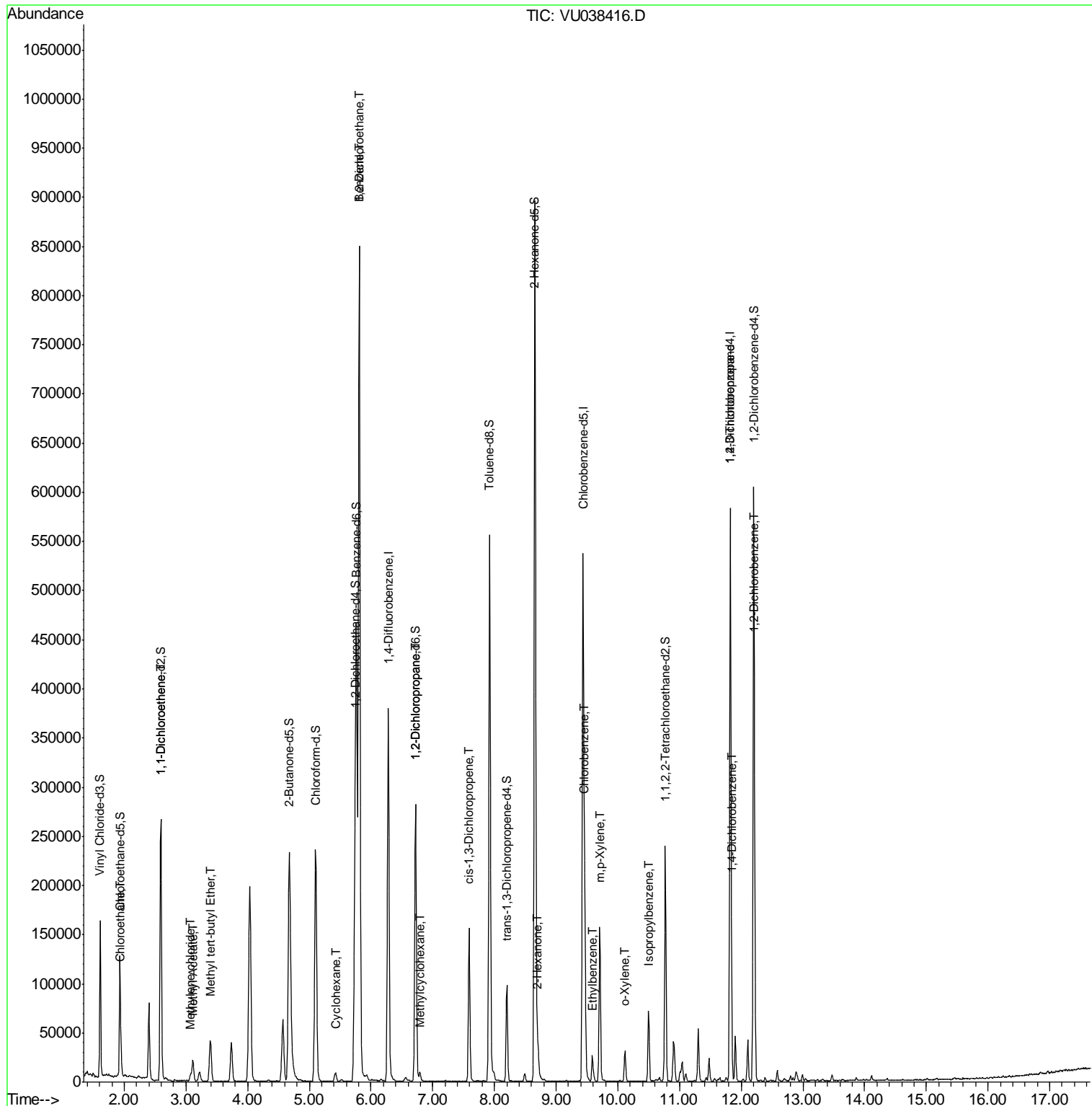
Internal Standards	R.T.	QIon	Response	Conc	Units	Dev(Min)
59) 1,2,3-Trichloropropane	11.83	75	21845	1.388	ug/L	96
63) 1,4-Dichlorobenzene	11.85	146	9833	0.224	ug/L	97
65) 1,2-Dichlorobenzene	12.22	146	15524	0.378	ug/L	92

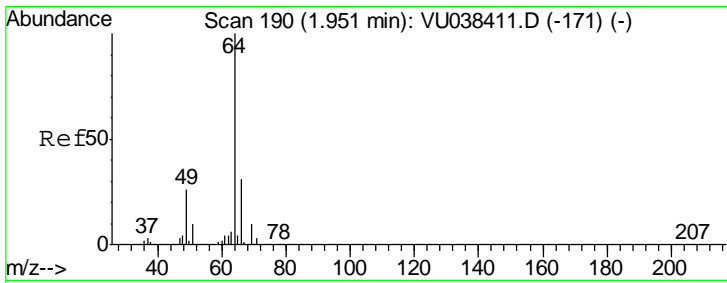
(#) = qualifier out of range (m) = manual integration (+) = signals summed

Data Path : Z:\VOASRV\HPCHEM1\MSVOA U\DATA\VU053120\
 Data File : VU038416.D
 Acq On : 30 May 2020 16:24
 Operator : JC/MD
 Sample : L2766-08DL 5X
 Misc : 25.0mL/MSVOA U/WATER
 ALS Vial : 1 Sample Multiplier: 1

Instrument :
 MSVOA_U
 Client Sampled :

Quant Time: Jun 01 02:40:10 2020
 Quant Method : Z:\VOASRV\HPCHEM1\MSVOA_U\METHOD\SOMUTR053120WMA.M
 Quant Title : TRACE VOA SOM01.0
 QLast Update : Mon Jun 01 02:37:32 2020
 Response via : Initial Calibration

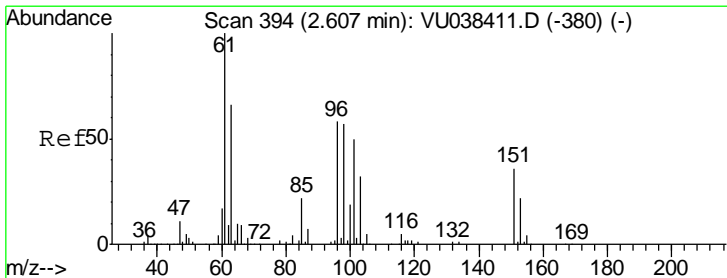
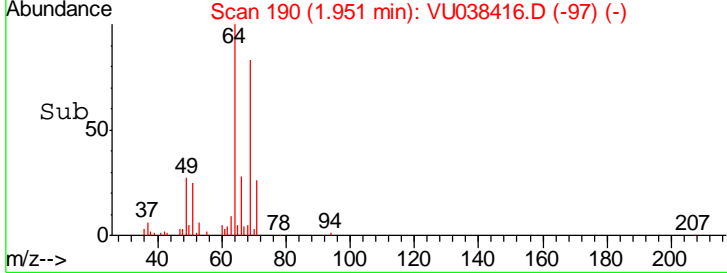
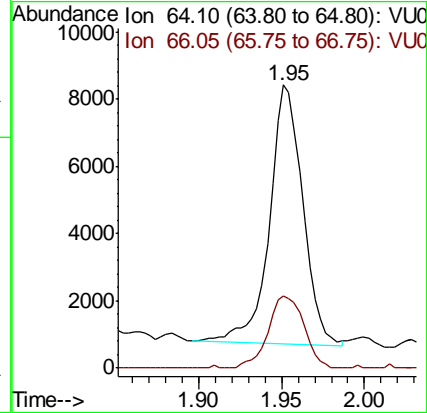
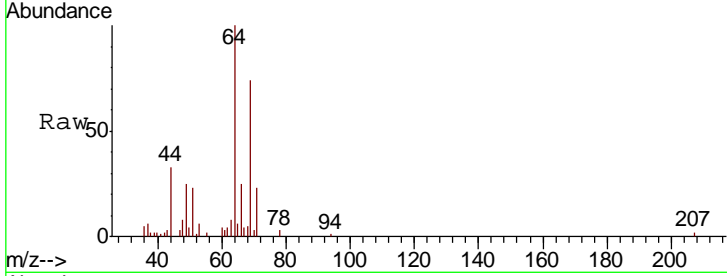




#8
 Chloroethane
 Concen: 0.747 ug/L
 RT: 1.95 min Scan# 190
 Delta R.T. -0.00 min
 Lab File: VU038416.D
 Acq: 30 May 2020 16:24

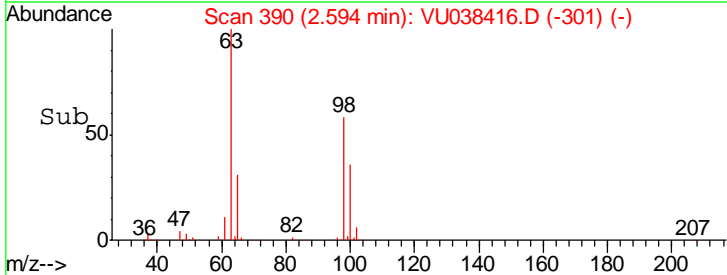
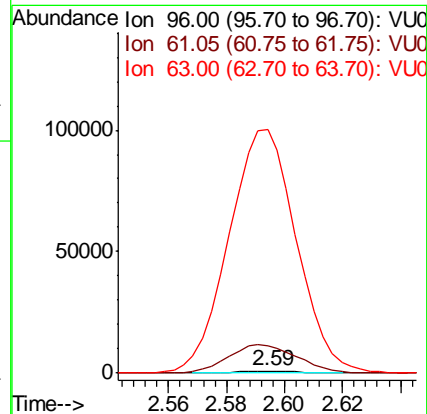
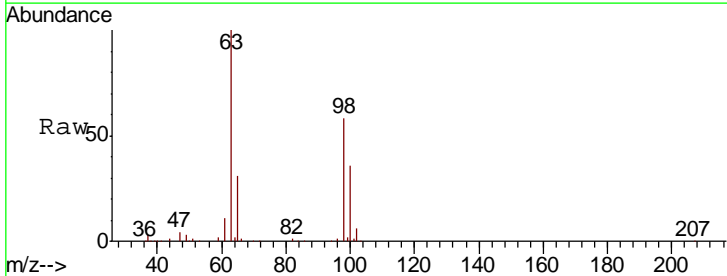
Instrument :
 MSVOA_U
 ClientSampled :

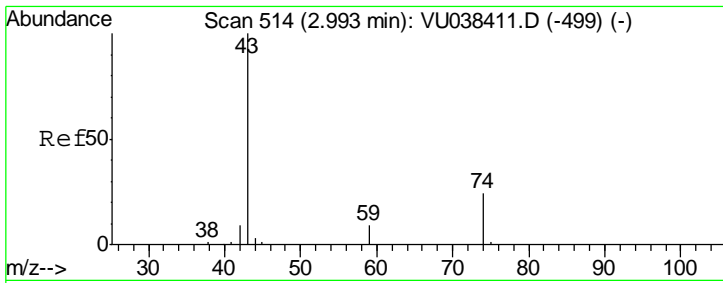
Tgt Ion	Resp	Lower	Upper
64	10781		
66	25.4	21.5	39.9



#12
 1,1-Dichloroethene
 Concen: 0.065 ug/L
 RT: 2.59 min Scan# 390
 Delta R.T. -0.01 min
 Lab File: VU038416.D
 Acq: 30 May 2020 16:24

Tgt Ion	Resp	Lower	Upper
96	1235		
61	1353.6	119.9	222.7#
63	11803.1	89.9	167.0#

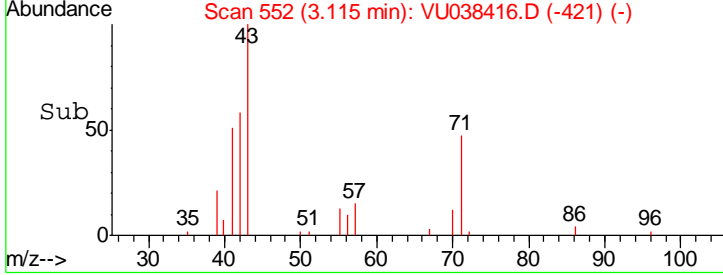
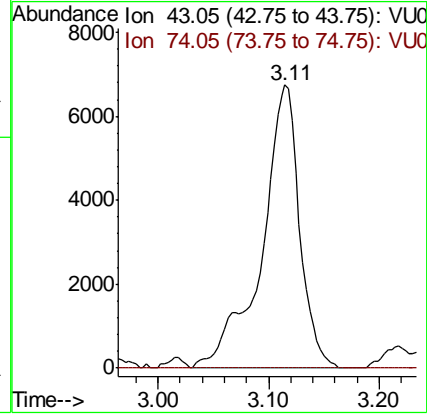
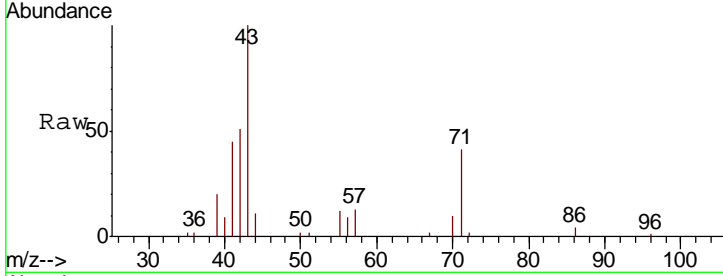




#15
 Methyl Acetate
 Concen: 1.644 ug/L
 RT: 3.11 min Scan# 552
 Delta R.T. 0.12 min
 Lab File: VU038416.D
 Acq: 30 May 2020 16:24

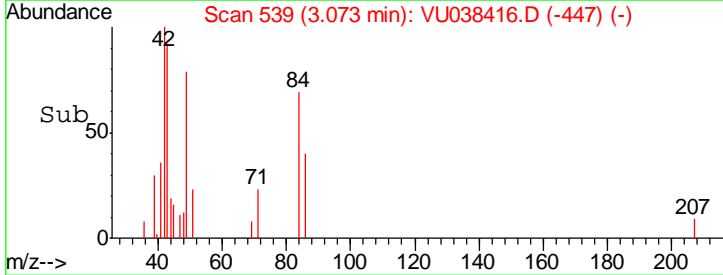
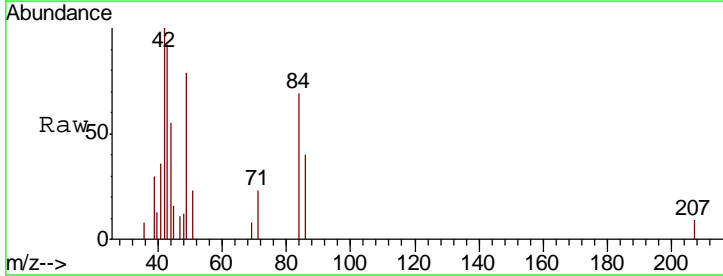
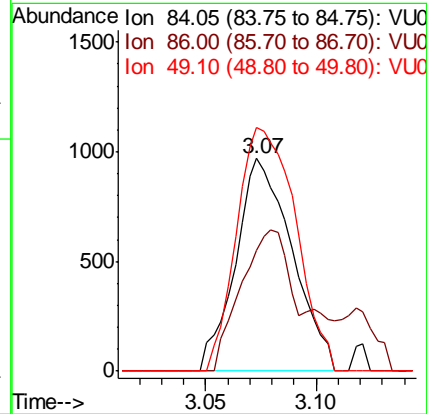
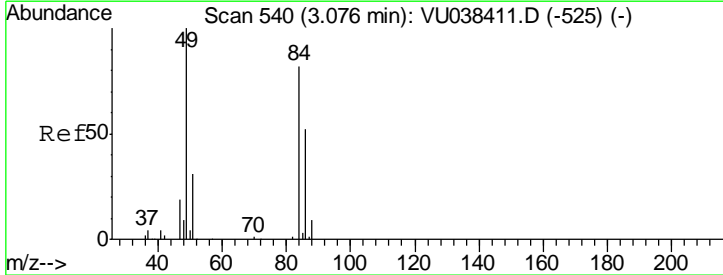
Instrument :
 MSVOA_U
 ClientSampled :

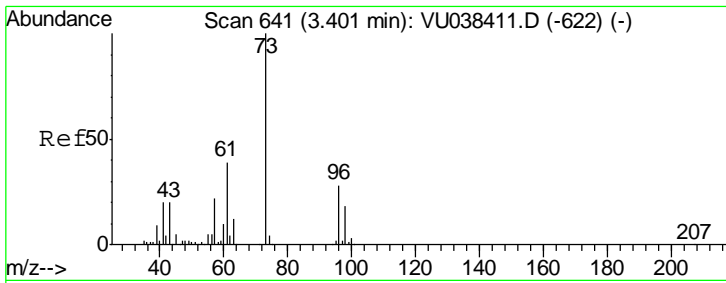
Tgt Ion	Resp	Lower	Upper
43	16095		
74	0.0	19.2	28.8#



#16
 Methylene chloride
 Concen: 0.080 ug/L
 RT: 3.07 min Scan# 539
 Delta R.T. -0.00 min
 Lab File: VU038416.D
 Acq: 30 May 2020 16:24

Tgt Ion	Resp	Lower	Upper
84	1723		
86	57.1	45.0	83.6
49	114.7	85.5	158.9

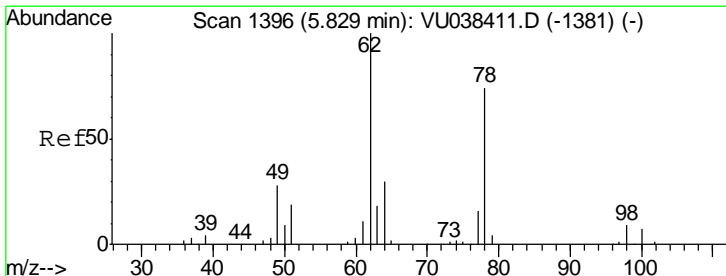
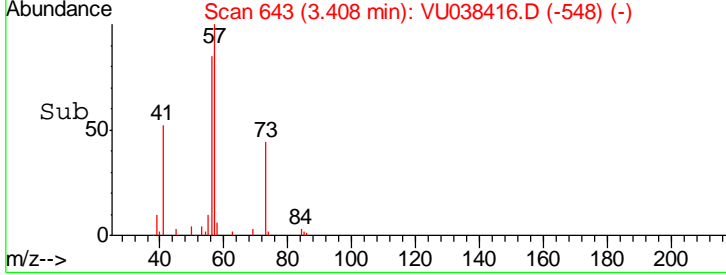
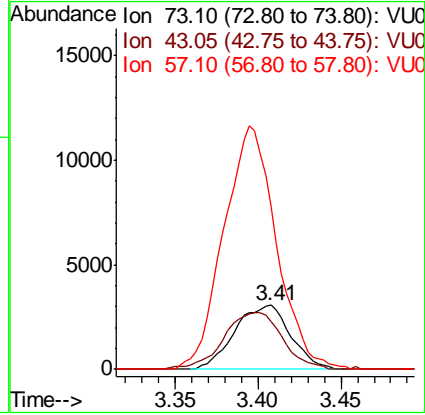
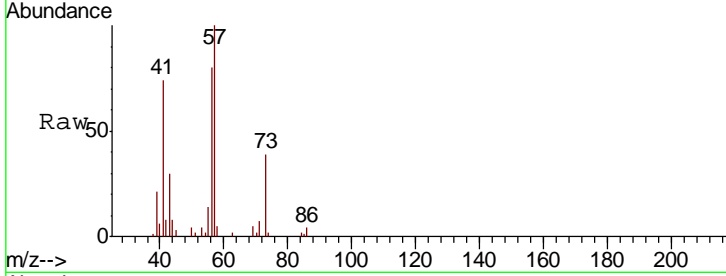




#17
 Methyl tert-butyl Ether
 Concen: 0.143 ug/L
 RT: 3.41 min Scan# 643
 Delta R.T. 0.01 min
 Lab File: VU038416.D
 Acq: 30 May 2020 16:24

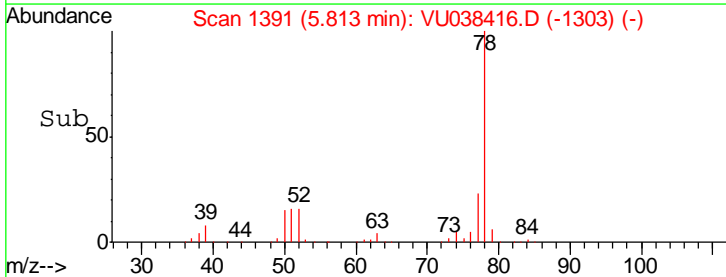
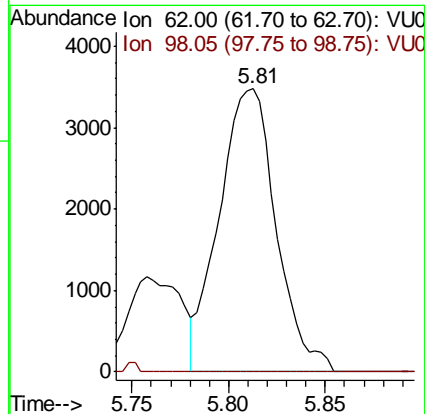
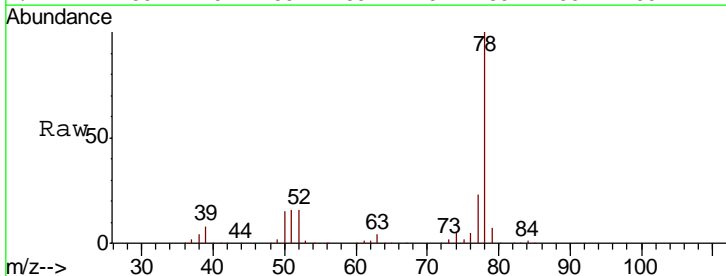
Instrument :
 MSVOA_U
 ClientSampled :

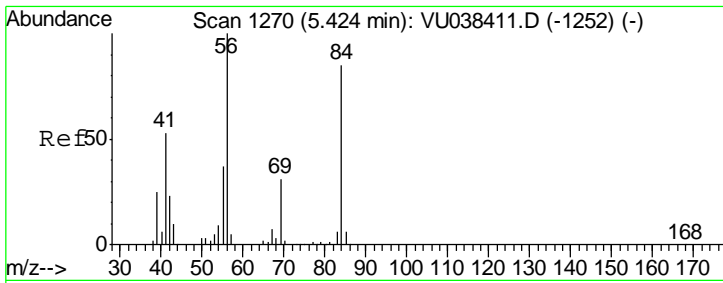
Tgt Ion	Resp	Lower	Upper
73	100		
43	92.9	15.5	23.3#
57	356.8	17.8	26.6#



#27
 1,2-Dichloroethane
 Concen: 0.270 ug/L
 RT: 5.81 min Scan# 1391
 Delta R.T. -0.02 min
 Lab File: VU038416.D
 Acq: 30 May 2020 16:24

Tgt Ion	Resp	Lower	Upper
62	100		
98	0.0	7.4	11.2#

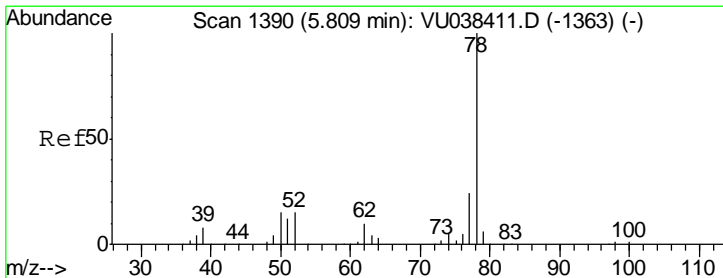
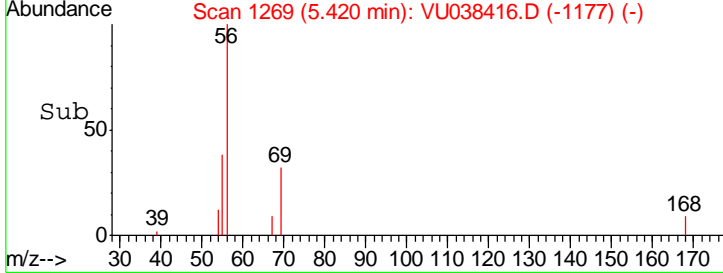
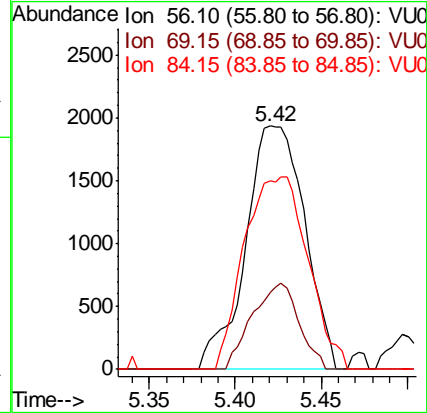
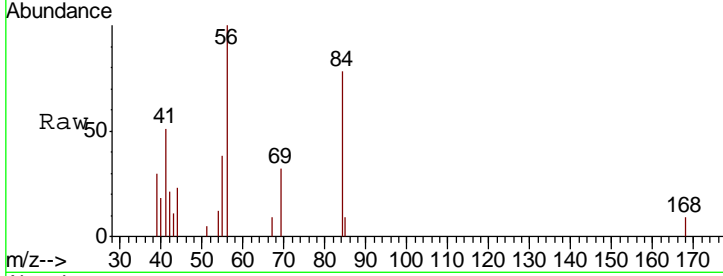




#30
 Cyclohexane
 Concen: 0.139 ug/L
 RT: 5.42 min Scan# 1269
 Delta R.T. -0.00 min
 Lab File: VU038416.D
 Acq: 30 May 2020 16:24

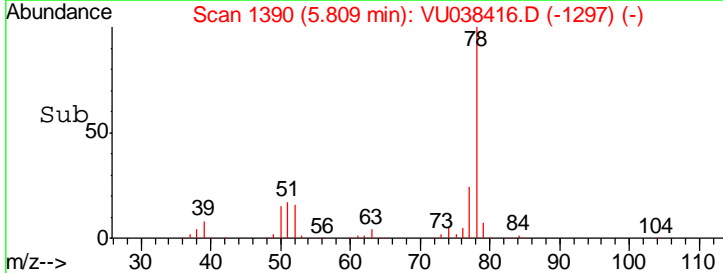
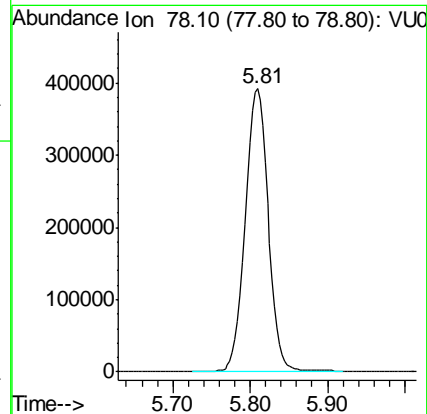
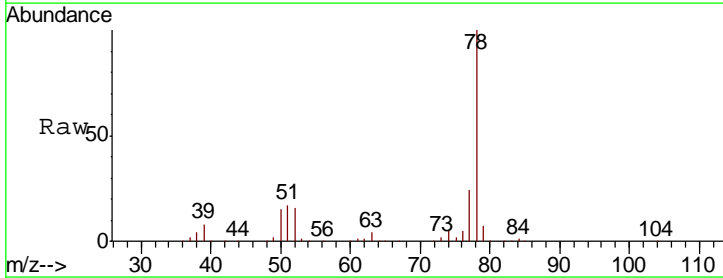
Instrument :
 MSVOA_U
 ClientSampled :

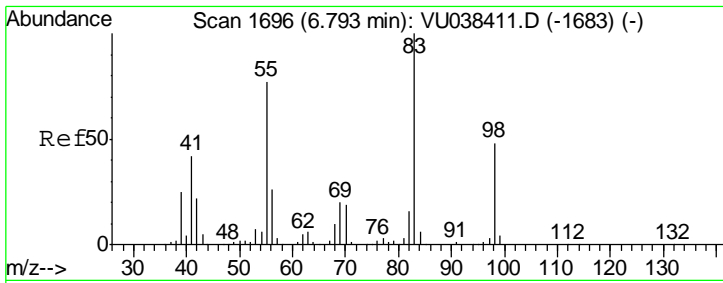
Tgt Ion	Resp	Lower	Upper
56	4628		
69	27.9	24.2	36.4
84	85.1	70.8	106.2



#33
 Benzene
 Concen: 9.693 ug/L
 RT: 5.81 min Scan# 1390
 Delta R.T. -0.00 min
 Lab File: VU038416.D
 Acq: 30 May 2020 16:24

Tgt Ion: 78 Resp: 812205

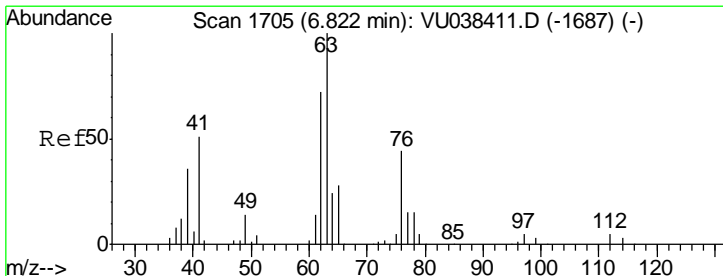
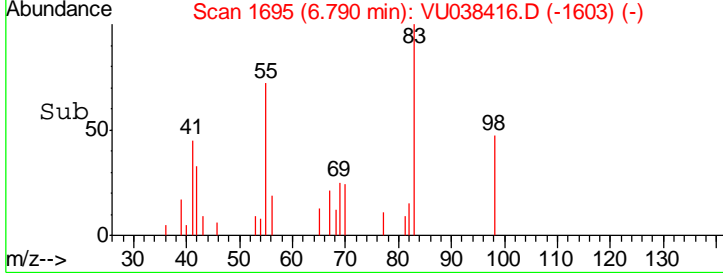
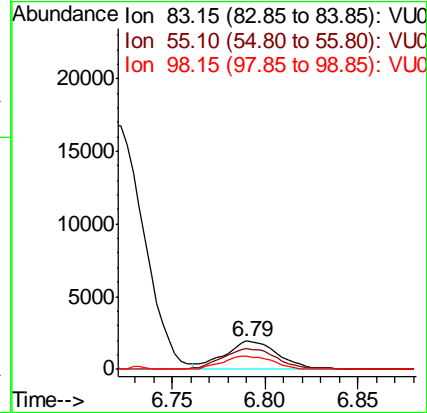
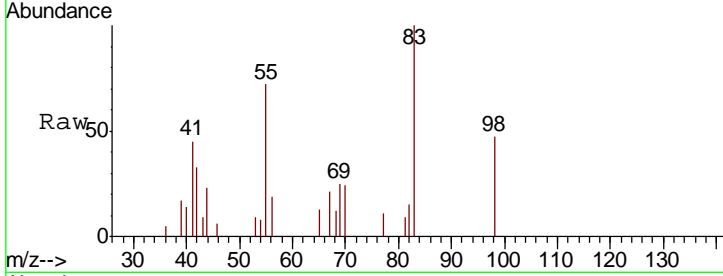




#35
 Methylcyclohexane
 Concen: 0.117 ug/L
 RT: 6.79 min Scan# 1695
 Delta R.T. -0.00 min
 Lab File: VU038416.D
 Acq: 30 May 2020 16:24

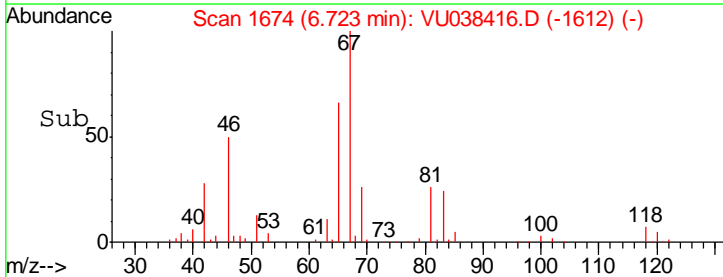
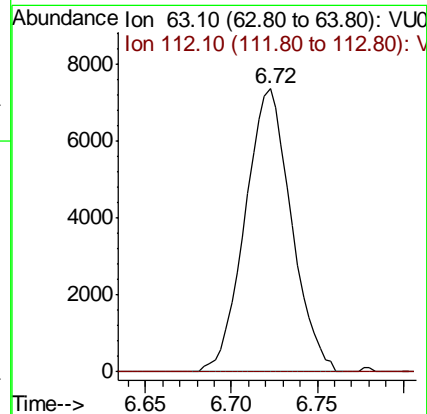
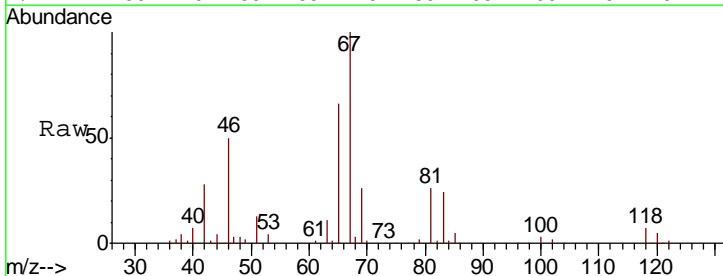
Instrument :
 MSVOA_U
 ClientSampled :

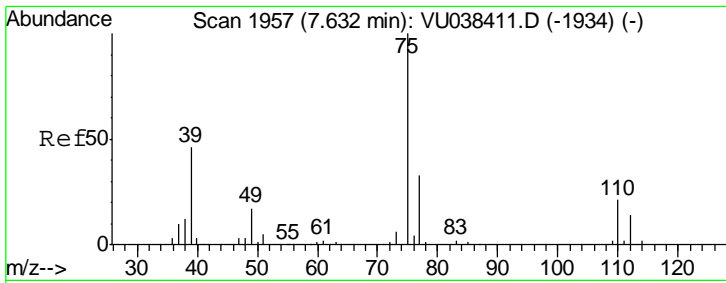
Tgt Ion	Resp	Lower	Upper
83	3924		
83	100		
55	74.8	63.4	95.2
98	43.2	39.0	58.4



#37
 1,2-Dichloropropane
 Concen: 0.654 ug/L
 RT: 6.72 min Scan# 1674
 Delta R.T. -0.10 min
 Lab File: VU038416.D
 Acq: 30 May 2020 16:24

Tgt Ion	Resp	Lower	Upper
63	13798		
63	100		
112	0.3	3.7	5.5#

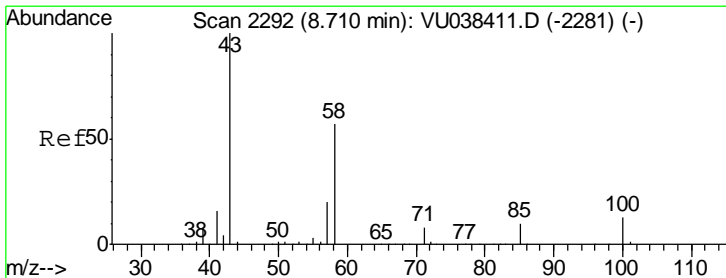
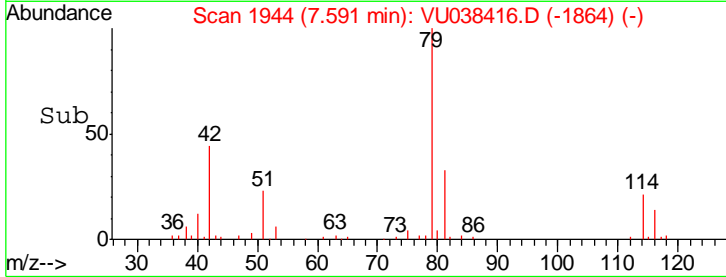
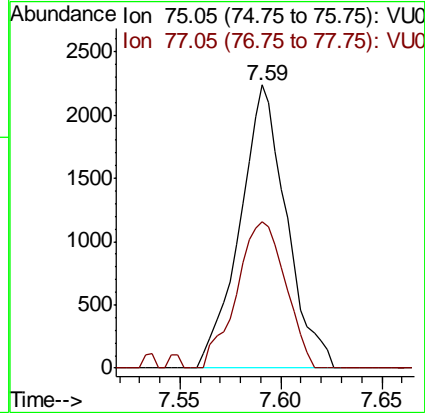
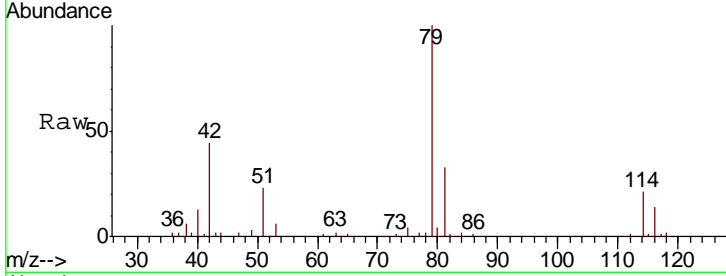




#39
 cis-1,3-Dichloropropene
 Concen: 0.116 ug/L
 RT: 7.59 min Scan# 1944
 Delta R.T. -0.04 min
 Lab File: VU038416.D
 Acq: 30 May 2020 16:24

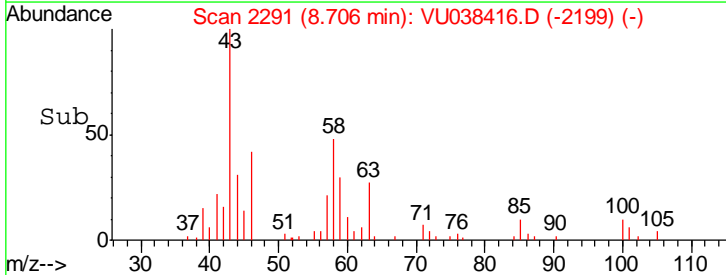
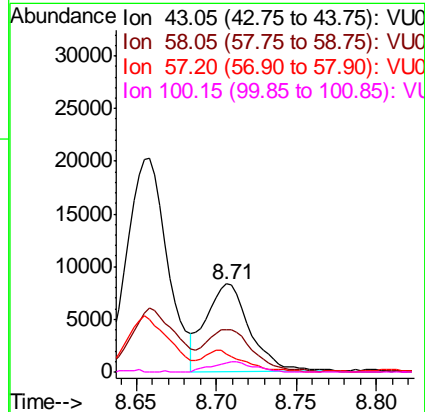
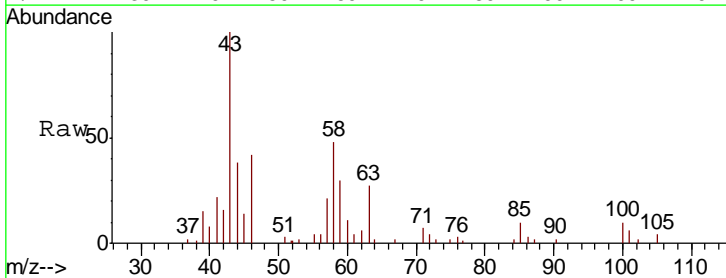
Instrument : MSVOA_U
 ClientSampled :

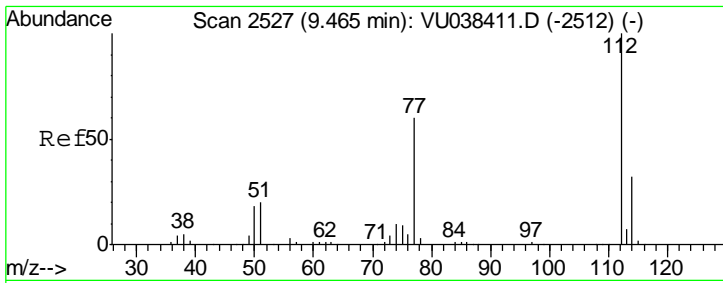
Tgt Ion: 75 Resp: 3614
 Ion Ratio Lower Upper
 75 100
 77 51.5 21.9 40.7#



#48
 2-Hexanone
 Concen: 1.382 ug/L
 RT: 8.71 min Scan# 2291
 Delta R.T. -0.00 min
 Lab File: VU038416.D
 Acq: 30 May 2020 16:24

Tgt Ion: 43 Resp: 15784
 Ion Ratio Lower Upper
 43 100
 58 51.4 45.4 68.0
 57 22.6 15.9 23.9
 100 10.8 10.5 15.7

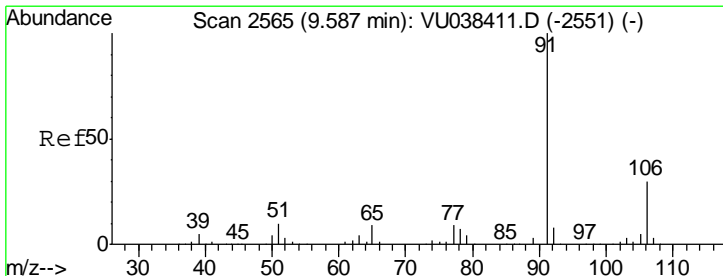
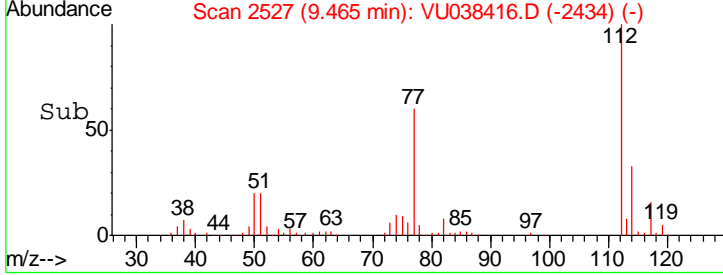
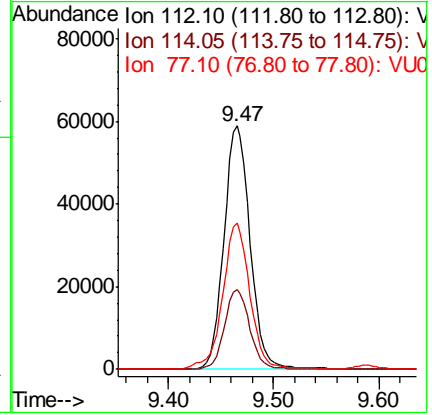
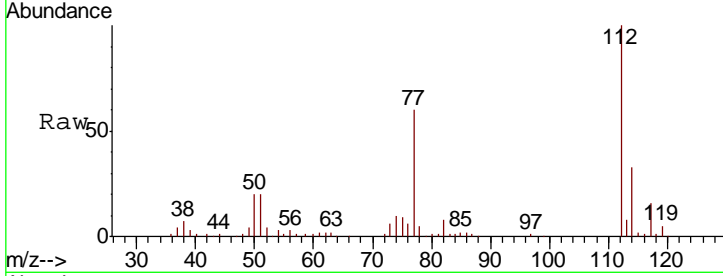




#51
 Chlorobenzene
 Concen: 1.781 ug/L
 RT: 9.47 min Scan# 2527
 Delta R.T. -0.00 min
 Lab File: VU038416.D
 Acq: 30 May 2020 16:24

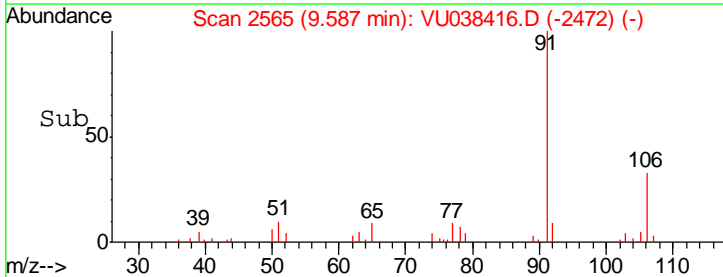
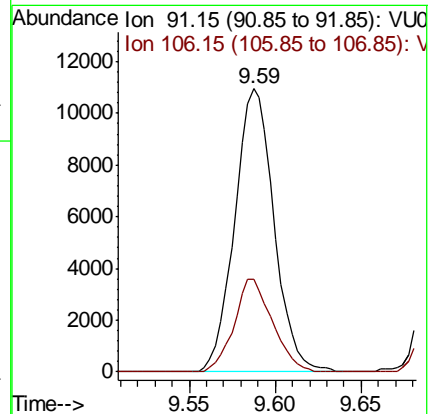
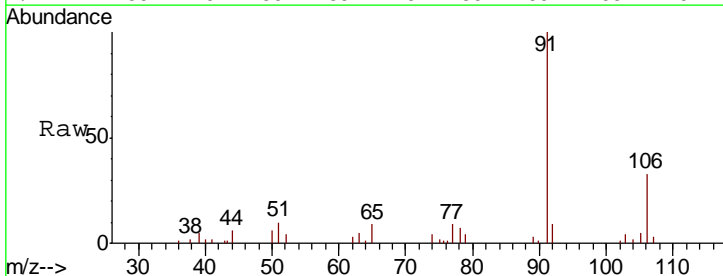
Instrument :
 MSVOA_U
 ClientSampled :

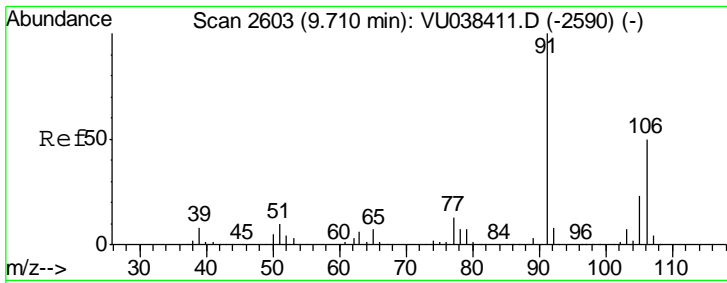
Tgt Ion	Resp	Lower	Upper
112	100952		
114	32.7	22.4	41.6
77	60.0	47.1	70.7



#52
 Ethylbenzene
 Concen: 0.179 ug/L
 RT: 9.59 min Scan# 2565
 Delta R.T. -0.00 min
 Lab File: VU038416.D
 Acq: 30 May 2020 16:24

Tgt Ion	Resp	Lower	Upper
91	17466		
106	32.7	21.7	40.3

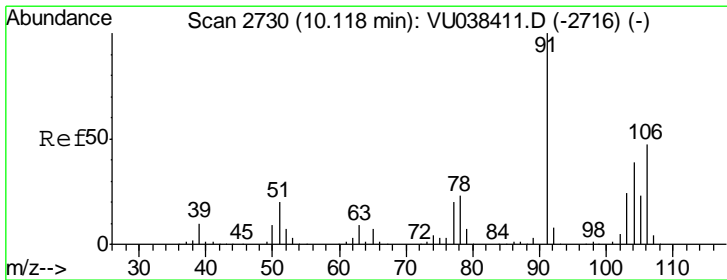
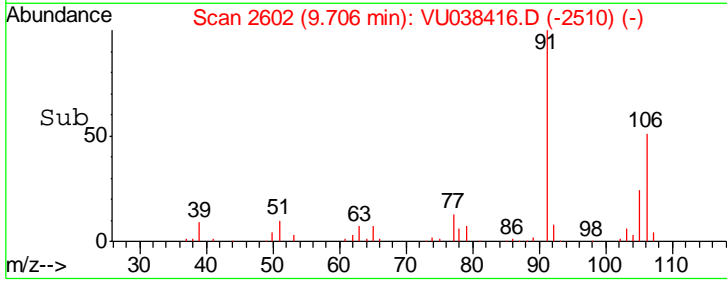
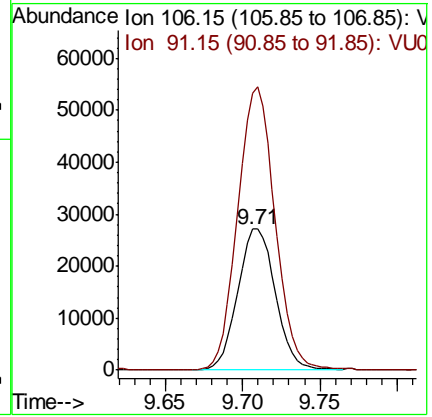
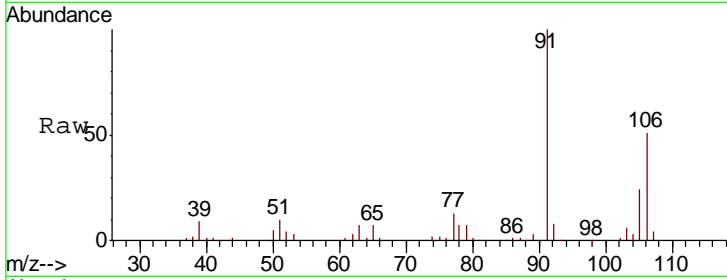




#53
 m,p-Xylene
 Concen: 1.226 ug/L
 RT: 9.71 min Scan# 2602
 Delta R.T. -0.00 min
 Lab File: VU038416.D
 Acq: 30 May 2020 16:24

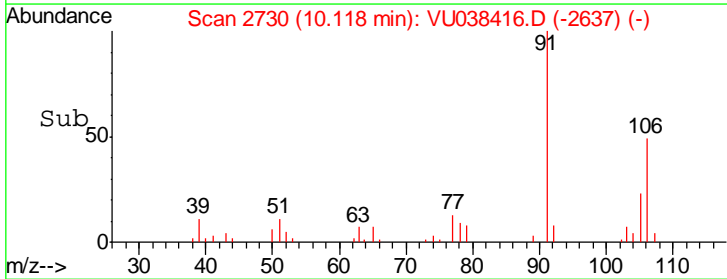
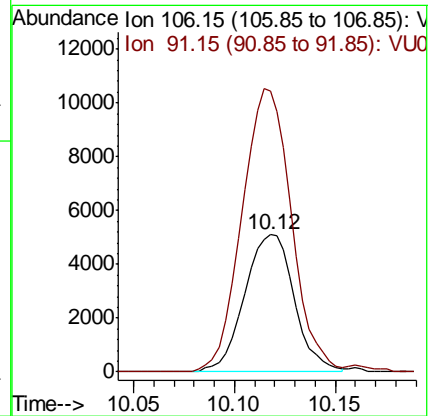
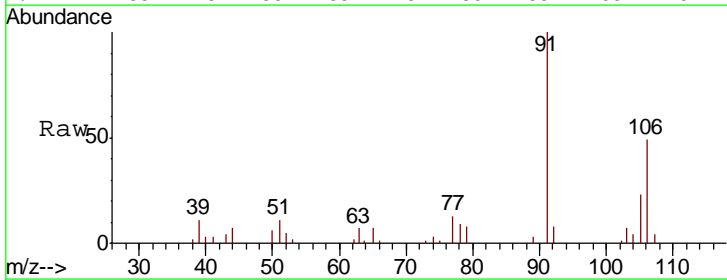
Instrument :
 MSVOA_U
 ClientSampled :

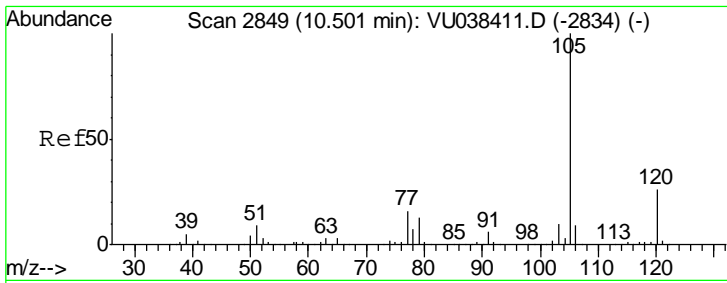
Tgt Ion:106 Resp: 46106
 Ion Ratio Lower Upper
 106 100
 91 196.4 138.1 256.5



#54
 o-Xylene
 Concen: 0.244 ug/L
 RT: 10.12 min Scan# 2730
 Delta R.T. 0.00 min
 Lab File: VU038416.D
 Acq: 30 May 2020 16:24

Tgt Ion:106 Resp: 8792
 Ion Ratio Lower Upper
 106 100
 91 204.8 150.6 279.8

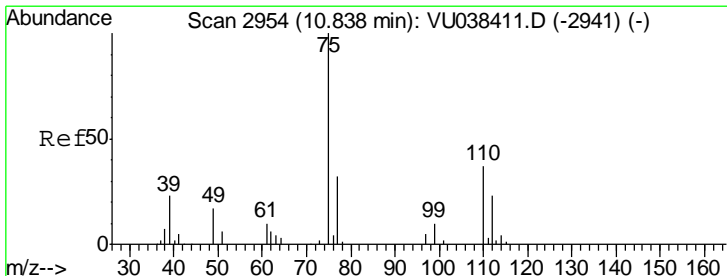
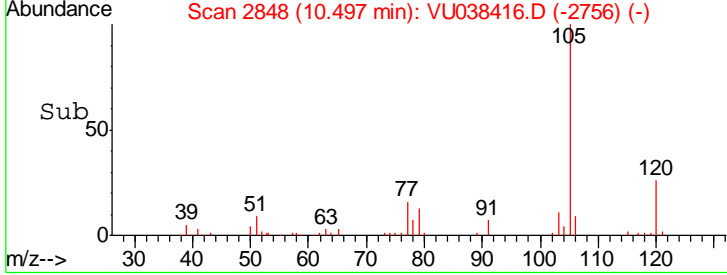
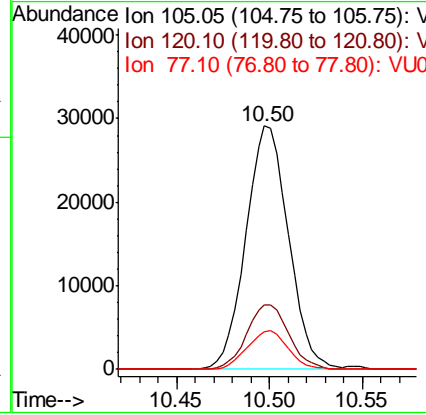
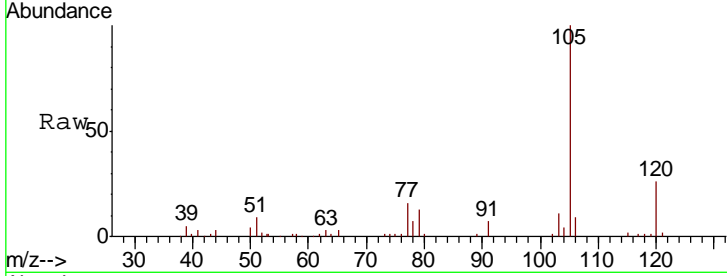




#56
 Isopropylbenzene
 Concen: 0.489 ug/L
 RT: 10.50 min Scan# 2848
 Delta R.T. -0.00 min
 Lab File: VU038416.D
 Acq: 30 May 2020 16:24

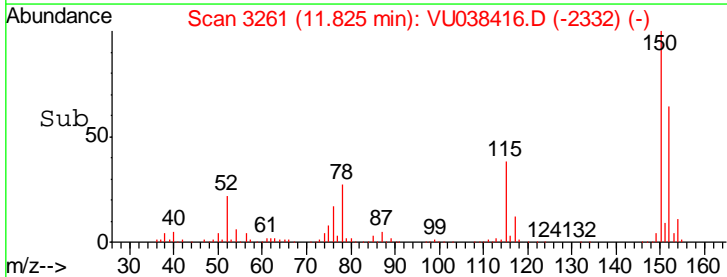
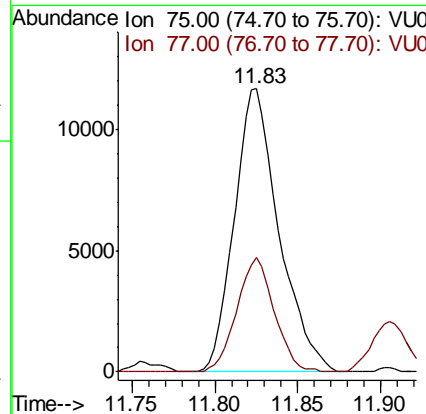
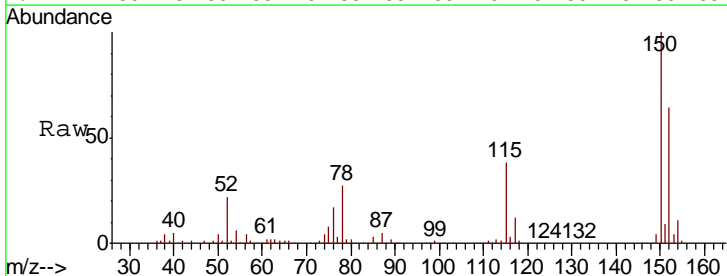
Instrument :
 MSVOA_U
 ClientSampled :

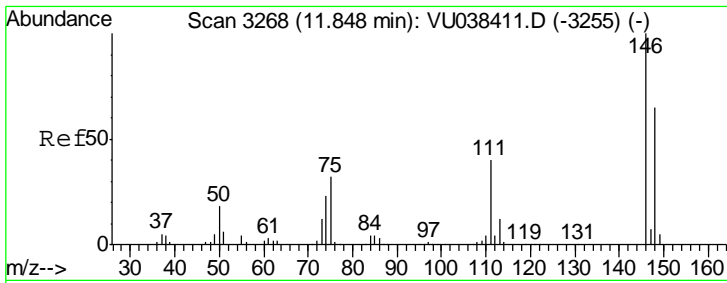
Tgt Ion	Resp	Lower	Upper
105	46492		
120	26.1	20.7	31.1
77	15.2	12.5	18.7



#59
 1,2,3-Trichloropropane
 Concen: 1.388 ug/L
 RT: 11.83 min Scan# 3261
 Delta R.T. 0.99 min
 Lab File: VU038416.D
 Acq: 30 May 2020 16:24

Tgt Ion	Resp	Lower	Upper
75	21845		
77	33.8	25.4	38.2

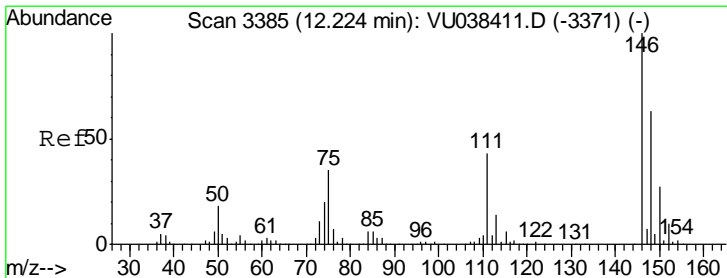
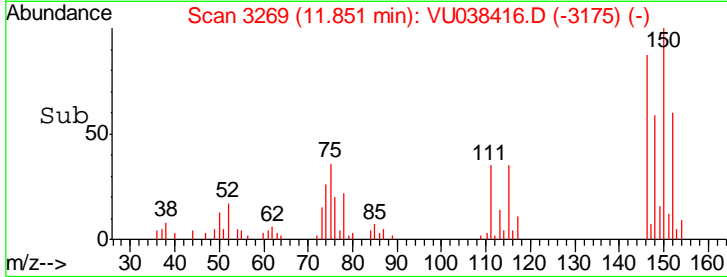
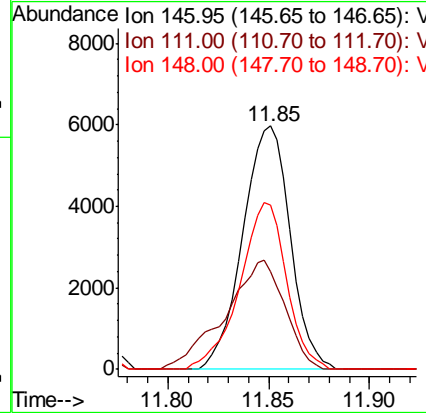
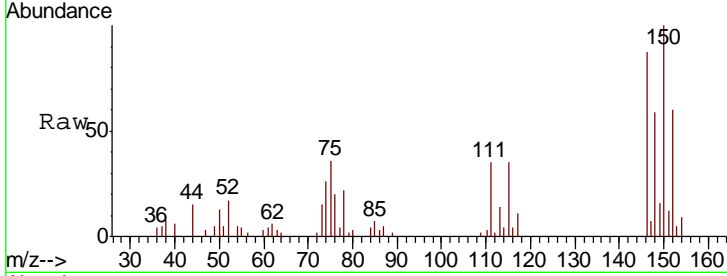




#63
 1,4-Dichlorobenzene
 Concen: 0.224 ug/L
 RT: 11.85 min Scan# 3269
 Delta R.T. 0.00 min
 Lab File: VU038416.D
 Acq: 30 May 2020 16:24

Instrument : MSVOA_U
 ClientSampled :

Tgt Ion	Resp	Lower	Upper
146	9833		
111	40.0	27.6	51.2
148	67.2	44.8	83.2



#65
 1,2-Dichlorobenzene
 Concen: 0.378 ug/L
 RT: 12.22 min Scan# 3385
 Delta R.T. -0.00 min
 Lab File: VU038416.D
 Acq: 30 May 2020 16:24

Tgt Ion	Resp	Lower	Upper
146	15524		
111	48.4	35.1	52.7
148	70.8	50.9	76.3

